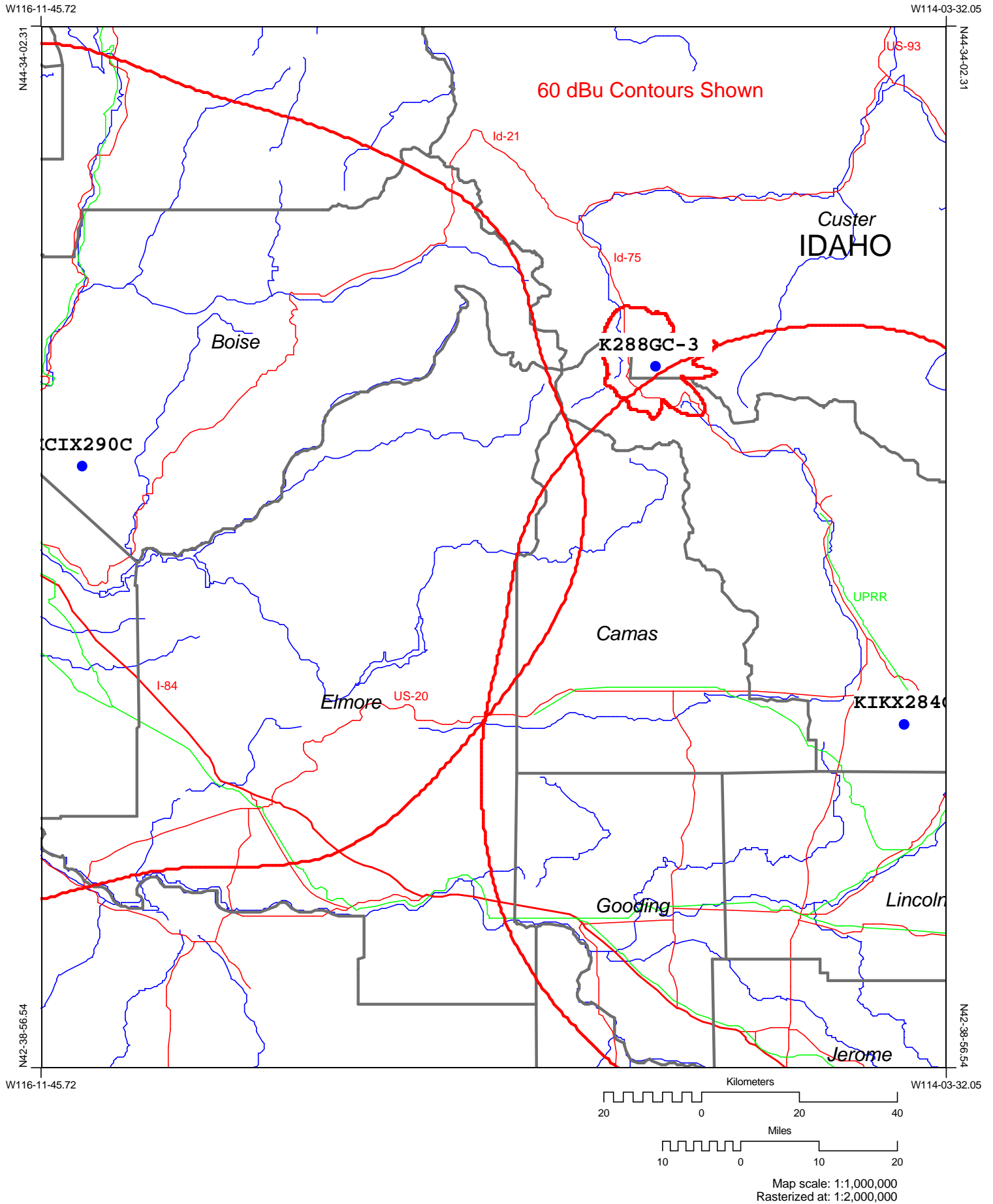
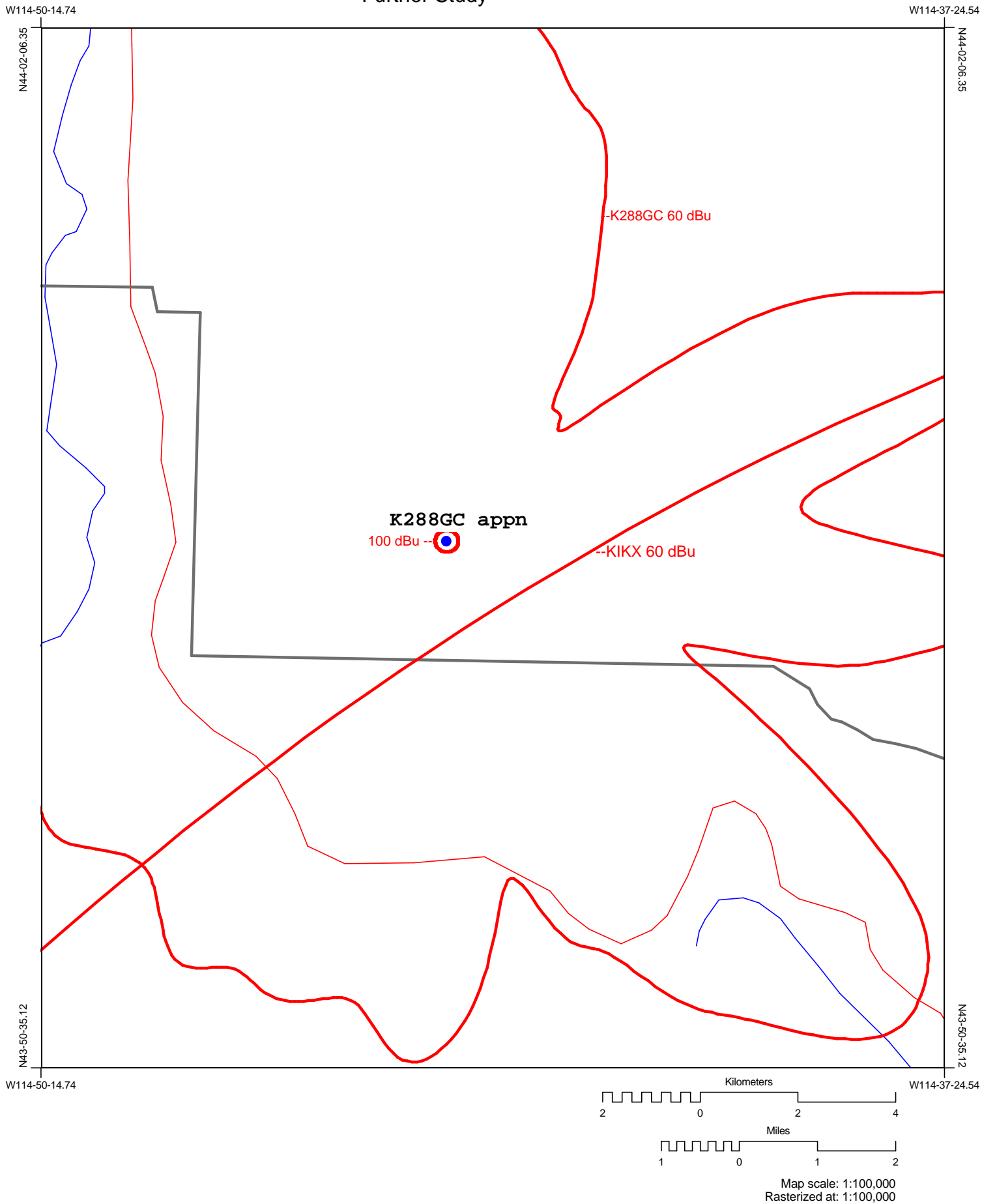


Absence of Interference Study, Second and Third Adjacent Channel Stations



Absence of Interference to Second and Third Adjacent Channel Stations Further Study



Distance to FM Contour

Study: K288GCapp-e3
Site: K288GC

Latitude: N43-56-25.00
Longitude: W114-44-29.00

True Radial Bearing (Degrees)	Average Elevation (meters)	Radiation Center Height Above Average Terrain (meters)	Effective Radiated Power (KW)	(dBKW)	Distance to Contour 60.0 dBu F(50,50) (km)
0.00	2578.40	335.60	0.0110443	-19.57	10.96
5.00	2585.42	328.58	0.011418	-19.42	10.94
10.00	2614.42	299.58	0.0117489	-19.30	10.55
15.00	2676.77	237.23	0.0120243	-19.20	9.44
20.00	2711.48	202.52	0.0122628	-19.11	8.74
25.00	2787.95	126.05	0.01245	-19.05	6.89
30.00	2838.22	75.78	0.012603	-19.00	5.36
35.00	2879.59	34.41	0.0127261	-18.95	3.57
40.00	2932.08	0.00	0.0128292	-18.92	3.35
45.00	2888.84	25.16	0.0129015	-18.89	3.36
50.00	2808.45	105.55	0.0129533	-18.88	6.41
55.00	2715.67	198.33	0.0129818	-18.87	8.78
60.00	2648.35	265.65	0.0129948	-18.86	10.19
65.00	2549.23	364.77	0.0129922	-18.86	11.89
70.00	2546.03	367.97	0.0129792	-18.87	11.94
75.00	2666.43	247.57	0.0129429	-18.88	9.82
80.00	2767.58	146.42	0.0128911	-18.90	7.46
85.00	2793.88	120.12	0.0128085	-18.93	6.79
90.00	2735.03	178.97	0.0127054	-18.96	8.28
95.00	2588.64	325.36	0.0125724	-19.01	11.16
100.00	2622.52	291.48	0.0124194	-19.06	10.56
105.00	2696.58	217.42	0.0122151	-19.13	9.06
110.00	2764.54	149.46	0.0119766	-19.22	7.40
115.00	2844.25	69.75	0.0116827	-19.32	5.05
120.00	2805.81	108.19	0.0113519	-19.45	6.28
125.00	2694.54	219.46	0.0109567	-19.60	8.85
130.00	2522.61	391.39	0.0105188	-19.78	11.61
135.00	2386.26	527.74	0.0100252	-19.99	12.83
140.00	2342.48	571.52	0.00949463	-20.23	13.13
145.00	2388.80	525.20	0.00894399	-20.48	12.39
150.00	2490.25	423.75	0.00837998	-20.77	11.30
155.00	2552.34	361.66	0.00781496	-21.07	10.38
160.00	2633.26	280.74	0.00724927	-21.40	9.00
165.00	2662.53	251.47	0.00671415	-21.73	8.32
170.00	2726.39	187.61	0.00619941	-22.08	7.01
175.00	2610.41	303.59	0.00574337	-22.41	8.77
180.00	2443.31	470.69	0.00532646	-22.74	10.30
185.00	2354.71	559.29	0.00497858	-23.03	10.61
190.00	2477.51	436.49	0.00467672	-23.30	9.66
195.00	2442.79	471.21	0.00443859	-23.53	9.73

True Radial Bearing (Degrees)	Average Elevation (meters)	Radiation Center Height Above Average Terrain (meters)	Effective Radiated Power (KW)	Distance to Contour 60.0 dBu F(50,50) (dBKW) (km)
200.00	2381.59	532.41	0.00424294	9.89
205.00	2406.24	507.76	0.00409074	9.65
210.00	2324.94	589.06	0.0039675	10.03
215.00	2413.06	500.94	0.00387998	9.45
220.00	2503.34	410.66	0.00381628	8.83
225.00	2479.32	434.68	0.00376986	9.00
230.00	2372.17	541.83	0.00373495	9.53
235.00	2385.37	528.63	0.00371682	9.45
240.00	2408.33	505.67	0.00370986	9.34
245.00	2307.77	606.23	0.00371125	9.90
250.00	2194.09	719.91	0.00371821	10.43
255.00	2297.98	616.02	0.00374193	9.98
260.00	2407.27	506.73	0.00377684	9.40
265.00	2406.10	507.90	0.00382902	9.44
270.00	2407.29	506.71	0.00389272	9.49
275.00	2352.65	561.35	0.00399214	9.87
280.00	2312.59	601.41	0.00411538	10.24
285.00	2228.74	685.26	0.00428207	10.84
290.00	2189.60	724.40	0.00447772	11.22
295.00	2192.46	721.54	0.0047371	11.44
300.00	2187.43	726.57	0.00503896	11.74
305.00	2172.02	741.98	0.00540985	12.14
310.00	2163.56	750.44	0.00582676	12.52
315.00	2165.14	748.86	0.00630236	12.89
320.00	2161.72	752.28	0.0068171	13.29
325.00	2166.80	747.20	0.00736241	13.63
330.00	2204.36	709.64	0.0079281	13.72
335.00	2263.33	650.67	0.00849278	13.52
340.00	2358.50	555.50	0.00905679	12.75
345.00	2431.34	482.66	0.00960075	12.30
350.00	2479.31	434.69	0.0101313	12.02
355.00	2574.79	339.21	0.0106064	10.91

Radiation Center (AGL): 55.0 meters 180.4 feet
Radiation Center (AMSL): 2914.0 meters 9560.3 feet
Radiation Center (HAAT): 413.0 meters 1354.9 feet
Average Terrain (AMSL): 2501.0 meters 8205.4 feet
Ground AMSL: 2859.0 meters 9379.9 feet

Peak ERP: 0.0 KW
Frequency: 105.3 MHz
Antenna:
Orientation: 62.00°
Downtilt: 0.00°

Area within 60.0 dBu F(50,50) Contour is 320.071 km

Distance to FM Contour

Study: k288GCapp_100
Site: K288GC-3

Latitude: N43-56-25.00
Longitude: W114-44-29.00

True Radial Bearing (Degrees)	Average Elevation (meters)	Radiation Center Height Above Average Terrain (meters)	Effective Radiated Power (KW)	(dBKW)	Distance to Contour 100.0 dBu F(50,10) (km)
0.00	2578.40	334.60	0.01	-20.00	0.22
5.00	2585.42	327.58	0.01	-20.00	0.22
10.00	2614.42	298.58	0.01	-20.00	0.22
15.00	2676.77	236.23	0.01	-20.00	0.22
20.00	2711.48	201.52	0.01	-20.00	0.22
25.00	2787.95	125.05	0.01	-20.00	0.22
30.00	2838.22	74.78	0.01	-20.00	0.22
35.00	2879.59	33.41	0.01	-20.00	0.22
40.00	2932.08	0.00	0.01	-20.00	0.22
45.00	2888.84	24.16	0.01	-20.00	0.22
50.00	2808.45	104.55	0.01	-20.00	0.22
55.00	2715.67	197.33	0.01	-20.00	0.22
60.00	2648.35	264.65	0.01	-20.00	0.22
65.00	2549.23	363.77	0.01	-20.00	0.22
70.00	2546.03	366.97	0.01	-20.00	0.22
75.00	2666.43	246.57	0.01	-20.00	0.22
80.00	2767.58	145.42	0.01	-20.00	0.22
85.00	2793.88	119.12	0.01	-20.00	0.22
90.00	2735.03	177.97	0.01	-20.00	0.22
95.00	2588.64	324.36	0.01	-20.00	0.22
100.00	2622.52	290.48	0.01	-20.00	0.22
105.00	2696.58	216.42	0.01	-20.00	0.22
110.00	2764.54	148.46	0.01	-20.00	0.22
115.00	2844.25	68.75	0.01	-20.00	0.22
120.00	2805.81	107.19	0.01	-20.00	0.22
125.00	2694.54	218.46	0.01	-20.00	0.22
130.00	2522.61	390.39	0.01	-20.00	0.22
135.00	2386.26	526.74	0.01	-20.00	0.22
140.00	2342.48	570.52	0.01	-20.00	0.22
145.00	2388.80	524.20	0.01	-20.00	0.22
150.00	2490.25	422.75	0.01	-20.00	0.22
155.00	2552.34	360.66	0.01	-20.00	0.22
160.00	2633.26	279.74	0.01	-20.00	0.22
165.00	2662.53	250.47	0.01	-20.00	0.22
170.00	2726.39	186.61	0.01	-20.00	0.22
175.00	2610.41	302.59	0.01	-20.00	0.22
180.00	2443.31	469.69	0.01	-20.00	0.22
185.00	2354.71	558.29	0.01	-20.00	0.22
190.00	2477.51	435.49	0.01	-20.00	0.22
195.00	2442.79	470.21	0.01	-20.00	0.22

True Radial Bearing (Degrees)	Average Elevation (meters)	Radiation Center Height Above Average Terrain (meters)	Effective Radiated Power (KW)	Distance to Contour 100.0 dBu F(50,10) (dBKW) (km)
200.00	2381.59	531.41	0.01	-20.00
205.00	2406.24	506.76	0.01	-20.00
210.00	2324.94	588.06	0.01	-20.00
215.00	2413.06	499.94	0.01	-20.00
220.00	2503.34	409.66	0.01	-20.00
225.00	2479.32	433.68	0.01	-20.00
230.00	2372.17	540.83	0.01	-20.00
235.00	2385.37	527.63	0.01	-20.00
240.00	2408.33	504.67	0.01	-20.00
245.00	2307.77	605.23	0.01	-20.00
250.00	2194.09	718.91	0.01	-20.00
255.00	2297.98	615.02	0.01	-20.00
260.00	2407.27	505.73	0.01	-20.00
265.00	2406.10	506.90	0.01	-20.00
270.00	2407.29	505.71	0.01	-20.00
275.00	2352.65	560.35	0.01	-20.00
280.00	2312.59	600.41	0.01	-20.00
285.00	2228.74	684.26	0.01	-20.00
290.00	2189.60	723.40	0.01	-20.00
295.00	2192.46	720.54	0.01	-20.00
300.00	2187.43	725.57	0.01	-20.00
305.00	2172.02	740.98	0.01	-20.00
310.00	2163.56	749.44	0.01	-20.00
315.00	2165.14	747.86	0.01	-20.00
320.00	2161.72	751.28	0.01	-20.00
325.00	2166.80	746.20	0.01	-20.00
330.00	2204.36	708.64	0.01	-20.00
335.00	2263.33	649.67	0.01	-20.00
340.00	2358.50	554.50	0.01	-20.00
345.00	2431.34	481.66	0.01	-20.00
350.00	2479.31	433.69	0.01	-20.00
355.00	2574.79	338.21	0.01	-20.00

Radiation Center (AGL): 54.0 meters 177.2 feet
Radiation Center (AMSL): 2913.0 meters 9557.1 feet
Radiation Center (HAAT): 412.0 meters 1351.6 feet
Average Terrain (AMSL): 2501.0 meters 8205.4 feet
Ground AMSL: 2859.0 meters 9379.9 feet

Peak ERP: 0.0 KW
Frequency: 105.3 MHz
Antenna:
Orientation: 62.00°
Downtilt: 0.00°

Area within 100.0 dBu F(50,10) Contour is 0.154566 km

Distance to FM Contour

Study: KCIX290C
Site: KCIX290C

Latitude: N43-45-18.00
Longitude: W116-05-55.00

True Radial Bearing (Degrees)	Average Elevation (meters)	Radiation Center Height Above Average Terrain (meters)	Effective Radiated Power (KW)	Distance to Contour 60.0 dBu F(50,50) (dBKW)	Distance to Contour 60.0 dBu F(50,50) (km)
0.00	1584.79	625.21	49.00	16.90	85.55
15.00	1699.26	510.74	49.00	16.90	80.14
30.00	1667.81	542.19	49.00	16.90	81.93
45.00	1538.13	671.87	49.00	16.90	87.24
60.00	1385.24	824.76	49.00	16.90	92.42
75.00	1457.92	752.08	49.00	16.90	90.03
90.00	1305.70	904.30	49.00	16.90	94.75
105.00	1262.87	947.13	49.00	16.90	95.84
120.00	1370.05	839.95	49.00	16.90	92.90
135.00	1378.45	831.55	49.00	16.90	92.64
150.00	1393.79	816.21	49.00	16.90	92.15
165.00	1606.61	603.39	49.00	16.90	84.75
180.00	1567.04	642.96	49.00	16.90	86.20
195.00	1334.07	875.93	49.00	16.90	93.97
210.00	1184.45	1025.55	49.00	16.90	97.69
225.00	1147.64	1062.36	49.00	16.90	98.51
240.00	1187.67	1022.33	49.00	16.90	97.62
255.00	1216.56	993.44	49.00	16.90	96.95
270.00	1257.82	952.18	49.00	16.90	95.96
285.00	1291.78	918.22	49.00	16.90	95.11
300.00	1414.68	795.32	49.00	16.90	91.47
315.00	1308.23	901.77	49.00	16.90	94.69
330.00	1285.87	924.13	49.00	16.90	95.26
345.00	1447.63	762.37	49.00	16.90	90.38

Radiation Center (AGL):	76.0 meters	249.3 feet
Radiation Center (AMSL):	2210.0 meters	7250.6 feet
Radiation Center (HAAT):	822.7 meters	2699.3 feet
Average Terrain (AMSL):	1387.3 meters	4551.3 feet
Ground AMSL:	2134.0 meters	7001.3 feet

Peak ERP: 49.0 KW
Frequency: 105.9 MHz
Antenna:
Orientation: 0.00°
Downtilt: 0.00°

Area within 60.0 dBu F(50,50) Contour is 26572.8 km

Distance to FM Contour

Study: KIKX284C
Site: KIKX284C

Latitude: N43-16-45.00
Longitude: W114-09-17.00

True Radial Bearing (Degrees)	Average Elevation (meters)	Radiation Center Height Above Average Terrain (meters)	Effective Radiated Power (KW)	Distance to Contour 60.0 dBu F(50,50) (dBKW)	Distance to Contour 60.0 dBu F(50,50) (km)
0.00	1590.80	409.20	100.00	20.00	80.44
15.00	1697.47	302.53	100.00	20.00	72.58
30.00	1726.86	273.14	100.00	20.00	70.18
45.00	1581.02	418.98	100.00	20.00	81.16
60.00	1560.56	439.44	100.00	20.00	82.66
75.00	1591.27	408.73	100.00	20.00	80.40
90.00	1541.58	458.42	100.00	20.00	84.04
105.00	1504.73	495.27	100.00	20.00	86.44
120.00	1470.72	529.28	100.00	20.00	88.47
135.00	1456.51	543.49	100.00	20.00	89.29
150.00	1418.77	581.23	100.00	20.00	91.08
165.00	1412.88	587.12	100.00	20.00	91.32
180.00	1412.94	587.06	100.00	20.00	91.32
195.00	1422.28	577.72	100.00	20.00	90.94
210.00	1440.98	559.02	100.00	20.00	90.10
225.00	1467.91	532.09	100.00	20.00	88.63
240.00	1494.50	505.50	100.00	20.00	87.05
255.00	1548.85	451.15	100.00	20.00	83.51
270.00	1588.39	411.61	100.00	20.00	80.62
285.00	1608.48	391.52	100.00	20.00	79.13
300.00	1554.76	445.24	100.00	20.00	83.09
315.00	1530.80	469.20	100.00	20.00	84.78
330.00	1517.10	482.90	100.00	20.00	85.67
345.00	1540.24	459.76	100.00	20.00	84.13

Radiation Center (AGL):	17.0 meters	55.8 feet
Radiation Center (AMSL):	2000.0 meters	6561.7 feet
Radiation Center (HAAT):	471.7 meters	1547.4 feet
Average Terrain (AMSL):	1528.3 meters	5014.3 feet
Ground AMSL:	1983.0 meters	6505.9 feet

Peak ERP: 100.0 KW
Frequency: 104.7 MHz
Antenna:
Orientation: 0.00°
Downtilt: 0.00°

Area within 60.0 dBu F(50,50) Contour is 22500.5 km