

# **EXHIBIT 13**

**Waiver Request of Section 74.1204**  
K211DC Las Vegas, NV 10 Watts ERP  
Minor Site Change  
Calvary Chapel of Twin Falls, Inc.  
February 2011

The proposed interference contour is contained entirely inside the service contour of second-adjacent FM stations KSOS Las Vegas and KCNV Las Vegas

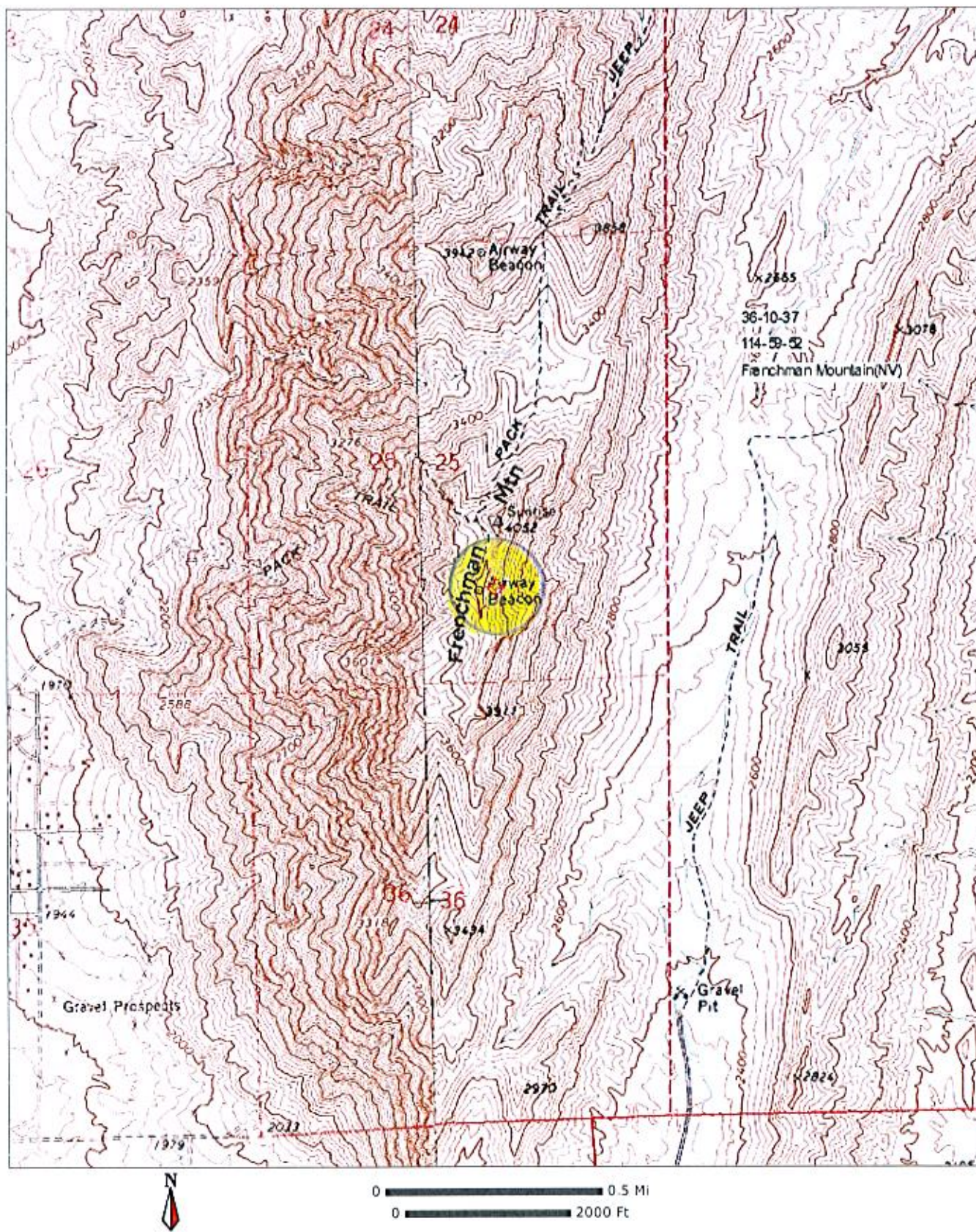
## **KSOS**

The proposed interference contour is contained inside the service contour of second-adjacent FM Station KSOS, 213C, 100kW Las Vegas, NV. The level of least arriving protected F(50,50) signal at the proposed transmitter site is 94.4dBu. Using the Undesired-to-Desired method for calculating proposed interference, the interfering contour is 134.4dBu(free-space contour method employed). The interfering signal would, in the worst case at the maximum radial, extend 44 meters from the center of radiation, which is proposed at 8 meters AGL. This interference contour does not touch the ground. This site is a communications site on Frenchman Mt. Attached is a portion of the USGS Frenchman Mountain (NV) Quadrangle showing this tower is not located in a populated area and there are no residences, businesses or major roadways that are within the interference contour. Calvary Chapel of Twin Falls, Inc. respectfully requests a waiver of the FM translator contour overlap regulations with respect to second-adjacent FM Station KSOS Las Vegas.

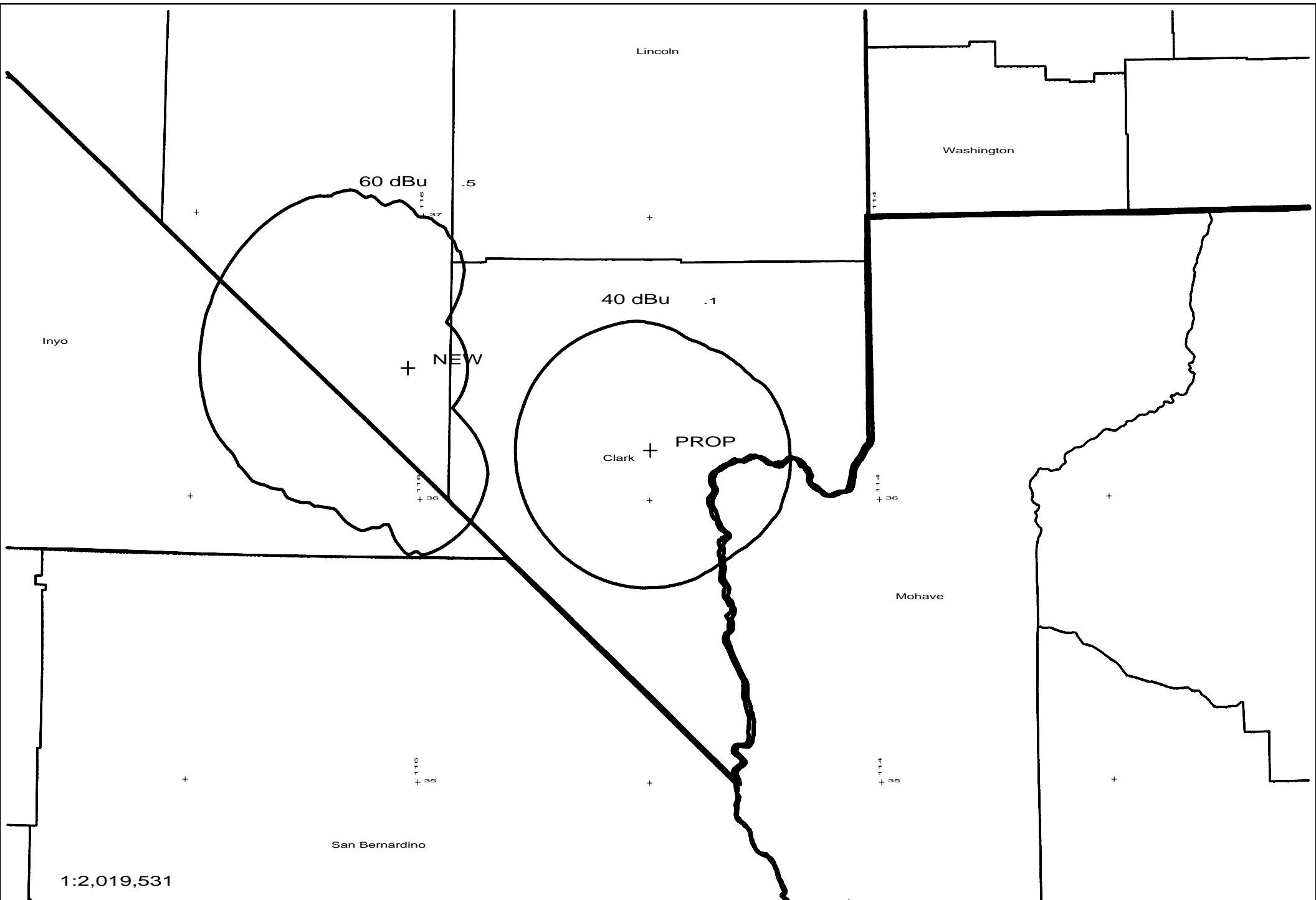
## **KCNV**

The proposed interference contour is contained inside the service contour of second-adjacent FM Station KCNV, 209C2, .55kW Las Vegas, NV. The level of least arriving protected F(50,50) signal at the proposed transmitter site is 62dBu. Using the Undesired-to-Desired method for calculating proposed interference, the interfering contour is 102dBu(free-space contour method employed). The interfering signal would, in the worst case at the maximum radial, extend 179 meters, or 589 feet from the base of the tower. This site is a communications site on Sunrise Frenchman Mountain where there are a couple of towers and equipment buildings. Attached is a portion of the USGS Frenchman Mountain (NV) Quadrangle with an interference contour, in excess of 589 feet, marked in yellow. There are only equipment buildings within the interference contour. Because there are no residences, businesses or major roadways that are within the interference contour, Calvary Chapel of Twin Falls, Inc. respectfully requests a waiver of the FM translator contour overlap regulations with respect to second-adjacent FM Station KCNV Las Vegas.









Scale in km



PROP 211D .01kW 1237M AMSL  
N. Lat. 36 10 37 W. Lng. 114 59 52

CoChannel  
CCTF - 02/11