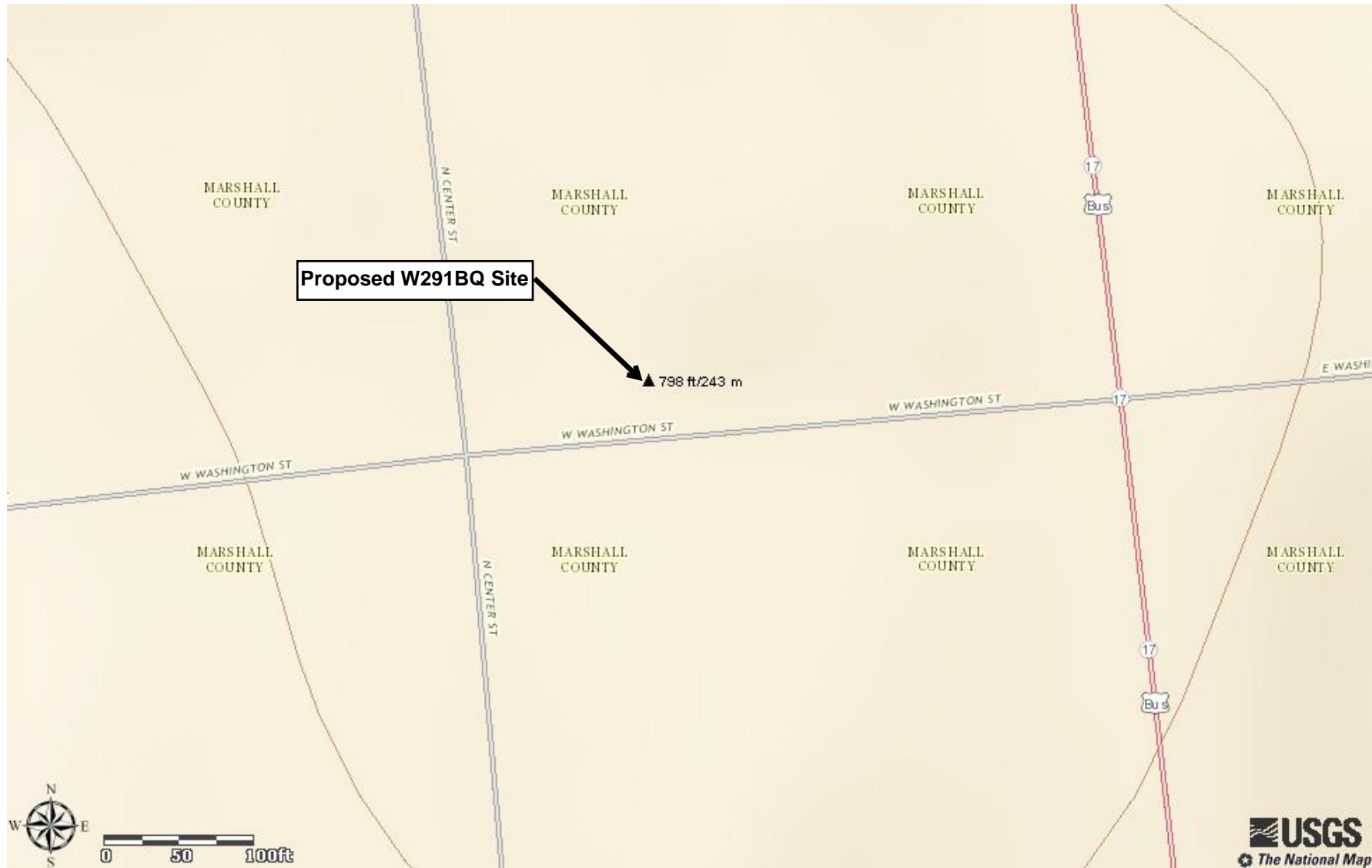


## Exhibit 13.1 Topographical Map Showing Proposed W291BQ Site



# Exhibit 13.2

## Vertical Plan of Antenna System

The site is located at 112 W. Washington Street, City of Plymouth, Marshall County, Indiana.

### Site Location (NAD 27)

NL: 41° 20' 30"

WL: 86° 18' 37"

(41-20-30.5 NL; 86-18-36.8 WL NAD1983)

### NOTE: Existing Tower Construction

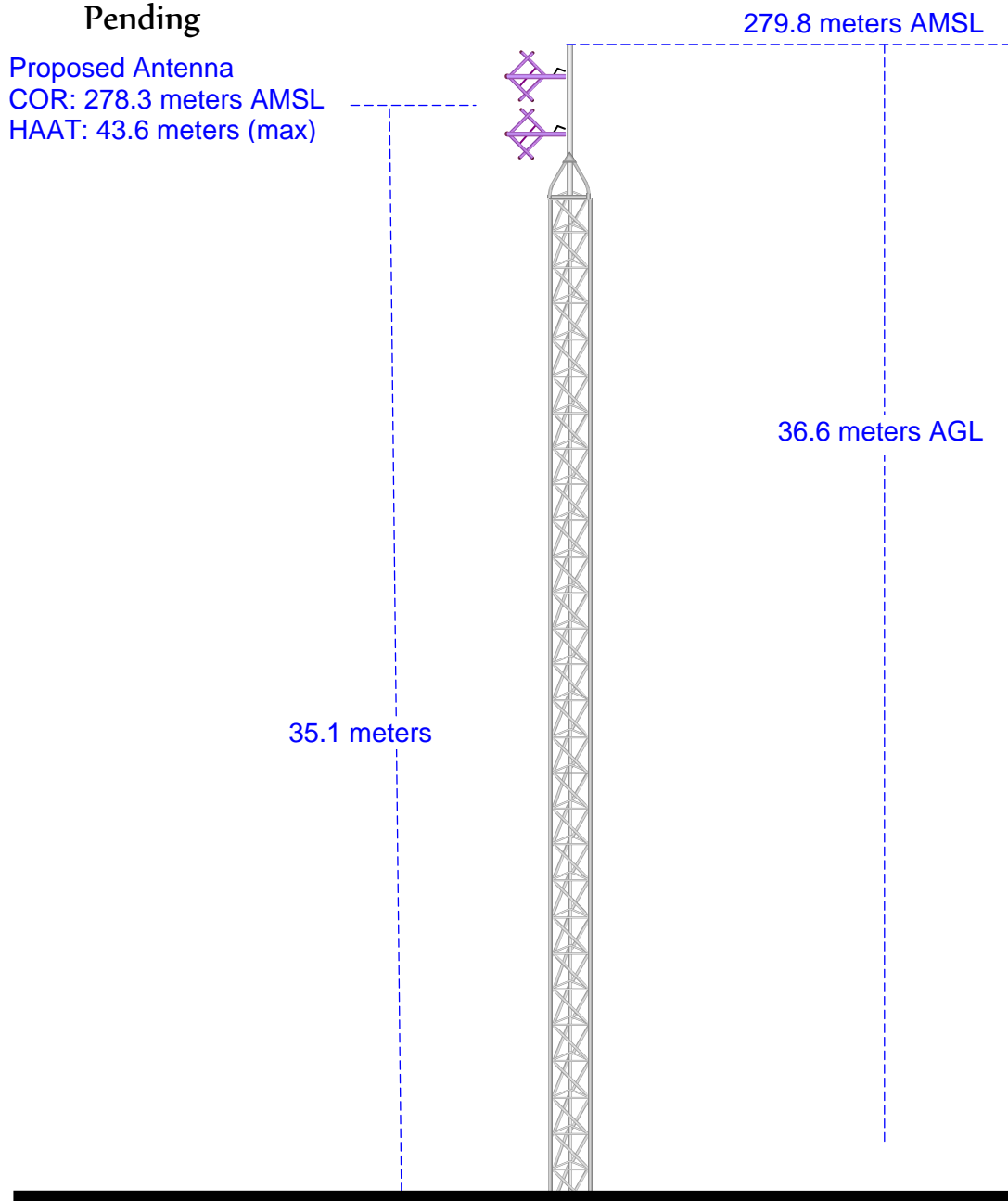
Antenna Structure Registration No.

Pending

Proposed Antenna

COR: 278.3 meters AMSL

HAAT: 43.6 meters (max)



Ground Elevation = 243.2 m AMSL

Drawing is not to Scale

**MUNN-REESE, INC.**

Broadcast Engineering Consultants  
Coldwater, MI 49036

### Exhibit 13.3 - Present versus Proposed Service Contour Study

**W291BQ.L**  
Plymouth, IN  
BLFT20070926AJU  
Latitude: 41-19-35 N  
Longitude: 086-12-01 W  
ERP: 0.099 kW  
Channel: 291  
Frequency: 106.1 MHz  
AMSL Height: 275.0 m  
Elevation: 252.0 m  
Horiz. Pattern: Omni  
Vert. Pattern: No  
Prop Model: None

2010 Census Data:

60 dBu Contour

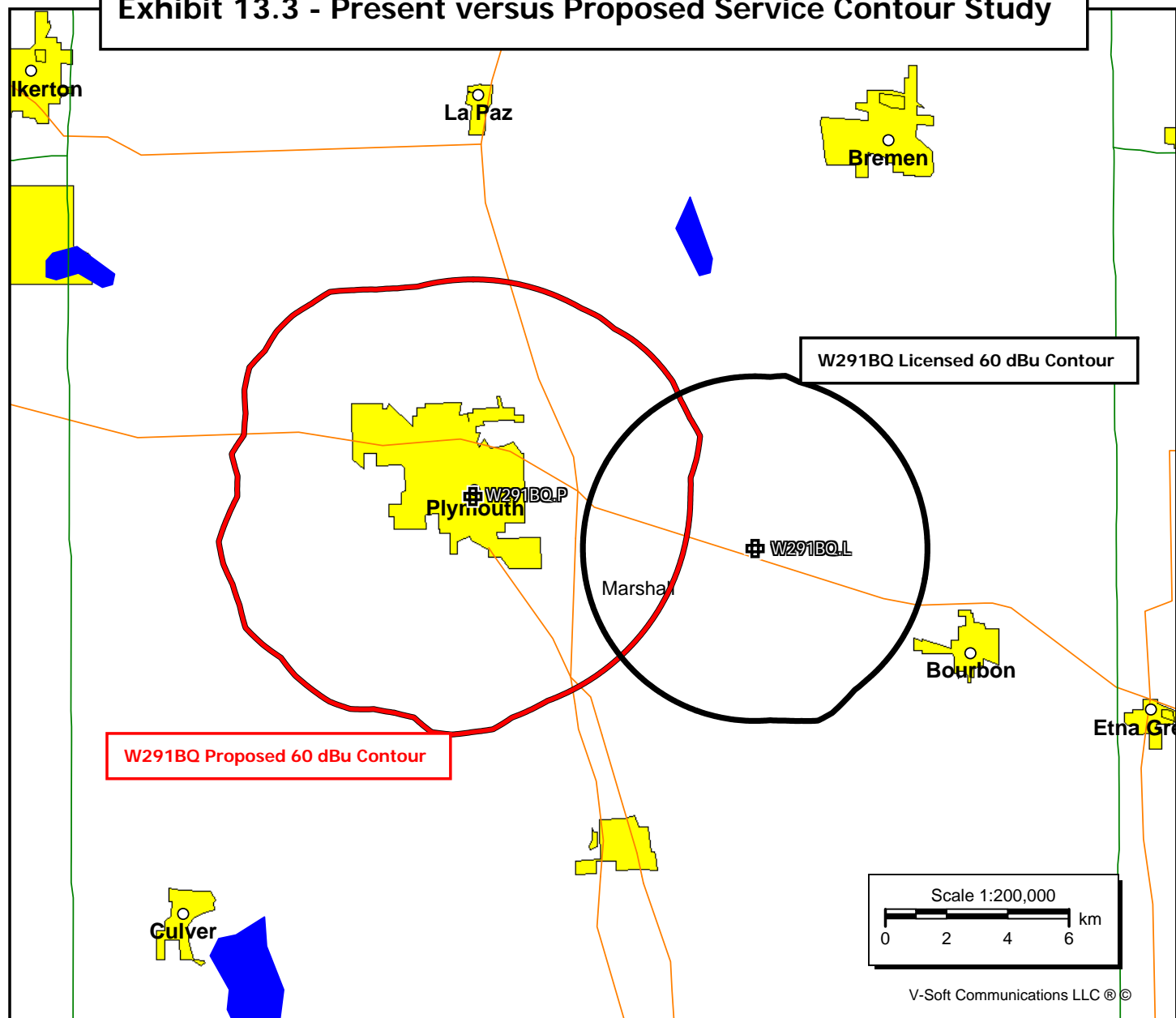
Total Population: 1,456  
Total Area: 100 sq. km

**W291BQ.P**  
Plymouth, IN  
Proposed Operation  
Latitude: 41-20-30 N  
Longitude: 086-18-37 W  
ERP: 0.25 kW  
Channel: 291  
Frequency: 106.1 MHz  
AMSL Height: 278.3 m  
Elevation: 243.2 m  
Horiz. Pattern: Omni  
Vert. Pattern: No  
Prop Model: None

2010 Census Data:

60 dBu Contour

Total Population: 17,673  
Total Area: 181 sq. km



## Exhibit 13.4 - Primary versus Proposed Service Contour Study

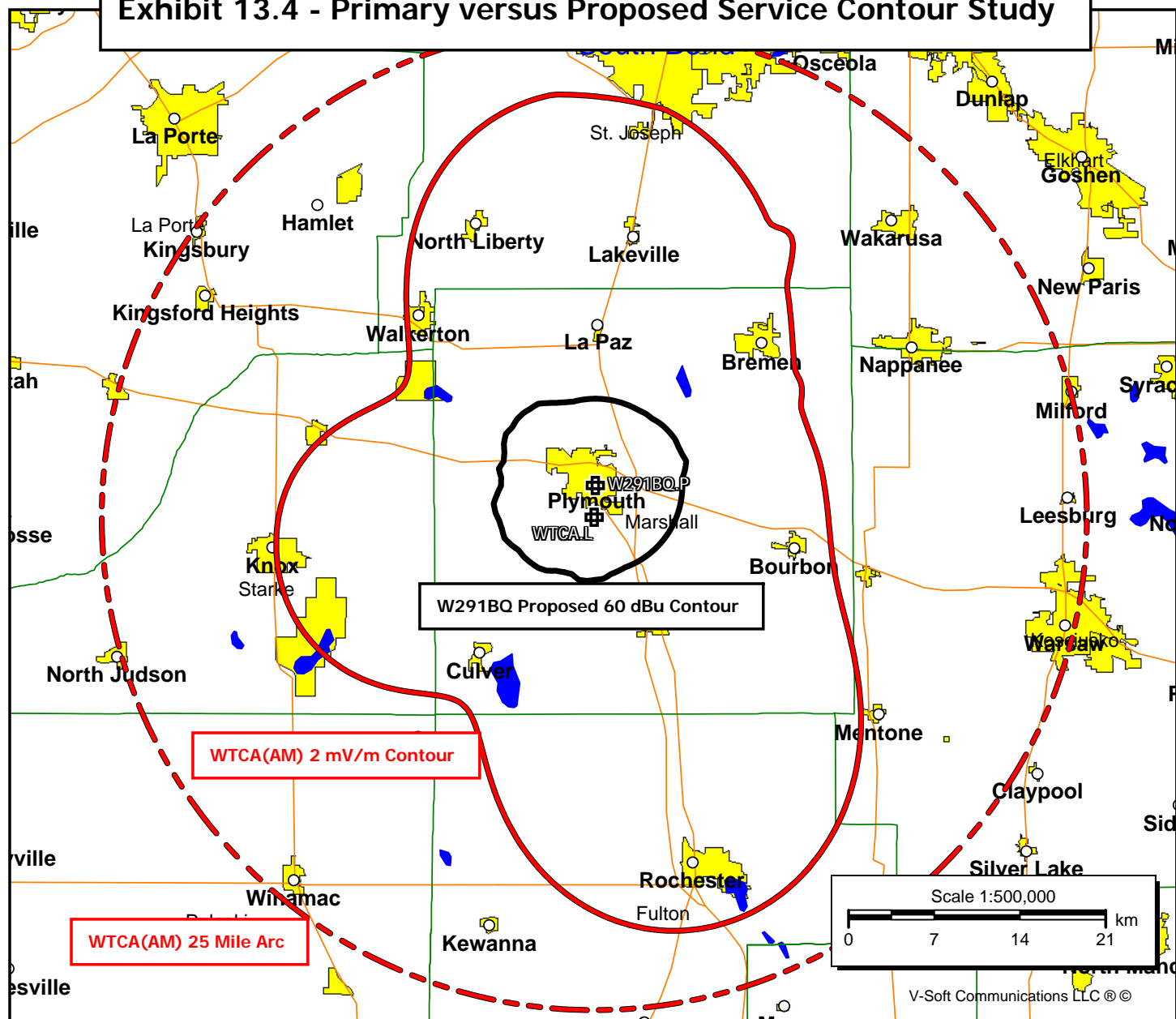
W291BQ.P  
Plymouth, IN  
Latitude: 41-20-30 N  
Longitude: 086-18-37 W  
ERP: 0.25 kW  
Channel: 291  
Frequency: 106.1 MHz  
AMSL Height: 278.3 m  
Elevation: 243.2 m  
Horiz. Pattern: Omni  
Vert. Pattern: No  
Prop Model: None

2010 Census Data:

60 dBu Contour

Total Population: 17,673  
Total Area: 181 sq. km

WTCA.L  
Plymouth, IN  
Latitude: 41-19-06 N  
Longitude: 086-18-41 W  
Power: 0.25 kW  
Frequency: 1050 kHz  
Directional Antenna



# Exhibit 13.5

## Tabulation of Proposed W291BQ Allocation

Munn-Reese, Inc.  
Coldwater, MI 49036

W291BQ - Plymouth, IN  
Progressive Broadcasting System, Inc.  
41 20 30.0 N.  
86 18 37.0 W.  
106.1 MHz, Pwr= 0.25 kW, HAAT= 33.1 M, COR= 278.3 M  
Average Protected F(50-50)= 7.4 km  
Omni-directional

DISPLAY DATES  
DATA 05-28-14  
SEARCH 05-28-14

CH CITY	CALL	TYPE STATE	ANT AZI <--	DIST FILE #	LAT LNG	PWR(kW) HAAT(M)	INT(km) COR(M)	PRO(km) LICENSEE	*IN* (Overlap in km)	*OUT*
291D Plymouth	W291BQ	LIC _V_ IN	100.4 280.5	9.33 BLFT20070926AJU	41 19 35.0 86 12 01.0	0.099 30	18.5 275	5.6 Progressive Broadcasting S	-16.3*	-20.0
292A South Bend	WUBU	LIC ZCX IN	7.4 187.4	37.52 BLH20090331ATJ	41 40 35.0 86 15 08.0	3.000 92	29.8 323	20.3 Partnership Radio, LIc	0.6	7.1
293D Rochester	W293AL	LIC _C_ IN	167.1 347.1	25.72 BMLFT20081209AAG	41 06 58.0 86 14 30.0	0.013 125	0.3 366	6.5 Calvary Radio Network, Inc	18.3	18.1
290A Wabash	WJOT-FM	LIC _CN IN	143.4 323.7	70.51 BLH19930811KC	40 49 54.0 85 48 36.0	6.000 97	44.4 329	28.7 Dream Weaver Marketing, LI	19.0	31.6

Terrain database is USGS 03 SEC , R= 73.215 qualifying spacings or FCC minimum Spacings in KM, M= Margin in KM  
Contour distances are on direct line to and from reference station. Reference zone= East Zone, Co to 3rd adjacent.  
All separation margins (if shown) include rounding  
Ant Column: (D= DA Standard, Z= DA 73.215, N= Not DA 73.215, \_= Omni ), Polarization (C,H,V,E), Beamtilt(Y,N,X)  
"\*"affixed to 'IN' or 'OUT' values = site inside protected contour.  
< = Contour Overlap  
Reference station has protected zone issue:

## Exhibit 13.6

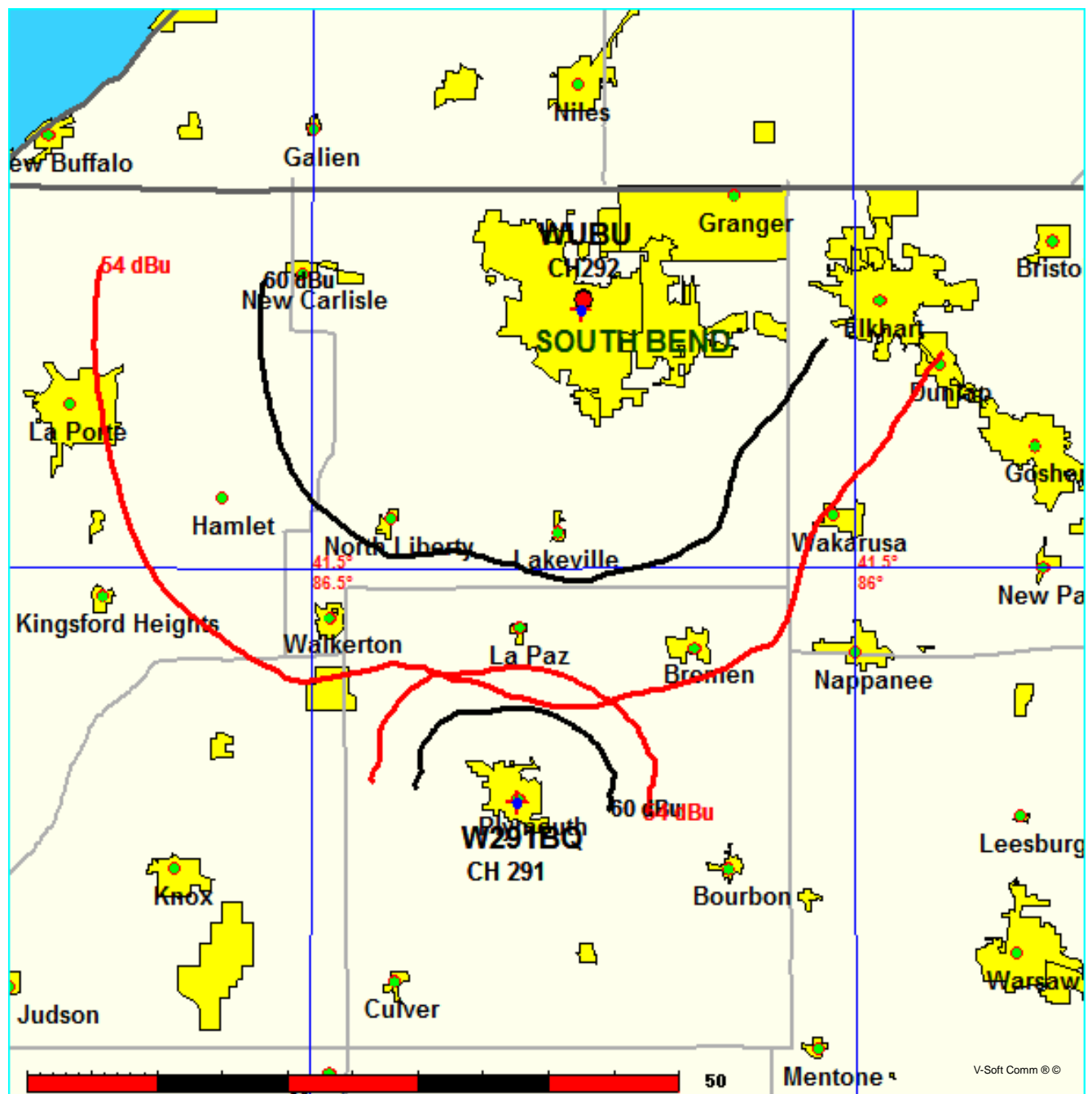
### W291BQ Protection to WUBU(FM) - South Bend, IN

W291BQ - Plymouth, IN vs WUBU(FM) - South Bend, IN  
Progressive Broadcasting System, Inc.

FMCommander Single Allocation Study - 05-28-2014 - USGS 03 SEC  
W291BQ's Overlaps (In= 0.6 km, Out= 7.06 km)

W291BQ CH 291 D  
Lat= 41 20 30.0, Lng= 86 18 37.0  
0.25 kW 33.1 M HAAT, 278.3 M COR  
Prot.= 60 dBu, Intef.= 54 dBu

WUBU CH 292 A 73.215 Z BLH20090331ATJ  
Lat= 41 40 35.0, Lng= 86 15 08.0  
3.0 kW 92 M HAAT, 323 M COR  
Prot.= 60 dBu, Intef.= 54 dBu



# Exhibit 13.6

## W291BQ Protection to WUBU(FM) – South Bend, IN

05-28-2014      Terrain Data: USGS 03 SEC      FMOver Analysis

W291BQ

WUBU BLH20090331ATJ

Channel = 291D  
 Max ERP = 0.25 kW  
 RCAMSL = 278.3 M  
 N. Lat. 41 20 30.0  
 W. Lng. 86 18 37.0  
 Protected  
 60 dBu

Channel = 292A  
 Max ERP = 3 kW  
 RCAMSL = 323 M  
 N. Lat. 41 40 35.0  
 W. Lng. 86 15 08.0  
 Interfering  
 54 dBu

Azimuth (degrees)	ERP (kW)	HAAT (m)	Dist (km)	Azimuth (degrees)	ERP (kW)	HAAT (m)	Dist (km)	Actual (dBu)	IX (km)
307.0	000.2500	0041.4	008.3	199.6	003.0000	0068.6	034.2	51.83	
308.0	000.2500	0041.6	008.3	199.6	003.0000	0068.6	034.0	51.90	
309.0	000.2500	0041.9	008.4	199.6	003.0000	0068.6	033.9	51.96	
310.0	000.2500	0041.9	008.4	199.5	003.0000	0068.6	033.8	52.02	
311.0	000.2500	0041.9	008.4	199.4	003.0000	0068.6	033.6	52.08	
312.0	000.2500	0042.0	008.4	199.3	003.0000	0068.6	033.5	52.14	
313.0	000.2500	0042.0	008.4	199.2	003.0000	0068.5	033.3	52.19	
314.0	000.2500	0041.8	008.4	199.1	003.0000	0068.5	033.2	52.24	
315.0	000.2500	0041.6	008.3	198.9	003.0000	0068.5	033.1	52.29	
316.0	000.2500	0041.3	008.3	198.8	003.0000	0068.4	033.0	52.33	
317.0	000.2500	0041.1	008.3	198.6	003.0000	0068.4	032.9	52.38	
318.0	000.2500	0040.9	008.3	198.5	003.0000	0068.3	032.8	52.43	
319.0	000.2500	0040.7	008.2	198.3	003.0000	0068.3	032.6	52.47	
320.0	000.2500	0040.5	008.2	198.1	003.0000	0068.2	032.5	52.51	
321.0	000.2500	0040.2	008.2	198.0	003.0000	0068.1	032.4	52.55	
322.0	000.2500	0040.0	008.2	197.8	003.0000	0068.0	032.3	52.58	
323.0	000.2500	0039.8	008.1	197.6	003.0000	0067.9	032.2	52.62	
324.0	000.2500	0039.9	008.1	197.5	003.0000	0067.8	032.1	52.66	
325.0	000.2500	0039.9	008.2	197.3	003.0000	0067.7	032.0	52.70	
326.0	000.2500	0039.7	008.1	197.1	003.0000	0067.6	031.9	52.73	
327.0	000.2500	0039.3	008.1	196.9	003.0000	0067.4	031.8	52.74	
328.0	000.2500	0038.7	008.0	196.6	003.0000	0067.2	031.7	52.75	
329.0	000.2500	0037.7	007.9	196.3	003.0000	0067.0	031.7	52.73	
330.0	000.2500	0036.6	007.8	196.0	003.0000	0066.9	031.7	52.73	
331.0	000.2500	0035.9	007.7	195.7	003.0000	0066.9	031.7	52.75	
332.0	000.2500	0035.3	007.6	195.5	003.0000	0066.9	031.6	52.77	
333.0	000.2500	0034.8	007.6	195.2	003.0000	0066.9	031.6	52.80	
334.0	000.2500	0034.2	007.5	195.0	003.0000	0067.0	031.5	52.82	
335.0	000.2500	0033.6	007.5	194.7	003.0000	0067.0	031.5	52.84	
336.0	000.2500	0033.1	007.4	194.5	003.0000	0067.1	031.4	52.88	
337.0	000.2500	0032.6	007.4	194.2	003.0000	0067.2	031.4	52.91	
338.0	000.2500	0032.2	007.3	194.0	003.0000	0067.3	031.4	52.95	
339.0	000.2500	0031.8	007.3	193.8	003.0000	0067.4	031.3	52.98	
340.0	000.2500	0031.4	007.2	193.5	003.0000	0067.5	031.3	53.01	
341.0	000.2500	0030.9	007.2	193.3	003.0000	0067.7	031.3	53.04	
342.0	000.2500	0030.3	007.1	193.0	003.0000	0067.8	031.2	53.06	
343.0	000.2500	0029.6	007.1	192.8	003.0000	0067.9	031.2	53.10	
344.0	000.2500	0028.9	007.1	192.6	003.0000	0068.1	031.1	53.14	
345.0	000.2500	0028.2	007.1	192.4	003.0000	0068.3	031.1	53.19	
346.0	000.2500	0027.6	007.1	192.2	003.0000	0068.4	031.0	53.24	
347.0	000.2500	0027.0	007.1	192.0	003.0000	0068.5	031.0	53.28	
348.0	000.2500	0026.5	007.1	191.8	003.0000	0068.6	030.9	53.32	
349.0	000.2500	0025.8	007.1	191.6	003.0000	0068.7	030.9	53.35	
350.0	000.2500	0025.3	007.1	191.4	003.0000	0068.8	030.8	53.38	
351.0	000.2500	0024.7	007.1	191.1	003.0000	0068.8	030.8	53.41	

Munn-Reese, Inc.  
 Broadcast Engineering Consultants  
 Coldwater, MI

# Exhibit 13.6

## W291BQ Protection to WUBU(FM) – South Bend, IN

352.0	000.2500	0024.5	007.1	190.9	003.0000	0068.9	030.7	53.43
353.0	000.2500	0024.2	007.1	190.7	003.0000	0068.9	030.7	53.46
354.0	000.2500	0023.6	007.1	190.5	003.0000	0068.9	030.7	53.48
355.0	000.2500	0023.6	007.1	190.3	003.0000	0068.9	030.6	53.50
356.0	000.2500	0023.8	007.1	190.0	003.0000	0068.9	030.6	53.52
357.0	000.2500	0024.2	007.1	189.8	003.0000	0069.0	030.6	53.54
358.0	000.2500	0024.3	007.1	189.6	003.0000	0069.0	030.6	53.55
359.0	000.2500	0024.0	007.1	189.4	003.0000	0069.0	030.5	53.57
000.0	000.2500	0023.5	007.1	189.1	003.0000	0069.0	030.5	53.58
001.0	000.2500	0023.1	007.1	188.9	003.0000	0069.0	030.5	53.59
002.0	000.2500	0023.4	007.1	188.7	003.0000	0069.1	030.5	53.61
003.0	000.2500	0023.8	007.1	188.4	003.0000	0069.2	030.5	53.62
004.0	000.2500	0024.3	007.1	188.2	003.0000	0069.2	030.5	53.64
005.0	000.2500	0024.8	007.1	188.0	003.0000	0069.3	030.4	53.65
006.0	000.2500	0025.3	007.1	187.7	003.0000	0069.4	030.4	53.66
007.0	000.2500	0025.6	007.1	187.5	003.0000	0069.5	030.4	53.67
008.0	000.2500	0025.7	007.1	187.3	003.0000	0069.6	030.4	53.68
009.0	000.2500	0025.9	007.1	187.0	003.0000	0069.6	030.4	53.69
010.0	000.2500	0026.2	007.1	186.8	003.0000	0069.7	030.4	53.69
011.0	000.2500	0026.5	007.1	186.6	003.0000	0069.8	030.5	53.70
012.0	000.2500	0026.9	007.1	186.3	003.0000	0069.8	030.5	53.70
013.0	000.2500	0026.7	007.1	186.1	003.0000	0070.0	030.5	53.71
014.0	000.2500	0026.6	007.1	185.9	003.0000	0070.1	030.5	53.71
015.0	000.2500	0026.7	007.1	185.7	003.0000	0070.2	030.5	53.72
016.0	000.2500	0026.7	007.1	185.4	003.0000	0070.3	030.5	53.72
017.0	000.2500	0027.0	007.1	185.2	003.0000	0070.4	030.6	53.72
018.0	000.2500	0027.2	007.1	185.0	003.0000	0070.6	030.6	53.73
019.0	000.2500	0027.4	007.1	184.7	003.0000	0070.6	030.6	53.72
020.0	000.2500	0027.3	007.1	184.5	003.0000	0070.7	030.6	53.71
021.0	000.2500	0027.2	007.1	184.3	003.0000	0070.7	030.7	53.69
022.0	000.2500	0027.1	007.1	184.1	003.0000	0070.7	030.7	53.67
023.0	000.2500	0027.1	007.1	183.9	003.0000	0070.7	030.8	53.66
024.0	000.2500	0027.2	007.1	183.6	003.0000	0070.8	030.8	53.64
025.0	000.2500	0027.4	007.1	183.4	003.0000	0070.8	030.8	53.62
026.0	000.2500	0027.7	007.1	183.2	003.0000	0070.8	030.9	53.60
027.0	000.2500	0028.1	007.1	183.0	003.0000	0070.8	030.9	53.57
028.0	000.2500	0028.6	007.1	182.8	003.0000	0070.8	031.0	53.54
029.0	000.2500	0028.8	007.1	182.6	003.0000	0070.8	031.0	53.52
030.0	000.2500	0029.3	007.1	182.4	003.0000	0070.7	031.1	53.49
031.0	000.2500	0029.6	007.1	182.2	003.0000	0070.7	031.2	53.45
032.0	000.2500	0030.0	007.1	182.0	003.0000	0070.6	031.2	53.41
033.0	000.2500	0030.3	007.1	181.8	003.0000	0070.6	031.3	53.39
034.0	000.2500	0030.5	007.1	181.6	003.0000	0070.6	031.3	53.36
035.0	000.2500	0030.7	007.2	181.3	003.0000	0070.6	031.4	53.34
036.0	000.2500	0030.8	007.2	181.1	003.0000	0070.6	031.4	53.31
037.0	000.2500	0030.6	007.2	181.0	003.0000	0070.5	031.5	53.26
038.0	000.2500	0030.5	007.1	180.8	003.0000	0070.5	031.6	53.22
039.0	000.2500	0030.4	007.1	180.6	003.0000	0070.5	031.7	53.18
040.0	000.2500	0030.7	007.2	180.4	003.0000	0070.5	031.7	53.15
041.0	000.2500	0031.1	007.2	180.2	003.0000	0070.6	031.8	53.14
042.0	000.2500	0031.5	007.2	180.0	003.0000	0070.6	031.8	53.12
043.0	000.2500	0031.6	007.3	179.8	003.0000	0070.6	031.9	53.08
044.0	000.2500	0031.8	007.3	179.6	003.0000	0070.6	032.0	53.05
045.0	000.2500	0032.0	007.3	179.4	003.0000	0070.6	032.1	53.02
046.0	000.2500	0032.3	007.3	179.2	003.0000	0070.7	032.1	52.99
047.0	000.2500	0032.6	007.3	179.1	003.0000	0070.7	032.2	52.96
048.0	000.2500	0032.8	007.4	178.9	003.0000	0070.7	032.3	52.92
049.0	000.2500	0032.9	007.4	178.7	003.0000	0070.7	032.4	52.88
050.0	000.2500	0033.0	007.4	178.6	003.0000	0070.7	032.5	52.84
051.0	000.2500	0032.9	007.4	178.4	003.0000	0070.7	032.6	52.79
052.0	000.2500	0033.0	007.4	178.3	003.0000	0070.7	032.7	52.75
053.0	000.2500	0033.2	007.4	178.1	003.0000	0070.7	032.8	52.70

Munn-Reese, Inc.  
Broadcast Engineering Consultants  
Coldwater, MI



**Exhibit 13.6**  
**W291BQ Protection to WUBU(FM) – South Bend, IN**

054.0	000.2500	0033.3	007.4		178.0	003.0000	0070.7	032.9	52.66
055.0	000.2500	0033.6	007.5		177.8	003.0000	0070.7	033.0	52.61
056.0	000.2500	0033.9	007.5		177.6	003.0000	0070.6	033.1	52.56
057.0	000.2500	0034.1	007.5		177.5	003.0000	0070.5	033.2	52.50
058.0	000.2500	0034.2	007.5		177.4	003.0000	0070.4	033.3	52.44
059.0	000.2500	0034.3	007.5		177.2	003.0000	0070.3	033.4	52.38
060.0	000.2500	0034.2	007.5		177.2	003.0000	0070.2	033.5	52.32
061.0	000.2500	0034.1	007.5		177.1	003.0000	0070.1	033.6	52.26
062.0	000.2500	0033.9	007.5		177.0	003.0000	0070.1	033.7	52.19
063.0	000.2500	0033.8	007.5		176.9	003.0000	0070.0	033.9	52.13
064.0	000.2500	0033.8	007.5		176.8	003.0000	0069.9	034.0	52.07
065.0	000.2500	0033.7	007.5		176.8	003.0000	0069.9	034.1	52.01
066.0	000.2500	0033.7	007.5		176.7	003.0000	0069.8	034.2	51.95
-----									

# Exhibit 13.6

## W291BQ Protection to WUBU(FM) – South Bend, IN

05-28-2014      Terrain Data: USGS 03 SEC      FMOver Analysis

WUBU BLH20090331ATJ

W291BQ

Channel = 292A  
Max ERP = 3 kW  
RCAMSL = 323 M  
N. Lat. 41 40 35.0  
W. Lng. 86 15 08.0  
Protected  
60 dBu

Channel = 291D  
Max ERP = 0.25 kW  
RCAMSL = 278.3 M  
N. Lat. 41 20 30.0  
W. Lng. 86 18 37.0  
Interfering  
54 dBu

Azimuth (degrees)	ERP (kW)	HAAT (m)	Dist (km)	Azimuth (degrees)	ERP (kW)	HAAT (m)	Dist (km)	Actual (dBu)	IX (km)
127.0	001.1391	0075.5	016.4	033.3	000.2500	0030.3	032.7	35.15	
128.0	001.1786	0073.9	016.4	033.2	000.2500	0030.3	032.4	35.25	
129.0	001.2188	0072.2	016.3	033.0	000.2500	0030.3	032.1	35.35	
130.0	001.2597	0070.6	016.3	032.9	000.2500	0030.2	031.9	35.45	
131.0	001.3219	0069.3	016.4	032.9	000.2500	0030.2	031.6	35.57	
132.0	001.3856	0068.1	016.4	033.0	000.2500	0030.3	031.3	35.70	
133.0	001.4507	0066.9	016.5	033.0	000.2500	0030.3	031.0	35.83	
134.0	001.5174	0066.2	016.6	033.1	000.2500	0030.3	030.7	35.97	
135.0	001.5856	0066.0	016.8	033.3	000.2500	0030.3	030.4	36.13	
136.0	001.6553	0066.0	017.0	033.6	000.2500	0030.4	030.0	36.30	
137.0	001.7264	0065.9	017.2	033.8	000.2500	0030.4	029.7	36.47	
138.0	001.7991	0065.8	017.3	034.0	000.2500	0030.5	029.4	36.66	
139.0	001.8732	0065.9	017.5	034.3	000.2500	0030.6	029.0	36.87	
140.0	001.9489	0066.1	017.8	034.5	000.2500	0030.7	028.7	37.07	
141.0	002.0285	0066.5	018.0	034.8	000.2500	0030.7	028.3	37.28	
142.0	002.1097	0066.9	018.2	035.1	000.2500	0030.7	027.9	37.50	
143.0	002.1926	0067.6	018.5	035.5	000.2500	0030.8	027.5	37.73	
144.0	002.2770	0068.3	018.8	035.8	000.2500	0030.8	027.1	37.96	
145.0	002.3630	0068.9	019.1	036.1	000.2500	0030.8	026.8	38.20	
146.0	002.4506	0069.3	019.3	036.3	000.2500	0030.7	026.4	38.44	
147.0	002.5398	0069.6	019.5	036.5	000.2500	0030.7	026.0	38.68	
148.0	002.6305	0069.7	019.7	036.7	000.2500	0030.7	025.6	38.93	
149.0	002.7229	0069.6	019.8	036.7	000.2500	0030.7	025.2	39.17	
150.0	002.8169	0069.1	019.9	036.6	000.2500	0030.7	024.8	39.42	
151.0	002.8349	0068.4	019.9	036.1	000.2500	0030.8	024.6	39.63	
152.0	002.8530	0067.8	019.8	035.7	000.2500	0030.8	024.3	39.83	
153.0	002.8712	0067.2	019.8	035.2	000.2500	0030.7	024.0	40.03	
154.0	002.8894	0067.0	019.8	034.8	000.2500	0030.7	023.7	40.23	
155.0	002.9077	0066.9	019.8	034.4	000.2500	0030.6	023.4	40.44	
156.0	002.9261	0067.0	019.8	034.1	000.2500	0030.5	023.0	40.64	
157.0	002.9445	0067.2	019.9	033.7	000.2500	0030.4	022.7	40.84	
158.0	002.9629	0067.3	020.0	033.3	000.2500	0030.3	022.4	41.06	
159.0	002.9814	0067.3	020.0	032.9	000.2500	0030.2	022.1	41.26	
160.0	003.0000	0067.5	020.0	032.4	000.2500	0030.1	021.8	41.47	
161.0	003.0000	0067.6	020.0	031.9	000.2500	0030.0	021.5	41.65	
162.0	003.0000	0067.5	020.0	031.2	000.2500	0029.7	021.3	41.85	
163.0	003.0000	0067.3	020.0	030.6	000.2500	0029.5	021.0	42.04	
164.0	003.0000	0067.1	020.0	029.9	000.2500	0029.2	020.8	42.22	
165.0	003.0000	0067.2	020.0	029.2	000.2500	0028.9	020.5	42.42	
166.0	003.0000	0067.3	020.0	028.5	000.2500	0028.7	020.3	42.62	
167.0	003.0000	0067.3	020.0	027.8	000.2500	0028.5	020.0	42.81	
168.0	003.0000	0067.3	020.0	027.0	000.2500	0028.1	019.8	42.98	
169.0	003.0000	0067.2	020.0	026.2	000.2500	0027.8	019.6	43.14	
170.0	003.0000	0067.2	020.0	025.3	000.2500	0027.5	019.4	43.31	
171.0	003.0000	0067.2	020.0	024.5	000.2500	0027.3	019.2	43.48	
172.0	003.0000	0067.3	020.0	023.7	000.2500	0027.1	019.0	43.64	

Munn-Reese, Inc.  
Broadcast Engineering Consultants  
Coldwater, MI

# Exhibit 13.6

## W291BQ Protection to WUBU(FM) – South Bend, IN

173.0	003.0000	0067.5	020.0	022.8	000.2500	0027.1	018.8	43.80
174.0	003.0000	0067.7	020.1	021.9	000.2500	0027.1	018.6	43.96
175.0	003.0000	0068.3	020.2	021.0	000.2500	0027.2	018.4	44.15
176.0	003.0000	0069.2	020.3	020.2	000.2500	0027.3	018.1	44.36
177.0	003.0000	0070.1	020.4	019.3	000.2500	0027.3	017.9	44.57
178.0	003.0000	0070.7	020.5	018.3	000.2500	0027.2	017.6	44.75
179.0	003.0000	0070.7	020.5	017.2	000.2500	0027.0	017.5	44.85
180.0	003.0000	0070.6	020.5	016.1	000.2500	0026.7	017.4	44.92
181.0	003.0000	0070.5	020.5	015.0	000.2500	0026.7	017.4	44.99
182.0	003.0000	0070.6	020.5	013.8	000.2500	0026.6	017.3	45.07
183.0	003.0000	0070.8	020.5	012.7	000.2500	0026.8	017.2	45.15
184.0	003.0000	0070.7	020.5	011.5	000.2500	0026.8	017.1	45.18
185.0	003.0000	0070.6	020.5	010.3	000.2500	0026.3	017.1	45.20
186.0	003.0000	0070.0	020.4	009.1	000.2500	0026.0	017.2	45.16
187.0	003.0000	0069.6	020.3	007.9	000.2500	0025.7	017.2	45.12
188.0	003.0000	0069.3	020.3	006.7	000.2500	0025.6	017.2	45.09
189.0	003.0000	0069.0	020.2	005.5	000.2500	0025.1	017.3	45.04
190.0	003.0000	0068.9	020.2	004.4	000.2500	0024.5	017.3	45.01
191.0	003.0000	0068.8	020.2	003.2	000.2500	0024.0	017.4	44.96
192.0	003.0000	0068.5	020.2	002.1	000.2500	0023.4	017.5	44.88
193.0	003.0000	0067.8	020.1	001.0	000.2500	0023.1	017.7	44.74
194.0	003.0000	0067.3	020.0	360.0	000.2500	0023.5	017.8	44.62
195.0	003.0000	0066.9	020.0	358.9	000.2500	0024.0	017.9	44.51
196.0	003.0000	0066.9	019.9	357.9	000.2500	0024.3	018.0	44.41
197.0	003.0000	0067.5	020.0	356.8	000.2500	0024.1	018.1	44.39
198.0	003.0000	0068.1	020.1	355.6	000.2500	0023.7	018.1	44.35
199.0	003.0000	0068.5	020.2	354.5	000.2500	0023.6	018.2	44.27
200.0	003.0000	0068.6	020.2	353.5	000.2500	0023.8	018.4	44.16
201.0	003.0000	0068.6	020.2	352.5	000.2500	0024.4	018.5	44.03
202.0	003.0000	0068.6	020.2	351.6	000.2500	0024.6	018.7	43.88
203.0	003.0000	0068.7	020.2	350.7	000.2500	0024.9	018.9	43.75
204.0	003.0000	0068.7	020.2	349.8	000.2500	0025.4	019.1	43.59
205.0	003.0000	0069.3	020.3	348.8	000.2500	0025.9	019.2	43.48
206.0	003.0000	0070.6	020.5	347.6	000.2500	0026.7	019.3	43.42
207.0	003.0000	0070.9	020.5	346.7	000.2500	0027.2	019.5	43.26
208.0	003.0000	0071.9	020.6	345.6	000.2500	0027.8	019.6	43.16
209.0	003.0000	0073.9	020.9	344.3	000.2500	0028.7	019.6	43.11
210.0	003.0000	0076.6	021.3	342.8	000.2500	0029.7	019.7	43.10
211.0	003.0000	0078.4	021.5	341.6	000.2500	0030.6	019.8	43.16
212.0	003.0000	0080.8	021.8	340.2	000.2500	0031.3	019.9	43.27
213.0	003.0000	0082.8	022.1	338.9	000.2500	0031.9	020.0	43.28
214.0	003.0000	0084.9	022.4	337.6	000.2500	0032.4	020.2	43.28
215.0	003.0000	0087.4	022.7	336.3	000.2500	0032.9	020.3	43.28
216.0	003.0000	0090.7	023.1	334.7	000.2500	0033.8	020.5	43.39
217.0	003.0000	0093.2	023.4	333.4	000.2500	0034.6	020.7	43.41
218.0	003.0000	0094.9	023.6	332.4	000.2500	0035.2	021.0	43.33
219.0	003.0000	0095.9	023.7	331.7	000.2500	0035.6	021.3	43.17
220.0	003.0000	0096.4	023.8	331.1	000.2500	0035.8	021.7	42.95
221.0	003.0000	0097.0	023.9	330.6	000.2500	0036.2	022.0	42.75
222.0	003.0000	0097.8	024.0	330.0	000.2500	0036.6	022.4	42.58
223.0	003.0000	0098.5	024.1	329.5	000.2500	0037.2	022.8	42.43
224.0	003.0000	0099.5	024.2	328.9	000.2500	0037.8	023.1	42.30
225.0	003.0000	0100.5	024.3	328.4	000.2500	0038.5	023.5	42.16
226.0	003.0000	0101.3	024.4	327.9	000.2500	0038.8	023.9	41.95
227.0	003.0000	0101.8	024.4	327.6	000.2500	0038.9	024.3	41.70
228.0	003.0000	0102.3	024.5	327.3	000.2500	0039.1	024.7	41.45
229.0	003.0000	0103.0	024.6	327.0	000.2500	0039.3	025.2	41.21
230.0	003.0000	0103.9	024.7	326.6	000.2500	0039.5	025.6	40.96
231.0	003.0000	0104.8	024.8	326.3	000.2500	0039.6	026.0	40.72
232.0	003.0000	0105.7	024.9	326.0	000.2500	0039.7	026.4	40.46
233.0	003.0000	0106.7	025.0	325.7	000.2500	0039.8	026.8	40.22
234.0	003.0000	0107.8	025.1	325.4	000.2500	0039.9	027.3	39.96

Munn-Reese, Inc.  
Broadcast Engineering Consultants  
Coldwater, MI

**Exhibit 13.6**  
**W291BQ Protection to WUBU(FM) – South Bend, IN**

235.0	003.0000	0108.5	025.2		325.3	000.2500	0039.9	027.7	39.69
236.0	003.0000	0108.9	025.2		325.2	000.2500	0039.9	028.1	39.44
237.0	003.0000	0109.1	025.2		325.2	000.2500	0039.9	028.6	39.18
238.0	003.0000	0109.3	025.2		325.2	000.2500	0039.9	029.0	38.94
239.0	003.0000	0109.5	025.3		325.2	000.2500	0039.9	029.5	38.70
240.0	003.0000	0109.5	025.3		325.2	000.2500	0039.9	029.9	38.47
241.0	003.0000	0109.6	025.3		325.3	000.2500	0039.9	030.3	38.25
242.0	003.0000	0109.6	025.3		325.4	000.2500	0039.9	030.8	38.04
243.0	003.0000	0109.4	025.3		325.5	000.2500	0039.9	031.2	37.83
244.0	003.0000	0108.9	025.2		325.7	000.2500	0039.8	031.6	37.63
245.0	003.0000	0108.8	025.2		325.9	000.2500	0039.8	032.1	37.44
246.0	003.0000	0108.4	025.1		326.1	000.2500	0039.7	032.5	37.24
-----									