

EXHIBIT 13

Waiver Request of Section 74.1204

W211AY Minor Displacement Change to Channel 204

10 Watts ERP

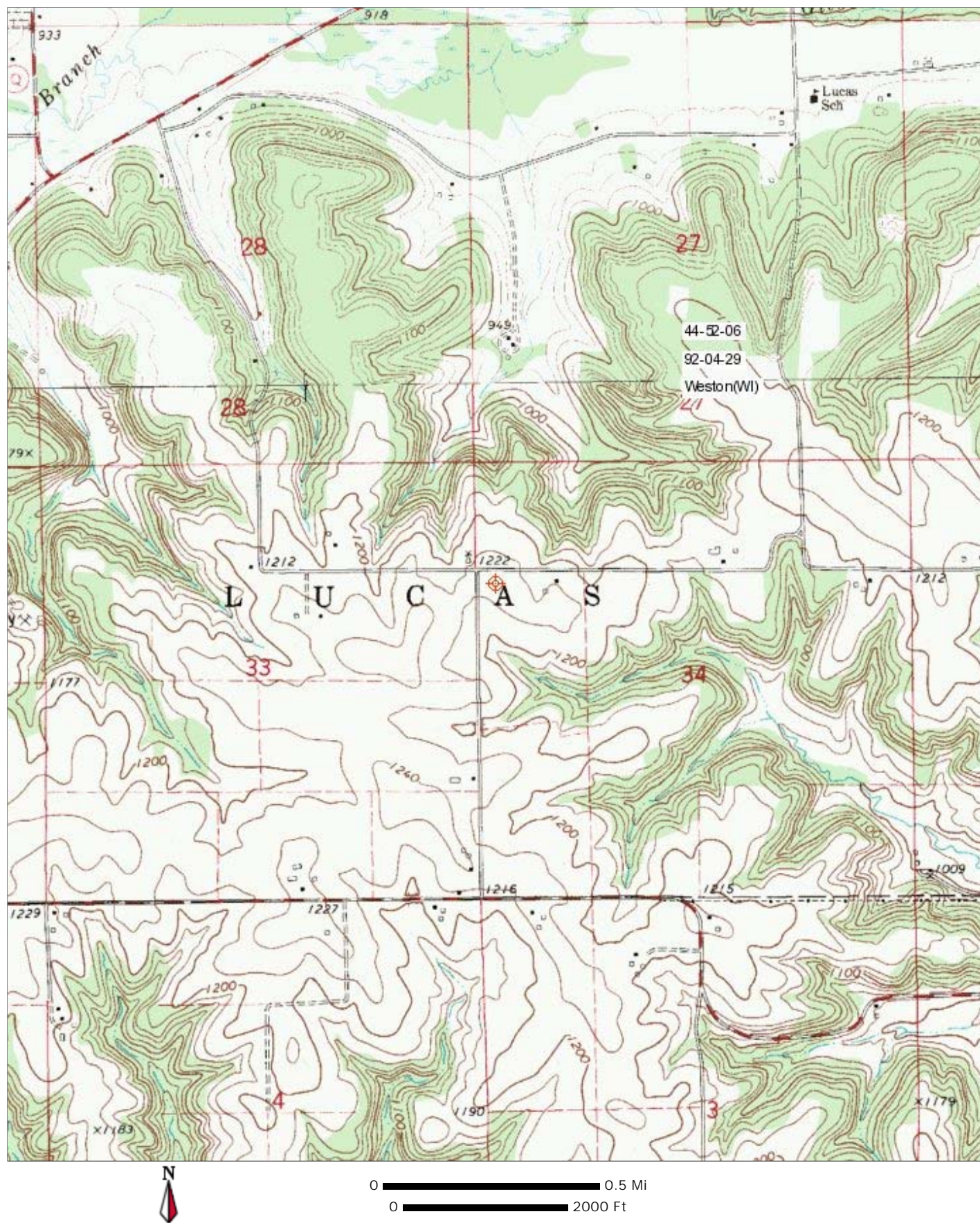
Calvary Chapel of Twin Falls, Inc.

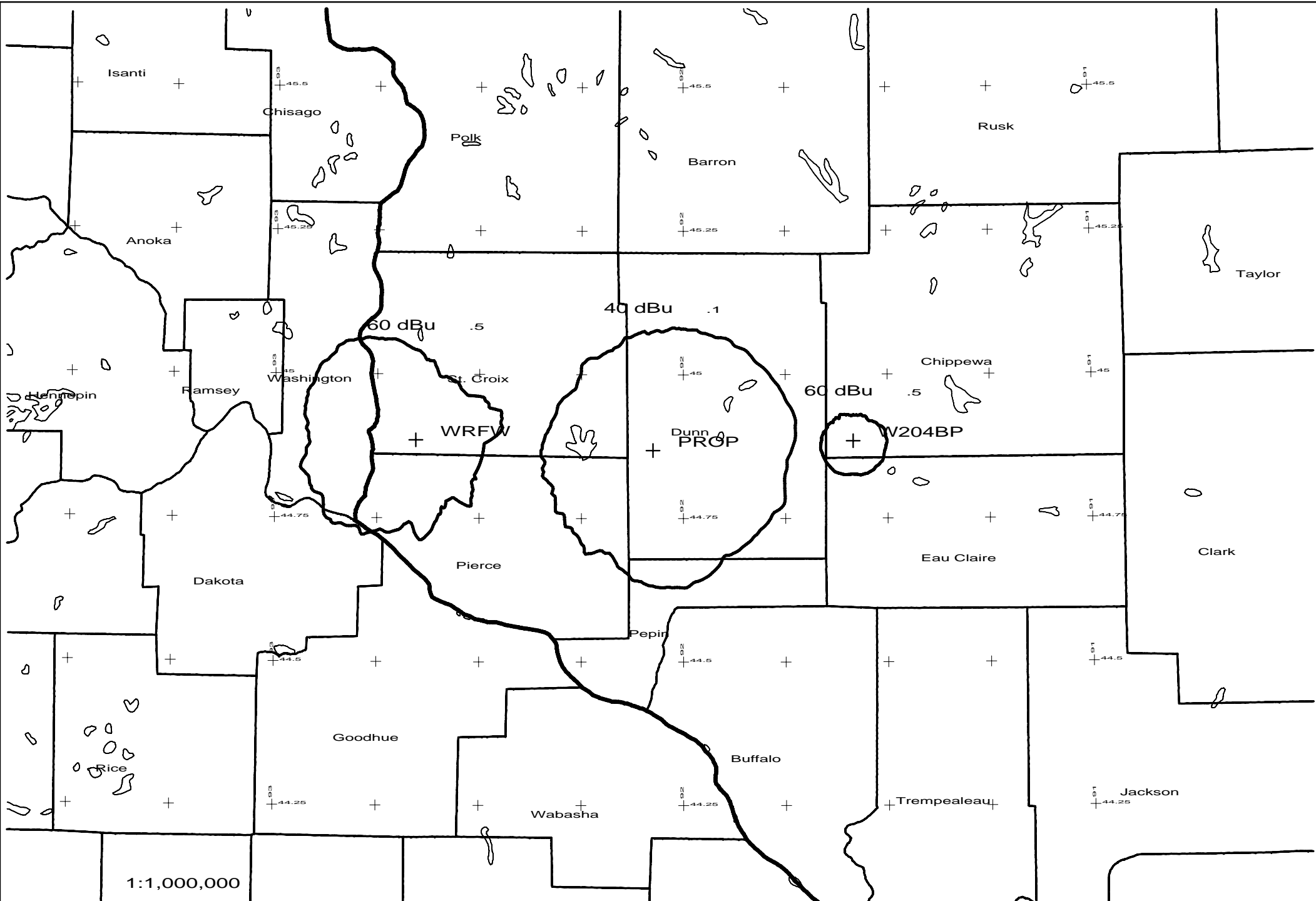
January 2011

The proposed site is contained entirely inside the service contour of second-adjacent station WHWC Menomonie, WI

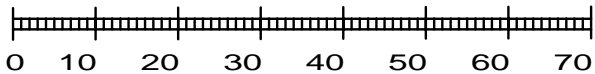
WHWC

The proposed site is contained entirely inside the service contour of second-adjacent FM Station WHWC, 202C1, 71kW, Menomonie, WI. The level of least arriving protected F(50,50) signal at the proposed transmitter site is 78.5-dBu. Using the Undesired-to-Desired method for calculating proposed interference, the interfering contour is 118.8-dBu (free-space contour method employed). The interfering signal would, in the worst case at the maximum radial extend 27 meters from the center of radiation, which is at 96 meters AGL. This interference contour doesn't touch the ground. The antenna and coax will not be changed, only the frequency. Attached is a section of the USGS Weston (WI) Quadrangle, which shows that this tower is not located in a populated area and there will be no residences, businesses or major roadways that will be affected, therefore Calvary Chapel of Twin Falls, Inc. respectfully requests a waiver of the FM translator contour overlap regulations with respect to second-adjacent channel WHWC.





Scale in km



PROP 204D .01kW 469M AMSL

N. Lat. 44 52 06 W. Lng. 92 04 29

PROP VS WRFW

CCTF - 01/11