

TECHNICAL EXHIBIT  
APPLICATION FOR DTV CONSTRUCTION PERMIT  
IN SUPPORT OF ITS POST-TRANSITION FACILITY  
STATION WTOL-DT (FACILITY ID 13992)  
TOLEDO, OHIO

MARCH 28, 2008

CH 11 17.6 KW (MAX-DA) 304 M

TECHNICAL EXHIBIT  
APPLICATION FOR DTV CONSTRUCTION PERMIT  
IN SUPPORT OF ITS POST-TRANSITION FACILITY  
STATION WTOL-DT (FACILITY ID 13992)  
TOLEDO, OHIO  
CH 11 17.6 KW (MAX-DA) 304 M

Table of Contents

Technical Narrative

Figure 1	Antenna and Supporting Structure
Figure 2	Antenna Patterns
Figure 3	Predicted FCC Coverage Contours
Figure 4	OET-69 Interference Analysis

TECHNICAL EXHIBIT  
APPLICATION FOR DTV CONSTRUCTION PERMIT  
IN SUPPORT OF ITS POST-TRANSITION FACILITY  
STATION WTOL-DT (FACILITY ID 13992)  
TOLEDO, OHIO  
CH 11 17.6 KW (MAX-DA) 304 M

Technical Narrative {Up To 5-Mile Waiver Request}

This Technical Exhibit supports an application for digital television (DTV) station WTOL-DT for its final DTV operation at Toledo, Ohio. This application requests a construction permit (CP) for a digital television operation on channel 11, using a new, top-mounted directional antenna.

Proposed Facilities

Station WTOL-DT proposes to operate DTV channel 11 from its analog transmitter site, with a directional antenna maximum effective radiated power (ERP) of 17.6 kilowatts and antenna height above average terrain (HAAT) of 304 meters. The transmitter site coordinates are:

41° 40' 22" North Latitude  
83° 22' 47" West Longitude

A sketch of antenna and pertinent elevations are included as Figure 1. The antenna structure registration number is 1015681. Figure 2 depicts the proposed antenna patterns

Figure 3 is a map showing the DTV predicted coverage contours as well as the associated analog Grade B and Appendix B allotment coverage contours. A 5-mile buffer has been added to the Appendix B allotment coverage contour. The extent of the proposed 17.6 kW contour has been calculated using the normal FCC prediction method. The predicted 36 dBu contour will not extend beyond the 5-mile buffer at any location.

The proposed 43 dBu contour will encompass all of Toledo. The Toledo city limits were derived from information contained in the 2000 U.S. Census of Population and Housing.

#### Population Served

The herein proposed WTOL-DT facility is predicted to serve 2,532,245 persons, post-transition, based upon the 2000 Census. WTOL-DT's associated Appendix B facility is predicted to serve 2,388,149 persons. Therefore, the herein proposed WTOL-DT facility would serve more than 100% of WTOL-DT's Appendix B population.

#### Allocation Considerations

Since the proposed WTOL-DT ERP exceeds the Commission's *Appendix B* allocated maximum effective radiated power in some azimuthal directions<sup>1</sup>, a waiver of the current freeze on filing DTV maximization applications is hereby requested. The proposed facilities would (1) create a contour that does not extend more than 5 miles in any direction beyond the Appendix B contour; (2) not create more than 0.5% new interference to any other station; and (3) would allow WTOL-DT to use a new antenna to avoid a significant reduction in post-transition service from its analog service area.

---

<sup>1</sup> See Seventh Report And Order And Eighth Further Notice Of Proposed Rule Making in the Matter of Advanced Television Systems and their Impact Upon

In support of this waiver request, an allocation study was completed to ensure no prohibited interference would occur. The proposed WTOL-DT operation meets the FCC's post-transition interference standards to pertinent Class A and DTV allotments using the procedures outlined in the FCC's OET-69 Bulletin and a 2 kilometer grid cell size. The results of the interference analyses are summarized in Figure 4.

#### Canadian Allocation Studies

The proposal will increase the ERP in the direction of Canada, as compared to the Appendix B facility. However, the proposal appears to meet all of the minimum separation requirements to Canadian stations, as outlined in the U.S./Canadian Letter of Understanding. If coordination with Canada is necessary, it is respectfully requested.

#### Radiofrequency Electromagnetic Field Exposure

The proposed WTOL-DT facilities were evaluated in terms of potential radio frequency (RF) energy exposure at ground level to workers and the general public. The radiation center for the proposed DTV antenna is located 305 meters above ground level with a maximum ERP of 17.6 kW. A conservative relative field value of 0.3 was assumed for the calculation (see Figure 2). The calculated power density at a point 2 meters above ground level will not exceed  $0.0006 \text{ mW/cm}^2$ . This is less than 5% of the FCC's recommended limit of  $0.2 \text{ mW/cm}^2$  for channel 11 for an "uncontrolled" environment.

Access to the transmitting site will be restricted and appropriately marked with warning signs. In the event that workers or other authorized personnel enter restricted areas

or climb the tower, appropriate measures will be taken to assure worker safety with respect to radio frequency radiation exposure. Such measures include reducing the average exposure by spreading out the work over a longer period of time, wearing "accepted" RFR protective clothing and/or RFR exposure monitors or scheduling work when the station is at reduced power or shut down. The proposed WTOL-DT operation appears to be otherwise categorically excluded from environmental processing.

It is noted that this statement only addresses the potential for radiofrequency electromagnetic field exposure. All other aspects of the environmental processing analysis will be or already have been provided to the FCC by the tower owner.



Jonathan N. Edwards

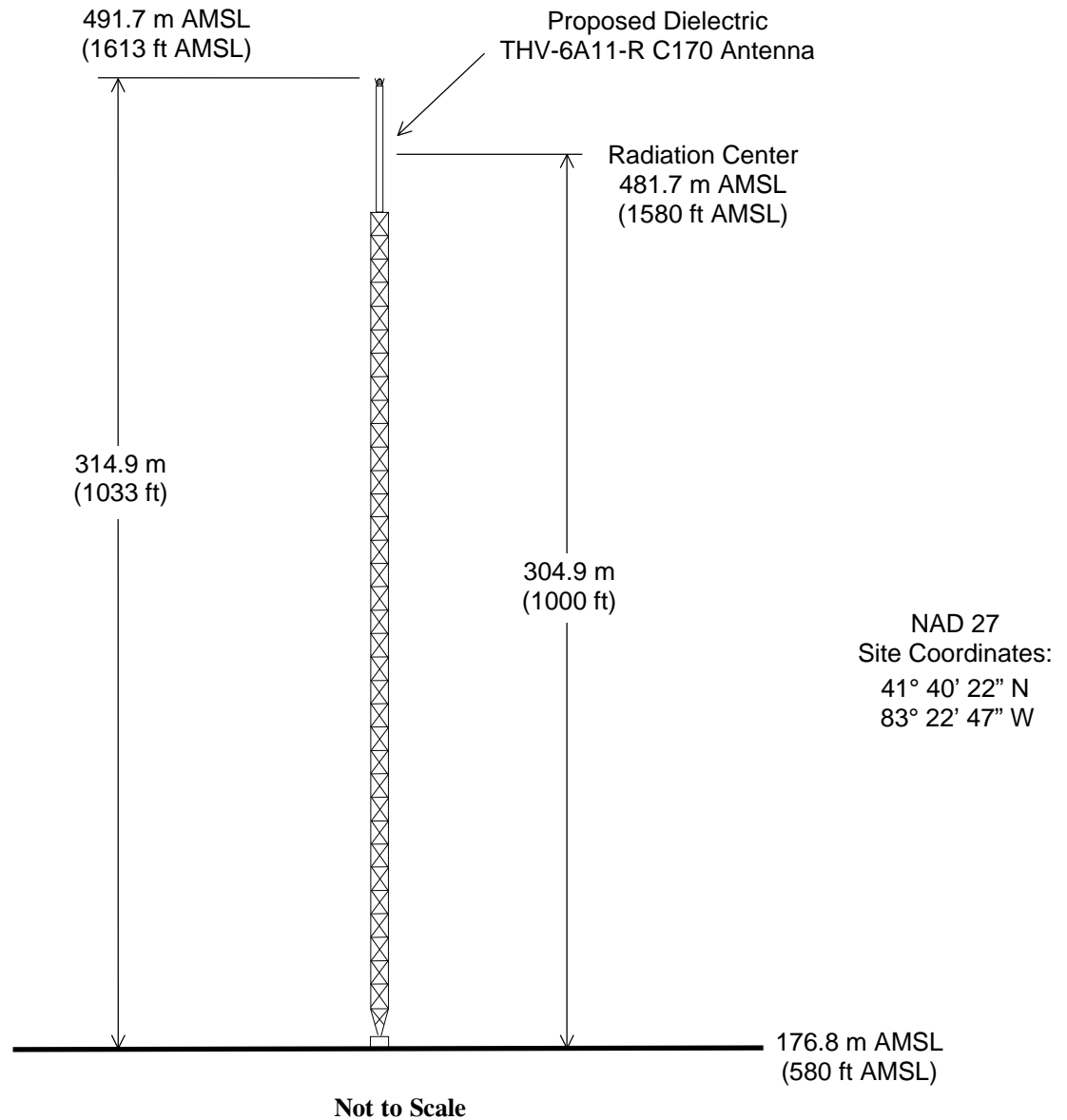
du Treil, Lundin & Rackley, Inc.  
201 Fletcher Avenue  
Sarasota, Florida 34237  
(941) 329-6000  
JON@DLR.COM

March 28, 2008

Figure 1



Registration No. 1015681



## ANTENNA AND SUPPORTING STRUCTURE

STATION WTOL-DT

TOLEDO, OHIO

CH 11 17.6 KW (MAX-DA) 304 M

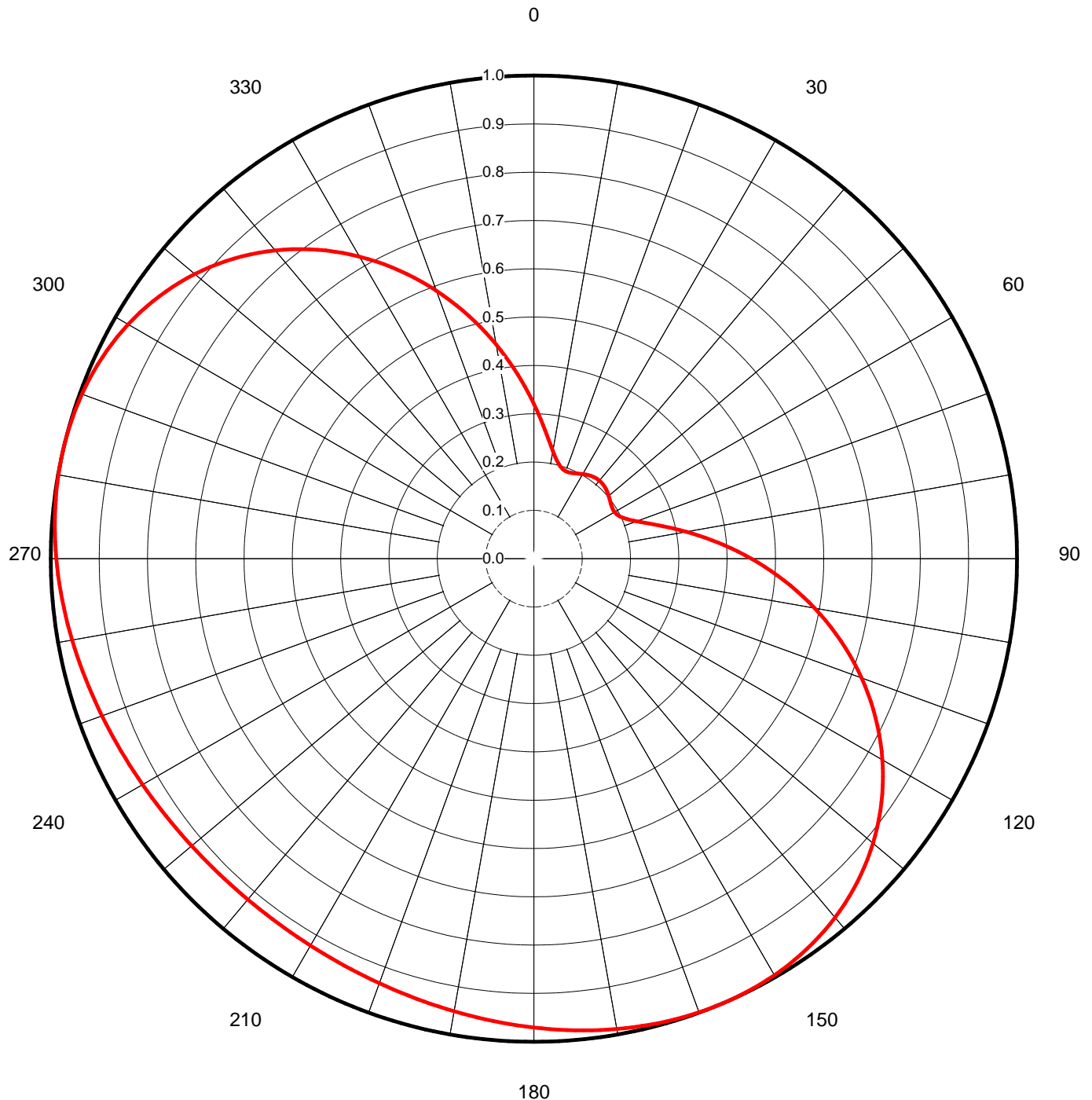
du Treil, Lundin & Rackley, Inc. Sarasota, Florida

Proposal Number	<b>C-02296</b>	
Date	<b>19-Feb-08</b>	
Call Letters	<b>WTOL</b>	Channel <b>11</b>
Location	<b>Toledo, OH</b>	
Customer		
Antenna Type	<b>THV-6A11-R C170</b>	

**AZIMUTH PATTERN**

Gain **1.70** **( 2.30 dB)**  
 Calculated / Measured **Calculated**

Frequency **201.00 MHz**  
 Drawing # **THV-C170**







Proposal Number **C-02296**  
Date **19-Feb-08**  
Call Letters **WTOL**  
Location **Toledo, OH**  
Customer  
Antenna Type **THV-6A11-R C170**

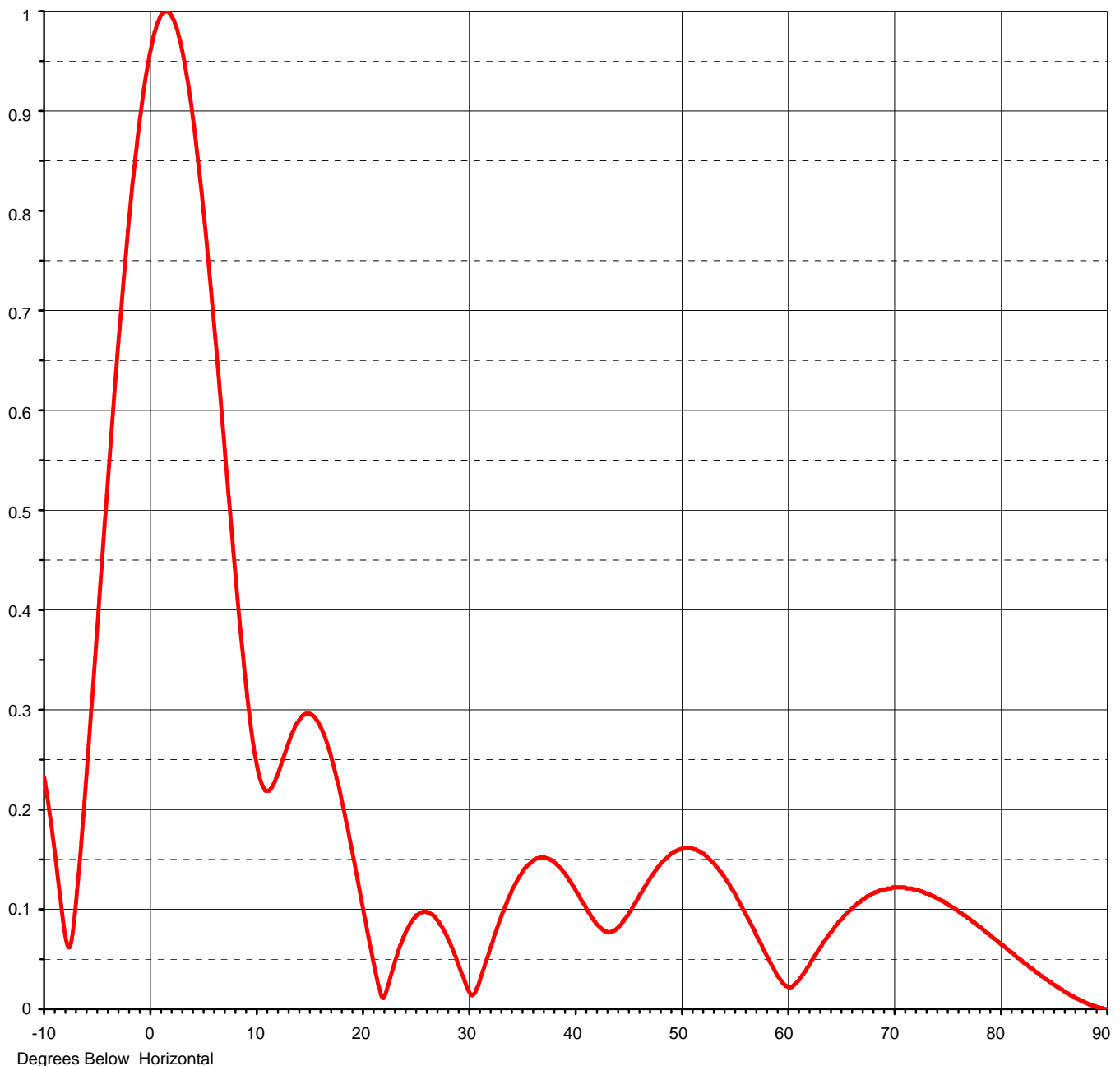
**Figure 2**

Channel **11**

## ELEVATION PATTERN

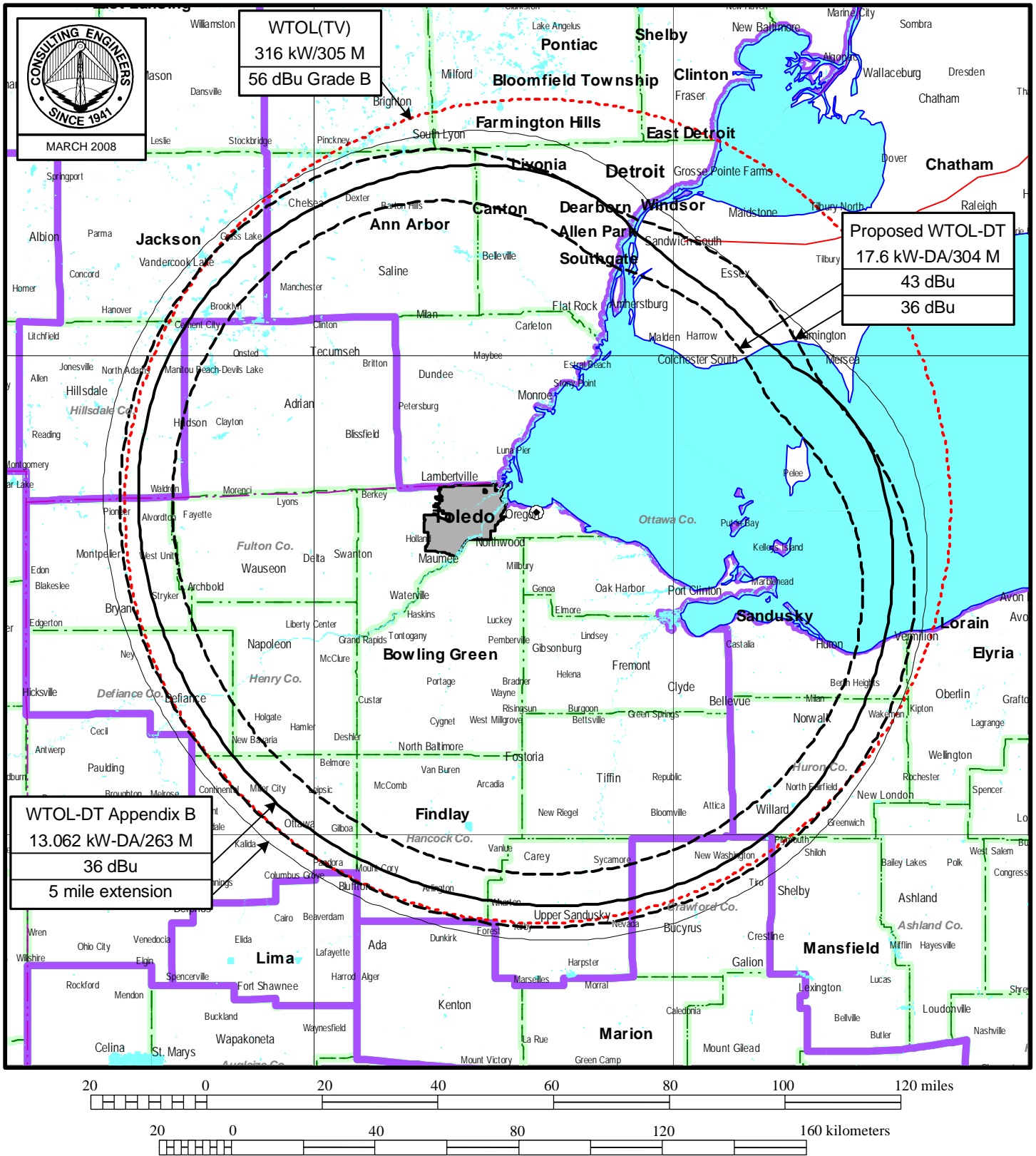
RMS Gain at Main Lobe **6.00 ( 7.78 dB )**  
RMS Gain at Horizontal **5.50 ( 7.40 dB )**  
Calculated / Measured **Calculated**

Beam Tilt **1.50 deg**  
Frequency **201.00 MHz**  
Drawing # **06V060150-90**



This document contains proprietary and confidential information of Dielectric Communications and SPX Corporation. It is to be used solely for the purpose for which it is provided. No disclosure, reproduction, or use of this document or any part of it may be made without the written permission of Dielectric Communications or SPX Corporation.

Figure 3



$\frac{0}{0}$

## Analysis of Interference to Affected Station 1

## Analysis of current record

Channel	Call	City/State	Application	Ref. No.
10	WILX-TV	ONONDAGA MI	BDTV	-00000078

## Stations Potentially Affecting This Station

Chan	Call	City/State	Dist(km)	Status	Application	Ref. No.
09	WWTW	CADILLAC MI	198.3	CP	BDTV	-00000055
10	WWTO-TV	LASALLE IL	383.6	CP	BPCDT	-19991013ABO
10	WTHI-TV	TERRE HAUTE IN	427.0	CP	BDTV	-00000069
10	WWUP-TV	SAULT STE. MARIE MI	404.2	CP	BDTV	-00000076
10	WCPO-TV	CINCINNATI OH	368.8	CP	BDTV	-00000060
10	WOIO	SHAKER HEIGHTS OH	265.3	LIC	BLCDDT	-19991110AAR
11	WGVU-TV	GRAND RAPIDS MI	122.4	CP MOD	BMPEDT	-20031024AAN
11	WTOL	TOLEDO OH	130.4	APP	USERRECORD-01	

Total scenarios = 1

Result key: 1

Scenario 1 Affected station 1

Before Analysis

Results for: 10A MI ONONDAGA BDTV 00000078 CP

HAAT 299.0 m, ATV ERP 11.6 kW

	POPULATION	AREA (sq km)
within Noise Limited Contour	2406574	27275.5
not affected by terrain losses	2311314	26861.1
lost to NTSC IX	0	0.0
lost to additional IX by ATV	27264	334.0
lost to ATV IX only	27264	334.0
lost to all IX	27264	334.0

Potential Interfering Stations Included in above Scenario 1

10A IL LASALLE	BPCDT	19991013ABO	CP
10A OH CINCINNATI	BDTV	00000060	CP
10A OH SHAKER HEIGHTS	BLCDDT	19991110AAR	LIC
11A MI GRAND RAPIDS	BMPEDT	20031024AAN	CP
11A OH TOLEDO	BLCDDT	20031103ABR	LIC

After Analysis

Results for: 10A MI ONONDAGA BDTV 00000078 CP

HAAT 299.0 m, ATV ERP 11.6 kW

	POPULATION	AREA (sq km)
within Noise Limited Contour	2406574	27275.5
not affected by terrain losses	2311314	26861.1
lost to NTSC IX	0	0.0
lost to additional IX by ATV	32452	478.8
lost to ATV IX only	32452	478.8
lost to all IX	32452	478.8

Potential Interfering Stations Included in above Scenario 1

10A IL LASALLE	BPCDT	19991013ABO	CP
10A OH CINCINNATI	BDTV	00000060	CP
10A OH SHAKER HEIGHTS	BLCDDT	19991110AAR	LIC
11A MI GRAND RAPIDS	BMPEDT	20031024AAN	CP
11A OH TOLEDO	USERRECORD01		APP

Percent new IX = 0.2271%

Worst case new IX 0.2217% Scenario 1

#####

Analysis of Interference to Affected Station 2

## Analysis of current record

Channel	Call	City/State	Application	Ref. No.
---------	------	------------	-------------	----------

10 WOIO SHAKER HEIGHTS OH BLCDT -19991110AAR

## Stations Potentially Affecting This Station

Chan	Call	City/State	Dist(km)	Status	Application	Ref. No.
09	WTOV-TV	STEUBENVILLE OH	147.1	CP MOD	BMPCDT	-20020408AAK
10	WILX-TV	ONONDAGA MI	265.3	CP	BDTV	-00000078
10	WHEC-TV	ROCHESTER NY	390.0	CP	BDTV	-00000079
10	WCPO-TV	CINCINNATI OH	346.1	CP	BDTV	-00000060
10	WHTM-TV	HARRISBURG PA	416.3	CP	BPRM	-20010514ABX
10	WVFX	CLARKSBURG WV	258.7	CP MOD	BMPCDT	-20020930AAV
10	WSWPTV	GRANDVIEW WV	392.7	LIC	BLET	-830831KF
11	WPCW	JEANETTE PA	195.1	CP	BPCDT	-20060510AAI
11	WTOL	TOLEDO OH	143.7	APP	USERRECORD-01	

Proposal causes no interference

#####

## Analysis of Interference to Affected Station 3

## Analysis of current record

Channel	Call	City/State	Application	Ref. No.
11	WLFI-TV	LAFAYETTE IN	BMPCDT	-20030116ABG

## Stations Potentially Affecting This Station

Chan	Call	City/State	Dist(km)	Status	Application	Ref. No.
10	WWTG-TV	LASALLE IL	219.1	CP	BPCDT	-19991013ABO
10	WTHI-TV	TERRE HAUTE IN	143.4	CP	BDTV	-00000069
10	WCPO-TV	CINCINNATI OH	228.8	CP	BDTV	-00000060
11	WHAS-TV	LOUISVILLE KY	235.3	LIC	BLCDT	-20020503AAT
11	WGVU-TV	GRAND RAPIDS MI	291.9	CP MOD	BMPEDT	-20031024AAN
11	WMSN-TV	MADISON WI	382.9	CP	BPCDT	-19991101AIM
12	WBBM-TV	CHICAGO IL	186.4	CP	BFRCTT	-20050303AAG
12	WINM	ANGOLA IN	192.7	LIC	BLCDT	-20021025AAN
11	WTOL	TOLEDO OH	306.3	APP	USERRECORD-01	

Total scenarios = 1

Result key: 2

Scenario 1 Affected station 3

Before Analysis

Results for: 11A IN LAFAYETTE BMPCDT 20030116ABG CP

HAAT 214.0 m, ATV ERP 30.0 kW

	POPULATION	AREA (sq km)
within Noise Limited Contour	2065906	27816.9
not affected by terrain losses	2044503	27307.6
lost to NTSC IX	0	0.0
lost to additional IX by ATV	21537	453.2
lost to ATV IX only	21537	453.2
lost to all IX	21537	453.2

Potential Interfering Stations Included in above Scenario 1

10A IN TERRE HAUTE	BDTV	00000069	CP
11A KY LOUISVILLE	BLCDT	20020503AAT	LIC
11A MI GRAND RAPIDS	BMPEDT	20031024AAN	CP

After Analysis

Results for: 11A IN LAFAYETTE BMPCDT 20030116ABG CP

HAAT 214.0 m, ATV ERP 30.0 kW

	POPULATION	AREA (sq km)
within Noise Limited Contour	2065906	27816.9
not affected by terrain losses	2044503	27307.6
lost to NTSC IX	0	0.0
lost to additional IX by ATV	21637	469.2
lost to ATV IX only	21637	469.2
lost to all IX	21637	469.2

Potential Interfering Stations Included in above Scenario 1

10A IN TERRE HAUTE	BDTV	00000069	CP
11A KY LOUISVILLE	BLCDT	20020503AAT	LIC
11A MI GRAND RAPIDS	BMPEDT	20031024AAN	CP
11A OH TOLEDO	USERRECORD01		APP

Percent new IX = 0.0049%

Worst case new IX 0.0049% Scenario 1

#####

Analysis of Interference to Affected Station 4

Analysis of current record

Channel	Call	City/State	Application Ref. No.
11	WHAS-TV	LOUISVILLE KY	BLCDT -20020503AAT

Stations Potentially Affecting This Station

Chan	Call	City/State	Dist(km)	Status	Application Ref. No.
10	WTHI-TV	TERRE HAUTE IN	165.7	CP	BDTV -00000069
10	WCPO-TV	CINCINNATI OH	144.8	CP	BDTV -00000060
11	WLFI-TV	LAFAYETTE IN	235.3	CP MOD	BMPCDT -20030116ABG
11	WJHL-TV	JOHNSON CITY TN	391.2	CP	BPCDT -19991025ADN
12	WKRC-TV	CINCINNATI OH	144.1	CP	BDTV -00000102
11	WTOL	TOLEDO OH	424.2	APP	USERRECORD-01

Proposal causes no interference

#####

Analysis of Interference to Affected Station 5

Analysis of current record

Channel	Call	City/State	Application Ref. No.
11	WBKB-TV	ALPENA MI	BPCDT -19991101AHA

Stations Potentially Affecting This Station

Chan	Call	City/State	Dist(km)	Status	Application Ref. No.
10	WWUP-TV	SAULT STE. MARIE MI	157.8	CP	BDTV -00000076
11	WGVU-TV	GRAND RAPIDS MI	271.5	CP MOD	BMPEDT -20031024AAN
11	WLUK-TV	GREEN BAY WI	355.3	CP	BDTV -00000091
12	WJRT-TV	FLINT MI	169.2	CP	BDTV -00000104
11	WTOL	TOLEDO OH	337.0	APP	USERRECORD-01

Proposal causes no interference

#####

Analysis of Interference to Affected Station 6

Analysis of current record

Channel	Call	City/State	Application Ref. No.
11	WGVU-TV	GRAND RAPIDS MI	BMPEDT -20031024AAN

Stations Potentially Affecting This Station

Chan	Call	City/State	Dist(km)	Status	Application Ref. No.
10	WILX-TV	ONONDAGA MI	122.4	CP	BDTV -00000078
11	WLFI-TV	LAFAYETTE IN	291.9	CP MOD	BMPCDT -20030116ABG
11	WBKB-TV	ALPENA MI	271.5	CP	BPCDT -19991101AHA
11	WLUK-TV	GREEN BAY WI	233.0	CP	BDTV -00000091
11	WMSN-TV	MADISON WI	296.0	CP	BPCDT -19991101AIM
12	WBBM-TV	CHICAGO IL	186.6	CP	BFRCTT -20050303AAG
12	WINM	ANGOLA IN	190.0	LIC	BLCDT -20021025AAN
12	WJRT-TV	FLINT MI	152.0	CP	BDTV -00000104
11	WTOL	TOLEDO OH	251.4	APP	USERRECORD-01

Total scenarios = 1

Result key: 3

Scenario 1 Affected station 6

Before Analysis

Results for: 11A MI GRAND RAPIDS BMPEDT 20031024AAN CP  
 HAAT 238.0 m, ATV ERP 50.0 kW  
 POPULATION AREA (sq km)

within Noise Limited Contour	1790126	28225.9
not affected by terrain losses	1752483	27285.6
lost to NTSC IX	0	0.0
lost to additional IX by ATV	54302	1521.5
lost to ATV IX only	54302	1521.5
lost to all IX	54302	1521.5

Potential Interfering Stations Included in above Scenario 1

10A MI ONONDAGA	BDTV	00000078	CP
11A IN LAFAYETTE	BMPCDT	20030116ABG	CP
11A MI ALPENA	BPCDT	19991101AHA	CP
11A WI GREEN BAY	BDTV	00000091	CP
11A WI MADISON	BPCDT	19991101AIM	CP
11A OH TOLEDO	BLCDT	20031103ABR	LIC

#### After Analysis

Results for: 11A MI GRAND RAPIDS BMPEDT 20031024AAN CP

HAAT 238.0 m, ATV ERP 50.0 kW

	POPULATION	AREA (sq km)
within Noise Limited Contour	1790126	28225.9
not affected by terrain losses	1752483	27285.6
lost to NTSC IX	0	0.0
lost to additional IX by ATV	61872	1622.4
lost to ATV IX only	61872	1622.4
lost to all IX	61872	1622.4

Potential Interfering Stations Included in above Scenario 1

10A MI ONONDAGA	BDTV	00000078	CP
11A IN LAFAYETTE	BMPCDT	20030116ABG	CP
11A MI ALPENA	BPCDT	19991101AHA	CP
11A WI GREEN BAY	BDTV	00000091	CP
11A WI MADISON	BPCDT	19991101AIM	CP
11A OH TOLEDO	USERRECORD01		APP

Percent new IX = 0.2271%

Worst case new IX 0.2217% Scenario 1

#####

Analysis of Interference to Affected Station 7

#### Analysis of current record

Channel	Call	City/State	Application	Ref. No.
11	WPCW	JEANETTE PA	BPCDT	-20060510AAI

#### Stations Potentially Affecting This Station

Chan	Call	City/State	Dist(km)	Status	Application	Ref. No.
10	WOIO	SHAKER HEIGHTS OH	195.1	LIC	BLCDT	-19991110AAR
10	WVFX	CLARKSBURG WV	130.5	CP MOD	BMPCDT	-20020930AAV
11	WBAL-TV	BALTIMORE MD	291.8	LIC	BLCDT	-20020422AAR
11	WBRE-TV	WILKES-BARRE PA	340.3	CP MOD	BMPCDT	-20000501ACL
11	WVPT	STAUNTON VA	250.9	LIC	BLEDT	-20021220ADX
12	WICU-TV	ERIE PA	186.7	CP	BDTV	-00000108
12	WBOYTV	CLARKSBURG WV	131.7	LIC	BLCT	-860107KG
12	WWPX	MARTINSBURG WV	179.5	LIC	BLCDT	-20021108AAX
11	WTOL	TOLEDO OH	333.5	APP	USERRECORD-01	

Total scenarios = 1

Result key: 4

Scenario 1 Affected station 7

#### Before Analysis

Results for: 11A PA JEANETTE BPCDT 20060510AAI CP

HAAT 303.0 m, ATV ERP 6.5 kW

	POPULATION	AREA (sq km)
within Noise Limited Contour	3115782	23926.6
not affected by terrain losses	2964364	21712.1

lost to NTSC IX	0	0.0
lost to additional IX by ATV	3421	64.2
lost to ATV IX only	3421	64.2
lost to all IX	3421	64.2

Potential Interfering Stations Included in above Scenario 1

10A WV CLARKSBURG	BMPCDT	20020930AAV	CP
11A MD BALTIMORE	BLCDT	20020422AAR	LIC
11A PA WILKES-BARRE	BMPCDT	20000501ACL	CP
11A VA STAUNTON	BLEDT	20021220ADX	LIC
12A WV CLARKSBURG	BLCT	860107KG	LIC

After Analysis

Results for: 11A PA JEANETTE BPCDT 20060510AAI CP  
HAAT 303.0 m, ATV ERP 6.5 kW

	POPULATION	AREA (sq km)
within Noise Limited Contour	3115782	23926.6
not affected by terrain losses	2964364	21712.1
lost to NTSC IX	0	0.0
lost to additional IX by ATV	4001	88.3
lost to ATV IX only	4001	88.3
lost to all IX	4001	88.3

Potential Interfering Stations Included in above Scenario 1

10A WV CLARKSBURG	BMPCDT	20020930AAV	CP
11A MD BALTIMORE	BLCDT	20020422AAR	LIC
11A PA WILKES-BARRE	BMPCDT	20000501ACL	CP
11A VA STAUNTON	BLEDT	20021220ADX	LIC
12A WV CLARKSBURG	BLCT	860107KG	LIC
11A OH TOLEDO	USERRECORD01		APP

Percent new IX = 0.4458%

Worst case new IX 0.4458% Scenario 1

#####

Analysis of Interference to Affected Station 8

Analysis of current record

Channel	Call	City/State	Application	Ref. No.
12	WINM	ANGOLA IN	BLCDT	-20021025AAN

Stations Potentially Affecting This Station

Chan	Call	City/State	Dist(km)	Status	Application	Ref. No.
11	WLFI-TV	LAFAYETTE IN	192.7	CP MOD	BMPCDT	-20030116ABG
11	WGVU-TV	GRAND RAPIDS MI	190.0	CP MOD	BMPEDT	-20031024AAN
12	WBBM-TV	CHICAGO IL	239.9	CP	BFRCCCT	-20050303AAG
12	WJRT-TV	FLINT MI	206.6	CP	BDTV	-00000104
12	WKRC-TV	CINCINNATI OH	261.1	CP	BDTV	-00000102
12	WMFD-TV	MANSFIELD OH	198.4	CP	BPCDT	-20040526ABT
12	WICU-TV	ERIE PA	403.5	CP	BDTV	-00000108
13	WTHR	INDIANAPOLIS IN	205.6	LIC	BLCT	-840626KE
13	WZZM-TV	GRAND RAPIDS MI	225.4	CP	BDTV	-00000124
13	WSYX	COLUMBUS OH	225.8	LIC	BLCDT	-20030801AXM
13	WTVG	TOLEDO OH	118.3	CP	BDTV	-00000114
11	WTOL	TOLEDO OH	120.8	APP	USERRECORD-01	

Total scenarios = 1

Result key: 5

Scenario 1 Affected station 8

Before Analysis

Results for: 12A IN ANGOLA BLCDT 20021025AAN LIC  
HAAT 132.0 m, ATV ERP 16.5 kW

	POPULATION	AREA (sq km)
within Noise Limited Contour	946777	19420.8
not affected by terrain losses	932700	19041.2



lost to NTSC IX	0	0.0
lost to additional IX by ATV	58138	1746.3
lost to ATV IX only	58138	1746.3
lost to all IX	58138	1746.3

Potential Interfering Stations Included in above Scenario 1

12A IL CHICAGO	BFRCT	20050303AAG	CP
12A MI FLINT	BDTV	00000104	CP
12A OH CINCINNATI	BDTV	00000102	CP
12A OH MANSFIELD	BPCDT	20040526ABT	CP
13A OH TOLEDO	BDTV	00000114	CP

After Analysis

Results for: 12A IN ANGOLA BLCDT 20021025AAN LIC  
HAAT 132.0 m, ATV ERP 16.5 kW

	POPULATION	AREA (sq km)
within Noise Limited Contour	946777	19420.8
not affected by terrain losses	932700	19041.2
lost to NTSC IX	0	0.0
lost to additional IX by ATV	58138	1746.3
lost to ATV IX only	58138	1746.3
lost to all IX	58138	1746.3

Potential Interfering Stations Included in above Scenario 1

12A IL CHICAGO	BFRCT	20050303AAG	CP
12A MI FLINT	BDTV	00000104	CP
12A OH CINCINNATI	BDTV	00000102	CP
12A OH MANSFIELD	BPCDT	20040526ABT	CP
13A OH TOLEDO	BDTV	00000114	CP
11A OH TOLEDO	USERRECORD01		APP

Percent new IX = 0.0000%

Worst case new IX 0.0000% Scenario 1

#####

Analysis of Interference to Affected Station 9

Analysis of current record

Channel	Call	City/State	Application	Ref. No.
12	WJRT-TV	FLINT MI	BDTV	-00000104

Stations Potentially Affecting This Station

Chan	Call	City/State	Dist(km)	Status	Application	Ref. No.
11	WBKB-TV	ALPENA MI	169.2	CP	BPCDT	-19991101AHA
11	WGVU-TV	GRAND RAPIDS MI	152.0	CP MOD	BMPEDT	-20031024AAN
12	WBBM-TV	CHICAGO IL	329.0	CP	BFRCT	-20050303AAG
12	WINM	ANGOLA IN	206.6	LIC	BLCDT	-20021025AAN
12	WMFD-TV	MANSFIELD OH	298.9	CP	BPCDT	-20040526ABT
12	WICU-TV	ERIE PA	355.8	CP	BDTV	-00000108
13	WZZM-TV	GRAND RAPIDS MI	150.2	CP	BDTV	-00000124
13	WTVG	TOLEDO OH	179.9	CP	BDTV	-00000114
11	WTOL	TOLEDO OH	181.8	APP	USERRECORD-01	

Proposal causes no interference

#####

Analysis of Interference to Affected Station 10

Analysis of current record

Channel	Call	City/State	Application	Ref. No.
12	WMFD-TV	MANSFIELD OH	BPCDT	-20040526ABT

Stations Potentially Affecting This Station

Chan	Call	City/State	Dist(km)	Status	Application	Ref. No.
12	WINM	ANGOLA IN	198.4	LIC	BLCDT	-20021025AAN
12	WYMT-TV	HAZARD KY	399.8	LIC	BLCDT	-20040109ACY
12	WJRT-TV	FLINT MI	298.9	CP	BDTV	-00000104
12	WKRC-TV	CINCINNATI OH	243.5	CP	BDTV	-00000102

12	WICU-TV	ERIE PA	261.4	CP	BDTV	-00000108
12	WBOYTV	CLARKSBURG WV	254.8	LIC	BLCT	-860107KG
12	WWPX	MARTINSBURG WV	413.3	LIC	BLCDDT	-20021108AAX
13	WSYX	COLUMBUS OH	98.0	LIC	BLCDDT	-20030801AXM
13	WTVG	TOLEDO OH	121.9	CP	BDTV	-00000114
13	WQED	PITTSBURGH PA	226.7	LIC	BLET	-335
11	WTOL	TOLEDO OH	119.4	APP	USERRECORD-01	

Total scenarios = 1

Result key: 6  
 Scenario 1 Affected station 10  
 Before Analysis

Results for: 12A OH MANSFIELD BPCDT 20040526ABT CP  
 HAAT 180.0 m, ATV ERP 14.0 kW

	POPULATION	AREA (sq km)
within Noise Limited Contour	1453340	21789.8
not affected by terrain losses	1263115	20764.4
lost to NTSC IX	0	0.0
lost to additional IX by ATV	153577	1279.6
lost to ATV IX only	153577	1279.6
lost to all IX	153577	1279.6

Potential Interfering Stations Included in above Scenario 1

12A IN ANGOLA	BLCDDT	20021025AAN	LIC
12A MI FLINT	BDTV	00000104	CP
12A OH CINCINNATI	BDTV	00000102	CP
12A PA ERIE	BDTV	00000108	CP
12A WV CLARKSBURG	BLCT	860107KG	LIC
13A OH COLUMBUS	BLCDDT	20030801AXM	LIC
13A OH TOLEDO	BDTV	00000114	CP

After Analysis

Results for: 12A OH MANSFIELD BPCDT 20040526ABT CP  
 HAAT 180.0 m, ATV ERP 14.0 kW

	POPULATION	AREA (sq km)
within Noise Limited Contour	1453340	21789.8
not affected by terrain losses	1263115	20764.4
lost to NTSC IX	0	0.0
lost to additional IX by ATV	153786	1287.7
lost to ATV IX only	153786	1287.7
lost to all IX	153786	1287.7

Potential Interfering Stations Included in above Scenario 1

12A IN ANGOLA	BLCDDT	20021025AAN	LIC
12A MI FLINT	BDTV	00000104	CP
12A OH CINCINNATI	BDTV	00000102	CP
12A PA ERIE	BDTV	00000108	CP
12A WV CLARKSBURG	BLCT	860107KG	LIC
13A OH COLUMBUS	BLCDDT	20030801AXM	LIC
13A OH TOLEDO	BDTV	00000114	CP
11A OH TOLEDO	USERRECORD01		APP

Percent new IX = 0.0188%  
 Worst case new IX 0.0188% Scenario 1

#####  
 Analysis of Interference to Affected Station 11

Analysis of current record

Channel	Call	City/State	Application Ref. No.
11	WTOL	TOLEDO OH	USERRECORD-01

Stations Potentially Affecting This Station

Chan	Call	City/State	Dist(km)	Status	Application Ref. No.
------	------	------------	----------	--------	----------------------

10	WILX-TV	ONONDAGA MI	130.4	CP	BDTV	-00000078
10	WOIO	SHAKER HEIGHTS OH	143.7	LIC	BLCDT	-19991110AAR
11	WLFJ-TV	LAFAYETTE IN	306.3	CP MOD	BMPCDT	-20030116ABG
11	WHAS-TV	LOUISVILLE KY	424.2	LIC	BLCDT	-20020503AAT
11	WBKB-TV	ALPENA MI	337.0	CP	BPCDT	-19991101AHA
11	WGVU-TV	GRAND RAPIDS MI	251.4	CP MOD	BMPEDT	-20031024AAN
11	WPCW	JEANETTE PA	333.5	CP	BPCDT	-20060510AAI
12	WINM	ANGOLA IN	120.8	LIC	BLCDT	-20021025AAN
12	WJRT-TV	FLINT MI	181.8	CP	BDTV	-00000104
12	WMFD-TV	MANSFIELD OH	119.4	CP	BPCDT	-20040526ABT

Total scenarios = 1

Result key: 7  
Scenario 1 Affected station 11  
Before Analysis

Results for: 11A OH TOLEDO USERRECORD01 APP

HAAT 304.0 m, ATV ERP 17.6 kW	POPULATION	AREA (sq km)
within Noise Limited Contour	2550163	25364.6
not affected by terrain losses	2549203	25356.5
lost to NTSC IX	0	0.0
lost to additional IX by ATV	16958	366.7
lost to ATV IX only	16958	366.7
lost to all IX	16958	366.7

Potential Interfering Stations Included in above Scenario 1

10A MI ONONDAGA	BDTV	00000078	CP
11A MI ALPENA	BPCDT	19991101AHA	CP
11A MI GRAND RAPIDS	BMPEDT	20031024AAN	CP
12A IN ANGOLA	BLCDT	20021025AAN	LIC
12A OH MANSFIELD	BPCDT	20040526ABT	CP

#####