



May 6, 2016

Mr. Tom Hodgkin  
Alexandra Communications  
45 S. Campbell Road  
Walla Walla, WA 99362

Dear Mr. Hodgkin:

On the Fifth of May, 2016, assisted by my survey crew, we worked at your tower site for KQFO-FM on the Jump Off Joe site.

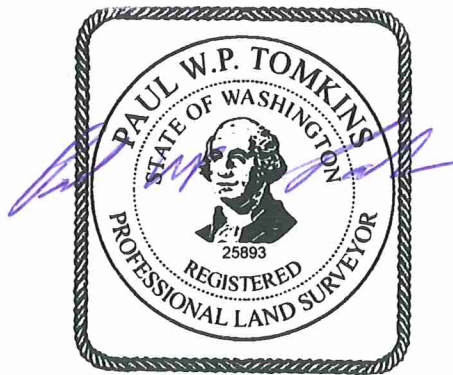
Using Trimble GPS receivers and a Trimble total station capable of reflector-less measurements, we made a series of direct measurements to the antenna. We provided direction to the gentleman working on the tower, who rotated the antenna itself until we were able to confirm that the direction of the antenna was within 0°03' of an azimuth of 345°.

I trust that this letter is satisfactory for your complete application.

Sincerely,

HDJ- A Division of PBS.

By: Paul W.P. Tomkins, PLS  
Eastern Washington Survey Manager



MAY 09, 2016

5 North Colville Street, Suite 200, Walla Walla, WA 97239  
509.956.3026 Main  
509.547.5129 Fax  
www.hdjdg.com | www.pbsew.com

Bend | Boise | Coos Bay | Eugene | Portland | Seattle | Tri-Cities | Vancouver | Walla Walla