

EXHIBIT 13

Waiver Request of Section 74.1204

Westwood, CA K212DK 10 watts ERP

Minor Change in Directional Antenna

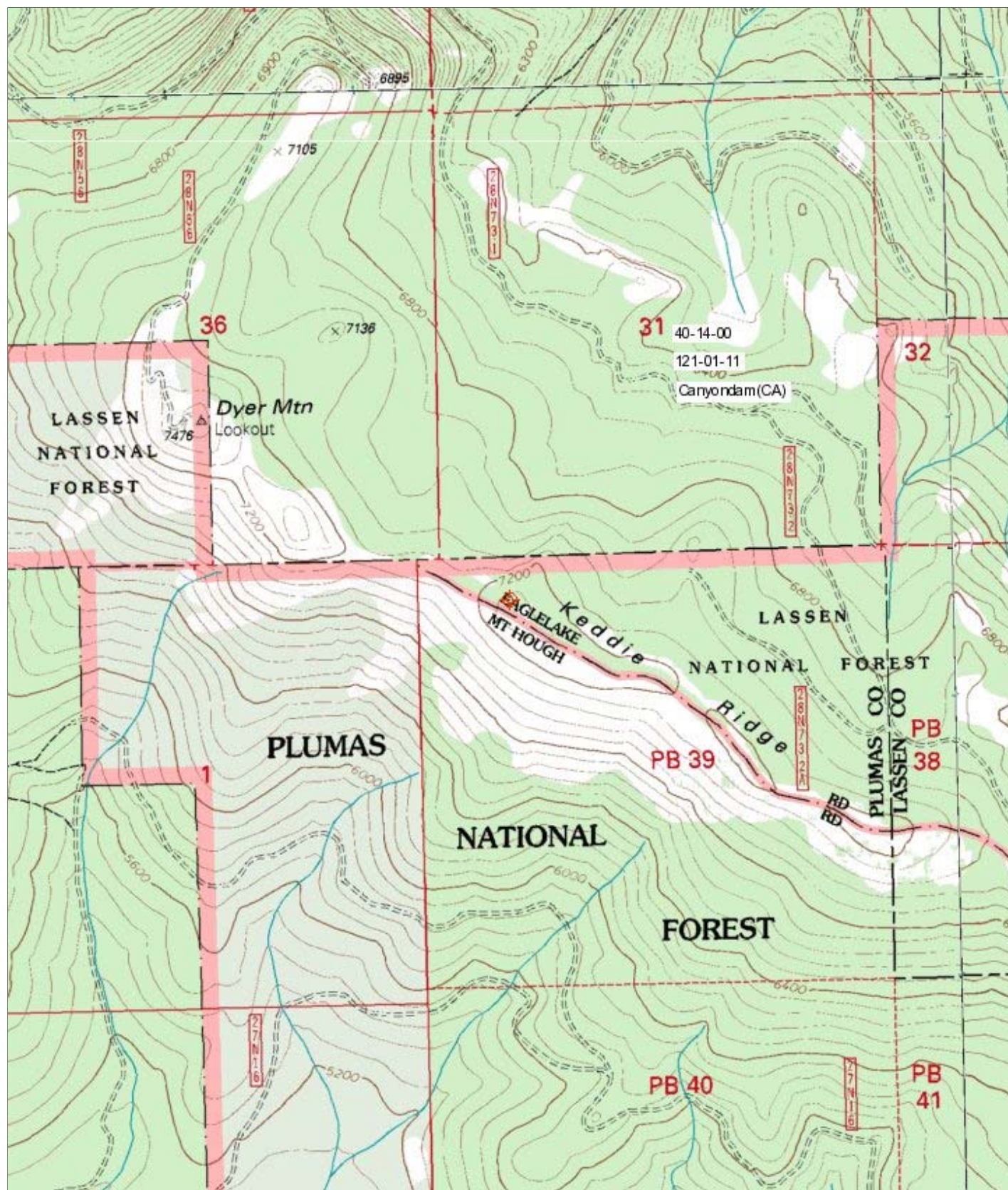
Calvary Chapel of Twin Falls, Inc. 1/31/2011

The proposed site is contained inside the service contour of third-adjacent FM Translator K209AY Chester, CA

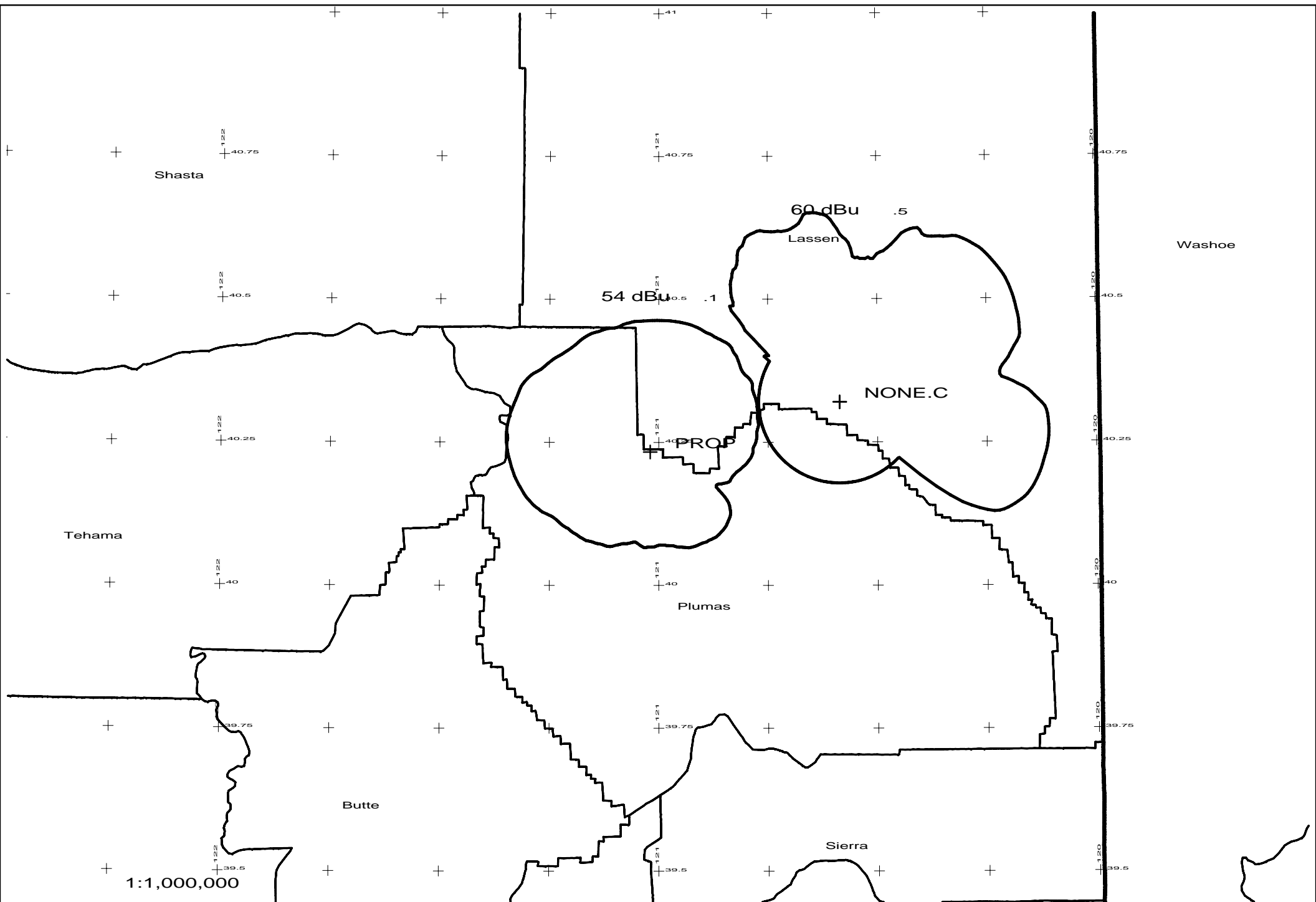
NOTE: The Antenna will not be changed, only the direction slightly skewed. Presently the antenna, a Telewave ANT90 Directional is at 0 degrees and is causing prohibited contour overlap to a NEW CP – 211A Susanville. This proposal will eliminate that prohibited overlap with a direction change to 340 degrees. The coax will not be modified.

K209AY

The proposed site is contained entirely inside the service contour of the third -adjacent K209AY, 209D, .009kW, Chester, CA. The level of least arriving protected F(50,50) signal at the proposed transmitter site 84.7-dBu. Using the Undesired-to-Desired method for calculating proposed interference, the interfering contour is 124.7-dBu (free-space contour method employed). The interfering signal would, in the worst case at the maximum radial, extend 13 meters from the center of radiation, which will remain at 24 meters AGL. This interference contour does not touch the ground. This communications tower is located on Keddie Ridge and a portion of the USGS TOPO map Canyon Dam (CA) is attached showing this is not a populated area. Because there are no residences, businesses or major roadways located within this interference contour, Calvary Chapel of Twin Falls, Inc. respectfully requests a waiver of the FM translator contour overlap regulations with respect to third-adjacent FM Translator K209AY Chester.



0 0.5 Mi
0 2000 Ft



OP

