

Minor Amendment of Transmitter Location

BPH-20140804ADC; WWBB Facility ID No.: 54568

August 2014

This application seeks to amend BPH-20140804ADC, which is one of three applications of a coordinated contingent group of minor change applications involving stations WCIB, Falmouth, MA, Facility ID 2683, WBWL, Lynn, MA, Facility ID 40824, and WWBB, Providence, RI, Facility ID 54568. By this application, WWBB seeks to specify a new transmitter location, utilizing an existing tower on the roof of the “One Financial Plaza” building in Providence, Rhode Island.

The station will downgrade channel class from B to A, change transmitter location, specify use of a directional antenna, and specify use of Section 73.215, to accommodate a facilities modification by WBWL.

Presently WWBB as a Class B facility is short spaced with WBWL Class A pursuant to Section 73.213(a); a short spacing which has been continuous since prior to November 1964. This coordinated contingent group of minor change applications will eliminate that short spacing.

Attached as **Figure 1** is a spacing study conducted at the proposed Class A, WWBB antenna location¹, which includes all known facilities, applications and allocations, as well as the planned modified facilities of WBWL and WCIB. This Figure confirms that the WWBB antenna location will be fully spaced in accordance with Section 73.207 with all known facilities, except with the licensed and contingent modified facilities of WBWL. Section 73.215 compliance with these facilities will be demonstrated. Attached as **Figure 2** is the proposed antenna directional pattern, which was used to produce **Figure 3**, a map of predicted principal community signal, demonstrating that the entire WWBB principal community will receive the required level of signal.

As the proposed WWBB facility is short of the required Section 73.207 spacing distance to the proposed licensed and the contingent WBWL Class A non-directional facility, which will itself use Section 73.215, it is proposed to use Section 73.215 for this proposed WWBB Class A facility to demonstrate compliance with regard to WBWL. As shown in **Figure 4**, no prohibited contour overlap is predicted to be created by this proposal.

The proposed facilities were evaluated in terms of potential radio frequency radiation exposure at ground level in accordance with OET Bulletin No. 65, “Evaluating Compliance With FCC-Specified Guidelines for Human Exposure to Radio frequency Radiation.”

The proposed 1-bay antenna system is to be mounted 129.53 meters above ground, 6.4 meters above the building rooftop, which is a controlled work location. The licensee will take power density measurements and make any needed changes to access procedures and marking of the rooftop prior to filing of an application for license to be in compliance with 73 CFR 1.1306.

¹

41-49-30.4 N 71-24-38.0 W (NAD 27), an existing tower with no registration required on the roof of One Financial Plaza, Providence, Rhode Island

Figure 1. WWBB Proposed Antenna Location Spacing Study

```

                                WWBB at 1-FC  8-19-2014

REFERENCE                      DISPLAY DATES
41 49 30.4 N.                  CLASS = A  Int = A  DATA  08-19-14
71 24 38.0 W.                  Current Spacings to 3rd Adj.  SEARCH 08-19-14
----- Channel 268 - 101.5 MHz -----

Call      Channel  Location      Azi    Dist    FCC    Margin
-----
WWBB      APP-Z 268A  Providence  RI  126.8    8.15  115.0  -106.9
WBWL      LIC-Z 269A  Lynn        MA   26.3   65.45  72.0   -6.6
WBWL      APP-N 269A  Lynn        MA   26.3   65.45  72.0   -6.6
WCIB      APP-Z 270B  Falmouth    MA  113.4   73.98  69.0    5.0
WCIB      LIC  270B  Falmouth    MA  113.4   73.98  69.0    5.0
WJHD      LIC  214A  Portsmouth  RI  155.2   27.35  10.0   17.4
Horizontally Polarized only
WKCI-FM   LIC-N 267B  Hamden      CT  251.7  135.12  113.0   22.1
WPDH      LIC  268B  Poughkeepsie NY  267.7  215.32  178.0   37.3
WRSY      LIC-N 268A  Marlboro    VT  317.7  154.73  115.0   39.7
WBUR-FM   LIC-D 215B  Boston      MA   15.9   55.75  15.0   40.8
WAQY      LIC  271B  Springfield MA  285.5  111.04  69.0   42.0
WKNL      LIC-Z 265A  New London  CT  235.1   74.36  31.0   43.4
WHYA      LIC-N 266A  Mashpee     MA   99.4   89.74  31.0   58.7
WGIR-FM   LIC  266B  Manchester  NH  353.6  129.30  69.0   60.3
WCNI      LIC  215A  New London  CT  229.8   76.20  10.0   66.2
WBEA      LIC  269A  Southold    NY  222.9  144.20  72.0   72.2
-----

```

Figure 2. WWBB Directional Antenna Pattern

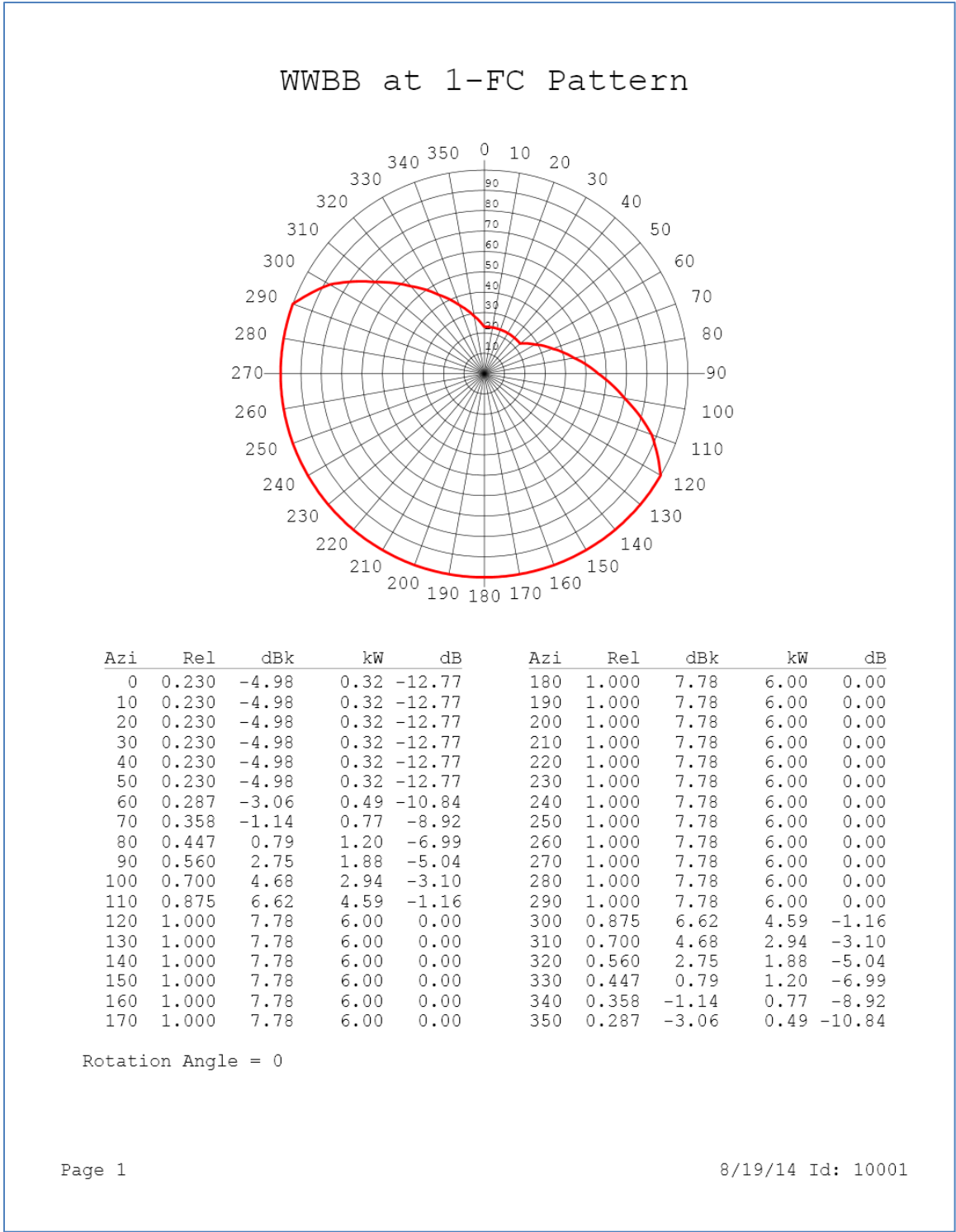


Figure 3. Map of Principal Community Coverage

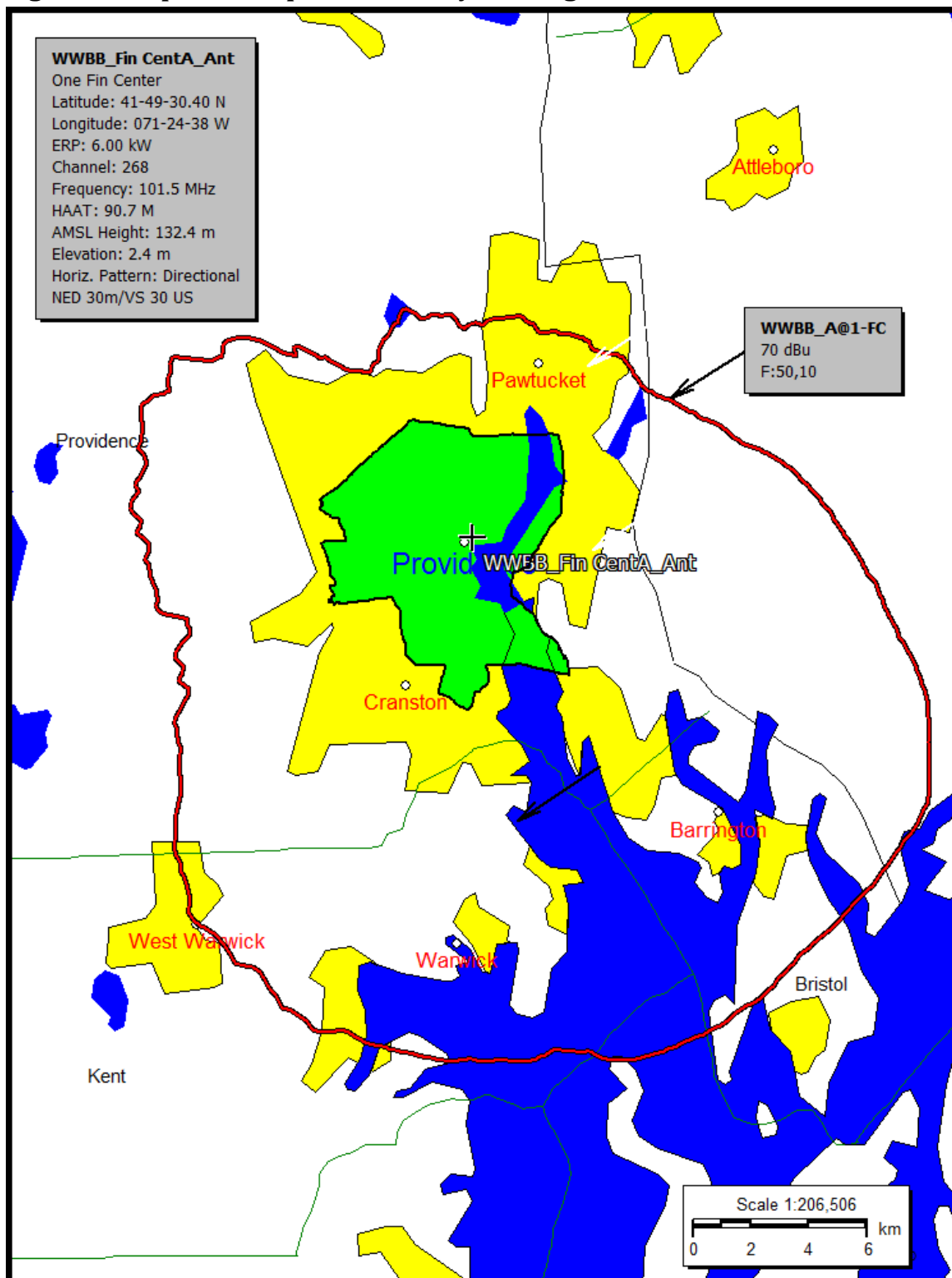


Figure 4. Map of Predicted WBWL and WWBB Protected and Interfering Contours

