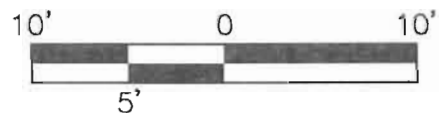
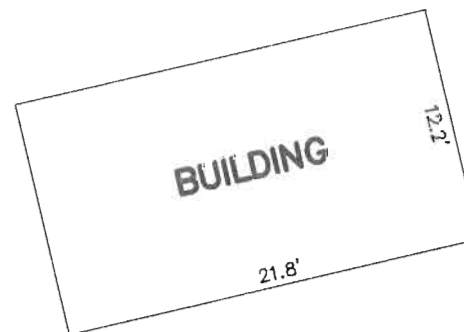


SCALE: 1" = 10'

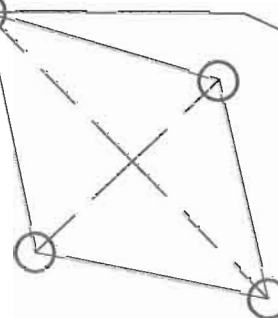


Azimuth 300° 00' 00" (184'±)
TO SET #5 REBAR FOR
REFERENCE POINT



WYOMING PUBLIC RADIO ANTENNA
LOCATED ON THIS LEG OF THE TOWER

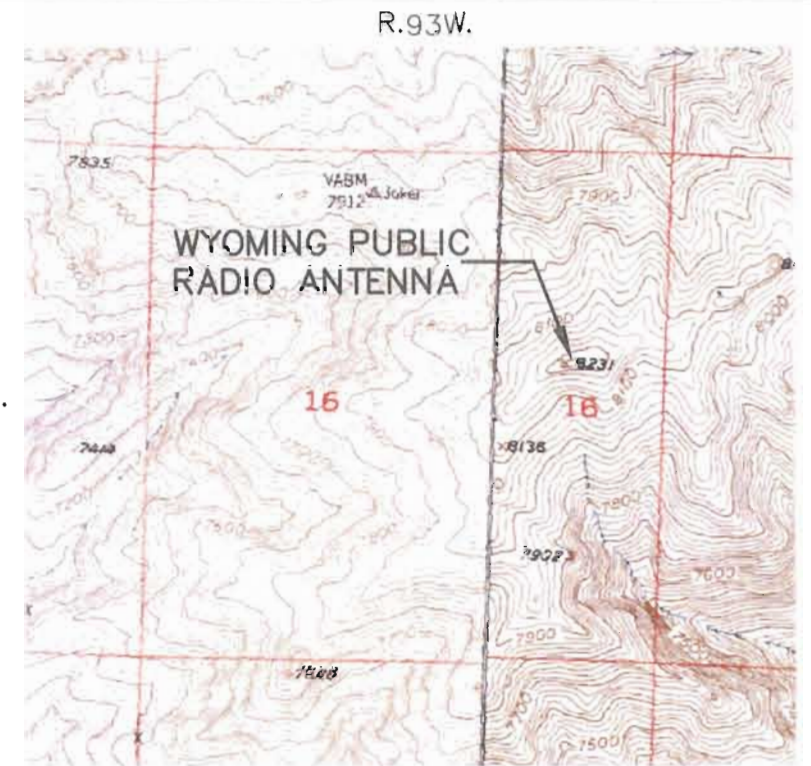
GROUND DATA FOR ANTENNA
LAT 43°26'15.4"N
LONG 107°59'50.9"W
NAD 1983
ELEVATION 8220 NAVD 88
(GEOID 99)



COPPER
MOUNTAIN
TOWER

N65°19'44"W 1010.41'

EAST 1/4 CORNER
SEC. 16, T.40N., R.93W.,
8TH PRINCIPAL MERIDIAN
FOUND STONE



LOCATION MAP
SCALE: 1" = 2000'

SURVEYOR'S STATEMENT

I, RANDALL S. STELZNER, PROFESSIONAL LAND SURVEYOR
OF THE STATE OF WYOMING, DO HEREBY STATE THAT THE
ANTENNA LOCATION SHOWN HEREON WAS SURVEYED BY
ME ON DECEMBER 22, 2006, AND THAT THE
ACCOMPANYING MAP IS CORRECT TO THE BEST OF MY
KNOWLEDGE.



NOTE:
GEODETIC POSITION DETERMINED FROM NATIONAL
GEODETIC SURVEY OPUS SOLUTION USING CORS
DATA FROM BASE STATIONS AT DRIGGS, ID,
CASPER, WY, AND MEDICINE BOW, WY.

SCALE: HOR: 1" = 10' VERT: 1" = 10'
DRN: LCB BK: 905 JOB NO. 12875 RS
CHK: RSS PAGE: 53+ DATE: 03-21-07



124 East Main Street
Riverton, WY 82501
307-856-8136

1120 East C Street
Casper, WY 82501
307-577-0806

350 Parsley Boulevard
Cheyenne, WY 82007
307-635-6827

428 Alan Road
Powell, WY 82435
307-754-7170

520 Wilkes Drive, Suite 13
Green River, WY 82935
307-875-4394

INBERG-MILLER ENGINEERS

COPPER MOUNTAIN ANTENNA
SECTION 16, T.40N., R.93W

WYOMING PUBLIC RADIO

SHEET
1 OF
1

Any use, reuse, or CAD adaptation of this drawing other than for the specific purpose intended, by anyone, without written authorization from the engineer, will be at the Client's risk and full legal responsibility.

FILE: 12875-RS.DWG