

Three Angels Broadcasting Network
Dan Peek—Engineer
P.O. Box 220
West Frankfort, Illinois 62896

August 19, 2009

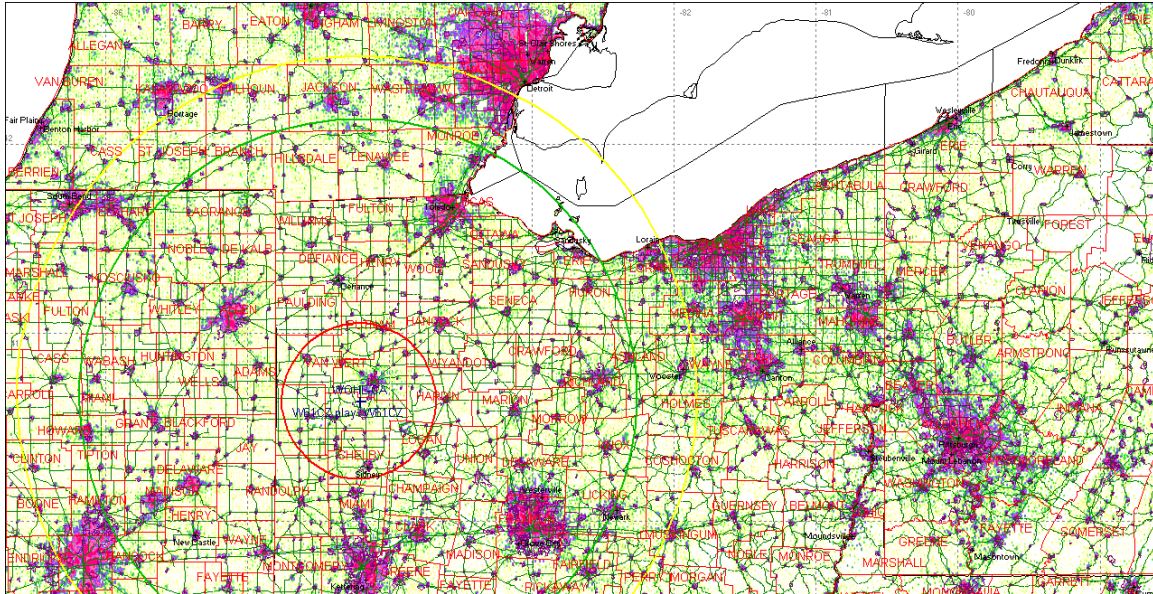
In evaluating the proposed digital flash cut for W23DE-D FID 74373, an outgoing interference study was executed on the proposed design in the attached application using the OET-69 Longley Rice methodology. The stations listed in the table below showed possible interference. When these stations were evaluated for outgoing interference, there was zero percent interference present found in each case when rounded to the nearest whole percent.

Three Angels Broadcasting Network also requests that the commission grant an STA to operate at 1.85kW ERP while international coordination is being completed with Canada since the proposed 19dBu F(50,10) contour at 7.85kW ERP crosses into Canadian territory.

Callsign	Fac ID	ARN	City	Class	Overlap Pop%
WTLW	1222	BDSTA20081021AAZ	LIMA	DTV STA	0.00%
WTLW-DT	1222	BMPCDT20080616ABV	LIMA	DTV	0.03%
W47AB	50138	BDISDTT20090716ABH	MANSFIELD	LP DTV	0.45%
WOCB-LP	9939	BLTTA20031212AAO	MARION	A NTSC	0.00%
W45AG	67485	BLTTL19900727IO	FORT WAYNE	A NTSC	0.00%
WXCB-CA	59852	BDFCDTA20080804AAX	DELAWARE	A DTV	0.00%
WXCB-CA	59852	BLDTA20090511AQS	DELAWARE	A DTV	0.00%
WRCX-LP	69535	BLTTL20090223AAQ	DAYTON	LP NTSC	0.00%
WIWU-CA	29292	BLTTA20080422AAS	MARION	A NTSC	0.00%
WTVS	16817	BLEDT20001117ABV	DETROIT	DTV	0.01%
WTVS-DT	16817	BPEDT20080620AAL	DETROIT	DTV	0.00%

The attached page identifies the considered list of stations when the outgoing interference analysis was executed.

Red contour is the proposed protected coverage. Green is the 19dBu F(50,10) contour at 1.85kW ERP shown not crossing into Canadian territory. Yellow is the 19dBu F(50,10) contour at 7.85kW ERP shown crossing into Canadian territory and thus requiring international coordination.



STATIONS CONSIDERED IN THE OUTGOING INTERFERENCE STUDY

Callsign	Fac ID	ARN	City	Class
WTLW	1222	BDSTA20081021AAZ	LIMA	DTV STA
WTLW-DT	1222	BMPCDT20080616ABV	LIMA	DTV
W47AB	50138	BDISDTT20090716ABH	MANSFIELD	LP DTV
WOCB-LP	9939	BLTTA20031212AAO	MARION	A NTSC
W45AG	67485	BLTTL19900727IO	FORT WAYNE	A NTSC
WXCB-CA	59852	BDFCDTA20080804AAX	DELAWARE	A DTV
WXCB-CA	59852	BLDTA20090511AQS	DELAWARE	A DTV
WRCX-LP	69535	BLTTL20090223AAQ	DAYTON	LP NTSC
WIWU-CA	29292	BLTTA20080422AAS	MARION	A NTSC
WTVS	16817	BLEDT20001117ABV	DETROIT	DTV
WTVS-DT	16817	BPEDT20080620AAL	DETROIT	DTV
WOHZ-LP	41892	BLTTL19920903IB	MANSFIELD	LP NTSC
W43BZ	49182	BLTTL20031121AOO	COLUMBUS	LP NTSC
WPBO-DT	66190	BLEDT20040323ATV	PORTSMOUTH	DTV
WGGN-DT	11027	BMDSTA20040826AFD	SANDUSKY	DTV STA
	50138		MANSFIELD	NTSC ALLOT
W47AB	50138	BLTT20060403BEH	MANSFIELD	LP NTSC
WGGN-TV	11027	BDSTA20080317AES	SANDUSKY	DTV STA
WGGN-DT	11027	BMPCDT20081024AER	SANDUSKY	DTV
W41AP	55669	BLTTL19891227IS	SANDUSKY	LP NTSC
W61DE	68075	BLTT20060105ABA	CINCINNATI	LP NTSC
WKGK-LP	34895	BLTTA20041122AIH	KOKOMO	A NTSC
WXCB-LP	59852	BLTTA20030402AAU	DELAWARE	A NTSC
WXCB-CA	59852	BSTA20080604ADF	DELAWARE	A NTSC
WLWT*	46979	DTV ALLOTMENT	CINCINNATI	NTSC AUX
WDTI	7908	BPEDT20080617AEQ	INDIANAPOLIS	DTV
WDTI-DT	7908	BLEDT20080519ABT	INDIANAPOLIS	DTV
WALV-CA	70161	BDISTTA20081208AAT	INDIANAPOLIS	A NTSC
WALV-CA	70161	BLTTA20020621AAJ	INDIANAPOLIS	A NTSC
WALV-CA	70161	BDISTTA20080804AFE	INDIANAPOLIS	A NTSC
WTBU-DT	7908	BDSTA20040616AEP	INDIANAPOLIS	DTV STA
W51BU	65121	BLTTL19970918JR	INDIANAPOLIS	LP NTSC
W47AZ	70416	BLTTL20000211AAQ	INDIANAPOLIS	A NTSC
WNDU-DT	41674	BLCDT20060717AAG	SOUTH BEND	DTV
WNDU-TV	41674	BPCDT20080619AAB	SOUTH BEND	DTV
WBND-LP	71431	BLTTL20021010AAQ	SOUTH BEND	LP NTSC
WCLJ-TV	68007	BDSTA20090312ABF	BLOOMINGTON	DTV STA
WCLJ-DT	68007	BPCDT20080618ATP	BLOOMINGTON	DTV
W43BV	68035	BDFCDTT20060313AAJ	TERRE HAUTE	LP DTV
WWJ-DT	72123	BLCDT19990720LH	DETROIT	DTV
WWJ-DT	72123	BMPCDT20080616ABD	DETROIT	DTV
WNDU-TV*	41674	DTV ALLOTMENT	SOUTH BEND	NTSC AUX
WXOX-LP	6699	BDFCDTL20080221ACU	CLEVELAND	LP DTV
WCPX-DT	10981	BLCDT20010226ABH	CHICAGO	DTV

WAJN-LP	130857	BMPTTL20070314ABO	LAFAYETTE	LP NTSC
WCPX	10981	BPCDT20080619AIL	CHICAGO	DTV
WAJN-LP	130857	BLTTL20050422AEH	BROOKSTON	LP NTSC
WPGH-DT	73875	BLCDT20021216AAT	PITTSBURGH	DTV
WPGH-DT	73875	BMPCDT20021216AAS	PITTSBURGH	DTV
WKZT-DT	34181	BLEDT20011221ABK	ELIZABETHTOWN	DTV
WLEP-LD	168177	BMPDTL20090805ACG	ERIE	LP DTV
NEW	168177	BDCCDTL20061024AER	ERIE	LP DTV
W65BK	68035	BLTT20010713AAI	TERRE HAUTE	LP NTSC
WVVA	74176	BDRTCDT20090707AEU	BECKLEY	LP DTV