

EXHIBIT 12

Waiver Request of Section 74.1204

K275AL Denham Springs, LA 38 Watts ERP

Minor Site Change

Calvary Chapel of Twin Falls, Inc. November 2008

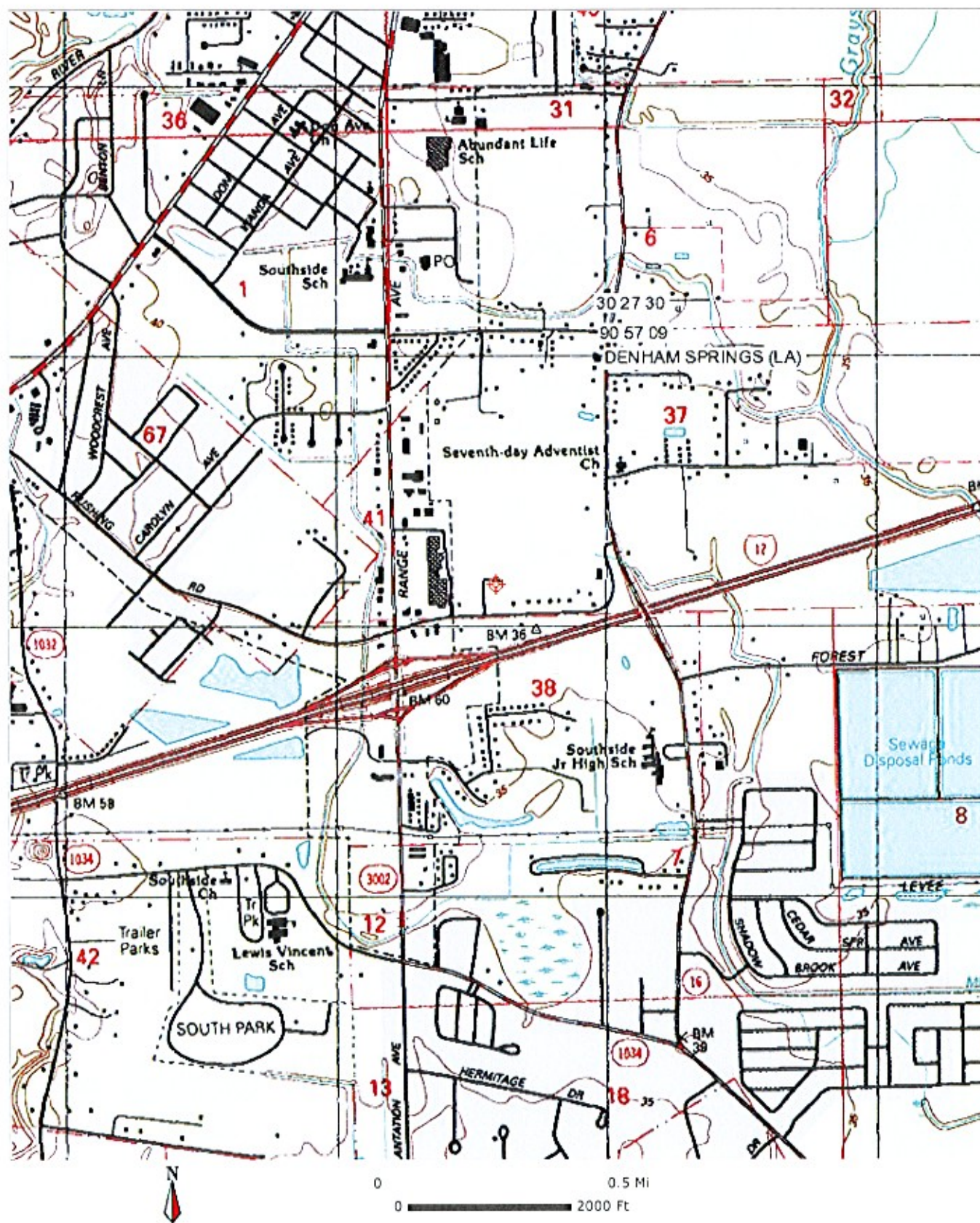
The proposed site is contained entirely inside the service contour of second-adjacent stations WFMF Baton Rouge, LA and WCDV Hammond, LA

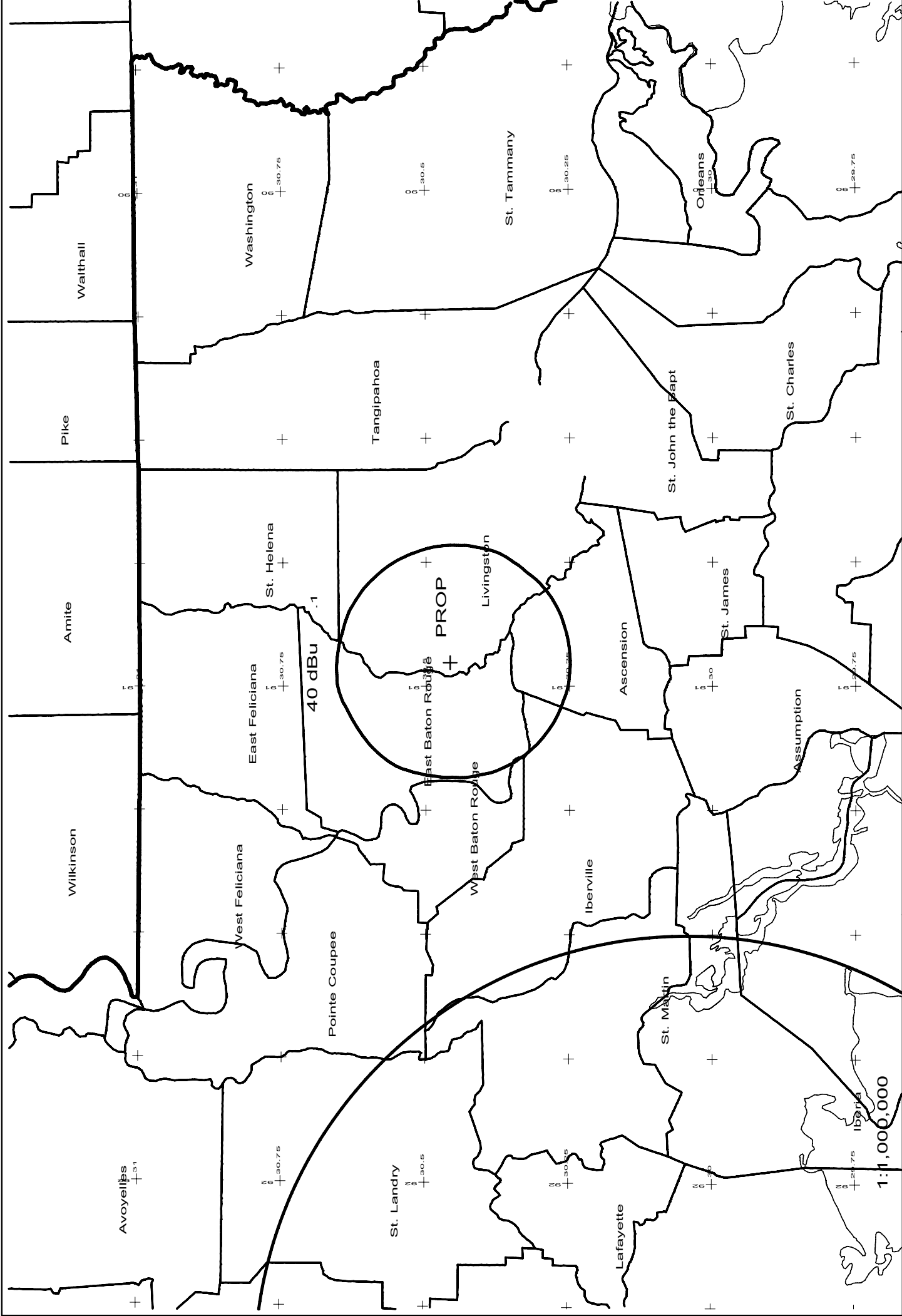
WFMF

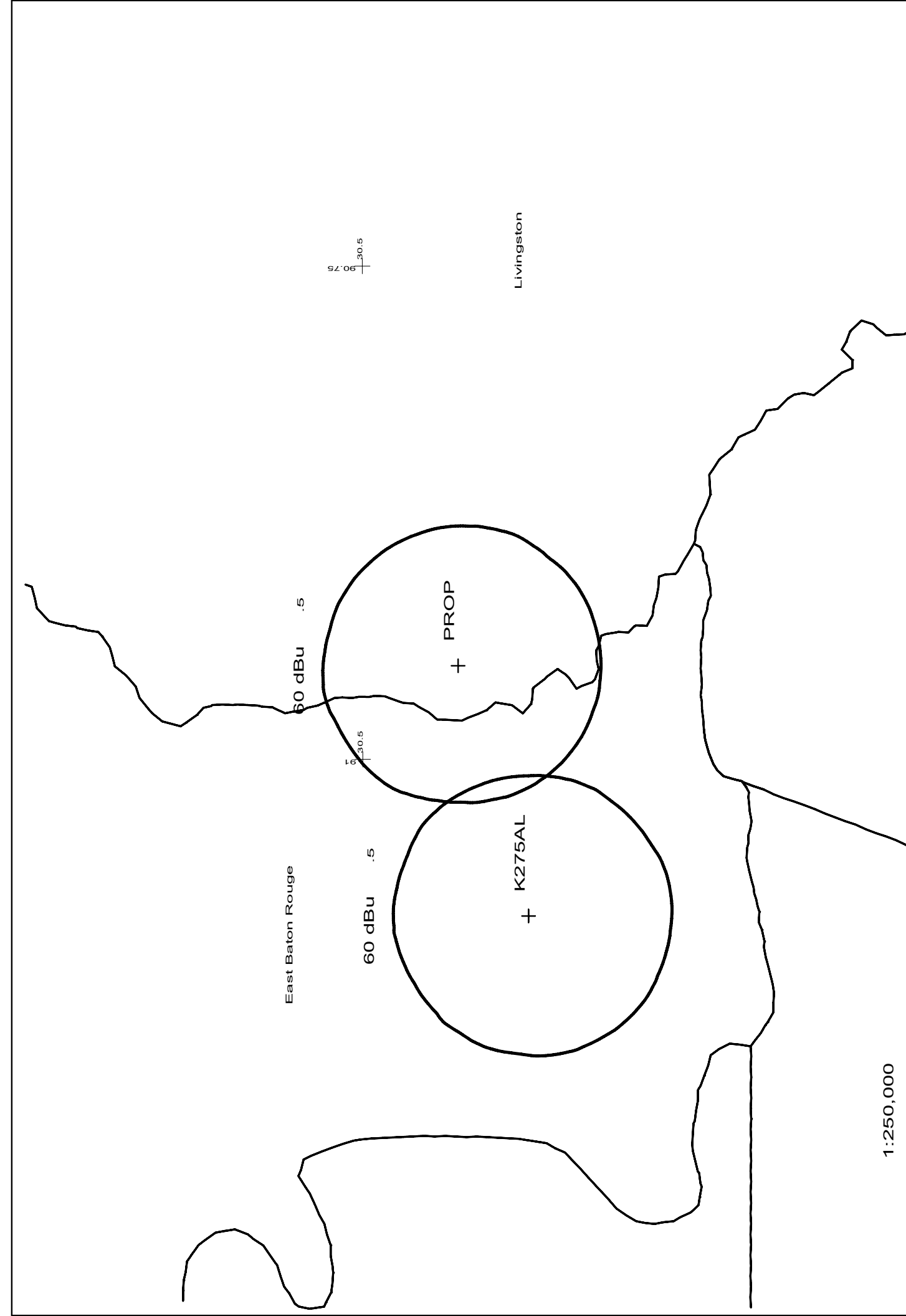
The proposed site is contained entirely inside the service contour of second-adjacent station WFMF, 273C, 100kW, Baton Rouge, LA. The level of least arriving protected F(50,50) signal at the proposed transmitter site is 82-dBu. Using the Undesired-to-Desired method for calculating proposed interference, the interfering contour with respect to WFMF is 122-dBu (free-space contour method employed). The interfering contour would, in the worst case at the maximum radial, extend 35 meters from the center of radiation, which is proposed at 70 meters AGL. This interference contour does not touch the ground. This tower is located in a sparsely populated area and attached is a section of the USGS Denham Springs (LA) Quadrangle. Because there are no residences, businesses or major roads that are located within the interfering contour or close enough to puncture the interfering contour, Calvary Chapel of Twin Falls, Inc. respectfully requests a waiver of the FM translator contour overlap regulations with respect to second-adjacent channel station WFMF, Baton Rouge, LA.

WCDV

The proposed site is contained entirely inside the service contour of second-adjacent station WCDV, 277C, 100kW, Hammond, LA. The level of least arriving protected F(50,50) signal at the proposed transmitter site is 97-dBu. Using the Undesired-to-Desired method for calculating proposed interference, the interfering contour with respect to WCDV is 137-dBu (free-space contour method employed). The interfering contour would, in the worst case at the maximum radial, extend 6 meters from the center of radiation, which is proposed at 70 meters AGL. This interference contour does not touch the ground. This tower is located in a sparsely populated area and attached is a section of the USGS Denham Springs (LA) Quadrangle. Because there are no residences, businesses or major roads that are located within the interfering contour or close enough to puncture the interfering contour, Calvary Chapel of Twin Falls, Inc. respectfully requests a waiver of the FM translator contour overlap regulations with respect to second-adjacent channel station WCDV Hammond, LA.







<p>PROP 275D .038kW 81M AMSL</p> <p>N. Lat. 30 27 30 W. Lng. 90 57 09</p>	<p>Minor Change</p> <p>CCTF - 11/08</p>
---	---

Contour.out

TERRAIN AND CONTOUR DATA
K275AL DENHAM SPRINGS, LA MINOR SITE CHANGE
NOVEMBER 2008
CALVARY CHAPEL OF TWIN FALLS, INC.

N. Lat. = 302730.0 W. Lng. = 905709.0
HAAT and Distance to Contour - FCC Method - USGS 03 SEC

Azi.	AV EL	HAAT	ERP kw	dBk	Field	60-F5
000	14.4	66.6	0.0380	-14.20	1.000	6.56
030	14.7	66.3	0.0380	-14.20	1.000	6.55
060	12.5	68.5	0.0380	-14.20	1.000	6.65
090	9.4	71.6	0.0380	-14.20	1.000	6.80
120	7.2	73.8	0.0380	-14.20	1.000	6.90
150	5.9	75.1	0.0380	-14.20	1.000	6.96
180	6.0	75.0	0.0380	-14.20	1.000	6.95
210	6.6	74.4	0.0380	-14.20	1.000	6.93
240	8.6	72.4	0.0380	-14.20	1.000	6.84
270	12.9	68.1	0.0380	-14.20	1.000	6.63
300	10.6	70.4	0.0380	-14.20	1.000	6.75
330	14.7	66.3	0.0380	-14.20	1.000	6.55

Ave EL= 10.29 M HAAT= 70.71 M AMSL= 81 M