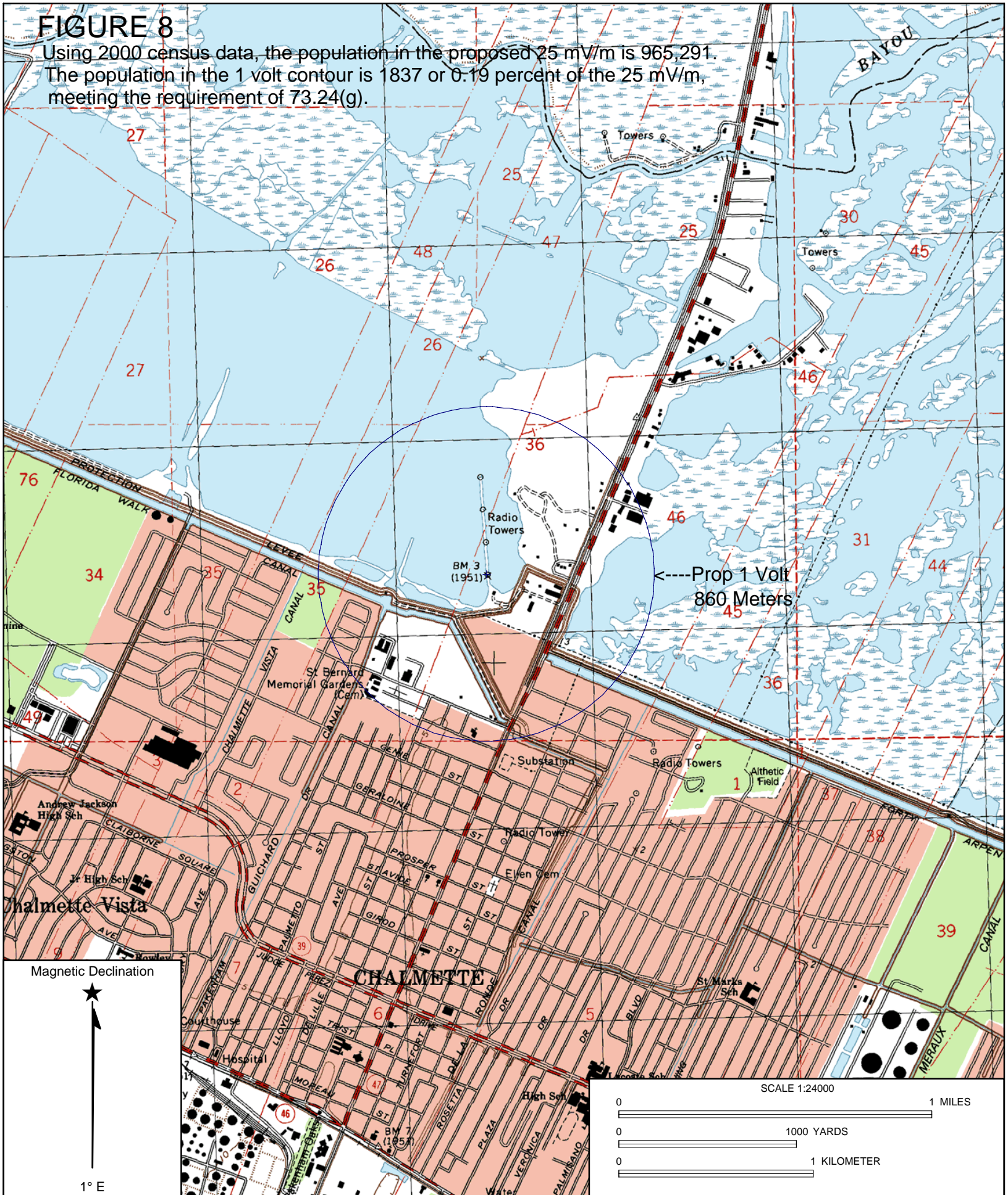


# FIGURE 8

Using 2000 census data, the population in the proposed 25 mV/m is 965,291.  
The population in the 1 volt contour is 1837 or 0.19 percent of the 25 mV/m,  
meeting the requirement of 73.24(g).



Name: CHALMETTE  
Date: 1/31/2010  
Scale: 1 inch equals 2000 feet

Location: 029° 57' 39.78" N 089° 57' 27.93" W NAD27  
Caption: The proposed 1 volt contour and daytime tower at 29-57-44 North and 89-57-31 West.



FIGURE 9

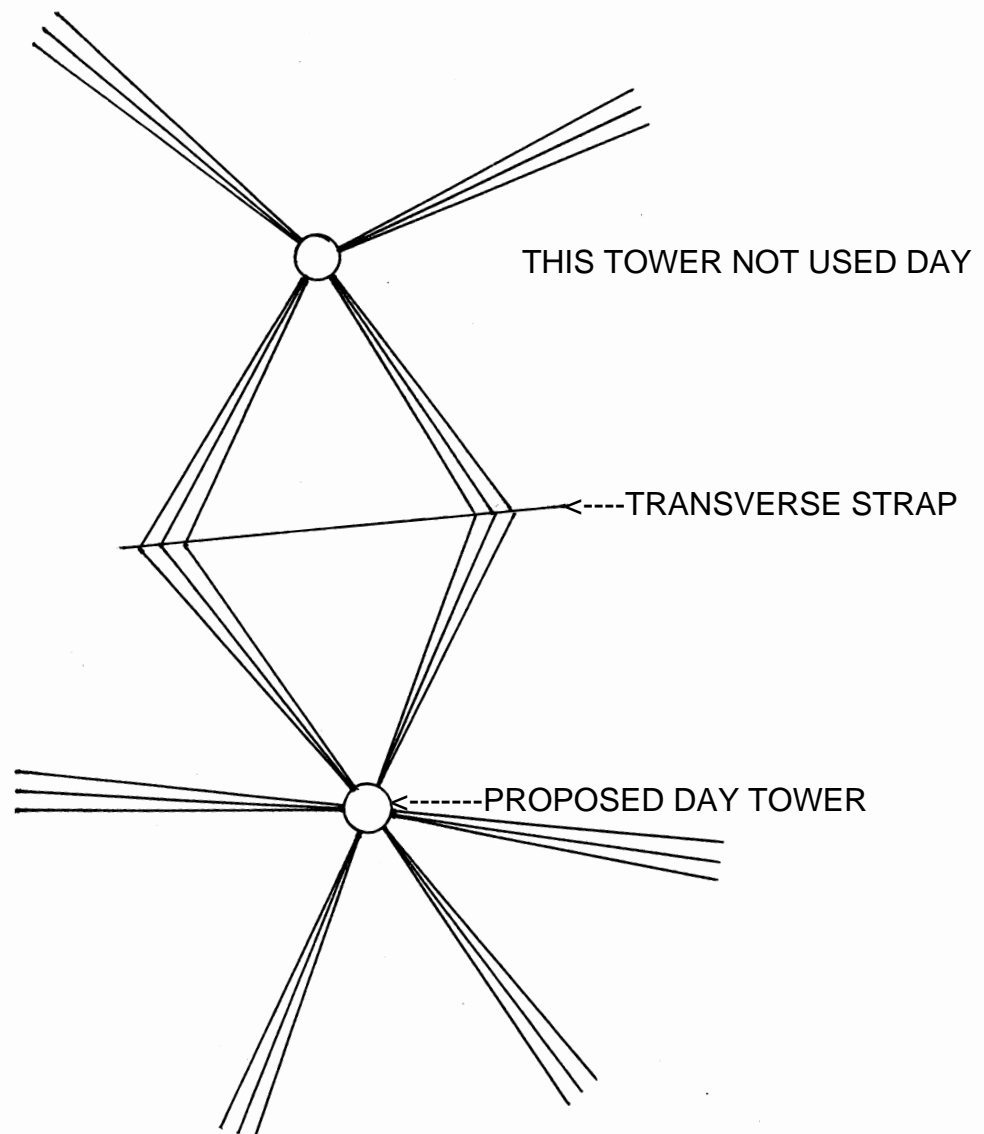


Name: CHALMETTE NW, LA  
Date: 1/31/2010  
Scale: 1 inch equals 1000 feet

Location: 029° 57' 44.88" N 089° 57' 28.94" W NAD27  
Caption: The proposed 1 volt contour and daytime tower at 29-57-44 North and 89-57-31 West.

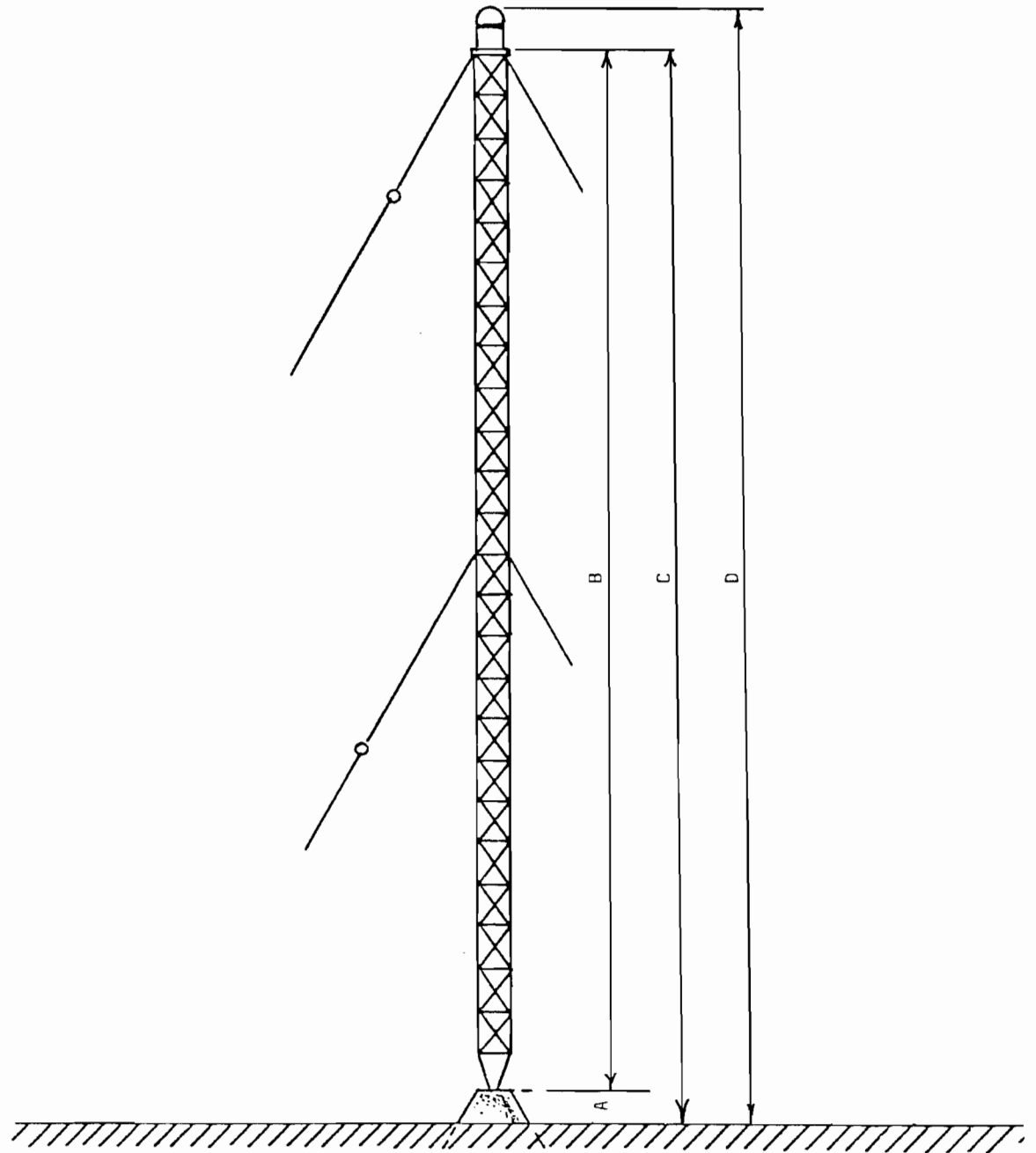
## FIGURE 10

### WIST(AM) GROUND SYSTEM



The system consists of 120 #10 soft-drawn copper wires evenly spaced 108 meters long except where truncated in a transverse strap.

# WIST, NEW ORLEANS, LA



DIMENSION	DESCRIPTION	TOWER				
		1	2	3	4	5
A	FOUNDATION	1.2	1.2			
B	TOWER STEEL	69.5	69.5			
C	TOTAL LESS BEACON	70.7	70.7			
D	TOTAL WITH BEACON	71.6	71.6			

Drawing is not to scale.  
Towers will be self-supporting.