

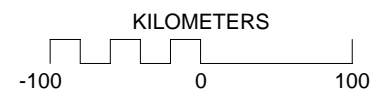
AMW™: WPBSCOH.am

#### Sites

Call sign: WPBS Power: 50.000 kW  
Pattern: ND-D Frequency: 1040 kHz  
Coordinates: N33°40'48.00" W84°01'44.00"

Call sign: WSGH Power: 9.100 kW  
Pattern: DA-U Frequency: 1040 kHz  
Coordinates: N36°08'06.00" W80°30'14.00"

Call sign: WQBB Power: 10.000 kW  
Pattern: ND-D Frequency: 1040 kHz  
Coordinates: N36°02'34.00" W84°02'51.00"



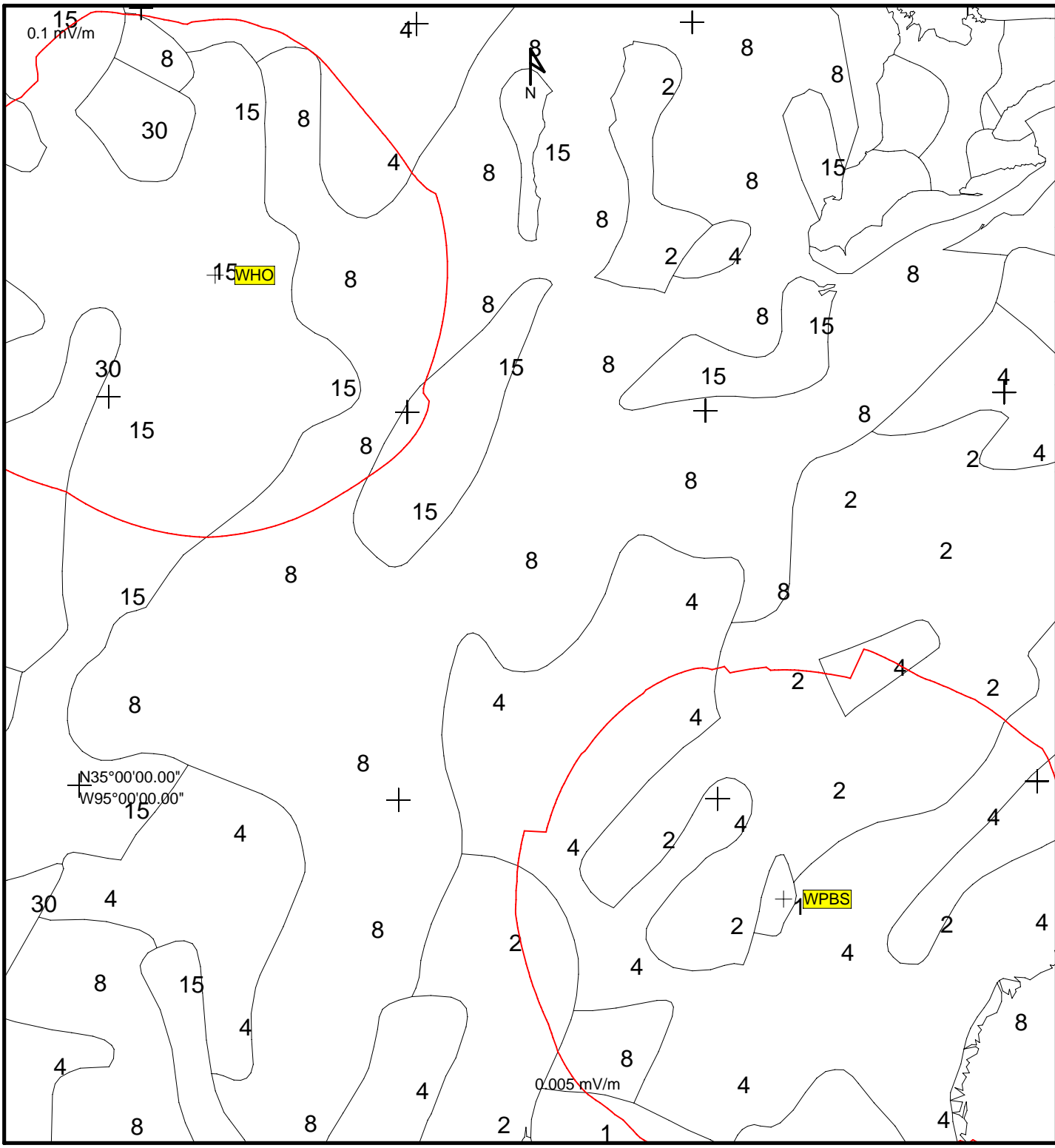
### FIGURE 1

COCHANNEL ALLOCATION STUDY

Scale

1:5,000,000

N30°00'00.00"  
W86°00'00.00"



AMW™: WPBS\_WHO.am

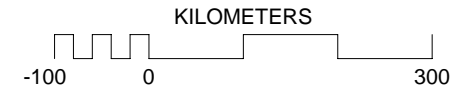
Sites

Call sign: WPBS Power: 50.000 kW  
Pattern: ND-D Frequency: 1040 kHz  
Coordinates: N33°40'48.00" W84°01'44.00"

Call sign: WHO Power: 50.000 kW  
Pattern: ND-U Frequency: 1040 kHz  
Coordinates: N41°39'10.00" W93°21'01.00"

Notes

THE PROPOSED 0.005 mV/m AND  
THE WHO 0.1 mV/m CONTOURS

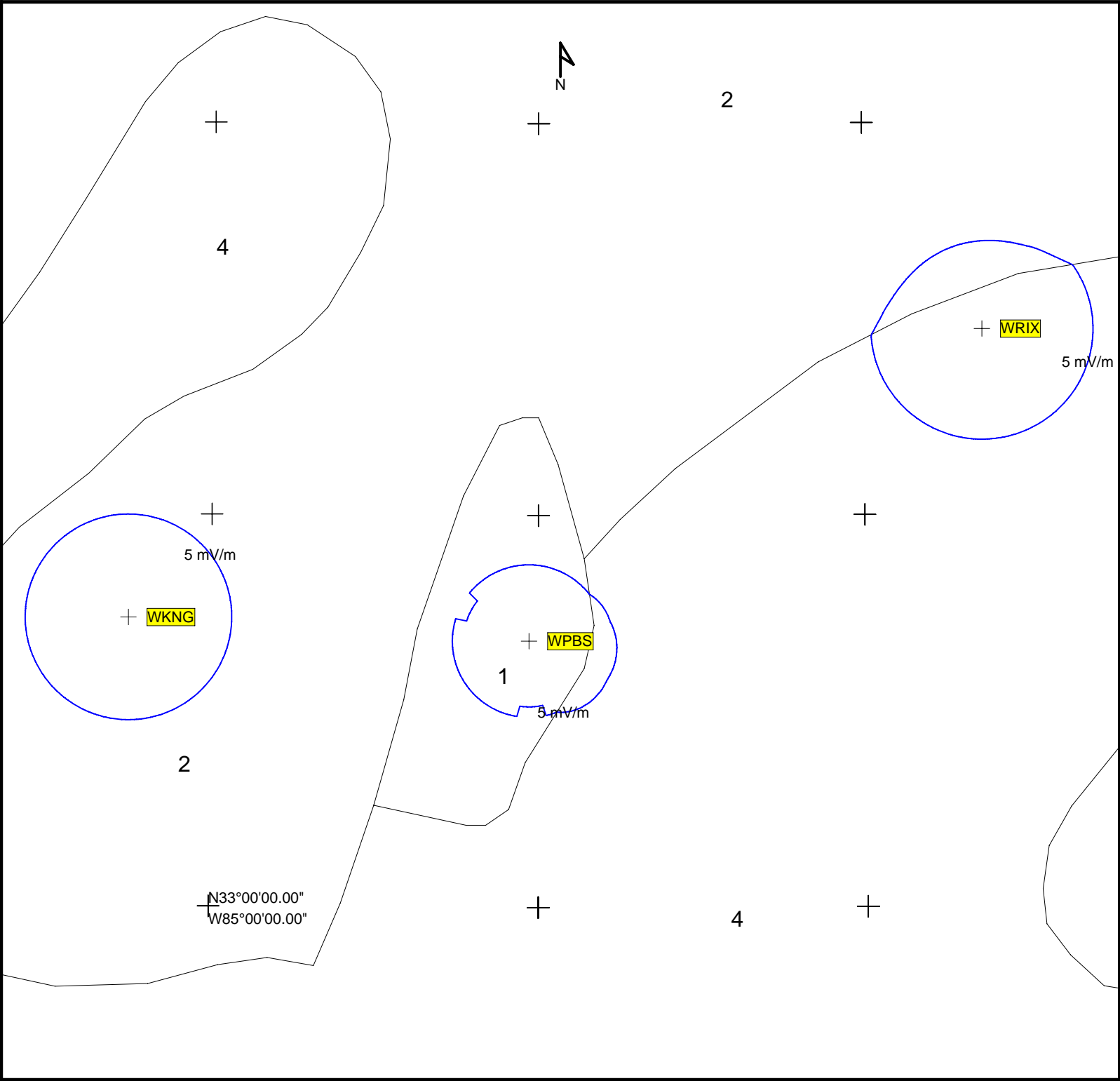


**FIGURE 1A**

COCHANNEL ALLOCATION STUDY - WHO

Scale 1:80,000,000





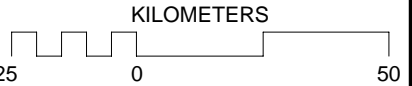
AMW™: WPBS2ADJ.am

Sites

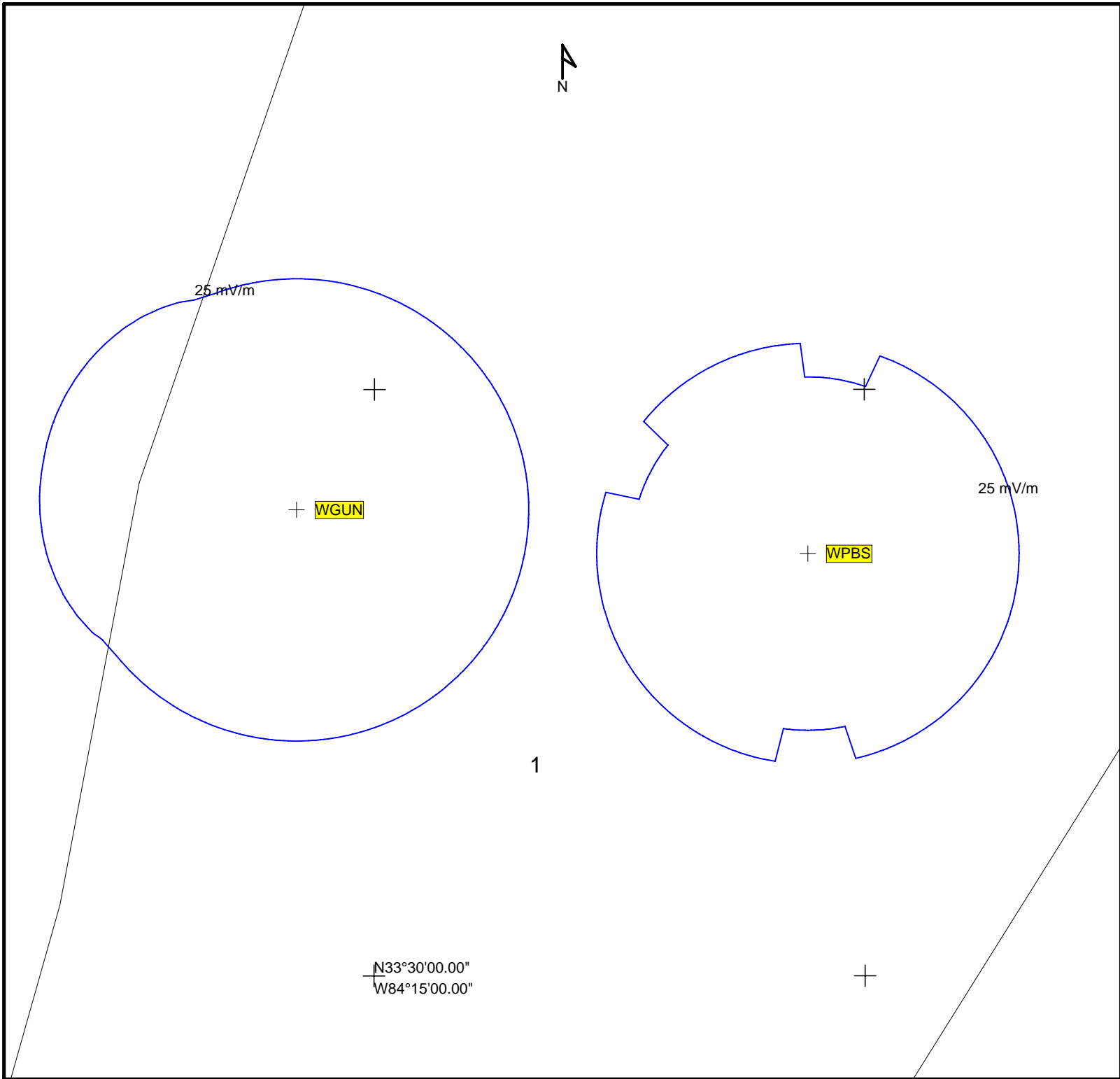
Call sign: WPBS Power: 50.000 kW  
Pattern: ND-D Frequency: 1040 kHz  
Coordinates: N33°40'48.00" W84°01'44.00"

Call sign: WRIX Power: 10.000 kW  
Pattern: ND-D Frequency: 1020 kHz  
Coordinates: N34°28'14.00" W82°38'03.00"

Call sign: WKNG Power: 50.000 kW  
Pattern: ND-D Frequency: 1060 kHz  
Coordinates: N33°44'06.00" W85°15'08.00"



**FIGURE 3**  
SECOND-ADJACENT CHANNELS STUDY  
Scale 1:1,500,000



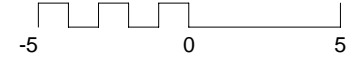
AMW™: WPBS3ADJ.am

Sites

Call sign: WGUN Power: 50.000 kW  
Pattern: ND-U Frequency: 1010 kHz  
Coordinates: N33°41'55.00" W84°17'23.00"

Call sign: WPBS Power: 50.000 kW  
Pattern: ND-D Frequency: 1040 kHz  
Coordinates: N33°40'48.00" W84°01'44.00"

KILOMETERS

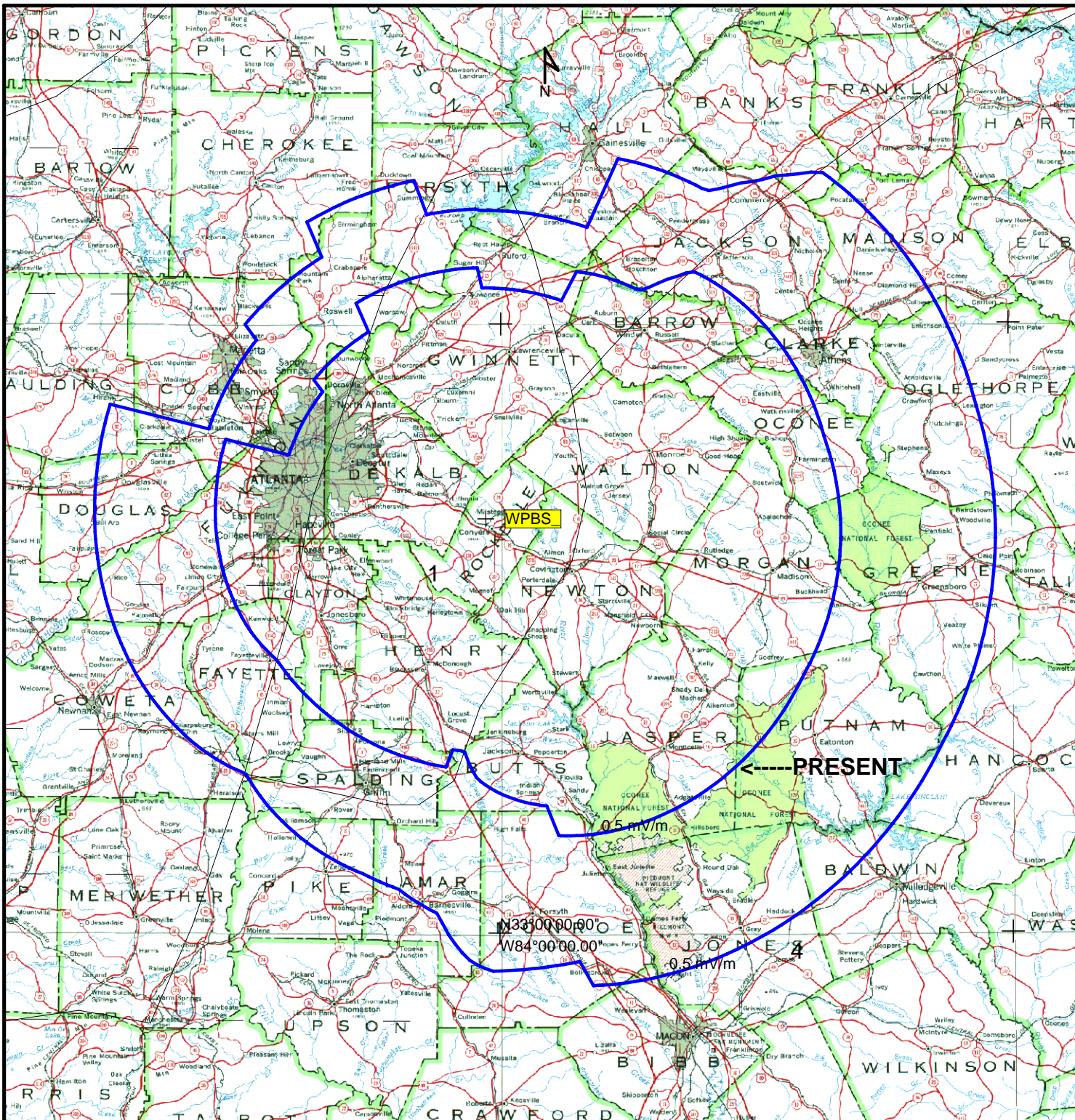


**FIGURE 4**

THIRD-ADJACENT CHANNELS STUDY

Scale 1:250,000



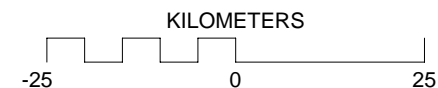


AMW™: WPBScovgPt5.am

#### Sites

Call sign: WPBS Power: 50.000 kW  
Pattern: ND-D Frequency: 1040 kHz  
Coordinates: N33°40'48.00" W84°01'44.00"

Call sign: WPBS\_ Power: 12.000 kW  
Pattern: ND-D Frequency: 1040 kHz  
Coordinates: N33°40'48.00" W84°01'44.00"

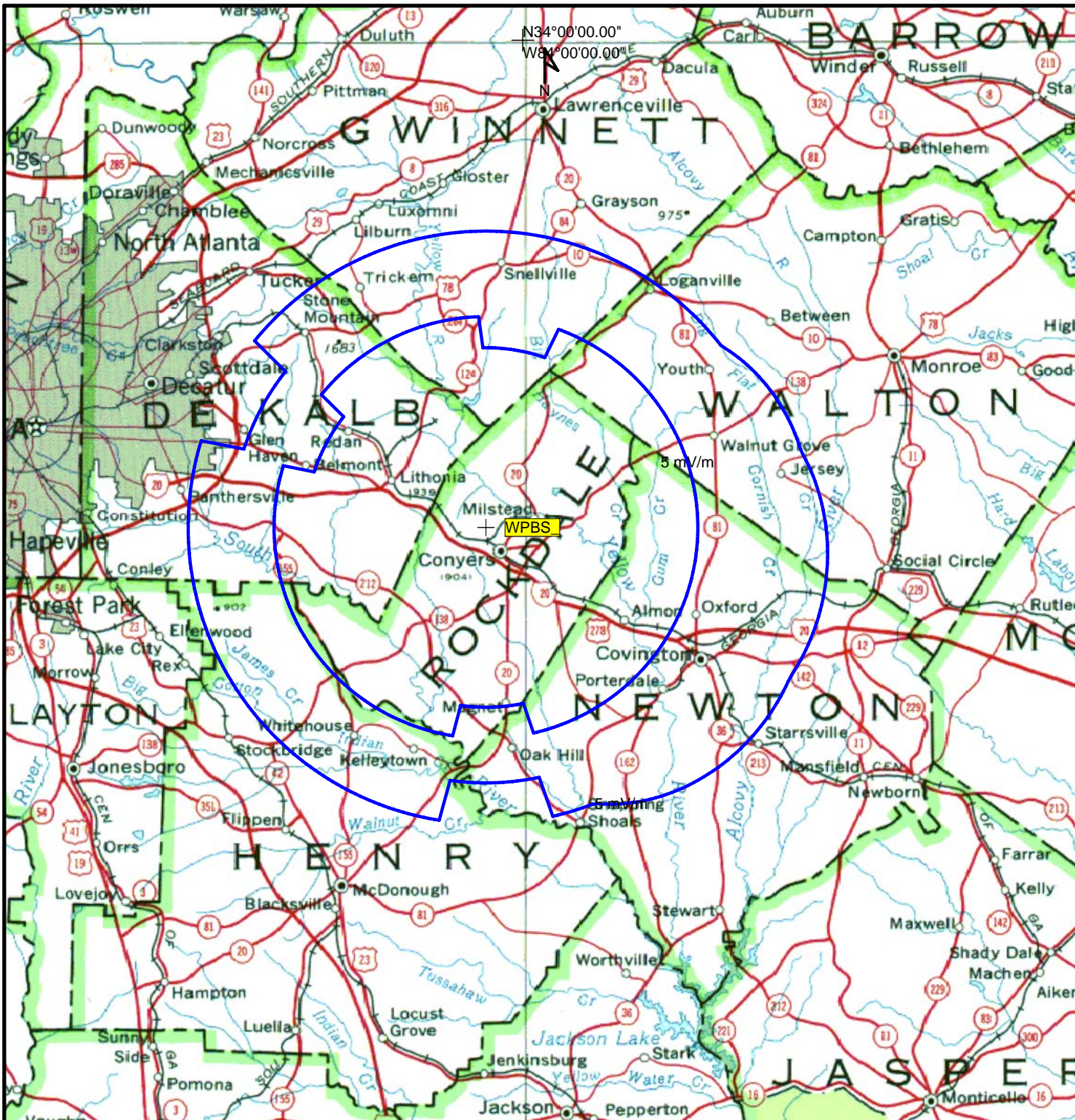


#### FIGURE 5

PRESENT AND PROPOSED 0.5 mV/m

Scale 1:1,000,000



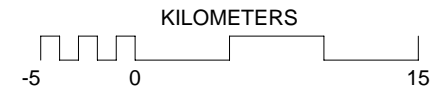


AMW™: WPBScovg2mVm.am

#### Sites

Call sign: WPBS Power: 50.000 kW  
 Pattern: ND-D Frequency: 1040 kHz  
 Coordinates: N33°40'48.00" W84°01'44.00"

Call sign: WPBS\_ Power: 12.000 kW  
 Pattern: ND-D Frequency: 1040 kHz  
 Coordinates: N33°40'48.00" W84°01'44.00"



#### FIGURE 6

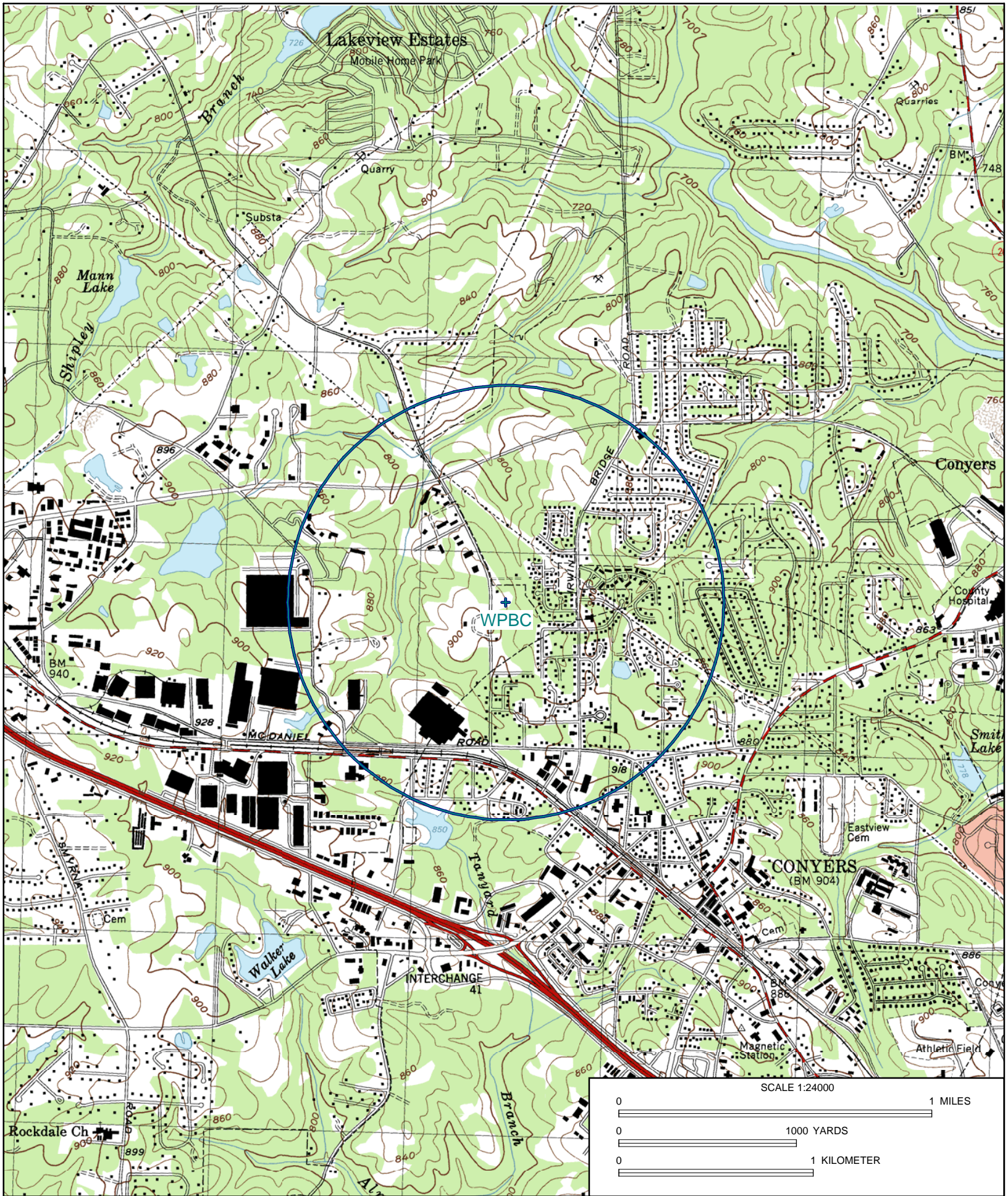
PRESENT AND PROPOSED 2 mV/m

Scale 1:400,000





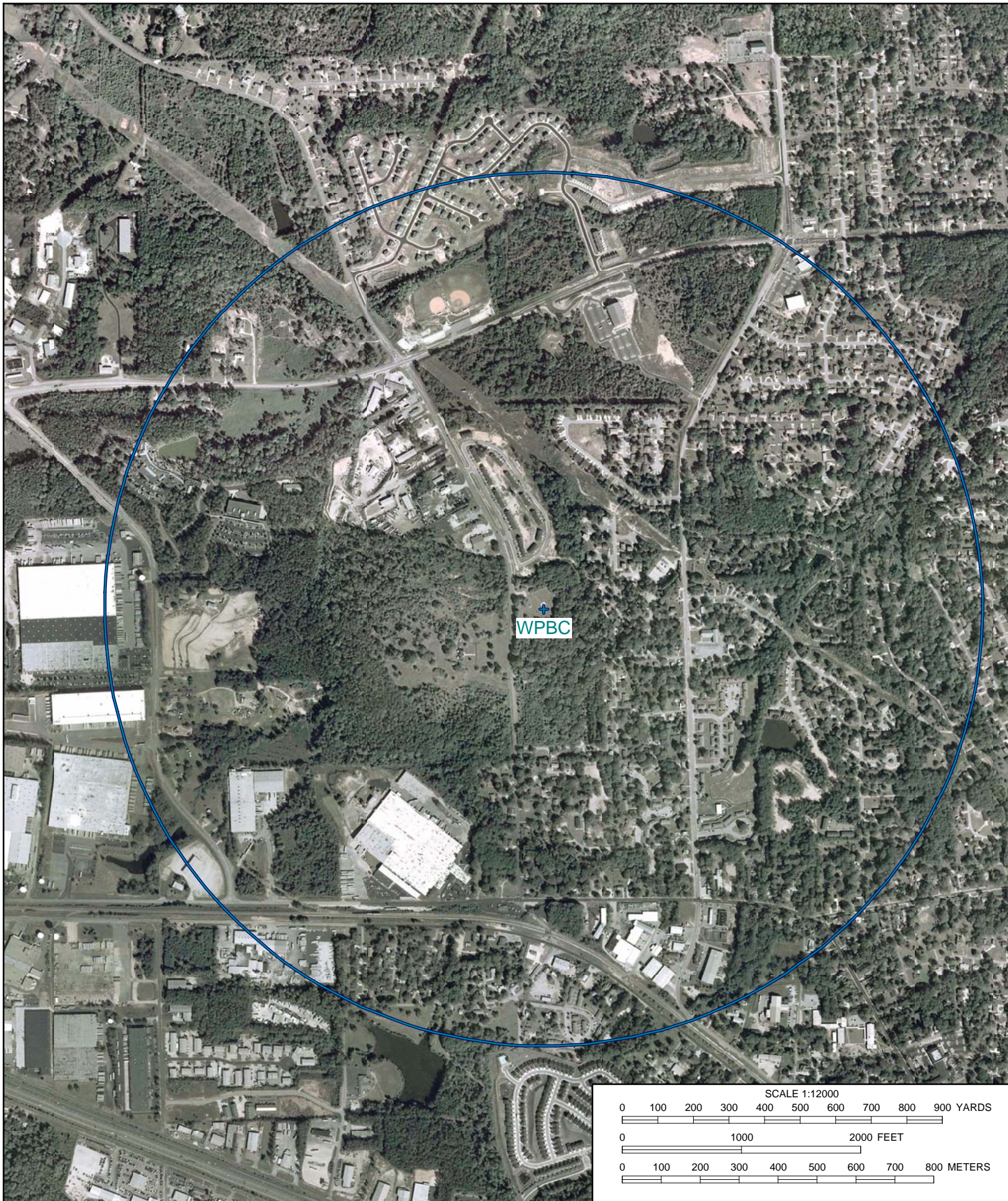




Name: CONYERS  
 Date: 7/16/2008  
 Scale: 1 inch equals 2000 feet

Location: 033° 40' 51.28" N 084° 01' 44.61" W NAD27  
 Caption: The proposed 1 volt contour and the WPBC tower site at  
 33-40-50.8 North and 84-01-44.1 West





Name: CONYERS SE, GA  
Date: 7/16/2008  
Scale: 1 inch equals 1000 feet

Location: 033° 40' 51.35" N 084° 01' 47.79" W NAD27  
Caption: The proposed 1 volt contour and the WPBS tower site at  
33-40-50.8 North and 84-01-44.1 West