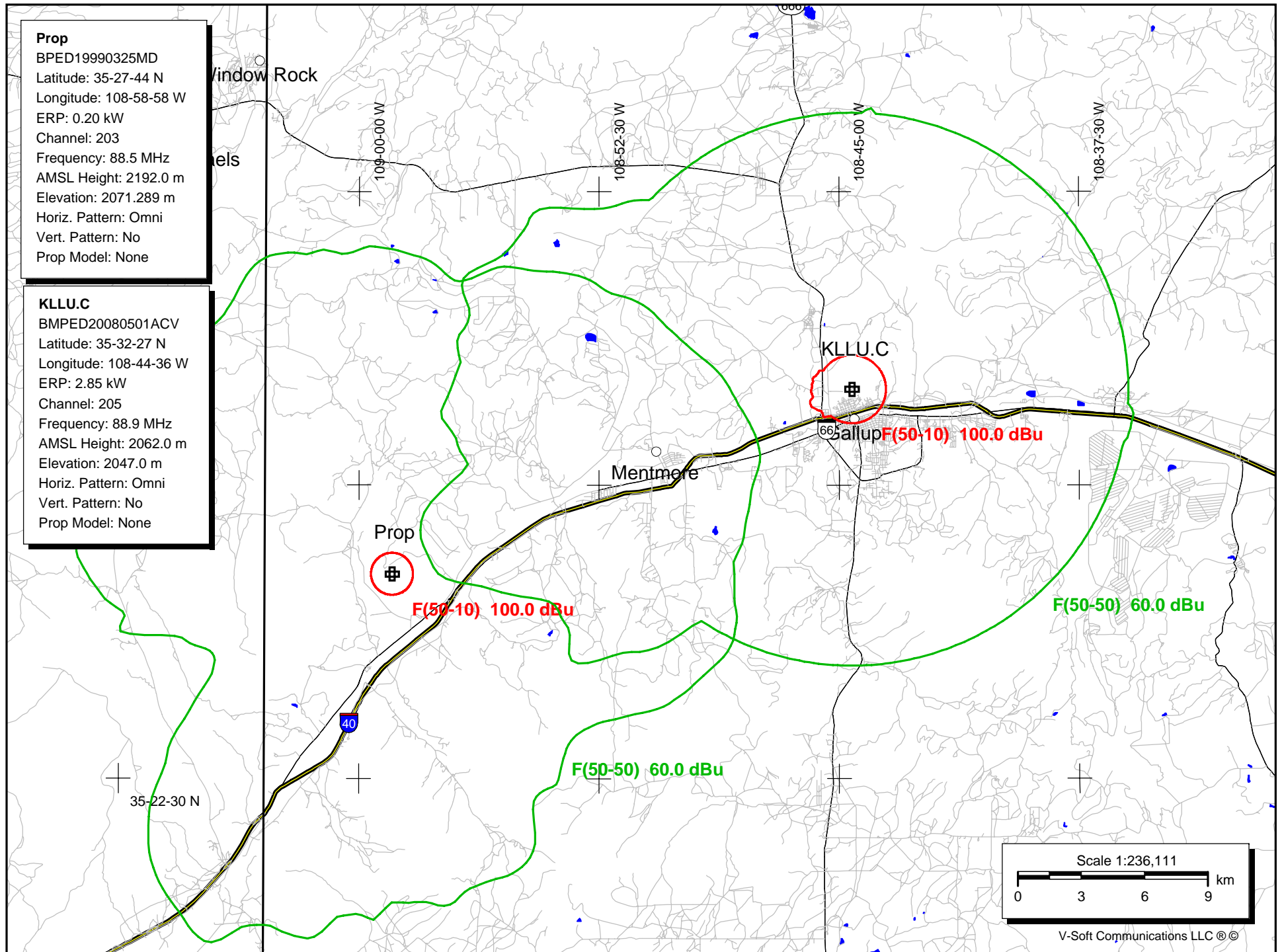


**Prop**

BPED19990325MD  
Latitude: 35-27-44 N  
Longitude: 108-58-58 W  
ERP: 0.20 kW  
Channel: 203  
Frequency: 88.5 MHz  
AMSL Height: 2192.0 m  
Elevation: 2071.289 m  
Horiz. Pattern: Omni  
Vert. Pattern: No  
Prop Model: None

**KLLU.C**

BMPED20080501ACV  
Latitude: 35-32-27 N  
Longitude: 108-44-36 W  
ERP: 2.85 kW  
Channel: 205  
Frequency: 88.9 MHz  
AMSL Height: 2062.0 m  
Elevation: 2047.0 m  
Horiz. Pattern: Omni  
Vert. Pattern: No  
Prop Model: None



Scale 1:236,111

0 3 6 9 km

V-Soft Communications LLC ©