

**EXHIBIT #14**  
**COMMUNITY COVERAGE**

**Positive Radio Network**  
Minor Change to Licensed Station  
WMSJ  
BLED-19990813KB  
Freeport, ME

September 2007

CH 207B

45 kW V DA

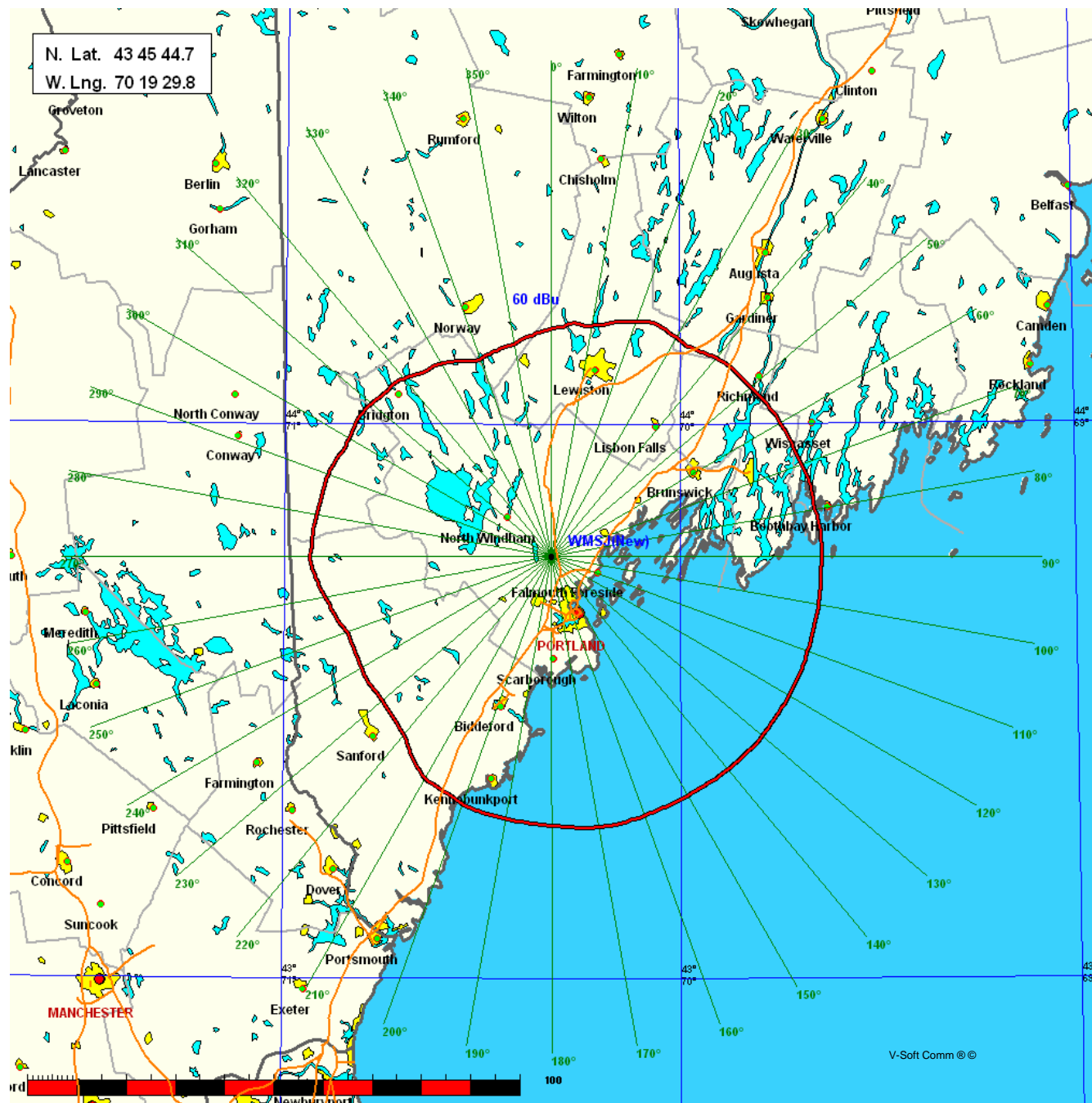
WMSJ operates on Channel 207, a reserved channel. According to Section 73.515, a minimum field strength of 1 mv/m (60 dBu) must be provided over at least 50% of its community of license or reach 50% of the population within the community. The map on page #2 shows the 60 dBu contour of the proposed WMSJ change. Freeport, ME, the city of license, is shown to be within this contour.

Page #3 is a distance to 60 dBu contour table of the proposed WMSJ facility.

The Positive Radio Network  
WMSJ(New) 60 dBu Coverage

Coverage Study  
09-07-2007

WMSJ(New) CH207 B 45.0 kW 203.95M COR  
Prot. = 60 dBu. Population = 490,511



N. Lat. = 434544.7 W. Lng. = 701929.8

HAAT and Distance to Contour - FCC Method - NGDC 30 SEC  
WMSJ)New) Distance to 60 dBu Contour

Azi. AV EL HAAT ERP kW dBk Field 60-F5

000	92.1	111.9	45.0000	16.53	1.000	45.83
010	83.7	120.3	45.0000	16.53	1.000	47.07
020	61.7	142.3	45.0000	16.53	1.000	50.20
030	57.5	146.5	45.0000	16.53	1.000	50.78
040	47.5	156.5	45.0000	16.53	1.000	52.09
050	40.6	163.4	45.0000	16.53	1.000	52.94
060	33.7	170.3	45.0000	16.53	1.000	53.70
070	29.0	175.0	45.0000	16.53	1.000	54.19
080	26.9	177.1	45.0000	16.53	1.000	54.39
090	20.9	183.1	45.0000	16.53	1.000	54.93
100	19.4	184.6	45.0000	16.53	1.000	55.07
110	16.1	187.9	45.0000	16.53	1.000	55.35
120	11.9	192.1	45.0000	16.53	1.000	55.71
130	9.7	194.3	45.0000	16.53	1.000	55.90
140	12.0	192.0	45.0000	16.53	1.000	55.70
150	16.2	187.8	45.0000	16.53	1.000	55.33
160	16.8	187.2	45.0000	16.53	1.000	55.28
170	18.6	185.4	45.0000	16.53	1.000	55.13
180	30.7	173.3	45.0000	16.53	1.000	54.01
190	36.9	167.1	45.0000	16.53	1.000	53.35
200	40.7	163.3	45.0000	16.53	1.000	52.92
210	37.7	166.3	45.0000	16.53	1.000	53.27
220	48.4	155.6	45.0000	16.53	1.000	51.98
230	52.9	151.1	45.0000	16.53	1.000	51.40
240	52.6	151.4	45.0000	16.53	1.000	51.43
250	57.1	146.9	45.0000	16.53	1.000	50.84
260	62.2	141.8	45.0000	16.53	1.000	50.13
270	69.1	134.9	45.0000	16.53	1.000	49.16
280	73.4	130.6	45.0000	16.53	1.000	48.54
290	74.5	129.5	45.0000	16.53	1.000	48.39
300	80.3	123.7	45.0000	16.53	1.000	47.55
310	77.6	126.4	45.0000	16.53	1.000	47.95
320	86.0	118.0	45.0000	16.53	1.000	46.74
330	97.9	106.1	45.0000	16.53	1.000	44.89
340	113.1	90.9	45.0000	16.53	1.000	42.23
350	106.4	97.6	45.0000	16.53	1.000	43.45

Ave El= 50.33 M HAAT= 153.67 M AMSL= 204 M