

## EXHIBIT 13.2

### VERTICAL PLAN OF ANTENNA SYSTEM

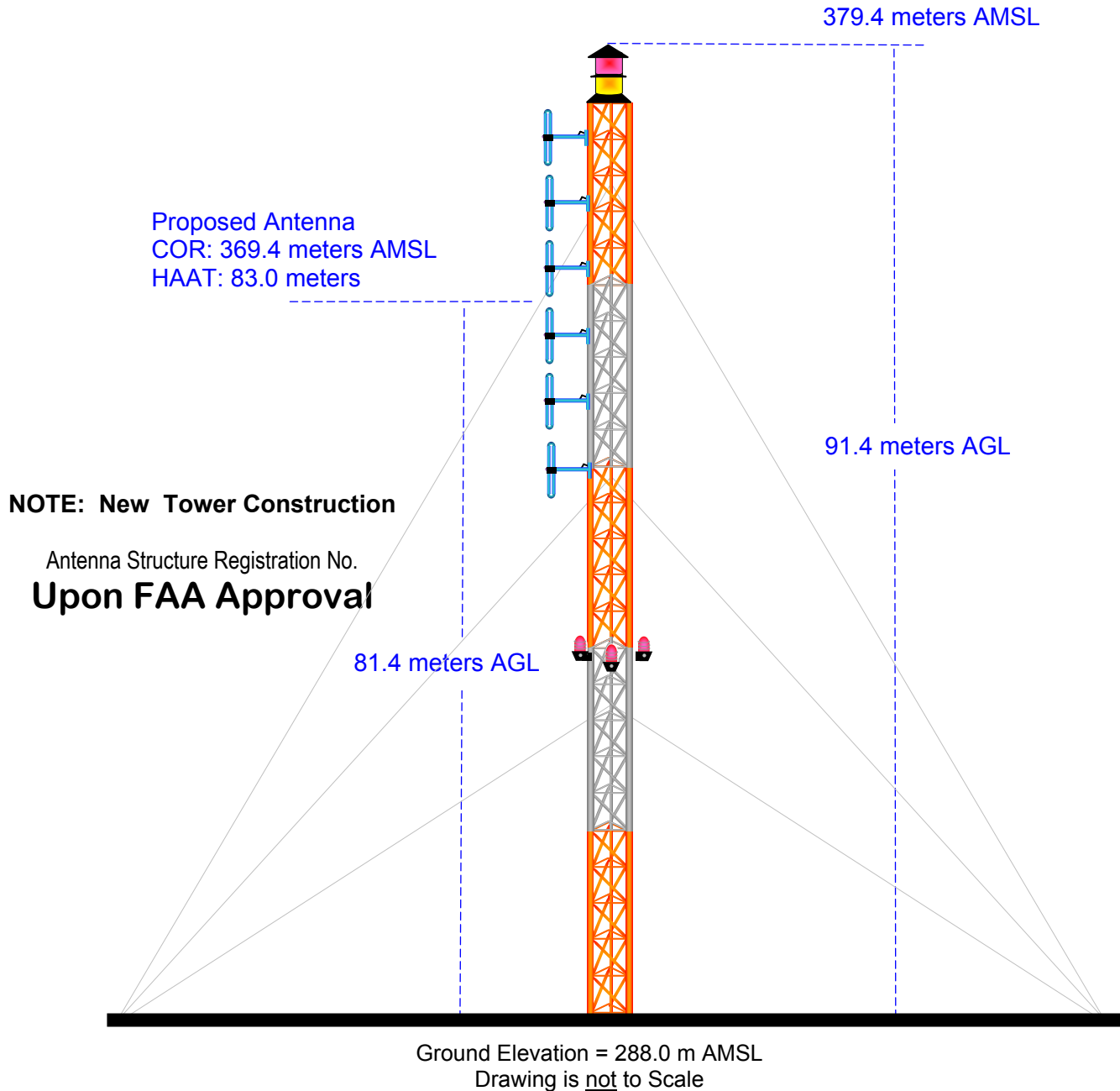
---

The site is located on 12 Mile Road, approximately 0.25 km South Of F Drive South, Burlington, Calhoun County, Michigan.

#### Site Location

NL: 42° 12' 06"

WL: 85° 03' 35"



**MUNN-REESE, INC.**

Broadcast Engineering Consultants  
Coldwater, MI 49036

## EXHIBIT 13.3

### PROPOSED FM OPERATING SPECIFICATIONS

---

**Applicant:** Michiana Christian Broadcasters, Inc.

**Call:** WCWB (FM)

**City of License:** Coldwater, MI

**Frequency:** 90.1 MHz    **Channel:** 211B1    **ERP:** 25.0 kW    **HAAT:** 83.0 m

**Transmitter Location:** 12 Mile Road, approximately 0.25 km South of F Drive South

**City:** Burlington

**County:** Calhoun

**State:** Michigan

**Site Coordinates:** NL 42° 12' 06" / WL 85° 03' 35"

**Tower Registration Number:** Upon FAA Approval

**Proposed Operation:** Class B1 – Directional Antenna

**Effective Radiated Power:** 0.001 kW (H)    25.0 kW (V)

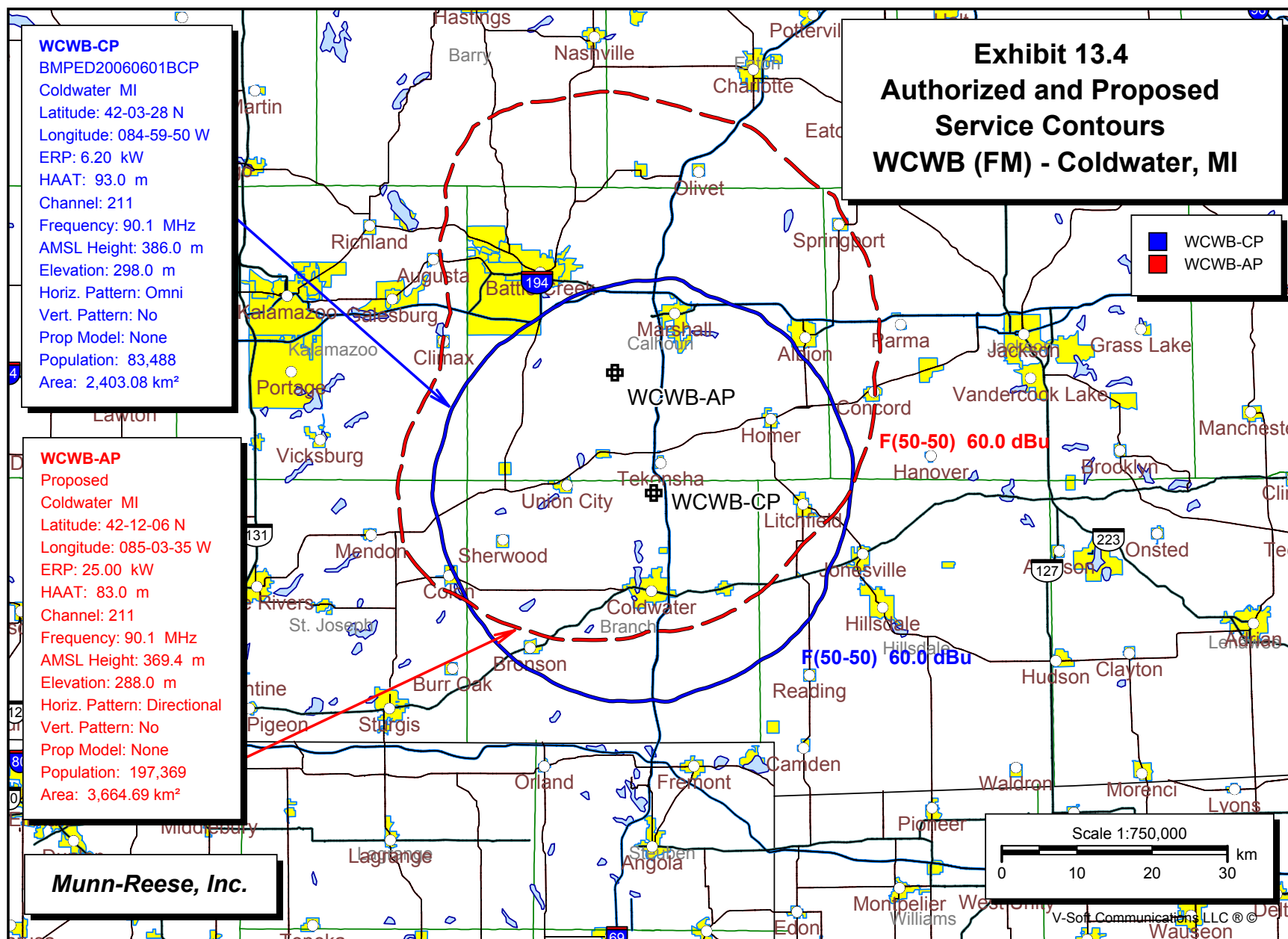
**Height of Antenna Radiation Center Above:**

	<u>Average Terrain</u>	<u>Mean Sea Level</u>	<u>Ground</u>
<b>Horizontal</b>	83.0 meters	369.4 meters	81.4 meters
<b>Vertical</b>	83.0 meters	369.4 meters	81.4 meters

**Elevation of Tower Site** : 288.0 meters AMSL

**Overall Height of Structure Above Ground** : 91.4 meters AGL

**Overall Height of Structure Above Mean Sea Level:** 379.4 meters AMSL



## Exhibit 13.5 - Tabulation of Directional Antenna Pattern

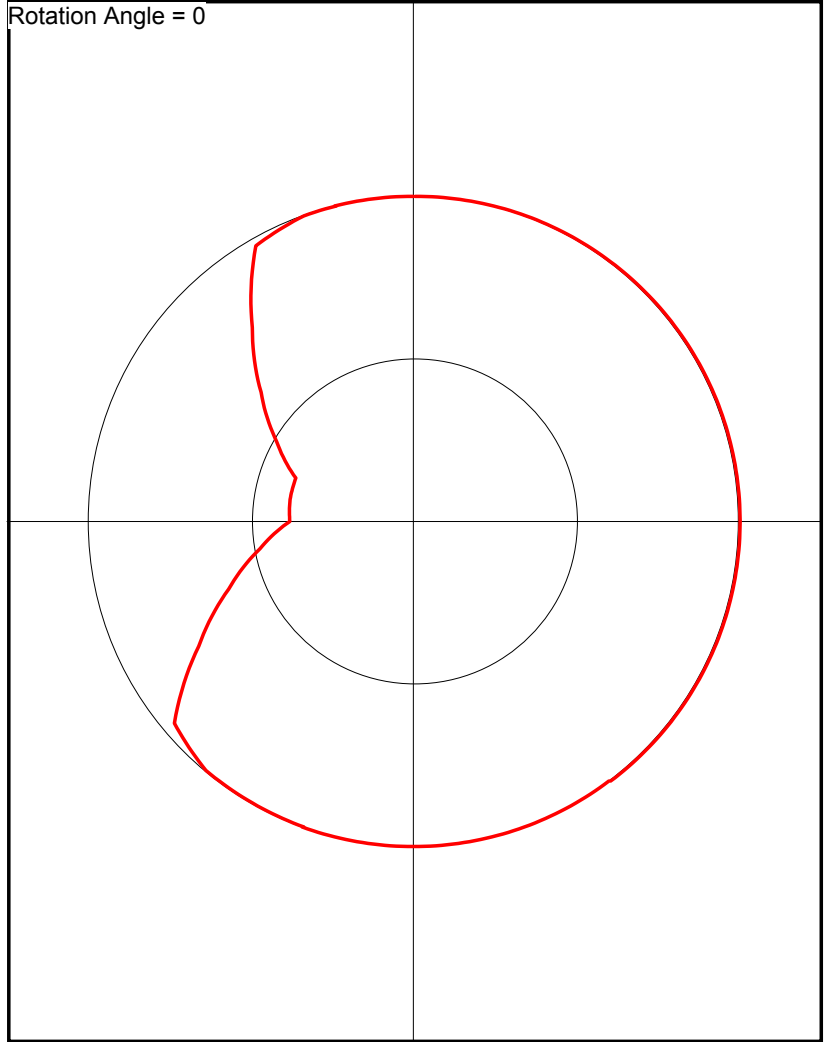
Pre-Rotation Antenna Pattern....

Azimuth (deg)

Effective Field

0.0	1.000
10.0	1.000
20.0	1.000
30.0	1.000
40.0	1.000
50.0	1.000
60.0	1.000
70.0	1.000
80.0	1.000
90.0	1.000
100.0	1.000
110.0	1.000
120.0	1.000
130.0	1.000
140.0	1.000
150.0	1.000
160.0	1.000
170.0	1.000
180.0	1.000
190.0	1.000
200.0	1.000
210.0	1.000
220.0	1.000
230.0	0.966
240.0	0.768
250.0	0.610
260.0	0.484
270.0	0.385
280.0	0.390
290.0	0.390
300.0	0.491
310.0	0.618
320.0	0.778
330.0	0.979
340.0	1.000
350.0	1.000

Rotation Angle = 0



**MUNN-REESE, INC.**

Broadcast Engineering Consultants

COLDWATER, MI 49036-0220

517-278-7339