

Exhibit 12.2

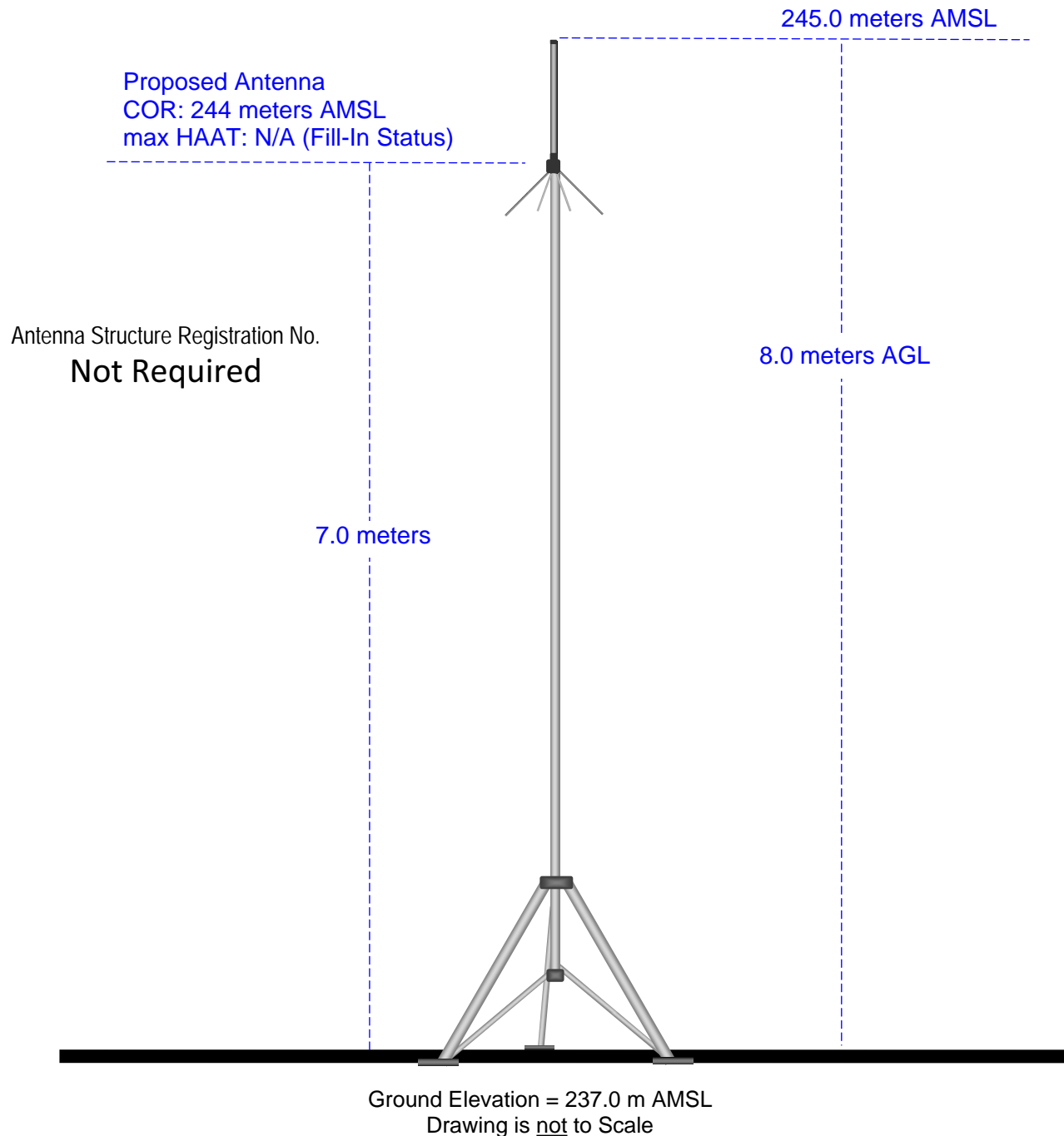
Vertical Plan of Antenna System

The site is located at 607 West Northridge Drive,
the city of Mahomet, Champaign County, Illinois.

Site Location (NAD 27)

NL: 40° 12' 14"

WL: 88° 24' 59"



MUNN-REESE, INC.

Broadcast Engineering Consultants
Coldwater, MI 49036

W278BJ.L
BLFT-20090804AAX
Latitude: 40-15-08 N
Longitude: 088-31-38 W
ERP: 0.055 kW
Channel: 278
Frequency: 103.5 MHz
AMSL Height: 231.0 m
Horiz. Pattern: Omni
Vert. Pattern: No
Prop Model:

Proposed 60 dBu Contour
Total Population: 790
Total Area: 99.86 sq. km

CH224D.P
Proposed Operation
Latitude: 40-12-14 N
Longitude: 088-24-59 W
ERP: 0.15 kW
Channel: 224
Frequency: 92.7 MHz
AMSL Height: 244.0 m
Horiz. Pattern: Omni
Vert. Pattern: No
Prop Model:

Proposed 60 dBu Contour
Total Population: 10,626
Total Area: 124.67 sq. km

Exhibit 12.3 Present vs. Proposed Service Contour Study

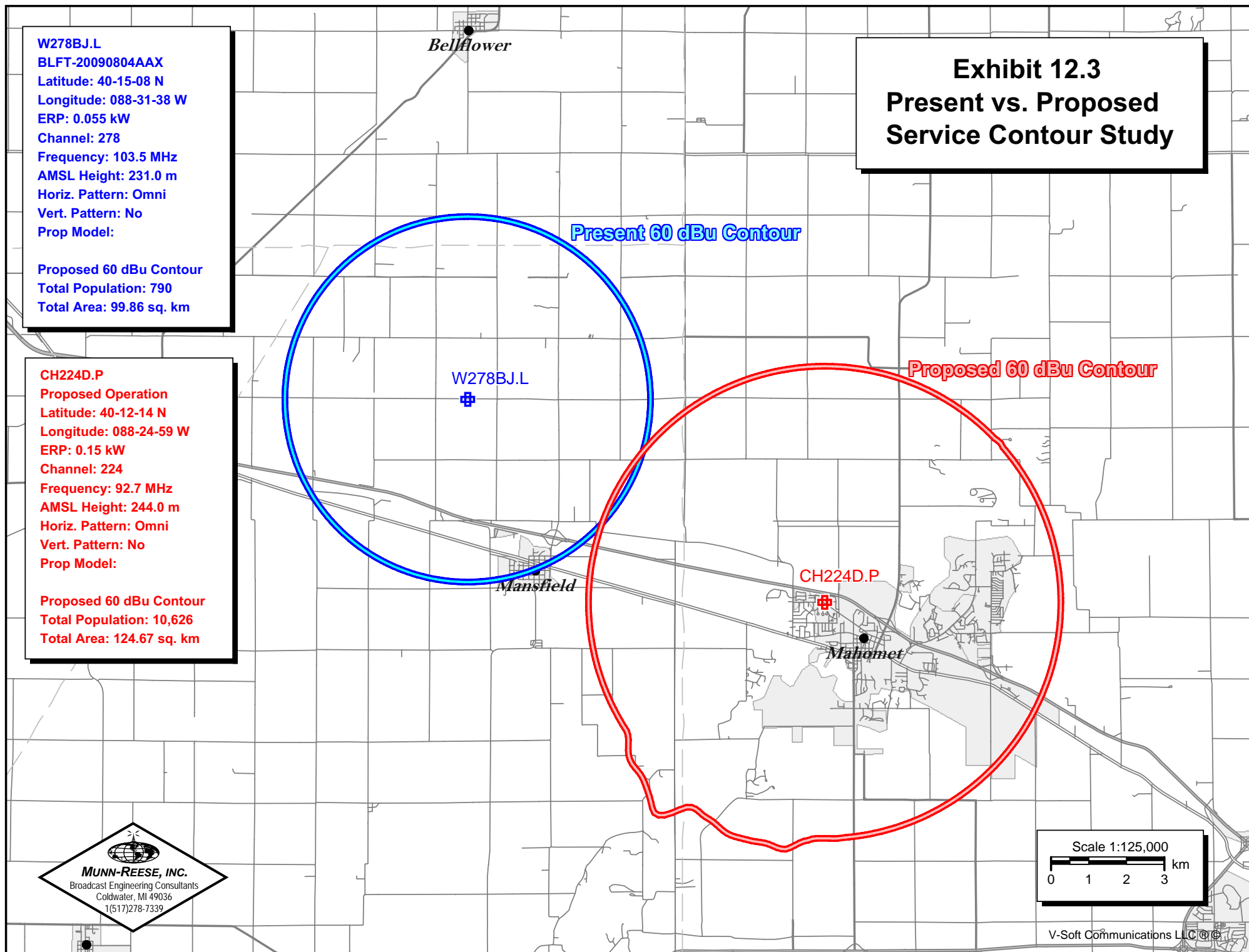


Exhibit 12.4 Proposed vs. Primary Service Contour Study

WCFF
BLH20010717AAA
Latitude: 40-00-45 N
Longitude: 088-08-29 W
ERP: 16.00 kW
Channel: 223
Frequency: 92.5 MHz
AMSL Height: 334.0 m
Horiz. Pattern: Omni
Vert. Pattern: No
Prop Model:

CH224D.P
Proposed Operation
Latitude: 40-12-14 N
Longitude: 088-24-59 W
ERP: 0.15 kW
Channel: 224
Frequency: 92.7 MHz
AMSL Height: 244.0 m
Horiz. Pattern: Omni
Vert. Pattern: No
Prop Model:

CH224D.P



Urbana

WCFF

Primary 57 dBu Contour

Proposed 57 dBu Contour (Sect. 74.1201(c))

Proposed 51 dBu f(50:10) Interference Contour

Pursuant to §74.1204(e), interference to the primary 57 dBu contour is allowable so long as interference does not occur over the primary city of license. In this instance the proposed facility operates as a 1st adjacent channel Fill-In Translator for WCFF(FM) - Urbana, IL CH223D. The attached exhibit demonstrates the proposed 51 dBu f(50:10) interference contour will not reach Urbana, IL.

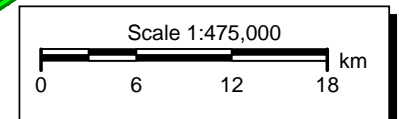


Exhibit 12.5

Tabulation of Proposed Allocation

Radio Assist Ministry, Inc.

REFERENCE		CH# 224D - 92.7 MHz, Pwr= 0.15 kW, HAAT= 23.1 M, COR= 244 M							DISPLAY DATES		
40 12 14.0 N.		Average Protected F(50-50)= 6.24 km							DATA 08-01-09		
88 24 59.0 W.		Omni-directional							SEARCH 08-03-09		
CH CITY	CALL	TYPE STATE	ANT STATE	AZI <--	DIST FILE #	LAT LNG	PWR(kW) HAAT(M)	INT(km) COR(M)	PRO(km) LICENSEE	*IN* (Overlap in km)	*OUT*
223B1 Urbana	WCFF	LIC _C_ IL		132.2 312.4	31.6 BLH20010717AAA	40 00 45.0 88 08 29.0	16.000 125	57.1 334	43.1 Saga Communications Of Ill	-31.7*<	-22.1*<
225A Colfax	WRPW	LIC _C_ IL		321.2 141.0	41.0 BLH19980210KC	40 29 28.0 88 43 14.0	6.000 100	41.7 345	27.0 Pilot Media, LLC	-6.9*<	5.2
224B1 Taylorville	WQLZ	LIC _CN IL		236.7 56.0	112.6 BLH19930528KE	39 38 38.0 89 30 51.0	11.500 147	105.4 322	45.3 Long Nine, Inc.	1.0	42.4
277A Thomasboro	WKZS	CP ZCX IL		102.3 282.5	26.2 BPH20080108ABK	40 09 12.0 88 06 56.0	5.200 107	136.6 321	51.1 Benton-weatherford Broadca	9.5R	16.7M
One Step Application											
224A Kankakee	WKIF	LIC _CN IL		23.2 203.5	111.2 BLH19861007KB	41 07 22.0 87 53 35.0	3.000 100	75.6 295	24.0 Wkif, Inc.	29.4	66.4
224A Brazil	AL2138	RSV ____ IN		124.8 305.6	133.6 RM10763	39 30 43.0 87 08 19.0	6.000 100	89.8 295	30.7	37.6	82.2
channel exchange											
226A Decatur	WYDS	LIC ZC_ IL		226.7 46.4	67.5 BMLH20020503AAQ	39 47 11.0 88 59 29.0	4.600 112	2.7 311	28.3 Wejt, Inc.	58.2	38.4
222D Clinton	W222BG	LIC _C_ IL		255.6 75.3	48.2 BLFT20090610AAF	40 05 43.0 88 57 51.0	0.100	0.7 276	7.9 Kaskaskia Broadcasting, In	41.3	39.4
224A Brazil	WSDM-FM	LIC _CX IN		124.8 305.6	133.6 BLH20051109AAI	39 30 44.0 87 08 18.0	6.000 91	87.0 278	28.6 Crossroads Investments, Ll	40.4	84.3
225A Veederburg	WSKL	LIC _C_ IN		94.2 274.8	82.2 BLH19990714KD	40 08 46.0 87 27 15.0	4.500 82	34.7 270	23.1 Zona Communications, Inc.	41.2	50.2
227B Peoria	WPBG	LIC _CY IL		297.2 116.4	106.6 BLH19810206AI	40 38 07.0 89 32 19.0	41.000 168	5.5 357	62.1 Monterey Licenses, LLC	94.8	42.9
221A Charleston	WWGO	LIC ZCN IL		176.1 356.1	75.2 BLH20020418ABC	39 31 40.0 88 21 23.0	6.000 100	2.8 305	29.3 Whqq, Inc	66.2	45.1
221D Normal	628827	APP _C_ IL		307.6 127.2	54.5 BNPFT20030310ABB	40 30 05.0 88 55 38.0	0.170	0.9 267	6.4 Cornerstone Community Radi	47.4	47.2
221D Bloomington	638365	APP _C_ IL		300.9 120.6	54.2 BNPFT20030317AFI	40 27 09.9 88 57 55.7	0.080	0.6 282	5.6 Spirit Education Associati	47.4	47.8

Terrain database is NGDC 30 SEC , R= 73.215 qualifying spacings or FCC minimum Spacings in KM, M= Margin in KM
 Contour distances are on direct line to and from reference station. Reference zone = 1, Co to 3rd adjacent.
 Ant Column: (D= DA Standard, Z= DA 73.215, N= Not DA 73.215, _= Omni), Polarization (C,H,V,E), Beamtilt(Y,N,X)
 "**affixed to 'IN' or 'OUT' values = site inside protected contour.

Yellow Highlighted Text denotes given first adjacent interference to Primary Station WCFF(FM), Urbana, IL. Interference to the primary station is allowable under §74.1204(e) so long as the area of interference does not occur over the primary city of license. In this instance the area of interference will be restricted to areas outside of Urbana, IL as noted in **Exhibit 12.4**.

Munn-Reese, Inc.

Broadcast Engineering Consultants
 Coldwater, MI 49036