

Television Channel 6 Protection

A study was conducted in accordance with 47CFR73.525 to determine the affected TV 6 stations. The results were included within the frequency study included as Exhibit 15 herein contained. WLUC-TV was determined to be the only station requiring further TV 6 contour protection study.

Figure 1 (below) displays the F[50,50] contours for WLUC-TV that intersected with the F[50,10] interfering contours as defined in 47CFR73.525(e)(1).

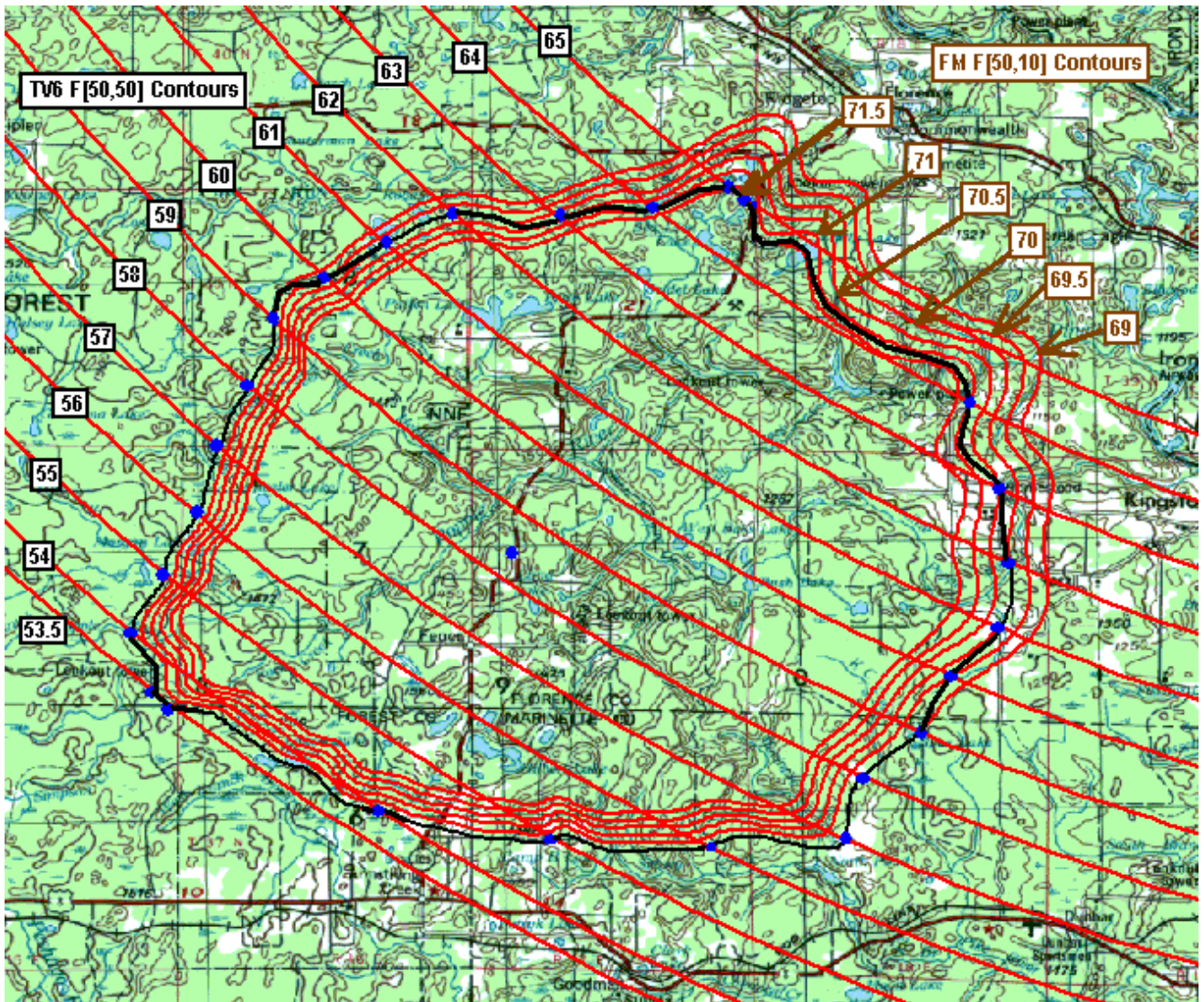


Exhibit 18 - Figure 1

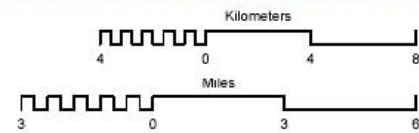
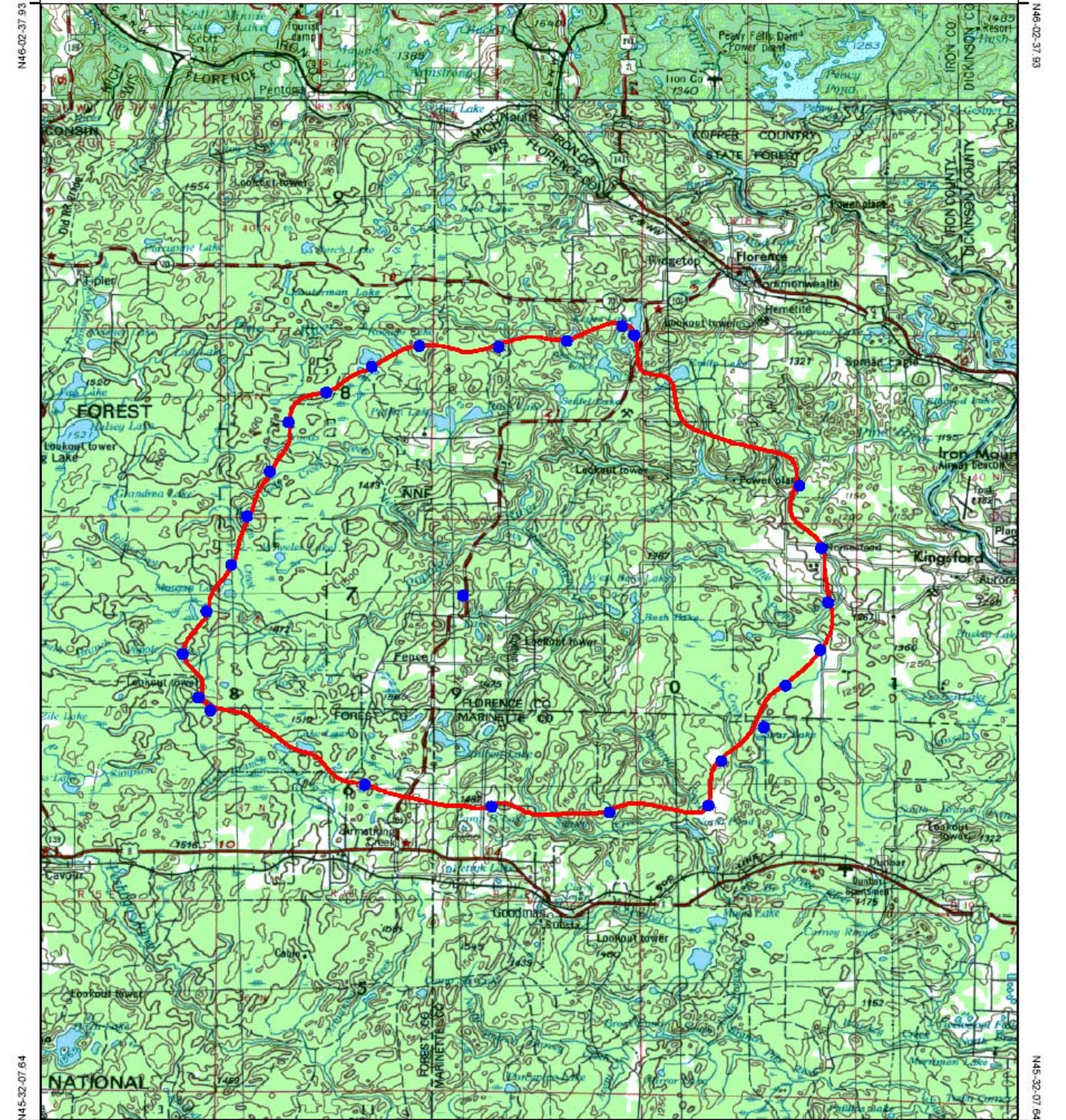
The intersection of the pertinent contours are indicated by blue dots and the resulting TV6 interfering contour is indicated by the black contour line. The interrelated contours used for this map are detailed in the following chart:

TV6 F[50,50]	U/D Ratio	CH 214 F[50,10]
53.5 dBu	15.5 dB	69 dBu
54 dBu	15 dB	69 dBu
55 dBu	14 dB	69 dBu
56 dBu	13 dB	69 dBu
57 dBu	12 dB	69 dBu
58 dBu	11 dB	69 dBu
59 dBu	10 dB	69 dBu
60 dBu	9.5 dB	69.5 dBu
61 dBu	9 dB	70 dBu
62 dBu	8 dB	70 dBu
63 dBu	7.5 dB	70.5 dBu
64 dBu	7 dB	71 dBu
65 dBu	6.5 dB	71.5 dBu

Figure 2 shows the TV6 Interference contour area produced by the contour mapping software, which determined that the TV6 interference area covers 524.818 square kilometers. There are no incorporated areas within the TV6 Interference area and it lies entirely within Florence County, Wisconsin.

The US Census 2000 data is available for entire Counties but not for subdivisions of counties. There are no incorporated areas of the county. Therefore, we were able to use the data for persons per square mile from the recent US 2000 Census data in accordance with 47CFR73.525(e)(2)(ii) since there were no incorporated areas to subtract from the county average.

The 2000 US Census data at <http://quickfacts.census.gov/qfd/states/55/55037.html> lists Florence County as having 10.4 persons per square mile. Since one square mile equals 2.5888 square kilometers, Florence County has 4.02 persons per square kilometer. At that rate, the proposed 524.818 square kilometer TV6 Interference area has the potential for affecting 2,110 persons. That falls well within the 3,000-person limit set by 47CFR73.525(c) and is therefore allowed.



Kilgore Broadcast Maintenance
WRVM; Suring, WI

Map scale: 1:250,000
Rasterized at: 1:250,000

Exhibit 18 - Figure 2