

## **Non-Interference Compliance**

Regarding Facility id 151479

Channel 279

### **Description of Exhibit 12 Contents**

This exhibit demonstrates that the proposed facility complies with contour overlap and interference protection provisions in all of the applicable rule sections and that this application for a construction permit is in full compliance with 47 C.F.R. § 74.1204.

**Let it be noted that should any actual real world interference occur, the applicant acknowledges that it will promptly suspend operation of this translator in accordance with 47 C.F.R. § 74.1203.**

Page 2 of this exhibit is an explanation of the method used to demonstrate compliance with contour overlap and interference provisions based on 47 C.F.R. § 74.1204(d), which states:

*[A]n application otherwise precluded by this section will be accepted if it can be demonstrated that no actual interference will occur due to intervening terrain, lack of population or such other factors as may be applicable.*

Page 3 contains a tabulation of the vertical radiation pattern of the proposed antenna and the minimum ground clearance of the interfering contour based on this pattern.

Pages 4 through 6 include a plot and a tabulation of the vertical radiation pattern for the proposed antenna provided by the antenna manufacturer.

Page 7 of this exhibit contains the tabulated data from the interference analysis, which shows all stations whose protected contours come within 50 km of the 34 dBμ F(50,10) contour of the proposed translator. These tabulated values were calculated using data from the FCC's CDBS files and 30 arc second terrain data. The column labeled "Adj" shows the number of channels difference between the entry and the proposed translator. The column labeled "Dist" shows the distance in km. The column labeled "Overlap" shows the area of contour overlap in square kilometers.

Page 8 of this exhibit is a portion of a USGS 1:24,000 scale 7.5 minute quadrangle at full scale with the calculated area of interference overlaid. The sheet includes the quadrangle name and measurement scale at the bottom-left corner (note: "Mt" refers to meters). The area of interference was calculated using the free space equation and 120 radials.

## Compliance with 47 C.F.R. § 74.1204(d)

All authorized second and third adjacent stations with which the proposed translator has contour overlap are tabulated below. Column four show the station's signal level at the proposed translator's tower site, and column five gives the minimum value within the entire standard interfering contour of the proposed translator (100 dBμ for most classes, 94 for class B, 97 for class B1). The minimum second or third adjacent F(50,50) contour within the proposed translator's standard interfering contour was used to calculate the proposed translator's actual "worst-case" interfering contour.

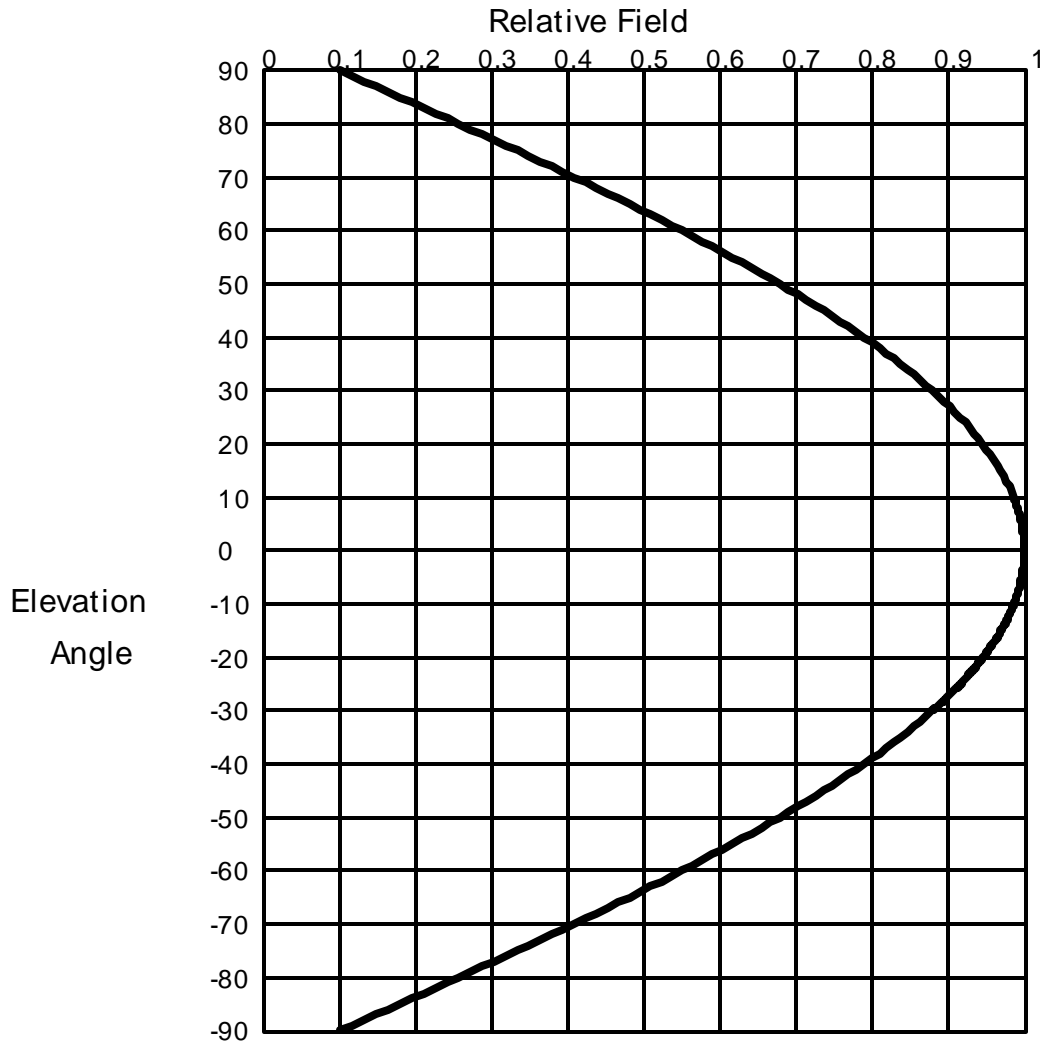
Application_id	File Number	Callsign	Contour at Tower	Min. Contour
176232	BMLH19920818KH	WGLF	77.5	77.4
247357	BLH19970530KB	WAIB	65	65
Minimum F(50,50) Contour of Adjacent Station within Proposed Translator's Standard Interfering Contour				<b>65</b>

FCC 02-244 at Section II.A.5 states that "when demonstrating that 'no actual interference will occur due to . . . other factors,' pursuant to Section 74.1204(d), an applicant may use the undesired-to-desired signal ratio method." The undesired-to-desired ratio for second and third adjacent stations required by § 74.1204(a) is 40 dB. Since the minimum protected contour strength within the proposed translator's standard interference contour is **65 dBμ**, this makes the proposed translator's worst-case interfering contour **105 dBμ**. By the free-space equation, this contour is calculated to extend a maximum of **124.7 m** from the transmit antenna.

The maximum horizontal plane of the interfering contour was calculated for 120 radials and plotted on the pertinent portion of a USGS quadrangle (page 8 of this exhibit). However, the field strength of the proposed translator's antenna varies with angle of depression from horizontal. The antenna relative fields are tabulated on the following page at 5 degree increments, starting at 5 degrees below horizontal. Antenna relative field strength data was provided and certified by the manufacturer of the proposed antenna. Using a free-space calculation that neglects any loss due to reflection, the vertical ground clearance of the proposed translator's interference contour has been tabulated. As shown on the following page, the area of interference clears the tower ground level (TGL) by **80.1 m** at the lowest point. The applicant has taken into account USGS quadrangles and relevant aerial photography in stating that no structures, except possibly tower support structures, puncture the area of interference. Hence, in accordance with 47 C.F.R. § 74.1204(d) and the clarification provided by the FCC in the decision *Re: Living Way Ministries* (FCC 02-244), a lack of population has been demonstrated within the area of interference and this application is therefore in full compliance with 47 C.F.R. § 74.1204.

<b>Antenna Manufacturer:</b>	<b>SWR</b>
<b>Antenna Model:</b>	<b>FM1</b>
<b>CORAGL:</b>	<b>145 m</b>
<b>Maximum ERP:</b>	<b>0.01 kW</b>
<b>Interfering Contour:</b>	<b>105 dBμ</b>
<b>Max Int. Contour Distance:</b>	<b>124.7 m</b>
<b>Min Ground Clearance:</b>	<b>80.1 m</b>

Depression Angle Below Horizontal	Antenna Relative Field	ERP (watts)	Distance to Interfering Contour from Antenna (m)	Horizontal Distance of Interfering Contour from Tower (m)	Vertical Clearance of Interfering Contour above TGL (m)
5	.997	9.9	124.4	123.9	134.2
10	.986	9.7	123.0	121.1	123.6
15	.969	9.4	120.9	116.8	113.7
20	.946	8.9	118.0	110.9	104.6
25	.916	8.4	114.3	103.6	96.7
30	.879	7.7	109.6	95.0	90.2
35	.837	7.0	104.4	85.5	85.1
40	.789	6.2	98.4	75.4	81.7
45	.736	5.4	91.8	64.9	80.1
50	.679	4.6	84.7	54.4	80.1
55	.616	3.8	76.8	44.1	82.1
60	.550	3.0	68.6	34.3	85.6
65	.480	2.3	59.9	25.3	90.7
70	.408	1.7	50.9	17.4	97.2
75	.333	1.1	41.5	10.8	104.9
80	.256	0.7	31.9	5.5	113.6
85	.178	0.3	22.2	1.9	122.9
90	.100	0.1	12.5	0.0	132.5
Minimum Clearance above TGL:					<b>80.1 m</b>



## Elevation Pattern

Scale: Linear

Systems With Reliability Inc.

Units: Field, Relative

CLIENT: *General*

Date: 11/10/03

ANTENNA TYPE: FM1/1

FREQUENCY: 98.1

PATTERN POL.: Circular

DIRECTIVITY(Peak): 0.883/ -0.539 dBd

Beam Tilt (Deg.) : 0

DIRECTIVITY(Horiz): 0.883/ -0.539 dBd

Null Fill(s)(%) : 0, 0, 0

## Relative Field Tabulation

Elev. Angle	Rel. Fld(dB)	Elev. Angle	Rel. Fld(dB)	Elev. Angle	Rel. Fld(dB)
3.2	.999 (-0.012)	-4.4	.997 (-0.023)	-12.0	.98 (-0.173 )
3.0	.999 (-0.011)	-4.6	.997 (-0.025)	-12.2	.98 (-0.178 )
2.8	.999 (-0.009)	-4.8	.997 (-0.027)	-12.4	.979 (-0.184 )
2.6	.999 (-0.008)	-5.0	.997 (-0.03)	-12.6	.978 (-0.19 )
2.4	.999 (-0.007)	-5.2	.996 (-0.032)	-12.8	.978 (-0.196 )
2.2	.999 (-0.006)	-5.4	.996 (-0.035)	-13.0	.977 (-0.203 )
2.0	.999 (-0.005)	-5.6	.996 (-0.037)	-13.2	.976 (-0.209 )
1.8	1.00 (-0.004)	-5.8	.995 (-0.04)	-13.4	.975 (-0.215 )
1.6	1.00 (-0.003)	-6.0	.995 (-0.043)	-13.6	.975 (-0.222 )
1.4	1.00 (-0.002)	-6.2	.995 (-0.046)	-13.8	.974 (-0.229 )
1.2	1.00 (-0.002)	-6.4	.994 (-0.049)	-14.0	.973 (-0.235 )
1.0	1.00 (-0.001)	-6.6	.994 (-0.052)	-14.2	.973 (-0.242 )
.8	1.00 (-0.001)	-6.8	.994 (-0.055)	-14.4	.972 (-0.249 )
.6	1.00 (0)	-7.0	.993 (-0.058)	-14.6	.971 (-0.256 )
.4	1.00 (0)	-7.2	.993 (-0.062)	-14.8	.97 (-0.263 )
.2	1.00 (0)	-7.4	.993 (-0.065)	-15.0	.969 (-0.271 )
.0	1.00 (0)	-7.6	.992 (-0.069)	-15.2	.969 (-0.278 )
-.2	1.00 (0)	-7.8	.992 (-0.073)	-15.4	.968 (-0.285 )
-.4	1.00 (0)	-8.0	.991 (-0.076)	-15.6	.967 (-0.293 )
-.6	1.00 (0)	-8.2	.991 (-0.08)	-15.8	.966 (-0.3 )
-.8	1.00 (-0.001)	-8.4	.99 (-0.084)	-16.0	.965 (-0.308 )
-1.0	1.00 (-0.001)	-8.6	.99 (-0.088)	-16.2	.964 (-0.316 )
-1.2	1.00 (-0.002)	-8.8	.989 (-0.093)	-16.4	.963 (-0.324 )
-1.4	1.00 (-0.002)	-9.0	.989 (-0.097)	-16.6	.962 (-0.332 )
-1.6	1.00 (-0.003)	-9.2	.988 (-0.101)	-16.8	.962 (-0.34 )
-1.8	1.00 (-0.004)	-9.4	.988 (-0.106)	-17.0	.961 (-0.348 )
-2.0	.999 (-0.005)	-9.6	.987 (-0.11)	-17.2	.96 (-0.357 )
-2.2	.999 (-0.006)	-9.8	.987 (-0.115)	-17.4	.959 (-0.365 )
-2.4	.999 (-0.007)	-10.0	.986 (-0.12)	-17.6	.958 (-0.374 )
-2.6	.999 (-0.008)	-10.2	.986 (-0.124)	-17.8	.957 (-0.383 )
-2.8	.999 (-0.009)	-10.4	.985 (-0.129)	-18.0	.956 (-0.391 )
-3.0	.999 (-0.011)	-10.6	.985 (-0.134)	-18.2	.955 (-0.4 )
-3.2	.999 (-0.012)	-10.8	.984 (-0.14)	-18.4	.954 (-0.409 )
-3.4	.998 (-0.014)	-11.0	.983 (-0.145)	-18.6	.953 (-0.418 )
-3.6	.998 (-0.015)	-11.2	.983 (-0.15)	-18.8	.952 (-0.427 )
-3.8	.998 (-0.017)	-11.4	.982 (-0.156)	-19.0	.951 (-0.437 )
-4.0	.998 (-0.019)	-11.6	.982 (-0.161)	-19.2	.95 (-0.446 )
-4.2	.998 (-0.021)	-11.8	.981 (-0.167)	-19.4	.949 (-0.456 )

Systems With Reliability Inc.

Page 1 of 2

CLIENT: *General*

Date: 11/10/03

ANTENNA TYPE: FM1/1

FREQUENCY: 98.1

PATTERN POL.: Circular

DIRECTIVITY(Peak): 0.883/ -0.539 dBd

Beam Tilt (Deg.) : 0

DIRECTIVITY(Horiz): 0.883/ -0.539 dBd

Null Fill(s)(%) : 0, 0, 0

# Relative Field Tabulation

Elev. Angle	Rel. Fld(dB)	Elev. Angle	Rel. Fld(dB)	Elev. Angle	Rel. Fld(dB)
-19.6	.948 (-0.465)	-27.2	.90 (-0.911)	-54.0	.629 (-4.027 )
-19.8	.947 (-0.475)	-27.4	.899 (-0.924)	-55.0	.616 (-4.205 )
-20.0	.946 (-0.485)	-27.6	.898 (-0.939)	-56.0	.603 (-4.39 )
-20.2	.945 (-0.495)	-27.8	.896 (-0.953)	-57.0	.59 (-4.58 )
-20.4	.944 (-0.505)	-28.0	.895 (-0.967)	-58.0	.577 (-4.778 )
-20.6	.942 (-0.515)	-28.2	.893 (-0.981)	-59.0	.564 (-4.982 )
-20.8	.941 (-0.525)	-28.4	.892 (-0.996)	-60.0	.55 (-5.193 )
-21.0	.94 (-0.535)	-28.6	.89 (-1.01)	-61.0	.536 (-5.411 )
-21.2	.939 (-0.546)	-28.8	.889 (-1.025)	-62.0	.523 (-5.638 )
-21.4	.938 (-0.556)	-29.0	.887 (-1.04)	-63.0	.509 (-5.873 )
-21.6	.937 (-0.567)	-29.2	.886 (-1.055)	-64.0	.495 (-6.116 )
-21.8	.936 (-0.578)	-29.4	.884 (-1.07)	-65.0	.48 (-6.369 )
-22.0	.934 (-0.589)	-29.6	.883 (-1.085)	-66.0	.466 (-6.631 )
-22.2	.933 (-0.6)	-29.8	.881 (-1.101)	-67.0	.452 (-6.904 )
-22.4	.932 (-0.611)	-30.0	.879 (-1.116)	-68.0	.437 (-7.187 )
-22.6	.931 (-0.622)	-31.0	.871 (-1.195)	-69.0	.423 (-7.483 )
-22.8	.93 (-0.633)	-32.0	.863 (-1.277)	-70.0	.408 (-7.791 )
-23.0	.928 (-0.645)	-33.0	.855 (-1.363)	-71.0	.393 (-8.112 )
-23.2	.927 (-0.656)	-34.0	.846 (-1.451)	-72.0	.378 (-8.448 )
-23.4	.926 (-0.668)	-35.0	.837 (-1.543)	-73.0	.363 (-8.799 )
-23.6	.925 (-0.68)	-36.0	.828 (-1.638)	-74.0	.348 (-9.167 )
-23.8	.923 (-0.692)	-37.0	.819 (-1.737)	-75.0	.333 (-9.553 )
-24.0	.922 (-0.704)	-38.0	.809 (-1.839)	-76.0	.318 (-9.959 )
-24.2	.921 (-0.716)	-39.0	.799 (-1.944)	-77.0	.302 (-10.387 )
-24.4	.92 (-0.728)	-40.0	.789 (-2.054)	-78.0	.287 (-10.839 )
-24.6	.918 (-0.74)	-41.0	.779 (-2.167)	-79.0	.272 (-11.317 )
-24.8	.917 (-0.753)	-42.0	.769 (-2.283)	-80.0	.256 (-11.826 )
-25.0	.916 (-0.765)	-43.0	.758 (-2.404)	-81.0	.241 (-12.367 )
-25.2	.914 (-0.778)	-44.0	.747 (-2.529)	-82.0	.225 (-12.946 )
-25.4	.913 (-0.791)	-45.0	.736 (-2.658)	-83.0	.21 (-13.569 )
-25.6	.912 (-0.803)	-46.0	.725 (-2.791)	-84.0	.194 (-14.241 )
-25.8	.91 (-0.816)	-47.0	.714 (-2.928)	-85.0	.178 (-14.97 )
-26.0	.909 (-0.83)	-48.0	.702 (-3.071)	-86.0	.163 (-15.768 )
-26.2	.908 (-0.843)	-49.0	.69 (-3.217)	-87.0	.147 (-16.648 )
-26.4	.906 (-0.856)	-50.0	.679 (-3.369)	-88.0	.131 (-17.627 )
-26.6	.905 (-0.87)	-51.0	.666 (-3.525)	-89.0	.116 (-18.733 )
-26.8	.903 (-0.883)	-52.0	.654 (-3.687)	-90.0	.10 (-20 )
-27.0	.902 (-0.897)	-53.0	.642 (-3.854)	90.0	.00 (-50 )

Systems With Reliability Inc.

Page 2 of 2

CLIENT: *General*

Date: 11/10/03

ANTENNA TYPE: FM1/1

FREQUENCY: 98.1

PATTERN POL.: Circular

DIRECTIVITY(Peak): 0.883/ -0.539 dBd

Beam Tilt (Deg.) : 0

DIRECTIVITY(Horiz): 0.883/ -0.539 dBd

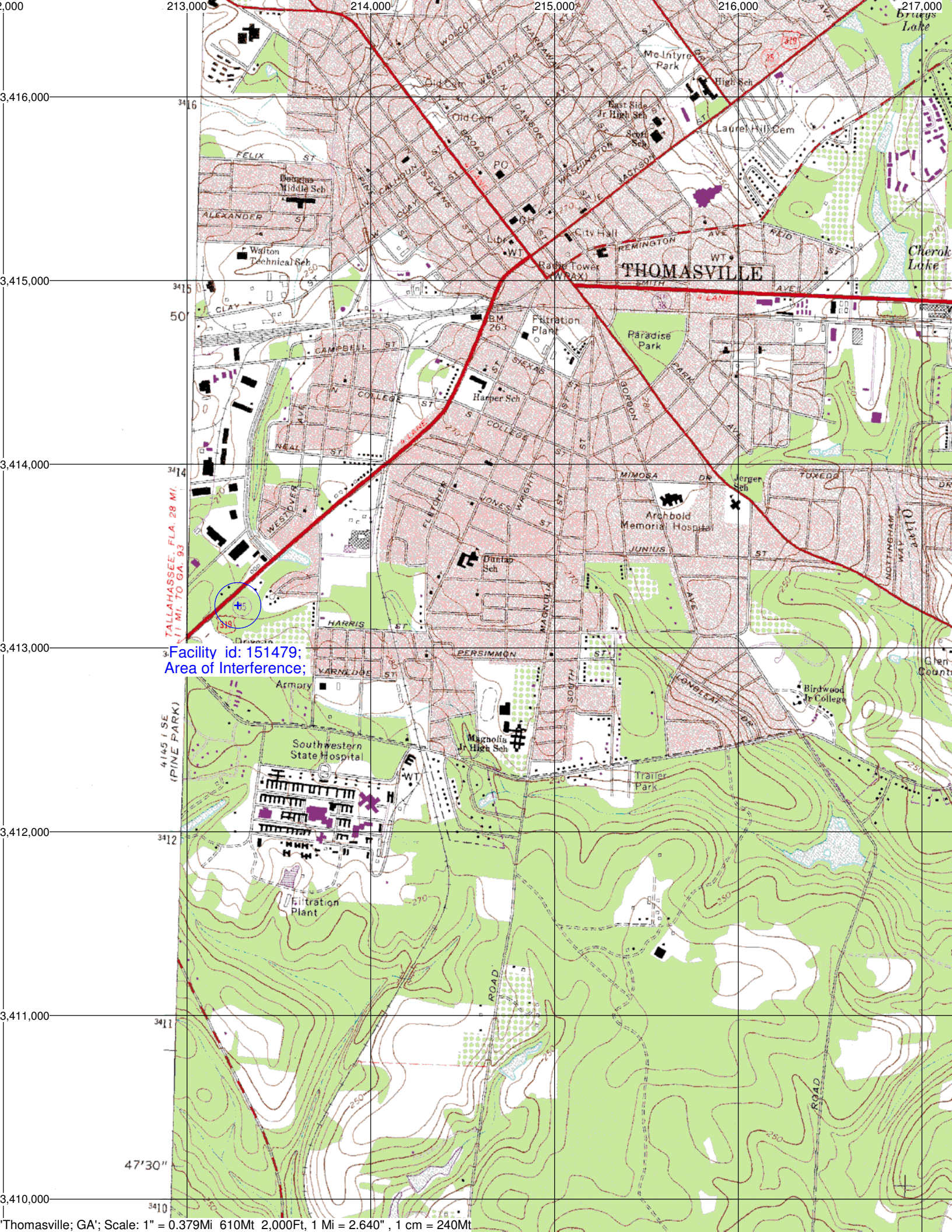
Null Fill(s)(%) : 0, 0, 0

**Adjacent Channel Study**  
**For Station W279BD, Facility\_id: 151479**

**Co-channel through third adjacent:**

Application_id	Facility_id	Prefix	ARN	Call	Licensee	Class	City	State	Status	ERP	RCAMSL	Channel	Adj	Dist	Overlap
176232	64559	BMLH	19920818KH	WGLF	TALLAHASSEE BROADCASTING COMPANY	C	TALLAHASSEE	FL	LIC	90	454	281	2	40.9	0.0597
247357	9312	BLH	19970530KB	WAIB	CATAMOUNT-I COMMUNICATIONS, INC.	C2	TALLAHASSEE	FL	LIC	42	201	276	3	42.6	0.0597
683391	151417	BNPFT	20030828AYN	W279BL	EDGEWATER BROADCASTING, INC.	D	MONTICELLO	FL	CP	0.01	174	279	0	35.9	0
259306	9312	BMLH	19971215KD	WAIB	CATAMOUNT-I COMMUNICATIONS, INC.	C2	TALLAHASSEE	FL	LIC	5	129	276	3	42.4	0
628344	65171	BMJPF	20030310AFI	W252BN	TEMPLE BAPTIST CHURCH, INC.	D	TALLAHASSEE	FL	APP	0.01	164	279	0	45.8	0
636121	143890	BNPFT	20030314AFS	NEW	EDUCATIONAL MEDIA FOUNDATION	D	TALLAHASSEE	FL	APP	0.013	145	279	0	55.1	0
677898	138271	BNPFT	20030815AAD	W279AS	AUGUSTA RADIO FELLOWSHIP INSTITUTE, INC	D	COLQUITT	GA	CP	0.013	150	279	0	64	0
198693	317	BLED	19940426KA	WPLH	ABRAHAM BALDWIN AGRICULTURAL COLLEGE	D	TIFTON	GA	LIC	0.029	150	276	3	86.1	0
192932	57782	BLH	19931213KC	WJAD	CUMULUS LICENSING CORP.	C3	LEESBURG	GA	LIC	12.5	212	278	1	95	0





TALLAHASSEE, FLA. 28 MI.  
11 MI. TO GA. 93

Facility id: 151479;  
Area of Interference;

4145 (SE  
(PINE PARK)

47'30"