

Three Angels Broadcasting Network  
 Dan Peek—Engineer  
 P.O. Box 220  
 West Frankfort, Illinois 62896

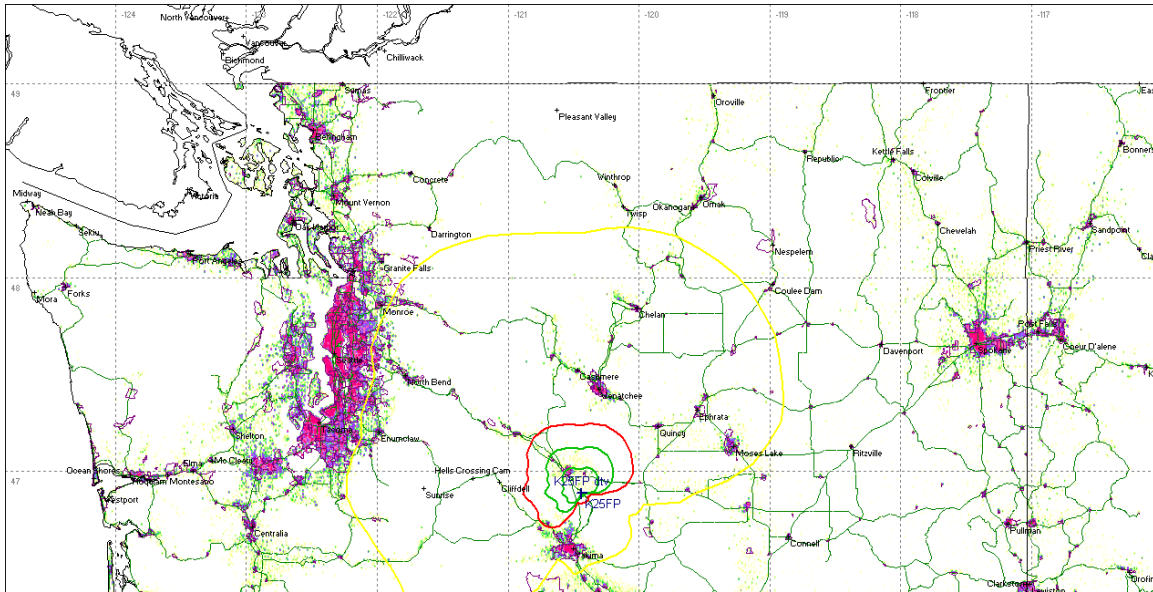
August 4, 2009

In evaluating the proposed digital flash cut for K25FP FID 41108, an outgoing interference study was executed on the proposed design in the attached application using the OET-69 Longley Rice methodology. The stations listed in the table below showed possible interference. When these stations were evaluated for outgoing interference, there was zero percent interference present found in each case when rounded to the nearest whole percent.

Three Angels Broadcasting Network also requests that the commission waive international coordination with Canada since the proposed 19dBu F(50,10) contour does not cross into Canadian territory. Please see the map below.

Callsign	Fac ID	ARN	City	Class	Overlap Pop%
K69BE	35004	BDISTT20061002AEO	ELLENSBURG, ETC.	LP NTSC	0.00%
DK39DM	10947	BSTA20090724AEE	ELLENSBURG	LP NTSC	0.00%
K39DM	10947	BPTTL20060127ARI	ELLENSBURG	LP NTSC	0.00%
K60EB	57522	BLTTL20040616AAS	YAKIMA	LP NTSC	0.00%
KAZW-LP	12730	BLTTL20040122ABW	YAKIMA	LP NTSC	0.00%
K63AO	61982	BLTT20030605AEC	WENATCHEE	LP NTSC	0.00%
K18AD	33751	BLTT19841203ID	EAST WENATCHEE, ETC.	LP NTSC	0.00%
NEW	167861	BDCCDTT20061030AGJ	WENATCHEE	LP DTV	0.00%
	97593		WENATCHEE	NTSC ALLOT	0.00%
K39DL	67007	BLTTL19980107JB	MOSES LAKE	LP NTSC	0.00%
K33EH	54288	BLTT19951215JA	QUINCY	LP NTSC	0.00%
K21AJ	54286	BLTT19970807JD	QUINCY	LP NTSC	0.00%
K40AE	69502	BLTT19810408JG	CASHMERE	LP NTSC	0.00%
KMYQ	69571	BPCDT20080227AAB	SEATTLE	DTV	0.00%
KTWB-DT	69571	BPCDT19991022ABF	SEATTLE	DTV	0.00%
KTWB-DT	69571	BDSTA20011218ABH	SEATTLE	DTV STA	0.00%

The attached page identifies the considered list of stations when the outgoing interference analysis was executed.



The Green contours are the licensed and on air 64 and 74 dBu analog contours. The Red contour is the proposed 51dBu digital contour. The Yellow contour is the 19 dBu F(50,10) contour that does not cross in to Canadian territory

## STATIONS CONSIDERED IN THE OUTGOING INTERFERENCE STUDY

Callsign	Fac ID	ARN	City	Class
K69BE	35004	BDISTT20061002AEO	ELLENSBURG, ETC.	LP NTSC
DK39DM	10947	BSTA20090724AEE	ELLENSBURG	LP NTSC
K39DM	10947	BPTTL20060127ARI	ELLENSBURG	LP NTSC
K60EB	57522	BLTTL20040616AAS	YAKIMA	LP NTSC
KAZW-LP	12730	BLTTL20040122ABW	YAKIMA	LP NTSC
K63AO	61982	BLTT20030605AEC	WENATCHEE	LP NTSC
K18AD	33751	BLTT19841203ID	EAST WENATCHEE, ETC.	LP NTSC
NEW	167861	BDCCDTT20061030AGJ	WENATCHEE	LP DTV
	97593		WENATCHEE	NTSC ALLOT
K39DL	67007	BLTTL19980107JB	MOSES LAKE	LP NTSC
K33EH	54288	BLTT19951215JA	QUINCY	LP NTSC
K21AJ	54286	BLTT19970807JD	QUINCY	LP NTSC
K40AE	69502	BLTT19810408JG	CASHMERE	LP NTSC
KMYQ	69571	BPCDT20080227AAB	SEATTLE	DTV
KTWB-DT	69571	BPCDT19991022ABF	SEATTLE	DTV
KTWB-DT	69571	BDSTA20011218ABH	SEATTLE	DTV STA
K25FP	41108	BLTTL19971103IP	ELLENSBURG	LP NTSC
K25CH	69575	BDFCDTT20060222ABH	NORTH BEND	LP DTV
K54DU	66989	BPTTL20050330AOZ	RICHLAND	LP NTSC
K39ES	5936	BLTT19980803JH	HEPPNER, ETC.	LP NTSC
K33CJ	49290	BLTTL19980903JE	WASCO/HEPPNER	LP NTSC
K65CH	50572	BLTT20060522ADH	ARLINGTON	LP NTSC
KNDU-DT	12427	BMPCDT20080624AAO	RICHLAND	DTV
KNDU-DT	12427	BDSTA20081107ACM	RICHLAND	DTV STA
KNDU-DT	12427	BDSTA20021107ABM	RICHLAND	DTV STA
K21HL	132732	BLTTL20080819AAV	PATEROS	LP NTSC
K62EM	57509	BLTTL20040616AAP	KENNEWICK & PASCO	LP NTSC
K57HF	57513	BLTTL20040616AAO	KENNEWICK, ETC.	LP NTSC
K24AI	54285	BLTT19840716IA	QUINCY	LP NTSC
K30AJ	61962	BLTTL20020304AGX	WENATCHEE	LP NTSC
K67AD	49288	BDISTT20071121ACT	THE DALLES	LP NTSC
K59EK	34844	BDISTT20071120AET	THE DALLES	LP NTSC
K61BX	21657	BLTT20070622ABB	THE DALLES	LP NTSC
	98470		MORTON	NTSC ALLOT
K28CQ	12431	BLTT19890324IE	HOOD RIVER, ETC.	LP NTSC
K34FK	12430	BLTT19940505JE	HOOD RIVER, ETC.	LP NTSC
K28CQ	12431	BPTT20070822AAQ	HOOD RIVER	LP NTSC
K25CG	33898	BDFCDTT20060301ABQ	ABERDEEN	LP DTV
K29ED	69574	BLTT20071221AAA	EVERETT	LP NTSC
K29ED	69574	BSTA20060602AAA	EVERETT	LP NTSC
K28FT	5914	BLTTL19991018AAC	WALLA WALLA	A NTSC
K25GA	71073	BDFCDTL20090302AAA	REDMOND/PRINEVILLE	LP DTV

K54AO	66785	BLDTT20090403ACD	BREMERTON	LP DTV
K21EK	12728	BLTTL20071108AEM	WALLA WALLA	LP NTSC
K22BI	5909	BLTTL19900813IG	WALLA WALLA	A NTSC
K33EJ	17399	BLTTA20090504ABM	WALLA WALLA	A NTSC
K33EJ	17399	BPTTA20090604ABY	WALLA WALLA	A NTSC
K28IH	130975	BLTT20070502ABX	RAINIER	LP NTSC
K17GV	130973	BLTT20070209ABT	RAINIER	LP NTSC
K21HG	130834	BLTT20070209ABR	RAINIER	LP NTSC
	97943		ROCHESTER	NTSC ALLOT
K69AB	11362	BLTT20030107ABA	MILTON, ETC.	LP NTSC
K23FH	11363	BLTTL20020724AAE	MILTON-FREEWATER	LP NTSC
K67DE	11361	BLTT20030108AAW	MILTON-FREEWATER	LP NTSC
K59BO	50558	BDISTT20060315AET	PENDLETON	LP NTSC
K28GD	50561	BLTT20020419ABE	HEPPNER, ETC.	LP NTSC
K32DE	5938	BLTT19950127JH	PENDLETON, ETC.	LP NTSC
K59EK	34844	BLTT20090617AAM	THE DALLES	LP NTSC
K04PH	130069	BDISDTL20080819ACU	ASTORIA	LP DTV
K26GJ	49733	BDFCDTL20090630AHG	PORTLAND	LP DTV
K25CH	69575	BLTT20031124AHA	CENTRALIA	LP NTSC
K54AO	66785	BDISTTL20051221AJC	BREMERTON	LP NTSC
K24DX	12678	BLTTL19960301JB	PENDLETON, ETC	LP NTSC
KVAL-DT	49766	BLCDT20070226AEB	EUGENE	DTV
KVAL-DT	49766	BDSTA20011130AGI	EUGENE	DTV STA
K25CG	33898	BLTT19890801IB	ABERDEEN	LP NTSC
NEW-DT	162822	BPFS20040930AYS	ENDERBY	DTV
VACANT	179128	BPFS20081119AAN	ENDERBY	DTV
K18DW	71073	BLTTL19990128JD	REDMOND, ETC.	LP NTSC
K26FG	49287	BLTTL19980903JF	WASCO/HEPPNER	LP NTSC
	98099		GRAND FORKS	LP NTSC
K26GV	130223	BLTTL20050419AAX	OMAK	LP NTSC