

TECHNICAL EXHIBIT
AMENDMENT TO PENDING
DTV MAXIMIZATION APPLICATION
STATION KICU-DT
SAN JOSE, CALIFORNIA
CH 36 740 KW (MAX-DA) 684 M

Technical Narrative

This Technical Exhibit supports an application for digital television (DTV) station KICU-DT for its "maximized" DTV operation at San Jose, California. This application requests a construction permit (CP) for KICU-DT digital television operation on channel 36 at San Jose with a directional effective radiated power of 740 kilowatts. KICU-DT intends to use a Dielectric TFU-30DSC/VP-R C170 directional transmitting antenna for digital operation.

Proposed Facilities

Station KICU-DT proposes to operate DTV channel 36 from its authorized DTV construction permit facility. The antenna height above average terrain for the channel 36 DTV operation will be 684 meters. The proposed KICU-DT effective radiated power exceeds the Commission's *Appendix B* allocated maximum effective radiated power in some azimuthal directions for KICU-DT.¹ Therefore, an allocation study was completed to ensure no prohibited interference would occur.

¹ See Seventh Report And Order And Eighth Further Notice Of Proposed Rule Making in the Matter of Advanced Television Systems and their Impact Upon the Existing Television Broadcast Service, MB Docket 87-268, Released August 6, 2007; Adopted August 1, 2007.

The proposed DTV transmitter site will be located atop the KICU-TV tower. Therefore, the proposed site location is:

37° 29' 17" North Latitude
121° 51' 59" West Longitude

A sketch of antenna and pertinent elevations are included as Figure 1. The Appendix contains the vertical and horizontal plane radiation pattern for the proposed antenna system.

Figure 2 is a map showing the proposed DTV predicted coverage contour and the associated DTV appendix B Noise-Limited coverage contour. The extent of the contours have been calculated using the normal FCC prediction method.

Maximum DTV Effective Radiated Power and HAAT

The proposed KICU-DT effective radiated power and antenna height above average terrain exceeds that permitted by Section 73.622(f)(8) of the Commission Rules. However, the proposed KICU-DT service area of 40,465 square kilometers is less than that of another station in the market, KNTV-DT on Channel 12 assigned to San Jose (FCC File Number BLCDDT-20050923AHA) which serves 41,966 square kilometers. Therefore, pursuant to 73.622(f)(5), as the proposed KICU-DT service area remains equal to or less than that of the largest station in the market, the proposed effective radiated power and antenna height above terrain is allowed to exceed the limits defined in Section 73.622(f)(8).

Population Served

The herein proposed KICU-DT "maximized" facility is predicted to serve 6,609,722 persons, post-transition based upon the 2000 Census. KICU-DT's associated Appendix B facility is predicted to serve 6,601,000 persons. Therefore, the herein proposed KICU-DT facility would serve over 100% of KICU-DT's Appendix B population.

Allocation Considerations

The proposed KICU-DT Channel 36 facility meets the requirements of Section 73.623 of the FCC Rules concerning predicted interference to other Appendix B DTV allotments. Longley-Rice interference analyses were conducted pursuant to the requirements of the FCC Rules; OET Bulletin No. 69; and published FCC guidelines for preparation of such interference analyses. The Longley-Rice interference analyses were conducted using the software developed by du Treil, Lundin & Rackley, Inc. based on the FCC published software routines.² Stations selected for analysis were determined pursuant to the distance requirements outlined in the FCC DTV Processing Guidelines Public Notice. The results of the interference analyses for the proposed KICU-DT facility are summarized herein at Figure 3. As indicated therein, the proposed facility will meet the 0.5% criterion outlined in the FCC

² The duTreil, Lundin & Rackley, Inc. DTV interference analysis program is based on the program and procedures outlined by the FCC in the Sixth Report and Order; subsequent Memorandum Opinion and Order; and FCC OET Bulletin No. 69. A nominal grid size resolution of 2 km was employed.

Rules and published guidelines with respect to all considered stations.³

FCC Monitoring Station

The proposed KICU-DT transmitter site is located 28.2 kilometers (17.5 miles) away from the *Livermore, California* FCC monitoring station. If necessary, coordination with the monitoring station is requested to ensure the proposed facility is in compliance with the requirements.

Radiofrequency Electromagnetic Field Exposure

The proposed KICU-DT facilities were evaluated in terms of potential radiofrequency electromagnetic field exposure at ground level to workers and the general public. The radiation center for the proposed KICU-DT antenna is located 173 meters above ground level. The maximum effective radiated power is 740 kilowatts. A "worst case" downward relative field value of 0.1 is assumed for the antenna's downward radiation. The calculated power density at a point 2 meters above ground level is 0.0112 mW/cm². This is less than 5 percent of the Commission's recommended limit of 0.4 mW/cm² for channel 36 for an "uncontrolled" environment.

3 Interference analysis results reflect the net change in interference to a given station considering the interference predicted to occur from all other stations (i.e. "masking") including the allotment facility for KICU-DT. This properly reflects the net interference change for determining compliance with the FCC 0.5% *de minimis* standard.

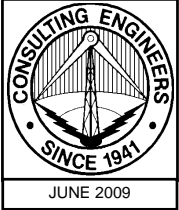
Access to the transmitting site is restricted and appropriately marked with warning signs. As this is a multi-user site an agreement between the stations will control access. In the event that workers or other authorized personnel enter restricted areas or climb the tower, appropriate measures will be taken to assure worker safety with respect to radio frequency radiation exposure. Such measures include reducing the average exposure by spreading out the work over a longer period of time, wearing "accepted" RFR protective clothing and/or RFR exposure monitors or scheduling work when the stations are at reduced power or shut down. The proposed KICU-DT operation appears to be otherwise categorically excluded from environmental processing.

It is noted that this statement only addresses the potential for radiofrequency electromagnetic field exposure. All other aspects of the environmental processing analysis will be or already have been provided to the FCC by the tower owner.

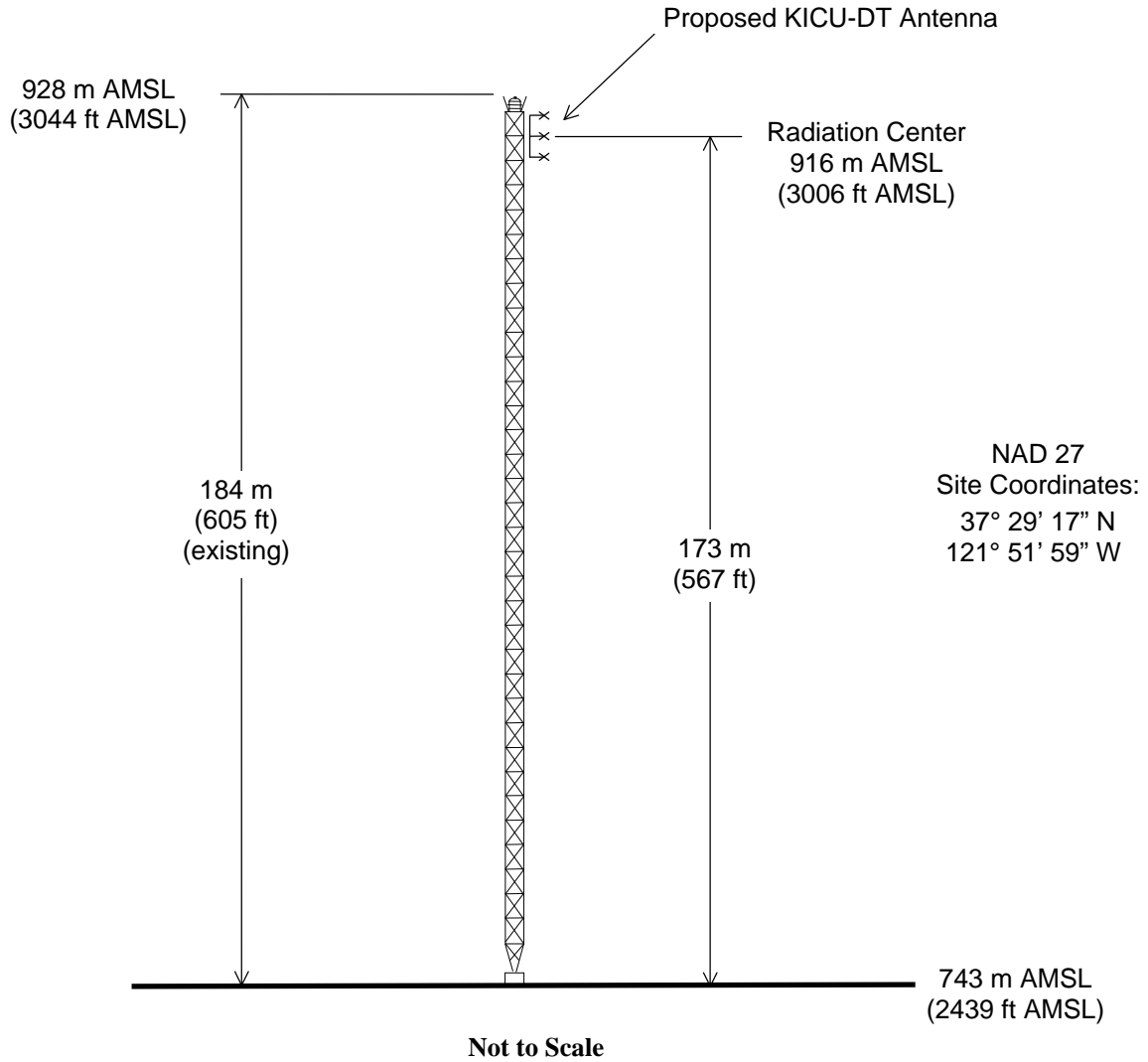
Charles Cooper

du Treil, Lundin & Rackley, Inc.
201 Fletcher Avenue
Sarasota, Florida 32437
941.329.6000

June 9, 2009



ASR: 1019291



ANTENNA AND SUPPORTING STRUCTURE

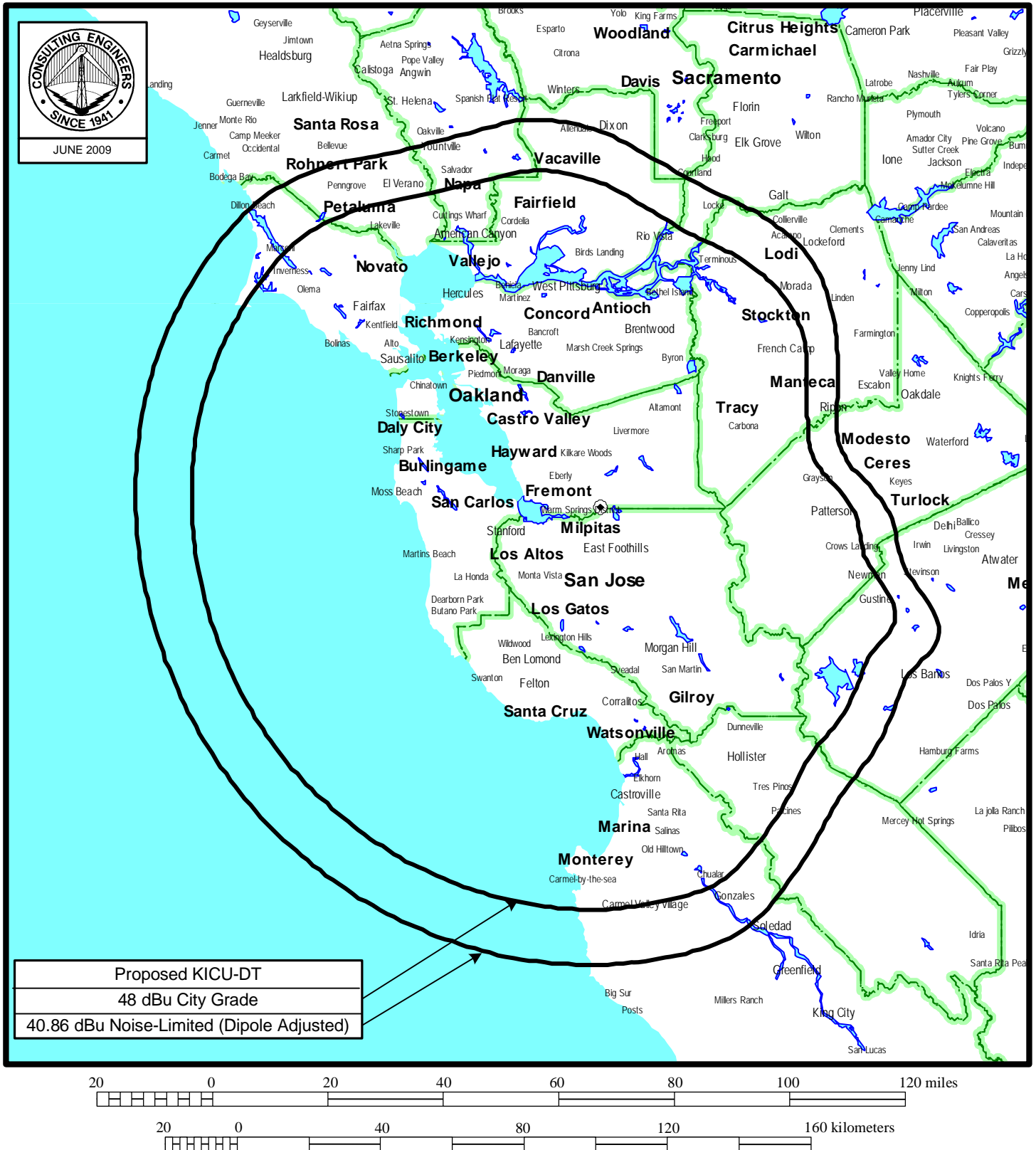
DTV STATION KICU-DT

SAN JOSE, CALIFORNIA

CH 36 740 KW (MAX-DA) 684 M

du Treil, Lundin & Rackley, Inc. Sarasota, Florida

Figure 2



PREDICTED COVERAGE CONTOURS

STATION KICU-DT

SAN JOSE, CALIFORNIA

CH 36 740 KW-DA 684 M

du Treil, Lundin & Rackley, Inc Sarasota, Florida

Figure 3

TW Census data selected 2000
Post Transition Data Base Selected /export/home/cdbb/pt_tvdb.sff

TV INTERFERENCE and SPACING ANALYSIS PROGRAM

Date: 06-14-2009 Time: 11:41:27

Record Selected for Analysis

KICU USERRECORD-01 SAN JOSE CA US
Channel 36 ERP 740. kW HAAT 690. m RCAMSL 00916 m
Latitude 037-29-17 Longitude 0121-51-59
Status APP Zone 2 Border
Dir Antenna Make CDB Model 00000000087510 Beam tilt N Ref Azimuth 0.
Last update Cutoff date Docket
Comments
Applicant

Cell Size for Service Analysis 2.0 km/side

Distance Increments for Longley-Rice Analysis 1.00 km

Facility does not meet maximum height/power limits
Channel 36 ERP = 740.00 HAAT = 690.

Azimuth (Deg)	ERP (kW)	HAAT (m)	41.0 dBu F(50,90) (km)
0.0	99.127	728.8	105.0
45.0	43.337	527.4	88.8
90.0	99.127	318.8	80.2
135.0	650.391	448.6	106.1
180.0	657.778	856.7	127.7
225.0	587.034	904.6	128.2
270.0	653.302	902.8	129.2
315.0	640.409	830.6	126.6

Evaluation toward Class A Stations

Contour overlap to Class A station

KAXT-CA 22 SANTA CLARA-SAN JOSE CA BLTTA 20031010AAT

Contour overlap to Class A station

KJCN-LP 36 PASO ROBLES CA BLTTL 19870602IA

Class A Evaluation Complete

SPACING VIOLATION FOUND BETWEEN STATION

Figure 3

KICU 36 SAN JOSE CA USERRECORD01

and station

SHORT TO: KSPX 29 SACRAMENTO CA BPCT 20031002AEJ
038-15-54 0121-29-24
Req. separation => 24.1 <= 96.6 Actual separation 92.4 Short 4.2(68.3) km

SHORT TO: KMTP-TV 32 SAN FRANCISCO CA BLET 19910910KE
037-45-20 0122-27- 5
Req. separation => 24.1 <= 96.6 Actual separation 59.6 Short 37.0(35.5) km

SHORT TO: KCRA-TV 35 SACRAMENTO CA BLCDT 20040122ADR
038-14-50 0121-30- 3
Req. separation => 24.0 <= 110.0 Actual separation 90.2 Short 19.8(66.2) km

SHORT TO: KCRA-TV 35 SACRAMENTO CA DTVPLN DTVP1280
38 -15-54 121 -29-24
Req. separation => 24.0 <= 110.0 Actual separation 92.4 Short 17.6(68.4) km

SHORT TO: KCRA-TV 35 SACRAMENTO CA BPCDT 20080208AEM
038-15-54 0121-29-24
Req. separation => 24.0 <= 110.0 Actual separation 92.4 Short 17.6(68.4) km

SHORT TO: KICU-TV 36 SAN JOSE CA DTVPLN DTVP1318
37 -29-17 121 -51-59
Req. separation 223.7 Actual separation 0.0 Short 223.7 km

SHORT TO: KFRE-TV 36 SANGER CA BLCDT 20060421AAI
037-04-37 0119-26- 1
Req. separation 223.7 Actual separation 220.5 Short 3.2 km

SHORT TO: KFRE-TV 36 SANGER CA DTVPLN DTVP1319
37 -04-37 119 -26-01
Req. separation 223.7 Actual separation 220.5 Short 3.2 km

SHORT TO: KTXL 40 SACRAMENTO CA BLCT 19851112KI
038-16-18 0121-30-18
Req. separation => 24.1 <= 96.6 Actual separation 92.6 Short 4.0(68.5) km

SHORT TO: KBCW 44 SAN FRANCISCO CA BLCT 19881220KG
037-45-20 0122-27- 5
Req. separation => 24.1 <= 96.6 Actual separation 59.6 Short 37.0(35.5) km

LANDMOBILE SPACING VIOLATIONS FOUND

Figure 3

NONE

Proposed facility is 28.2km from FCC Monitoring station at
Livermore CA
Bearing: 20.7 degrees ERP: 31.41 kW HAAT: 693.7 m
Field = 17.0 mV/m

Proposed facility OK toward West Virginia quiet zone

Proposed facility OK toward Table Mountain

Proposed facility is beyond the Canadian coordination distance

Proposed facility is beyond the Mexican coordination distance

Proposed station is OK toward AM broadcast stations

Start of Interference Analysis

Channel	Call	Proposed Station City/State	ARN
36	KICU	SAN JOSE CA	USERRECORD01

Stations Potentially Affected by Proposed Station

Chan	Call	City/State	Dist(km)	Status	Application	Ref. No.
22	KAXT-CA	SANTA CLARA-SAN JOSE CA	20.8	LIC	BLTTA	-20031010AAT
28	KFTL-CA	SAN FRANCISCO, ETC. CA	54.7	LIC	BLTTA	-20050105ACB
28	KDTV-CA	SANTA ROSA CA	145.4	LIC	BLTTA	-20030212AAT
33	KDJT-CA	SALINAS CA	87.5	APP	BPTTA	-20080804ABR
33	KDJT-CA	SALINAS-MONTEREY, ET CA	50.7	LIC	BLTTT	-19931014JE
33	KDJT-CA	SALINAS/MONTEREY,ETC CA	87.5	APP	BSTA	-20061120ABM
33	KDJT-CA	SALINAS/MONTEREY,ETC CA	87.5	APP	BSTA	-20060822AIZ
35	KCRA-TV	SACRAMENTO CA	90.3	LIC	BLCDD	-20040122ADR
35	KCRA-TV	SACRAMENTO CA	92.5	PLN	DTVPLN	-DTVP1280
35	KCRA-TV	SACRAMENTO CA	92.5	CP	BPCDD	-20080208AEM
36	KJCN-LP	PASO ROBLES CA	260.1	LIC	BLTTT	-19870602IA
36	KFRE-TV	SANGER CA	219.9	LIC	BLCDD	-20060421AAI
36	KFRE-TV	SANGER CA	219.9	PLN	DTVPLN	-DTVP1319

%%%

Analysis of Interference to Affected Station 1

Analysis of current record

Channel	Call	City/State	Application	Ref. No.
22	KAXT-CA	SANTA CLARA-SAN JOSE CA	BLTTA	-20031010AAT

Stations Potentially Affecting This Station

Figure 3

Chan	Call	City/State	Dist(km)	Status	Application	Ref. No.
14	KTNC-TV	CONCORD CA	63.7	PLN	DTVPLN	-DTVP0494
14	KTNC-TV	CONCORD CA	63.7	CP MOD	BMPCDT	-20080222ABB
15	KBSV	CERES CA	50.4	PLN	DTVPLN	-DTVP0518
15	KBSV	CERES CA	39.5	CP MOD	BMPEDT	-20081002ABR
18	KUVS-TV	MODESTO CA	126.6	LIC	BLCDDT	-20020906ABH
18	KUVS-TV	MODESTO CA	126.6	PLN	DTVPLN	-DTVP0629
19	KUVS-TV	MODESTO CA	126.6	LIC	BLCT	-20011012ABT
19	KOFY-TV	SAN FRANCISCO CA	78.0	LIC	BLCDDT	-20000421ABF
19	KBWB	SAN FRANCISCO CA	78.0	PLN	DTVPLN	-DTVP0663
19	KOFY-TV	SAN FRANCISCO CA	78.0	APP	BMPCDT	-20090603AGC
19	KOFY-TV	SAN FRANCISCO CA	78.0	CP	BPCDDT	-20080619ADG
21	KMAX-TV	SACRAMENTO CA	107.2	PLN	DTVPLN	-DTVP0747
21	KMAX-TV	SACRAMENTO CA	104.3	CP	BPCDDT	-20080620ABK
21	KMAX-TV	SACRAMENTO CA	107.2	LIC	BLCDDT	-20041018ABT
22	KRCB	COTATI CA	135.0	LIC	BLET	-20070905AAG
22	KZMM-CA	FRESNO CA	207.6	LIC	BLTTA	-20050525ARK
22	K22FR	SACRAMENTO CA	154.5	LIC	BLTT	-20061204ADU
22	KMBY-LP	SOLEDAD CA	145.0	LIC	BLTTTL	-20080626AAU
22	KDTS-LP	STOCKTON CA	64.6	APP	BDISTTL	-20061121AKD
23	KBSV	CERES CA	76.4	LIC	BLET	-19960319KE
23	KMUV-LP	MONTEREY CA	66.9	LIC	BLTTTL	-20070402KPQ
25	KOVR	STOCKTON CA	104.3	LIC	BLCDDT	-20050516ANE
25	KOVR	STOCKTON CA	104.3	PLN	DTVPLN	-DTVP0911
25	KOVR	STOCKTON CA	104.3	CP	BPCDDT	-20080620ABM
25	KQET	WATSONVILLE CA	66.9	CP	BPET	-20040803ACB
25	KQET	WATSONVILLE CA	66.9	PLN	DTVPLN	-DTVP0912
25	KQET	WATSONVILLE CA	66.9	APP	BFRCDT	-20050811AAH
25	KQET	WATSONVILLE CA	66.9	CP	BPEDT	-20080314ACH
26	KTSF	SAN FRANCISCO CA	72.3	LIC	BLCT	-2507
26	KTFK-TV	STOCKTON CA	104.3	CP MOD	BMPCDDT	-20080616ACI
26	KTFK-TV	STOCKTON CA	104.3	PLN	DTVPLN	-DTVP0943
29	KPIX-TV	SAN FRANCISCO CA	78.0	LIC	BLCDDT	-19990301KF
29	KPIX-TV	SAN FRANCISCO CA	78.0	PLN	DTVPLN	-DTVP1061
29	KPIX-TV	SAN FRANCISCO CA	78.0	CP MOD	BMPCDDT	-20080603AAG
30	KQED	SAN FRANCISCO CA	78.0	CP	BPEDT	-20080314ACI
30	KQED	SAN FRANCISCO CA	78.0	PLN	DTVPLN	-DTVP1098
30	KQED	SAN FRANCISCO CA	78.0	LIC	BLEDT	-20000601ADY
36	KICU-TV	SAN JOSE CA	20.8	PLN	DTVPLN	-DTVP1318
36	KICU	SAN JOSE CA	20.8	APP	USERRECORD-01	

Proposal causes no interference

#####

Analysis of Interference to Affected Station 2

Analysis of current record

Channel	Call	City/State	Application	Ref. No.
28	KFTL-CA	SAN FRANCISCO, ETC. CA	BLTTA	-20050105ACB

Stations Potentially Affecting This Station

Chan	Call	City/State	Dist(km)	Status	Application	Ref. No.
21	KMAX-TV	SACRAMENTO CA	104.7	PLN	DTVPLN	-DTVP0747

Figure 3

21	KMAX-TV	SACRAMENTO CA	102.2	CP	BPCDT	-20080620ABK
21	KMAX-TV	SACRAMENTO CA	104.7	LIC	BLCDT	-20041018ABT
25	KOVR	STOCKTON CA	102.2	LIC	BLCDT	-20050516ANE
25	KOVR	STOCKTON CA	102.2	PLN	DTVPLN	-DTVP0911
25	KOVR	STOCKTON CA	102.2	CP	BPCDT	-20080620ABM
25	KQET	WATSONVILLE CA	132.4	CP	BPET	-20040803ACB
25	KQET	WATSONVILLE CA	132.4	PLN	DTVPLN	-DTVP0912
25	KQET	WATSONVILLE CA	132.4	APP	BFR CET	-20050811AAH
25	KQET	WATSONVILLE CA	132.4	CP	BPEDT	-20080314ACH
26	KTSF	SAN FRANCISCO CA	0.1	LIC	BLCT	-2507
26	KTFK-TV	STOCKTON CA	102.2	CP MOD	BMPCDT	-20080616ACI
26	KTFK-TV	STOCKTON CA	102.2	PLN	DTVPLN	-DTVP0943
27	KTSF	SAN FRANCISCO CA	0.1	LIC	BLCDT	-20050131AOD
27	KTSF	SAN FRANCISCO CA	0.1	PLN	DTVPLN	-DTVP0983
27	KTSF	SAN FRANCISCO CA	0.1	CP	BPCDT	-20080620ALV
28	KKPM-CA	CHICO CA	177.0	LIC	BLTTA	-20040805ABM
28	KBVU	EUREKA CA	362.9	CP MOD	BMPCDT	-20051220AIY
28	KBVU	EUREKA CA	362.9	PLN	DTVPLN	-DTVP1023
28	KDTV-CA	SANTA ROSA CA	108.9	LIC	BLTTA	-20030212AAT
28	KMMW-LP	STOCKTON CA	157.4	CP	BDISTTL	-20060403AOS
28	KMPH-TV	VISALIA CA	334.6	LIC	BLCDT	-20030204AGN
28	KMPH-TV	VISALIA CA	334.6	PLN	DTVPLN	-DTVP1025
29	KSPX	SACRAMENTO CA	104.7	APP	BPCT	-20031002AEJ
29	KPIX-TV	SAN FRANCISCO CA	7.7	LIC	BLCDT	-19990301KF
29	KPIX-TV	SAN FRANCISCO CA	7.7	PLN	DTVPLN	-DTVP1061
29	KPIX-TV	SAN FRANCISCO CA	7.7	CP MOD	BMPCDT	-20080603AAG
30	KQED	SAN FRANCISCO CA	7.7	CP	BPEDT	-20080314ACI
30	KQED	SAN FRANCISCO CA	7.7	PLN	DTVPLN	-DTVP1098
30	KQED	SAN FRANCISCO CA	7.7	LIC	BLEDT	-20000601ADY
31	KSMS-TV	MONTEREY CA	132.4	CP	BPCDT	-20081215ACX
31	KSMS-TV	MONTEREY CA	132.4	PLN	DTVPLN	-DTVP1127
31	KMAX-TV	SACRAMENTO CA	104.7	LIC	BLCT	-20021125AAK
32	KMTP-TV	SAN FRANCISCO CA	7.7	LIC	BLET	-19910910KE
32	KFTY	SANTA ROSA CA	110.5	CP	BPCDT	-20080313ACF
32	KFTY	SANTA ROSA CA	110.5	PLN	DTVPLN	-DTVP1172
35	KCRA-TV	SACRAMENTO CA	102.7	LIC	BLCDT	-20040122ADR
35	KCRA-TV	SACRAMENTO CA	104.7	PLN	DTVPLN	-DTVP1280
35	KCRA-TV	SACRAMENTO CA	104.7	CP	BPCDT	-20080208AEM
36	KICU-TV	SAN JOSE CA	54.7	PLN	DTVPLN	-DTVP1318
42	KTNC-TV	CONCORD CA	52.3	LIC	BLCT	-19830630KF
43	NEW	SACRAMENTO CA	139.7	APP	BNPEDT	-20030922AFV
43	KCSM-TV	SAN MATEO CA	7.7	PLN	DTVPLN	-DTVP1530
43	KCSM-TV	SAN MATEO CA	7.7	CP	BPEDT	-20080825AAV
43	KCSM-TV	SAN MATEO CA	7.7	LIC	BLEDT	-20030822AFZ
36	KICU	SAN JOSE CA	54.7	APP	USERRECORD-01	

Proposal causes no interference

#####

Analysis of Interference to Affected Station 3

Analysis of current record

Channel	Call	City/State	Application	Ref. No.
28	KDTV-CA	SANTA ROSA CA	BLTTA	-20030212AAT

Figure 3

Stations Potentially Affecting This Station

Chan	Call	City/State	Dist(km)	Status	Application	Ref. No.
21	KMAX-TV	SACRAMENTO CA	107.1	PLN	DTVPLN	-DTVP0747
21	KMAX-TV	SACRAMENTO CA	107.5	CP	BPCDT	-20080620ABK
21	KMAX-TV	SACRAMENTO CA	107.1	LIC	BLCDDT	-20041018ABT
25	KOVR	STOCKTON CA	107.5	LIC	BLCDDT	-20050516ANE
25	KOVR	STOCKTON CA	107.5	PLN	DTVPLN	-DTVP0911
25	KOVR	STOCKTON CA	107.5	CP	BPCDT	-20080620ABM
26	KTFK-TV	STOCKTON CA	107.5	CP MOD	BMPCDDT	-20080616ACI
26	KTFK-TV	STOCKTON CA	107.5	PLN	DTVPLN	-DTVP0943
27	KTSF	SAN FRANCISCO CA	108.9	LIC	BLCDDT	-20050131AOD
27	KTSF	SAN FRANCISCO CA	108.9	PLN	DTVPLN	-DTVP0983
27	KTSF	SAN FRANCISCO CA	108.9	CP	BPCDT	-20080620ALV
28	KKPM-CA	CHICO CA	92.0	CP	BDFCDTA	-20081031ABI
28	KKPM-CA	CHICO CA	92.0	LIC	BLTTA	-20040805ABM
28	KBVU	EUREKA CA	257.8	CP MOD	BMPCDDT	-20051220AIY
28	KBVU	EUREKA CA	257.8	PLN	DTVPLN	-DTVP1023
28	KFTL-CA	SAN FRANCISCO, ETC. CA	108.9	LIC	BLTTA	-20050105ACB
28	KMMW-LP	STOCKTON CA	175.2	CP	BDISTTL	-20060403AOS
29	KSPX	SACRAMENTO CA	107.1	APP	BPCT	-20031002AEJ
29	KPIX-TV	SAN FRANCISCO CA	101.1	LIC	BLCDDT	-19990301KF
29	KPIX-TV	SAN FRANCISCO CA	101.1	PLN	DTVPLN	-DTVP1061
29	KPIX-TV	SAN FRANCISCO CA	101.2	CP MOD	BMPCDDT	-20080603AAG
30	KQED	SAN FRANCISCO CA	101.2	CP	BPEDT	-20080314ACI
30	KQED	SAN FRANCISCO CA	101.2	PLN	DTVPLN	-DTVP1098
30	KQED	SAN FRANCISCO CA	101.2	LIC	BLEDT	-20000601ADY
32	KFTY	SANTA ROSA CA	2.0	CP	BPCDT	-20080313ACF
32	KFTY	SANTA ROSA CA	2.0	PLN	DTVPLN	-DTVP1172
35	KCRA-TV	SACRAMENTO CA	107.1	LIC	BLCDDT	-20040122ADR
35	KCRA-TV	SACRAMENTO CA	107.1	PLN	DTVPLN	-DTVP1280
35	KCRA-TV	SACRAMENTO CA	107.1	CP	BPCDT	-20080208AEM
36	KICU-TV	SAN JOSE CA	145.4	PLN	DTVPLN	-DTVP1318
42	KTNC-TV	CONCORD CA	105.4	LIC	BLCT	-19830630KF
43	NEW	SACRAMENTO CA	128.3	APP	BNPEDT	-20030922AFV
43	KCSM-TV	SAN MATEO CA	101.2	PLN	DTVPLN	-DTVP1530
43	KCSM-TV	SAN MATEO CA	101.2	CP	BPEDT	-20080825AAV
43	KCSM-TV	SAN MATEO CA	101.2	LIC	BLEDT	-20030822AFZ
43	K43AF	UKIAH CA	65.9	LIC	BLTT	-19830125IL
36	KICU	SAN JOSE CA	145.4	APP	USERRECORD-01	

Proposed station is beyond the site to
nearest cell evaluation distance

#####

Analysis of Interference to Affected Station 4

Analysis of current record

Channel	Call	City/State	Application	Ref. No.
33	KDJT-CA	SALINAS CA	BPTTA	-20080804ABR

Stations Potentially Affecting This Station

Chan	Call	City/State	Dist(km)	Status	Application	Ref. No.
------	------	------------	----------	--------	-------------	----------

Figure 3

25	KQET	WATSONVILLE CA	0.0	PLN	DTVPLN	-DTVP0912
25	KQET	WATSONVILLE CA	0.0	APP	BFCRCET	-20050811AAH
25	KQET	WATSONVILLE CA	0.0	CP	BPEDT	-20080314ACH
26	KTSF	SAN FRANCISCO CA	132.3	LIC	BLCT	-2507
29	KPIX-TV	SAN FRANCISCO CA	139.3	LIC	BLCDDT	-19990301KF
29	KPIX-TV	SAN FRANCISCO CA	139.3	PLN	DTVPLN	-DTVP1061
29	KPIX-TV	SAN FRANCISCO CA	139.3	CP MOD	BMPCDDT	-20080603AAG
30	KQED	SAN FRANCISCO CA	139.3	CP	BPEDT	-20080314ACI
30	KQED	SAN FRANCISCO CA	139.3	PLN	DTVPLN	-DTVP1098
30	KQED	SAN FRANCISCO CA	139.3	LIC	BLEDT	-20000601ADY
31	KSMS-TV	MONTEREY CA	0.0	CP	BPCDDT	-20081215ACX
31	KSMS-TV	MONTEREY CA	0.0	PLN	DTVPLN	-DTVP1127
32	KION-TV	MONTEREY CA	26.8	LIC	BLCDDT	-20030604ACO
32	KION-TV	MONTEREY CA	26.8	PLN	DTVPLN	-DTVP1171
33	KBAK-TV	BAKERSFIELD CA	298.9	PLN	DTVPLN	-DTVP1208
33	KBAK-TV	BAKERSFIELD CA	298.9	LIC	BLCDDT	-20060628ABK
33	KCSO-LP	SACRAMENTO CA	166.3	LIC	BLTTTL	-20020503AAV
33	KMTP-TV	SAN FRANCISCO CA	139.3	CP	BPEDT	-20000501AGF
33	KMTP-TV	SAN FRANCISCO CA	139.3	PLN	DTVPLN	-DTVP1209
36	KICU-TV	SAN JOSE CA	87.5	PLN	DTVPLN	-DTVP1318
41	KKPX	SAN JOSE CA	132.4	LIC	BLCDDT	-20021108ABD
41	KKPX	SAN JOSE CA	132.4	PLN	DTVPLN	-DTVP1462
48	KSTS	SAN JOSE CA	88.8	LIC	BLCT	-19990721KE
36	KICU	SAN JOSE CA	87.5	APP	USERRECORD-01	

Proposed station is beyond the site to
nearest cell evaluation distance

#####

Analysis of Interference to Affected Station 5

Analysis of current record

Channel	Call	City/State	Application Ref. No.
33	KDJT-CA	SALINAS-MONTEREY, ET CA	BLTTTL -19931014JE

Stations Potentially Affecting This Station

Chan	Call	City/State	Dist(km)	Status	Application Ref. No.
25	KOVR	STOCKTON CA	135.3	LIC	BLCDDT -20050516ANE
25	KOVR	STOCKTON CA	135.3	PLN	DTVPLN -DTVP0911
25	KOVR	STOCKTON CA	135.3	CP	BPCDDT -20080620ABM
25	KQET	WATSONVILLE CA	39.0	PLN	DTVPLN -DTVP0912
25	KQET	WATSONVILLE CA	38.9	APP	BFCRCET -20050811AAH
25	KQET	WATSONVILLE CA	38.9	CP	BPEDT -20080314ACH
26	KTSF	SAN FRANCISCO CA	93.4	LIC	BLCT -2507
26	KTFK-TV	STOCKTON CA	135.3	CP MOD	BMPCDDT -20080616ACI
26	KTFK-TV	STOCKTON CA	135.3	PLN	DTVPLN -DTVP0943
29	KPIX-TV	SAN FRANCISCO CA	100.4	LIC	BLCDDT -19990301KF
29	KPIX-TV	SAN FRANCISCO CA	100.4	PLN	DTVPLN -DTVP1061
29	KPIX-TV	SAN FRANCISCO CA	100.3	CP MOD	BMPCDDT -20080603AAG
30	KQED	SAN FRANCISCO CA	100.3	CP	BPEDT -20080314ACI
30	KQED	SAN FRANCISCO CA	100.3	PLN	DTVPLN -DTVP1098
30	KQED	SAN FRANCISCO CA	100.3	LIC	BLEDT -20000601ADY
31	KSMS-TV	MONTEREY CA	38.9	CP	BPCDDT -20081215ACX

Figure 3

31	KSMS-TV	MONTEREY CA	38.9	PLN	DTVPLN	-DTVP1127
32	KION-TV	MONTEREY CA	57.5	LIC	BLCDDT	-20030604ACO
32	KION-TV	MONTEREY CA	57.5	PLN	DTVPLN	-DTVP1171
32	KMTP-TV	SAN FRANCISCO CA	100.4	LIC	BLET	-19910910KE
33	KBAK-TV	BAKERSFIELD CA	334.2	PLN	DTVPLN	-DTVP1208
33	KBAK-TV	BAKERSFIELD CA	334.2	LIC	BLCDDT	-20060628ABK
33	KCSO-LP	SACRAMENTO CA	150.6	LIC	BLTTTL	-20020503AAV
33	KMTP-TV	SAN FRANCISCO CA	100.3	CP	BPEDT	-20000501AGF
33	KMTP-TV	SAN FRANCISCO CA	100.4	PLN	DTVPLN	-DTVP1209
34	KFSF-TV	VALLEJO CA	100.3	LIC	BLCDDT	-20030620ABV
34	KFSF-TV	VALLEJO CA	100.3	PLN	DTVPLN	-DTVP1244
34	KFSF-TV	VALLEJO CA	100.3	CP	BPCDDT	-20081031AAE
35	KCRA-TV	SACRAMENTO CA	136.0	LIC	BLCDDT	-20040122ADR
35	KCRA-TV	SACRAMENTO CA	138.2	PLN	DTVPLN	-DTVP1280
35	KCRA-TV	SACRAMENTO CA	138.2	CP	BPCDDT	-20080208AEM
36	KICU-TV	SAN JOSE CA	50.7	PLN	DTVPLN	-DTVP1318
40	KTXL	SACRAMENTO CA	138.7	CP MOD	BMPCDDT	-20080620ADJ
40	KTXL	SACRAMENTO CA	138.7	PLN	DTVPLN	-DTVP1425
41	KKPX	SAN JOSE CA	93.5	LIC	BLCDDT	-20021108ABD
41	KKPX	SAN JOSE CA	93.5	PLN	DTVPLN	-DTVP1462
47	KTLN-TV	NOVATO CA	143.6	PLN	DTVPLN	-DTVP1668
47	KTLN-TV	NOVATO CA	143.6	CP	BPCDDT	-19991026ABE
48	KSPX	SACRAMENTO CA	138.2	LIC	BLCDDT	-20050110ABB
48	KSPX	SACRAMENTO CA	138.2	PLN	DTVPLN	-DTVP1700
48	KSTS	SAN JOSE CA	52.0	LIC	BLCT	-19990721KE
36	KICU	SAN JOSE CA	50.7	APP	USERRECORD-01	

Proposed station is beyond the site to
nearest cell evaluation distance

#####

Analysis of Interference to Affected Station 6

Analysis of current record

Channel	Call	City/State	Application Ref. No.
33	KDJT-CA	SALINAS/MONTEREY,ETC CA	BSTA -20061120ABM

Stations Potentially Affecting This Station

Chan	Call	City/State	Dist(km)	Status	Application Ref. No.
25	KQET	WATSONVILLE CA	0.0	PLN	DTVPLN -DTVP0912
25	KQET	WATSONVILLE CA	0.0	APP	BFRCDT -20050811AAH
25	KQET	WATSONVILLE CA	0.0	CP	BPEDT -20080314ACH
26	KTSF	SAN FRANCISCO CA	132.3	LIC	BLCT -2507
29	KPIX-TV	SAN FRANCISCO CA	139.3	LIC	BLCDDT -19990301KF
29	KPIX-TV	SAN FRANCISCO CA	139.3	PLN	DTVPLN -DTVP1061
29	KPIX-TV	SAN FRANCISCO CA	139.3	CP MOD	BMPCDDT -20080603AAG
30	KQED	SAN FRANCISCO CA	139.3	CP	BPEDT -20080314ACI
30	KQED	SAN FRANCISCO CA	139.3	PLN	DTVPLN -DTVP1098
30	KQED	SAN FRANCISCO CA	139.3	LIC	BLEDT -20000601ADY
31	KSMS-TV	MONTEREY CA	0.0	CP	BPCDDT -20081215ACX
31	KSMS-TV	MONTEREY CA	0.0	PLN	DTVPLN -DTVP1127
32	KION-TV	MONTEREY CA	26.8	LIC	BLCDDT -20030604ACO
32	KION-TV	MONTEREY CA	26.8	PLN	DTVPLN -DTVP1171

Figure 3

33	KBAK-TV	BAKERSFIELD CA	298.9	PLN	DTVPLN	-DTVP1208
33	KBAK-TV	BAKERSFIELD CA	298.9	LIC	BLCDDT	-20060628ABK
33	KCSO-LP	SACRAMENTO CA	166.3	LIC	BLTTTL	-20020503AAV
33	KMTP-TV	SAN FRANCISCO CA	139.3	CP	BPEDT	-20000501AGF
33	KMTP-TV	SAN FRANCISCO CA	139.3	PLN	DTVPLN	-DTVP1209
36	KICU-TV	SAN JOSE CA	87.5	PLN	DTVPLN	-DTVP1318
41	KKPX	SAN JOSE CA	132.4	LIC	BLCDDT	-20021108ABD
41	KKPX	SAN JOSE CA	132.4	PLN	DTVPLN	-DTVP1462
48	KSTS	SAN JOSE CA	88.8	LIC	BLCT	-19990721KE
36	KICU	SAN JOSE CA	87.5	APP	USERRECORD-01	

Proposed station is beyond the site to
nearest cell evaluation distance

#####

Analysis of Interference to Affected Station 7

Analysis of current record

Channel	Call	City/State	Application Ref. No.
33	KDJT-CA	SALINAS/MONTEREY,ETC CA	BSTA -20060822AIZ

Stations Potentially Affecting This Station

Chan	Call	City/State	Dist(km)	Status	Application Ref. No.
25	KQET	WATSONVILLE CA	0.0	PLN	DTVPLN -DTVP0912
25	KQET	WATSONVILLE CA	0.0	APP	BFRDET -20050811AAH
25	KQET	WATSONVILLE CA	0.0	CP	BPEDT -20080314ACH
26	KTSF	SAN FRANCISCO CA	132.3	LIC	BLCT -2507
29	KPIX-TV	SAN FRANCISCO CA	139.3	LIC	BLCDDT -19990301KF
29	KPIX-TV	SAN FRANCISCO CA	139.3	PLN	DTVPLN -DTVP1061
29	KPIX-TV	SAN FRANCISCO CA	139.3	CP MOD	BMPCDDT -20080603AAG
30	KQED	SAN FRANCISCO CA	139.3	CP	BPEDT -20080314ACI
30	KQED	SAN FRANCISCO CA	139.3	PLN	DTVPLN -DTVP1098
30	KQED	SAN FRANCISCO CA	139.3	LIC	BLEDT -20000601ADY
31	KSMS-TV	MONTEREY CA	0.0	CP	BPCDDT -20081215ACX
31	KSMS-TV	MONTEREY CA	0.0	PLN	DTVPLN -DTVP1127
32	KION-TV	MONTEREY CA	26.8	LIC	BLCDDT -20030604ACO
32	KION-TV	MONTEREY CA	26.8	PLN	DTVPLN -DTVP1171
33	KBAK-TV	BAKERSFIELD CA	298.9	PLN	DTVPLN -DTVP1208
33	KBAK-TV	BAKERSFIELD CA	298.9	LIC	BLCDDT -20060628ABK
33	KCSO-LP	SACRAMENTO CA	166.3	LIC	BLTTTL -20020503AAV
33	KMTP-TV	SAN FRANCISCO CA	139.3	CP	BPEDT -20000501AGF
33	KMTP-TV	SAN FRANCISCO CA	139.3	PLN	DTVPLN -DTVP1209
36	KICU-TV	SAN JOSE CA	87.5	PLN	DTVPLN -DTVP1318
41	KKPX	SAN JOSE CA	132.4	LIC	BLCDDT -20021108ABD
41	KKPX	SAN JOSE CA	132.4	PLN	DTVPLN -DTVP1462
48	KSTS	SAN JOSE CA	88.8	LIC	BLCT -19990721KE
36	KICU	SAN JOSE CA	87.5	APP	USERRECORD-01

Proposed station is beyond the site to
nearest cell evaluation distance

#####

Figure 3

Analysis of Interference to Affected Station 8

Analysis of current record

Channel	Call	City/State	Application	Ref. No.
35	KCRA-TV	SACRAMENTO CA	BLCDDT	-20040122ADR

Stations Potentially Affecting This Station

Chan	Call	City/State	Dist(km)	Status	Application	Ref. No.
34	KGPE	FRESNO CA	224.6	LIC	BLCDDT	-20030702ABJ
34	KGPE	FRESNO CA	224.6	PLN	DTVPLN	-DTVP1241
34	KFSF-TV	VALLEJO CA	99.6	LIC	BLCDDT	-20030620ABV
34	KFSF-TV	VALLEJO CA	99.6	PLN	DTVPLN	-DTVP1244
34	KFSF-TV	VALLEJO CA	99.6	CP	BPCDDT	-20081031AAE
36	KICU-TV	SAN JOSE CA	90.3	PLN	DTVPLN	-DTVP1318
36	KFRE-TV	SANGER CA	223.6	LIC	BLCDDT	-20060421AAI
36	KFRE-TV	SANGER CA	223.6	PLN	DTVPLN	-DTVP1319
36	KICU	SAN JOSE CA	90.3	APP	USERRECORD-01	

Total scenarios = 3

Result key: 1
Scenario 1 Affected station 8
Before Analysis

Results for: 35A CA SACRAMENTO BLCDDT 20040122ADR LIC
HAAT 462.0 m, ATV ERP 1000.0 kW

	POPULATION	AREA (sq km)
within Noise Limited Contour	9065362	39559.8
not affected by terrain losses	5609554	34069.1
lost to NTSC IX	0	0.0
lost to additional IX by ATV	775548	881.9
lost to ATV IX only	775548	881.9
lost to all IX	775548	881.9

Potential Interfering Stations Included in above Scenario 1

34A CA VALLEJO	BLCDDT	20030620ABV	LIC
36A CA SAN JOSE	DTVPLN	DTVP1318	PLN

After Analysis

Results for: 35A CA SACRAMENTO BLCDDT 20040122ADR LIC
HAAT 462.0 m, ATV ERP 1000.0 kW

	POPULATION	AREA (sq km)
within Noise Limited Contour	9065362	39559.8
not affected by terrain losses	5609554	34069.1
lost to NTSC IX	0	0.0
lost to additional IX by ATV	775578	885.8
lost to ATV IX only	775578	885.8
lost to all IX	775578	885.8

Potential Interfering Stations Included in above Scenario 1

Figure 3

34A CA VALLEJO BLCDT 20030620ABV LIC
 36A CA SAN JOSE USERRECORD01 APP

Percent new IX = 0.0006%

Result key: 2
 Scenario 2 Affected station 8
 Before Analysis

Results for: 35A CA SACRAMENTO BLCDT 20040122ADR LIC
 HAAT 462.0 m, ATV ERP 1000.0 kW

	POPULATION	AREA (sq km)
within Noise Limited Contour	9065362	39559.8
not affected by terrain losses	5609554	34069.1
lost to NTSC IX	0	0.0
lost to additional IX by ATV	775548	881.9
lost to ATV IX only	775548	881.9
lost to all IX	775548	881.9

Potential Interfering Stations Included in above Scenario 2

34A CA VALLEJO DTVPLN DTVP1244 PLN
 36A CA SAN JOSE DTVPLN DTVP1318 PLN

After Analysis

Results for: 35A CA SACRAMENTO BLCDT 20040122ADR LIC
 HAAT 462.0 m, ATV ERP 1000.0 kW

	POPULATION	AREA (sq km)
within Noise Limited Contour	9065362	39559.8
not affected by terrain losses	5609554	34069.1
lost to NTSC IX	0	0.0
lost to additional IX by ATV	775578	885.8
lost to ATV IX only	775578	885.8
lost to all IX	775578	885.8

Potential Interfering Stations Included in above Scenario 2

34A CA VALLEJO DTVPLN DTVP1244 PLN
 36A CA SAN JOSE USERRECORD01 APP

Percent new IX = 0.0006%

Result key: 3
 Scenario 3 Affected station 8
 Before Analysis

Results for: 35A CA SACRAMENTO BLCDT 20040122ADR LIC
 HAAT 462.0 m, ATV ERP 1000.0 kW

	POPULATION	AREA (sq km)
within Noise Limited Contour	9065362	39559.8
not affected by terrain losses	5609554	34069.1
lost to NTSC IX	0	0.0
lost to additional IX by ATV	793348	969.6
lost to ATV IX only	793348	969.6
lost to all IX	793348	969.6

Figure 3

Potential Interfering Stations Included in above Scenario 3

34A CA VALLEJO	BPCDT	20081031AAE	CP
36A CA SAN JOSE	DTVPLN	DTVP1318	PLN

After Analysis

Results for: 35A CA SACRAMENTO BLCDT 20040122ADR LIC
HAAT 462.0 m, ATV ERP 1000.0 kW

	POPULATION	AREA (sq km)
within Noise Limited Contour	9065362	39559.8
not affected by terrain losses	5609554	34069.1
lost to NTSC IX	0	0.0
lost to additional IX by ATV	793378	973.6
lost to ATV IX only	793378	973.6
lost to all IX	793378	973.6

Potential Interfering Stations Included in above Scenario 3

34A CA VALLEJO	BPCDT	20081031AAE	CP
36A CA SAN JOSE	USERRECORD01		APP

Percent new IX = 0.0006%

Worst case new IX 0.0006% Scenario 3

#####

Analysis of Interference to Affected Station 9

Analysis of current record

Channel	Call	City/State	Application Ref. No.
35	KCRA-TV	SACRAMENTO CA	DTVPLN -DTVP1280

Stations Potentially Affecting This Station

Chan	Call	City/State	Dist(km)	Status	Application Ref. No.
34	KGPE	FRESNO CA	225.0	LIC	BLCDT -20030702ABJ
34	KGPE	FRESNO CA	225.0	PLN	DTVPLN -DTVP1241
34	KFSF-TV	VALLEJO CA	101.5	LIC	BLCDT -20030620ABV
34	KFSF-TV	VALLEJO CA	101.5	PLN	DTVPLN -DTVP1244
34	KFSF-TV	VALLEJO CA	101.5	CP	BPCDT -20081031AAE
36	KICU-TV	SAN JOSE CA	92.5	PLN	DTVPLN -DTVP1318
36	KFRE-TV	SANGER CA	224.0	LIC	BLCDT -20060421AAI
36	KFRE-TV	SANGER CA	224.0	PLN	DTVPLN -DTVP1319
36	KICU	SAN JOSE CA	92.5	APP	USERRECORD-01

Total scenarios = 3

Result key: 4

Scenario 1 Affected station 9

Before Analysis

Results for: 35A CA SACRAMENTO DTVPLN DTVP1280 PLN

Figure 3

HAAT 591.0 m, ATV ERP 1000.0 kW

	POPULATION	AREA (sq km)
within Noise Limited Contour	9710741	45895.4
not affected by terrain losses	6106488	38950.1
lost to NTSC IX	0	0.0
lost to additional IX by ATV	1082406	1066.0
lost to ATV IX only	1082406	1066.0
lost to all IX	1082406	1066.0

Potential Interfering Stations Included in above Scenario 1

34A CA VALLEJO	BLCDT	20030620ABV	LIC
36A CA SAN JOSE	DTVPLN	DTVPL318	PLN

After Analysis

Results for: 35A CA SACRAMENTO DTVP1LN DTVP1280 PLN
HAAT 591.0 m, ATV ERP 1000.0 kW

	POPULATION	AREA (sq km)
within Noise Limited Contour	9710741	45895.4
not affected by terrain losses	6106488	38950.1
lost to NTSC IX	0	0.0
lost to additional IX by ATV	1084053	1074.1
lost to ATV IX only	1084053	1074.1
lost to all IX	1084053	1074.1

Potential Interfering Stations Included in above Scenario 1

34A CA VALLEJO	BLCDT	20030620ABV	LIC
36A CA SAN JOSE	USERRECORD01		APP

Percent new IX = 0.0328%

Result key:	5		
Scenario	2	Affected station	9
Before Analysis			

Results for: 35A CA SACRAMENTO DTVP1LN DTVP1280 PLN
HAAT 591.0 m, ATV ERP 1000.0 kW

	POPULATION	AREA (sq km)
within Noise Limited Contour	9710741	45895.4
not affected by terrain losses	6106488	38950.1
lost to NTSC IX	0	0.0
lost to additional IX by ATV	1082406	1066.0
lost to ATV IX only	1082406	1066.0
lost to all IX	1082406	1066.0

Potential Interfering Stations Included in above Scenario 2

34A CA VALLEJO	DTVPLN	DTVP1244	PLN
36A CA SAN JOSE	DTVPLN	DTVP1318	PLN

After Analysis

Results for: 35A CA SACRAMENTO DTVP1LN DTVP1280 PLN
HAAT 591.0 m, ATV ERP 1000.0 kW

POPULATION AREA (sq km)

Figure 3

within Noise Limited Contour	9710741	45895.4
not affected by terrain losses	6106488	38950.1
lost to NTSC IX	0	0.0
lost to additional IX by ATV	1084053	1074.1
lost to ATV IX only	1084053	1074.1
lost to all IX	1084053	1074.1

Potential Interfering Stations Included in above Scenario 2

34A CA VALLEJO	DTVPLN	DTVP1244	PLN
36A CA SAN JOSE	USERRECORD01		APP

Percent new IX = 0.0328%

Result key: 6

Scenario 3 Affected station 9

Before Analysis

Results for: 35A CA SACRAMENTO DTVPLN DTVP1280 PLN

HAAT 591.0 m, ATV ERP 1000.0 kW

	POPULATION	AREA (sq km)
within Noise Limited Contour	9710741	45895.4
not affected by terrain losses	6106488	38950.1
lost to NTSC IX	0	0.0
lost to additional IX by ATV	1106184	1158.9
lost to ATV IX only	1106184	1158.9
lost to all IX	1106184	1158.9

Potential Interfering Stations Included in above Scenario 3

34A CA VALLEJO	BPCDT	20081031AAE	CP
36A CA SAN JOSE	DTVPLN	DTVP1318	PLN

After Analysis

Results for: 35A CA SACRAMENTO DTVPLN DTVP1280 PLN

HAAT 591.0 m, ATV ERP 1000.0 kW

	POPULATION	AREA (sq km)
within Noise Limited Contour	9710741	45895.4
not affected by terrain losses	6106488	38950.1
lost to NTSC IX	0	0.0
lost to additional IX by ATV	1107831	1167.0
lost to ATV IX only	1107831	1167.0
lost to all IX	1107831	1167.0

Potential Interfering Stations Included in above Scenario 3

34A CA VALLEJO	BPCDT	20081031AAE	CP
36A CA SAN JOSE	USERRECORD01		APP

Percent new IX = 0.0329%

Worst case new IX 0.0329% Scenario 3

#####

Figure 3

Analysis of Interference to Affected Station 10

Analysis of current record

Channel	Call	City/State	Application	Ref. No.
35	KCRA-TV	SACRAMENTO CA	BPCDT	-20080208AEM

Stations Potentially Affecting This Station

Chan	Call	City/State	Dist(km)	Status	Application	Ref. No.
34	KGPE	FRESNO CA	225.0	LIC	BLCDT	-20030702ABJ
34	KGPE	FRESNO CA	225.0	PLN	DTVPLN	-DTVP1241
34	KFSF-TV	VALLEJO CA	101.5	LIC	BLCDT	-20030620ABV
34	KFSF-TV	VALLEJO CA	101.5	PLN	DTVPLN	-DTVP1244
34	KFSF-TV	VALLEJO CA	101.5	CP	BPCDT	-20081031AAE
36	KICU-TV	SAN JOSE CA	92.5	PLN	DTVPLN	-DTVP1318
36	KFRE-TV	SANGER CA	224.0	LIC	BLCDT	-20060421AAI
36	KFRE-TV	SANGER CA	224.0	PLN	DTVPLN	-DTVP1319
36	KICU	SAN JOSE CA	92.5	APP	USERRECORD-01	

Total scenarios = 3

Result key: 7
Scenario 1 Affected station 10
Before Analysis

Results for: 35A CA SACRAMENTO BPCDT 20080208AEM CP

HAAT 579.0 m, ATV ERP 1000.0 kW

	POPULATION	AREA (sq km)
within Noise Limited Contour	9653589	45233.3
not affected by terrain losses	6071463	38497.9
lost to NTSC IX	0	0.0
lost to additional IX by ATV	1087579	1082.2
lost to ATV IX only	1087579	1082.2
lost to all IX	1087579	1082.2

Potential Interfering Stations Included in above Scenario 1

34A CA VALLEJO	BLCDT	20030620ABV	LIC
36A CA SAN JOSE	DTVPLN	DTVP1318	PLN

After Analysis

Results for: 35A CA SACRAMENTO BPCDT 20080208AEM CP

HAAT 579.0 m, ATV ERP 1000.0 kW

	POPULATION	AREA (sq km)
within Noise Limited Contour	9653589	45233.3
not affected by terrain losses	6071463	38497.9
lost to NTSC IX	0	0.0
lost to additional IX by ATV	1087589	1090.2
lost to ATV IX only	1087589	1090.2
lost to all IX	1087589	1090.2

Potential Interfering Stations Included in above Scenario 1

34A CA VALLEJO	BLCDT	20030620ABV	LIC
----------------	-------	-------------	-----

Figure 3

36A CA SAN JOSE USERRECORD01 APP

Percent new IX = 0.0002%

Result key: 8

Scenario 2 Affected station 10

Before Analysis

Results for: 35A CA SACRAMENTO BPCDT 20080208AEM CP

HAAT 579.0 m, ATV ERP 1000.0 kW

	POPULATION	AREA (sq km)
within Noise Limited Contour	9653589	45233.3
not affected by terrain losses	6071463	38497.9
lost to NTSC IX	0	0.0
lost to additional IX by ATV	1087579	1082.2
lost to ATV IX only	1087579	1082.2
lost to all IX	1087579	1082.2

Potential Interfering Stations Included in above Scenario 2

34A CA VALLEJO DTVPLN DTVP1244 PLN

36A CA SAN JOSE DTVPLN DTVP1318 PLN

After Analysis

Results for: 35A CA SACRAMENTO BPCDT 20080208AEM CP

HAAT 579.0 m, ATV ERP 1000.0 kW

	POPULATION	AREA (sq km)
within Noise Limited Contour	9653589	45233.3
not affected by terrain losses	6071463	38497.9
lost to NTSC IX	0	0.0
lost to additional IX by ATV	1087589	1090.2
lost to ATV IX only	1087589	1090.2
lost to all IX	1087589	1090.2

Potential Interfering Stations Included in above Scenario 2

34A CA VALLEJO DTVPLN DTVP1244 PLN

36A CA SAN JOSE USERRECORD01 APP

Percent new IX = 0.0002%

Result key: 9

Scenario 3 Affected station 10

Before Analysis

Results for: 35A CA SACRAMENTO BPCDT 20080208AEM CP

HAAT 579.0 m, ATV ERP 1000.0 kW

	POPULATION	AREA (sq km)
within Noise Limited Contour	9653589	45233.3
not affected by terrain losses	6071463	38497.9
lost to NTSC IX	0	0.0
lost to additional IX by ATV	1102066	1154.9
lost to ATV IX only	1102066	1154.9
lost to all IX	1102066	1154.9

Potential Interfering Stations Included in above Scenario 3

Figure 3

34A CA VALLEJO	BPCDT	20081031AAE	CP
36A CA SAN JOSE	DTVPLN	DTVP1318	PLN

After Analysis

Results for: 35A CA SACRAMENTO BPCDT 20080208AEM CP

HAAT 579.0 m, ATV ERP 1000.0 kW

	POPULATION	AREA (sq km)
within Noise Limited Contour	9653589	45233.3
not affected by terrain losses	6071463	38497.9
lost to NTSC IX	0	0.0
lost to additional IX by ATV	1102076	1162.9
lost to ATV IX only	1102076	1162.9
lost to all IX	1102076	1162.9

Potential Interfering Stations Included in above Scenario 3

34A CA VALLEJO	BPCDT	20081031AAE	CP
36A CA SAN JOSE	USERRECORD01		APP

Percent new IX = 0.0002%

Worst case new IX 0.0002% Scenario 3

#####

Analysis of Interference to Affected Station 11

Analysis of current record

Channel	Call	City/State	Application Ref. No.
36	KJCN-LP	PASO ROBLES CA	BLTTL -19870602IA

Stations Potentially Affecting This Station

Chan	Call	City/State	Dist(km)	Status	Application Ref. No.
34	KTAS	SAN LUIS OBISPO CA	0.0	LIC	BLCDDT -20070222AAX
34	KTAS	SAN LUIS OBISPO CA	0.0	PLN	DTVPLN -DTVP1243
35	K35ER	SANTA MARIA CA	65.8	APP	BSTA -20071221AAD
35	K35ER	SANTA MARIA CA	51.7	LIC	BLTTL -19980902JD
36	KBFK-LP	BAKERSFIELD CA	173.7	LIC	BLTTL -20040219ACE
36	KNBC	LOS ANGELES CA	268.1	LIC	BLCDDT -19981123KG
36	KNBC	LOS ANGELES CA	268.1	PLN	DTVPLN -DTVP1317
36	KNBC	LOS ANGELES CA	268.1	CP	BPCDDT -20050406ACJ
36	KICU-TV	SAN JOSE CA	260.1	PLN	DTVPLN -DTVP1318
36	KFRE-TV	SANGER CA	220.0	LIC	BLCDDT -20060421AAI
36	KFRE-TV	SANGER CA	220.0	PLN	DTVPLN -DTVP1319
36	KICU	SAN JOSE CA	260.1	APP	USERRECORD-01

Proposal causes no interference

#####

Analysis of Interference to Affected Station 12

Figure 3

Analysis of current record

Channel	Call	City/State	Application	Ref. No.
36	KFRE-TV	SANGER CA	BLCDT	-20060421AAI

Stations Potentially Affecting This Station

Chan	Call	City/State	Dist(km)	Status	Application	Ref. No.
35	KCRA-TV	SACRAMENTO CA	223.6	LIC	BLCDT	-20040122ADR
35	KCRA-TV	SACRAMENTO CA	224.0	PLN	DTVPLN	-DTVP1280
35	KCRA-TV	SACRAMENTO CA	224.0	CP	BPCDT	-20080208AEM
36	KNBC	LOS ANGELES CA	340.2	LIC	BLCDT	-19981123KG
36	KNBC	LOS ANGELES CA	340.2	PLN	DTVPLN	-DTVP1317
36	KNBC	LOS ANGELES CA	340.2	CP	BPCDT	-20050406ACJ
36	KICU-TV	SAN JOSE CA	219.9	PLN	DTVPLN	-DTVP1318
36	KICU	SAN JOSE CA	219.9	APP	USERRECORD-01	

Total scenarios = 3

Result key: 10
 Scenario 1 Affected station 12
 Before Analysis

Results for: 36A CA SANGER BLCDT 20060421AAI LIC
 HAAT 607.0 m, ATV ERP 360.0 kW

	POPULATION	AREA (sq km)
within Noise Limited Contour	1453694	31044.2
not affected by terrain losses	1439164	27130.1
lost to NTSC IX	0	0.0
lost to additional IX by ATV	62	160.4
lost to ATV IX only	62	160.4
lost to all IX	62	160.4

Potential Interfering Stations Included in above Scenario 1

36A CA LOS ANGELES	BLCDT	19981123KG	LIC
36A CA SAN JOSE	DTVPLN	DTVP1318	PLN

After Analysis

Results for: 36A CA SANGER BLCDT 20060421AAI LIC
 HAAT 607.0 m, ATV ERP 360.0 kW

	POPULATION	AREA (sq km)
within Noise Limited Contour	1453694	31044.2
not affected by terrain losses	1439164	27130.1
lost to NTSC IX	0	0.0
lost to additional IX by ATV	62	160.4
lost to ATV IX only	62	160.4
lost to all IX	62	160.4

Potential Interfering Stations Included in above Scenario 1

36A CA LOS ANGELES	BLCDT	19981123KG	LIC
36A CA SAN JOSE	USERRECORD01		APP

Percent new IX = 0.0000%

Figure 3

Result key: 11
 Scenario 2 Affected station 12
 Before Analysis

Results for: 36A CA SANGER BLCDDT 20060421AAI LIC
 HAAT 607.0 m, ATV ERP 360.0 kW

	POPULATION	AREA (sq km)
within Noise Limited Contour	1453694	31044.2
not affected by terrain losses	1439164	27130.1
lost to NTSC IX	0	0.0
lost to additional IX by ATV	62	160.4
lost to ATV IX only	62	160.4
lost to all IX	62	160.4

Potential Interfering Stations Included in above Scenario 2

36A CA LOS ANGELES	DTVPLN	DTVP1317	PLN
36A CA SAN JOSE	DTVPLN	DTVP1318	PLN

After Analysis

Results for: 36A CA SANGER BLCDDT 20060421AAI LIC
 HAAT 607.0 m, ATV ERP 360.0 kW

	POPULATION	AREA (sq km)
within Noise Limited Contour	1453694	31044.2
not affected by terrain losses	1439164	27130.1
lost to NTSC IX	0	0.0
lost to additional IX by ATV	62	160.4
lost to ATV IX only	62	160.4
lost to all IX	62	160.4

Potential Interfering Stations Included in above Scenario 2

36A CA LOS ANGELES	DTVPLN	DTVP1317	PLN
36A CA SAN JOSE	USERRECORD01		APP

Percent new IX = 0.0000%

Result key: 12
 Scenario 3 Affected station 12
 Before Analysis

Results for: 36A CA SANGER BLCDDT 20060421AAI LIC
 HAAT 607.0 m, ATV ERP 360.0 kW

	POPULATION	AREA (sq km)
within Noise Limited Contour	1453694	31044.2
not affected by terrain losses	1439164	27130.1
lost to NTSC IX	0	0.0
lost to additional IX by ATV	62	160.4
lost to ATV IX only	62	160.4
lost to all IX	62	160.4

Potential Interfering Stations Included in above Scenario 3

36A CA LOS ANGELES	BPCDDT	20050406ACJ	CP
36A CA SAN JOSE	DTVPLN	DTVP1318	PLN

Figure 3

After Analysis

Results for: 36A CA SANGER BLCDT 20060421AAI LIC
HAAT 607.0 m, ATV ERP 360.0 kW

	POPULATION	AREA (sq km)
within Noise Limited Contour	1453694	31044.2
not affected by terrain losses	1439164	27130.1
lost to NTSC IX	0	0.0
lost to additional IX by ATV	62	160.4
lost to ATV IX only	62	160.4
lost to all IX	62	160.4

Potential Interfering Stations Included in above Scenario 3

36A CA LOS ANGELES	BPCDT	20050406ACJ	CP
36A CA SAN JOSE	USERRECORD01		APP

Percent new IX = 0.0000%

Worst case new IX 0.0000% Scenario 1

#####

Analysis of Interference to Affected Station 13

Analysis of current record

Channel	Call	City/State	Application	Ref. No.
36	KFRE-TV	SANGER CA	DTVPLN	-DTVP1319

Stations Potentially Affecting This Station

Chan	Call	City/State	Dist(km)	Status	Application	Ref. No.
35	KCRA-TV	SACRAMENTO CA	223.6	LIC	BLCDT	-20040122ADR
35	KCRA-TV	SACRAMENTO CA	224.0	PLN	DTVPLN	-DTVP1280
35	KCRA-TV	SACRAMENTO CA	224.0	CP	BPCDT	-20080208AEM
36	KNBC	LOS ANGELES CA	340.2	LIC	BLCDT	-19981123KG
36	KNBC	LOS ANGELES CA	340.2	PLN	DTVPLN	-DTVP1317
36	KNBC	LOS ANGELES CA	340.2	CP	BPCDT	-20050406ACJ
36	KICU-TV	SAN JOSE CA	219.9	PLN	DTVPLN	-DTVP1318
36	KICU	SAN JOSE CA	219.9	APP	USERRECORD-01	

Total scenarios = 3

Result key: 13
Scenario 1 Affected station 13
Before Analysis

Results for: 36A CA SANGER DTVPLN DTVP1319 PLN
HAAT 600.0 m, ATV ERP 372.0 kW

	POPULATION	AREA (sq km)
within Noise Limited Contour	1454605	31128.5
not affected by terrain losses	1440768	27230.4
lost to NTSC IX	0	0.0

Figure 3

lost to additional IX by ATV	62	152.4	
lost to ATV IX only	62	152.4	
lost to all IX	62	152.4	
Potential Interfering Stations Included in above Scenario			1
36A CA LOS ANGELES	BLCDT	19981123KG	LIC
36A CA SAN JOSE	DTVPLN	DTVP1318	PLN
After Analysis			
Results for: 36A CA SANGER	DTVPLN	DTVP1319	PLN
HAAT 600.0 m, ATV ERP 372.0 kW			
	POPULATION	AREA (sq km)	
within Noise Limited Contour	1454605	31128.5	
not affected by terrain losses	1440768	27230.4	
lost to NTSC IX	0	0.0	
lost to additional IX by ATV	62	156.4	
lost to ATV IX only	62	156.4	
lost to all IX	62	156.4	
Potential Interfering Stations Included in above Scenario			1
36A CA LOS ANGELES	BLCDT	19981123KG	LIC
36A CA SAN JOSE	USERRECORD01		APP
Percent new IX = 0.0000%			
Result key: 14			
Scenario 2 Affected station 13			
Before Analysis			
Results for: 36A CA SANGER	DTVPLN	DTVP1319	PLN
HAAT 600.0 m, ATV ERP 372.0 kW			
	POPULATION	AREA (sq km)	
within Noise Limited Contour	1454605	31128.5	
not affected by terrain losses	1440768	27230.4	
lost to NTSC IX	0	0.0	
lost to additional IX by ATV	62	152.4	
lost to ATV IX only	62	152.4	
lost to all IX	62	152.4	
Potential Interfering Stations Included in above Scenario			2
36A CA LOS ANGELES	DTVPLN	DTVP1317	PLN
36A CA SAN JOSE	DTVPLN	DTVP1318	PLN
After Analysis			
Results for: 36A CA SANGER	DTVPLN	DTVP1319	PLN
HAAT 600.0 m, ATV ERP 372.0 kW			
	POPULATION	AREA (sq km)	
within Noise Limited Contour	1454605	31128.5	
not affected by terrain losses	1440768	27230.4	
lost to NTSC IX	0	0.0	
lost to additional IX by ATV	62	156.4	
lost to ATV IX only	62	156.4	

Figure 3

```

lost to all IX                                62          156.4

Potential Interfering Stations Included in above Scenario      2

36A CA LOS ANGELES          DTVPLN    DTVP1317      PLN
36A CA SAN JOSE             USERRECORD01          APP

Percent new IX =      0.0000%

Result key:          15
Scenario            3  Affected station          13
Before Analysis

Results for: 36A CA SANGER          DTVPLN    DTVP1319      PLN
HAAT  600.0 m, ATV ERP  372.0 kW
                POPULATION    AREA (sq km)
within Noise Limited Contour    1454605    31128.5
not affected by terrain losses  1440768    27230.4
lost to NTSC IX                  0          0.0
lost to additional IX by ATV     62         152.4
lost to ATV IX only             62         152.4
lost to all IX                  62         152.4

Potential Interfering Stations Included in above Scenario      3

36A CA LOS ANGELES          BPCDT      20050406ACJ    CP
36A CA SAN JOSE             DTVPLN    DTVP1318      PLN

After Analysis

Results for: 36A CA SANGER          DTVPLN    DTVP1319      PLN
HAAT  600.0 m, ATV ERP  372.0 kW
                POPULATION    AREA (sq km)
within Noise Limited Contour    1454605    31128.5
not affected by terrain losses  1440768    27230.4
lost to NTSC IX                  0          0.0
lost to additional IX by ATV     62         156.4
lost to ATV IX only             62         156.4
lost to all IX                  62         156.4

Potential Interfering Stations Included in above Scenario      3

36A CA LOS ANGELES          BPCDT      20050406ACJ    CP
36A CA SAN JOSE             USERRECORD01          APP

Percent new IX =      0.0000%

Worst case new IX    0.0000% Scenario          1

#####

Analysis of Interference to Affected Station  14

Analysis of current record
Channel      Call      City/State      Application Ref. No.

```

Figure 3

36 KICU SAN JOSE CA USERRECORD-01

Stations Potentially Affecting This Station

Chan	Call	City/State	Dist(km)	Status	Application	Ref. No.
35	KCRA-TV	SACRAMENTO CA	90.3	LIC	BLCDDT	-20040122ADR
35	KCRA-TV	SACRAMENTO CA	92.5	PLN	DTVPLN	-DTVP1280
35	KCRA-TV	SACRAMENTO CA	92.5	CP	BPCDDT	-20080208AEM
36	KFRE-TV	SANGER CA	219.9	LIC	BLCDDT	-20060421AAI
36	KFRE-TV	SANGER CA	219.9	PLN	DTVPLN	-DTVP1319

Total scenarios = 6

Result key: 16
 Scenario 1 Affected station 14
 Before Analysis

Results for: 36A CA SAN JOSE USERRECORD01 APP

HAAT 690.0 m, ATV ERP 740.0 kW

	POPULATION	AREA (sq km)
within Noise Limited Contour	7872010	40425.0
not affected by terrain losses	6937151	31752.4
lost to NTSC IX	0	0.0
lost to additional IX by ATV	313043	2841.1
lost to ATV IX only	313043	2841.1
lost to all IX	313043	2841.1

Potential Interfering Stations Included in above Scenario 1

35A CA SACRAMENTO	BLCDDT	20040122ADR	LIC
36A CA SANGER	BLCDDT	20060421AAI	LIC

Result key: 17
 Scenario 2 Affected station 14
 Before Analysis

Results for: 36A CA SAN JOSE USERRECORD01 APP

HAAT 690.0 m, ATV ERP 740.0 kW

	POPULATION	AREA (sq km)
within Noise Limited Contour	7872010	40425.0
not affected by terrain losses	6937151	31752.4
lost to NTSC IX	0	0.0
lost to additional IX by ATV	313043	2857.2
lost to ATV IX only	313043	2857.2
lost to all IX	313043	2857.2

Potential Interfering Stations Included in above Scenario 2

35A CA SACRAMENTO	BLCDDT	20040122ADR	LIC
36A CA SANGER	DTVPLN	DTVP1319	PLN

Result key: 18
 Scenario 3 Affected station 14
 Before Analysis

Results for: 36A CA SAN JOSE USERRECORD01 APP

Figure 3

```

HAAT  690.0 m, ATV ERP  740.0 kW
                                POPULATION  AREA (sq km)
within Noise Limited Contour    7872010    40425.0
not affected by terrain losses  6937151    31752.4
lost to NTSC IX                  0          0.0
lost to additional IX by ATV    327429    2877.4
lost to ATV IX only             327429    2877.4
lost to all IX                  327429    2877.4

Potential Interfering Stations Included in above Scenario      3

35A CA SACRAMENTO             DTVPLN    DTVP1280    PLN
36A CA SANGER                  BLCDT     20060421AAI  LIC

Result key:          19
Scenario             4  Affected station          14
Before Analysis

Results for: 36A CA SAN JOSE             USERRECORD01      APP
HAAT  690.0 m, ATV ERP  740.0 kW
                                POPULATION  AREA (sq km)
within Noise Limited Contour    7872010    40425.0
not affected by terrain losses  6937151    31752.4
lost to NTSC IX                  0          0.0
lost to additional IX by ATV    327429    2893.6
lost to ATV IX only             327429    2893.6
lost to all IX                  327429    2893.6

Potential Interfering Stations Included in above Scenario      4

35A CA SACRAMENTO             DTVPLN    DTVP1280    PLN
36A CA SANGER                  DTVPLN    DTVP1319    PLN

Result key:          20
Scenario             5  Affected station          14
Before Analysis

Results for: 36A CA SAN JOSE             USERRECORD01      APP
HAAT  690.0 m, ATV ERP  740.0 kW
                                POPULATION  AREA (sq km)
within Noise Limited Contour    7872010    40425.0
not affected by terrain losses  6937151    31752.4
lost to NTSC IX                  0          0.0
lost to additional IX by ATV    327429    2877.4
lost to ATV IX only             327429    2877.4
lost to all IX                  327429    2877.4

Potential Interfering Stations Included in above Scenario      5

35A CA SACRAMENTO             BPCDT     20080208AEM  CP
36A CA SANGER                  BLCDT     20060421AAI  LIC

Result key:          21
Scenario             6  Affected station          14
Before Analysis

Results for: 36A CA SAN JOSE             USERRECORD01      APP

```

Figure 3

```
HAAT  690.0 m, ATV ERP  740.0 kW
                                POPULATION  AREA (sq km)
within Noise Limited Contour    7872010    40425.0
not affected by terrain losses  6937151    31752.4
lost to NTSC IX                  0         0.0
lost to additional IX by ATV    327429    2893.6
lost to ATV IX only            327429    2893.6
lost to all IX                 327429    2893.6

Potential Interfering Stations Included in above Scenario      6

35A CA SACRAMENTO          BPCDT      20080208AEM  CP
36A CA SANGER              DTVPLN      DTVP1319    PLN

#####

FINISHED FINISHED FINISHED FINISHED FINISHED FINISHED
```


APPENDIX

TRANSMITTING ANTENNA VERTICAL AND HORIZONTAL PLANE PATTERN

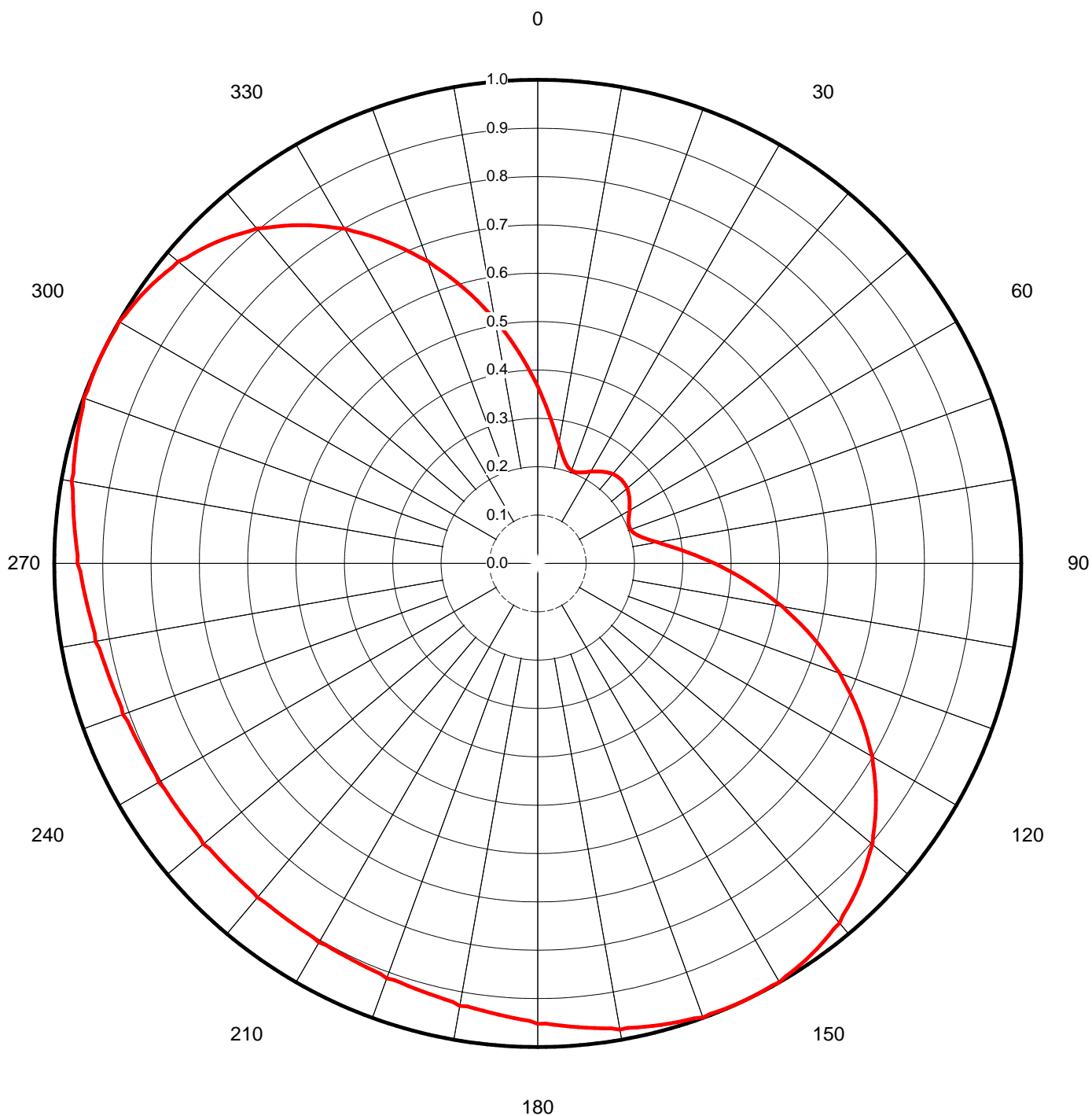


Proposal Number	C-00487	Revision:	5
Date	14-Feb-08		
Call Letters	KICU-DT	Channel	36
Location	San Jose, CA		
Customer			
Antenna Type	TFU-30DSC/VP-R C170		

AZIMUTH PATTERN

Gain **1.70** **(2.30 dB)**
Calculated / Measured **Calculated**

Frequency **605.00 MHz**
Drawing # **TFU-C170**





Proposal Number

C-00487

Revision:

5

Date

14-Feb-08

Call Letters

KICU-DT

Channel

36

Location

San Jose, CA

Customer

Antenna Type

TFU-30DSC/VP-R C170**TABULATION OF AZIMUTH PATTERN**Azimuth Pattern Drawing #: **TFU-C170**

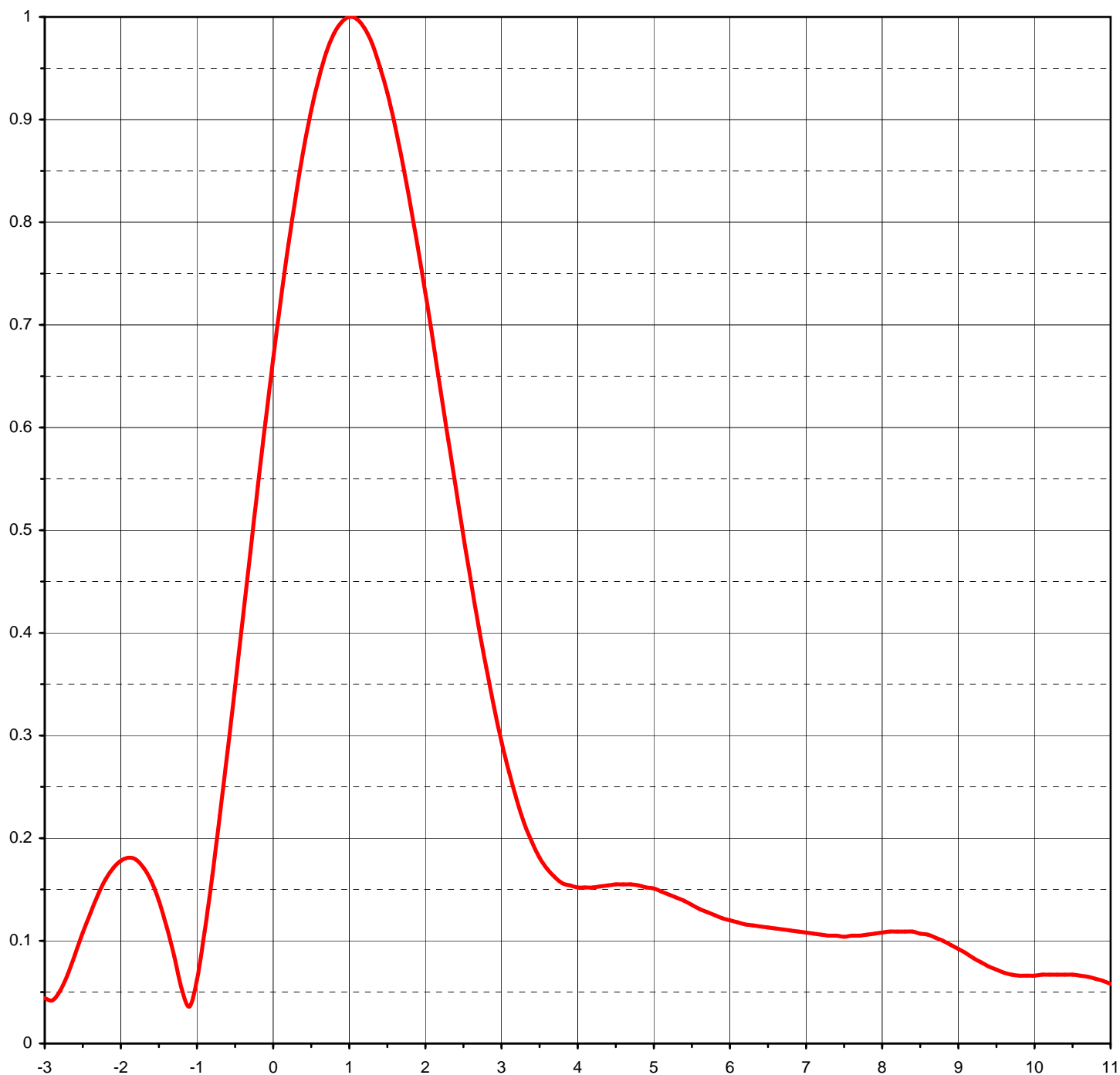
Angle	Field	Angle	Field	Angle	Field	Angle	Field	Angle	Field	Angle	Field	Angle	Field	Angle	Field
0	0.366	45	0.245	90	0.366	135	0.940	180	0.952	225	0.899	270	0.952	315	0.940
1	0.352	46	0.244	91	0.379	136	0.946	181	0.946	226	0.899	271	0.952	316	0.933
2	0.338	47	0.244	92	0.393	137	0.952	182	0.944	227	0.899	272	0.954	317	0.925
3	0.326	48	0.243	93	0.407	138	0.958	183	0.941	228	0.899	273	0.957	318	0.918
4	0.313	49	0.242	94	0.422	139	0.963	184	0.939	229	0.899	274	0.960	319	0.910
5	0.302	50	0.242	95	0.437	140	0.971	185	0.936	230	0.903	275	0.963	320	0.904
6	0.290	51	0.240	96	0.451	141	0.973	186	0.934	231	0.900	276	0.965	321	0.893
7	0.280	52	0.238	97	0.466	142	0.977	187	0.932	232	0.900	277	0.968	322	0.883
8	0.269	53	0.236	98	0.482	143	0.981	188	0.930	233	0.900	278	0.971	323	0.874
9	0.260	54	0.234	99	0.497	144	0.984	189	0.928	234	0.900	279	0.973	324	0.864
10	0.252	55	0.232	100	0.514	145	0.987	190	0.929	235	0.900	280	0.979	325	0.854
11	0.243	56	0.229	101	0.527	146	0.990	191	0.924	236	0.901	281	0.978	326	0.843
12	0.235	57	0.227	102	0.543	147	0.992	192	0.922	237	0.901	282	0.981	327	0.832
13	0.229	58	0.224	103	0.558	148	0.994	193	0.920	238	0.901	283	0.983	328	0.821
14	0.223	59	0.222	104	0.573	149	0.996	194	0.918	239	0.902	284	0.986	329	0.809
15	0.218	60	0.220	105	0.588	150	1.000	195	0.917	240	0.905	285	0.988	330	0.799
16	0.214	61	0.216	106	0.604	151	0.998	196	0.915	241	0.903	286	0.990	331	0.785
17	0.210	62	0.214	107	0.619	152	0.999	197	0.914	242	0.903	287	0.992	332	0.773
18	0.207	63	0.211	108	0.634	153	1.000	198	0.912	243	0.904	288	0.993	333	0.760
19	0.206	64	0.209	109	0.648	154	1.000	199	0.911	244	0.905	289	0.995	334	0.747
20	0.205	65	0.207	110	0.665	155	1.000	200	0.913	245	0.905	290	0.999	335	0.733
21	0.204	66	0.206	111	0.677	156	1.000	201	0.909	246	0.906	291	0.997	336	0.720
22	0.204	67	0.205	112	0.692	157	0.999	202	0.908	247	0.907	292	0.998	337	0.706
23	0.205	68	0.204	113	0.706	158	0.998	203	0.907	248	0.908	293	0.999	338	0.692
24	0.206	69	0.204	114	0.720	159	0.997	204	0.906	249	0.909	294	1.000	339	0.677
25	0.207	70	0.205	115	0.733	160	0.999	205	0.905	250	0.913	295	1.000	340	0.665
26	0.209	71	0.206	116	0.747	161	0.995	206	0.905	251	0.911	296	1.000	341	0.648
27	0.211	72	0.207	117	0.760	162	0.993	207	0.904	252	0.912	297	1.000	342	0.634
28	0.214	73	0.210	118	0.773	163	0.992	208	0.903	253	0.914	298	0.999	343	0.619
29	0.216	74	0.214	119	0.785	164	0.990	209	0.903	254	0.915	299	0.998	344	0.604
30	0.220	75	0.218	120	0.799	165	0.988	210	0.905	255	0.917	300	1.000	345	0.588
31	0.222	76	0.223	121	0.809	166	0.986	211	0.902	256	0.918	301	0.996	346	0.573
32	0.224	77	0.229	122	0.821	167	0.983	212	0.901	257	0.920	302	0.994	347	0.558
33	0.227	78	0.235	123	0.832	168	0.981	213	0.901	258	0.922	303	0.992	348	0.543
34	0.229	79	0.243	124	0.843	169	0.978	214	0.901	259	0.924	304	0.990	349	0.527
35	0.232	80	0.252	125	0.854	170	0.979	215	0.900	260	0.929	305	0.987	350	0.514
36	0.234	81	0.260	126	0.864	171	0.973	216	0.900	261	0.928	306	0.984	351	0.497
37	0.236	82	0.269	127	0.874	172	0.971	217	0.900	262	0.930	307	0.981	352	0.482
38	0.238	83	0.280	128	0.883	173	0.968	218	0.900	263	0.932	308	0.977	353	0.466
39	0.240	84	0.290	129	0.893	174	0.965	219	0.900	264	0.934	309	0.973	354	0.451
40	0.242	85	0.302	130	0.904	175	0.963	220	0.902	265	0.936	310	0.971	355	0.437
41	0.242	86	0.313	131	0.910	176	0.960	221	0.899	266	0.939	311	0.963	356	0.422
42	0.243	87	0.326	132	0.918	177	0.957	222	0.899	267	0.941	312	0.958	357	0.407
43	0.244	88	0.338	133	0.925	178	0.954	223	0.899	268	0.944	313	0.952	358	0.393
44	0.244	89	0.352	134	0.933	179	0.952	224	0.899	269	0.946	314	0.946	359	0.379



Proposal Number	C-00487	Revision:	5
Date	14-Feb-08		
Call Letters	KICU-DT	Channel	36
Location	San Jose, CA		
Customer			
Antenna Type	TFU-30DSC/VP-R C170		

ELEVATION PATTERN

RMS Gain at Main Lobe	25.50 (14.07 dB)	Beam Tilt	1.00 deg
RMS Gain at Horizontal	11.30 (10.53 dB)	Frequency	605.00 MHz
Calculated / Measured	Calculated	Drawing #	30Q255100

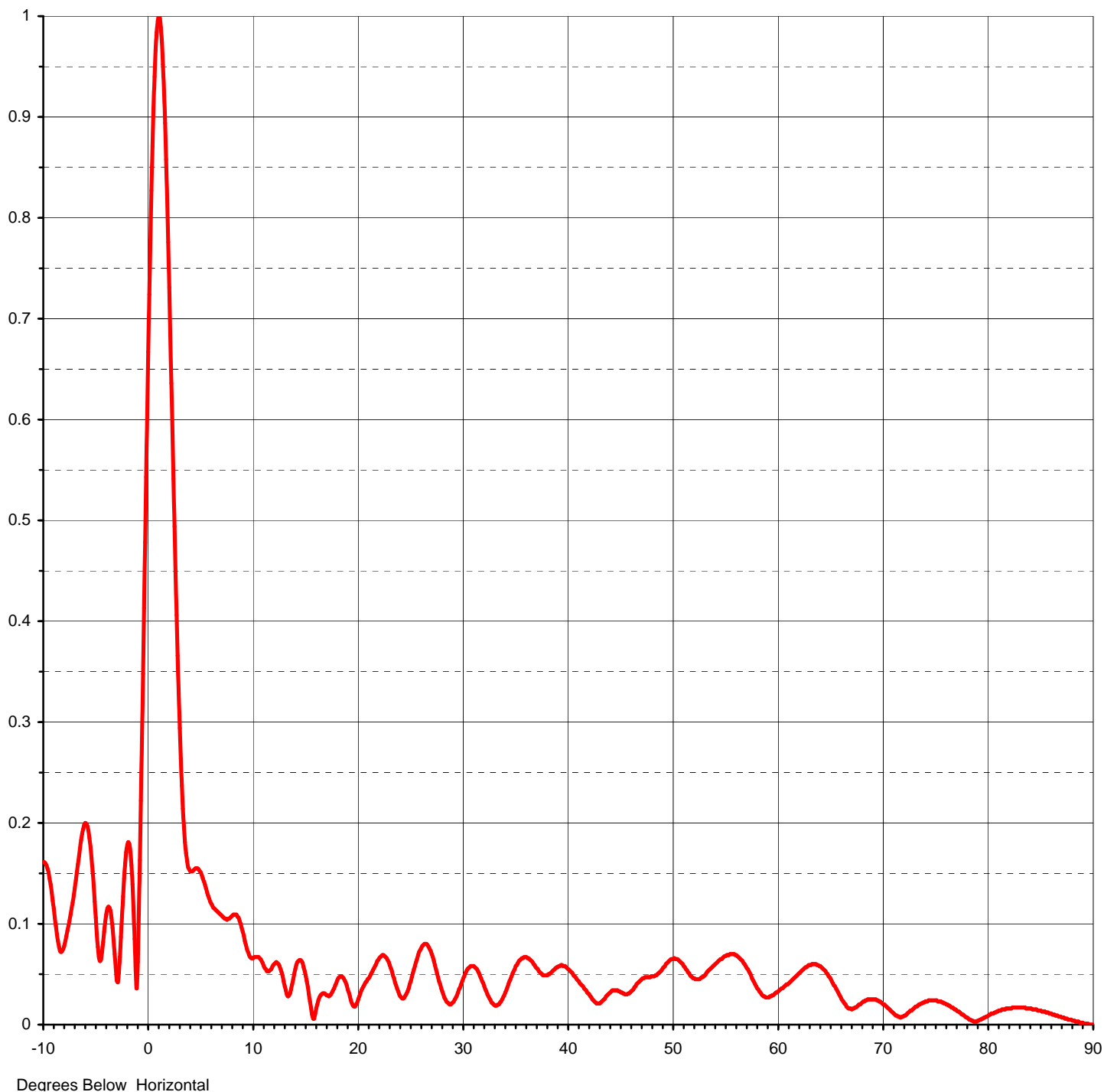




Proposal Number	C-00487	Revision:	5
Date	14-Feb-08		
Call Letters	KICU-DT	Channel	36
Location	San Jose, CA		
Customer			
Antenna Type	TFU-30DSC/VP-R C170		

ELEVATION PATTERN

RMS Gain at Main Lobe	25.50 (14.07 dB)	Beam Tilt	1.00 deg
RMS Gain at Horizontal	11.30 (10.53 dB)	Frequency	605.00 MHz
Calculated / Measured	Calculated	Drawing #	30Q255100-90





Proposal Number **C-00487** Revision: **5**
Date **14-Feb-08**
Call Letters **KICU-DT** Channel **36**
Location **San Jose, CA**
Customer
Antenna Type **TFU-30DSC/VP-R C170**

TABULATION OF ELEVATION PATTERN

Elevation Pattern Drawing #: **30Q255100-90**

Angle	Field	Angle	Field	Angle	Field	Angle	Field	Angle	Field	Angle	Field
-10.0	0.161	2.4	0.541	10.6	0.067	30.5	0.055	51.0	0.060	71.5	0.008
-9.5	0.151	2.6	0.449	10.8	0.065	31.0	0.058	51.5	0.052	72.0	0.009
-9.0	0.115	2.8	0.366	11.0	0.061	31.5	0.053	52.0	0.046	72.5	0.013
-8.5	0.077	3.0	0.294	11.5	0.053	32.0	0.041	52.5	0.045	73.0	0.017
-8.0	0.078	3.2	0.237	12.0	0.059	32.5	0.028	53.0	0.048	73.5	0.020
-7.5	0.103	3.4	0.196	12.5	0.060	33.0	0.020	53.5	0.054	74.0	0.023
-7.0	0.135	3.6	0.170	13.0	0.043	33.5	0.020	54.0	0.059	74.5	0.024
-6.5	0.175	3.8	0.156	13.5	0.029	34.0	0.029	54.5	0.064	75.0	0.024
-6.0	0.200	4.0	0.152	14.0	0.050	34.5	0.043	55.0	0.068	75.5	0.023
-5.5	0.176	4.2	0.152	14.5	0.064	35.0	0.055	55.5	0.070	76.0	0.020
-5.0	0.106	4.4	0.154	15.0	0.053	35.5	0.064	56.0	0.069	76.5	0.017
-4.5	0.065	4.6	0.155	15.5	0.023	36.0	0.067	56.5	0.065	77.0	0.014
-4.0	0.109	4.8	0.154	16.0	0.011	36.5	0.064	57.0	0.058	77.5	0.010
-3.5	0.106	5.0	0.151	16.5	0.029	37.0	0.057	57.5	0.049	78.0	0.007
-3.0	0.044	5.2	0.145	17.0	0.030	37.5	0.051	58.0	0.038	78.5	0.004
-2.8	0.051	5.4	0.139	17.5	0.030	38.0	0.049	58.5	0.030	79.0	0.004
-2.6	0.087	5.6	0.131	18.0	0.041	38.5	0.052	59.0	0.027	79.5	0.006
-2.4	0.127	5.8	0.125	18.5	0.048	39.0	0.057	59.5	0.029	80.0	0.009
-2.2	0.160	6.0	0.120	19.0	0.039	39.5	0.059	60.0	0.032	80.5	0.011
-2.0	0.178	6.2	0.116	19.5	0.021	40.0	0.056	60.5	0.036	81.0	0.014
-1.8	0.179	6.4	0.114	20.0	0.022	40.5	0.051	61.0	0.040	81.5	0.015
-1.6	0.158	6.6	0.112	20.5	0.036	41.0	0.044	61.5	0.045	82.0	0.016
-1.4	0.114	6.8	0.110	21.0	0.045	41.5	0.038	62.0	0.050	82.5	0.017
-1.2	0.053	7.0	0.108	21.5	0.054	42.0	0.031	62.5	0.055	83.0	0.017
-1.0	0.062	7.2	0.106	22.0	0.064	42.5	0.024	63.0	0.059	83.5	0.017
-0.8	0.163	7.4	0.105	22.5	0.069	43.0	0.021	63.5	0.060	84.0	0.016
-0.6	0.284	7.6	0.105	23.0	0.062	43.5	0.025	64.0	0.058	84.5	0.015
-0.4	0.413	7.8	0.106	23.5	0.046	44.0	0.031	64.5	0.053	85.0	0.014
-0.2	0.543	8.0	0.108	24.0	0.030	44.5	0.034	65.0	0.045	85.5	0.012
0.0	0.667	8.2	0.109	24.5	0.027	45.0	0.033	65.5	0.036	86.0	0.011
0.2	0.778	8.4	0.109	25.0	0.040	45.5	0.030	66.0	0.026	86.5	0.009
0.4	0.871	8.6	0.106	25.5	0.058	46.0	0.032	66.5	0.018	87.0	0.007
0.6	0.940	8.8	0.100	26.0	0.074	46.5	0.038	67.0	0.015	87.5	0.006
0.8	0.984	9.0	0.092	26.5	0.080	47.0	0.044	67.5	0.018	88.0	0.004
1.0	1.000	9.2	0.083	27.0	0.073	47.5	0.047	68.0	0.022	88.5	0.003
1.2	0.989	9.4	0.075	27.5	0.055	48.0	0.048	68.5	0.025	89.0	0.002
1.4	0.952	9.6	0.069	28.0	0.036	48.5	0.049	69.0	0.025	89.5	0.001
1.6	0.894	9.8	0.067	28.5	0.023	49.0	0.054	69.5	0.024	90.0	0.000
1.8	0.818	10.0	0.066	29.0	0.021	49.5	0.061	70.0	0.020		
2.0	0.731	10.2	0.067	29.5	0.029	50.0	0.065	70.5	0.016		
2.2	0.636	10.4	0.067	30.0	0.043	50.5	0.065	71.0	0.011		