

**MULTIPLE OWNERSHIP
COMPLIANCE STUDY
WLOB-FM – Rumford, Maine**
September 2003

This Multiple Ownership Compliance Study was conducted to determine if the move of WLOB-FM would comply with §73.3555 of the Commission's Rules. Exhibit #1 indicates the present co-owned stations. The six co-owned stations are: WLOB-FM (Application), Rumford, ME; WJAE (AM), Westbrook, ME; WJJB-AM, Brunswick, ME; WJJB-FM, Topsham, ME; WLOB-AM, Portland, ME and WRED (FM), Saco, ME.

The city grade contours of these subject stations form one distinct market. The subject stations are WLOB-FM (Application), WJAE (AM), WJJB-AM, WJJB-FM and WLOB-FM. There is no city grade overlap between the proposed WLOB-FM and co-owned WRED (FM), Saco, ME.

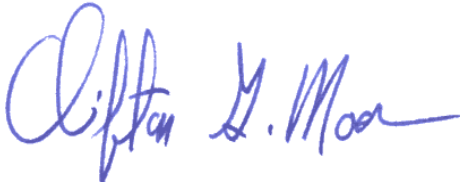
The subject stations are shown in Exhibit #2A. Exhibit #2B is a mutual overlap detail. The city grade contours of stations providing service to the subject area are shown in Exhibits #3-4. Exhibit #5 is a tabulation of services to the subject area.

There are many more than 15 services in the market. For simplicity, not all services are shown in the market. In this study, we have indicated 21 services.

The Commission's multiple ownership rule in §73.3555 (a) (1) (iii) states that:

"In a radio market with between 15 and 29 (inclusive) commercial radio stations, a party may own, operate, or control up to 6 commercial radio stations, not more than 4 of which are in the same service (AM or FM);"

Therefore, based on these findings, it is believed that the ownership of the subject stations is in compliance with §73.3555 of the Commission's Rules.



Clifton G. Moor
Bromo Communications, Inc.

September 19, 2003

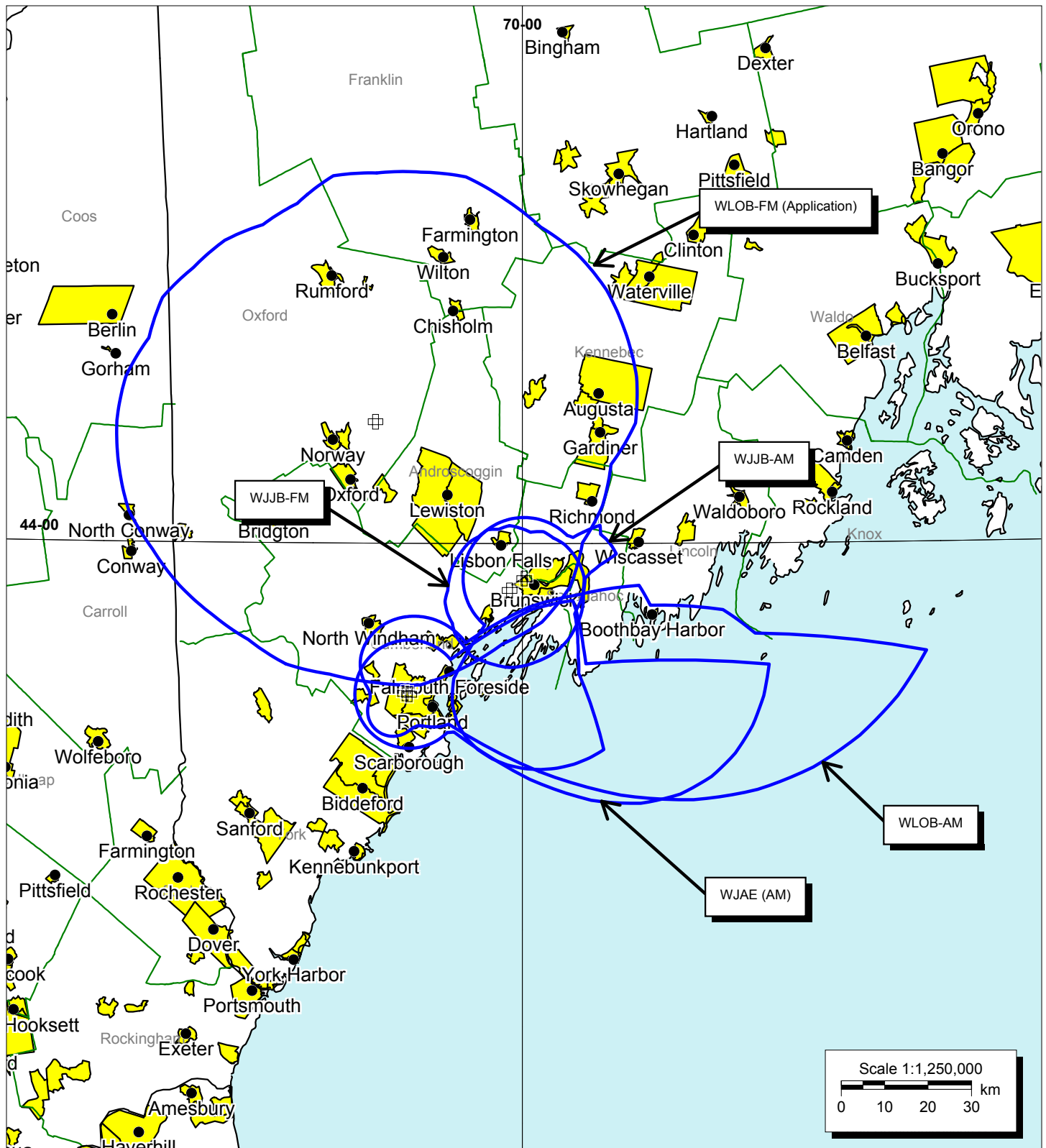


EXHIBIT #2A
Subject Stations
MULTIPLE OWNERSHIP COMPLIANCE STUDY
WLOB-FM - Rumford, Maine

Bromo Communications, Inc.
 Atlanta, Georgia
 September 2003

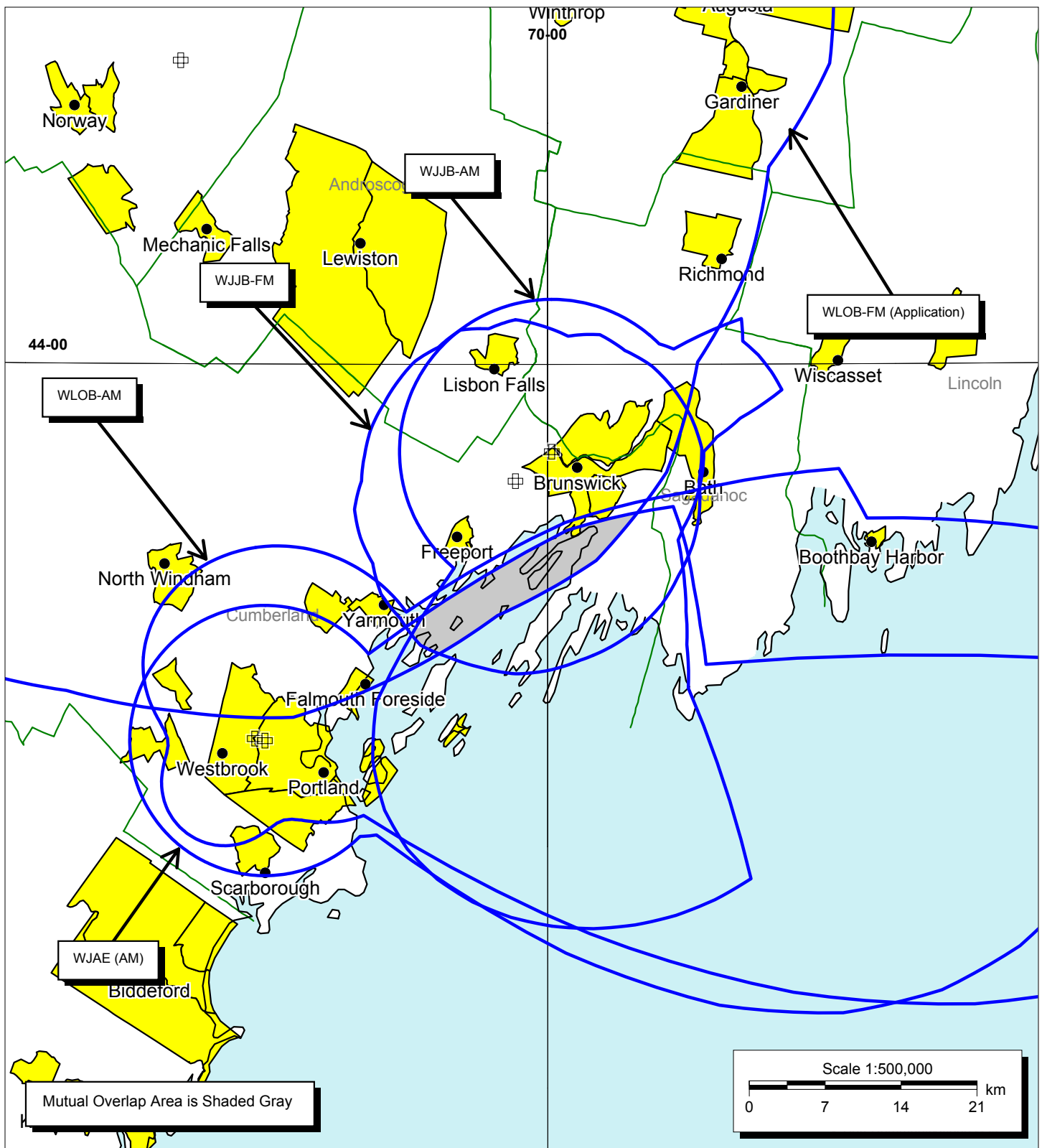


EXHIBIT #2B
Subject Stations - Mutual Overlap Detail
MULTIPLE OWNERSHIP COMPLIANCE STUDY
WLOB-FM - Rumford, Maine

Bromo Communications, Inc.
 Atlanta, Georgia
 September 2003

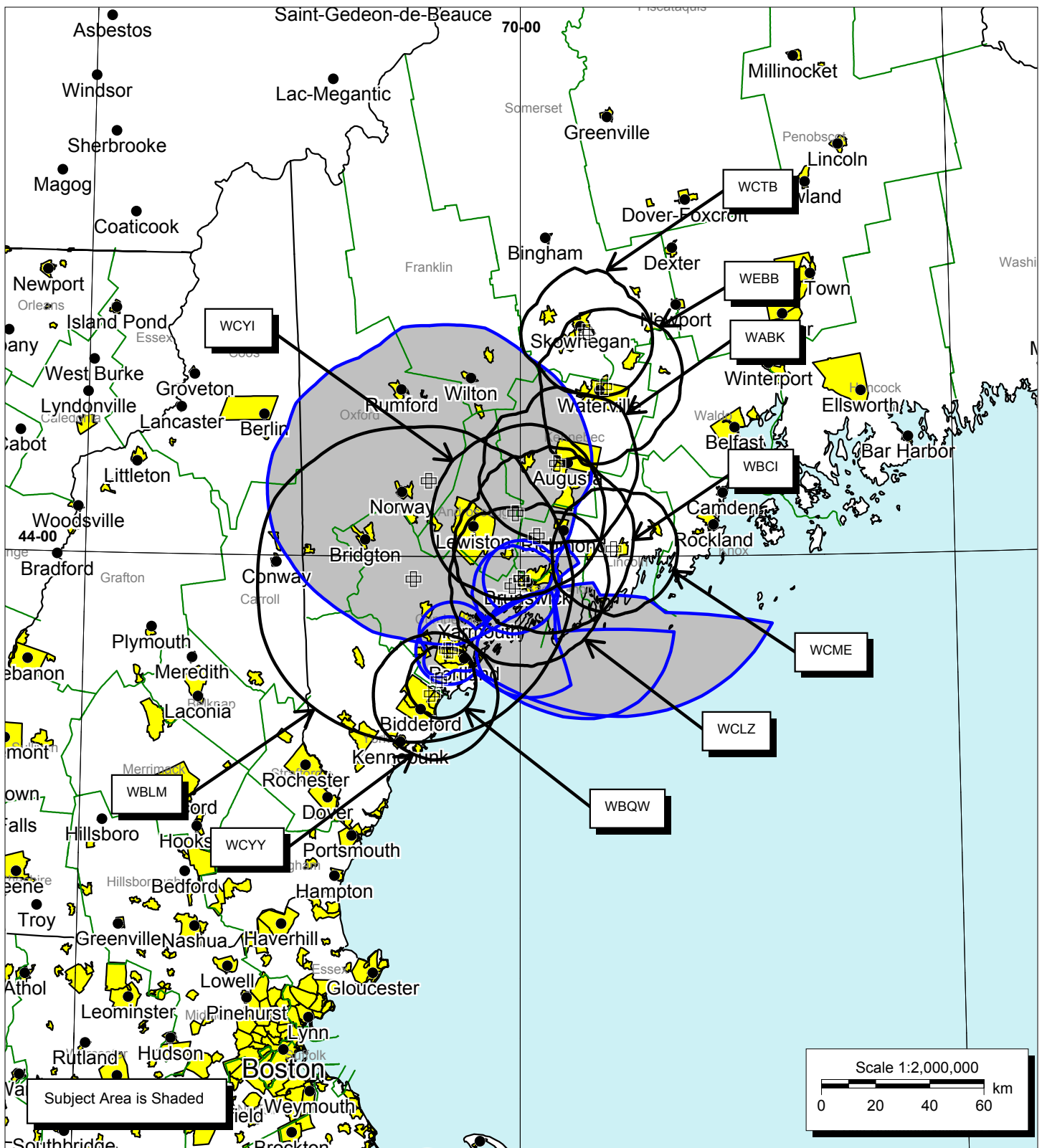


EXHIBIT #3
FM Services to Subject Area
MULTIPLE OWNERSHIP COMPLIANCE STUDY
WLOB-FM - Rumford, Maine

Bromo Communications, Inc.
 Atlanta, Georgia
 September 2003

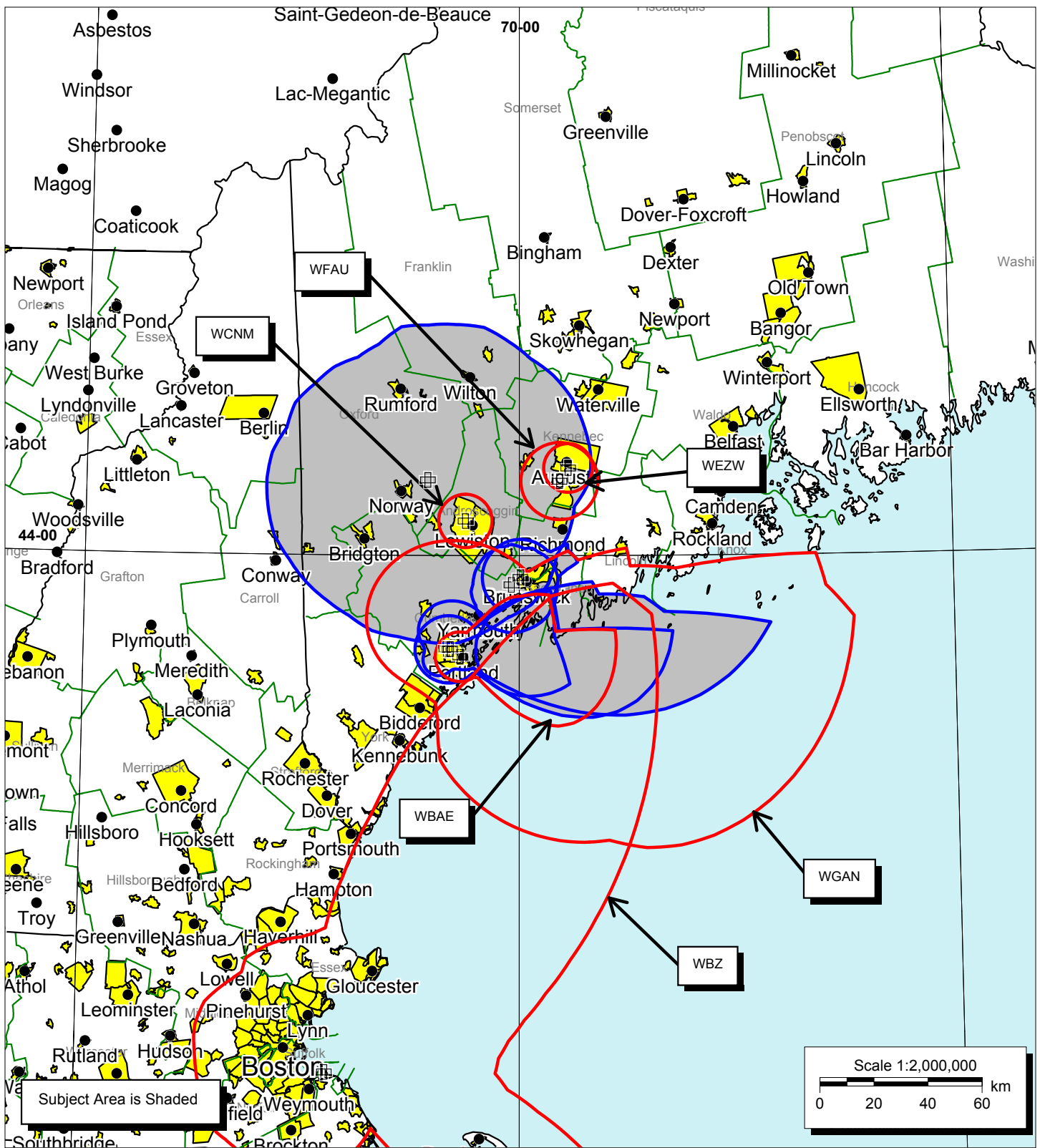


EXHIBIT #4
AM Services to Subject Area
MULTIPLE OWNERSHIP COMPLIANCE STUDY
WLOB-FM - Rumford, Maine

Bromo Communications, Inc.
 Atlanta, Georgia
 September 2003

EXHIBIT #5
MULTIPLE OWNERSHIP COMPLIANCE STUDY
WLOB-FM – Rumford, Maine
September 2003

Tabulation of Services to Subject Area

Subject Stations

Call	Ch/Freq	Latitude	Longitude	Power (kW)	City	State
WLOB (App.)	242C1	44° 15' 06"	70° 25' 24"	100	Rumford	ME
WJAE	1440	43° 41' 16"	70° 19' 24"	5	Westbrook	ME
WJJB	900	43° 55' 40"	69° 59' 43"	1	Brunswick	ME
WJJB	238A	43° 54' 12"	70° 02' 13"	3	Topsham	ME
WLOB	1310	43° 41' 22"	70° 20' 06"	5	Portland	ME

FM Services to Subject Area

Call	Ch/Freq	Latitude	Longitude	Power (kW)	City	State
WABK	282B	44° 18' 36"	69° 49' 51"	50	Gardiner	ME
WBCI	290B	44° 04' 09"	69° 55' 28"	50	Bath	ME
WBLM	275C	43° 55' 29"	70° 29' 29"	100	Portland	ME
WBQW	292A	43° 35' 24"	70° 22' 20"	3	Scarborough	ME
WCLZ	255B	43° 55' 40"	69° 59' 43"	48	Brunswick	ME
WCME	244B1	44° 01' 31"	69° 34' 17"	15.5	Boothbay Harbor	ME
WCTB	228C3	44° 44' 42"	69° 41' 32"	10.5	Fairfield	ME
WCYI	230B	44° 08' 40"	70° 01' 22"	27.5	Lewiston	ME
WCYY	232B1	43° 32' 39"	70° 24' 16"	11.5	Biddeford	ME
WEBB	253C1	44° 33' 52"	69° 36' 39"	61	Waterville	ME

AM Services to Subject Area

Call	Ch/Freq	Latitude	Longitude	Power (kW)	City	State
WBAE	1490	43° 39' 48"	70° 16' 17"	1	Portland	ME
WBZ	1030	42° 16' 44"	70° 52' 34"	50	Boston	MA
WCNM	1240	44° 06' 55"	70° 14' 56"	1	Lewiston	ME
WEZW	1400	44° 17' 30"	69° 46' 27"	1	Augusta	ME
WFAU	1280	44° 14' 53"	69° 48' 51"	5	Gardiner	ME
WGAN	520	43° 41' 22"	70° 19' 00"	5	Portland	ME

<p style="text-align: center;">Bromo Communications, Inc. Atlanta, Georgia</p>
--