

City of License Coverage

The community of license for KLVS is Livermore, California. The city of Livermore contains an area of 66.59 sq. km* and has a population of 80,996* persons (see Exhibits 28-A and 28-A1). The proposed facility's 70 dBu F(50,50) contour covers 61.47 sq. km and 79,282 persons (see Exhibits 28-B and 28-B1) within the city limits of Livermore. The chart below shows the percentages of both area and population covered within the city limits of Livermore covered by the proposed KLVS facility.

	City of Livermore	KLVS Proposed	Percentage of Coverage
Area	66.59	61.47	92.31%
Population	80,996	79,282	97.88%

Thus, the facility proposed in this application meets the requirement to serve the community of license.

*Note - The city limits and population were calculated using the 2000 Census data as rendered by V-Soft Communications program Probe 3.

Exhibit 28-A

KLVS.P

Latitude: 37-52-54 N
Longitude: 121-55-05 W
ERP: 0.88 kW
Channel: 297
Frequency: 107.3 MHz
AMSL Height: 1135.0 m
Horiz. Pattern: Omni

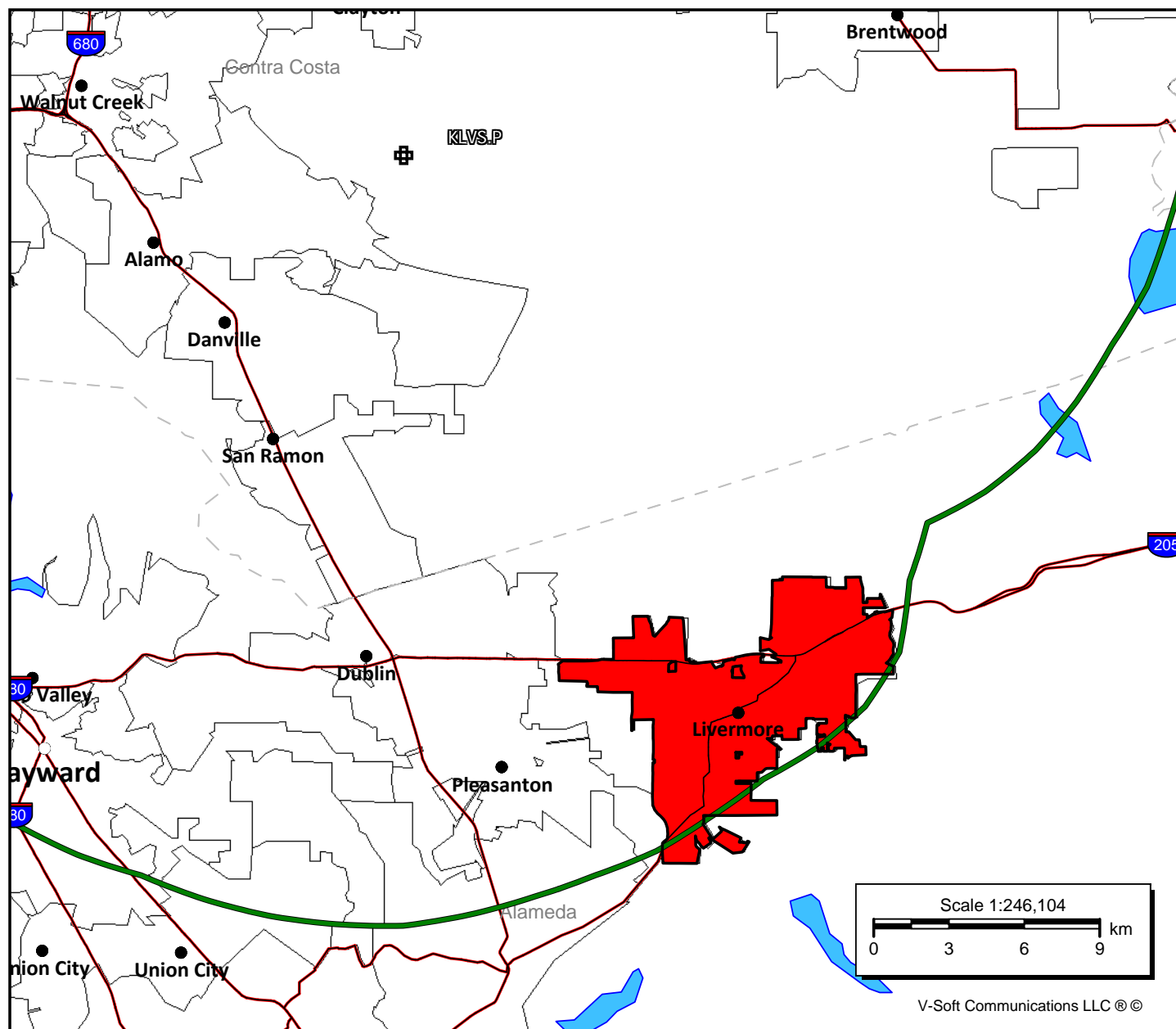


Exhibit 28-A1

Polygon Population Report - Livermore, CA (7/7)

Population Database: 2010 US Census (PL)

Total Population: 80,996

Housing Units: 30,343

Polygon Area: 66.59 sq. km

	Housing Units	Population
California		
Alameda County		
Total	582,549	1,510,271
Livermore, CA	30,343	80,996

Exhibit 28-B

KLVS.P

Latitude: 37-52-54 N
Longitude: 121-55-05 W
ERP: 0.88 kW
Channel: 297
Frequency: 107.3 MHz
AMSL Height: 1135.0 m
Horiz. Pattern: Omni

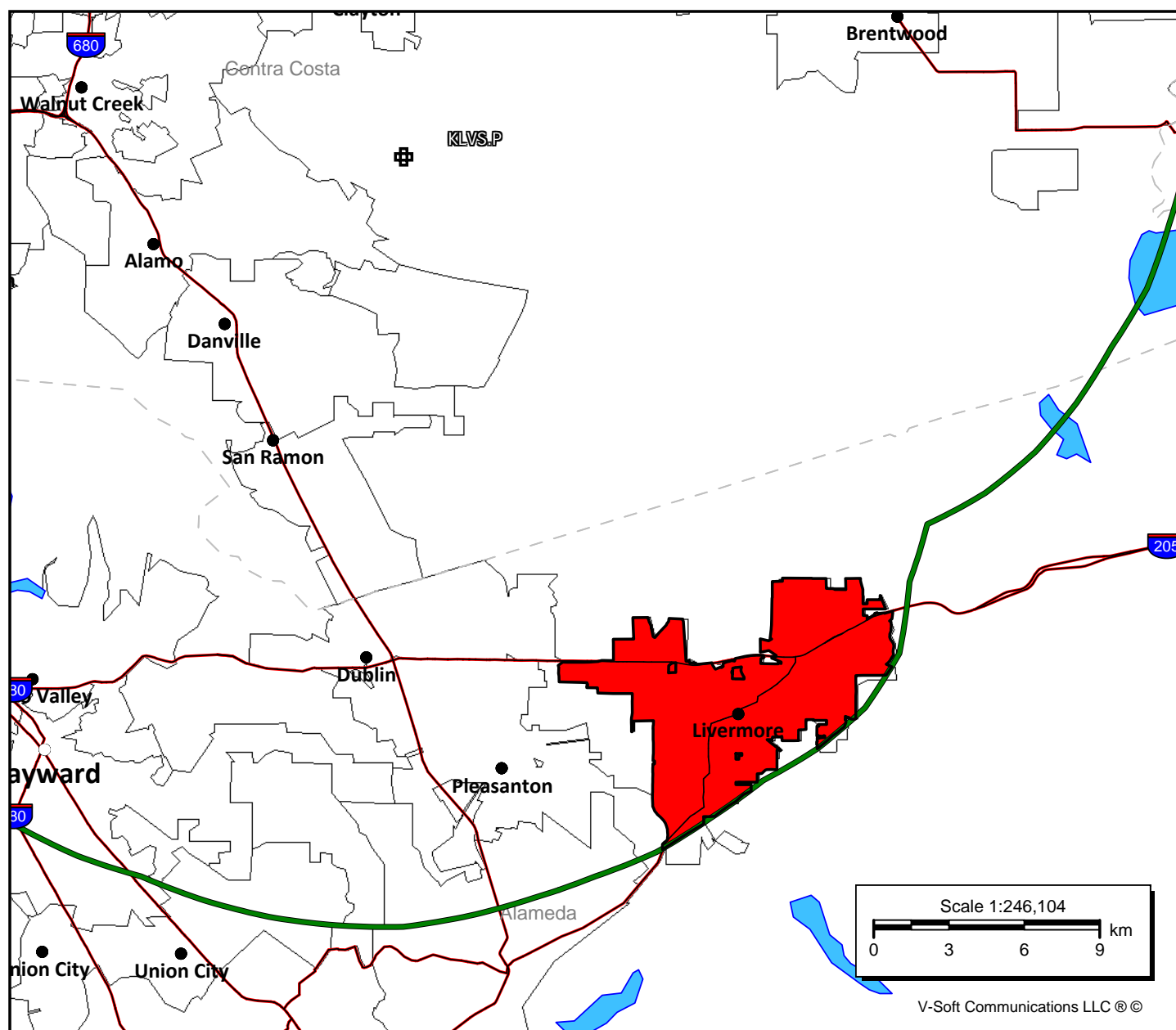


Exhibit 28-B1

Polygon Population Report - Livermore, CA (covered)

Population Database: 2010 US Census (PL)

Total Population: 79,282

Housing Units: 29,766

Polygon Area: 61.47 sq. km

	Housing Units	Population
California		
Alameda County		
Total	582,549	1,510,271
Livermore, CA (covered)	29,766	79,282