

(NORTHWEST ATLANTA)

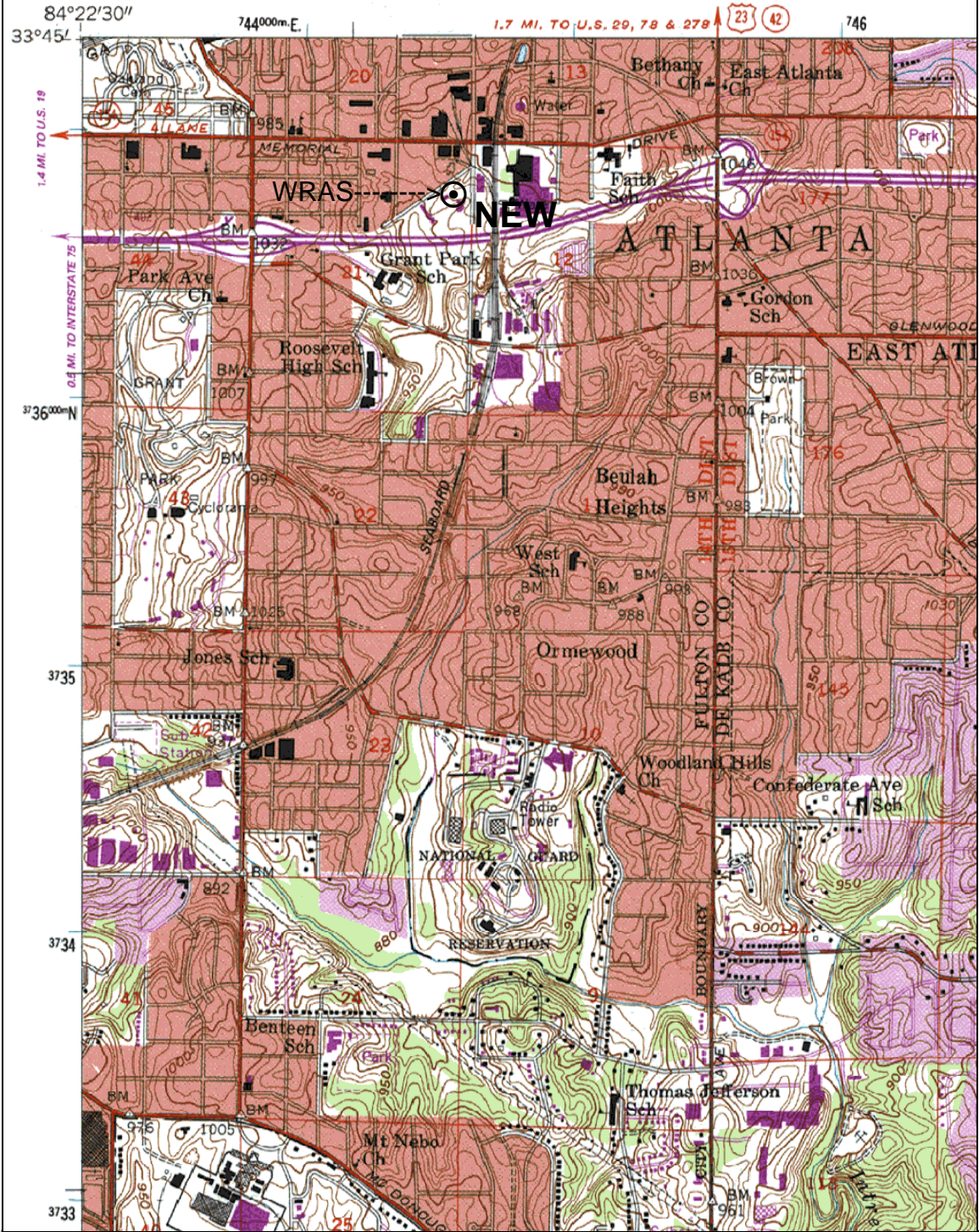
(STONE MT)

084° 37' 47.98" W
034° 03' 05.19" N

(NORTHEAST ATLANTA)

084° 05' 20.66" W
034° 03' 05.19" N

UNITED STATES
DEPARTMENT OF THE INTERIOR
GEOLOGICAL SURVEY



(SOUTHWEST ATLANTA)

(REDAN)

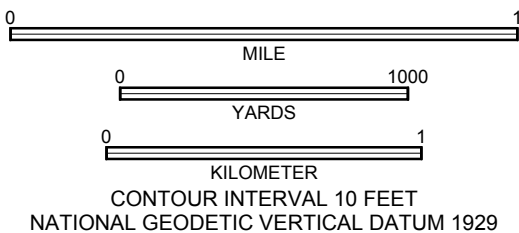
(RIVERDALE)

(STOCKBRIDGE)

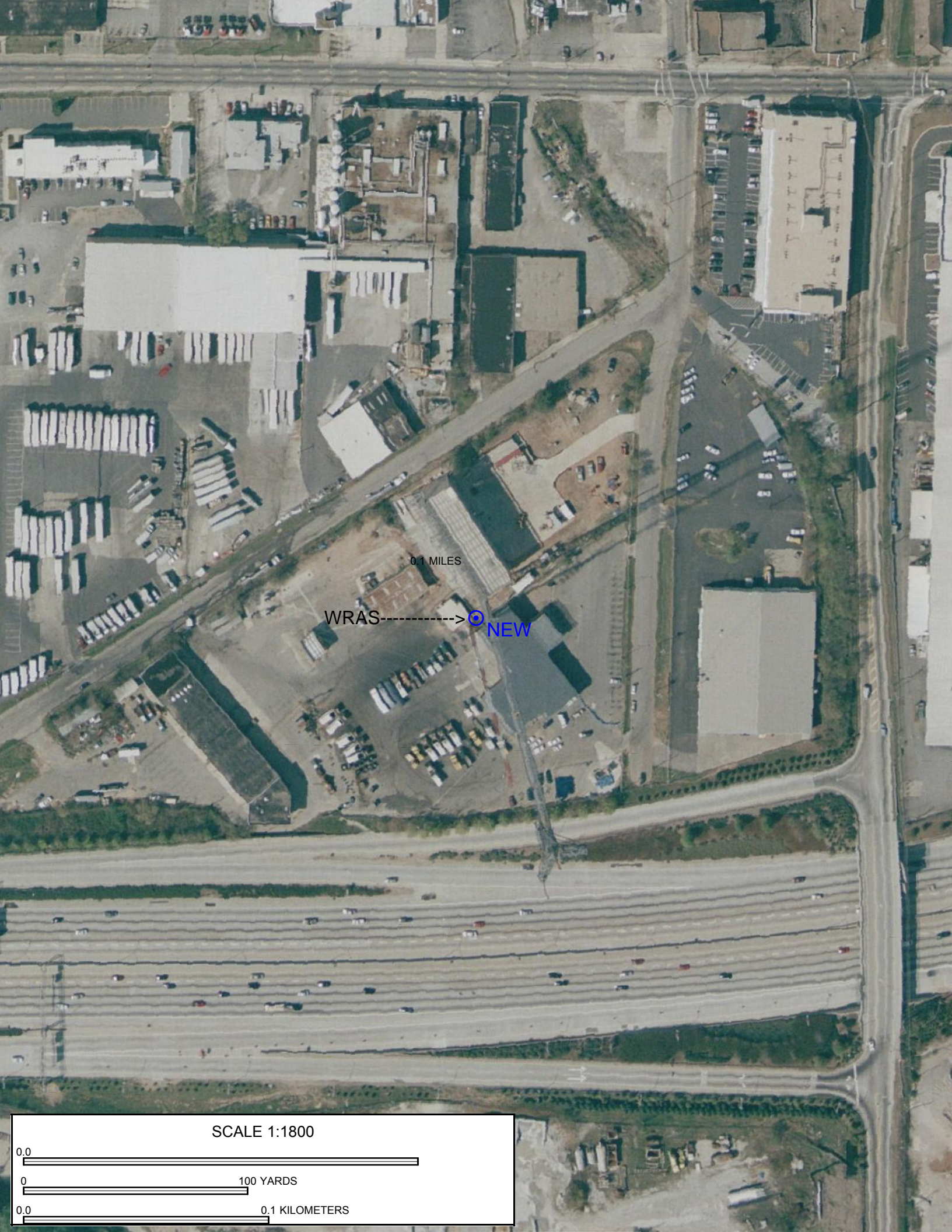
Declination

(JONESBORO)
SCALE 1:24000

GN 1.46° E
MN 4.88° W



SOUTHEAST ATLANTA, GA
1954



0.1 MILES

WRAS----->⊙ NEW

SCALE 1:1800

0.0

0 100 YARDS

0.0 0.1 KILOMETERS