

**TECHNICAL EXHIBIT  
RE: CONTROLLED RF ENVIRONMENT  
MONTECITO FM, INC.**

Montecito FM, Inc. (“Montecito FM”) is requesting authority to construct a new auxiliary antenna facility for KJEE based on the technical specifications initially authorized for the station’s main facility in BPH-20151124EHB, which is being modified in a concurrent application filing to propose a different site for the main antenna. This technical exhibit provides documentation of compliance concerning radiofrequency (RF) exposure and demonstrates that the proposed auxiliary antenna is categorically excluded from environmental processing under Section 1.1306. All information contained in this statement was determined in accordance with the FCC Rules.

KJEE is currently authorized in BPH-20151124EHB to relocate its main facility to another existing antenna-supporting structure sited at the Gibraltar Peak Radio Site, which is an established antenna farm area where other similar antenna structures are clustered.<sup>1</sup> This multi-user site is located at 3035 Gibraltar Road in Santa Barbara, California and it is owned and managed by Community Radio Inc. (“Community Radio”). As shown in Photo 1, the site is situated on top of Gibraltar Peak, which is an isolated mountain ridge. Photo 1 also shows the proposed auxiliary antenna site in relation to the present and proposed



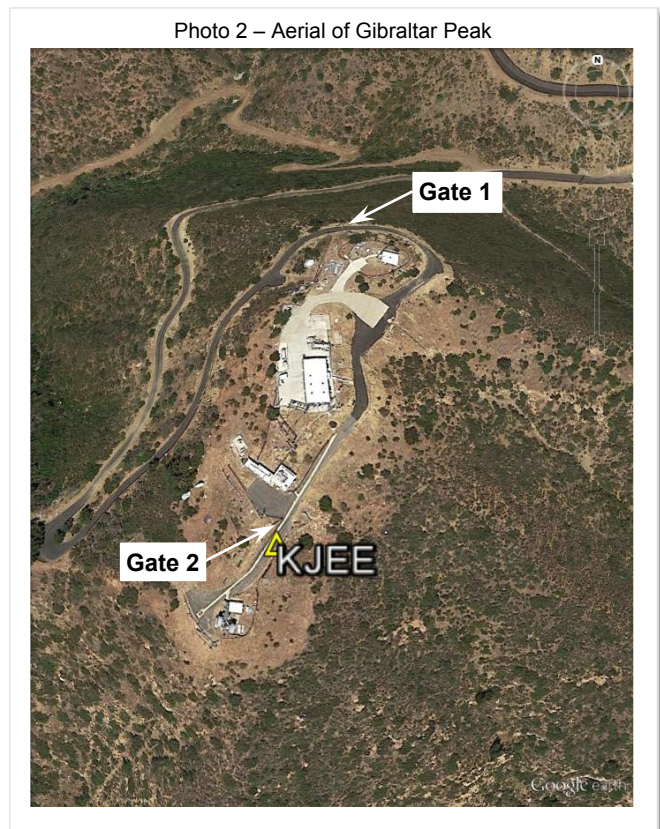
<sup>1</sup> Gibraltar Peak is located in the Santa Ynez Mountains and Los Padres National Forest in Santa Barbara County, CA. It is not an officially designated antenna farm.



main facility locations.

The aforementioned construction permit authorizes KJEE to move its main antenna to the existing wooden pole where FM station KSBL was previously licensed to operate. Prior to abandoning this site several years ago, KSBL was licensed to operate a ERI Rototiller Series 1-bay antenna side mounted on the pole at a radiation center height above ground level of 6 meters with an effective radiated power (ERP) of 0.99 kW.<sup>2</sup> KJEE is authorized to operate in the same way, but at the slightly lower ERP of 0.842 kW. Montecito FM is now seeking authority to move its main antenna to a different location and utilize the old KSBL site for its auxiliary antenna. KJEE will also employ a ERI Rototiller Series 1-bay antenna for its auxiliary facility, which is an EPA Type 3 dipole.

Access to the Gibraltar Peak Radio Site by the general public is restricted. The roadway to the site is blocked by a locked gate and security fencing and warning signs are in place along all public roads and on all accessible slopes. In the lower section of the site where KJEE's auxiliary antenna will be located, additional fencing and a second locked gate are used to further restrict access. The locations of the two gates are depicted in Photo 2. This image also shows the mountainous nature of the site. As can be observed in Photo 3 below, there are signs posted at the first gate to prohibit trespassing and to establish public awareness of the potential for RF exposure.



The site is also equipped with sufficient controls to prevent occupational exposure to RF fields in excess of the FCC guidelines (OET Bulletin 65, Edition 97-01). Specifically, Community Radio has adopted a comprehensive RF site plan for implementing certain

<sup>2</sup> See BMLH-19991022ABO, Facility Id 35592, Channel 269A Carpinteria, California.





controls, including suitable barriers and RF safety signs, to alert site-users of the potential for exposure in excess of the FCC exposure guidelines. This plan is based on actual RF measurements and it is periodically updated to cover new station construction and changes to existing facilities. It indicates that personal RF exposure monitors are expected to be worn in all designated areas and prior to working on a supporting structure or in certain restricted areas, certain non-exempt stations must be contacted to reduce power or shut off their transmitters. The last update was completed on January 23, 2017. Examples of the RF safety signs posted throughout the site are shown in Photos 3 thru 5 below.

Photo 3 – Gate 1



Photo 5 – Example of a posted warning sign

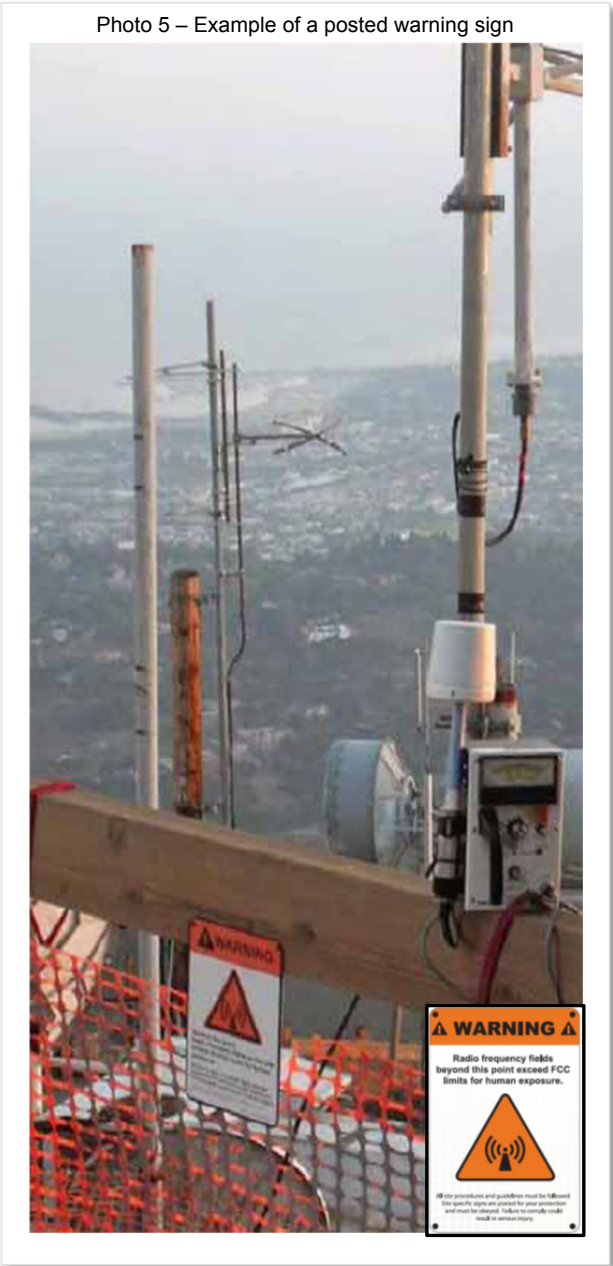


Photo 4 – Sign posted on a similar antenna structure





Because KJEE's transmitting antenna will be collocated on an existing structure within an established antenna farm, its facility does not fall within the criteria set forth in Section 1.1307(a) for certain types of facilities that may significantly affect the environment and for which additional environmental processing is required. Given that access by the general public is restricted and previous RF measurements of the former KSBL facility demonstrated compliance with the health and safety guidelines cited in Section 1.1307(b), it is anticipated that the proposed auxiliary antenna for KJEE will not significantly impact the current RF environment. A routine post construction update of Community Radio's comprehensive RF site plan will nevertheless be completed to accommodate the new auxiliary antenna. Accordingly, this application is categorically excluded from environmental processing by Section 1.1306.

Prepared by,

Scott Turpie  
Technical Consultant  
Lohnes and Culver LLC  
P.O. Box 881  
Silver Spring, MD 20918-0881  
(301)776-4488

May 2017