

## Exhibit 10

The purpose of this application for license is to specify replacement of KITU-DT's main digital antenna under 73.1690(c)(3) wherein the licensee is replacing a directional TV antenna by a license modification application, if the proposed horizontal theoretical directional antenna pattern does not exceed the licensed horizontal directional antenna pattern at any azimuth and where no change in effective radiated power will result. The modification of license application on Form 302-TV contains all of the data set forth in §73.685(f).

Transmitter equipment remains the same as licensed and therefore the original equipment measurements performed pursuant to the original license application remain valid.

Frequency measurements are on file.

A statement providing data on the environmental levels of RF energy in the vicinity of the transmitter site is included.

Submitted by:



Warren B. Miller  
Technical Consultant for  
Community Educational TV, Inc.

October 15, 2006

***PRELIMINARY SPECIFICATION FOR  
DUAL ADJACENT CHANNEL TRASAR<sup>®</sup> HORIZONTALLY POLARIZED  
COAXIAL SLOTTED ARRAY ANTENNA***

*Prepared for  
KITU-TV Channel 34 & KITU-DT Channel 33 Beaumont, TX  
November 4, 2005*

**ANTENNA TYPE:  
ATW25H3-HTC1U-34H**

**SPECIFICATION NO :  
KO110405-1565**



## PRELIMINARY SPECIFICATION FOR DUAL ADJACENT CHANNEL TRASAR<sup>®</sup> HORIZONTALLY POLARIZED COAXIAL SLOTTED ARRAY ANTENNA

### ELECTRICAL CHARACTERISTICS:

CHANNEL :	NTSC	34
	DTV :	33
FREQUENCY RANGE :	NTSC	590 - 596 MHz
	DTV :	584 - 590 MHz
AZIMUTH PATTERN NUMBER :		CH34HAZ-C1
ELEVATION PATTERN NUMBER :	NTSC	ATW25H3H
	DTV :	ATW25H55
AZIMUTH DIRECTIVITY :	NTSC	1.60 (2.04 dBd)
	DTV :	1.60 (2.04 dBd)
ELEVATION DIRECTIVITY :	NTSC	25.00 (13.98 dBd)
	DTV :	25.00 (13.98 dBd)
PEAK POWER GAIN :	NTSC	40.00 (16.02 dBd)
	DTV :	40.00 (16.02 dBd)
GAIN AT HORIZONTAL :	NTSC	27.16 (14.34 dBd)
	DTV :	11.71 (10.68 dBd)
ELECTRICAL BEAM TILT :	NTSC	0.75 Degrees
	DTV :	1.25 Degrees
INPUT POWER REQUIRED :	NTSC	29.25 kW (14.66 dBk)
	DTV :	12.50 kW (10.97 dBk)
INPUT TYPE :		6 1/8-75 Ohm
INPUT POWER MAXIMUM :		60 kW, Average
ANTENNA VSWR (MAXIMUM) :	NTSC	1.05 Over Visual Carrier 1.08 Over Sub-carrier 1.10 Over Remainder of Channel
	DTV :	1.10 Over 6MHz Channel

## PRELIMINARY SPECIFICATION FOR DUAL ADJACENT CHANNEL TRASAR<sup>®</sup> HORIZONTALLY POLARIZED COAXIAL SLOTTED ARRAY ANTENNA

### MECHANICAL CHARACTERISTICS:

#### MOUNTING CONFIGURATION:

Top Mount\*

\*(Tower Interface supplied and installed by others)

HEIGHT OF ANTENNA : 47.80 feet

HEIGHT OF CENTER OF RADIATION (B) : 23.90 feet

OVERALL HEIGHT (A) : 50.80 feet  
(Includes two 3-foot Lightning Rods)

DEICING : Pressurized Radome Enclosure

RADOME DIAMETER (C): 16.40 inches, OD

RADOME COLOR : AVIATION ORANGE (Standard)

CLIMBING DEVICE : Galvanized Climbing Pole

CALCULATED WEIGHT : 8400.00 lbs

WINDLOAD DATA<sup>2</sup> : CaAa : 68.0 sq.ft.  
EFFECTIVE MOMENT ARM : 23.9 feet

MOUNTING FLANGE : BOLT CIRCLE : 20.00 in.  
BOLT DIAMETER : 1.25 in.  
NUMBER OF BOLTS : 16

**This antenna is designed to be supported by a structure that can resist the antenna base reactions and which provides a support that is rigid in the three translational and three rotational degrees of freedom.**

1 Calculated weight is based on the **PRELIMINARY** design of the antenna. The actual weight of the antenna will be within  $\pm 10\%$  of the calculated weight. The actual weight will be given in the technical manual that accompanies the antenna. This figure is for the antenna only and does not include the antenna input section.

2 Based on a wind speed of 100 miles per hour (MPH), a height above average terrain (HAAT) of 1,023 feet, and a height above ground level (HAGL) of 1,023 feet per EIA/TIA-222-F. CaAa values include lightning spurs & beacon.

**NOTE:** County is within 100 miles from hurricane oceanline. Tabulated values of basic wind speed have been adjusted in accordance with ASCE 7-88 to obtain a 50-year recurrence intervals. Site may be within a special wind region indicated on ASCE- 7-88 map. Localized conditions may require higher wind speed specifications than TIA/EIA specifications. Check with local authorities to verify wind speed requirements.

## Broadcast Antenna System

### Power Analysis

**KITU-TV**  
**Beaumont, TX**  
**ATW25H3-HTC1U-34H**

**Channel 34**

#### ANTENNA PARAMETERS :

##### Azimuth Directivity :

Hor. Pol : 1.60  
 dBd : 2.04

##### Elevation Directivity :

Hor. Pol : 25.00  
 dBd : 13.98

#### TRANSMISSION LINE :

##### VERTICAL RUN :

Type: 6 1/8-75 Ohm Rigid Line  
 Length, ft. : 1000  
 Attenuation , dB/100 ft: 0.119

##### HORIZONTAL RUN :

Type: 6 1/8-75 Ohm Rigid Line  
 Length, ft. : 50  
 Attenuation , dB/100 ft: 0.119

##### OTHER LINE LOSSES:

Type: N/A  
 Length, ft. : 0  
 Attenuation , dB/100 ft: 0

Line Efficiency : 75.00%

#### ERP :

kW : 1170.00  
 dBk : 30.68

#### POWER GAIN :

Ratio : 40.00  
 dBd : 16.02

#### ANTENNA INPUT :

kW : 29.25  
 dBk : 14.66

#### LINE LOSS :

kW : 9.75  
 dB : 1.25

#### COMBINER LOSS

kW : 4.26  
 dB : 0.45

#### TRANSMITTER POWER :

kW : 43.26  
 dBk : 16.36

## Broadcast Antenna System Power Analysis

**KITU-DT**  
**Beaumont, TX**  
**ATW25H3-HTC1U-34H**

**Channel 33**

### ANTENNA PARAMETERS :

#### Azimuth Directivity :

Hor. Pol : 1.60  
dBd : 2.04

#### Elevation Directivity :

Hor. Pol : 25.00  
dBd : 13.98

### TRANSMISSION LINE :

#### VERTICAL RUN :

Type: 6 1/8-75 Ohm Rigid Line  
Length, ft. : 1000  
Attenuation , dB/100 ft: 0.1185

#### HORIZONTAL RUN :

Type: 6 1/8-75 Ohm Rigid Line  
Length, ft. : 50  
Attenuation , dB/100 ft: 0.1185

#### OTHER LINE LOSSES:

Type: N/A  
Length, ft. : 0  
Attenuation , dB/100 ft: 0

Line Efficiency : 75.09%

### ERP :

kW : 500.00  
dBk : 26.99

### POWER GAIN :

Ratio : 40.00  
dBd : 16.02

### ANTENNA INPUT :

kW : 12.50  
dBk : 10.97

### LINE LOSS :

kW : 4.15  
dB : 1.24

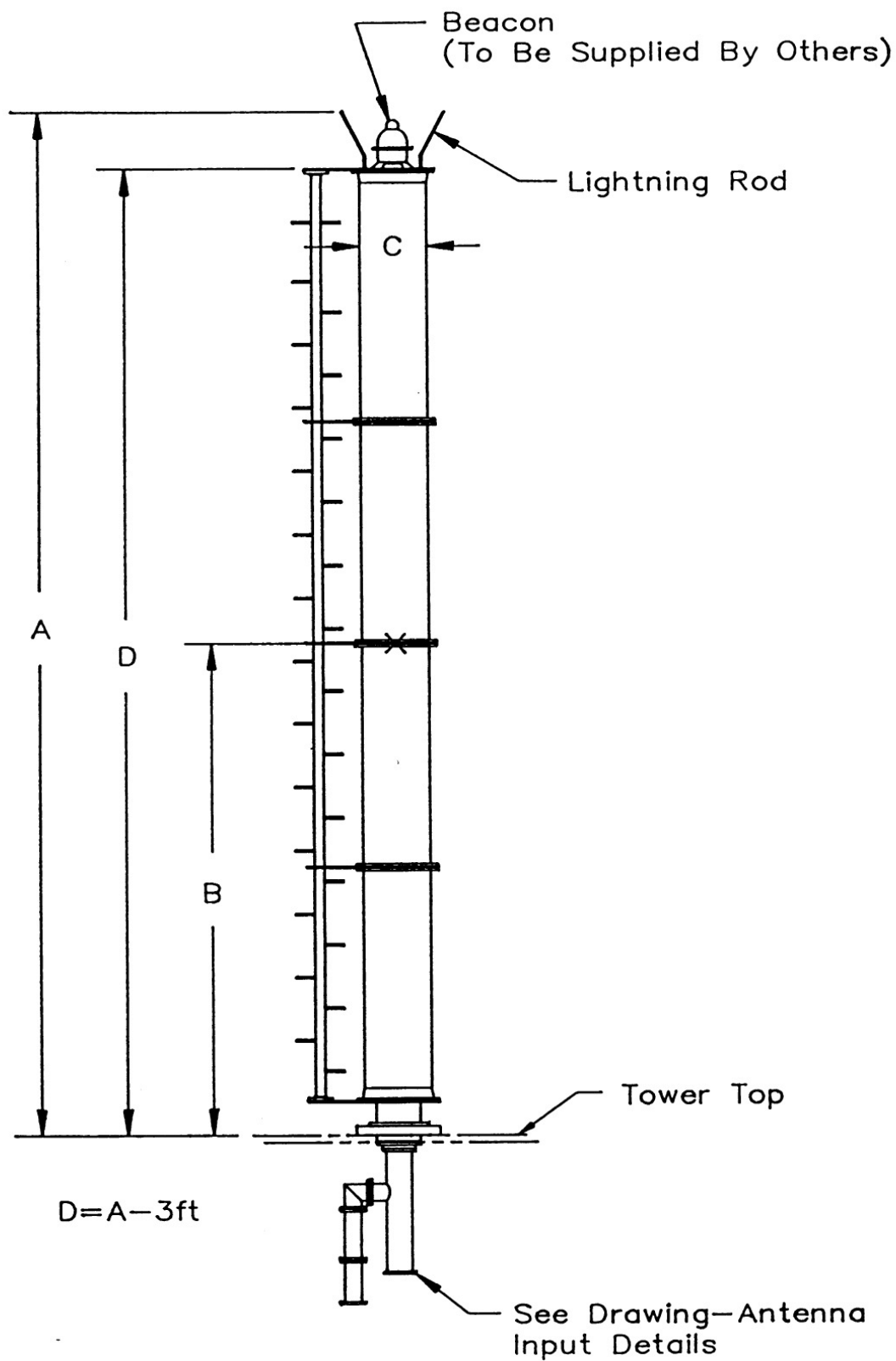
### COMBINER LOSS

kW : 1.82  
dB : 0.45

### TRANSMITTER POWER :

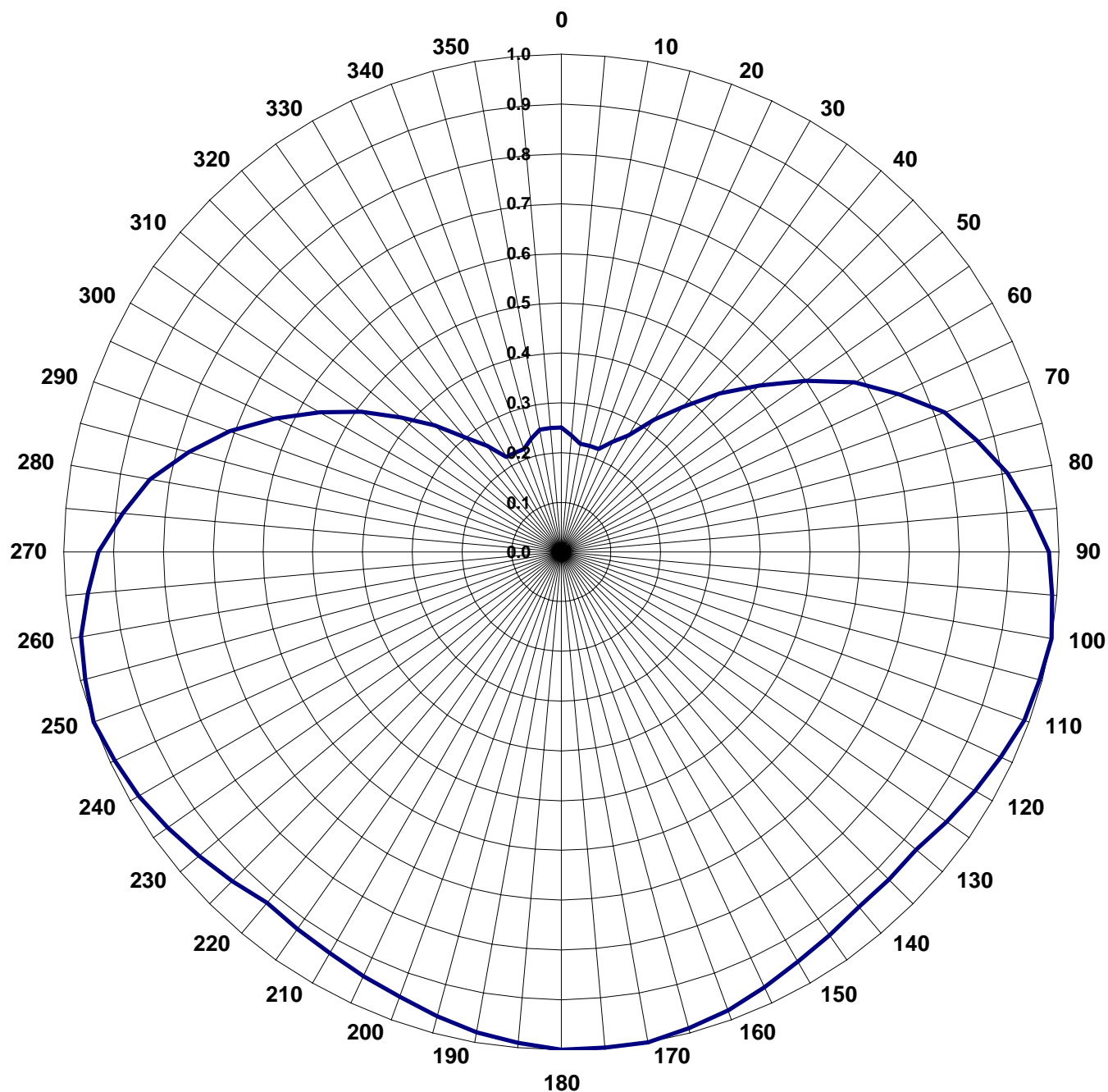
kW : 18.46  
dBk : 12.66

TYPICAL MOUNTING CONFIGURATION SHOWN. ACTUAL CONFIGURATION MAY VARY.



**AZIMUTH PATTERN****TYPE:****CH34HAZ-C1****Frequency:****34 (Analog)****Numeric****dB****Location:****Beaumont, TX****Directivity:****1.60****2.04****Polarization:****Horizontal****Peak(s) at:**

Note: Pattern shape and directivity may vary with  
channel and mounting configuration.





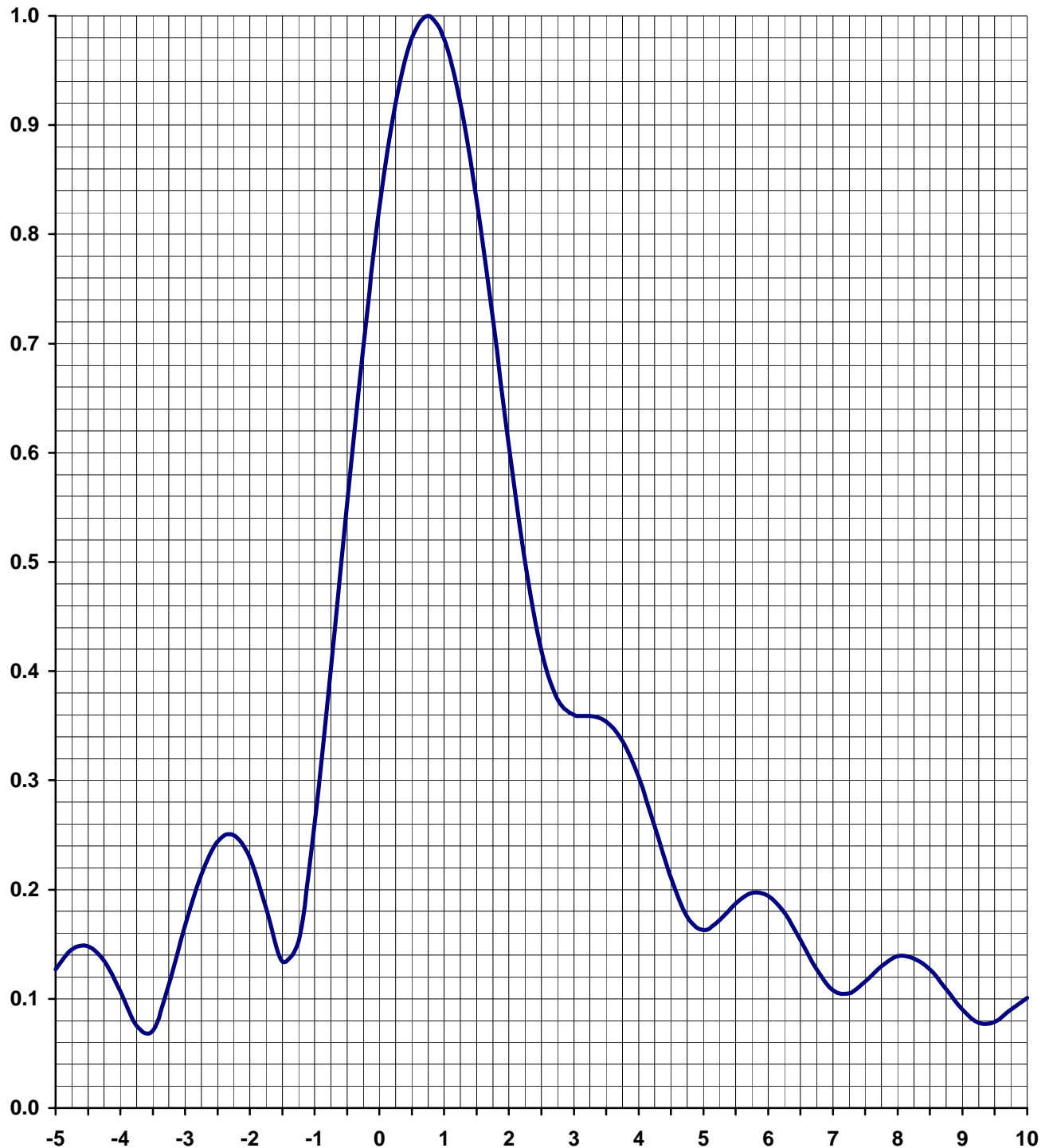
**TABULATED DATA FOR AZIMUTH PATTERN****TYPE: CH34HAZ-C1**

ANGLE	FIELD	dB	ANGLE	FIELD	dB	ANGLE	FIELD	dB	ANGLE	FIELD	dB
0	0.250	-12.041	92	0.984	-0.140	184	0.992	-0.070	276	0.876	-1.150
2	0.244	-12.252	94	0.988	-0.105	186	0.988	-0.105	278	0.858	-1.330
4	0.238	-12.468	96	0.992	-0.070	188	0.984	-0.140	280	0.840	-1.514
6	0.232	-12.690	98	0.996	-0.035	190	0.980	-0.175	282	0.814	-1.788
8	0.226	-12.918	100	1.000	0.000	192	0.974	-0.229	284	0.788	-2.069
10	0.220	-13.152	102	0.998	-0.017	194	0.968	-0.282	286	0.762	-2.361
12	0.220	-13.152	104	0.996	-0.035	196	0.962	-0.336	288	0.736	-2.662
14	0.220	-13.152	106	0.994	-0.052	198	0.956	-0.391	290	0.710	-2.975
16	0.220	-13.152	108	0.992	-0.070	200	0.950	-0.446	292	0.680	-3.350
18	0.220	-13.152	110	0.990	-0.087	202	0.946	-0.482	294	0.650	-3.742
20	0.220	-13.152	112	0.984	-0.140	204	0.942	-0.519	296	0.620	-4.152
22	0.230	-12.765	114	0.978	-0.193	206	0.938	-0.556	298	0.590	-4.583
24	0.240	-12.396	116	0.972	-0.247	208	0.934	-0.593	300	0.560	-5.036
26	0.250	-12.041	118	0.966	-0.300	210	0.930	-0.630	302	0.532	-5.482
28	0.260	-11.701	120	0.960	-0.355	212	0.928	-0.649	304	0.504	-5.951
30	0.270	-11.373	122	0.954	-0.409	214	0.926	-0.668	306	0.476	-6.448
32	0.292	-10.692	124	0.948	-0.464	216	0.924	-0.687	308	0.448	-6.974
34	0.314	-10.061	126	0.942	-0.519	218	0.922	-0.705	310	0.420	-7.535
36	0.336	-9.473	128	0.936	-0.574	220	0.920	-0.724	312	0.396	-8.046
38	0.358	-8.922	130	0.930	-0.630	222	0.926	-0.668	314	0.372	-8.589
40	0.380	-8.404	132	0.930	-0.630	224	0.932	-0.612	316	0.348	-9.168
42	0.408	-7.787	134	0.930	-0.630	226	0.938	-0.556	318	0.324	-9.789
44	0.436	-7.210	136	0.930	-0.630	228	0.944	-0.501	320	0.300	-10.458
46	0.464	-6.670	138	0.930	-0.630	230	0.950	-0.446	322	0.284	-10.934
48	0.492	-6.161	140	0.930	-0.630	232	0.956	-0.391	324	0.268	-11.437
50	0.520	-5.680	142	0.934	-0.593	234	0.962	-0.336	326	0.252	-11.972
52	0.552	-5.161	144	0.938	-0.556	236	0.968	-0.282	328	0.236	-12.542
54	0.584	-4.672	146	0.942	-0.519	238	0.974	-0.229	330	0.220	-13.152
56	0.616	-4.208	148	0.946	-0.482	240	0.980	-0.175	332	0.220	-13.152
58	0.648	-3.768	150	0.950	-0.446	242	0.984	-0.140	334	0.220	-13.152
60	0.680	-3.350	152	0.956	-0.391	244	0.988	-0.105	336	0.220	-13.152
62	0.708	-2.999	154	0.962	-0.336	246	0.992	-0.070	338	0.220	-13.152
64	0.736	-2.662	156	0.968	-0.282	248	0.996	-0.035	340	0.220	-13.152
66	0.764	-2.338	158	0.974	-0.229	250	1.000	0.000	342	0.226	-12.918
68	0.792	-2.025	160	0.980	-0.175	252	0.996	-0.035	344	0.232	-12.690
70	0.820	-1.724	162	0.984	-0.140	254	0.992	-0.070	346	0.238	-12.468
72	0.838	-1.535	164	0.988	-0.105	256	0.988	-0.105	348	0.244	-12.252
74	0.856	-1.351	166	0.992	-0.070	258	0.984	-0.140	350	0.250	-12.041
76	0.874	-1.170	168	0.996	-0.035	260	0.980	-0.175	352	0.250	-12.041
78	0.892	-0.993	170	1.000	0.000	262	0.970	-0.265	354	0.250	-12.041
80	0.910	-0.819	172	1.000	0.000	264	0.960	-0.355	356	0.250	-12.041
82	0.924	-0.687	174	1.000	0.000	266	0.950	-0.446	358	0.250	-12.041
84	0.938	-0.556	176	1.000	0.000	268	0.940	-0.537	360	0.250	-12.041
86	0.952	-0.427	178	1.000	0.000	270	0.930	-0.630			
88	0.966	-0.300	180	1.000	0.000	272	0.912	-0.800			
90	0.980	-0.175	182	0.996	-0.035	274	0.894	-0.973			

**ELEVATION PATTERN**

<b>TYPE:</b>	<b>ATW25H3H</b>	
<b>Directivity:</b>	<b>Numeric</b>	<b>dBd</b>
<b>Main Lobe:</b>	<b>25.00</b>	<b>13.98</b>
<b>Horizontal:</b>	<b>16.97</b>	<b>12.30</b>

<b>Frequency:</b>	<b>34 (Analog)</b>
<b>Location:</b>	<b>Beaumont, TX</b>
<b>Beam Tilt:</b>	<b>0.75</b>
<b>Polarization:</b>	<b>Horizontal</b>



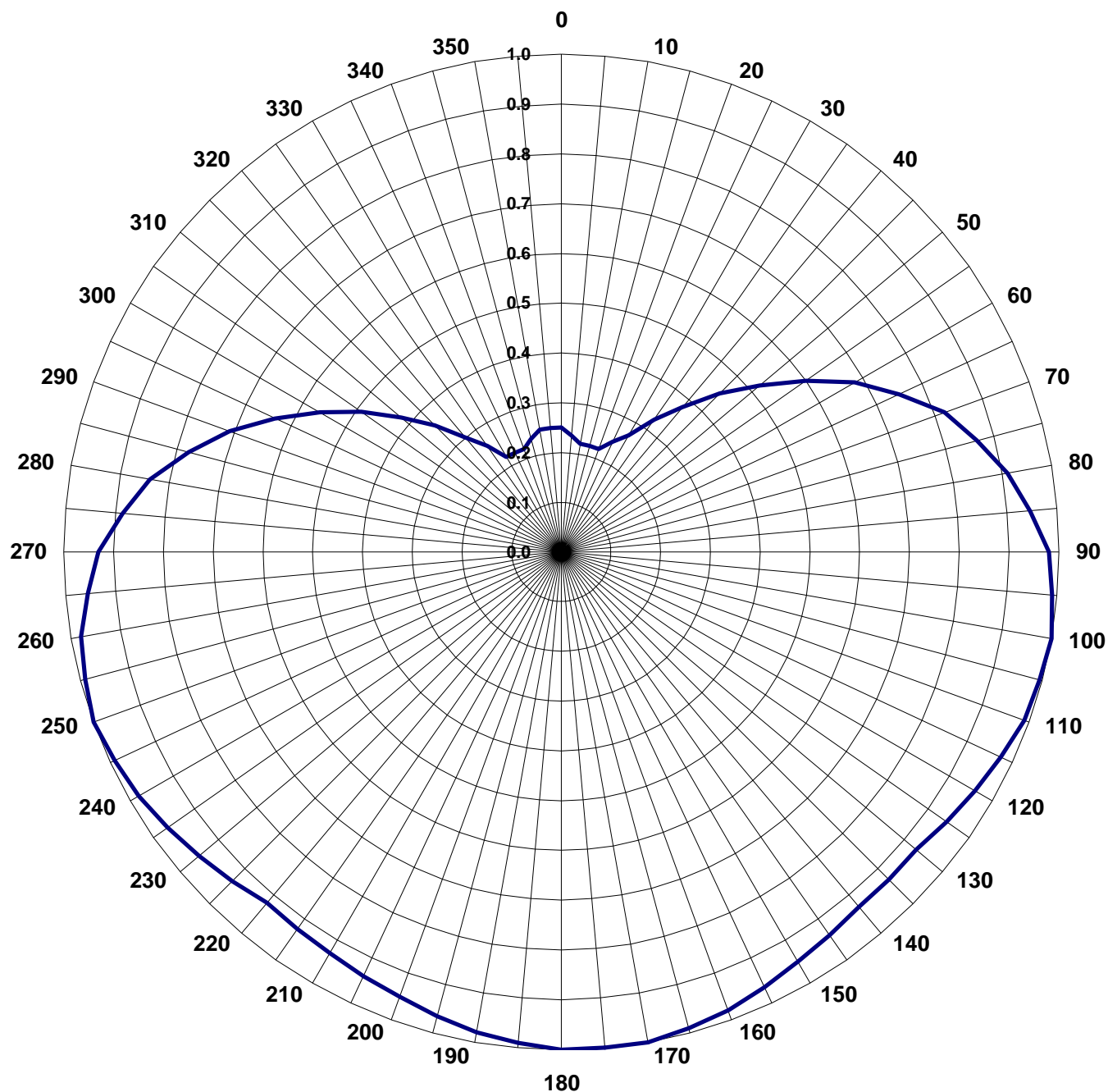
**TABULATED DATA FOR ELEVATION PATTERN****ATW25H3H****-5 to 10 degrees in 0.25 increments****10 to 90 degrees in 0.50 increments**

ANGLE	FIELD	dB	ANGLE	FIELD	dB	ANGLE	FIELD	dB	ANGLE	FIELD	dB	ANGLE	FIELD	dB
-5.00	0.127	-17.92	6.75	0.127	-17.92	27.00	0.035	-29.12	50.50	0.021	-33.56	74.00	0.021	-33.56
-4.75	0.145	-16.77	7.00	0.108	-19.33	27.50	0.023	-32.77	51.00	0.031	-30.17	74.50	0.028	-31.06
-4.50	0.148	-16.59	7.25	0.105	-19.58	28.00	0.028	-31.06	51.50	0.036	-28.87	75.00	0.033	-29.63
-4.25	0.135	-17.39	7.50	0.116	-18.71	28.50	0.038	-28.40	52.00	0.035	-29.12	75.50	0.037	-28.64
-4.00	0.107	-19.41	7.75	0.130	-17.72	29.00	0.040	-27.96	52.50	0.028	-31.06	76.00	0.040	-27.96
-3.75	0.075	-22.50	8.00	0.139	-17.14	29.50	0.031	-30.17	53.00	0.018	-34.89	76.50	0.042	-27.54
-3.50	0.071	-22.97	8.25	0.137	-17.27	30.00	0.021	-33.56	53.50	0.012	-38.42	77.00	0.042	-27.54
-3.25	0.113	-18.94	8.50	0.127	-17.92	30.50	0.027	-31.37	54.00	0.020	-33.98	77.50	0.041	-27.74
-3.00	0.167	-15.55	8.75	0.109	-19.25	31.00	0.037	-28.64	54.50	0.029	-30.75	78.00	0.040	-27.96
-2.75	0.214	-13.39	9.00	0.090	-20.92	31.50	0.038	-28.40	55.00	0.035	-29.12	78.50	0.037	-28.64
-2.50	0.244	-12.25	9.25	0.078	-22.16	32.00	0.030	-30.46	55.50	0.036	-28.87	79.00	0.034	-29.37
-2.25	0.250	-12.04	9.50	0.079	-22.05	32.50	0.020	-33.98	56.00	0.032	-29.90	79.50	0.030	-30.46
-2.00	0.229	-12.80	9.75	0.090	-20.92	33.00	0.024	-32.40	56.50	0.023	-32.77	80.00	0.026	-31.70
-1.75	0.183	-14.75	10.00	0.101	-19.91	33.50	0.034	-29.37	57.00	0.013	-37.72	80.50	0.022	-33.15
-1.50	0.134	-17.46	10.50	0.106	-19.49	34.00	0.037	-28.64	57.50	0.012	-38.42	81.00	0.018	-34.89
-1.25	0.153	-16.31	11.00	0.083	-21.62	34.50	0.030	-30.46	58.00	0.021	-33.56	81.50	0.015	-36.48
-1.00	0.260	-11.70	11.50	0.060	-24.44	35.00	0.019	-34.42	58.50	0.030	-30.46	82.00	0.011	-39.17
-0.75	0.402	-7.92	12.00	0.073	-22.73	35.50	0.021	-33.56	59.00	0.036	-28.87	82.50	0.008	-41.94
-0.50	0.554	-5.13	12.50	0.088	-21.11	36.00	0.031	-30.17	59.50	0.037	-28.64	83.00	0.005	-46.02
-0.25	0.698	-3.12	13.00	0.078	-22.16	36.50	0.036	-28.87	60.00	0.033	-29.63	83.50	0.003	-50.46
0.00	0.824	-1.68	13.50	0.054	-25.35	37.00	0.032	-29.90	60.50	0.026	-31.70	84.00	0.002	-53.98
0.25	0.920	-0.72	14.00	0.052	-25.68	37.50	0.022	-33.15	61.00	0.016	-35.92	84.50	0.003	-50.46
0.50	0.980	-0.18	14.50	0.069	-23.22	38.00	0.017	-35.39	61.50	0.008	-41.94	85.00	0.004	-47.96
0.75	1.000	0.00	15.00	0.072	-22.85	38.50	0.026	-31.70	62.00	0.014	-37.08	85.50	0.005	-46.02
1.00	0.979	-0.18	15.50	0.055	-25.19	39.00	0.034	-29.37	62.50	0.024	-32.40	86.00	0.005	-46.02
1.25	0.920	-0.72	16.00	0.041	-27.74	39.50	0.034	-29.37	63.00	0.032	-29.90	86.50	0.006	-44.44
1.50	0.831	-1.61	16.50	0.052	-25.68	40.00	0.027	-31.37	63.50	0.037	-28.64	87.00	0.005	-46.02
1.75	0.722	-2.83	17.00	0.062	-24.15	40.50	0.017	-35.39	64.00	0.038	-28.40	87.50	0.005	-46.02
2.00	0.607	-4.34	17.50	0.055	-25.19	41.00	0.019	-34.42	64.50	0.036	-28.87	88.00	0.004	-47.96
2.25	0.500	-6.02	18.00	0.038	-28.40	41.50	0.029	-30.75	65.00	0.030	-30.46	88.50	0.003	-50.46
2.50	0.419	-7.56	18.50	0.038	-28.40	42.00	0.035	-29.12	65.50	0.022	-33.15	89.00	0.002	-53.98
2.75	0.374	-8.54	19.00	0.052	-25.68	42.50	0.033	-29.63	66.00	0.012	-38.42	89.50	0.001	-60.00
3.00	0.360	-8.87	19.50	0.055	-25.19	43.00	0.024	-32.40	66.50	0.005	-46.02	90.00	0.000	---
3.25	0.359	-8.90	20.00	0.042	-27.54	43.50	0.015	-36.48	67.00	0.012	-38.42			
3.50	0.354	-9.02	20.50	0.030	-30.46	44.00	0.019	-34.42	67.50	0.022	-33.15			
3.75	0.336	-9.47	21.00	0.038	-28.40	44.50	0.029	-30.75	68.00	0.030	-30.46			
4.00	0.303	-10.37	21.50	0.049	-26.20	45.00	0.035	-29.12	68.50	0.036	-28.87			
4.25	0.258	-11.77	22.00	0.046	-26.74	45.50	0.033	-29.63	69.00	0.039	-28.18			
4.50	0.211	-13.51	22.50	0.033	-29.63	46.00	0.025	-32.04	69.50	0.040	-27.96			
4.75	0.175	-15.14	23.00	0.027	-31.37	46.50	0.015	-36.48	70.00	0.039	-28.18			
5.00	0.163	-15.76	23.50	0.039	-28.18	47.00	0.018	-34.89	70.50	0.035	-29.12			
5.25	0.172	-15.29	24.00	0.046	-26.74	47.50	0.028	-31.06	71.00	0.029	-30.75			
5.50	0.187	-14.56	24.50	0.039	-28.18	48.00	0.034	-29.37	71.50	0.022	-33.15			
5.75	0.197	-14.11	25.00	0.026	-31.70	48.50	0.035	-29.12	72.00	0.013	-37.72			
6.00	0.194	-14.24	25.50	0.028	-31.06	49.00	0.029	-30.75	72.50	0.004	-47.96			
6.25	0.179	-14.94	26.00	0.040	-27.96	49.50	0.019	-34.42	73.00	0.005	-46.02			
6.50	0.154	-16.25	26.50	0.043	-27.33	50.00	0.014	-37.08	73.50	0.013	-37.72			

## AZIMUTH PATTERN

**TYPE:****CH33HAZ-C1****Frequency:****33 (Digital)****Numeric****dB****Location:****Beaumont, TX****Directivity:****1.60****2.04****Polarization:****Horizontal****Peak(s) at:**

Note: Pattern shape and directivity may vary with channel and mounting configuration.

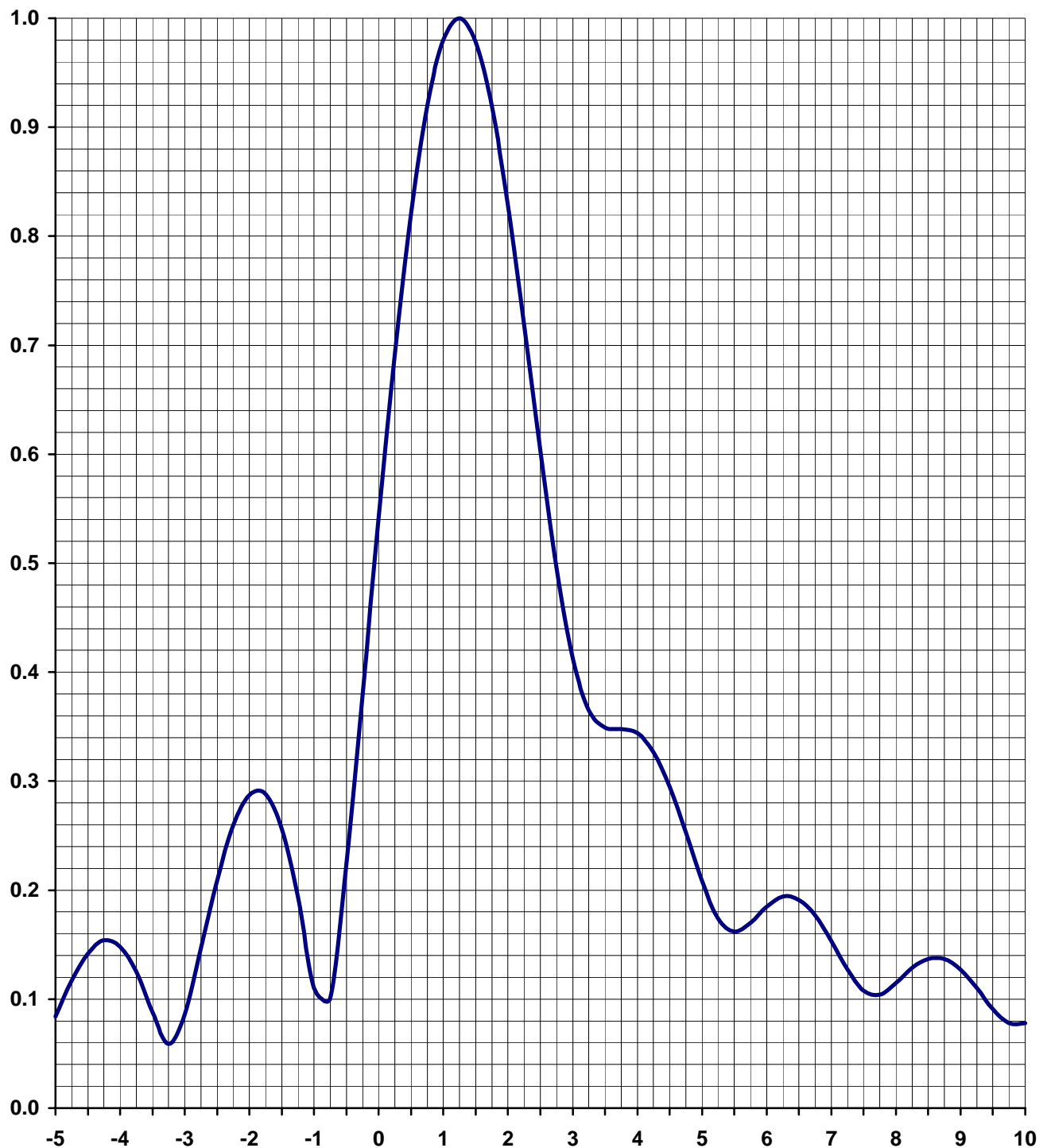


**TABULATED DATA FOR AZIMUTH PATTERN****TYPE: CH33HAZ-C1**

ANGLE	FIELD	dB	ANGLE	FIELD	dB	ANGLE	FIELD	dB	ANGLE	FIELD	dB
0	0.250	-12.041	92	0.984	-0.140	184	0.992	-0.070	276	0.876	-1.150
2	0.244	-12.252	94	0.988	-0.105	186	0.988	-0.105	278	0.858	-1.330
4	0.238	-12.468	96	0.992	-0.070	188	0.984	-0.140	280	0.840	-1.514
6	0.232	-12.690	98	0.996	-0.035	190	0.980	-0.175	282	0.814	-1.788
8	0.226	-12.918	100	1.000	0.000	192	0.974	-0.229	284	0.788	-2.069
10	0.220	-13.152	102	0.998	-0.017	194	0.968	-0.282	286	0.762	-2.361
12	0.220	-13.152	104	0.996	-0.035	196	0.962	-0.336	288	0.736	-2.662
14	0.220	-13.152	106	0.994	-0.052	198	0.956	-0.391	290	0.710	-2.975
16	0.220	-13.152	108	0.992	-0.070	200	0.950	-0.446	292	0.680	-3.350
18	0.220	-13.152	110	0.990	-0.087	202	0.946	-0.482	294	0.650	-3.742
20	0.220	-13.152	112	0.984	-0.140	204	0.942	-0.519	296	0.620	-4.152
22	0.230	-12.765	114	0.978	-0.193	206	0.938	-0.556	298	0.590	-4.583
24	0.240	-12.396	116	0.972	-0.247	208	0.934	-0.593	300	0.560	-5.036
26	0.250	-12.041	118	0.966	-0.300	210	0.930	-0.630	302	0.532	-5.482
28	0.260	-11.701	120	0.960	-0.355	212	0.928	-0.649	304	0.504	-5.951
30	0.270	-11.373	122	0.954	-0.409	214	0.926	-0.668	306	0.476	-6.448
32	0.292	-10.692	124	0.948	-0.464	216	0.924	-0.687	308	0.448	-6.974
34	0.314	-10.061	126	0.942	-0.519	218	0.922	-0.705	310	0.420	-7.535
36	0.336	-9.473	128	0.936	-0.574	220	0.920	-0.724	312	0.396	-8.046
38	0.358	-8.922	130	0.930	-0.630	222	0.926	-0.668	314	0.372	-8.589
40	0.380	-8.404	132	0.930	-0.630	224	0.932	-0.612	316	0.348	-9.168
42	0.408	-7.787	134	0.930	-0.630	226	0.938	-0.556	318	0.324	-9.789
44	0.436	-7.210	136	0.930	-0.630	228	0.944	-0.501	320	0.300	-10.458
46	0.464	-6.670	138	0.930	-0.630	230	0.950	-0.446	322	0.284	-10.934
48	0.492	-6.161	140	0.930	-0.630	232	0.956	-0.391	324	0.268	-11.437
50	0.520	-5.680	142	0.934	-0.593	234	0.962	-0.336	326	0.252	-11.972
52	0.552	-5.161	144	0.938	-0.556	236	0.968	-0.282	328	0.236	-12.542
54	0.584	-4.672	146	0.942	-0.519	238	0.974	-0.229	330	0.220	-13.152
56	0.616	-4.208	148	0.946	-0.482	240	0.980	-0.175	332	0.220	-13.152
58	0.648	-3.768	150	0.950	-0.446	242	0.984	-0.140	334	0.220	-13.152
60	0.680	-3.350	152	0.956	-0.391	244	0.988	-0.105	336	0.220	-13.152
62	0.708	-2.999	154	0.962	-0.336	246	0.992	-0.070	338	0.220	-13.152
64	0.736	-2.662	156	0.968	-0.282	248	0.996	-0.035	340	0.220	-13.152
66	0.764	-2.338	158	0.974	-0.229	250	1.000	0.000	342	0.226	-12.918
68	0.792	-2.025	160	0.980	-0.175	252	0.996	-0.035	344	0.232	-12.690
70	0.820	-1.724	162	0.984	-0.140	254	0.992	-0.070	346	0.238	-12.468
72	0.838	-1.535	164	0.988	-0.105	256	0.988	-0.105	348	0.244	-12.252
74	0.856	-1.351	166	0.992	-0.070	258	0.984	-0.140	350	0.250	-12.041
76	0.874	-1.170	168	0.996	-0.035	260	0.980	-0.175	352	0.250	-12.041
78	0.892	-0.993	170	1.000	0.000	262	0.970	-0.265	354	0.250	-12.041
80	0.910	-0.819	172	1.000	0.000	264	0.960	-0.355	356	0.250	-12.041
82	0.924	-0.687	174	1.000	0.000	266	0.950	-0.446	358	0.250	-12.041
84	0.938	-0.556	176	1.000	0.000	268	0.940	-0.537	360	0.250	-12.041
86	0.952	-0.427	178	1.000	0.000	270	0.930	-0.630			
88	0.966	-0.300	180	1.000	0.000	272	0.912	-0.800			
90	0.980	-0.175	182	0.996	-0.035	274	0.894	-0.973			

**ELEVATION PATTERN**

<b>TYPE:</b>	<b>ATW25H55</b>		<b>Frequency:</b>	<b>33 (Digital)</b>
<b>Directivity:</b>	<b>Numeric</b>	<b>dBd</b>	<b>Location:</b>	<b>Beaumont, TX</b>
<b>Main Lobe:</b>	<b>25.00</b>	<b>13.98</b>	<b>Beam Tilt:</b>	<b>1.25</b>
<b>Horizontal:</b>	<b>7.32</b>	<b>8.64</b>	<b>Polarization:</b>	<b>Horizontal</b>



**TABULATED DATA FOR ELEVATION PATTERN****ATW25H55***-5 to 10 degrees in 0.25 increments**10 to 90 degrees in 0.50 increments*

ANGLE	FIELD	dB	ANGLE	FIELD	dB	ANGLE	FIELD	dB	ANGLE	FIELD	dB	ANGLE	FIELD	dB
-5.00	0.084	-21.51	6.75	0.177	-15.04	27.00	0.043	-27.33	50.50	0.024	-32.40	74.00	0.025	-32.04
-4.75	0.117	-18.64	7.00	0.153	-16.31	27.50	0.040	-27.96	51.00	0.015	-36.48	74.50	0.020	-33.98
-4.50	0.142	-16.95	7.25	0.127	-17.92	28.00	0.027	-31.37	51.50	0.015	-36.48	75.00	0.013	-37.72
-4.25	0.154	-16.25	7.50	0.108	-19.33	28.50	0.022	-33.15	52.00	0.024	-32.40	75.50	0.007	-43.10
-4.00	0.148	-16.59	7.75	0.104	-19.66	29.00	0.033	-29.63	52.50	0.032	-29.90	76.00	0.002	-53.98
-3.75	0.125	-18.06	8.00	0.115	-18.79	29.50	0.041	-27.74	53.00	0.035	-29.12	76.50	0.006	-44.44
-3.50	0.088	-21.11	8.25	0.129	-17.79	30.00	0.037	-28.64	53.50	0.033	-29.63	77.00	0.011	-39.17
-3.25	0.059	-24.58	8.50	0.137	-17.27	30.50	0.026	-31.70	54.00	0.026	-31.70	77.50	0.016	-35.92
-3.00	0.086	-21.31	8.75	0.137	-17.27	31.00	0.020	-33.98	54.50	0.016	-35.92	78.00	0.021	-33.56
-2.75	0.147	-16.65	9.00	0.127	-17.92	31.50	0.030	-30.46	55.00	0.012	-38.42	78.50	0.024	-32.40
-2.50	0.209	-13.60	9.25	0.110	-19.17	32.00	0.038	-28.40	55.50	0.019	-34.42	79.00	0.027	-31.37
-2.25	0.259	-11.73	9.50	0.091	-20.82	32.50	0.036	-28.87	56.00	0.028	-31.06	79.50	0.029	-30.75
-2.00	0.287	-10.84	9.75	0.078	-22.16	33.00	0.026	-31.70	56.50	0.034	-29.37	80.00	0.031	-30.17
-1.75	0.288	-10.81	10.00	0.078	-22.16	33.50	0.018	-34.89	57.00	0.035	-29.12	80.50	0.031	-30.17
-1.50	0.256	-11.84	10.50	0.099	-20.09	34.00	0.027	-31.37	57.50	0.031	-30.17	81.00	0.032	-29.90
-1.25	0.193	-14.29	11.00	0.106	-19.49	34.50	0.036	-28.87	58.00	0.024	-32.40	81.50	0.031	-30.17
-1.00	0.110	-19.17	11.50	0.085	-21.41	35.00	0.036	-28.87	58.50	0.014	-37.08	82.00	0.030	-30.46
-0.75	0.101	-19.91	12.00	0.060	-24.44	35.50	0.028	-31.06	59.00	0.010	-40.00	82.50	0.029	-30.75
-0.50	0.225	-12.96	12.50	0.070	-23.10	36.00	0.018	-34.89	59.50	0.017	-35.39	83.00	0.027	-31.37
-0.25	0.381	-8.38	13.00	0.087	-21.21	36.50	0.022	-33.15	60.00	0.026	-31.70	83.50	0.026	-31.70
0.00	0.541	-5.34	13.50	0.081	-21.83	37.00	0.032	-29.90	60.50	0.032	-29.90	84.00	0.024	-32.40
0.25	0.692	-3.20	14.00	0.057	-24.88	37.50	0.036	-28.87	61.00	0.035	-29.12	84.50	0.022	-33.15
0.50	0.821	-1.71	14.50	0.049	-26.20	38.00	0.031	-30.17	61.50	0.034	-29.37	85.00	0.019	-34.42
0.75	0.920	-0.72	15.00	0.066	-23.61	38.50	0.021	-33.56	62.00	0.029	-30.75	85.50	0.017	-35.39
1.00	0.980	-0.18	15.50	0.072	-22.85	39.00	0.017	-35.39	62.50	0.021	-33.56	86.00	0.015	-36.48
1.25	1.000	0.00	16.00	0.058	-24.73	39.50	0.026	-31.70	63.00	0.012	-38.42	86.50	0.013	-37.72
1.50	0.978	-0.19	16.50	0.040	-27.96	40.00	0.033	-29.63	63.50	0.007	-43.10	87.00	0.011	-39.17
1.75	0.919	-0.73	17.00	0.048	-26.38	40.50	0.034	-29.37	64.00	0.014	-37.08	87.50	0.009	-40.92
2.00	0.829	-1.63	17.50	0.061	-24.29	41.00	0.026	-31.70	64.50	0.023	-32.77	88.00	0.007	-43.10
2.25	0.719	-2.87	18.00	0.059	-24.58	41.50	0.016	-35.92	65.00	0.030	-30.46	88.50	0.005	-46.02
2.50	0.603	-4.39	18.50	0.042	-27.54	42.00	0.017	-35.39	65.50	0.034	-29.37	89.00	0.004	-47.96
2.75	0.495	-6.11	19.00	0.034	-29.37	42.50	0.027	-31.37	66.00	0.036	-28.87	89.50	0.002	-53.98
3.00	0.412	-7.70	19.50	0.047	-26.56	43.00	0.034	-29.37	66.50	0.034	-29.37	90.00	0.000	---
3.25	0.365	-8.75	20.00	0.055	-25.19	43.50	0.033	-29.63	67.00	0.030	-30.46			
3.50	0.349	-9.14	20.50	0.046	-26.74	44.00	0.025	-32.04	67.50	0.023	-32.77			
3.75	0.348	-9.17	21.00	0.031	-30.17	44.50	0.016	-35.92	68.00	0.015	-36.48			
4.00	0.344	-9.27	21.50	0.033	-29.63	45.00	0.017	-35.39	68.50	0.007	-43.10			
4.25	0.327	-9.71	22.00	0.046	-26.74	45.50	0.027	-31.37	69.00	0.005	-46.02			
4.50	0.295	-10.60	22.50	0.049	-26.20	46.00	0.034	-29.37	69.50	0.013	-37.72			
4.75	0.253	-11.94	23.00	0.037	-28.64	46.50	0.034	-29.37	70.00	0.021	-33.56			
5.00	0.208	-13.64	23.50	0.026	-31.70	47.00	0.028	-31.06	70.50	0.027	-31.37			
5.25	0.174	-15.19	24.00	0.034	-29.37	47.50	0.018	-34.89	71.00	0.032	-29.90			
5.50	0.162	-15.81	24.50	0.045	-26.94	48.00	0.014	-37.08	71.50	0.035	-29.12			
5.75	0.170	-15.39	25.00	0.043	-27.33	48.50	0.023	-32.77	72.00	0.037	-28.64			
6.00	0.185	-14.66	25.50	0.031	-30.17	49.00	0.031	-30.17	72.50	0.036	-28.87			
6.25	0.194	-14.24	26.00	0.023	-32.77	49.50	0.035	-29.12	73.00	0.034	-29.37			
6.50	0.191	-14.38	26.50	0.034	-29.37	50.00	0.032	-29.90	73.50	0.030	-30.46			

ENGINEERING STATEMENT

The engineering data contained herein have been prepared on behalf of COMMUNITY EDUCATIONAL TELEVISION, INC. ("CET"), licensee of Television Station KITU-DT, Channel 33 in Beaumont, Texas, in support of its Application for License. This statement provides data on the environmental levels of RF energy in the vicinity of the transmitter site.

KITU-DT operates with a main-lobe ERP of 500 kw and a center of radiation 313 meters above ground. Employing the methods set forth in *OET Bulletin No. 65* and considering the vertical pattern of the licensed ERI ATW25H3-HTC1U antenna, we calculate that maximum power density two meters above ground of 0.00021 mw/cm<sup>2</sup> would exist 96 meters south of the base of the tower. This is less than 0.1 percent of the 0.39 mw/cm<sup>2</sup> reference for uncontrolled environments, *i.e.*, areas with public access, surrounding stations operating on Channel 33 (584-590 MHz). Therefore, this facility may be excluded from consideration with respect to public and occupational exposure to ground-level nonionizing electromagnetic radiation.

CET modifies the operation of KITU-DT so that if personnel must climb the tower for repair or maintenance, appropriate steps are taken, such as reducing power or temporarily leaving the air, to assure an absence of excessive RF exposure in controlled areas. On this basis, and considering that the station produces significantly less than five percent of the current FCC reference in uncontrolled areas, a grant of the subject application would clearly constitute a minor environmental action in this respect.

October 13, 2006

  
KEVIN T. FISHER