

Exhibit 13

Radio Training Network Inc.

P O Box 7217
Lakeland, FL 33807-7217

Channel Spacing Report for Channel 271

ComStudy 2.2 search of channel 271 (102.1 MHz Class D)
at 32-30-44.5 N, 85-00-41.2 W., 0.21 Kwatts ERP, 105 m AGL

CALL	CITY	ST	CHN	CL	DIST	SEP	BRNG	CLEARANCE
W269CT	COLUMBUS	GA	269	D	0.00	0.00	90.0	-60.34 dB*
WELR-FM	ROANOKE	AL	272	C3	66.42	0.00	332.8	3.31 dB
WHHY-FM	MONTGOMERY	AL	270	C0	112.06	0.00	264.1	9.79 dB
W271BC	LUMPKIN	GA	271	D	52.96	0.00	155.6	12.65 dB
WWWD	BOLINGBROKE	GA	271	A	123.80	0.00	68.8	16.30 dB
WGAF-LP	FAYETTEVILLE	GA	271	LP100	106.87	24.00	23.5	18.27 dB
900530ME	BOLINGBROKE	GA	271	A	112.99	0.00	65.8	20.26 dB
WELR-FM	ROANOKE	AL	272	C3	66.99	0.00	324.1	21.72 dB
W271CE	OXFORD	AL	271	D	148.40	0.00	326.8	22.77 dB
WEBT	LANGDALE	AL	218	A	35.96	10.00	334.3	26.0
NEW	DOUGLASVILLE	GA	271	LP100	147.67	24.00	13.1	26.03 dB
WHJU-LP	CONYERS	GA	271	LP100	150.54	24.00	37.3	26.52 dB
WKHX-FM	MARIETTA	GA	268	C0	156.69	0.00	23.3	27.24 dB

*See Waiver request below showing protection of W269CT.

WAIVER REQUEST, SECTION 74.1204

The proposed FM translator is located within the protected 60dbu contour of construction permit for W269CT on second adjacent channel 269, Columbus Ga.

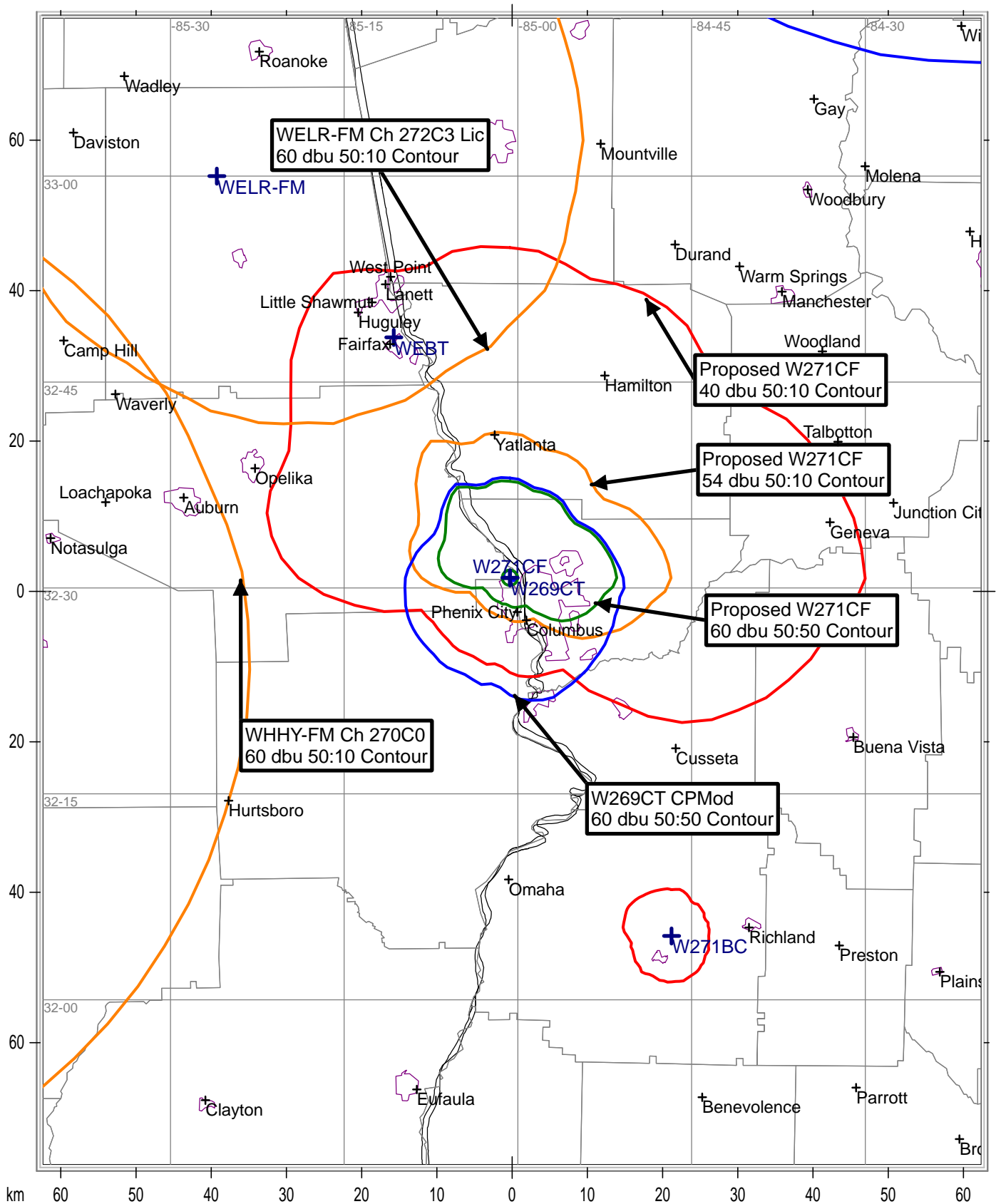
The Proposed W271CF site is co-located at the same site as W269CT CP. W269CT will operate at greater height and ERP than W271CF, therefore the proposed W271CF signal will never be 40 db greater than W269CT.

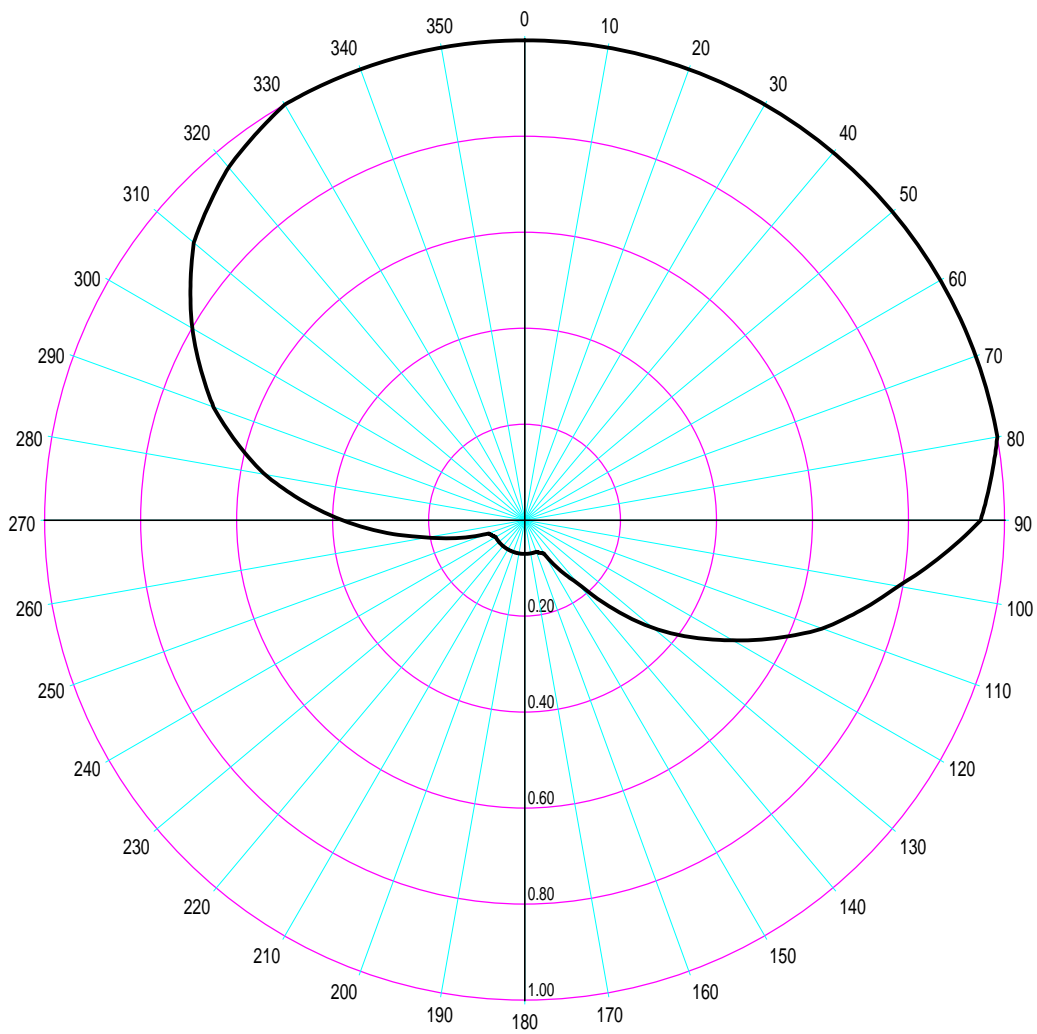
The area surrounding the proposed translator site is single family residential. See the attached aerial photo and Topo map included to show the nature of the buildings in the area. Because both W271CF and W269CT antennas are over 100 meters above ground level, there are no likely receiver locations that will receive interference.

Therefore, Radio Training Network Inc. Respectfully requests a waiver of C.F.R 74.1204 based on no population within the area of predicted interference.

Should any actual interference occur, Radio Training Network, Inc will promptly suspend operation or reduce power of this translator in accordance with 47 C.F.R. 74.1203.

W271CF Countours



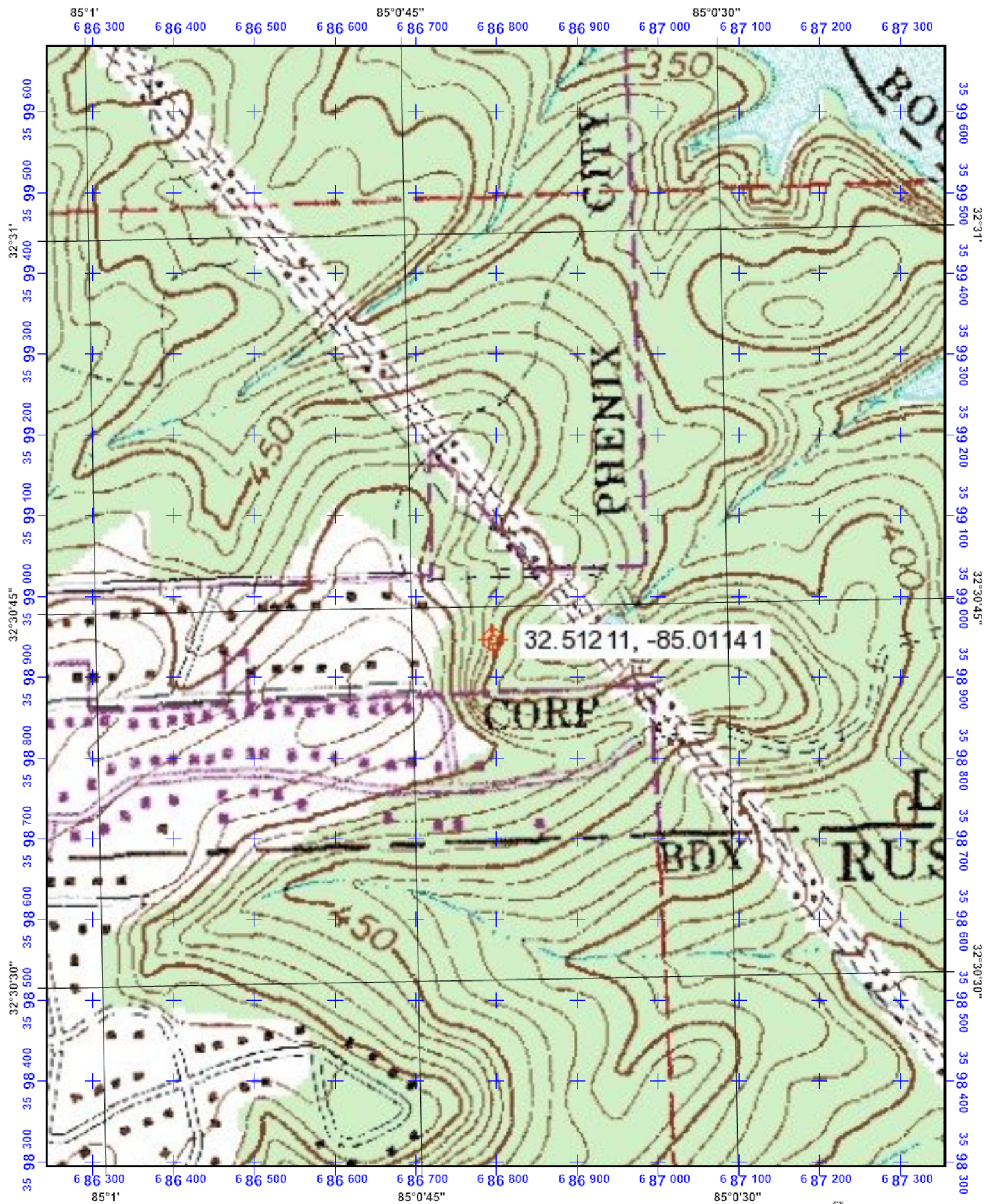


Azim	Rel.FS	ERP [W]	dBk
0.0	1.000	210.000	-6.778
5.0	1.000	210.000	-6.778
10.0	1.000	210.000	-6.778
15.0	1.000	210.000	-6.778
20.0	1.000	210.000	-6.778
25.0	1.000	210.000	-6.778
30.0	1.000	210.000	-6.778
35.0	1.000	210.000	-6.778
40.0	1.000	210.000	-6.778
45.0	1.000	210.000	-6.778
50.0	1.000	210.000	-6.778
55.0	1.000	210.000	-6.778
60.0	1.000	210.000	-6.778
65.0	1.000	210.000	-6.778
70.0	1.000	210.000	-6.778
75.0	1.000	210.000	-6.778
80.0	1.000	210.000	-6.778
85.0	0.975	199.631	-6.998

Azim	Rel.FS	ERP [W]	dBk
90.0	0.950	189.525	-7.223
95.0	0.870	158.949	-7.987
100.0	0.790	131.061	-8.825
105.0	0.725	110.381	-9.571
110.0	0.660	91.476	-10.387
115.0	0.580	70.644	-11.509
120.0	0.500	52.500	-12.798
125.0	0.425	37.931	-14.210
130.0	0.350	25.725	-15.896
135.0	0.260	14.196	-18.478
140.0	0.170	6.069	-22.169
145.0	0.125	3.281	-24.840
150.0	0.080	1.344	-28.716
155.0	0.075	1.181	-29.277
160.0	0.070	1.029	-29.876
165.0	0.070	1.029	-29.876
170.0	0.070	1.029	-29.876
175.0	0.070	1.029	-29.876

Azim	Rel.FS	ERP [W]	dBk
180.0	0.070	1.029	-29.876
185.0	0.070	1.029	-29.876
190.0	0.070	1.029	-29.876
195.0	0.070	1.029	-29.876
200.0	0.070	1.029	-29.876
205.0	0.070	1.029	-29.876
210.0	0.070	1.029	-29.876
215.0	0.070	1.029	-29.876
220.0	0.070	1.029	-29.876
225.0	0.070	1.029	-29.876
230.0	0.070	1.029	-29.876
235.0	0.070	1.029	-29.876
240.0	0.070	1.029	-29.876
245.0	0.075	1.181	-29.277
250.0	0.080	1.344	-28.716
255.0	0.142	4.234	-23.732
260.0	0.205	8.825	-20.543
265.0	0.292	17.905	-17.470

Azim	Rel.FS	ERP [W]	dBk
270.0	0.380	30.324	-15.182
275.0	0.465	45.407	-13.429
280.0	0.550	63.525	-11.971
285.0	0.620	80.724	-10.930
290.0	0.690	99.981	-10.001
295.0	0.745	116.555	-9.335
300.0	0.800	134.400	-8.716
305.0	0.850	151.725	-8.189
310.0	0.900	170.100	-7.693
315.0	0.930	181.629	-7.408
320.0	0.960	193.536	-7.132
325.0	0.980	201.684	-6.953
330.0	1.000	210.000	-6.778
335.0	1.000	210.000	-6.778
340.0	1.000	210.000	-6.778
345.0	1.000	210.000	-6.778
350.0	1.000	210.000	-6.778
355.0	1.000	210.000	-6.778



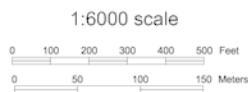
Universal Transverse Mercator (UTM) Projection Zone 16
 North American Datum of 1983
 100 meter UTM / USNG / MGRS
 Grid Zone Designation: 16S
 100,000-m Squares:FA

1:6000 scale
 0 100 200 300 400 500 Feet
 0 50 100 150 Meters

Magnetic declination of 2W at center of map
 on March 17, 2011



Universal Transverse Mercator (UTM) Projection Zone 16
North American Datum of 1983
100 meter UTM / USNG / MGRS
Grid Zone Designation: 16S
100,000-m Squares:FA



GN
↑
TN
1°
MN
2°
Magnetic declination of 2W at center of map
on March 17, 2011