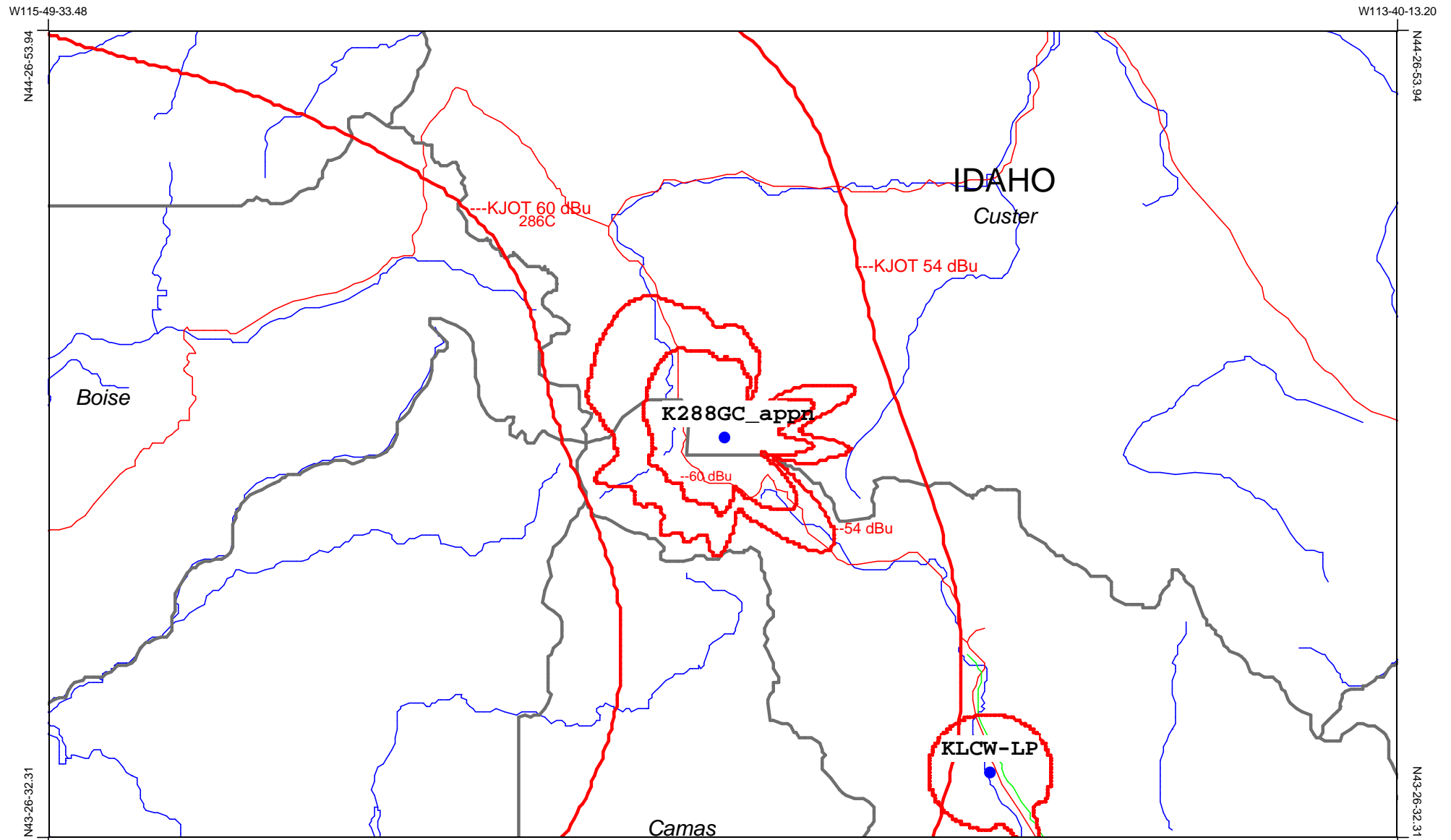
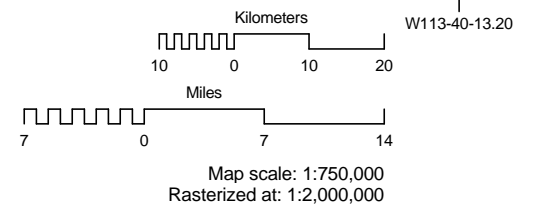


No Interference Caused to First Adjacent Channel Stations



Application for K288GC to move to Channel 287
No interference will be caused, applicant will accept
theoretical interference from KJOT.



Distance to FM Contour

Study: K288GC app-3
Site: K288GC-3

Latitude: N43-56-25.00
Longitude: W114-44-29.00
~NAD83 coordinates

True Radial Bearing (Degrees)	Average Elevation (meters)	Radiation Center Height Above Average Terrain (meters)	Effective Radiated Power (KW)	(dBKW)	Distance to Contour 60.0 dBu F(50,50) (km)
0.00	2578.40	335.60	0.0110443	-19.57	10.96
5.00	2585.42	328.58	0.011418	-19.42	10.94
10.00	2614.42	299.58	0.0117489	-19.30	10.55
15.00	2676.77	237.23	0.0120243	-19.20	9.44
20.00	2711.48	202.52	0.0122628	-19.11	8.74
25.00	2787.95	126.05	0.01245	-19.05	6.89
30.00	2838.22	75.78	0.012603	-19.00	5.36
35.00	2879.59	34.41	0.0127261	-18.95	3.57
40.00	2932.08	0.00	0.0128292	-18.92	3.35
45.00	2888.84	25.16	0.0129015	-18.89	3.36
50.00	2808.45	105.55	0.0129533	-18.88	6.41
55.00	2715.67	198.33	0.0129818	-18.87	8.78
60.00	2648.35	265.65	0.0129948	-18.86	10.19
65.00	2549.23	364.77	0.0129922	-18.86	11.89
70.00	2546.03	367.97	0.0129792	-18.87	11.94
75.00	2666.43	247.57	0.0129429	-18.88	9.82
80.00	2767.58	146.42	0.0128911	-18.90	7.46
85.00	2793.88	120.12	0.0128085	-18.93	6.79
90.00	2735.03	178.97	0.0127054	-18.96	8.28
95.00	2588.64	325.36	0.0125724	-19.01	11.16
100.00	2622.52	291.48	0.0124194	-19.06	10.56
105.00	2696.58	217.42	0.0122151	-19.13	9.06
110.00	2764.54	149.46	0.0119766	-19.22	7.40
115.00	2844.25	69.75	0.0116827	-19.32	5.05

True Radial Bearing (Degrees)	Average Elevation (meters)	Radiation Center Height Above Average Terrain (meters)	Effective Radiated Power (KW)	(dBKW)	Distance to Contour 60.0 dBu F(50,50) (km)
120.00	2805.81	108.19	0.0113519	-19.45	6.28
125.00	2694.54	219.46	0.0109567	-19.60	8.85
130.00	2522.61	391.39	0.0105188	-19.78	11.61
135.00	2386.26	527.74	0.0100252	-19.99	12.83
140.00	2342.48	571.52	0.00949463	-20.23	13.13
145.00	2388.80	525.20	0.00894399	-20.48	12.39
150.00	2490.25	423.75	0.00837998	-20.77	11.30
155.00	2552.34	361.66	0.00781496	-21.07	10.38
160.00	2633.26	280.74	0.00724927	-21.40	9.00
165.00	2662.53	251.47	0.00671415	-21.73	8.32
170.00	2726.39	187.61	0.00619941	-22.08	7.01
175.00	2610.41	303.59	0.00574337	-22.41	8.77
180.00	2443.31	470.69	0.00532646	-22.74	10.30
185.00	2354.71	559.29	0.00497858	-23.03	10.61
190.00	2477.51	436.49	0.00467672	-23.30	9.66
195.00	2442.79	471.21	0.00443859	-23.53	9.73
200.00	2381.59	532.41	0.00424294	-23.72	9.89
205.00	2406.24	507.76	0.00409074	-23.88	9.65
210.00	2324.94	589.06	0.0039675	-24.01	10.03
215.00	2413.06	500.94	0.00387998	-24.11	9.45
220.00	2503.34	410.66	0.00381628	-24.18	8.83
225.00	2479.32	434.68	0.00376986	-24.24	9.00
230.00	2372.17	541.83	0.00373495	-24.28	9.53
235.00	2385.37	528.63	0.00371682	-24.30	9.45
240.00	2408.33	505.67	0.00370986	-24.31	9.34
245.00	2307.77	606.23	0.00371125	-24.30	9.90
250.00	2194.09	719.91	0.00371821	-24.30	10.43
255.00	2297.98	616.02	0.00374193	-24.27	9.98
260.00	2407.27	506.73	0.00377684	-24.23	9.40
265.00	2406.10	507.90	0.00382902	-24.17	9.44

True Radial Bearing (Degrees)	Average Elevation (meters)	Radiation Center Height Above Average Terrain (meters)	Effective Radiated Power (KW)	(dBKW)	Distance to Contour 60.0 dBu F(50,50) (km)
270.00	2407.29	506.71	0.00389272	-24.10	9.49
275.00	2352.65	561.35	0.00399214	-23.99	9.87
280.00	2312.59	601.41	0.00411538	-23.86	10.24
285.00	2228.74	685.26	0.00428207	-23.68	10.84
290.00	2189.60	724.40	0.00447772	-23.49	11.22
295.00	2192.46	721.54	0.0047371	-23.24	11.44
300.00	2187.43	726.57	0.00503896	-22.98	11.74
305.00	2172.02	741.98	0.00540985	-22.67	12.14
310.00	2163.56	750.44	0.00582676	-22.35	12.52
315.00	2165.14	748.86	0.00630236	-22.00	12.89
320.00	2161.72	752.28	0.0068171	-21.66	13.29
325.00	2166.80	747.20	0.00736241	-21.33	13.63
330.00	2204.36	709.64	0.0079281	-21.01	13.72
335.00	2263.33	650.67	0.00849278	-20.71	13.52
340.00	2358.50	555.50	0.00905679	-20.43	12.75
345.00	2431.34	482.66	0.00960075	-20.18	12.30
350.00	2479.31	434.69	0.0101313	-19.94	12.02
355.00	2574.79	339.21	0.0106064	-19.74	10.91

Radiation Center (AGL): 55.0 meters 180.4 feet
Radiation Center (AMSL): 2914.0 meters 9560.3 feet
Radiation Center (HAAT): 413.0 meters 1354.9 feet
Average Terrain (AMSL): 2501.0 meters 8205.4 feet
Ground AMSL: 2859.0 meters 9379.9 feet

Peak ERP: 0.0 KW
Frequency: 105.3 MHz
Antenna:
Orientation: 62.00° Downtilt: 0°

Area within 60.0 dBu F(50,50) Contour is 320.071 km

Distance to FM Contour

Study: K288GCapp-3_54
Site: K288GC-3

Latitude: N43-56-25.00
Longitude: W114-44-29.00

True Radial Bearing (Degrees)	Average Elevation (meters)	Radiation Center Height Above Average Terrain (meters)	Effective Radiated Power (KW)	(dBKW)	Distance to Contour 54.0 dBu F(50,10) (km)
0.00	2578.40	335.60	0.0110443	-19.57	15.52
5.00	2585.42	328.58	0.011418	-19.42	15.48
10.00	2614.42	299.58	0.0117489	-19.30	14.77
15.00	2676.77	237.23	0.0120243	-19.20	13.19
20.00	2711.48	202.52	0.0122628	-19.11	12.29
25.00	2787.95	126.05	0.01245	-19.05	9.70
30.00	2838.22	75.78	0.012603	-19.00	7.48
35.00	2879.59	34.41	0.0127261	-18.95	5.06
40.00	2932.08	0.00	0.0128292	-18.92	4.74
45.00	2888.84	25.16	0.0129015	-18.89	4.74
50.00	2808.45	105.55	0.0129533	-18.88	9.00
55.00	2715.67	198.33	0.0129818	-18.87	12.34
60.00	2648.35	265.65	0.0129948	-18.86	14.21
65.00	2549.23	364.77	0.0129922	-18.86	17.24
70.00	2546.03	367.97	0.0129792	-18.87	17.33
75.00	2666.43	247.57	0.0129429	-18.88	13.70
80.00	2767.58	146.42	0.0128911	-18.90	10.56
85.00	2793.88	120.12	0.0128085	-18.93	9.55
90.00	2735.03	178.97	0.0127054	-18.96	11.71
95.00	2588.64	325.36	0.0125724	-19.01	15.88
100.00	2622.52	291.48	0.0124194	-19.06	14.76
105.00	2696.58	217.42	0.0122151	-19.13	12.70
110.00	2764.54	149.46	0.0119766	-19.22	10.49
115.00	2844.25	69.75	0.0116827	-19.32	7.05

True Radial Bearing (Degrees)	Average Elevation (meters)	Radiation Center Height Above Average Terrain (meters)	Effective Radiated Power (KW)	(dBKW)	Distance to Contour 54.0 dBu F(50,10) (km)
120.00	2805.81	108.19	0.0113519	-19.45	8.81
125.00	2694.54	219.46	0.0109567	-19.60	12.43
130.00	2522.61	391.39	0.0105188	-19.78	16.91
135.00	2386.26	527.74	0.0100252	-19.99	19.81
140.00	2342.48	571.52	0.00949463	-20.23	20.47
145.00	2388.80	525.20	0.00894399	-20.48	19.12
150.00	2490.25	423.75	0.00837998	-20.77	16.65
155.00	2552.34	361.66	0.00781496	-21.07	14.67
160.00	2633.26	280.74	0.00724927	-21.40	12.72
165.00	2662.53	251.47	0.00671415	-21.73	11.81
170.00	2726.39	187.61	0.00619941	-22.08	10.06
175.00	2610.41	303.59	0.00574337	-22.41	12.50
180.00	2443.31	470.69	0.00532646	-22.74	15.34
185.00	2354.71	559.29	0.00497858	-23.03	16.57
190.00	2477.51	436.49	0.00467672	-23.30	14.08
195.00	2442.79	471.21	0.00443859	-23.53	14.35
200.00	2381.59	532.41	0.00424294	-23.72	15.18
205.00	2406.24	507.76	0.00409074	-23.88	14.49
210.00	2324.94	589.06	0.0039675	-24.01	15.93
215.00	2413.06	500.94	0.00387998	-24.11	14.20
220.00	2503.34	410.66	0.00381628	-24.18	13.01
225.00	2479.32	434.68	0.00376986	-24.24	13.31
230.00	2372.17	541.83	0.00373495	-24.28	14.59
235.00	2385.37	528.63	0.00371682	-24.30	14.37
240.00	2408.33	505.67	0.00370986	-24.31	14.07
245.00	2307.77	606.23	0.00371125	-24.30	15.90
250.00	2194.09	719.91	0.00371821	-24.30	17.72
255.00	2297.98	616.02	0.00374193	-24.27	16.12
260.00	2407.27	506.73	0.00377684	-24.23	14.16
265.00	2406.10	507.90	0.00382902	-24.17	14.23

True Radial Bearing (Degrees)	Average Elevation (meters)	Radiation Center Height Above Average Terrain (meters)	Effective Radiated Power (KW)	Distance to Contour 54.0 dBu F(50,10) (km)
			(dBKW)	
270.00	2407.29	506.71	0.00389272	-24.10
275.00	2352.65	561.35	0.00399214	-23.99
280.00	2312.59	601.41	0.00411538	-23.86
285.00	2228.74	685.26	0.00428207	-23.68
290.00	2189.60	724.40	0.00447772	-23.49
295.00	2192.46	721.54	0.0047371	-23.24
300.00	2187.43	726.57	0.00503896	-22.98
305.00	2172.02	741.98	0.00540985	-22.67
310.00	2163.56	750.44	0.00582676	-22.35
315.00	2165.14	748.86	0.00630236	-22.00
320.00	2161.72	752.28	0.0068171	-21.66
325.00	2166.80	747.20	0.00736241	-21.33
330.00	2204.36	709.64	0.0079281	-21.01
335.00	2263.33	650.67	0.00849278	-20.71
340.00	2358.50	555.50	0.00905679	-20.43
345.00	2431.34	482.66	0.00960075	-20.18
350.00	2479.31	434.69	0.0101313	-19.94
355.00	2574.79	339.21	0.0106064	-19.74

Radiation Center (AGL): 55.0 meters 180.4 feet
Radiation Center (AMSL): 2914.0 meters 9560.3 feet
Radiation Center (HAAT): 413.0 meters 1354.9 feet
Average Terrain (AMSL): 2501.0 meters 8205.4 feet
Ground AMSL: 2859.0 meters 9379.9 feet

Peak ERP: 0.0 KW

Frequency: 105.3 MHz

Antenna:

Orientation: 62.00° Downtilt: 0°

Area within 54.0 dBu F(50,10) Contour is 742.741 km

Distance to FM Contour

Study: KJOT3
Site: KJOT3

Latitude: N43-45-18.00
Longitude: W116-05-55.00

True Radial Bearing (Degrees)	Average Elevation (meters)	Radiation Center Height Above Average Terrain (meters)	Effective Radiated Power (KW)	Distance to Contour 60.0 dBu F(50,50) (dBKW)	Distance to Contour 60.0 dBu F(50,50) (km)
0.00	1584.79	603.21	53.00	17.24	85.53
15.00	1699.26	488.74	53.00	17.24	79.61
30.00	1667.81	520.19	53.00	17.24	81.51
45.00	1538.13	649.87	53.00	17.24	87.24
60.00	1385.24	802.76	53.00	17.24	92.55
75.00	1457.92	730.08	53.00	17.24	90.08
90.00	1305.70	882.30	53.00	17.24	95.02
105.00	1262.87	925.13	53.00	17.24	96.17
120.00	1370.05	817.95	53.00	17.24	93.05
135.00	1378.45	809.55	53.00	17.24	92.78
150.00	1393.79	794.21	53.00	17.24	92.27
165.00	1606.61	581.39	53.00	17.24	84.65
180.00	1567.04	620.96	53.00	17.24	86.19
195.00	1334.07	853.93	53.00	17.24	94.18
210.00	1184.45	1003.55	53.00	17.24	98.10
225.00	1147.64	1040.36	53.00	17.24	98.96
240.00	1187.67	1000.33	53.00	17.24	98.02
255.00	1216.56	971.44	53.00	17.24	97.33
270.00	1257.82	930.18	53.00	17.24	96.30
285.00	1291.78	896.22	53.00	17.24	95.41
300.00	1414.68	773.32	53.00	17.24	91.57
315.00	1308.23	879.77	53.00	17.24	94.95
330.00	1285.87	902.13	53.00	17.24	95.57
345.00	1447.63	740.37	53.00	17.24	90.44

True Radial Bearing (Degrees)	Average Elevation (meters)	Radiation Center Height Above Average Terrain (meters)	Effective Radiated Power (KW)	(dBKW)	Distance to Contour 60.0 dBu F(50,50) (km)
--	----------------------------------	---	--	--------	---

Radiation Center (AGL):	54.0 meters	177.2 feet
Radiation Center (AMSL):	2188.0 meters	7178.5 feet
Radiation Center (HAAT):	800.7 meters	2627.1 feet
Average Terrain (AMSL):	1387.3 meters	4551.3 feet
Ground AMSL:	2134.0 meters	7001.3 feet

Peak ERP: 53.0 KW
Frequency: 105.1 MHz
Antenna:
Orientation: 0.00°
Downtilt: 0.00°

Area within 60.0 dBu F(50,50) Contour is 26659.2 km

Distance to FM Contour

Study: KJOT3-56
Site: KJOT3

Latitude: N43-45-18.00
Longitude: W116-05-55.00

True Radial Bearing (Degrees)	Average Elevation (meters)	Radiation Center Height Above Average Terrain (meters)	Effective Radiated Power (KW)	Distance to Contour 54.0 dBu F(50,10) (km)
			(dBKW)	
0.00	1584.79	603.21	53.00	126.40
15.00	1699.26	488.74	53.00	117.43
30.00	1667.81	520.19	53.00	120.75
45.00	1538.13	649.87	53.00	128.65
60.00	1385.24	802.76	53.00	135.80
75.00	1457.92	730.08	53.00	132.54
90.00	1305.70	882.30	53.00	138.83
105.00	1262.87	925.13	53.00	140.21
120.00	1370.05	817.95	53.00	136.43
135.00	1378.45	809.55	53.00	136.08
150.00	1393.79	794.21	53.00	135.44
165.00	1606.61	581.39	53.00	125.32
180.00	1567.04	620.96	53.00	127.25
195.00	1334.07	853.93	53.00	137.82
210.00	1184.45	1003.55	53.00	142.61
225.00	1147.64	1040.36	53.00	143.72
240.00	1187.67	1000.33	53.00	142.51
255.00	1216.56	971.44	53.00	141.63
270.00	1257.82	930.18	53.00	140.36
285.00	1291.78	896.22	53.00	139.30
300.00	1414.68	773.32	53.00	134.53
315.00	1308.23	879.77	53.00	138.74
330.00	1285.87	902.13	53.00	139.49
345.00	1447.63	740.37	53.00	133.02

True Radial Bearing (Degrees)	Average Elevation (meters)	Radiation Center Height Above Average Terrain (meters)	Effective Radiated Power (KW)	(dBKW)	Distance to Contour 54.0 dBu F(50,10) (km)
--	----------------------------------	---	--	--------	---

Radiation Center (AGL):	54.0 meters	177.2 feet
Radiation Center (AMSL):	2188.0 meters	7178.5 feet
Radiation Center (HAAT):	800.7 meters	2627.1 feet
Average Terrain (AMSL):	1387.3 meters	4551.3 feet
Ground AMSL:	2134.0 meters	7001.3 feet

Peak ERP: 53.0 KW
Frequency: 105.1 MHz
Antenna:
Orientation: 0.00°
Downtilt: 0.00°

Area within 54.0 dBu F(50,10) Contour is 57215.8 km

Distance to FM Contour

Study: KLCW-LP_54
Site: KLCW-LP

Latitude: N43-31-20.70
Longitude: W114-19-06.20

True Radial Bearing (Degrees)	Average Elevation (meters)	Radiation Center Height Above Average Terrain (meters)	Effective Radiated Power (KW)	(dBKW)	Distance to Contour 54.0 dBu F(50,10) (km)
0.00	1921.56	0.00	0.1	-10.00	7.99
15.00	1966.62	0.00	0.1	-10.00	7.99
30.00	2114.93	0.00	0.1	-10.00	7.99
45.00	2129.15	0.00	0.1	-10.00	7.99
60.00	2044.55	0.00	0.1	-10.00	7.99
75.00	2048.48	0.00	0.1	-10.00	7.99
90.00	2096.22	0.00	0.1	-10.00	7.99
105.00	2069.14	0.00	0.1	-10.00	7.99
120.00	1886.37	0.00	0.1	-10.00	7.99
135.00	1798.09	0.00	0.1	-10.00	7.99
150.00	1570.41	65.59	0.1	-10.00	11.82
165.00	1639.12	0.00	0.1	-10.00	7.99
180.00	1754.36	0.00	0.1	-10.00	7.99
195.00	1846.57	0.00	0.1	-10.00	7.99
210.00	1703.56	0.00	0.1	-10.00	7.99
225.00	1756.90	0.00	0.1	-10.00	7.99
240.00	1899.66	0.00	0.1	-10.00	7.99
255.00	2089.06	0.00	0.1	-10.00	7.99
270.00	1994.52	0.00	0.1	-10.00	7.99
285.00	1980.72	0.00	0.1	-10.00	7.99
300.00	1994.80	0.00	0.1	-10.00	7.99
315.00	1940.34	0.00	0.1	-10.00	7.99
330.00	2001.03	0.00	0.1	-10.00	7.99
345.00	1757.87	0.00	0.1	-10.00	7.99

True Radial Bearing (Degrees)	Average Elevation (meters)	Radiation Center Height Above Average Terrain (meters)	Effective Radiated Power (KW)	(dBKW)	Distance to Contour 54.0 dBu F(50,10) (km)
--	----------------------------------	---	--	--------	---

Radiation Center (AGL):	-10.0 meters	-32.8 feet
Radiation Center (AMSL):	1636.0 meters	5367.4 feet
Radiation Center (HAAT):	-280.8 meters	-921.4 feet
Average Terrain (AMSL):	1916.8 meters	6288.8 feet
Ground AMSL:	1646.0 meters	5400.3 feet

Peak ERP: 0.1 KW
Frequency: 105.5 MHz
Antenna:
Orientation: 0.00°
Downtilt: 0.00°

Area within 54.0 dBu F(50,10) Contour is 210.137 km