

KOGA

Freq: 930 kHz

Class: B

Latitude: 41-08-32 N

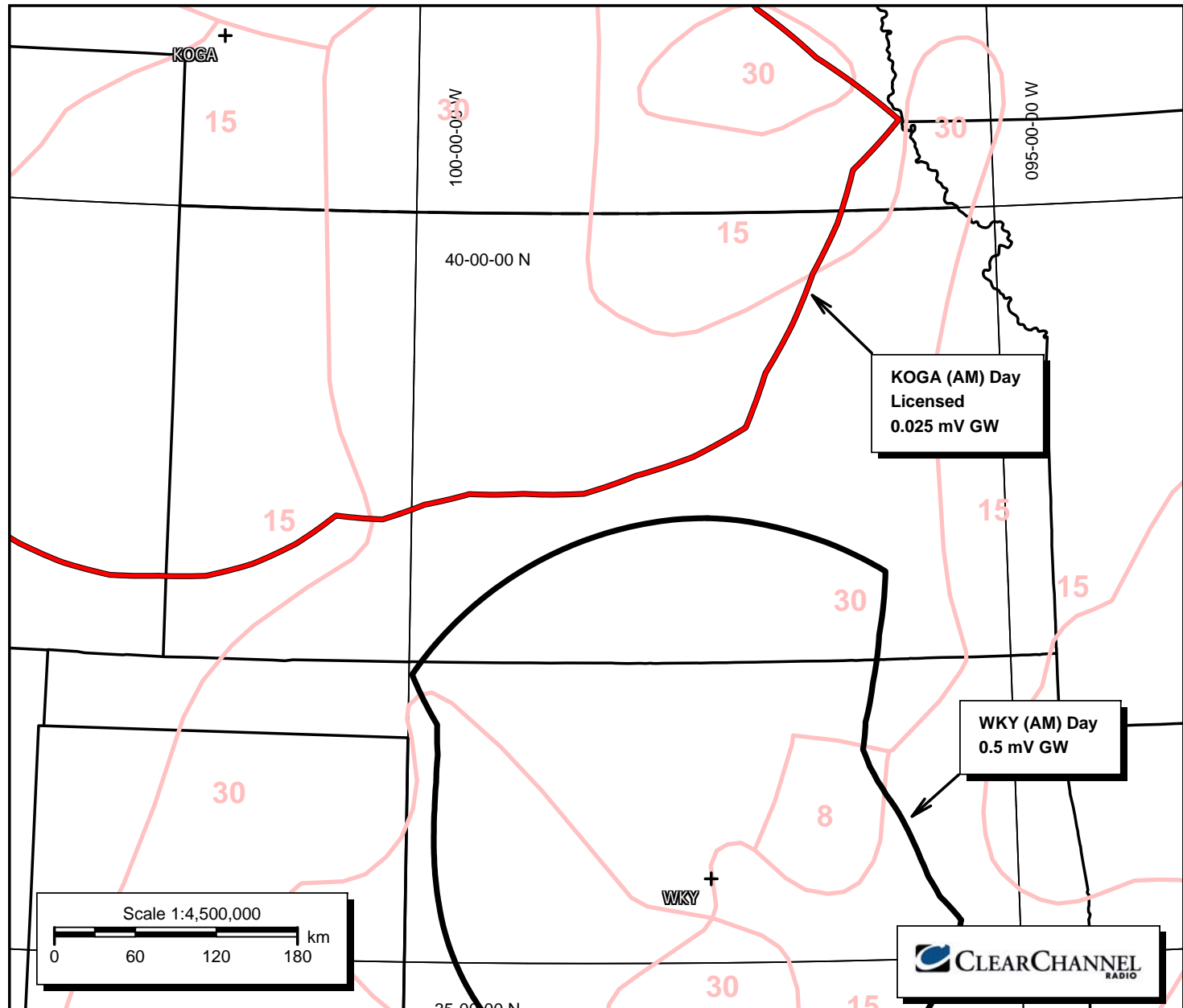
Longitude: 101-42-48 W

Power: 5 kW

RMS: 660.3 mV/m @1km

Towers: 3

Aucs: 0



KOGA (AM) Licensed Day 0.025 mV/m vs. WKY (AM) 0.5 mV/m Overlap Area