

Channel Study

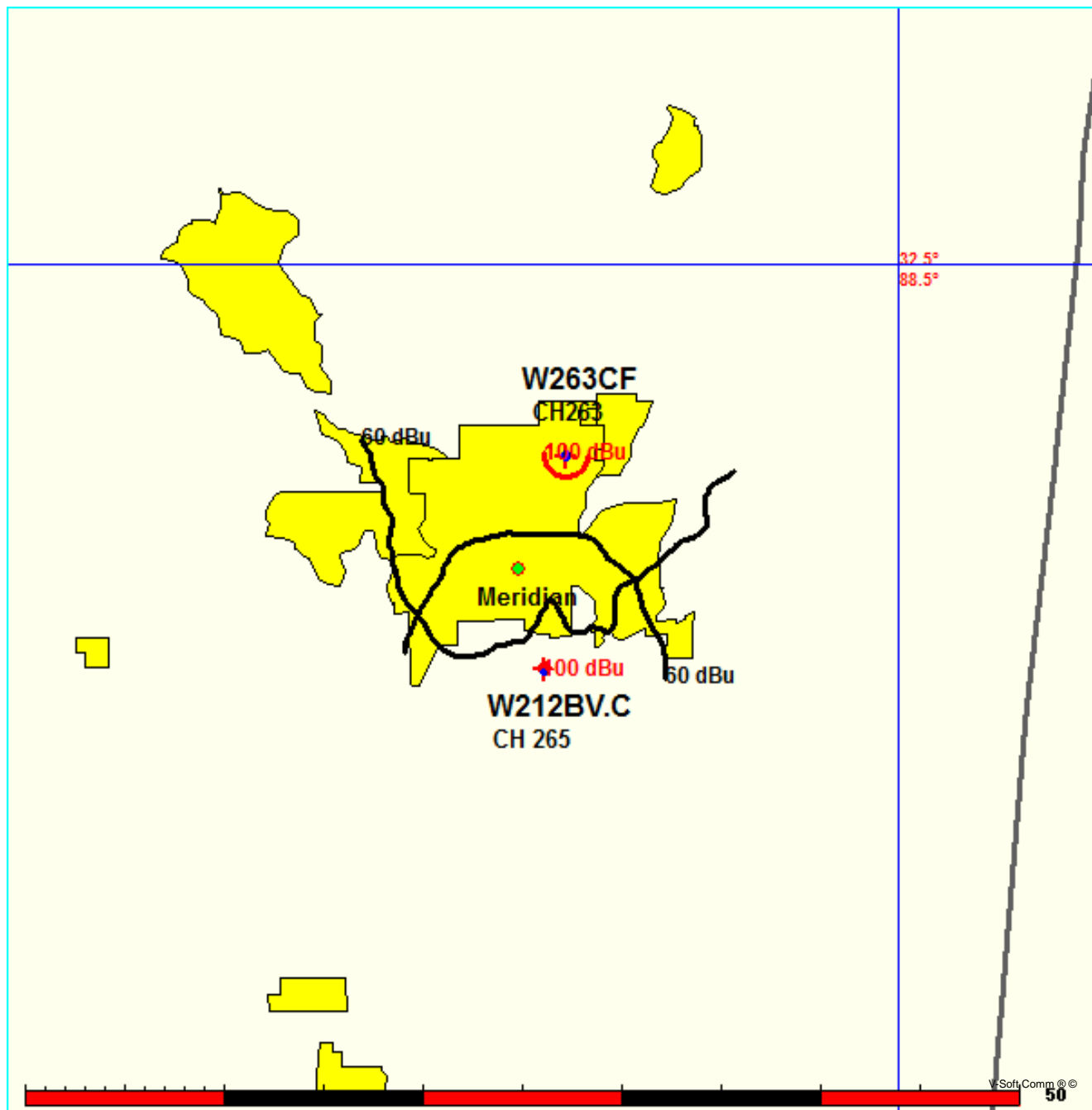
REFERENCE		CH# 265D - 100.9 MHz, Pwr= 0.01 kW, HAAT= 127.1 M, COR= 253 M								DISPLAY DATES	
32 19 10.2 N.		Average Protected F(50-50)= 6.6 km								DATA 05-09-14	
88 41 23.3 W.		Omni-directional								SEARCH 05-19-14	
CH CITY	CALL	TYPE STATE	ANT STATE	AZI. <--	DIST FILE #	LAT. LNG.	Pwr(kW) HAAT(M)	INT(km) COR(M)	PRO(km) LICENSEE	*IN* (Overlap in km)	*OUT*
267C1 Meridian	WJDQ	LIC	CX MS	196.8 16.8	0.87 BMLH20040112ADF	32 18 43.0 88 41 33.0	100.000 176	8.0 301	62.9 Mississippi Broadcasters,	-13.4*<	-62.2*<
265D Meridian	W212BV	CP	C MS	196.8 16.8	0.87 BPFT20130709ABH	32 18 43.0 88 41 33.0	0.010	24.3 265	7.2 Educational Media Foundati	-29.6*	-27.1*
263D Meridian	W263CF	CP	C MS	6.0 186.0	10.70 BNPFT20130312ABA	32 24 55.7 88 40 40.2	0.250 53	1.1 172	7.3 Clear Channel Broadcasting	2.8	3.2
265C2 Mantee	WKBB	LIC	ZCX MS	356.0 175.9	151.11 BLH20110708AAY	33 40 43.0 88 48 18.0	47.000 155	138.2 230	53.4 Telesouth Communications,	6.1	75.2
265C2 Utica	WJXN-FM	LIC	CX MS	259.7 78.8	158.36 BLH20020104AAE	32 03 13.0 90 20 23.0	39.000 168	136.2 265	53.4 Flinn Broadcasting Corpora	15.3	81.7
265C2 Orrville	AL6444	RSV-A	AL	88.6 269.5	166.91 RMrfsl5*	32 20 42.0 86 55 02.0	50.000 150	139.8 203	54.1 21.0	92.6	
264D York	W264CI	LIC	C AL	60.7 240.9	46.50 BLFT20121219ACE	32 31 24.0 88 15 28.0	0.250 107	19.4 163	13.0 Paul Scott Alexander. Jr	21.4	25.5
262C0 Laurel	WNSL	LIC	CX MS	205.6 25.4	97.45 BMLH20060918AHV	31 31 37.0 89 08 07.0	100.000 324	10.5 394	74.3 Cc Licenses, Llc	80.4	22.9
265C2 Orrville	WALX	LIC	CX AL	88.0 268.9	170.96 BLH20090130AAJ	32 21 40.0 86 52 28.0	50.000 150	139.9 202	54.2 Scott Communications, Inc.	24.9	96.6

Terrain database is NGDC 30 SEC, R= 73.215 qualifying spacings or FCC minimum spacings in KM, M= Margin in KM
Contour distances are on direct line to and from reference station. Reference Zone= East Zone, Co to 3rd adjacent.
Ant Column: (D= DA Standard, Z= DA 73.215, N= Not DA 73.215, _= Omni), Polarization (C,H,V,E), Beamtlt(Y,N,X)
"*=affixed to 'IN' or 'OUT' values = site inside protected contour.
< = Contour Overlap

FMCommander Single Allocation Study - 05-19-2014 - NGDC 30 SEC
W212BV.C's Overlaps (In= 2.85 km, Out= 3.22 km)

W212BV.C CH 265 D
Lat= 32 19 10.2, Lng= 88 41 23.3
0.01 kW 127.1 M HAAT, 253 M COR
Prot.= 60 dBu, Intef.= 100 dBu

W263CF CH 263 D BNPFT20130312ABA
Lat= 32 24 55.7, Lng= 88 40 40.2
0.25 kW 52.8 M HAAT, 172 M COR
Prot.= 60 dBu, Intef.= 100 dBu



Educational Media Foundation

5700 W Oaks Blvd
Rocklin, CA 95765

*Exhibit 13-A
Meridian, MS*

Compliance with C.F.R. 74.1204

The proposed FM Translator is located within the protected 60dBu contour of second adjacent channel station WJDQ, channel 267C1, Meridian, MS. According to 74.1204(a)(3), in order to protect second and third adjacent facilities, the difference in dBu between the two facilities must not exceed 40dBu.

The proposed ERP for W212BV.P:	10 watts
The proposed COR for W212BV.P:	60 meters
WJDQ F(50/50) contour at proposed site:	128.1dBu
The F(50/10) contour of proposed W212BV.P:	168.1dBu

The predicted distance to the 168.1dbu interfering contour is .09 meters. Taking into account the vertical elevation pattern of the Jampro JLCP single bay antenna and the height above ground of 60M, it has been determined that the interfering contour of 168.1dbu does not reach the ground. As seen in Exhibit 13-A1, the lowest elevation for this interfering contour is 59.9M above ground.

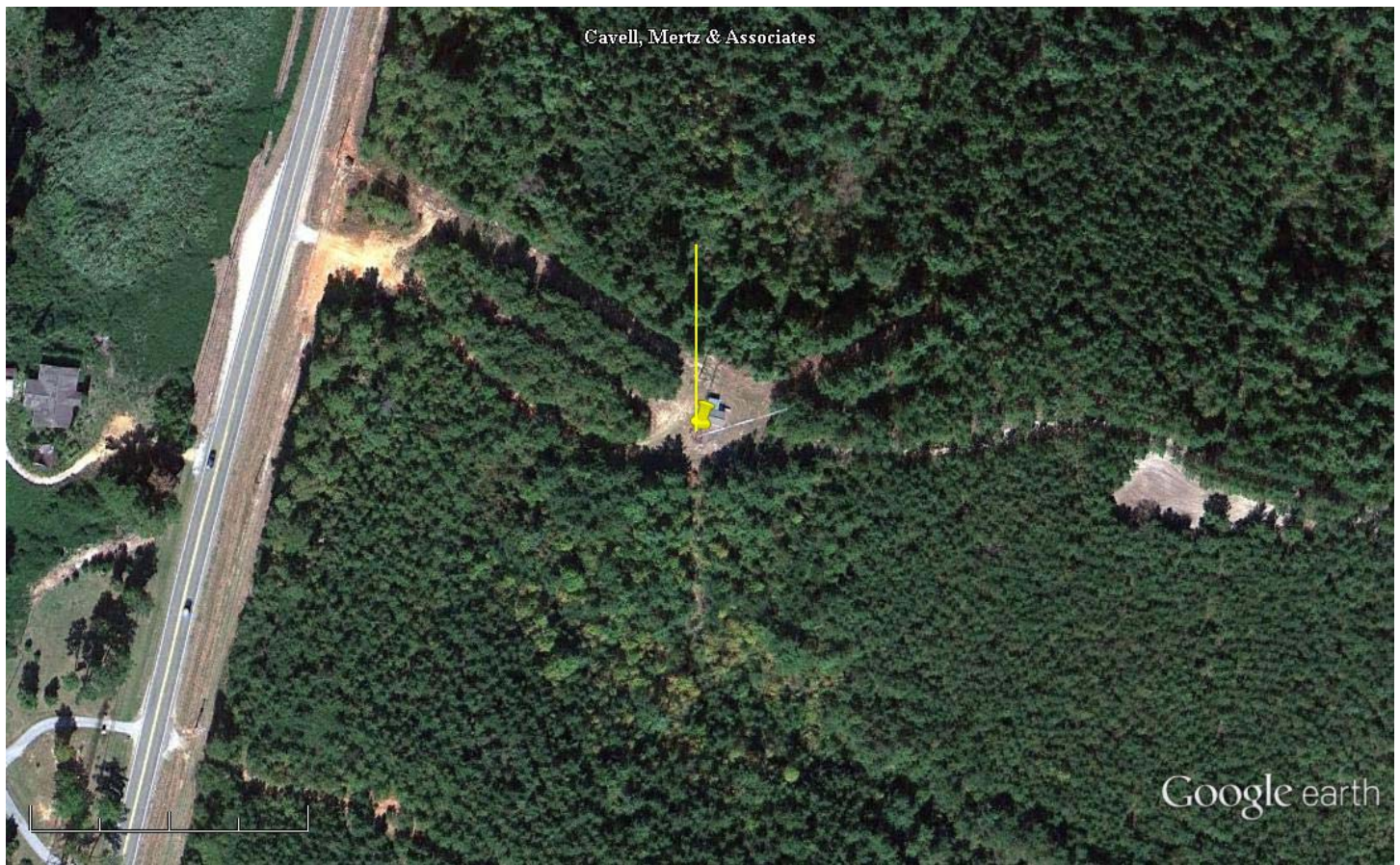
As can be seen in Exhibit 13–A2 there are no surrounding structures which are tall enough to enter the 59 meter aperture within the .09 meter radius from the base of the tower.

Therefore, EMF respectfully requests a waiver of C.F.R. 74.1204 based on no population within the area of predicted interference.

EXHIBIT 13 - A1
74.1204(d) Showing
W212BV
Meridian, MS

ERP (kw): 0.01
Height of Antenna above Ground (m): 60
Translator's IX Contour: 168.1
Antenna Type: JLCP-1BAY

<u>Depression Angle from Horizon</u>	<u>Antenna Relative Field</u>	<u>ERP (kw) from the Antenna RF</u>	<u>Dist. To IX Contour (m)</u>	<u>Height IX Contour Above Ground (m)</u>
0	1.000	0.0100	0.0873	60.000
5	0.994	0.0099	0.0868	59.992
10	0.975	0.0095	0.0851	59.985
15	0.940	0.0088	0.0821	59.979
20	0.910	0.0083	0.0794	59.973
25	0.880	0.0077	0.0768	59.968
30	0.840	0.0071	0.0733	59.963
35	0.770	0.0059	0.0672	59.961
40	0.710	0.0050	0.0620	59.960
45	0.650	0.0042	0.0567	59.960
50	0.600	0.0036	0.0524	59.960
55	0.520	0.0027	0.0454	59.963
60	0.450	0.0020	0.0393	59.966
65	0.380	0.0014	0.0332	59.970
70	0.320	0.0010	0.0279	59.974
75	0.250	0.0006	0.0218	59.979
80	0.180	0.0003	0.0157	59.985
85	0.140	0.0002	0.0122	59.988
90	0.010	0.0000	0.0009	59.999



Google earth

feet
meters



Yellow Pin:

NAD27

32 19' 10.2" N

88 41' 23.3" W

Yellow Marker: 60m at zero degrees true north