

TECHNICAL EXHIBIT
DTV MAXIMIZATION APPLICATION
STATION WTTV(DT)
BLOOMINGTON, INDIANA
CH 48 1000 KW 357 M

Technical Narrative

This Technical Exhibit supports an application for digital television (DTV) station WTTV(DT) for its "maximized" DTV operation at Bloomington, Indiana. This application requests a construction permit (CP) for WTTV(DT) digital television operation on channel 48 at Denver with a non-directional effective radiated power of 1000 kilowatts.

Proposed Facilities

Station WTTV(DT) proposes to operate DTV channel 48 from its authorized DTV construction permit facility. The antenna height above average terrain for the channel 48 DTV operation will be 357 meters. The proposed WTTV(DT) effective radiated power exceeds the Commission's *Appendix B* allocated maximum effective radiated power in some azimuthal directions for WTTV(DT).¹ Therefore, an allocation study was completed to ensure no prohibited interference would occur.

The proposed DTV transmitter site will be located at the authorized WTTV(DT) construction permit site. Therefore, the proposed site location is:

39° 24' 27" North Latitude
86° 08' 52" West Longitude

¹ See Seventh Report And Order And Eighth Further Notice Of Proposed Rule Making in the Matter of Advanced Television Systems and their Impact Upon the Existing Television Broadcast Service, MB Docket 87-268, Released August 6, 2007; Adopted August 1, 2007.

A sketch of antenna and pertinent elevations are included as Figure 1.

Figure 2 is a map showing the proposed DTV predicted coverage contour and the associated DTV appendix B Noise-Limited coverage contour. The extent of the contours have been calculated using the normal FCC prediction method.

Population Served

The herein proposed WTTV(DT) "maximized" facility is predicted to serve 2,301,625 persons, post-transition based upon the 2000 Census. WTTV(DT)'s associated Appendix B facility is predicted to serve 2,100,000 persons. Therefore, the herein proposed WTTV(DT) facility would serve more than 100% of WTTV(DT)'s Appendix B population. The OET-69 studies were conducted using a cell size of 2.0 km/side and distance increments for Longley-Rice analysis of 0.5 km.

Allocation Considerations

The proposed WTTV(DT) Channel 48 facility meets the requirements of Section 73.623 of the FCC Rules concerning predicted interference to other Appendix B DTV allotments. Longley-Rice interference analyses were conducted pursuant to the requirements of the FCC Rules; OET Bulletin No. 69; and published FCC guidelines for preparation of such interference analyses. The Longley-Rice interference analyses were conducted using the software developed by du Treil, Lundin &

Rackley, Inc. based on the FCC published software routines.² Stations selected for analysis were determined pursuant to the distance requirements outlined in the FCC DTV Processing Guidelines Public Notice. The results of the interference analyses for the proposed WTTV(DT) facility are summarized herein at Figure 3. As indicated therein, the proposed facility will meet the 0.5% criterion outlined in the FCC Rules and published guidelines with respect to all considered stations.³

Radiofrequency Electromagnetic Field Exposure

The proposed WTTV(DT) facilities were evaluated in terms of potential radiofrequency electromagnetic field exposure at ground level to workers and the general public. The radiation center for the proposed WTTV(DT) antenna is located 332 meters above ground level. The maximum effective radiated power is 1000 kilowatts. A "worst case" downward relative field value of 0.25 is assumed for the antenna's downward radiation. The calculated power density at a point 2 meters above ground level is 0.019 mW/cm². This is less than 5 percent of the Commission's recommended limit of 0.45 mW/cm² for channel 48 for an "uncontrolled" environment.

Access to the transmitting site is restricted and appropriately marked with warning signs. As this is a multi-user site, an agreement between the station will

2 The duTreil, Lundin & Rackley, Inc. DTV interference analysis program is based on the program and procedures outlined by the FCC in the Sixth Report and Order; subsequent Memorandum Opinion and Order; and FCC OET Bulletin No. 69. A nominal grid size resolution of 2 km was employed.

3 Interference analysis results reflect the net change in interference to a given station considering the interference predicted to occur from all other stations (i.e. "masking") including the allotment facility for WTTV(DT). This properly reflects the net interference change for determining compliance with the FCC 0.5% *de minimis* standard.

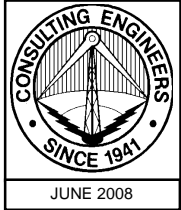
control access. In the event that workers or other authorized personnel enter restricted areas or climb the tower, appropriate measures will be taken to assure worker safety with respect to radio frequency radiation exposure. Such measures include reducing the average exposure by spreading out the work over a longer period of time, wearing "accepted" RFR protective clothing and/or RFR exposure monitors or scheduling work when the stations are at reduced power or shut down. The proposed WTTV(DT) operation appears to be otherwise categorically excluded from environmental processing.

It is noted that this statement only addresses the potential for radiofrequency electromagnetic field exposure. All other aspects of the environmental processing analysis will be or already have been provided to the FCC by the tower owner.

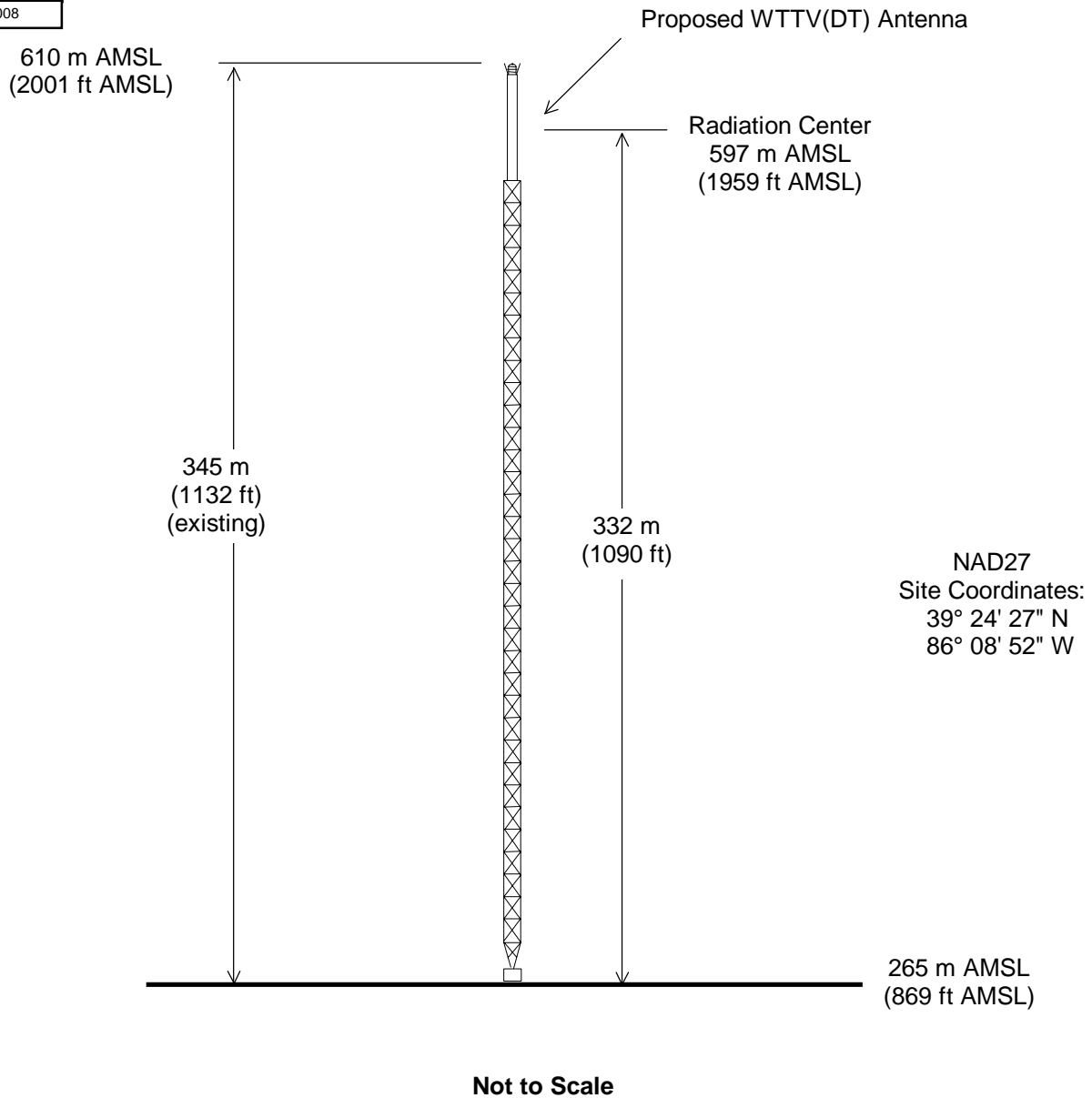
Charles Cooper

du Treil, Lundin & Rackley, Inc.
201 Fletcher Avenue
Sarasota, Florida 32437
941.329.6000

June 18, 2008



ASRN: 1026127



ANTENNA AND SUPPORTING STRUCTURE

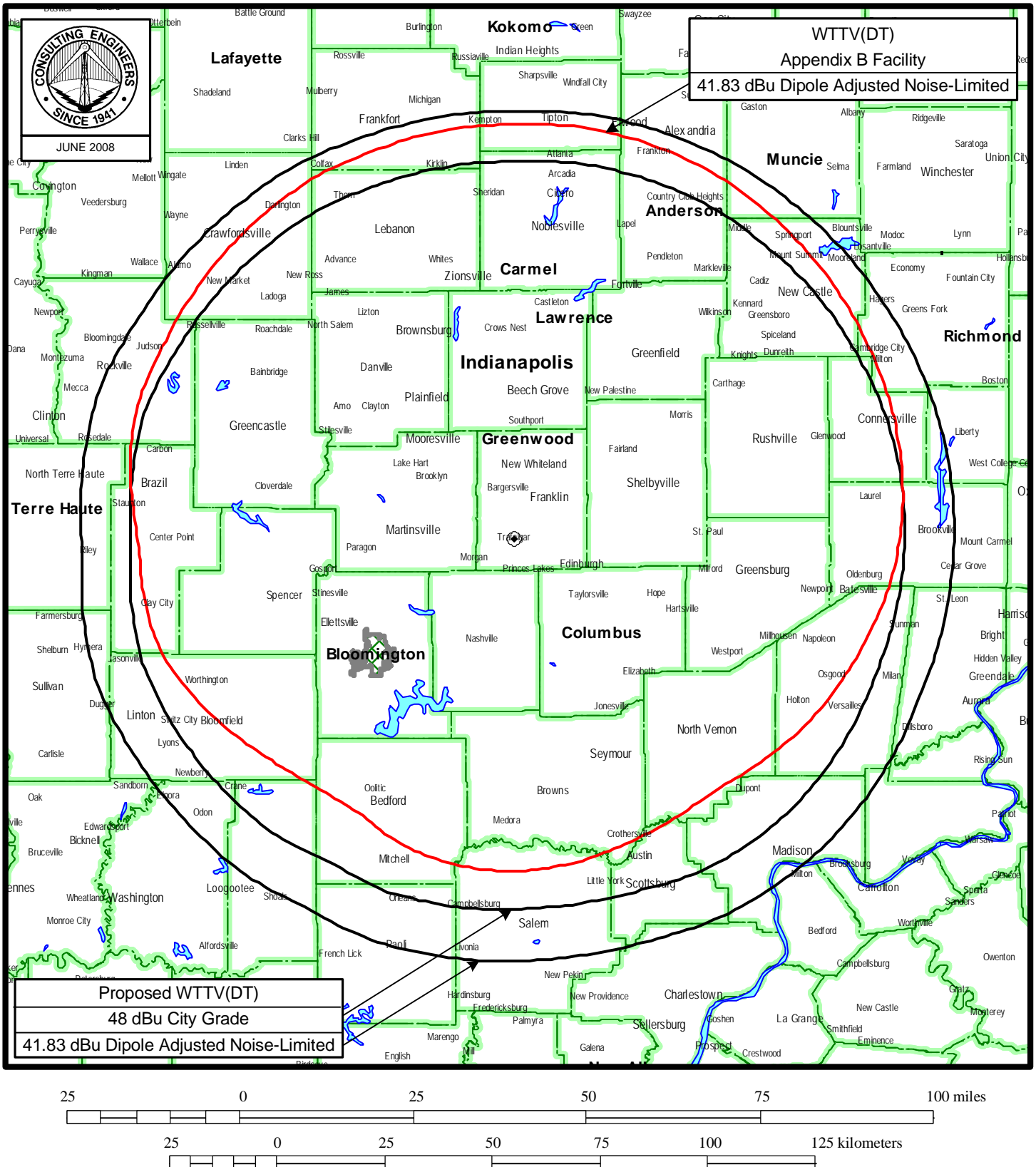
DTV STATION WTTV(DT)

BLOOMINGTON, INDIANA

CH 48 1000 KW 357 M

du Treil, Lundin & Rackley, Inc. Sarasota, Florida

Figure 2



PREDICTED COVERAGE CONTOURS

DTV STATION WTTV(DT)
BLOOMINGTON, INDIANA
CH 48 1000 KW 357 M

du Treil, Lundin & Rackley, Inc Sarasota, Florida

Figure 3

TW Census data selected 2000
Post Transition Data Base Selected /export/home/cdb/pt_tvdb.sff

TV INTERFERENCE and SPACING ANALYSIS PROGRAM

Date: 06-17-2008 Time: 22:49:23

Record Selected for Analysis

WTTV USERRECORD-01 BLOOMINGTON IN US
Channel 48 ERP 1000. kW HAAT 354. m RCMSL 00597 m
Latitude 039-24-27 Longitude 0086-08-52
Status APP Zone 2 Border
Last update Cutoff date Docket
Comments
Applicant

Cell Size for Service Analysis 2.0 km/side

Distance Increments for Longley-Rice Analysis 0.50 km

Facility meets maximum height/power limits

Azimuth (Deg)	ERP (kW)	HAAT (m)	41.0 dBu F(50,90) (km)
0.0	1000.000	341.3	101.0
45.0	1000.000	363.5	102.9
90.0	1000.000	373.0	103.7
135.0	1000.000	359.8	102.6
180.0	1000.000	325.8	99.6
225.0	1000.000	355.9	102.3
270.0	1000.000	355.2	102.2
315.0	1000.000	356.4	102.3

Evaluation toward Class A Stations

Contour overlap to Class A station
WBXI-CA 47 INDIANAPOLIS IN BLTTL 20000211AAQ

Class A Evaluation Complete

Proposed facility OK to FCC Monitoring Stations

Proposed facility OK toward West Virginia quiet zone

Proposed facility OK toward Table Mountain

Figure 3

Proposed facility is within the Canadian coordination distance
Distance to border = 376.3km

Proposed facility is beyond the Mexican coordination distance

Proposed station is OK toward AM broadcast stations

Start of Interference Analysis

Channel	Call	Proposed Station City/State	ARN
48	WTTV	BLOOMINGTON IN	USERRECORD01

Stations Potentially Affected by Proposed Station

Chan	Call	City/State	Dist(km)	Status	Application Ref. No.
45	WJYL-CA	CLARKSVILLE IN	118.7	LIC	BLTTA -20030210AAO
47	WBXI-CA	INDIANAPOLIS IN	40.3	LIC	BLTTL -20000211AAQ
47	WAVE	LOUISVILLE KY	118.7	LIC	BLCDT -20030306ABQ
47	WAVE	LOUISVILLE KY	118.7	PLN	DTVPLN -DTVP1675
48	WMEU-CA	BLUE ISLAND IL	277.2	LIC	BLTTA -20041008AAN
48	WCIA	CHAMPAIGN IL	211.5	CP MOD	BMPCDT -20050701ACC
48	WCIA	CHAMPAIGN IL	211.5	PLN	DTVPLN -DTVP1706
48	WHME-TV	SOUTH BEND IN	243.2	LIC	BLCDT -20060109ABG
48	WHME-TV	SOUTH BEND IN	243.2	PLN	DTVPLN -DTVP1708
48	WKGB-TV	BOWLING GREEN KY	261.1	LIC	BLEDT -20020304ALH
48	WKGB-TV	BOWLING GREEN KY	261.1	PLN	DTVPLN -DTVP1709
48	WMNT-CA	TOLEDO OH	333.5	LIC	BLTTL -19990607JB
48	WVLR	TAZEWELL TN	414.0	CP	BPCDT -20080328AFF
48	WVLR	TAZEWELL TN	414.0	PLN	DTVPLN -DTVP1720
48	WBME-TV	RACINE WI	408.7	LIC	BMLCDT -20070823AED
49	WDRB	LOUISVILLE KY	120.3	CP	BPCDT -20051130ACJ
49	WDRB	LOUISVILLE KY	120.3	PLN	DTVPLN -DTVP1740
50	WALV-CA	INDIANAPOLIS IN	58.0	LIC	BLTTA -20020621AAJ
50	WKKG-LP	KOKOMO IN	113.9	LIC	BLTTA -20041122AIH
51	WIWU-CA	MARION IN	140.9	LIC	BLTTA -20080422AAS

Analysis of Interference to Affected Station 1

Analysis of current record

Channel	Call	City/State	Application Ref. No.
45	WJYL-CA	CLARKSVILLE IN	BLTTA -20030210AAO

Stations Potentially Affecting This Station

Chan	Call	City/State	Dist(km)	Status	Application Ref. No.
38	WKMJ-TV	LOUISVILLE KY	0.3	LIC	BLEDT -20030410AAK
38	WKMJ-TV	LOUISVILLE KY	0.3	PLN	DTVPLN -DTVP1366
42	WCLJ-TV	BLOOMINGTON IN	118.2	LIC	BLCT -19870904KG
42	WCLJ-TV	BLOOMINGTON IN	118.2	PLN	DTVPLN -DTVP1501

Figure 3

42	WCLJ-TV	BLOOMINGTON IN	118.2	CP	BPCDT	-20080314ABE
42	WKLE	LEXINGTON KY	142.3	LIC	BLEDT	-20060926AJQ
42	WKLE	LEXINGTON KY	142.3	PLN	DTVPLN	-DTVP1503
43	WKZT-TV	ELIZABETHTOWN KY	76.4	LIC	BLEDT	-20011221ABK
43	WKZT-TV	ELIZABETHTOWN KY	76.4	PLN	DTVPLN	-DTVP1537
44	WKON	OWENTON KY	90.4	LIC	BLEDT	-20011121ABI
44	WKON	OWENTON KY	90.4	PLN	DTVPLN	-DTVP1576
45	WEVV	EVANSVILLE IN	159.1	LIC	BLCDT	-20080404ACD
45	WEVV	EVANSVILLE IN	159.1	PLN	DTVPLN	-DTVP1612
45	WXIN	INDIANAPOLIS IN	171.9	LIC	BLCDT	-20031003ABM
45	WXIN	INDIANAPOLIS IN	171.9	PLN	DTVPLN	-DTVP1613
45	960723LA	SIKESTON MO	344.5	APP	BPCT	-19960723LA
45	WRGT-TV	DAYTON OH	202.9	APP	BPCT	-19980617KE
45	WRGT-TV	DAYTON OH	202.9	LIC	BMLCT	-19860915KE
45	WTCI	CHATTANOOGA TN	354.8	LIC	BLET	-19941220KG
47	WAVE	LOUISVILLE KY	0.1	LIC	BLCDT	-20030306ABQ
47	WAVE	LOUISVILLE KY	0.1	PLN	DTVPLN	-DTVP1675
48	WTTV	BLOOMINGTON IN	118.7	CP	BPCDT	-20060707AFA
48	WTTV	BLOOMINGTON IN	118.7	PLN	DTVPLN	-DTVP1707
48	WTTV	BLOOMINGTON IN	118.7	LIC	BLCDT	-20060630ACD
48	960722KL	OWENSBORO KY	139.2	APP	BPCT	-19960722KL
48	WCET	CINCINNATI OH	141.1	LIC	BLET	-19740227KG
49	WDRB	LOUISVILLE KY	2.7	CP	BPCDT	-20051130ACJ
49	WDRB	LOUISVILLE KY	2.7	PLN	DTVPLN	-DTVP1740
48	WTTV	BLOOMINGTON IN	118.7	APP	USERRECORD-01	

Proposed station is beyond the site to
nearest cell evaluation distance

#####

Analysis of Interference to Affected Station 2

Analysis of current record

Channel	Call	City/State	Application Ref. No.
47	WBXI-CA	INDIANAPOLIS IN	BLTTL -20000211AAQ

Stations Potentially Affecting This Station

Chan	Call	City/State	Dist(km)	Status	Application Ref. No.
39	WKOI-TV	RICHMOND IN	133.3	CP	BPCDT -20080314ABK
39	WKOI-TV	RICHMOND IN	133.3	PLN	DTVPLN -DTVP1404
39	WKOI-TV	RICHMOND IN	133.3	LIC	BLCDT -20050920ABV
39	WFXW	TERRE HAUTE IN	121.0	CP MOD	BMPCDT -20070125ACT
39	WFXW	TERRE HAUTE IN	121.0	PLN	DTVPLN -DTVP1405
40	WHMB-TV	INDIANAPOLIS IN	14.5	LIC	BLCCT -19990922AAW
40	WHMB-TV	INDIANAPOLIS IN	14.5	APP	BSTA -20071113AEF
40	WHMB-TV	INDIANAPOLIS IN	14.5	APP	BSTA -20080505ABY
44	WDTI	INDIANAPOLIS IN	14.5	CP MOD	BMPEDT -20070523ACG
44	WDTI	INDIANAPOLIS IN	13.8	PLN	DTVPLN -DTVP1574
45	WXIN	INDIANAPOLIS IN	13.8	LIC	BLCDT -20031003ABM
45	WXIN	INDIANAPOLIS IN	13.8	PLN	DTVPLN -DTVP1613
47	WTTW	CHICAGO IL	265.4	LIC	BLEDT -20020408ABK
47	WTTW	CHICAGO IL	265.4	PLN	DTVPLN -DTVP1673
47	WTVP	PEORIA IL	305.0	LIC	BLET -19811118KJ

Figure 3

47	WAVE	LOUISVILLE KY	158.2	LIC	BLCDT	-20030306ABQ
47	WAVE	LOUISVILLE KY	158.2	PLN	DTVPLN	-DTVP1675
47	WSYM-TV	LANSING MI	325.3	LIC	BLCCT	-19821210KE
48	WTTV	BLOOMINGTON IN	40.3	CP	BPCDT	-20060707AFA
48	WTTV	BLOOMINGTON IN	40.3	PLN	DTVPLN	-DTVP1707
48	WTTV	BLOOMINGTON IN	40.3	LIC	BLCDT	-20060630ACD
48	WTTV	BLOOMINGTON IN	40.3	APP	USERRECORD-01	

Total scenarios = 2

Result key: 1
Scenario 1 Affected station 2
Before Analysis

Results for: 47N IN INDIANAPOLIS	BLTTL	20000211AAQ	LIC
	POPULATION	AREA (sq km)	
within Noise Limited Contour	893199	1251.2	
not affected by terrain losses	893199	1251.2	
lost to NTSC IX	40217	28.0	
lost to additional IX by ATV	30736	28.0	
lost to all IX	70953	56.0	

Potential Interfering Stations Included in above Scenario 1

40N IN INDIANAPOLIS	BLCT	19990922AAW	LIC
44A IN INDIANAPOLIS	DTVPLN	DTVP1574	PLN
45A IN INDIANAPOLIS	BLCDT	20031003ABM	LIC
48A IN BLOOMINGTON	DTVPLN	DTVP1707	PLN

After Analysis

Results for: 47N IN INDIANAPOLIS	BLTTL	20000211AAQ	LIC
	POPULATION	AREA (sq km)	
within Noise Limited Contour	893199	1251.2	
not affected by terrain losses	893199	1251.2	
lost to NTSC IX	40217	28.0	
lost to additional IX by ATV	30736	28.0	
lost to all IX	70953	56.0	

Potential Interfering Stations Included in above Scenario 1

40N IN INDIANAPOLIS	BLCT	19990922AAW	LIC
44A IN INDIANAPOLIS	DTVPLN	DTVP1574	PLN
45A IN INDIANAPOLIS	BLCDT	20031003ABM	LIC
48A IN BLOOMINGTON	USERRECORD01		APP

Percent new IX = 0.0000%

Result key: 2
Scenario 2 Affected station 2
Before Analysis

Results for: 47N IN INDIANAPOLIS	BLTTL	20000211AAQ	LIC
	POPULATION	AREA (sq km)	
within Noise Limited Contour	893199	1251.2	
not affected by terrain losses	893199	1251.2	

Figure 3

```

lost to NTSC IX          40217      28.0
lost to additional IX by ATV 30736      28.0
lost to all IX           70953      56.0

Potential Interfering Stations Included in above Scenario      2

40N IN INDIANAPOLIS      BLCT      19990922AAW  LIC
44A IN INDIANAPOLIS      DTVPLN    DTVP1574    PLN
45A IN INDIANAPOLIS      DTVPLN    DTVP1613    PLN
48A IN BLOOMINGTON       DTVPLN    DTVP1707    PLN

After Analysis

Results for: 47N IN INDIANAPOLIS      BLTTL      20000211AAQ  LIC
      POPULATION      AREA (sq km)
within Noise Limited Contour      893199      1251.2
not affected by terrain losses      893199      1251.2
lost to NTSC IX          40217      28.0
lost to additional IX by ATV      30736      28.0
lost to all IX           70953      56.0

Potential Interfering Stations Included in above Scenario      2

40N IN INDIANAPOLIS      BLCT      19990922AAW  LIC
44A IN INDIANAPOLIS      DTVPLN    DTVP1574    PLN
45A IN INDIANAPOLIS      DTVPLN    DTVP1613    PLN
48A IN BLOOMINGTON       USERRECORD01      APP

Percent new IX =      0.0000%

Worst case new IX      0.0000% Scenario      1

#####

Analysis of Interference to Affected Station      3

Analysis of current record
Channel      Call      City/State      Application Ref. No.
47      WAVE      LOUISVILLE KY      BLCDDT      -20030306ABQ

Stations Potentially Affecting This Station

Chan      Call      City/State      Dist(km) Status      Application Ref. No.
46      WFIE      EVANSVILLE IN      157.0      LIC      BLCDDT      -20050916ACR
46      WFIE      EVANSVILLE IN      157.0      PLN      DTVPLN      -DTVPL645
47      WTTW      CHICAGO IL      419.2      LIC      BLEDDT      -20020408ABK
47      WTTW      CHICAGO IL      419.2      PLN      DTVPLN      -DTVPL673
47      WRBU      EAST ST. LOUIS IL      405.8      LIC      BLCDDT      -20020510ABC
47      WRBU      EAST ST. LOUIS IL      405.8      PLN      DTVPLN      -DTVPL674
47      WLJT      LEXINGTON TN      385.1      CP MOD      BMPEDT      -20020426AAH
47      WLJT      LEXINGTON TN      385.1      PLN      DTVPLN      -DTVPL692
48      WTTV      BLOOMINGTON IN      118.7      PLN      DTVPLN      -DTVPL707
48      WKGB-TV      BOWLING GREEN KY      158.8      LIC      BLEDDT      -20020304ALH
48      WKGB-TV      BOWLING GREEN KY      158.8      PLN      DTVPLN      -DTVPL709
48      WTTV      BLOOMINGTON IN      118.7      APP      USERRECORD-01

```

Figure 3

```

Total scenarios =      2

Result key:      3
Scenario      1      Affected station      3
Before Analysis

Results for: 47A KY LOUISVILLE      BLCDDT      20030306ABQ  LIC
HAAT      392.0 m, ATV ERP 1000.0 kW
      POPULATION      AREA (sq km)
within Noise Limited Contour      1695962      29949.6
not affected by terrain losses      1682445      29400.9
lost to NTSC IX          0          0.0
lost to additional IX by ATV      1237      68.6
lost to ATV IX only      1237      68.6
lost to all IX           1237      68.6

Potential Interfering Stations Included in above Scenario      1

46A IN EVANSVILLE      BLCDDT      20050916ACR  LIC
48A IN BLOOMINGTON       DTVPLN    DTVP1707    PLN

After Analysis

Results for: 47A KY LOUISVILLE      BLCDDT      20030306ABQ  LIC
HAAT      392.0 m, ATV ERP 1000.0 kW
      POPULATION      AREA (sq km)
within Noise Limited Contour      1695962      29949.6
not affected by terrain losses      1682445      29400.9
lost to NTSC IX          0          0.0
lost to additional IX by ATV      6087      278.4
lost to ATV IX only      6087      278.4
lost to all IX           6087      278.4

Potential Interfering Stations Included in above Scenario      1

46A IN EVANSVILLE      BLCDDT      20050916ACR  LIC
48A IN BLOOMINGTON       USERRECORD01      APP

Percent new IX =      0.2885%

Result key:      4
Scenario      2      Affected station      3
Before Analysis

Results for: 47A KY LOUISVILLE      BLCDDT      20030306ABQ  LIC
HAAT      392.0 m, ATV ERP 1000.0 kW
      POPULATION      AREA (sq km)
within Noise Limited Contour      1695962      29949.6
not affected by terrain losses      1682445      29400.9
lost to NTSC IX          0          0.0
lost to additional IX by ATV      1237      68.6
lost to ATV IX only      1237      68.6
lost to all IX           1237      68.6

Potential Interfering Stations Included in above Scenario      2

```

Figure 3

46A IN EVANSVILLE DTVPLN DTVP1645 PLN
 48A IN BLOOMINGTON DTVPLN DTVP1707 PLN

After Analysis

Results for: 47A KY LOUISVILLE BLCDDT 20030306ABQ LIC
 HAAT 392.0 m, ATV ERP 1000.0 kW

	POPULATION	AREA (sq km)
within Noise Limited Contour	1695962	29949.6
not affected by terrain losses	1682445	29400.9
lost to NTSC IX	0	0.0
lost to additional IX by ATV	6087	278.4
lost to ATV IX only	6087	278.4
lost to all IX	6087	278.4

Potential Interfering Stations Included in above Scenario 2

46A IN EVANSVILLE DTVPLN DTVP1645 PLN
 48A IN BLOOMINGTON USERRECORD01 APP

Percent new IX = 0.2885%

Worst case new IX 0.2885% Scenario 1

#####

Analysis of Interference to Affected Station 4

Analysis of current record

Channel	Call	City/State	Application Ref. No.
47	WAVE	LOUISVILLE KY	DTVPLN -DTVP1675

Stations Potentially Affecting This Station

Chan	Call	City/State	Dist(km)	Status	Application Ref. No.
46	WFIE	EVANSVILLE IN	157.0	LIC	BLCDDT -20050916ACR
46	WFIE	EVANSVILLE IN	157.0	PLN	DTVPLN -DTVP1645
47	WTTW	CHICAGO IL	419.2	LIC	BLEDT -20020408ABK
47	WTTW	CHICAGO IL	419.2	PLN	DTVPLN -DTVP1673
47	WRBU	EAST ST. LOUIS IL	405.8	LIC	BLCDDT -20020510ABC
47	WRBU	EAST ST. LOUIS IL	405.8	PLN	DTVPLN -DTVP1674
47	WLJT	LEXINGTON TN	385.1	CP MOD	BMPEDT -20020426AAH
47	WLJT	LEXINGTON TN	385.1	PLN	DTVPLN -DTVP1692
48	WTTV	BLOOMINGTON IN	118.7	PLN	DTVPLN -DTVP1707
48	WKGB-TV	BOWLING GREEN KY	158.8	LIC	BLEDT -20020304ALH
48	WKGB-TV	BOWLING GREEN KY	158.8	PLN	DTVPLN -DTVP1709
48	WTTV	BLOOMINGTON IN	118.7	APP	USERRECORD-01

Total scenarios = 2

Result key: 5
 Scenario 1 Affected station 4
 Before Analysis

Figure 3

Results for: 47A KY LOUISVILLE DTVPLN DTVP1675 PLN
 HAAT 392.0 m, ATV ERP 1000.0 kW

	POPULATION	AREA (sq km)
within Noise Limited Contour	1695962	29949.6
not affected by terrain losses	1682445	29400.9
lost to NTSC IX	0	0.0
lost to additional IX by ATV	1237	68.6
lost to ATV IX only	1237	68.6
lost to all IX	1237	68.6

Potential Interfering Stations Included in above Scenario 1

46A IN EVANSVILLE BLCDDT 20050916ACR LIC
 48A IN BLOOMINGTON DTVPLN DTVP1707 PLN

After Analysis

Results for: 47A KY LOUISVILLE DTVPLN DTVP1675 PLN
 HAAT 392.0 m, ATV ERP 1000.0 kW

	POPULATION	AREA (sq km)
within Noise Limited Contour	1695962	29949.6
not affected by terrain losses	1682445	29400.9
lost to NTSC IX	0	0.0
lost to additional IX by ATV	6087	278.4
lost to ATV IX only	6087	278.4
lost to all IX	6087	278.4

Potential Interfering Stations Included in above Scenario 1

46A IN EVANSVILLE BLCDDT 20050916ACR LIC
 48A IN BLOOMINGTON USERRECORD01 APP

Percent new IX = 0.2885%

Result key: 6
 Scenario 2 Affected station 4
 Before Analysis

Results for: 47A KY LOUISVILLE DTVPLN DTVP1675 PLN
 HAAT 392.0 m, ATV ERP 1000.0 kW

	POPULATION	AREA (sq km)
within Noise Limited Contour	1695962	29949.6
not affected by terrain losses	1682445	29400.9
lost to NTSC IX	0	0.0
lost to additional IX by ATV	1237	68.6
lost to ATV IX only	1237	68.6
lost to all IX	1237	68.6

Potential Interfering Stations Included in above Scenario 2

46A IN EVANSVILLE DTVPLN DTVP1645 PLN
 48A IN BLOOMINGTON DTVPLN DTVP1707 PLN

After Analysis

Results for: 47A KY LOUISVILLE DTVPLN DTVP1675 PLN

Figure 3

```

HAAT  392.0 m, ATV ERP 1000.0 kW
      POPULATION  AREA (sq km)
within Noise Limited Contour  1695962  29949.6
not affected by terrain losses  1682445  29400.9
lost to NTSC IX                0        0.0
lost to additional IX by ATV    6087    278.4
lost to ATV IX only            6087    278.4
lost to all IX                 6087    278.4

Potential Interfering Stations Included in above Scenario  2

46A IN EVANSVILLE      DTVPLN  DTVP1645  PLN
48A IN BLOOMINGTON      USERRECORD01  APP

Percent new IX =      0.2885%

Worst case new IX      0.2885% Scenario      1

#####

Analysis of Interference to Affected Station  5

Analysis of current record
Channel      Call      City/State      Application Ref. No.
  48         WMEU-CA    BLUE ISLAND IL      BLTTA      -20041008AAN

Stations Potentially Affecting This Station

Chan  Call      City/State      Dist(km) Status  Application Ref. No.
  45  WSNS-TV  CHICAGO IL      42.2  LIC    BLCDDT  -20010612AIB
  45  WSNS-TV  CHICAGO IL      42.2  PLN    DTVPLN  -DTV1611
  47  WTTW     CHICAGO IL      42.2  LIC    BLEDDT  -20020408ABK
  47  WTTW     CHICAGO IL      42.2  PLN    DTVPLN  -DTV1673
  48  KPXR     CEDAR RAPIDS IA  343.4  LIC    BLCT    -19970513KE
  48  WCIA     CHAMPAIGN IL    166.7  CP MOD  BMPDDT  -20050701ACC
  48  WCIA     CHAMPAIGN IL    166.7  PLN    DTVPLN  -DTV1706
  48  WTTV     BLOOMINGTON IN  277.2  CP      BPCDDT  -20060707AFA
  48  WTTV     BLOOMINGTON IN  277.2  PLN    DTVPLN  -DTV1707
  48  WTTV     BLOOMINGTON IN  277.2  LIC    BLCDDT  -20060630ACD
  48  WHME-TV  SOUTH BEND IN   141.0  LIC    BLCDDT  -20060109ABG
  48  WHME-TV  SOUTH BEND IN   141.0  PLN    DTVPLN  -DTV1708
  48  960722KL OWENSBORO KY  392.6  APP     BPCT    -19960722KL
  48  WAQP     SAGINAW MI      363.9  LIC    BLCDDT  -20060824ADS
  48  WAQP     SAGINAW MI      363.9  PLN    DTVPLN  -DTV1711
  48  WCET     CINCINNATI OH   389.3  LIC    BLET    -19740227KG
  48  WBME-TV  RACINE WI       146.6  LIC    BMLCDDT -20070823AED
  48  WJJA     RACINE WI       172.4  PLN    DTVPLN  -DTV1726
  48  WBME-TV  RACINE WI       175.2  CP MOD  BMPDDT  -20070921ACR
  50  WXFT-TV  AURORA IL       42.2  CP      BPCDDT  -20080425ABK
  50  WXFT-TV  AURORA IL       42.2  PLN    DTVPLN  -DTV1765
  51  WPWR-TV  GARY IN         42.2  LIC    BLCDDT  -20050425ACE
  51  WPWR-TV  GARY IN         42.2  PLN    DTVPLN  -DTV1795
  62  WJYS     HAMMOND IN      6.0    LIC    BLCT    -19910405KF
  48  WTTV     BLOOMINGTON IN  277.2  APP     USERRECORD-01

Proposal causes no interference

```

Figure 3

```

#####

Analysis of Interference to Affected Station  6

Analysis of current record
Channel      Call      City/State      Application Ref. No.
  48         WCIA     CHAMPAIGN IL      BMPDDT      -20050701ACC

Stations Potentially Affecting This Station

Chan  Call      City/State      Dist(km) Status  Application Ref. No.
  47  WTTW     CHICAGO IL      208.6  LIC    BLEDDT  -20020408ABK
  47  WTTW     CHICAGO IL      208.6  PLN    DTVPLN  -DTV1673
  48  WTTV     BLOOMINGTON IN  211.5  PLN    DTVPLN  -DTV1707
  48  WHME-TV  SOUTH BEND IN   253.9  LIC    BLCDDT  -20060109ABG
  48  WHME-TV  SOUTH BEND IN   253.9  PLN    DTVPLN  -DTV1708
  48  WKGB-TV  BOWLING GREEN KY  370.5  LIC    BLEDDT  -20020304ALH
  48  WKGB-TV  BOWLING GREEN KY  370.5  PLN    DTVPLN  -DTV1709
  48  WBME-TV  RACINE WI       309.7  LIC    BMLCDDT -20070823AED
  48  WJJA     RACINE WI       334.5  PLN    DTVPLN  -DTV1726
  48  WBME-TV  RACINE WI       336.9  CP MOD  BMPDDT  -20070921ACR
  49  KLJB-TV  DAVENPORT IA    210.7  LIC    BLCDDT  -20050713ADL
  49  KLJB-TV  DAVENPORT IA    210.7  PLN    DTVPLN  -DTV1738
  48  WTTV     BLOOMINGTON IN  211.5  APP     USERRECORD-01

Total scenarios =      2

Result key:      7
Scenario      1  Affected station      6
Before Analysis

Results for: 48A IL CHAMPAIGN      BMPDDT      20050701ACC  CP
HAAT  245.0 m, ATV ERP 1000.0 kW
      POPULATION  AREA (sq km)
within Noise Limited Contour  763782  23524.1
not affected by terrain losses  763690  23512.0
lost to NTSC IX                0        0.0
lost to additional IX by ATV    1955    104.7
lost to ATV IX only            1955    104.7
lost to all IX                 1955    104.7

Potential Interfering Stations Included in above Scenario  1

48A IN SOUTH BEND      BLCDDT  20060109ABG  LIC
48A IN BLOOMINGTON    DTVPLN  DTV1707      PLN

After Analysis

Results for: 48A IL CHAMPAIGN      BMPDDT      20050701ACC  CP
HAAT  245.0 m, ATV ERP 1000.0 kW
      POPULATION  AREA (sq km)
within Noise Limited Contour  763782  23524.1
not affected by terrain losses  763690  23512.0

```

Figure 3

lost to NTSC IX	0	0.0
lost to additional IX by ATV	2557	253.8
lost to ATV IX only	2557	253.8
lost to all IX	2557	253.8

Potential Interfering Stations Included in above Scenario 1

48A IN SOUTH BEND	BLCDT	20060109ABG	LIC
48A IN BLOOMINGTON	USERRECORD01		APP

Percent new IX = 0.0790%

Result key: 8
Scenario 2 Affected station 6
Before Analysis

Results for: 48A IL CHAMPAIGN BMPCDT 20050701ACC CP
HAAT 245.0 m, ATV ERP 1000.0 kW

	POPULATION	AREA (sq km)
within Noise Limited Contour	763782	23524.1
not affected by terrain losses	763690	23512.0
lost to NTSC IX	0	0.0
lost to additional IX by ATV	1955	104.7
lost to ATV IX only	1955	104.7
lost to all IX	1955	104.7

Potential Interfering Stations Included in above Scenario 2

48A IN SOUTH BEND	DTVPLN	DTVP1708	PLN
48A IN BLOOMINGTON	DTVPLN	DTVP1707	PLN

After Analysis

Results for: 48A IL CHAMPAIGN BMPCDT 20050701ACC CP
HAAT 245.0 m, ATV ERP 1000.0 kW

	POPULATION	AREA (sq km)
within Noise Limited Contour	763782	23524.1
not affected by terrain losses	763690	23512.0
lost to NTSC IX	0	0.0
lost to additional IX by ATV	2557	253.8
lost to ATV IX only	2557	253.8
lost to all IX	2557	253.8

Potential Interfering Stations Included in above Scenario 2

48A IN SOUTH BEND	DTVPLN	DTVP1708	PLN
48A IN BLOOMINGTON	USERRECORD01		APP

Percent new IX = 0.0790%

Worst case new IX 0.0790% Scenario 1

#####

Analysis of Interference to Affected Station 7

Figure 3

Analysis of current record

Channel	Call	City/State	Application Ref. No.
48	WCIA	CHAMPAIGN IL	DTVPLN -DTVP1706

Stations Potentially Affecting This Station

Chan	Call	City/State	Dist(km)	Status	Application Ref. No.
47	WTTW	CHICAGO IL	208.6	LIC	BLEDT -20020408ABK
47	WTTW	CHICAGO IL	208.6	PLN	DTVPLN -DTVP1673
48	WTTV	BLOOMINGTON IN	211.5	PLN	DTVPLN -DTVP1707
48	WHME-TV	SOUTH BEND IN	253.9	LIC	BLCDT -20060109ABG
48	WHME-TV	SOUTH BEND IN	253.9	PLN	DTVPLN -DTVP1708
48	WKGB-TV	BOWLING GREEN KY	370.5	LIC	BLEDT -20020304ALH
48	WKGB-TV	BOWLING GREEN KY	370.5	PLN	DTVPLN -DTVP1709
48	WBME-TV	RACINE WI	309.7	LIC	BMLCDT -20070823AED
48	WJJA	RACINE WI	334.5	PLN	DTVPLN -DTVP1726
48	WBME-TV	RACINE WI	336.9	CP MOD	BMPCDT -20070921ACR
49	KLJB-TV	DAVENPORT IA	210.7	LIC	BLCDT -20050713ADL
49	KLJB-TV	DAVENPORT IA	210.7	PLN	DTVPLN -DTVP1738
48	WTTV	BLOOMINGTON IN	211.5	APP	USERRECORD-01

Total scenarios = 2

Result key: 9
Scenario 1 Affected station 7
Before Analysis

Results for: 48A IL CHAMPAIGN DTVPLN DTVP1706 PLN
HAAT 245.0 m, ATV ERP 1000.0 kW

	POPULATION	AREA (sq km)
within Noise Limited Contour	763782	23524.1
not affected by terrain losses	763690	23512.0
lost to NTSC IX	0	0.0
lost to additional IX by ATV	1955	104.7
lost to ATV IX only	1955	104.7
lost to all IX	1955	104.7

Potential Interfering Stations Included in above Scenario 1

48A IN SOUTH BEND	BLCDT	20060109ABG	LIC
48A IN BLOOMINGTON	DTVPLN	DTVP1707	PLN

After Analysis

Results for: 48A IL CHAMPAIGN DTVPLN DTVP1706 PLN
HAAT 245.0 m, ATV ERP 1000.0 kW

	POPULATION	AREA (sq km)
within Noise Limited Contour	763782	23524.1
not affected by terrain losses	763690	23512.0
lost to NTSC IX	0	0.0
lost to additional IX by ATV	2557	253.8
lost to ATV IX only	2557	253.8
lost to all IX	2557	253.8

Potential Interfering Stations Included in above Scenario 1

Figure 3

48A IN SOUTH BEND BLCDT 20060109ABG LIC
48A IN BLOOMINGTON USERRECORD01 APP

Percent new IX = 0.0790%

Result key: 10
Scenario 2 Affected station 7
Before Analysis

Results for: 48A IL CHAMPAIGN DTVPLN DTVP1706 PLN
HAAT 245.0 m, ATV ERP 1000.0 kW

	POPULATION	AREA (sq km)
within Noise Limited Contour	763782	23524.1
not affected by terrain losses	763690	23512.0
lost to NTSC IX	0	0.0
lost to additional IX by ATV	1955	104.7
lost to ATV IX only	1955	104.7
lost to all IX	1955	104.7

Potential Interfering Stations Included in above Scenario 2

48A IN SOUTH BEND DTVPLN DTVP1708 PLN
48A IN BLOOMINGTON DTVPLN DTVP1707 PLN

After Analysis

Results for: 48A IL CHAMPAIGN DTVPLN DTVP1706 PLN
HAAT 245.0 m, ATV ERP 1000.0 kW

	POPULATION	AREA (sq km)
within Noise Limited Contour	763782	23524.1
not affected by terrain losses	763690	23512.0
lost to NTSC IX	0	0.0
lost to additional IX by ATV	2557	253.8
lost to ATV IX only	2557	253.8
lost to all IX	2557	253.8

Potential Interfering Stations Included in above Scenario 2

48A IN SOUTH BEND DTVPLN DTVP1708 PLN
48A IN BLOOMINGTON USERRECORD01 APP

Percent new IX = 0.0790%

Worst case new IX 0.0790% Scenario 1

#####

Analysis of Interference to Affected Station 8

Analysis of current record

Channel	Call	City/State	Application Ref. No.
48	WHME-TV	SOUTH BEND IN	BLCDT -20060109ABG

Stations Potentially Affecting This Station

Figure 3

Chan	Call	City/State	Dist(km)	Status	Application	Ref. No.
47	WTTW	CHICAGO IL	126.4	LIC	BLEDT	-20020408ABK
47	WTTW	CHICAGO IL	126.4	PLN	DTVPLN	-DTVP1673
48	WCIA	CHAMPAIGN IL	253.9	CP MOD	BMPCDT	-20050701ACC
48	WCIA	CHAMPAIGN IL	253.9	PLN	DTVPLN	-DTVP1706
48	WTTV	BLOOMINGTON IN	243.2	PLN	DTVPLN	-DTVP1707
48	WAQP	SAGINAW MI	250.1	LIC	BLCDT	-20060824ADS
48	WAQP	SAGINAW MI	250.1	PLN	DTVPLN	-DTVP1711
48	WBME-TV	RACINE WI	197.0	LIC	BMLCDT	-20070823AED
48	WJJA	RACINE WI	218.9	PLN	DTVPLN	-DTVP1726
48	WBME-TV	RACINE WI	222.6	CP MOD	BMPCDT	-20070921ACR
48	WTTV	BLOOMINGTON IN	243.2	APP	USERRECORD-01	

Total scenarios = 8

Result key: 11
Scenario 1 Affected station 8
Before Analysis

Results for: 48A IN SOUTH BEND BLCDT 20060109ABG LIC
HAAT 295.0 m, ATV ERP 300.0 kW

	POPULATION	AREA (sq km)
within Noise Limited Contour	1241961	20269.2
not affected by terrain losses	1241961	20269.2
lost to NTSC IX	0	0.0
lost to additional IX by ATV	27304	278.2
lost to ATV IX only	27304	278.2
lost to all IX	27304	278.2

Potential Interfering Stations Included in above Scenario 1

47A IL CHICAGO	BLEDT	20020408ABK	LIC
48A IL CHAMPAIGN	BMPCDT	20050701ACC	CP
48A MI SAGINAW	BLCDT	20060824ADS	LIC
48A IN BLOOMINGTON	DTVPLN	DTVP1707	PLN

After Analysis

Results for: 48A IN SOUTH BEND BLCDT 20060109ABG LIC
HAAT 295.0 m, ATV ERP 300.0 kW

	POPULATION	AREA (sq km)
within Noise Limited Contour	1241961	20269.2
not affected by terrain losses	1241961	20269.2
lost to NTSC IX	0	0.0
lost to additional IX by ATV	29389	346.7
lost to ATV IX only	29389	346.7
lost to all IX	29389	346.7

Potential Interfering Stations Included in above Scenario 1

47A IL CHICAGO	BLEDT	20020408ABK	LIC
48A IL CHAMPAIGN	BMPCDT	20050701ACC	CP
48A MI SAGINAW	BLCDT	20060824ADS	LIC
48A IN BLOOMINGTON	USERRECORD01		APP

Figure 3

Percent new IX = 0.1717%

Result key: 12
Scenario 2 Affected station 8
Before Analysis

Results for: 48A IN SOUTH BEND BLCDT 20060109ABG LIC
HAAT 295.0 m, ATV ERP 300.0 kW

	POPULATION	AREA (sq km)
within Noise Limited Contour	1241961	20269.2
not affected by terrain losses	1241961	20269.2
lost to NTSC IX	0	0.0
lost to additional IX by ATV	27946	282.2
lost to ATV IX only	27946	282.2
lost to all IX	27946	282.2

Potential Interfering Stations Included in above Scenario 2

47A IL CHICAGO	BLEDT	20020408ABK	LIC
48A IL CHAMPAIGN	BMPCDT	20050701ACC	CP
48A MI SAGINAW	DTVPLN	DTVP1711	PLN
48A IN BLOOMINGTON	DTVPLN	DTVP1707	PLN

After Analysis

Results for: 48A IN SOUTH BEND BLCDT 20060109ABG LIC
HAAT 295.0 m, ATV ERP 300.0 kW

	POPULATION	AREA (sq km)
within Noise Limited Contour	1241961	20269.2
not affected by terrain losses	1241961	20269.2
lost to NTSC IX	0	0.0
lost to additional IX by ATV	30031	350.7
lost to ATV IX only	30031	350.7
lost to all IX	30031	350.7

Potential Interfering Stations Included in above Scenario 2

47A IL CHICAGO	BLEDT	20020408ABK	LIC
48A IL CHAMPAIGN	BMPCDT	20050701ACC	CP
48A MI SAGINAW	DTVPLN	DTVP1711	PLN
48A IN BLOOMINGTON	USERRECORD01		APP

Percent new IX = 0.1717%

Result key: 13
Scenario 3 Affected station 8
Before Analysis

Results for: 48A IN SOUTH BEND BLCDT 20060109ABG LIC
HAAT 295.0 m, ATV ERP 300.0 kW

	POPULATION	AREA (sq km)
within Noise Limited Contour	1241961	20269.2
not affected by terrain losses	1241961	20269.2
lost to NTSC IX	0	0.0
lost to additional IX by ATV	27304	278.2
lost to ATV IX only	27304	278.2
lost to all IX	27304	278.2

Figure 3

Potential Interfering Stations Included in above Scenario 3

47A IL CHICAGO	BLEDT	20020408ABK	LIC
48A IL CHAMPAIGN	DTVPLN	DTVP1706	PLN
48A MI SAGINAW	BLCDT	20060824ADS	LIC
48A IN BLOOMINGTON	DTVPLN	DTVP1707	PLN

After Analysis

Results for: 48A IN SOUTH BEND BLCDT 20060109ABG LIC
HAAT 295.0 m, ATV ERP 300.0 kW

	POPULATION	AREA (sq km)
within Noise Limited Contour	1241961	20269.2
not affected by terrain losses	1241961	20269.2
lost to NTSC IX	0	0.0
lost to additional IX by ATV	29389	346.7
lost to ATV IX only	29389	346.7
lost to all IX	29389	346.7

Potential Interfering Stations Included in above Scenario 3

47A IL CHICAGO	BLEDT	20020408ABK	LIC
48A IL CHAMPAIGN	DTVPLN	DTVP1706	PLN
48A MI SAGINAW	BLCDT	20060824ADS	LIC
48A IN BLOOMINGTON	USERRECORD01		APP

Percent new IX = 0.1717%

Result key: 14
Scenario 4 Affected station 8
Before Analysis

Results for: 48A IN SOUTH BEND BLCDT 20060109ABG LIC
HAAT 295.0 m, ATV ERP 300.0 kW

	POPULATION	AREA (sq km)
within Noise Limited Contour	1241961	20269.2
not affected by terrain losses	1241961	20269.2
lost to NTSC IX	0	0.0
lost to additional IX by ATV	27946	282.2
lost to ATV IX only	27946	282.2
lost to all IX	27946	282.2

Potential Interfering Stations Included in above Scenario 4

47A IL CHICAGO	BLEDT	20020408ABK	LIC
48A IL CHAMPAIGN	DTVPLN	DTVP1706	PLN
48A MI SAGINAW	DTVPLN	DTVP1711	PLN
48A IN BLOOMINGTON	DTVPLN	DTVP1707	PLN

After Analysis

Results for: 48A IN SOUTH BEND BLCDT 20060109ABG LIC
HAAT 295.0 m, ATV ERP 300.0 kW

	POPULATION	AREA (sq km)
within Noise Limited Contour	1241961	20269.2
not affected by terrain losses	1241961	20269.2

Figure 3

lost to NTSC IX 0 0.0
lost to additional IX by ATV 30031 350.7
lost to ATV IX only 30031 350.7
lost to all IX 30031 350.7

Potential Interfering Stations Included in above Scenario 4

47A IL CHICAGO	BLEDT	20020408ABK	LIC
48A IL CHAMPAIGN	DTVPLN	DTVP1706	PLN
48A MI SAGINAW	DTVPLN	DTVP1711	PLN
48A IN BLOOMINGTON	USERRECORD01		APP

Percent new IX = 0.1717%

Result key: 15
Scenario 5 Affected station 8
Before Analysis

Results for: 48A IN SOUTH BEND BLCDT 20060109ABG LIC
HAAT 295.0 m, ATV ERP 300.0 kW

	POPULATION	AREA (sq km)
within Noise Limited Contour	1241961	20269.2
not affected by terrain losses	1241961	20269.2
lost to NTSC IX	0	0.0
lost to additional IX by ATV	27304	278.2
lost to ATV IX only	27304	278.2
lost to all IX	27304	278.2

Potential Interfering Stations Included in above Scenario 5

47A IL CHICAGO	DTVPLN	DTVP1673	PLN
48A IL CHAMPAIGN	BMPCDT	20050701ACC	CP
48A MI SAGINAW	BLCDT	20060824ADS	LIC
48A IN BLOOMINGTON	DTVPLN	DTVP1707	PLN

After Analysis

Results for: 48A IN SOUTH BEND BLCDT 20060109ABG LIC
HAAT 295.0 m, ATV ERP 300.0 kW

	POPULATION	AREA (sq km)
within Noise Limited Contour	1241961	20269.2
not affected by terrain losses	1241961	20269.2
lost to NTSC IX	0	0.0
lost to additional IX by ATV	29389	346.7
lost to ATV IX only	29389	346.7
lost to all IX	29389	346.7

Potential Interfering Stations Included in above Scenario 5

47A IL CHICAGO	DTVPLN	DTVP1673	PLN
48A IL CHAMPAIGN	BMPCDT	20050701ACC	CP
48A MI SAGINAW	BLCDT	20060824ADS	LIC
48A IN BLOOMINGTON	USERRECORD01		APP

Percent new IX = 0.1717%

Result key: 16

Figure 3

Scenario 6 Affected station 8
Before Analysis

Results for: 48A IN SOUTH BEND BLCDT 20060109ABG LIC
HAAT 295.0 m, ATV ERP 300.0 kW

	POPULATION	AREA (sq km)
within Noise Limited Contour	1241961	20269.2
not affected by terrain losses	1241961	20269.2
lost to NTSC IX	0	0.0
lost to additional IX by ATV	27946	282.2
lost to ATV IX only	27946	282.2
lost to all IX	27946	282.2

Potential Interfering Stations Included in above Scenario 6

47A IL CHICAGO	DTVPLN	DTVP1673	PLN
48A IL CHAMPAIGN	BMPCDT	20050701ACC	CP
48A MI SAGINAW	DTVPLN	DTVP1711	PLN
48A IN BLOOMINGTON	DTVPLN	DTVP1707	PLN

After Analysis

Results for: 48A IN SOUTH BEND BLCDT 20060109ABG LIC
HAAT 295.0 m, ATV ERP 300.0 kW

	POPULATION	AREA (sq km)
within Noise Limited Contour	1241961	20269.2
not affected by terrain losses	1241961	20269.2
lost to NTSC IX	0	0.0
lost to additional IX by ATV	30031	350.7
lost to ATV IX only	30031	350.7
lost to all IX	30031	350.7

Potential Interfering Stations Included in above Scenario 6

47A IL CHICAGO	DTVPLN	DTVP1673	PLN
48A IL CHAMPAIGN	BMPCDT	20050701ACC	CP
48A MI SAGINAW	DTVPLN	DTVP1711	PLN
48A IN BLOOMINGTON	USERRECORD01		APP

Percent new IX = 0.1717%

Result key: 17
Scenario 7 Affected station 8
Before Analysis

Results for: 48A IN SOUTH BEND BLCDT 20060109ABG LIC
HAAT 295.0 m, ATV ERP 300.0 kW

	POPULATION	AREA (sq km)
within Noise Limited Contour	1241961	20269.2
not affected by terrain losses	1241961	20269.2
lost to NTSC IX	0	0.0
lost to additional IX by ATV	27304	278.2
lost to ATV IX only	27304	278.2
lost to all IX	27304	278.2

Potential Interfering Stations Included in above Scenario 7

Figure 3

47A IL CHICAGO	DTVPLN	DTVP1673	PLN
48A IL CHAMPAIGN	DTVPLN	DTVP1706	PLN
48A MI SAGINAW	BLCDDT	20060824ADS	LIC
48A IN BLOOMINGTON	DTVPLN	DTVP1707	PLN

After Analysis

Results for: 48A IN SOUTH BEND BLCDDT 20060109ABG LIC
 HAAT 295.0 m, ATV ERP 300.0 kW

	POPULATION	AREA (sq km)
within Noise Limited Contour	1241961	20269.2
not affected by terrain losses	1241961	20269.2
lost to NTSC IX	0	0.0
lost to additional IX by ATV	29389	346.7
lost to ATV IX only	29389	346.7
lost to all IX	29389	346.7

Potential Interfering Stations Included in above Scenario 7

47A IL CHICAGO	DTVPLN	DTVP1673	PLN
48A IL CHAMPAIGN	DTVPLN	DTVP1706	PLN
48A MI SAGINAW	BLCDDT	20060824ADS	LIC
48A IN BLOOMINGTON	USERRECORD01		APP

Percent new IX = 0.1717%

Result key: 18
 Scenario 8 Affected station 8
 Before Analysis

Results for: 48A IN SOUTH BEND BLCDDT 20060109ABG LIC
 HAAT 295.0 m, ATV ERP 300.0 kW

	POPULATION	AREA (sq km)
within Noise Limited Contour	1241961	20269.2
not affected by terrain losses	1241961	20269.2
lost to NTSC IX	0	0.0
lost to additional IX by ATV	27946	282.2
lost to ATV IX only	27946	282.2
lost to all IX	27946	282.2

Potential Interfering Stations Included in above Scenario 8

47A IL CHICAGO	DTVPLN	DTVP1673	PLN
48A IL CHAMPAIGN	DTVPLN	DTVP1706	PLN
48A MI SAGINAW	DTVPLN	DTVP1711	PLN
48A IN BLOOMINGTON	DTVPLN	DTVP1707	PLN

After Analysis

Results for: 48A IN SOUTH BEND BLCDDT 20060109ABG LIC
 HAAT 295.0 m, ATV ERP 300.0 kW

	POPULATION	AREA (sq km)
within Noise Limited Contour	1241961	20269.2
not affected by terrain losses	1241961	20269.2
lost to NTSC IX	0	0.0
lost to additional IX by ATV	30031	350.7
lost to ATV IX only	30031	350.7

Figure 3

lost to all IX 30031 350.7

Potential Interfering Stations Included in above Scenario 8

47A IL CHICAGO	DTVPLN	DTVP1673	PLN
48A IL CHAMPAIGN	DTVPLN	DTVP1706	PLN
48A MI SAGINAW	DTVPLN	DTVP1711	PLN
48A IN BLOOMINGTON	USERRECORD01		APP

Percent new IX = 0.1717%

Worst case new IX 0.1717% Scenario 2

#####

Analysis of Interference to Affected Station 9

Analysis of current record

Channel	Call	City/State	Application Ref. No.
48	WHME-TV	SOUTH BEND IN	DTVPLN -DTVP1708

Stations Potentially Affecting This Station

Chan	Call	City/State	Dist(km)	Status	Application Ref. No.
47	WTTW	CHICAGO IL	126.4	LIC	BLEDT -20020408ABK
47	WTTW	CHICAGO IL	126.4	PLN	DTVPLN -DTVP1673
48	WCIA	CHAMPAIGN IL	253.9	CP MOD	BMPCDT -20050701ACC
48	WCIA	CHAMPAIGN IL	253.9	PLN	DTVPLN -DTVP1706
48	WTTV	BLOOMINGTON IN	243.2	PLN	DTVPLN -DTVP1707
48	WAQP	SAGINAW MI	250.1	LIC	BLCDDT -20060824ADS
48	WAQP	SAGINAW MI	250.1	PLN	DTVPLN -DTVP1711
48	WBME-TV	RACINE WI	197.0	LIC	BMLCDDT -20070823AED
48	WJJA	RACINE WI	218.9	PLN	DTVPLN -DTVP1726
48	WBME-TV	RACINE WI	222.6	CP MOD	BMPCDT -20070921ACR
48	WTTV	BLOOMINGTON IN	243.2	APP	USERRECORD-01

Total scenarios = 8

Result key: 19
 Scenario 1 Affected station 9
 Before Analysis

Results for: 48A IN SOUTH BEND DTVPLN DTVP1708 PLN
 HAAT 295.0 m, ATV ERP 300.0 kW

	POPULATION	AREA (sq km)
within Noise Limited Contour	1241961	20269.2
not affected by terrain losses	1241961	20269.2
lost to NTSC IX	0	0.0
lost to additional IX by ATV	27304	278.2
lost to ATV IX only	27304	278.2
lost to all IX	27304	278.2

Potential Interfering Stations Included in above Scenario 1

Figure 3

47A IL CHICAGO	BLEDT	20020408ABK	LIC
48A IL CHAMPAIGN	BMPCDT	20050701ACC	CP
48A MI SAGINAW	BLCDT	20060824ADS	LIC
48A IN BLOOMINGTON	DTVPLN	DTVP1707	PLN

After Analysis

Results for: 48A IN SOUTH BEND	DTVPLN	DTVP1708	PLN
HAAT 295.0 m, ATV ERP 300.0 kW			
	POPULATION	AREA (sq km)	
within Noise Limited Contour	1241961	20269.2	
not affected by terrain losses	1241961	20269.2	
lost to NTSC IX	0	0.0	
lost to additional IX by ATV	29389	346.7	
lost to ATV IX only	29389	346.7	
lost to all IX	29389	346.7	

Potential Interfering Stations Included in above Scenario 1

47A IL CHICAGO	BLEDT	20020408ABK	LIC
48A IL CHAMPAIGN	BMPCDT	20050701ACC	CP
48A MI SAGINAW	BLCDT	20060824ADS	LIC
48A IN BLOOMINGTON	USERRECORD01		APP

Percent new IX = 0.1717%

Result key: 20
 Scenario 2 Affected station 9
 Before Analysis

Results for: 48A IN SOUTH BEND	DTVPLN	DTVP1708	PLN
HAAT 295.0 m, ATV ERP 300.0 kW			
	POPULATION	AREA (sq km)	
within Noise Limited Contour	1241961	20269.2	
not affected by terrain losses	1241961	20269.2	
lost to NTSC IX	0	0.0	
lost to additional IX by ATV	27946	282.2	
lost to ATV IX only	27946	282.2	
lost to all IX	27946	282.2	

Potential Interfering Stations Included in above Scenario 2

47A IL CHICAGO	BLEDT	20020408ABK	LIC
48A IL CHAMPAIGN	BMPCDT	20050701ACC	CP
48A MI SAGINAW	DTVPLN	DTVP1711	PLN
48A IN BLOOMINGTON	DTVPLN	DTVP1707	PLN

After Analysis

Results for: 48A IN SOUTH BEND	DTVPLN	DTVP1708	PLN
HAAT 295.0 m, ATV ERP 300.0 kW			
	POPULATION	AREA (sq km)	
within Noise Limited Contour	1241961	20269.2	
not affected by terrain losses	1241961	20269.2	
lost to NTSC IX	0	0.0	
lost to additional IX by ATV	30031	350.7	
lost to ATV IX only	30031	350.7	

Figure 3

lost to all IX 30031 350.7

Potential Interfering Stations Included in above Scenario 2

47A IL CHICAGO	BLEDT	20020408ABK	LIC
48A IL CHAMPAIGN	BMPCDT	20050701ACC	CP
48A MI SAGINAW	DTVPLN	DTVP1711	PLN
48A IN BLOOMINGTON	USERRECORD01		APP

Percent new IX = 0.1717%

Result key: 21
 Scenario 3 Affected station 9
 Before Analysis

Results for: 48A IN SOUTH BEND	DTVPLN	DTVP1708	PLN
HAAT 295.0 m, ATV ERP 300.0 kW			
	POPULATION	AREA (sq km)	
within Noise Limited Contour	1241961	20269.2	
not affected by terrain losses	1241961	20269.2	
lost to NTSC IX	0	0.0	
lost to additional IX by ATV	27304	278.2	
lost to ATV IX only	27304	278.2	
lost to all IX	27304	278.2	

Potential Interfering Stations Included in above Scenario 3

47A IL CHICAGO	BLEDT	20020408ABK	LIC
48A IL CHAMPAIGN	DTVPLN	DTVP1706	PLN
48A MI SAGINAW	BLCDT	20060824ADS	LIC
48A IN BLOOMINGTON	DTVPLN	DTVP1707	PLN

After Analysis

Results for: 48A IN SOUTH BEND	DTVPLN	DTVP1708	PLN
HAAT 295.0 m, ATV ERP 300.0 kW			
	POPULATION	AREA (sq km)	
within Noise Limited Contour	1241961	20269.2	
not affected by terrain losses	1241961	20269.2	
lost to NTSC IX	0	0.0	
lost to additional IX by ATV	29389	346.7	
lost to ATV IX only	29389	346.7	
lost to all IX	29389	346.7	

Potential Interfering Stations Included in above Scenario 3

47A IL CHICAGO	BLEDT	20020408ABK	LIC
48A IL CHAMPAIGN	DTVPLN	DTVP1706	PLN
48A MI SAGINAW	BLCDT	20060824ADS	LIC
48A IN BLOOMINGTON	USERRECORD01		APP

Percent new IX = 0.1717%

Result key: 22
 Scenario 4 Affected station 9
 Before Analysis

Figure 3

Results for: 48A IN SOUTH BEND DTVPLN DTVP1708 PLN
 HAAT 295.0 m, ATV ERP 300.0 kW

	POPULATION	AREA (sq km)
within Noise Limited Contour	1241961	20269.2
not affected by terrain losses	1241961	20269.2
lost to NTSC IX	0	0.0
lost to additional IX by ATV	27946	282.2
lost to ATV IX only	27946	282.2
lost to all IX	27946	282.2

Potential Interfering Stations Included in above Scenario 4

47A IL CHICAGO	BLEDT	20020408ABK	LIC
48A IL CHAMPAIGN	DTVPLN	DTV1706	PLN
48A MI SAGINAW	DTVPLN	DTV1711	PLN
48A IN BLOOMINGTON	DTVPLN	DTV1707	PLN

After Analysis

Results for: 48A IN SOUTH BEND DTVPLN DTVP1708 PLN
 HAAT 295.0 m, ATV ERP 300.0 kW

	POPULATION	AREA (sq km)
within Noise Limited Contour	1241961	20269.2
not affected by terrain losses	1241961	20269.2
lost to NTSC IX	0	0.0
lost to additional IX by ATV	30031	350.7
lost to ATV IX only	30031	350.7
lost to all IX	30031	350.7

Potential Interfering Stations Included in above Scenario 4

47A IL CHICAGO	BLEDT	20020408ABK	LIC
48A IL CHAMPAIGN	DTVPLN	DTV1706	PLN
48A MI SAGINAW	DTVPLN	DTV1711	PLN
48A IN BLOOMINGTON	USERRECORD01		APP

Percent new IX = 0.1717%

Result key: 23
 Scenario 5 Affected station 9
 Before Analysis

Results for: 48A IN SOUTH BEND DTVPLN DTVP1708 PLN
 HAAT 295.0 m, ATV ERP 300.0 kW

	POPULATION	AREA (sq km)
within Noise Limited Contour	1241961	20269.2
not affected by terrain losses	1241961	20269.2
lost to NTSC IX	0	0.0
lost to additional IX by ATV	27304	278.2
lost to ATV IX only	27304	278.2
lost to all IX	27304	278.2

Potential Interfering Stations Included in above Scenario 5

47A IL CHICAGO	DTVPLN	DTV1673	PLN
48A IL CHAMPAIGN	BMPCDT	20050701ACC	CP
48A MI SAGINAW	BLCDT	20060824ADS	LIC

Figure 3

48A IN BLOOMINGTON DTVPLN DTVP1707 PLN

After Analysis

Results for: 48A IN SOUTH BEND DTVPLN DTVP1708 PLN
 HAAT 295.0 m, ATV ERP 300.0 kW

	POPULATION	AREA (sq km)
within Noise Limited Contour	1241961	20269.2
not affected by terrain losses	1241961	20269.2
lost to NTSC IX	0	0.0
lost to additional IX by ATV	29389	346.7
lost to ATV IX only	29389	346.7
lost to all IX	29389	346.7

Potential Interfering Stations Included in above Scenario 5

47A IL CHICAGO	DTVPLN	DTV1673	PLN
48A IL CHAMPAIGN	BMPCDT	20050701ACC	CP
48A MI SAGINAW	BLCDT	20060824ADS	LIC
48A IN BLOOMINGTON	USERRECORD01		APP

Percent new IX = 0.1717%

Result key: 24
 Scenario 6 Affected station 9
 Before Analysis

Results for: 48A IN SOUTH BEND DTVPLN DTVP1708 PLN
 HAAT 295.0 m, ATV ERP 300.0 kW

	POPULATION	AREA (sq km)
within Noise Limited Contour	1241961	20269.2
not affected by terrain losses	1241961	20269.2
lost to NTSC IX	0	0.0
lost to additional IX by ATV	27946	282.2
lost to ATV IX only	27946	282.2
lost to all IX	27946	282.2

Potential Interfering Stations Included in above Scenario 6

47A IL CHICAGO	DTVPLN	DTV1673	PLN
48A IL CHAMPAIGN	BMPCDT	20050701ACC	CP
48A MI SAGINAW	DTVPLN	DTV1711	PLN
48A IN BLOOMINGTON	DTVPLN	DTV1707	PLN

After Analysis

Results for: 48A IN SOUTH BEND DTVPLN DTVP1708 PLN
 HAAT 295.0 m, ATV ERP 300.0 kW

	POPULATION	AREA (sq km)
within Noise Limited Contour	1241961	20269.2
not affected by terrain losses	1241961	20269.2
lost to NTSC IX	0	0.0
lost to additional IX by ATV	30031	350.7
lost to ATV IX only	30031	350.7
lost to all IX	30031	350.7

Potential Interfering Stations Included in above Scenario 6

Figure 3

47A IL CHICAGO	DTVPLN	DTVP1673	PLN
48A IL CHAMPAIGN	BMPCDT	20050701ACC	CP
48A MI SAGINAW	DTVPLN	DTVP1711	PLN
48A IN BLOOMINGTON	USERRECORD01		APP

Percent new IX = 0.1717%

Result key: 25
 Scenario 7 Affected station 9
 Before Analysis

Results for: 48A IN SOUTH BEND	DTVPLN	DTVP1708	PLN
HAAT 295.0 m, ATV ERP 300.0 kW			
	POPULATION	AREA (sq km)	
within Noise Limited Contour	1241961	20269.2	
not affected by terrain losses	1241961	20269.2	
lost to NTSC IX	0	0.0	
lost to additional IX by ATV	27304	278.2	
lost to ATV IX only	27304	278.2	
lost to all IX	27304	278.2	

Potential Interfering Stations Included in above Scenario 7

47A IL CHICAGO	DTVPLN	DTVP1673	PLN
48A IL CHAMPAIGN	DTVPLN	DTVP1706	PLN
48A MI SAGINAW	BLCDT	20060824ADS	LIC
48A IN BLOOMINGTON	DTVPLN	DTVP1707	PLN

After Analysis

Results for: 48A IN SOUTH BEND	DTVPLN	DTVP1708	PLN
HAAT 295.0 m, ATV ERP 300.0 kW			
	POPULATION	AREA (sq km)	
within Noise Limited Contour	1241961	20269.2	
not affected by terrain losses	1241961	20269.2	
lost to NTSC IX	0	0.0	
lost to additional IX by ATV	29389	346.7	
lost to ATV IX only	29389	346.7	
lost to all IX	29389	346.7	

Potential Interfering Stations Included in above Scenario 7

47A IL CHICAGO	DTVPLN	DTVP1673	PLN
48A IL CHAMPAIGN	DTVPLN	DTVP1706	PLN
48A MI SAGINAW	BLCDT	20060824ADS	LIC
48A IN BLOOMINGTON	USERRECORD01		APP

Percent new IX = 0.1717%

Result key: 26
 Scenario 8 Affected station 9
 Before Analysis

Results for: 48A IN SOUTH BEND	DTVPLN	DTVP1708	PLN
HAAT 295.0 m, ATV ERP 300.0 kW			
	POPULATION	AREA (sq km)	

Figure 3

within Noise Limited Contour	1241961	20269.2
not affected by terrain losses	1241961	20269.2
lost to NTSC IX	0	0.0
lost to additional IX by ATV	27946	282.2
lost to ATV IX only	27946	282.2
lost to all IX	27946	282.2

Potential Interfering Stations Included in above Scenario 8

47A IL CHICAGO	DTVPLN	DTVP1673	PLN
48A IL CHAMPAIGN	DTVPLN	DTVP1706	PLN
48A MI SAGINAW	DTVPLN	DTVP1711	PLN
48A IN BLOOMINGTON	DTVPLN	DTVP1707	PLN

After Analysis

Results for: 48A IN SOUTH BEND	DTVPLN	DTVP1708	PLN
HAAT 295.0 m, ATV ERP 300.0 kW			
	POPULATION	AREA (sq km)	
within Noise Limited Contour	1241961	20269.2	
not affected by terrain losses	1241961	20269.2	
lost to NTSC IX	0	0.0	
lost to additional IX by ATV	30031	350.7	
lost to ATV IX only	30031	350.7	
lost to all IX	30031	350.7	

Potential Interfering Stations Included in above Scenario 8

47A IL CHICAGO	DTVPLN	DTVP1673	PLN
48A IL CHAMPAIGN	DTVPLN	DTVP1706	PLN
48A MI SAGINAW	DTVPLN	DTVP1711	PLN
48A IN BLOOMINGTON	USERRECORD01		APP

Percent new IX = 0.1717%

Worst case new IX 0.1717% Scenario 2

#####

Analysis of Interference to Affected Station 10

Analysis of current record

Channel	Call	City/State	Application	Ref. No.
48	WKGB-TV	BOWLING GREEN KY	BLEDT	-20020304ALH

Stations Potentially Affecting This Station

Chan	Call	City/State	Dist(km)	Status	Application	Ref. No.
47	WAVE	LOUISVILLE KY	158.8	LIC	BLCDT	-20030306ABQ
47	WAVE	LOUISVILLE KY	158.8	PLN	DTVPLN	-DTVP1675
48	KVTJ	JONESBORO AR	385.1	CP	BPCDT	-20080318ABM
48	KVTJ	JONESBORO AR	385.1	PLN	DTVPLN	-DTVP1696
48	WUVG-TV	ATHENS GA	419.8	LIC	BLCDT	-20030805AJ0
48	WUVG-TV	ATHENS GA	419.8	PLN	DTVPLN	-DTVP1705
48	WCIA	CHAMPAIGN IL	370.5	CP MOD	BMPCDT	-20050701ACC

Figure 3

48	WCIA	CHAMPAIGN IL	370.5	PLN	DTVPLN	-DTVPl706
48	WTTV	BLOOMINGTON IN	261.1	PLN	DTVPLN	-DTVPl707
48	WVLR	TAZEWELL TN	283.4	CP	BPCDT	-20080328AFF
48	WVLR	TAZEWELL TN	283.4	PLN	DTVPLN	-DTVPl720
49	WDRB	LOUISVILLE KY	156.2	CP	BPCDT	-20051130ACJ
49	WDRB	LOUISVILLE KY	156.2	PLN	DTVPLN	-DTVPl740
49	WDKA	PADUCAH KY	206.8	PLN	DTVPLN	-DTVPl741
49	WDKA	PADUCAH KY	206.8	CP	BPCDT	-20080317AIT
48	WTTV	BLOOMINGTON IN	261.1	APP	USERRECORD-01	

Total scenarios = 1

Result key: 27
 Scenario 1 Affected station 10
 Before Analysis

Results for: 48A KY BOWLING GREEN BLEDT 20020304ALH LIC
 HAAT 234.0 m, ATV ERP 54.8 kW

	POPULATION	AREA (sq km)
within Noise Limited Contour	343886	13701.8
not affected by terrain losses	340970	13525.6
lost to NTSC IX	0	0.0
lost to additional IX by ATV	0	0.0
lost to ATV IX only	0	0.0
lost to all IX	0	0.0

Potential Interfering Stations Included in above Scenario 1

After Analysis

Results for: 48A KY BOWLING GREEN BLEDT 20020304ALH LIC
 HAAT 234.0 m, ATV ERP 54.8 kW

	POPULATION	AREA (sq km)
within Noise Limited Contour	343886	13701.8
not affected by terrain losses	340970	13525.6
lost to NTSC IX	0	0.0
lost to additional IX by ATV	1040	112.1
lost to ATV IX only	1040	112.1
lost to all IX	1040	112.1

Potential Interfering Stations Included in above Scenario 1

48A IN BLOOMINGTON USERRECORD01 APP

Percent new IX = 0.3050%

Worst case new IX 0.3050% Scenario 1

#####

Analysis of Interference to Affected Station 11

Analysis of current record

Figure 3

Channel	Call	City/State	Application	Ref. No.
48	WKGB-TV	BOWLING GREEN KY	DTVPLN	-DTVPl709

Stations Potentially Affecting This Station

Chan	Call	City/State	Dist(km)	Status	Application	Ref. No.
47	WAVE	LOUISVILLE KY	158.8	LIC	BLCDT	-20030306ABQ
47	WAVE	LOUISVILLE KY	158.8	PLN	DTVPLN	-DTVPl675
48	KVTJ	JONESBORO AR	385.1	CP	BPCDT	-20080318ABM
48	KVTJ	JONESBORO AR	385.1	PLN	DTVPLN	-DTVPl696
48	WUVG-TV	ATHENS GA	419.8	LIC	BLCDT	-20030805AJO
48	WUVG-TV	ATHENS GA	419.8	PLN	DTVPLN	-DTVPl705
48	WCIA	CHAMPAIGN IL	370.5	CP MOD	BMPCDT	-20050701ACC
48	WCIA	CHAMPAIGN IL	370.5	PLN	DTVPLN	-DTVPl706
48	WTTV	BLOOMINGTON IN	261.1	PLN	DTVPLN	-DTVPl707
48	WVLR	TAZEWELL TN	283.4	CP	BPCDT	-20080328AFF
48	WVLR	TAZEWELL TN	283.4	PLN	DTVPLN	-DTVPl720
49	WDRB	LOUISVILLE KY	156.2	CP	BPCDT	-20051130ACJ
49	WDRB	LOUISVILLE KY	156.2	PLN	DTVPLN	-DTVPl740
49	WDKA	PADUCAH KY	206.8	PLN	DTVPLN	-DTVPl741
49	WDKA	PADUCAH KY	206.8	CP	BPCDT	-20080317AIT
48	WTTV	BLOOMINGTON IN	261.1	APP	USERRECORD-01	

Total scenarios = 1

Result key: 28
 Scenario 1 Affected station 11
 Before Analysis

Results for: 48A KY BOWLING GREEN DTVPLN DTVPl709 PLN
 HAAT 234.0 m, ATV ERP 54.8 kW

	POPULATION	AREA (sq km)
within Noise Limited Contour	343886	13701.8
not affected by terrain losses	340970	13525.6
lost to NTSC IX	0	0.0
lost to additional IX by ATV	0	0.0
lost to ATV IX only	0	0.0
lost to all IX	0	0.0

Potential Interfering Stations Included in above Scenario 1

After Analysis

Results for: 48A KY BOWLING GREEN DTVPLN DTVPl709 PLN
 HAAT 234.0 m, ATV ERP 54.8 kW

	POPULATION	AREA (sq km)
within Noise Limited Contour	343886	13701.8
not affected by terrain losses	340970	13525.6
lost to NTSC IX	0	0.0
lost to additional IX by ATV	1040	112.1
lost to ATV IX only	1040	112.1
lost to all IX	1040	112.1

Potential Interfering Stations Included in above Scenario 1

Figure 3

48A IN BLOOMINGTON USERRECORD01 APP

Percent new IX = 0.3050%

Worst case new IX 0.3050% Scenario 1

#####

Analysis of Interference to Affected Station 12

Analysis of current record

Channel	Call	City/State	Application Ref. No.
48	WMNT-CA	TOLEDO OH	BLTTL -19990607JB

Stations Potentially Affecting This Station

Chan	Call	City/State	Dist(km)	Status	Application Ref. No.
40	WKAR-TV	EAST LANSING MI	137.4	CP	BPEDT -20080314ACE
40	WKAR-TV	EAST LANSING MI	137.4	PLN	DTVPLN -DTVP1441
41	WXYZ-TV	DETROIT MI	93.7	LIC	BLCDT -20030325ABI
41	WXYZ-TV	DETROIT MI	93.7	PLN	DTVPLN -DTVP1476
41	WXYZ-TV	DETROIT MI	93.7	CP	BPCDT -20080228AAC
44	WWJ-TV	DETROIT MI	93.1	APP	BPCDT -20040803AAX
44	WWJ-TV	DETROIT MI	93.1	PLN	DTVPLN -DTVP1581
44	WWJ-TV	DETROIT MI	93.1	CP	BPCDT -20080130AOM
44	WWJ-TV	DETROIT MI	93.1	LIC	BLCDT -19990720LH
44	WTLW	LIMA OH	113.0	CP	BPCDT -20080402AAC
44	WTLW	LIMA OH	113.0	PLN	DTVPLN -DTVP1591
45	WDIV-TV	DETROIT MI	96.0	LIC	BLCDT -19990429KX
45	WDIV-TV	DETROIT MI	96.0	PLN	DTVPLN -DTVP1617
46	WUPW	TOLEDO OH	7.1	LIC	BLCDT -20030411AAF
46	WUPW	TOLEDO OH	7.1	PLN	DTVPLN -DTVP1653
47	WSYM-TV	LANSING MI	129.4	LIC	BLCT -19821210KE
48	WTTV	BLOOMINGTON IN	333.5	CP	BPEDT -20060707AFA
48	WTTV	BLOOMINGTON IN	333.5	PLN	DTVPLN -DTVP1707
48	WTTV	BLOOMINGTON IN	333.5	LIC	BLCDT -20060630ACD
48	WHME-TV	SOUTH BEND IN	218.6	LIC	BLCDT -20060109ABG
48	WHME-TV	SOUTH BEND IN	218.6	PLN	DTVPLN -DTVP1708
48	W48BZ	ANN ARBOR MI	71.6	APP	BPTTL -20011231AAC
48	W48AV	DETROIT MI	104.8	LIC	BLTTL -19960523JB
48	WAQP	SAGINAW MI	179.5	LIC	BLCDT -20060824ADS
48	WAQP	SAGINAW MI	179.5	PLN	DTVPLN -DTVP1711
48	W50CD	BOWLING GREEN OH	65.5	APP	BPTTL -20020130ABU
48	WCET	CINCINNATI OH	293.3	LIC	BLET -19740227KG
48	WCPX-LP	COLUMBUS OH	186.9	LIC	BLTTL -20080131ADD
48	WPXI	PITTSBURGH PA	323.7	LIC	BLCDT -20050609AAQ
48	WPXI	PITTSBURGH PA	323.7	PLN	DTVPLN -DTVP1717
48	WBME-TV	RACINE WI	379.2	LIC	BMLCDT -20070823AED
48	WJJA	RACINE WI	392.6	PLN	DTVPLN -DTVP1726
49	WNWO-TV	TOLEDO OH	14.5	LIC	BLCDT -20020403AAR
49	WNWO-TV	TOLEDO OH	14.5	PLN	DTVPLN -DTVP1748
51	WLAJ	LANSING MI	118.3	LIC	BLCDT -20040422ABI
51	WLAJ	LANSING MI	118.3	PLN	DTVPLN -DTVP1798
62	WWJ-TV	DETROIT MI	93.1	LIC	BLCT -19990720LF
62	WWJ-TV	DETROIT MI	93.1	APP	BPCT -20040803ACA

Figure 3

63 WINM ANGOLA IN 108.1 LIC BLCT -19930115KE
 48 WTTV BLOOMINGTON IN 333.5 APP USERRECORD-01
 Proposal causes no interference

#####

Analysis of Interference to Affected Station 13

Analysis of current record

Channel	Call	City/State	Application Ref. No.
48	WVLR	TAZEWELL TN	BPCDT -20080328AFF

Stations Potentially Affecting This Station

Chan	Call	City/State	Dist(km)	Status	Application Ref. No.
48	WUVG-TV	ATHENS GA	280.0	LIC	BLCDT -20030805AJO
48	WUVG-TV	ATHENS GA	280.0	PLN	DTVPLN -DTVP1705
48	WTTV	BLOOMINGTON IN	414.0	PLN	DTVPLN -DTVP1707
48	WKGB-TV	BOWLING GREEN KY	283.4	LIC	BLEDT -20020304ALH
48	WKGB-TV	BOWLING GREEN KY	283.4	PLN	DTVPLN -DTVP1709
48	WACH	COLUMBIA SC	352.7	LIC	BLCDT -20021204ABB
48	WACH	COLUMBIA SC	352.7	PLN	DTVPLN -DTVP1719
49	WLFG	GRUNDY VA	152.2	CP	BPCDT -19991029AGK
49	WLFG	GRUNDY VA	152.2	PLN	DTVPLN -DTVP1754
48	WTTV	BLOOMINGTON IN	414.0	APP	USERRECORD-01

Proposal causes no interference

#####

Analysis of Interference to Affected Station 14

Analysis of current record

Channel	Call	City/State	Application Ref. No.
48	WVLR	TAZEWELL TN	DTVPLN -DTVP1720

Stations Potentially Affecting This Station

Chan	Call	City/State	Dist(km)	Status	Application Ref. No.
48	WUVG-TV	ATHENS GA	280.0	LIC	BLCDT -20030805AJO
48	WUVG-TV	ATHENS GA	280.0	PLN	DTVPLN -DTVP1705
48	WTTV	BLOOMINGTON IN	414.0	PLN	DTVPLN -DTVP1707
48	WKGB-TV	BOWLING GREEN KY	283.4	LIC	BLEDT -20020304ALH
48	WKGB-TV	BOWLING GREEN KY	283.4	PLN	DTVPLN -DTVP1709
48	WACH	COLUMBIA SC	352.7	LIC	BLCDT -20021204ABB
48	WACH	COLUMBIA SC	352.7	PLN	DTVPLN -DTVP1719
49	WLFG	GRUNDY VA	152.2	CP	BPCDT -19991029AGK
49	WLFG	GRUNDY VA	152.2	PLN	DTVPLN -DTVP1754
48	WTTV	BLOOMINGTON IN	414.0	APP	USERRECORD-01

Proposal causes no interference

#####

Figure 3

Analysis of Interference to Affected Station 15

Analysis of current record

Channel	Call	City/State	Application Ref. No.
48	WBME-TV	RACINE WI	BMLCDT -20070823AED

Stations Potentially Affecting This Station

Chan	Call	City/State	Dist(km)	Status	Application Ref. No.
47	WTTW	CHICAGO IL	109.8	LIC	BLEDT -20020408ABK
47	WTTW	CHICAGO IL	109.8	PLN	DTVPLN -DTVPL673
48	WCIA	CHAMPAIGN IL	309.7	CP MOD	BMPCDT -20050701ACC
48	WCIA	CHAMPAIGN IL	309.7	PLN	DTVPLN -DTVPL1706
48	WTTV	BLOOMINGTON IN	408.7	PLN	DTVPLN -DTVPL1707
48	WHME-TV	SOUTH BEND IN	197.0	LIC	BLCDDT -20060109ABG
48	WHME-TV	SOUTH BEND IN	197.0	PLN	DTVPLN -DTVPL1708
48	WJMN-TV	ESCANABA MI	371.4	CP	BPCDDT -19991025ACN
48	WJMN-TV	ESCANABA MI	371.4	PLN	DTVPLN -DTVPL1710
48	WAQP	SAGINAW MI	310.6	LIC	BLCDDT -20060824ADS
48	WAQP	SAGINAW MI	310.6	PLN	DTVPLN -DTVPL1711
48	WTTV	BLOOMINGTON IN	408.7	APP	USERRECORD-01

Proposed station is beyond the site to nearest cell evaluation distance

#####

Analysis of Interference to Affected Station 16

Analysis of current record

Channel	Call	City/State	Application Ref. No.
49	WDRB	LOUISVILLE KY	BPCDDT -20051130ACJ

Stations Potentially Affecting This Station

Chan	Call	City/State	Dist(km)	Status	Application Ref. No.
48	WTTV	BLOOMINGTON IN	120.3	PLN	DTVPLN -DTVPL1707
48	WKGB-TV	BOWLING GREEN KY	156.2	LIC	BLEDT -20020304ALH
48	WKGB-TV	BOWLING GREEN KY	156.2	PLN	DTVPLN -DTVPL1709
49	WAFF	HUNTSVILLE AL	409.1	LIC	BLCDDT -20021023ABD
49	WAFF	HUNTSVILLE AL	409.1	PLN	DTVPLN -DTVPL1727
49	WDKA	PADUCAH KY	291.2	PLN	DTVPLN -DTVPL1741
49	WDKA	PADUCAH KY	291.2	CP	BPCDDT -20080317AIT
49	WNWO-TV	TOLEDO OH	425.4	LIC	BLCDDT -20020403AAR
49	WNWO-TV	TOLEDO OH	425.4	PLN	DTVPLN -DTVPL1748
49	WLFG	GRUNDY VA	372.5	CP	BPCDDT -19991029AGK
49	WLFG	GRUNDY VA	372.5	PLN	DTVPLN -DTVPL1754
49	WTAP-TV	PARKERSBURG WV	387.0	LIC	BLCDDT -20040423ABG
49	WTAP-TV	PARKERSBURG WV	387.0	PLN	DTVPLN -DTVPL1757
50	WDTN	DAYTON OH	205.1	LIC	BLCDDT -20050629AAL
50	WDTN	DAYTON OH	205.1	PLN	DTVPLN -DTVPL1773
48	WTTV	BLOOMINGTON IN	120.3	APP	USERRECORD-01

Total scenarios = 4

Figure 3

Result key: 29

Scenario 1 Affected station 16
Before Analysis

Results for: 49A KY LOUISVILLE	BPCDDT	20051130ACJ	CP
HAAT 390.0 m, ATV ERP 1000.0 kW			
	POPULATION	AREA (sq km)	
within Noise Limited Contour	1787308	33324.7	
not affected by terrain losses	1773855	32485.2	
lost to NTSC IX	0	0.0	
lost to additional IX by ATV	9971	254.3	
lost to ATV IX only	9971	254.3	
lost to all IX	9971	254.3	

Potential Interfering Stations Included in above Scenario 1

49A KY PADUCAH	DTVPLN	DTVPL1741	PLN
49A VA GRUNDY	BPCDDT	19991029AGK	CP
48A IN BLOOMINGTON	DTVPLN	DTVPL1707	PLN

After Analysis

Results for: 49A KY LOUISVILLE	BPCDDT	20051130ACJ	CP
HAAT 390.0 m, ATV ERP 1000.0 kW			
	POPULATION	AREA (sq km)	
within Noise Limited Contour	1787308	33324.7	
not affected by terrain losses	1773855	32485.2	
lost to NTSC IX	0	0.0	
lost to additional IX by ATV	14570	456.1	
lost to ATV IX only	14570	456.1	
lost to all IX	14570	456.1	

Potential Interfering Stations Included in above Scenario 1

49A KY PADUCAH	DTVPLN	DTVPL1741	PLN
49A VA GRUNDY	BPCDDT	19991029AGK	CP
48A IN BLOOMINGTON	USERRECORD01		APP

Percent new IX = 0.2607%

Result key: 30

Scenario 2 Affected station 16
Before Analysis

Results for: 49A KY LOUISVILLE	BPCDDT	20051130ACJ	CP
HAAT 390.0 m, ATV ERP 1000.0 kW			
	POPULATION	AREA (sq km)	
within Noise Limited Contour	1787308	33324.7	
not affected by terrain losses	1773855	32485.2	
lost to NTSC IX	0	0.0	
lost to additional IX by ATV	9971	254.3	
lost to ATV IX only	9971	254.3	
lost to all IX	9971	254.3	

Potential Interfering Stations Included in above Scenario 2

Figure 3

49A KY PADUCAH	DTVPLN	DTVP1741	PLN
49A VA GRUNDY	DTVPLN	DTVP1754	PLN
48A IN BLOOMINGTON	DTVPLN	DTVP1707	PLN

After Analysis

Results for: 49A KY LOUISVILLE BPCDT 20051130ACJ CP

HAAT 390.0 m, ATV ERP 1000.0 kW

	POPULATION	AREA (sq km)
within Noise Limited Contour	1787308	33324.7
not affected by terrain losses	1773855	32485.2
lost to NTSC IX	0	0.0
lost to additional IX by ATV	14570	456.1
lost to ATV IX only	14570	456.1
lost to all IX	14570	456.1

Potential Interfering Stations Included in above Scenario 2

49A KY PADUCAH	DTVPLN	DTVP1741	PLN
49A VA GRUNDY	DTVPLN	DTVP1754	PLN
48A IN BLOOMINGTON	USERRECORD01		APP

Percent new IX = 0.2607%

Result key: 31

Scenario 3 Affected station 16

Before Analysis

Results for: 49A KY LOUISVILLE BPCDT 20051130ACJ CP

HAAT 390.0 m, ATV ERP 1000.0 kW

	POPULATION	AREA (sq km)
within Noise Limited Contour	1787308	33324.7
not affected by terrain losses	1773855	32485.2
lost to NTSC IX	0	0.0
lost to additional IX by ATV	9971	254.3
lost to ATV IX only	9971	254.3
lost to all IX	9971	254.3

Potential Interfering Stations Included in above Scenario 3

49A KY PADUCAH	BPCDT	20080317AIT	CP
49A VA GRUNDY	BPCDT	19991029AGK	CP
48A IN BLOOMINGTON	DTVPLN	DTVP1707	PLN

After Analysis

Results for: 49A KY LOUISVILLE BPCDT 20051130ACJ CP

HAAT 390.0 m, ATV ERP 1000.0 kW

	POPULATION	AREA (sq km)
within Noise Limited Contour	1787308	33324.7
not affected by terrain losses	1773855	32485.2
lost to NTSC IX	0	0.0
lost to additional IX by ATV	14570	456.1
lost to ATV IX only	14570	456.1
lost to all IX	14570	456.1

Figure 3

Potential Interfering Stations Included in above Scenario 3

49A KY PADUCAH	BPCDT	20080317AIT	CP
49A VA GRUNDY	BPCDT	19991029AGK	CP
48A IN BLOOMINGTON	USERRECORD01		APP

Percent new IX = 0.2607%

Result key: 32

Scenario 4 Affected station 16

Before Analysis

Results for: 49A KY LOUISVILLE BPCDT 20051130ACJ CP

HAAT 390.0 m, ATV ERP 1000.0 kW

	POPULATION	AREA (sq km)
within Noise Limited Contour	1787308	33324.7
not affected by terrain losses	1773855	32485.2
lost to NTSC IX	0	0.0
lost to additional IX by ATV	9971	254.3
lost to ATV IX only	9971	254.3
lost to all IX	9971	254.3

Potential Interfering Stations Included in above Scenario 4

49A KY PADUCAH	BPCDT	20080317AIT	CP
49A VA GRUNDY	DTVPLN	DTVP1754	PLN
48A IN BLOOMINGTON	DTVPLN	DTVP1707	PLN

After Analysis

Results for: 49A KY LOUISVILLE BPCDT 20051130ACJ CP

HAAT 390.0 m, ATV ERP 1000.0 kW

	POPULATION	AREA (sq km)
within Noise Limited Contour	1787308	33324.7
not affected by terrain losses	1773855	32485.2
lost to NTSC IX	0	0.0
lost to additional IX by ATV	14570	456.1
lost to ATV IX only	14570	456.1
lost to all IX	14570	456.1

Potential Interfering Stations Included in above Scenario 4

49A KY PADUCAH	BPCDT	20080317AIT	CP
49A VA GRUNDY	DTVPLN	DTVP1754	PLN
48A IN BLOOMINGTON	USERRECORD01		APP

Percent new IX = 0.2607%

Worst case new IX 0.2607% Scenario 1

#####

Analysis of Interference to Affected Station 17

Analysis of current record

Figure 3

Channel	Call	City/State	Application Ref. No.	
49	WDRB	LOUISVILLE KY	DTVPLN	-DTVPl740

Stations Potentially Affecting This Station				
Chan	Call	City/State	Dist(km)	Status Application Ref. No.
48	WTTV	BLOOMINGTON IN	120.3	PLN DTVPLN -DTVPl707
48	WKGB-TV	BOWLING GREEN KY	156.2	LIC BLEDT -20020304ALH
48	WKGB-TV	BOWLING GREEN KY	156.2	PLN DTVPLN -DTVPl709
49	WAFF	HUNTSVILLE AL	409.1	LIC BLCDDT -20021023ABD
49	WAFF	HUNTSVILLE AL	409.1	PLN DTVPLN -DTVPl727
49	WDKA	PADUCAH KY	291.2	PLN DTVPLN -DTVPl741
49	WDKA	PADUCAH KY	291.2	CP BPCDDT -20080317AIT
49	WNWO-TV	TOLEDO OH	425.4	LIC BLCDDT -20020403AAR
49	WNWO-TV	TOLEDO OH	425.4	PLN DTVPLN -DTVPl748
49	WLFG	GRUNDY VA	372.5	CP BPCDDT -19991029AGK
49	WLFG	GRUNDY VA	372.5	PLN DTVPLN -DTVPl754
49	WTAP-TV	PARKERSBURG WV	387.0	LIC BLCDDT -20040423ABG
49	WTAP-TV	PARKERSBURG WV	387.0	PLN DTVPLN -DTVPl757
50	WDTN	DAYTON OH	205.1	LIC BLCDDT -20050629AAL
50	WDTN	DAYTON OH	205.1	PLN DTVPLN -DTVPl773
48	WTTV	BLOOMINGTON IN	120.3	APP USERRECORD-01

Total scenarios = 4

Result key: 33
 Scenario 1 Affected station 17
 Before Analysis

Results for: 49A KY LOUISVILLE DTVPLN DTVPl740 PLN
 HAAT 390.0 m, ATV ERP 1000.0 kW

	POPULATION	AREA (sq km)
within Noise Limited Contour	1787308	33324.7
not affected by terrain losses	1773855	32485.2
lost to NTSC IX	0	0.0
lost to additional IX by ATV	9971	254.3
lost to ATV IX only	9971	254.3
lost to all IX	9971	254.3

Potential Interfering Stations Included in above Scenario 1

49A KY PADUCAH	DTVPLN	DTVPl741	PLN
49A VA GRUNDY	BPCDDT	19991029AGK	CP
48A IN BLOOMINGTON	DTVPLN	DTVPl707	PLN

After Analysis

Results for: 49A KY LOUISVILLE DTVPLN DTVPl740 PLN
 HAAT 390.0 m, ATV ERP 1000.0 kW

	POPULATION	AREA (sq km)
within Noise Limited Contour	1787308	33324.7
not affected by terrain losses	1773855	32485.2
lost to NTSC IX	0	0.0
lost to additional IX by ATV	14570	456.1
lost to ATV IX only	14570	456.1
lost to all IX	14570	456.1

Figure 3

Potential Interfering Stations Included in above Scenario 1

49A KY PADUCAH	DTVPLN	DTVPl741	PLN
49A VA GRUNDY	BPCDDT	19991029AGK	CP
48A IN BLOOMINGTON	USERRECORD01		APP

Percent new IX = 0.2607%

Result key: 34
 Scenario 2 Affected station 17
 Before Analysis

Results for: 49A KY LOUISVILLE DTVPLN DTVPl740 PLN
 HAAT 390.0 m, ATV ERP 1000.0 kW

	POPULATION	AREA (sq km)
within Noise Limited Contour	1787308	33324.7
not affected by terrain losses	1773855	32485.2
lost to NTSC IX	0	0.0
lost to additional IX by ATV	9971	254.3
lost to ATV IX only	9971	254.3
lost to all IX	9971	254.3

Potential Interfering Stations Included in above Scenario 2

49A KY PADUCAH	DTVPLN	DTVPl741	PLN
49A VA GRUNDY	DTVPLN	DTVPl754	PLN
48A IN BLOOMINGTON	DTVPLN	DTVPl707	PLN

After Analysis

Results for: 49A KY LOUISVILLE DTVPLN DTVPl740 PLN
 HAAT 390.0 m, ATV ERP 1000.0 kW

	POPULATION	AREA (sq km)
within Noise Limited Contour	1787308	33324.7
not affected by terrain losses	1773855	32485.2
lost to NTSC IX	0	0.0
lost to additional IX by ATV	14570	456.1
lost to ATV IX only	14570	456.1
lost to all IX	14570	456.1

Potential Interfering Stations Included in above Scenario 2

49A KY PADUCAH	DTVPLN	DTVPl741	PLN
49A VA GRUNDY	DTVPLN	DTVPl754	PLN
48A IN BLOOMINGTON	USERRECORD01		APP

Percent new IX = 0.2607%

Result key: 35
 Scenario 3 Affected station 17
 Before Analysis

Results for: 49A KY LOUISVILLE DTVPLN DTVPl740 PLN
 HAAT 390.0 m, ATV ERP 1000.0 kW

	POPULATION	AREA (sq km)
within Noise Limited Contour	1787308	33324.7

Figure 3

not affected by terrain losses	1773855	32485.2	
lost to NTSC IX	0	0.0	
lost to additional IX by ATV	9971	254.3	
lost to ATV IX only	9971	254.3	
lost to all IX	9971	254.3	

Potential Interfering Stations Included in above Scenario 3

49A KY PADUCAH	BPCDT	20080317AIT	CP
49A VA GRUNDY	BPCDT	19991029AGK	CP
48A IN BLOOMINGTON	DTVPLN	DTVP1707	PLN

After Analysis

Results for: 49A KY LOUISVILLE DTVPLN DTVP1740 PLN

HAAT 390.0 m, ATV ERP 1000.0 kW

	POPULATION	AREA (sq km)
within Noise Limited Contour	1787308	33324.7
not affected by terrain losses	1773855	32485.2
lost to NTSC IX	0	0.0
lost to additional IX by ATV	14570	456.1
lost to ATV IX only	14570	456.1
lost to all IX	14570	456.1

Potential Interfering Stations Included in above Scenario 3

49A KY PADUCAH	BPCDT	20080317AIT	CP
49A VA GRUNDY	BPCDT	19991029AGK	CP
48A IN BLOOMINGTON	USERRECORD01		APP

Percent new IX = 0.2607%

Result key: 36

Scenario 4 Affected station 17

Before Analysis

Results for: 49A KY LOUISVILLE DTVPLN DTVP1740 PLN

HAAT 390.0 m, ATV ERP 1000.0 kW

	POPULATION	AREA (sq km)
within Noise Limited Contour	1787308	33324.7
not affected by terrain losses	1773855	32485.2
lost to NTSC IX	0	0.0
lost to additional IX by ATV	9971	254.3
lost to ATV IX only	9971	254.3
lost to all IX	9971	254.3

Potential Interfering Stations Included in above Scenario 4

49A KY PADUCAH	BPCDT	20080317AIT	CP
49A VA GRUNDY	DTVPLN	DTVP1754	PLN
48A IN BLOOMINGTON	DTVPLN	DTVP1707	PLN

After Analysis

Results for: 49A KY LOUISVILLE DTVPLN DTVP1740 PLN

HAAT 390.0 m, ATV ERP 1000.0 kW

	POPULATION	AREA (sq km)
--	------------	--------------

Figure 3

within Noise Limited Contour	1787308	33324.7
not affected by terrain losses	1773855	32485.2
lost to NTSC IX	0	0.0
lost to additional IX by ATV	14570	456.1
lost to ATV IX only	14570	456.1
lost to all IX	14570	456.1

Potential Interfering Stations Included in above Scenario 4

49A KY PADUCAH	BPCDT	20080317AIT	CP
49A VA GRUNDY	DTVPLN	DTVP1754	PLN
48A IN BLOOMINGTON	USERRECORD01		APP

Percent new IX = 0.2607%

Worst case new IX 0.2607% Scenario 1

#####

Analysis of Interference to Affected Station 18

Analysis of current record

Channel	Call	City/State	Application Ref. No.
50	WALV-CA	INDIANAPOLIS IN	BLTTA -20020621AAJ

Stations Potentially Affecting This Station

Chan	Call	City/State	Dist(km)	Status	Application Ref. No.
42	WCLJ-TV	BLOOMINGTON IN	58.5	PLN	DTVPLN -DTVP1501
42	WCLJ-TV	BLOOMINGTON IN	58.5	CP	BPCDT -20080314ABE
43	WKOI-TV	RICHMOND IN	140.0	LIC	BLCT -19820517KJ
48	WTTV	BLOOMINGTON IN	58.0	CP	BPCDT -20060707AFA
48	WTTV	BLOOMINGTON IN	58.0	PLN	DTVPLN -DTVP1707
48	WTTV	BLOOMINGTON IN	58.0	LIC	BLCDT -20060630ACD
49	WIPB	MUNCIE IN	73.1	LIC	BLET -19810717KI
50	WXFT-TV	AURORA IL	248.8	CP	BPCDT -20080425ABK
50	WXFT-TV	AURORA IL	248.8	PLN	DTVPLN -DTVP1765
50	WEIU-TV	CHARLESTON IL	185.9	CP MOD	BMPEDT -20050510ACW
50	WEIU-TV	CHARLESTON IL	185.9	PLN	DTVPLN -DTVP1766
50	WEIU-TV	CHARLESTON IL	185.9	LIC	BLEDT -20060504AAW
50	WPWR-TV	GARY IN	248.8	LIC	BLCT -19870128KL
50	WKGK-LP	KOKOMO IN	56.3	LIC	BLTTA -20041122AIH
50	960723KX	ASHLAND KY	297.9	APP	BPCT -19960723KX
50	W50CI	LOUISVILLE KY	176.2	CP	BPTTL -20050105ABN
50	WKBD	DETROIT MI	371.8	LIC	BLCT -2092
50	WDTN	DAYTON OH	166.0	LIC	BLCDT -20050629AAL
50	WDTN	DAYTON OH	166.0	PLN	DTVPLN -DTVP1773
50	WPGD-TV	HENDERSONVILLE TN	385.6	LIC	BLCT -19921015KG
51	WIPX-LP	INDIANAPOLIS IN	17.8	LIC	BLTTL -19970918JR
65	WDNI-LP	INDIANAPOLIS IN	11.8	LIC	BLTTL -20011106AAF
48	WTTV	BLOOMINGTON IN	58.0	APP	USERRECORD-01

Proposal causes no interference

#####

Figure 3

Analysis of Interference to Affected Station 19

Analysis of current record

Channel	Call	City/State	Application Ref. No.
50	WKGK-LP	KOKOMO IN	BLTTA -20041122AIH

Stations Potentially Affecting This Station

Chan	Call	City/State	Dist(km)	Status	Application Ref. No.
42	WCLJ-TV	BLOOMINGTON IN	114.4	PLN	DTVPLN -DTV1501
42	WCLJ-TV	BLOOMINGTON IN	114.4	CP	BPCDT -20080314ABE
42	WNDU-TV	SOUTH BEND IN	130.7	LIC	BLCDT -20060717AAG
42	WNDU-TV	SOUTH BEND IN	130.7	PLN	DTVPLN -DTV1502
48	WTTV	BLOOMINGTON IN	113.9	CP	BPCDT -20060707AFA
48	WTTV	BLOOMINGTON IN	113.9	PLN	DTVPLN -DTV1707
48	WTTV	BLOOMINGTON IN	113.9	LIC	BLCDT -20060630ACD
48	WHME-TV	SOUTH BEND IN	129.4	LIC	BLCDT -20060109ABG
48	WHME-TV	SOUTH BEND IN	129.4	PLN	DTVPLN -DTV1708
49	WIPB	MUNCIE IN	69.0	LIC	BLET -19810717KI
50	WXFT-TV	AURORA IL	205.3	CP	BPCDT -20080425ABK
50	WXFT-TV	AURORA IL	205.3	PLN	DTVPLN -DTV1765
50	WEIU-TV	CHARLESTON IL	210.1	CP MOD	BMPEDT -20050510ACW
50	WEIU-TV	CHARLESTON IL	210.1	PLN	DTVPLN -DTV1766
50	WEIU-TV	CHARLESTON IL	210.1	LIC	BLEDT -20060504AAW
50	WPWR-TV	GARY IN	205.3	LIC	BLCT -19870128KL
50	WALV-CA	INDIANAPOLIS IN	56.3	LIC	BLTTA -20020621AAJ
50	960723KX	ASHLAND KY	320.4	APP	BPCDT -19960723KX
50	WKBD	DETROIT MI	326.0	LIC	BLCT -2092
50	WEAO	AKRON OH	383.7	LIC	BLEDT -20040928AQT
50	WEAO	AKRON OH	383.7	PLN	DTVPLN -DTV1772
50	WDTN	DAYTON OH	176.5	LIC	BLCDT -20050629AAL
50	WDTN	DAYTON OH	176.5	PLN	DTVPLN -DTV1773
48	WTTV	BLOOMINGTON IN	113.9	APP	USERRECORD-01

Proposed station is beyond the site to
nearest cell evaluation distance

#####

Analysis of Interference to Affected Station 20

Analysis of current record

Channel	Call	City/State	Application Ref. No.
51	WIWU-CA	MARION IN	BLTTA -20080422AAS

Stations Potentially Affecting This Station

Chan	Call	City/State	Dist(km)	Status	Application Ref. No.
44	WDTI	INDIANAPOLIS IN	93.1	CP MOD	BMPEDT -20070523ACG
44	WDTI	INDIANAPOLIS IN	93.5	PLN	DTVPLN -DTV1574
44	WTLW	LIMA OH	124.4	CP	BPCDT -20080402AAC
44	WTLW	LIMA OH	124.4	PLN	DTVPLN -DTV1591
44	WTLW	LIMA OH	124.4	LIC	BMLCT -20010123ABE

Figure 3

48	WTTV	BLOOMINGTON IN	140.9	CP	BPCDT -20060707AFA
48	WTTV	BLOOMINGTON IN	140.9	PLN	DTVPLN -DTV1707
48	WTTV	BLOOMINGTON IN	140.9	LIC	BLCDT -20060630ACD
48	WHME-TV	SOUTH BEND IN	117.1	LIC	BLCDT -20060109ABG
48	WHME-TV	SOUTH BEND IN	117.1	PLN	DTVPLN -DTV1708
51	WEIU-TV	CHARLESTON IL	247.1	CP	BPET -20030212ABF
51	WPWR-TV	GARY IN	217.6	LIC	BLCDT -20050425ACE
51	WPWR-TV	GARY IN	217.6	PLN	DTVPLN -DTV1795
51	WIPX-LP	INDIANAPOLIS IN	103.5	LIC	BLTTL -19970918JR
51	W51DU	LAFAYETTE IN	106.0	LIC	BLTT -20061005ADX
51	WMYO	SALEM IN	252.4	CP MOD	BMPEDT -20080320AAR
51	WMYO	SALEM IN	252.4	PLN	DTVPLN -DTV1796
51	WLAJ	LANSING MI	221.3	LIC	BLCDT -20040422ABI
51	WLAJ	LANSING MI	221.3	PLN	DTVPLN -DTV1798
51	WKEF	DAYTON OH	154.2	LIC	BLCDT -20050620AAP
51	WKEF	DAYTON OH	154.2	PLN	DTVPLN -DTV1806
51	WSFJ-TV	NEWARK OH	257.0	LIC	BLCT -20050623ABJ
48	WTTV	BLOOMINGTON IN	140.9	APP	USERRECORD-01

Proposed station is beyond the site to
nearest cell evaluation distance

#####

Analysis of Interference to Affected Station 21

Analysis of current record

Channel	Call	City/State	Application Ref. No.
48	WTTV	BLOOMINGTON IN	USERRECORD-01

Stations Potentially Affecting This Station

Chan	Call	City/State	Dist(km)	Status	Application Ref. No.
47	WAVE	LOUISVILLE KY	118.7	LIC	BLCDT -20030306ABQ
47	WAVE	LOUISVILLE KY	118.7	PLN	DTVPLN -DTV1675
48	WCIA	CHAMPAIGN IL	211.5	CP MOD	BMPEDT -20050701ACC
48	WCIA	CHAMPAIGN IL	211.5	PLN	DTVPLN -DTV1706
48	WHME-TV	SOUTH BEND IN	243.2	LIC	BLCDT -20060109ABG
48	WHME-TV	SOUTH BEND IN	243.2	PLN	DTVPLN -DTV1708
48	WKGB-TV	BOWLING GREEN KY	261.1	LIC	BLEDT -20020304ALH
48	WKGB-TV	BOWLING GREEN KY	261.1	PLN	DTVPLN -DTV1709
48	WVLR	TAZEWELL TN	414.0	CP	BPCDT -20080328AFF
48	WVLR	TAZEWELL TN	414.0	PLN	DTVPLN -DTV1720
48	WBME-TV	RACINE WI	408.7	LIC	BMLCDT -20070823AED
49	WDRB	LOUISVILLE KY	120.3	CP	BPCDT -20051130ACJ
49	WDRB	LOUISVILLE KY	120.3	PLN	DTVPLN -DTV1740

Total scenarios = 32

Result key: 37
Scenario 1 Affected station 21
Before Analysis

Results for: 48A IN BLOOMINGTON USERRECORD01 APP

Figure 3

HAAT 354.0 m, ATV ERP 1000.0 kW

	POPULATION	AREA (sq km)
within Noise Limited Contour	2365096	31662.5
not affected by terrain losses	2354797	31292.5
lost to NTSC IX	0	0.0
lost to additional IX by ATV	53172	1592.4
lost to ATV IX only	53172	1592.4
lost to all IX	53172	1592.4

Potential Interfering Stations Included in above Scenario 1

47A KY LOUISVILLE	BLCDDT	20030306ABQ	LIC
48A IL CHAMPAIGN	BMPCDDT	20050701ACC	CP
48A IN SOUTH BEND	BLCDDT	20060109ABG	LIC
48A KY BOWLING GREEN	BLEDDT	20020304ALH	LIC
49A KY LOUISVILLE	BPCDDT	20051130ACJ	CP

Result key: 38
Scenario 2 Affected station 21
Before Analysis

Results for: 48A IN BLOOMINGTON USERRECORD01 APP

HAAT 354.0 m, ATV ERP 1000.0 kW

	POPULATION	AREA (sq km)
within Noise Limited Contour	2365096	31662.5
not affected by terrain losses	2354797	31292.5
lost to NTSC IX	0	0.0
lost to additional IX by ATV	53172	1592.4
lost to ATV IX only	53172	1592.4
lost to all IX	53172	1592.4

Potential Interfering Stations Included in above Scenario 2

47A KY LOUISVILLE	BLCDDT	20030306ABQ	LIC
48A IL CHAMPAIGN	BMPCDDT	20050701ACC	CP
48A IN SOUTH BEND	BLCDDT	20060109ABG	LIC
48A KY BOWLING GREEN	BLEDDT	20020304ALH	LIC
49A KY LOUISVILLE	DTVPLN	DTVP1740	PLN

Result key: 39
Scenario 3 Affected station 21
Before Analysis

Results for: 48A IN BLOOMINGTON USERRECORD01 APP

HAAT 354.0 m, ATV ERP 1000.0 kW

	POPULATION	AREA (sq km)
within Noise Limited Contour	2365096	31662.5
not affected by terrain losses	2354797	31292.5
lost to NTSC IX	0	0.0
lost to additional IX by ATV	53172	1592.4
lost to ATV IX only	53172	1592.4
lost to all IX	53172	1592.4

Potential Interfering Stations Included in above Scenario 3

47A KY LOUISVILLE	BLCDDT	20030306ABQ	LIC
48A IL CHAMPAIGN	BMPCDDT	20050701ACC	CP

Figure 3

48A IN SOUTH BEND	BLCDDT	20060109ABG	LIC
48A KY BOWLING GREEN	DTVPLN	DTVP1709	PLN
49A KY LOUISVILLE	BPCDDT	20051130ACJ	CP

Result key: 40
Scenario 4 Affected station 21
Before Analysis

Results for: 48A IN BLOOMINGTON USERRECORD01 APP

HAAT 354.0 m, ATV ERP 1000.0 kW

	POPULATION	AREA (sq km)
within Noise Limited Contour	2365096	31662.5
not affected by terrain losses	2354797	31292.5
lost to NTSC IX	0	0.0
lost to additional IX by ATV	53172	1592.4
lost to ATV IX only	53172	1592.4
lost to all IX	53172	1592.4

Potential Interfering Stations Included in above Scenario 4

47A KY LOUISVILLE	BLCDDT	20030306ABQ	LIC
48A IL CHAMPAIGN	BMPCDDT	20050701ACC	CP
48A IN SOUTH BEND	BLCDDT	20060109ABG	LIC
48A KY BOWLING GREEN	DTVPLN	DTVP1709	PLN
49A KY LOUISVILLE	DTVPLN	DTVP1740	PLN

Result key: 41
Scenario 5 Affected station 21
Before Analysis

Results for: 48A IN BLOOMINGTON USERRECORD01 APP

HAAT 354.0 m, ATV ERP 1000.0 kW

	POPULATION	AREA (sq km)
within Noise Limited Contour	2365096	31662.5
not affected by terrain losses	2354797	31292.5
lost to NTSC IX	0	0.0
lost to additional IX by ATV	53172	1592.4
lost to ATV IX only	53172	1592.4
lost to all IX	53172	1592.4

Potential Interfering Stations Included in above Scenario 5

47A KY LOUISVILLE	BLCDDT	20030306ABQ	LIC
48A IL CHAMPAIGN	BMPCDDT	20050701ACC	CP
48A IN SOUTH BEND	DTVPLN	DTVP1708	PLN
48A KY BOWLING GREEN	BLEDDT	20020304ALH	LIC
49A KY LOUISVILLE	BPCDDT	20051130ACJ	CP

Result key: 42
Scenario 6 Affected station 21
Before Analysis

Results for: 48A IN BLOOMINGTON USERRECORD01 APP

HAAT 354.0 m, ATV ERP 1000.0 kW

	POPULATION	AREA (sq km)
within Noise Limited Contour	2365096	31662.5
not affected by terrain losses	2354797	31292.5

Figure 3

lost to NTSC IX	0	0.0
lost to additional IX by ATV	53172	1592.4
lost to ATV IX only	53172	1592.4
lost to all IX	53172	1592.4
Potential Interfering Stations Included in above Scenario	6	
47A KY LOUISVILLE	BLCDDT	20030306ABQ LIC
48A IL CHAMPAIGN	BMPCDDT	20050701ACC CP
48A IN SOUTH BEND	DTVPLN	DTVP1708 PLN
48A KY BOWLING GREEN	BLEDT	20020304ALH LIC
49A KY LOUISVILLE	DTVPLN	DTVP1740 PLN
Result key:	43	
Scenario	7 Affected station	21
Before Analysis		
Results for: 48A IN BLOOMINGTON	USERRECORD01	APP
HAAT 354.0 m, ATV ERP 1000.0 kW		
	POPULATION	AREA (sq km)
within Noise Limited Contour	2365096	31662.5
not affected by terrain losses	2354797	31292.5
lost to NTSC IX	0	0.0
lost to additional IX by ATV	53172	1592.4
lost to ATV IX only	53172	1592.4
lost to all IX	53172	1592.4
Potential Interfering Stations Included in above Scenario	7	
47A KY LOUISVILLE	BLCDDT	20030306ABQ LIC
48A IL CHAMPAIGN	BMPCDDT	20050701ACC CP
48A IN SOUTH BEND	DTVPLN	DTVP1708 PLN
48A KY BOWLING GREEN	DTVPLN	DTVP1709 PLN
49A KY LOUISVILLE	BPCDDT	20051130ACJ CP
Result key:	44	
Scenario	8 Affected station	21
Before Analysis		
Results for: 48A IN BLOOMINGTON	USERRECORD01	APP
HAAT 354.0 m, ATV ERP 1000.0 kW		
	POPULATION	AREA (sq km)
within Noise Limited Contour	2365096	31662.5
not affected by terrain losses	2354797	31292.5
lost to NTSC IX	0	0.0
lost to additional IX by ATV	53172	1592.4
lost to ATV IX only	53172	1592.4
lost to all IX	53172	1592.4
Potential Interfering Stations Included in above Scenario	8	
47A KY LOUISVILLE	BLCDDT	20030306ABQ LIC
48A IL CHAMPAIGN	BMPCDDT	20050701ACC CP
48A IN SOUTH BEND	DTVPLN	DTVP1708 PLN
48A KY BOWLING GREEN	DTVPLN	DTVP1709 PLN
49A KY LOUISVILLE	DTVPLN	DTVP1740 PLN

Figure 3

Result key:	45	
Scenario	9 Affected station	21
Before Analysis		
Results for: 48A IN BLOOMINGTON	USERRECORD01	APP
HAAT 354.0 m, ATV ERP 1000.0 kW		
	POPULATION	AREA (sq km)
within Noise Limited Contour	2365096	31662.5
not affected by terrain losses	2354797	31292.5
lost to NTSC IX	0	0.0
lost to additional IX by ATV	53172	1592.4
lost to ATV IX only	53172	1592.4
lost to all IX	53172	1592.4
Potential Interfering Stations Included in above Scenario	9	
47A KY LOUISVILLE	BLCDDT	20030306ABQ LIC
48A IL CHAMPAIGN	DTVPLN	DTVP1706 PLN
48A IN SOUTH BEND	BLCDDT	20060109ABG LIC
48A KY BOWLING GREEN	BLEDT	20020304ALH LIC
49A KY LOUISVILLE	BPCDDT	20051130ACJ CP
Result key:	46	
Scenario	10 Affected station	21
Before Analysis		
Results for: 48A IN BLOOMINGTON	USERRECORD01	APP
HAAT 354.0 m, ATV ERP 1000.0 kW		
	POPULATION	AREA (sq km)
within Noise Limited Contour	2365096	31662.5
not affected by terrain losses	2354797	31292.5
lost to NTSC IX	0	0.0
lost to additional IX by ATV	53172	1592.4
lost to ATV IX only	53172	1592.4
lost to all IX	53172	1592.4
Potential Interfering Stations Included in above Scenario	10	
47A KY LOUISVILLE	BLCDDT	20030306ABQ LIC
48A IL CHAMPAIGN	DTVPLN	DTVP1706 PLN
48A IN SOUTH BEND	BLCDDT	20060109ABG LIC
48A KY BOWLING GREEN	BLEDT	20020304ALH LIC
49A KY LOUISVILLE	DTVPLN	DTVP1740 PLN
Result key:	47	
Scenario	11 Affected station	21
Before Analysis		
Results for: 48A IN BLOOMINGTON	USERRECORD01	APP
HAAT 354.0 m, ATV ERP 1000.0 kW		
	POPULATION	AREA (sq km)
within Noise Limited Contour	2365096	31662.5
not affected by terrain losses	2354797	31292.5
lost to NTSC IX	0	0.0
lost to additional IX by ATV	53172	1592.4
lost to ATV IX only	53172	1592.4
lost to all IX	53172	1592.4

Figure 3

Potential Interfering Stations Included in above Scenario 11

47A KY LOUISVILLE	BLCDDT	20030306ABQ	LIC
48A IL CHAMPAIGN	DTVPLN	DTVP1706	PLN
48A IN SOUTH BEND	BLCDDT	20060109ABG	LIC
48A KY BOWLING GREEN	DTVPLN	DTVP1709	PLN
49A KY LOUISVILLE	BPCDDT	20051130ACJ	CP

Result key: 48
Scenario 12 Affected station 21
Before Analysis

Results for: 48A IN BLOOMINGTON USERRECORD01 APP

HAAT 354.0 m, ATV ERP 1000.0 kW

	POPULATION	AREA (sq km)
within Noise Limited Contour	2365096	31662.5
not affected by terrain losses	2354797	31292.5
lost to NTSC IX	0	0.0
lost to additional IX by ATV	53172	1592.4
lost to ATV IX only	53172	1592.4
lost to all IX	53172	1592.4

Potential Interfering Stations Included in above Scenario 12

47A KY LOUISVILLE	BLCDDT	20030306ABQ	LIC
48A IL CHAMPAIGN	DTVPLN	DTVP1706	PLN
48A IN SOUTH BEND	BLCDDT	20060109ABG	LIC
48A KY BOWLING GREEN	DTVPLN	DTVP1709	PLN
49A KY LOUISVILLE	DTVPLN	DTVP1740	PLN

Result key: 49
Scenario 13 Affected station 21
Before Analysis

Results for: 48A IN BLOOMINGTON USERRECORD01 APP

HAAT 354.0 m, ATV ERP 1000.0 kW

	POPULATION	AREA (sq km)
within Noise Limited Contour	2365096	31662.5
not affected by terrain losses	2354797	31292.5
lost to NTSC IX	0	0.0
lost to additional IX by ATV	53172	1592.4
lost to ATV IX only	53172	1592.4
lost to all IX	53172	1592.4

Potential Interfering Stations Included in above Scenario 13

47A KY LOUISVILLE	BLCDDT	20030306ABQ	LIC
48A IL CHAMPAIGN	DTVPLN	DTVP1706	PLN
48A IN SOUTH BEND	DTVPLN	DTVP1708	PLN
48A KY BOWLING GREEN	BLEDDT	20020304ALH	LIC
49A KY LOUISVILLE	BPCDDT	20051130ACJ	CP

Result key: 50
Scenario 14 Affected station 21
Before Analysis

Figure 3

Results for: 48A IN BLOOMINGTON USERRECORD01 APP

HAAT 354.0 m, ATV ERP 1000.0 kW

	POPULATION	AREA (sq km)
within Noise Limited Contour	2365096	31662.5
not affected by terrain losses	2354797	31292.5
lost to NTSC IX	0	0.0
lost to additional IX by ATV	53172	1592.4
lost to ATV IX only	53172	1592.4
lost to all IX	53172	1592.4

Potential Interfering Stations Included in above Scenario 14

47A KY LOUISVILLE	BLCDDT	20030306ABQ	LIC
48A IL CHAMPAIGN	DTVPLN	DTVP1706	PLN
48A IN SOUTH BEND	DTVPLN	DTVP1708	PLN
48A KY BOWLING GREEN	BLEDDT	20020304ALH	LIC
49A KY LOUISVILLE	DTVPLN	DTVP1740	PLN

Result key: 51
Scenario 15 Affected station 21
Before Analysis

Results for: 48A IN BLOOMINGTON USERRECORD01 APP

HAAT 354.0 m, ATV ERP 1000.0 kW

	POPULATION	AREA (sq km)
within Noise Limited Contour	2365096	31662.5
not affected by terrain losses	2354797	31292.5
lost to NTSC IX	0	0.0
lost to additional IX by ATV	53172	1592.4
lost to ATV IX only	53172	1592.4
lost to all IX	53172	1592.4

Potential Interfering Stations Included in above Scenario 15

47A KY LOUISVILLE	BLCDDT	20030306ABQ	LIC
48A IL CHAMPAIGN	DTVPLN	DTVP1706	PLN
48A IN SOUTH BEND	DTVPLN	DTVP1708	PLN
48A KY BOWLING GREEN	DTVPLN	DTVP1709	PLN
49A KY LOUISVILLE	BPCDDT	20051130ACJ	CP

Result key: 52
Scenario 16 Affected station 21
Before Analysis

Results for: 48A IN BLOOMINGTON USERRECORD01 APP

HAAT 354.0 m, ATV ERP 1000.0 kW

	POPULATION	AREA (sq km)
within Noise Limited Contour	2365096	31662.5
not affected by terrain losses	2354797	31292.5
lost to NTSC IX	0	0.0
lost to additional IX by ATV	53172	1592.4
lost to ATV IX only	53172	1592.4
lost to all IX	53172	1592.4

Potential Interfering Stations Included in above Scenario 16

47A KY LOUISVILLE	BLCDDT	20030306ABQ	LIC
-------------------	--------	-------------	-----

Figure 3

48A IL CHAMPAIGN	DTVPLN	DTVP1706	PLN
48A IN SOUTH BEND	DTVPLN	DTVP1708	PLN
48A KY BOWLING GREEN	DTVPLN	DTVP1709	PLN
49A KY LOUISVILLE	DTVPLN	DTVP1740	PLN

Result key: 53
 Scenario 17 Affected station 21
 Before Analysis

Results for: 48A IN BLOOMINGTON	USERRECORD01	APP
HAAT 354.0 m, ATV ERP 1000.0 kW		
	POPULATION	AREA (sq km)
within Noise Limited Contour	2365096	31662.5
not affected by terrain losses	2354797	31292.5
lost to NTSC IX	0	0.0
lost to additional IX by ATV	53172	1592.4
lost to ATV IX only	53172	1592.4
lost to all IX	53172	1592.4

Potential Interfering Stations Included in above Scenario 17

47A KY LOUISVILLE	DTVPLN	DTVP1675	PLN
48A IL CHAMPAIGN	BMPCDT	20050701ACC	CP
48A IN SOUTH BEND	BLCDT	20060109ABG	LIC
48A KY BOWLING GREEN	BLEDT	20020304ALH	LIC
49A KY LOUISVILLE	BPCDT	20051130ACJ	CP

Result key: 54
 Scenario 18 Affected station 21
 Before Analysis

Results for: 48A IN BLOOMINGTON	USERRECORD01	APP
HAAT 354.0 m, ATV ERP 1000.0 kW		
	POPULATION	AREA (sq km)
within Noise Limited Contour	2365096	31662.5
not affected by terrain losses	2354797	31292.5
lost to NTSC IX	0	0.0
lost to additional IX by ATV	53172	1592.4
lost to ATV IX only	53172	1592.4
lost to all IX	53172	1592.4

Potential Interfering Stations Included in above Scenario 18

47A KY LOUISVILLE	DTVPLN	DTVP1675	PLN
48A IL CHAMPAIGN	BMPCDT	20050701ACC	CP
48A IN SOUTH BEND	BLCDT	20060109ABG	LIC
48A KY BOWLING GREEN	BLEDT	20020304ALH	LIC
49A KY LOUISVILLE	DTVPLN	DTVP1740	PLN

Result key: 55
 Scenario 19 Affected station 21
 Before Analysis

Results for: 48A IN BLOOMINGTON	USERRECORD01	APP
HAAT 354.0 m, ATV ERP 1000.0 kW		
	POPULATION	AREA (sq km)
within Noise Limited Contour	2365096	31662.5

Figure 3

not affected by terrain losses	2354797	31292.5
lost to NTSC IX	0	0.0
lost to additional IX by ATV	53172	1592.4
lost to ATV IX only	53172	1592.4
lost to all IX	53172	1592.4

Potential Interfering Stations Included in above Scenario 19

47A KY LOUISVILLE	DTVPLN	DTVP1675	PLN
48A IL CHAMPAIGN	BMPCDT	20050701ACC	CP
48A IN SOUTH BEND	BLCDT	20060109ABG	LIC
48A KY BOWLING GREEN	DTVPLN	DTVP1709	PLN
49A KY LOUISVILLE	BPCDT	20051130ACJ	CP

Result key: 56
 Scenario 20 Affected station 21
 Before Analysis

Results for: 48A IN BLOOMINGTON	USERRECORD01	APP
HAAT 354.0 m, ATV ERP 1000.0 kW		
	POPULATION	AREA (sq km)
within Noise Limited Contour	2365096	31662.5
not affected by terrain losses	2354797	31292.5
lost to NTSC IX	0	0.0
lost to additional IX by ATV	53172	1592.4
lost to ATV IX only	53172	1592.4
lost to all IX	53172	1592.4

Potential Interfering Stations Included in above Scenario 20

47A KY LOUISVILLE	DTVPLN	DTVP1675	PLN
48A IL CHAMPAIGN	BMPCDT	20050701ACC	CP
48A IN SOUTH BEND	BLCDT	20060109ABG	LIC
48A KY BOWLING GREEN	DTVPLN	DTVP1709	PLN
49A KY LOUISVILLE	DTVPLN	DTVP1740	PLN

Result key: 57
 Scenario 21 Affected station 21
 Before Analysis

Results for: 48A IN BLOOMINGTON	USERRECORD01	APP
HAAT 354.0 m, ATV ERP 1000.0 kW		
	POPULATION	AREA (sq km)
within Noise Limited Contour	2365096	31662.5
not affected by terrain losses	2354797	31292.5
lost to NTSC IX	0	0.0
lost to additional IX by ATV	53172	1592.4
lost to ATV IX only	53172	1592.4
lost to all IX	53172	1592.4

Potential Interfering Stations Included in above Scenario 21

47A KY LOUISVILLE	DTVPLN	DTVP1675	PLN
48A IL CHAMPAIGN	BMPCDT	20050701ACC	CP
48A IN SOUTH BEND	DTVPLN	DTVP1708	PLN
48A KY BOWLING GREEN	BLEDT	20020304ALH	LIC
49A KY LOUISVILLE	BPCDT	20051130ACJ	CP

Figure 3

Result key:	58		
Scenario	22	Affected station	21
Before Analysis			
Results for:	48A IN BLOOMINGTON	USERRECORD01	APP
HAAT	354.0 m, ATV ERP 1000.0 kW		
	POPULATION	AREA (sq km)	
within Noise Limited Contour	2365096	31662.5	
not affected by terrain losses	2354797	31292.5	
lost to NTSC IX	0	0.0	
lost to additional IX by ATV	53172	1592.4	
lost to ATV IX only	53172	1592.4	
lost to all IX	53172	1592.4	
Potential Interfering Stations Included in above Scenario	22		
47A KY LOUISVILLE	DTVPLN	DTVP1675	PLN
48A IL CHAMPAIGN	BMPCDT	20050701ACC	CP
48A IN SOUTH BEND	DTVPLN	DTVP1708	PLN
48A KY BOWLING GREEN	BLEDT	20020304ALH	LIC
49A KY LOUISVILLE	DTVPLN	DTVP1740	PLN
Result key:	59		
Scenario	23	Affected station	21
Before Analysis			
Results for:	48A IN BLOOMINGTON	USERRECORD01	APP
HAAT	354.0 m, ATV ERP 1000.0 kW		
	POPULATION	AREA (sq km)	
within Noise Limited Contour	2365096	31662.5	
not affected by terrain losses	2354797	31292.5	
lost to NTSC IX	0	0.0	
lost to additional IX by ATV	53172	1592.4	
lost to ATV IX only	53172	1592.4	
lost to all IX	53172	1592.4	
Potential Interfering Stations Included in above Scenario	23		
47A KY LOUISVILLE	DTVPLN	DTVP1675	PLN
48A IL CHAMPAIGN	BMPCDT	20050701ACC	CP
48A IN SOUTH BEND	DTVPLN	DTVP1708	PLN
48A KY BOWLING GREEN	DTVPLN	DTVP1709	PLN
49A KY LOUISVILLE	BPCDT	20051130ACJ	CP
Result key:	60		
Scenario	24	Affected station	21
Before Analysis			
Results for:	48A IN BLOOMINGTON	USERRECORD01	APP
HAAT	354.0 m, ATV ERP 1000.0 kW		
	POPULATION	AREA (sq km)	
within Noise Limited Contour	2365096	31662.5	
not affected by terrain losses	2354797	31292.5	
lost to NTSC IX	0	0.0	
lost to additional IX by ATV	53172	1592.4	
lost to ATV IX only	53172	1592.4	

Figure 3

lost to all IX	53172	1592.4	
Potential Interfering Stations Included in above Scenario	24		
47A KY LOUISVILLE	DTVPLN	DTVP1675	PLN
48A IL CHAMPAIGN	BMPCDT	20050701ACC	CP
48A IN SOUTH BEND	DTVPLN	DTVP1708	PLN
48A KY BOWLING GREEN	DTVPLN	DTVP1709	PLN
49A KY LOUISVILLE	DTVPLN	DTVP1740	PLN
Result key:	61		
Scenario	25	Affected station	21
Before Analysis			
Results for:	48A IN BLOOMINGTON	USERRECORD01	APP
HAAT	354.0 m, ATV ERP 1000.0 kW		
	POPULATION	AREA (sq km)	
within Noise Limited Contour	2365096	31662.5	
not affected by terrain losses	2354797	31292.5	
lost to NTSC IX	0	0.0	
lost to additional IX by ATV	53172	1592.4	
lost to ATV IX only	53172	1592.4	
lost to all IX	53172	1592.4	
Potential Interfering Stations Included in above Scenario	25		
47A KY LOUISVILLE	DTVPLN	DTVP1675	PLN
48A IL CHAMPAIGN	DTVPLN	DTVP1706	PLN
48A IN SOUTH BEND	BLCDDT	20060109ABG	LIC
48A KY BOWLING GREEN	BLEDT	20020304ALH	LIC
49A KY LOUISVILLE	BPCDT	20051130ACJ	CP
Result key:	62		
Scenario	26	Affected station	21
Before Analysis			
Results for:	48A IN BLOOMINGTON	USERRECORD01	APP
HAAT	354.0 m, ATV ERP 1000.0 kW		
	POPULATION	AREA (sq km)	
within Noise Limited Contour	2365096	31662.5	
not affected by terrain losses	2354797	31292.5	
lost to NTSC IX	0	0.0	
lost to additional IX by ATV	53172	1592.4	
lost to ATV IX only	53172	1592.4	
lost to all IX	53172	1592.4	
Potential Interfering Stations Included in above Scenario	26		
47A KY LOUISVILLE	DTVPLN	DTVP1675	PLN
48A IL CHAMPAIGN	DTVPLN	DTVP1706	PLN
48A IN SOUTH BEND	BLCDDT	20060109ABG	LIC
48A KY BOWLING GREEN	BLEDT	20020304ALH	LIC
49A KY LOUISVILLE	DTVPLN	DTVP1740	PLN
Result key:	63		
Scenario	27	Affected station	21
Before Analysis			

Figure 3

Results for: 48A IN BLOOMINGTON USERRECORD01 APP
 HAAT 354.0 m, ATV ERP 1000.0 kW

	POPULATION	AREA (sq km)
within Noise Limited Contour	2365096	31662.5
not affected by terrain losses	2354797	31292.5
lost to NTSC IX	0	0.0
lost to additional IX by ATV	53172	1592.4
lost to ATV IX only	53172	1592.4
lost to all IX	53172	1592.4

Potential Interfering Stations Included in above Scenario 27

47A KY LOUISVILLE	DTVPLN	DTVP1675	PLN
48A IL CHAMPAIGN	DTVPLN	DTVP1706	PLN
48A IN SOUTH BEND	BLCDT	20060109ABG	LIC
48A KY BOWLING GREEN	DTVPLN	DTVP1709	PLN
49A KY LOUISVILLE	BPCDT	20051130ACJ	CP

Result key: 64
 Scenario 28 Affected station 21
 Before Analysis

Results for: 48A IN BLOOMINGTON USERRECORD01 APP
 HAAT 354.0 m, ATV ERP 1000.0 kW

	POPULATION	AREA (sq km)
within Noise Limited Contour	2365096	31662.5
not affected by terrain losses	2354797	31292.5
lost to NTSC IX	0	0.0
lost to additional IX by ATV	53172	1592.4
lost to ATV IX only	53172	1592.4
lost to all IX	53172	1592.4

Potential Interfering Stations Included in above Scenario 28

47A KY LOUISVILLE	DTVPLN	DTVP1675	PLN
48A IL CHAMPAIGN	DTVPLN	DTVP1706	PLN
48A IN SOUTH BEND	BLCDT	20060109ABG	LIC
48A KY BOWLING GREEN	DTVPLN	DTVP1709	PLN
49A KY LOUISVILLE	DTVPLN	DTVP1740	PLN

Result key: 65
 Scenario 29 Affected station 21
 Before Analysis

Results for: 48A IN BLOOMINGTON USERRECORD01 APP
 HAAT 354.0 m, ATV ERP 1000.0 kW

	POPULATION	AREA (sq km)
within Noise Limited Contour	2365096	31662.5
not affected by terrain losses	2354797	31292.5
lost to NTSC IX	0	0.0
lost to additional IX by ATV	53172	1592.4
lost to ATV IX only	53172	1592.4
lost to all IX	53172	1592.4

Potential Interfering Stations Included in above Scenario 29

Figure 3

47A KY LOUISVILLE	DTVPLN	DTVP1675	PLN
48A IL CHAMPAIGN	DTVPLN	DTVP1706	PLN
48A IN SOUTH BEND	DTVPLN	DTVP1708	PLN
48A KY BOWLING GREEN	BLEDT	20020304ALH	LIC
49A KY LOUISVILLE	BPCDT	20051130ACJ	CP

Result key: 66
 Scenario 30 Affected station 21
 Before Analysis

Results for: 48A IN BLOOMINGTON USERRECORD01 APP
 HAAT 354.0 m, ATV ERP 1000.0 kW

	POPULATION	AREA (sq km)
within Noise Limited Contour	2365096	31662.5
not affected by terrain losses	2354797	31292.5
lost to NTSC IX	0	0.0
lost to additional IX by ATV	53172	1592.4
lost to ATV IX only	53172	1592.4
lost to all IX	53172	1592.4

Potential Interfering Stations Included in above Scenario 30

47A KY LOUISVILLE	DTVPLN	DTVP1675	PLN
48A IL CHAMPAIGN	DTVPLN	DTVP1706	PLN
48A IN SOUTH BEND	DTVPLN	DTVP1708	PLN
48A KY BOWLING GREEN	BLEDT	20020304ALH	LIC
49A KY LOUISVILLE	DTVPLN	DTVP1740	PLN

Result key: 67
 Scenario 31 Affected station 21
 Before Analysis

Results for: 48A IN BLOOMINGTON USERRECORD01 APP
 HAAT 354.0 m, ATV ERP 1000.0 kW

	POPULATION	AREA (sq km)
within Noise Limited Contour	2365096	31662.5
not affected by terrain losses	2354797	31292.5
lost to NTSC IX	0	0.0
lost to additional IX by ATV	53172	1592.4
lost to ATV IX only	53172	1592.4
lost to all IX	53172	1592.4

Potential Interfering Stations Included in above Scenario 31

47A KY LOUISVILLE	DTVPLN	DTVP1675	PLN
48A IL CHAMPAIGN	DTVPLN	DTVP1706	PLN
48A IN SOUTH BEND	DTVPLN	DTVP1708	PLN
48A KY BOWLING GREEN	DTVPLN	DTVP1709	PLN
49A KY LOUISVILLE	BPCDT	20051130ACJ	CP

Result key: 67
 Scenario 31 Affected station 21
 Before Analysis

Results for: 48A IN BLOOMINGTON USERRECORD01 APP
 HAAT 354.0 m, ATV ERP 1000.0 kW

	POPULATION	AREA (sq km)
within Noise Limited Contour	2365096	31662.5
not affected by terrain losses	2354797	31292.5
lost to NTSC IX	0	0.0
lost to additional IX by ATV	53172	1592.4
lost to ATV IX only	53172	1592.4
lost to all IX	53172	1592.4

Potential Interfering Stations Included in above Scenario 31

47A KY LOUISVILLE	DTVPLN	DTVP1675	PLN
48A IL CHAMPAIGN	DTVPLN	DTVP1706	PLN
48A IN SOUTH BEND	DTVPLN	DTVP1708	PLN
48A KY BOWLING GREEN	DTVPLN	DTVP1709	PLN
49A KY LOUISVILLE	BPCDT	20051130ACJ	CP

Result key: 67
 Scenario 31 Affected station 21
 Before Analysis

Results for: 48A IN BLOOMINGTON USERRECORD01 APP
 HAAT 354.0 m, ATV ERP 1000.0 kW

	POPULATION	AREA (sq km)
within Noise Limited Contour	2365096	31662.5
not affected by terrain losses	2354797	31292.5
lost to NTSC IX	0	0.0
lost to additional IX by ATV	53172	1592.4
lost to ATV IX only	53172	1592.4
lost to all IX	53172	1592.4

Potential Interfering Stations Included in above Scenario 31

47A KY LOUISVILLE	DTVPLN	DTVP1675	PLN
48A IL CHAMPAIGN	DTVPLN	DTVP1706	PLN
48A IN SOUTH BEND	DTVPLN	DTVP1708	PLN
48A KY BOWLING GREEN	DTVPLN	DTVP1709	PLN
49A KY LOUISVILLE	BPCDT	20051130ACJ	CP

Result key: 68
 Scenario 32 Affected station 21
 Before Analysis

Results for: 48A IN BLOOMINGTON USERRECORD01 APP
 HAAT 354.0 m, ATV ERP 1000.0 kW

	POPULATION	AREA (sq km)
within Noise Limited Contour	2365096	31662.5
not affected by terrain losses	2354797	31292.5
lost to NTSC IX	0	0.0
lost to additional IX by ATV	53172	1592.4
lost to ATV IX only	53172	1592.4
lost to all IX	53172	1592.4

Potential Interfering Stations Included in above Scenario 29

Figure 3

within Noise Limited Contour	2365096	31662.5	
not affected by terrain losses	2354797	31292.5	
lost to NTSC IX	0	0.0	
lost to additional IX by ATV	53172	1592.4	
lost to ATV IX only	53172	1592.4	
lost to all IX	53172	1592.4	
Potential Interfering Stations Included in above Scenario		32	
47A KY LOUISVILLE	DTVPLN	DTVP1675	PLN
48A IL CHAMPAIGN	DTVPLN	DTVP1706	PLN
48A IN SOUTH BEND	DTVPLN	DTVP1708	PLN
48A KY BOWLING GREEN	DTVPLN	DTVP1709	PLN
49A KY LOUISVILLE	DTVPLN	DTVP1740	PLN
#####			
FINISHED FINISHED FINISHED FINISHED FINISHED FINISHED			