

**United States Department of the Interior
National Park Service**

National Register of Historic Places Continuation Sheet

Dr. Martin G. Brumbaugh

Santa Isabel, Puerto Rico

Early 20th Century Schools in Puerto Rico

Section number 7

Page 5

Fig. 5. Inside concrete patio with wooden and metal roof, 1913. (Source: Archivo General de Puerto Rico Fondo: Obras Públicas Serie: Edificios Escolares)



United States Department of the Interior
National Park Service

National Register of Historic Places Continuation Sheet

Dr. Martin G. Brumbaugh

Santa Isabel, Puerto Rico

Early 20th Century Schools in Puerto Rico

Section number 7

Page 6

Fig. 5. Auditorium, 2010



**United States Department of the Interior
National Park Service**

National Register of Historic Places Continuation Sheet

Dr. Martin G. Brumbaugh

Santa Isabel, Puerto Rico

Early 20th Century Schools in Puerto Rico

Section number 7

Page 7

Fig. 7. Auditorium's façade, 2010.



**United States Department of the Interior
National Park Service**

National Register of Historic Places Continuation Sheet

Dr. Martin G. Brumbaugh

Santa Isabel, Puerto Rico

Early 20th Century Schools in Puerto Rico

Section number 7

Page 8

Fig. 8. Interior yard with arcade, 2010.



United States Department of the Interior
National Park Service

National Register of Historic Places Continuation Sheet

Dr. Martin G. Brumbaugh

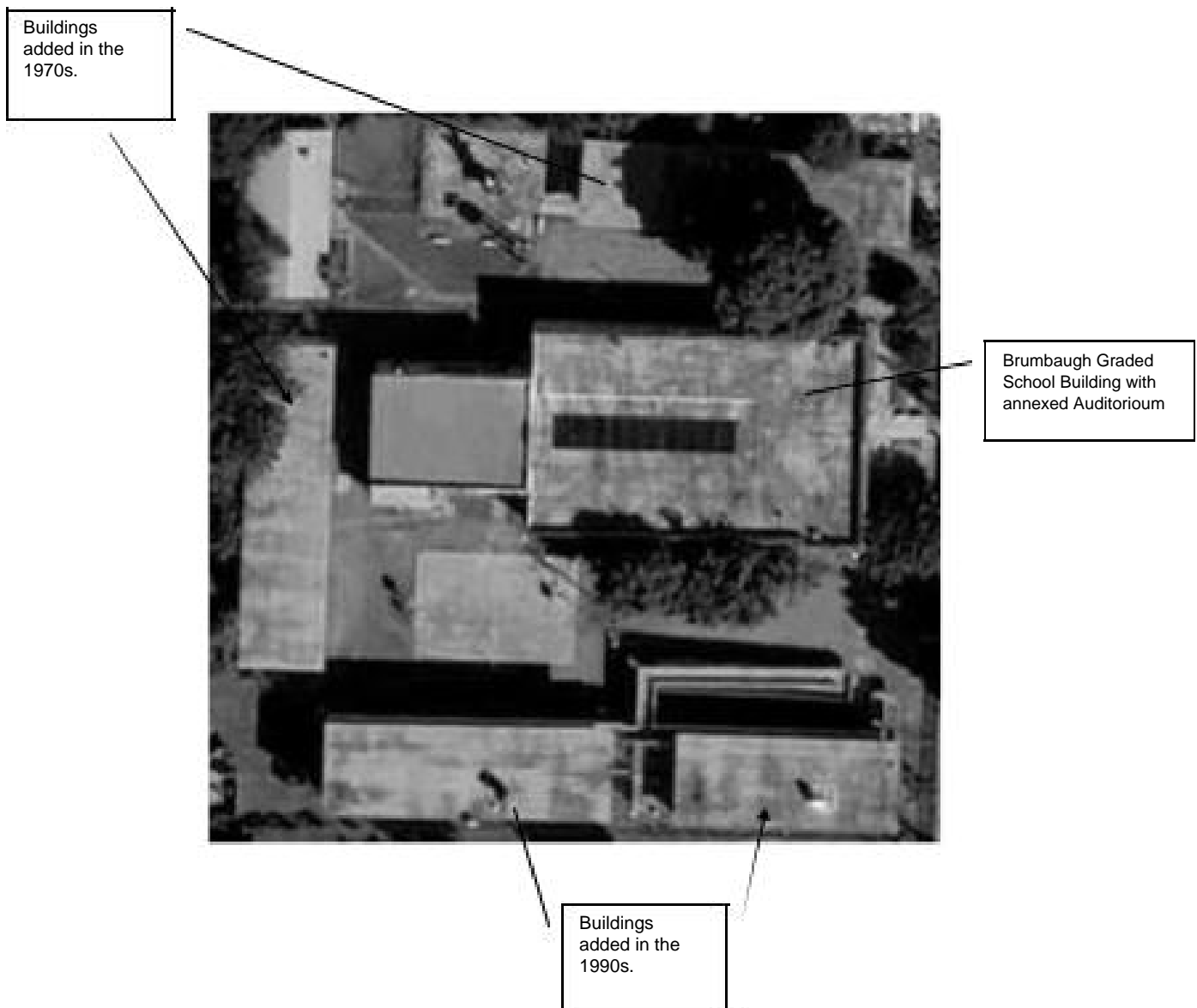
Santa Isabel, Puerto Rico

Early 20th Century Schools in Puerto Rico

Section number 7

Page 9

Fig. 9. Brumbaugh Graded School site



United States Department of the Interior
National Park Service

National Register of Historic Places Continuation Sheet

Dr. Martin G. Brumbaugh

Santa Isabel, Puerto Rico

Early 20th Century Schools in Puerto Rico

Section number 8

Page 10

Fig. 10 Variety of schools built between 1901-1906. (Source: Annual Reports of the Commisioners Of Education, 1901-1906)



United States Department of the Interior
National Park Service

National Register of Historic Places Continuation Sheet

Dr. Martin G. Brumbaugh

Santa Isabel, Puerto Rico

Early 20th Century Schools in Puerto Rico

Section number 8

Page 11

Fig. 9 (continuation)



RURAL SCHOOL (1 ROOM), MANATI. ERECTED BY LOCAL SCHOOL BOARD. COST \$600.



RURAL SCHOOL (1 ROOM), YAUCO. ERECTED BY LOCAL SCHOOL BOARD. COST \$525.

United States Department of the Interior
National Park Service

National Register of Historic Places Continuation Sheet

Dr. Martin G. Brumbaugh

Santa Isabel, Puerto Rico

Early 20th Century Schools in Puerto Rico

Section number 8

Page 12

Fig. 10 Dr. Martin Brumbaugh Graded School, 1906. (Source: Annual Report of the Commissioner of Education, 1906.)



GRADED SCHOOL (4 ROOMS), SANTA ISABEL. ERECTED BY DEPARTMENT OF EDUCATION. COST \$7,665.

United States Department of the Interior
National Park Service

National Register of Historic Places Continuation Sheet

Dr. Martin G. Brumbaugh

Santa Isabel, Puerto Rico

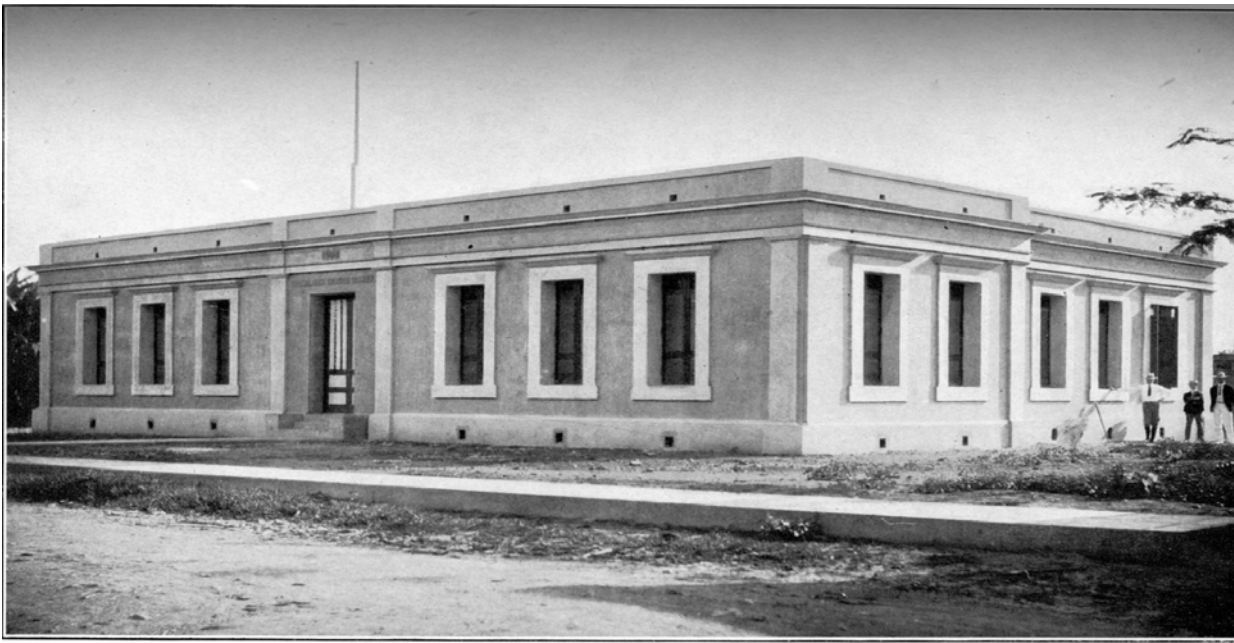
Early 20th Century Schools in Puerto Rico

Section number 8

Page 13

Fig. 11

1906



GRADED SCHOOL (4 ROOMS), SANTA ISABEL. ERECTED BY DEPARTMENT OF EDUCATION. COST \$7,665.

2010



United States Department of the Interior
National Park Service

National Register of Historic Places Continuation Sheet

Dr. Martin G. Brumbaugh

Santa Isabel, Puerto Rico

Early 20th Century Schools in Puerto Rico

Section number 8

Page 14

Fig. 11 (continuation)

Detail, 1906



Detail, 2010

