

K268BH
Mesquite, NV
Proposed Minor Modification
of Licensed Translator Facility

Application Overview:

As a result of the recent grant of BPH-20091016AEO, the primary service of KCLS(FM) has been permitted to serve the community of Leeds, UT, on Channel 268C0 which is co-channel to the currently licensed, secondary services of translator K268BH. The permitted KCLS(FM) operations at Leeds and the licensed K268BH operations are in relative proximity to each other and will therefore cause impermissible interference towards each other.

In order to prevent the imminent interference from occurring, and due to the nature of the translator being a secondary service to KCLS(FM), the Applicant proactively seeks a channel displacement change for K268BH. Unfortunately, the applicant has determined that it is precluded from moving to an adjacent channel or intermediate frequency in accordance with Section 74.1233(a)(1) to mitigate the impending interference due to Section 74.1204 prohibited overlap issues with other stations on those channels.

Exhibit 1 includes a Preclusion Study of the Adjacent to which K268BH could investigate moving to under the minor change provisions of the Rules (Adjacent Channels 265 through 271). A change to the I.F. frequency is not permissible as it would place the commercial translator in the reserved band. As can be seen in the Preclusion Study, however, Channels 265 through 271 are not available for K268BH as operations on those channels would cause interference to KCLS(FM) on all minor-change eligible channels since the translator is in a mixed residential

area and the operation would place an interfering contour over occupied structures thereby eliminating the possibility of operating on a second or third adjacent channel to KCLS(FM).

The Applicant has determined that Channel 294 can be made available for the instant facility's use. However, a move to this channel change would be considered non-adjacent. Therefore, the Applicant respectfully seeks a waiver Section 74.1233(a)(1) of the Commission's Rules that would otherwise consider the relocation to a non-adjacent channel to be a "major change."

Although K268BH is considered a secondary service as a translator, it provides an extremely valuable service to the public. The translator is located at Mesquite, NV, population 15,276. Termination of K268BH's operations would disserve the listening public and grant of a waiver due to the unique circumstances of this request would further the public interest. *See WAIT Radio v. FCC*, 418 F. 2d 1153, 1157 (D.C. Cir. 1969), *cert denied*, 409 U.S. 1027 (1972).

Technical Information:

The Applicant hereby proposes to modify only the proposed Channel of the instant facility. All other operating parameters such as location, height, and ERP will remain the same as that which is currently licensed as follows:

Tech Box:

Channel:	294
Antenna Coordinates:	N36-45-30, W 114-01-10 (NAD 27)
ASRN:	N/A
Tower Site Base AMSL:	624 m
Overall Tower Height AGL:	15 m
COR AGL:	12 m
ERP:	0.22 kW
Directional Antenna:	No

Interference Study:

Exhibit 3 is a contour overlap study demonstrating that the proposed antenna site provides requisite contour protection towards all applications, authorizations, and permits pursuant to Section 74.1204.

No Co-Located Directional Emitters:

No directional emitters are authorized to use the proposed tower.

Downward Radiation Study (FM Model):

The proposed FM Facility has been evaluated in terms of potential radiofrequency electromagnetic field exposure at ground level in accordance with OET Bulletin No. 65, Evaluating Compliance with FCC Specified Guidelines for Human Exposure to Radiofrequency Electromagnetic Fields (OET Bulletin 65, Second Edition 97-01, August, 1997). The Commission's FM Model Power Density Prediction program was employed to determine the Field. Using the Shively 6810 Series antenna with 1 sections and 1 wavelength spacing, and the AGL height and ERP proposed in this application, the highest predicted power density 2 meters above ground is less than 15.65% of the Uncontrolled Standard with a Power Density of 31.3 microwatts per square centimeter 10.4 meters from the base of the tower.

Even though the site will fully comply with the Uncontrolled Site Standards, access to the transmitting site will be restricted and appropriately marked with warning signs. When it becomes necessary for workers to ascend the tower, appropriate measures, such as reduction or shut down of power if necessary, shall be taken to ensure that the human exposure to radiofrequency radiation will not exceed the FCC guidelines.

Existing Tower:

The proposed facility is exempt from environmental processing because the facility is not located at a location specified in Section 1.1307(a)(1)-(8) of the Commission's Rules and since the tower in question already exists.

Exhibit 1

Adjacent Channel Preclusion Study

K268BH on Channel 268 (current channel)											
Section 74.1204 Channel Overlap Tabulations											
REFERENCE		CH#	268D	-	101.5 MHz,	Pwr= 0.22 kW,	HAAT= -249.5 M,	COR= 631 M	DISPLAY DATES		
36 45 30.0 N.		Average Protected F(50-50)= 6.87 km							DATA 03-12-12		
114 01 10.0 W.		Omni-directional							SEARCH 03-12-12		
CH CITY	CALL	TYPE ANT STATE	AZI <--	DIST FILE #	LAT LNG	PWR(kW) HAAT(M)	INT(km) COR(M)	PRO(km) LICENSEE	*IN* (Overlap in km)	*OUT*	
268CO Leeds	KCLS	CP NCX UT	78.0 258.3	48.16 BPH20091016AEO	36 50 49.0 113 29 28.0	40.000 620	162.5 1985	70.1 Canyon Media Group, LIc	-121.2*	-44.9*	
268D Mesquite	K268BH	LIC _C_ NV	0.0 0.0	0.00 BLFT20070907ADF	36 45 30.0 114 01 10.0	0.220 -250	23.0 631	6.9 Canyon Media Group, LIc	-29.9*	-29.9*	
268D Shiwi ts	K268BT	LIC DV_ UT	15.4 195.5	45.70 BLFT20110811ABG	37 09 19.0 113 52 57.0	0.010	4.2 2361	0.5 Patricia J. Young	31.7	12.6	
215A Mesquite	KAI Z	LIC _CX NV	302.7 122.5	28.58 BLED20100915ABX	36 53 48.0 114 17 23.0	0.500 232	36.4 1138	33.1 Educational Media Foundati	10.0R	18.6M	
268D Henderson	640249	APP _C_ NV	226.9 46.3	121.49 BNPFT20030314BIR	36 00 29.0 115 00 20.0	0.250 324	81.3 1025	27.1 Lotus Broadcasting Corp.	33.3	71.4	
270CO Las Vegas	KWID	LIC _CX NV	225.7 45.1	128.67 BLH20120214ACK	35 56 44.0 115 02 31.0	47.000 579	11.0 1370	86.1 Texas Lotus Corp.	110.8	41.5	
268D Las Vegas	650345	APP _C_ NV	221.9 41.4	113.45 BNPFT20030317MED	35 59 46.0 114 51 44.0	0.010 490	52.9 1108	14.5 Southern Nevada Educatio	53.7	76.0	
269D Hurricane	K269AF	LIC _HN UT	54.1 234.5	80.78 BLFT259	37 10 54.0 113 16 53.0	0.250 -132	16.4 1061	11.4 Ccr-st. George Iv, LIc	57.6	59.6	

Terrain database is NGDC 30 SEC , R= 73.215 qualifying spacings or FCC minimum Spacings in KM, M= Margin in KM
Contour distances are on direct line to and from reference station. Reference zone= , Co to 3rd adjacent.
Ant Column: (D= DA Standard, Z= DA 73.215, N= Not DA 73.215, _= Omni), Polarization (C,H,V,E), Beamtilt(Y,N,X)
"*"affixed to 'IN' or 'OUT' values = site inside protected contour.
« = Station meets FCC minimum distance spacing for its class.

K268BH on Channel 271 (3 Channels Higher)											
Section 74.1204 Channel Overlap Tabulations											
REFERENCE		CH#	271D	-	102.1 MHz,	Pwr= 0.22 kW,	HAAT= -249.5 M,	COR= 631 M	DISPLAY DATES		
36 45 30.0 N.										DATA	03-12-12
114 01 10.0 W.		Average Protected F(50-50)= 6.87 km								SEARCH	03-12-12
Omni-directional											
CH	CALL	TYPE	ANT	AZI	DIST	LAT	PWR(kW)	INT(km)	PRO(km)	*IN*	*OUT*
CITY		STATE		<--	FILE #	LNG	HAAT(M)	COR(M)	LICENSEE	(Overlap in km)	
272C0 KCDC		CP	ZCX	15.4	45.67	37 09 18.0	7.500	114.7	78.2	-78.9*	-46.1*
La Verkin		UT		195.5	BMPH20101124AGH	113 52 57.0	1080	2344	Cochise Broadcasting		Lic
268C0 KCLS		CP	NCX	78.0	48.16	36 50 49.0	40.000	8.9	70.1	32.4	-23.0*
Leeds		UT		258.3	BPH20091016AEO	113 29 28.0	620	1985	Canyon Media Group,		Lic
268D K268BH		LIC	_C_	0.0	0.00	36 45 30.0	0.220	1.0	6.9	-7.9*	-7.9*
Mesquite		NV		0.0	BLFT20070907ADF	114 01 10.0	-250	631	Canyon Media Group,		Lic
273D K273EZ		LIC	_C_	0.0	0.00	36 45 30.0	0.218	1.0	6.9	-7.9*	-7.9*
Mesquite		NV		0.0	BLFT20070723ABL	114 01 10.0	-249	632	Rockwell Media Foundation		
270C0 KWID		LIC	_CX	225.7	128.67	35 56 44.0	47.000	126.9	86.1	-5.1	32.7
Las Vegas		NV		45.1	BLH20120214ACK	115 02 31.0	579	1370	Texas Lotus Corp.		
274C KCYE		LIC	_C_	225.7	128.68	35 56 46.0	99.000	14.5	94.5	107.3	33.1
Boulder City		NV		45.1	BLH20010709ABU	115 02 34.0	603	1390	Kjul License, Lic		
268D K268BT		LIC	DV_	15.4	45.70	37 09 19.0	0.010	0.0	0.5	35.9	44.2
Shivwits		UT		195.5	BLFT20110811ABG	113 52 57.0		2361	Patricia J. Young		
272D K272AQ		LIC	_HN	49.4	52.30	37 03 49.0	0.014	9.2	6.5	36.2	35.9
St. George		UT		229.6	BLFT19790625IB	113 34 20.0	38	956	Ccr-st. George Iv, Lic		
217C3 KXDS		LIC	_DC_	78.0	48.16	36 50 49.0	0.380	23.1	22.0	12.0R	36.2M
Santa Clara		UT		258.3	BLED20100727AFC	113 29 28.0	565	1930	Dixie State College Of Uta		
270L1 KTIM-LP		LIC	___	42.3	55.81	37 07 45.0	0.100	8.0	5.6	41.0	40.3
St. George		UT		222.5	BLL20060922AEC	113 35 46.0		934	Wastecon Environmental, In		

Terrain database is NGDC 30 SEC, R= 73.215 qualifying spacings or FCC minimum Spacings in KM, M= Margin in KM
 Contour distances are on direct line to and from reference station. Reference zone=, Co to 3rd adjacent.
 Ant Column: (D= DA Standard, Z= DA 73.215, N= Not DA 73.215, _= Omni), Polarization (C,H,V,E), Beamtilt(Y,N,X)
 "*"affixed to 'IN' or 'OUT' values = site inside protected contour.
 « = Station meets FCC minimum distance spacing for its class.

K268BH on Channel 270 (2 Channels Higher)											
Section 74.1204 Channel Overlap Tabulations											
REFERENCE		CH#	270D	-	101.9 MHz,	Pwr= 0.22 kW,	HAAT= -249.5 M,	COR= 631 M	DISPLAY DATES		
36 45 30.0 N.		Average Protected F(50-50)= 6.87 km							DATA 03-12-12		
114 01 10.0 W.		Omni-directional							SEARCH 03-12-12		
CH	CALL	TYPE	ANT	AZI	DIST	LAT	PWR(kW)	INT(km)	PRO(km)	*IN*	*OUT*
CITY		STATE		<--	FILE #	LNG	HAAT(M)	COR(M)	LICENSEE	(Overlap in km)	
270C0	KWID	LIC_CX		225.7	128.67	35 56 44.0	47.000	183.7	86.1	-61.8*	19.6
Las Vegas		NV		45.1	BLH20120214ACK	115 02 31.0	579	1370	Texas Lotus Corp.		
272C0	KCDC	CP_ZCX		15.4	45.67	37 09 18.0	7.500	5.6	78.2	30.2	-33.5*
La Verkin		UT		195.5	BMPH20101124AGH	113 52 57.0	1080	2344	Cochise Broadcasting Lic		
268C0	KCLS	CP_NCX		78.0	48.16	36 50 49.0	40.000	8.9	70.1	32.4	-23.0*
Leeds		UT		258.3	BPH20091016AEO	113 29 28.0	620	1985	Canyon Media Group, Lic		
268D	K268BH	LIC_C_		0.0	0.00	36 45 30.0	0.220	1.0	6.9	-7.9*	-7.9*
Mesquite		NV		0.0	BLFT20070907ADF	114 01 10.0	-250	631	Canyon Media Group, Lic		
273D	K273EZ	LIC_C_		0.0	0.00	36 45 30.0	0.218	1.0	6.9	-7.9*	-7.9*
Mesquite		NV		0.0	BLFT20070723ABL	114 01 10.0	-249	632	Rockwell Media Foundation		
270L1	KTIM-LP	LIC_		42.3	55.81	37 07 45.0	0.100	18.6	5.6	30.4	27.2
St. George		UT		222.5	BLL20060922AEC	113 35 46.0		934	Wastecon Environmental, In		
268D	K268BT	LIC_DV_		15.4	45.70	37 09 19.0	0.010	0.0	0.5	35.9	44.2
Shivwits		UT		195.5	BLFT20110811ABG	113 52 57.0		2361	Patricia J. Young		
217C3	KXDS	LIC_DC_		78.0	48.16	36 50 49.0	0.380	23.1	22.0	12.0R	36.2M
Santa Clara		UT		258.3	BLED20100727AFC	113 29 28.0	565	1930	Dixie State College Of Uta		
272D	K272AQ	LIC_HN		49.4	52.30	37 03 49.0	0.014	0.3	6.5	45.2	44.7
St. George		UT		229.6	BLFT19790625IB	113 34 20.0	38	956	Ccr-st. George Iv, Lic		
269D	K269AF	LIC_HN		54.1	80.78	37 10 54.0	0.250	16.4	11.4	57.6	59.6
Hurricane		UT		234.5	BLFT259	113 16 53.0	-132	1061	Ccr-st. George Iv, Lic		

Terrain database is NGDC 30 SEC , R= 73.215 qualifying spacings or FCC minimum Spacings in KM, M= Margin in KM
 Contour distances are on direct line to and from reference station. Reference zone= , Co to 3rd adjacent.
 Ant Column: (D= DA Standard, Z= DA 73.215, N= Not DA 73.215, _= Omni), Polarization (C,H,V,E), Beamtilt(Y,N,X)
 "*"affixed to 'IN' or 'OUT' values = site inside protected contour.
 « = Station meets FCC minimum distance spacing for its class.

K268BH on Channel 269 (1 Channel Higher)											
Section 74.1204 Channel Overlap Tabulations											
CH# 269D - 101.7 MHz, Pwr= 0.22 kW, HAAT= -249.5 M, COR= 631 M											
Average Protected F(50-50)= 6.87 km											
Omni-directional											
DISPLAY DATES											
DATA 03-12-12											
SEARCH 03-12-12											
CH	CALL	TYPE	ANT	AZI	DIST	LAT	PWR(kW)	INT(km)	PRO(km)	*IN*	*OUT*
CITY		STATE		<--	FILE #	LNG	HAAT(M)	COR(M)	LICENSEE	(Overlap in km)	
268C0	KCLS	CP	NCX	78.0	48.16	36 50 49.0	40.000	103.0	70.1	-61.7*	-31.8*
Leeds		UT		258.3	BPH20091016AEO	113 29 28.0	620	1985	Canyon Media Group, Lic		
272C0	KCDC	CP	ZCX	15.4	45.67	37 09 18.0	7.500	5.6	78.2	30.2	-33.5*
La Verkin		UT		195.5	BMPH20101124AGH	113 52 57.0	1080	2344	Cochise Broadcasting Lic		
268D	K268BH	LIC	_C_	0.0	0.00	36 45 30.0	0.220	9.8	6.9	-16.7*	-16.7*
Mesquite		NV		0.0	BLFT20070907ADF	114 01 10.0	-250	631	Canyon Media Group, Lic		
270C0	KWID	LIC	_CX	225.7	128.67	35 56 44.0	47.000	126.9	86.1	-5.1	32.7
Las Vegas		NV		45.1	BLH20120214ACK	115 02 31.0	579	1370	Texas Lotus Corp.		
269C2	KCLS	LIC	_CX	338.8	135.57	37 53 44.0	0.200	107.3	41.1	18.4	61.5
Pi oche		NV		158.5	BLH20090811AAK	114 34 41.0	1025	2862	Canyon Media Group, Lic		
215A	KAI Z	LIC	_CX	302.7	28.58	36 53 48.0	0.500	36.4	33.1	10.0R	18.6M
Mesquite		NV		122.5	BLED20100915ABX	114 17 23.0	232	1138	Educational Media Foundati		
268D	K268BT	LIC	DV_	15.4	45.70	37 09 19.0	0.010	0.9	0.5	35.0	31.6
Shi vwi ts		UT		195.5	BLFT20110811ABG	113 52 57.0		2361	Patricia J. Young		
269D	K269AF	LIC	_HN	54.1	80.78	37 10 54.0	0.250	38.8	11.4	35.1	46.4
Hurricane		UT		234.5	BLFT259	113 16 53.0	-132	1061	Ccr-st. George Iv, Lic		
270L1	KTIM-LP	LIC	___	42.3	55.81	37 07 45.0	0.100	8.0	5.6	41.0	40.3
St. George		UT		222.5	BLL20060922AEC	113 35 46.0		934	Wastecon Environmental, In		
272D	K272AQ	LIC	_HN	49.4	52.30	37 03 49.0	0.014	0.3	6.5	45.2	44.7
St. George		UT		229.6	BLFT19790625IB	113 34 20.0	38	956	Ccr-st. George Iv, Lic		

Terrain database is NGDC 30 SEC , R= 73.215 qualifying spacings or FCC minimum Spacings in KM, M= Margin in KM
 Contour distances are on direct line to and from reference station. Reference zone= , Co to 3rd adjacent.
 Ant Column: (D= DA Standard, Z= DA 73.215, N= Not DA 73.215, _= Omni), Polarization (C,H,V,E), Beamtilt(Y,N,X)
 "*"affixed to 'IN' or 'OUT' values = site inside protected contour.
 « = Station meets FCC minimum distance spacing for its class.

K268BH on Channel 267 (1 Channel Lower) Section 74.1204 Channel Overlap Tabulations CH# 267D - 101.3 MHz, Pwr= 0.22 kW, HAAT= -249.5 M, COR= 631 M Average Protected F(50-50)= 6.87 km Omni-directional											
REFERENCE										DISPLAY DATES	
36 45 30.0 N.										DATA 03-12-12	
114 01 10.0 W.										SEARCH 03-12-12	
CH CITY	CALL	TYPE STATE	ANT	AZI <--	DIST FILE #	LAT LNG	PWR(kW) HAAT(M)	INT(km) COR(M)	PRO(km) LICENSEE	*IN* (Overlap in km)	*OUT*
268CO Leeds	KCLS	CP	NCX UT	78.0 258.3	48.16 BPH20091016AEO	36 50 49.0 113 29 28.0	40.000 620	103.0 1985	70.1 Canyon Medi a Group, Llc	-61.7*	-31.8*
268D Mesquite	K268BH	LIC	C_ NV	0.0 0.0	0.00 BLFT20070907ADF	36 45 30.0 114 01 10.0	0.220 -250	9.8 631	6.9 Canyon Medi a Group, Llc	-16.7*	-16.7*
264D Ivins	633405	APP	C_ UT	15.4 195.5	45.70 BNPFT20030314BYZ	37 09 19.0 113 52 57.0	0.010 1002	0.2 2272	17.0 Brigham Young Uni versity	35.7	27.6
268D Shi vwi ts	K268BT	LIC	DV_ UT	15.4 195.5	45.70 BLFT20110811ABG	37 09 19.0 113 52 57.0	0.010	0.9 2361	0.5 Patri cia J. Young	35.0	31.6
266L1 St. George	KOEZ-LP	APP	____ UT	49.3 229.6	52.21 BPL20120202AAA	37 03 49.0 113 34 25.0	0.100 30	13.7 941	9.8 Latinos Uni dos Broadcastin	31.7	32.6
266C Indian Springs	R10990	ADD	____ NV	265.7 84.5	175.14	36 37 24.0 115 58 19.0	100.000 600	131.8 1809	88.2 Sanpete County Broad'g Co.	32.3	71.3
264C Enoch	R10990	ADD	____ UT	37.6 218.2	141.01	37 45 32.0 113 02 23.0	100.000 600	16.6 2526	100.6 Sanpete County Broad'g Co.	117.6	39.3
266C Amargosa Valley	KPKK	CP	ZHX NV	266.2 85.0	170.41 BPH20090427ABY	36 38 26.0 115 55 15.0	100.000 588	118.0 1797	79.8 Sky Medi a, L. l. c.	41.3	74.6
270CO Las Vegas	KWID	LIC	CX NV	225.7 45.1	128.67 BLH20120214ACK	35 56 44.0 115 02 31.0	47.000 579	11.0 1370	86.1 Texas Lotus Corp.	110.8	41.5

Terrain database is NGDC 30 SEC , R= 73.215 qualifying spacings or FCC minimum Spacings in KM, M= Margin in KM
 Contour distances are on direct line to and from reference station. Reference zone= , Co to 3rd adjacent.
 Ant Column: (D= DA Standard, Z= DA 73.215, N= Not DA 73.215, _= Omni), Polarization (C,H,V,E), Beamtilt(Y,N,X)
 "*"affixed to 'IN' or 'OUT' values = site inside protected contour.

K268BH on Channel 266 (2 Channels Lower)											
Section 74.1204 Channel Overlap Tabulations											
REFERENCE		CH#	266D	-	101.1 MHz,	Pwr= 0.22 kW,	HAAT= -249.5 M,	COR= 631 M	DISPLAY DATES		
36 45 30.0 N.									DATA 03-12-12		
114 01 10.0 W.									SEARCH 03-12-12		
Average Protected F(50-50)= 6.87 km											
Omni-directional											
CH	CALL	TYPE	ANT	AZI	DIST	LAT	PWR(kW)	INT(km)	PRO(km)	*IN*	*OUT*
CITY		STATE		<--	FILE #	LNG	HAAT(M)	COR(M)	LICENSEE	(Overlap in km)	
266C	R10990	ADD	_____	265.7	175.14	36 37 24.0	100.000	192.5	88.2	-28.3*	49.6
Indian Springs		NV		84.5		115 58 19.0	600	1809	Sanpete County Broad'g Co.		
268C0	KCLS	CP	NCX	78.0	48.16	36 50 49.0	40.000	8.9	70.1	32.4	-23.0*
Leeds		UT		258.3	BPH20091016AEO	113 29 28.0	620	1985	Canyon Media Group, Llc		
266C	KPKK	CP	ZHX	266.2	170.41	36 38 26.0	100.000	174.9	79.8	-15.7*	52.6
Amargosa Valley		NV		85.0	BPH20090427ABY	115 55 15.0	588	1797	Sky Media, L.L.C.		
268D	K268BH	LIC	C_	0.0	0.00	36 45 30.0	0.220	1.0	6.9	-7.9*	-7.9*
Mesquite		NV		0.0	BLFT20070907ADF	114 01 10.0	-250	631	Canyon Media Group, Llc		
266L1	KOEZ-LP	APP	_____	49.3	52.21	37 03 49.0	0.100	32.8	9.8	12.5	19.4
St. George		UT		229.6	BPL20120202AAA	113 34 25.0	30	941	Latinos Unidos Broadcastin		
264D	633405	APP	C_	15.4	45.70	37 09 19.0	0.010	0.2	17.0	35.7	27.6
Ivins		UT		195.5	BNPFT20030314BYZ	113 52 57.0	1002	2272	Brigham Young University		
212C2	KSGU	LIC	CX	78.0	48.16	36 50 49.0	2.000	42.5	38.4	15.0R	33.2M
St. George		UT		258.3	BLED20051107AED	113 29 28.0	555	1921	Nevada Public Radio		
263C	KXNT-FM	LIC	CX	226.9	121.46	36 00 30.0	100.000	12.3	84.5	102.3	35.9
Henderson		NV		46.3	BMLH20070406ABM	115 00 20.0	357	1047	Cbs Radio Stations Inc.		
268D	K268BT	LIC	DV_	15.4	45.70	37 09 19.0	0.010	0.0	0.5	35.9	44.2
Shivwits		UT		195.5	BLFT20110811ABG	113 52 57.0		2361	Patricia J. Young		
264C	R10990	ADD	_____	37.6	141.01	37 45 32.0	100.000	16.6	100.6	117.6	39.3
Enoch		UT		218.2		113 02 23.0	600	2526	Sanpete County Broad'g Co.		
263D	K215CF	APP	C_	49.4	52.30	37 03 49.0	0.092	0.7	11.0	44.8	40.3
St. George		UT		229.6	BMJPFT20030310BJL	113 34 20.0	54	969	Utah State University Of A		
266D	632223	APP	C_	222.0	113.62	35 59 43.9	0.010	51.7	14.1	55.1	76.5
Boulder City		NV		41.5	BNPFT20030312ARJ	114 51 51.3	459	1081	Advance Ministries, Inc. D		

Terrain database is NGDC 30 SEC , R= 73.215 qualifying spacings or FCC minimum Spacings in KM, M= Margin in KM
Contour distances are on direct line to and from reference station. Reference zone= , Co to 3rd adjacent.
Ant Column: (D= DA Standard, Z= DA 73.215, N= Not DA 73.215, _= Omni), Polarization (C,H,V,E), Beamtilt(Y,N,X)
"*"affixed to 'IN' or 'OUT' values = site inside protected contour.
« = Station meets FCC minimum distance spacing for its class.

K268BH on Channel 266 (3 Channels Lower)											
Section 74.1204 Channel Overlap Tabulations											
REFERENCE		CH#	265D	-	100.9 MHz, Pwr= 0.22 kW, HAAT= -249.5 M, COR= 631 M				DISPLAY DATES		
36 45 30.0 N.					Average Protected F(50-50)= 6.87 km				DATA 03-12-12		
114 01 10.0 W.					Omni-directional				SEARCH 03-12-12		
CH	CALL	TYPE	ANT	AZI	DIST	LAT	PWR(kW)	INT(km)	PRO(km)	*IN*	*OUT*
CITY		STATE		<--	FILE #	LNG	HAAT(M)	COR(M)	LICENSEE	(Overlap in km)	
268C0	KCLS	CP	NCX	78.0	48.16	36 50 49.0	40.000	8.9	70.1	32.4	-23.0*
Leeds		UT		258.3	BPH20091016AEO	113 29 28.0	620	1985	Canyon Media Group, Llc		
264C	R10990	ADD	___	37.6	141.01	37 45 32.0	100.000	146.9	100.6	-12.8*	30.5
Enoch		UT		218.2		113 02 23.0	600	2526	Sanpete County Broad'g Co.		
268D	K268BH	LIC	_C_	0.0	0.00	36 45 30.0	0.220	1.0	6.9	-7.9*	-7.9*
Mesquite		NV		0.0	BLFT20070907ADF	114 01 10.0	-250	631	Canyon Media Group, Llc		
264D	633405	APP	_C_	15.4	45.70	37 09 19.0	0.010	28.5	17.0	7.4	15.0
Ivins		UT		195.5	BNPFT20030314BYZ	113 52 57.0	1002	2272	Brigham Young University		
266L1	KOEZ-LP	APP	___	49.3	52.21	37 03 49.0	0.100	13.7	9.8	31.7	32.6
St. George		UT		229.6	BPL20120202AAA	113 34 25.0	30	941	Latinos Unidos Broadcastin		
266C	R10990	ADD	___	265.7	175.14	36 37 24.0	100.000	131.8	88.2	32.3	71.3
Indian Springs		NV		84.5		115 58 19.0	600	1809	Sanpete County Broad'g Co.		
212C2	KSGU	LIC	_CX	78.0	48.16	36 50 49.0	2.000	42.5	38.4	15.0R	33.2M
St. George		UT		258.3	BLED20051107AED	113 29 28.0	555	1921	Nevada Public Radio		
263C	KXNT-FM	LIC	_CX	226.9	121.46	36 00 30.0	100.000	12.3	84.5	102.3	35.9
Henderson		NV		46.3	BMLH20070406ABM	115 00 20.0	357	1047	Cbs Radio Stations Inc.		
268D	K268BT	LIC	DV_	15.4	45.70	37 09 19.0	0.010	0.0	0.5	35.9	44.2
Shivwits		UT		195.5	BLFT20110811ABG	113 52 57.0		2361	Patricia J. Young		
263D	K215CF	APP	_C_	49.4	52.30	37 03 49.0	0.092	0.7	11.0	44.8	40.3
St. George		UT		229.6	BMJPFT20030310BJL	113 34 20.0	54	969	Utah State University Of A		
266C	KPKK	CP	ZHX	266.2	170.41	36 38 26.0	100.000	118.0	79.8	41.3	74.6
Amargosa Valley		NV		85.0	BPH20090427ABY	115 55 15.0	588	1797	Sky Media, L.L.C.		
265D	631791	APP	_V_	233.9	108.63	36 10 44.0	0.010	50.1	13.6	51.7	72.0
Moapa		NV		53.3	BNPFT20030310BIT	114 59 47.0	659	1243	Calvary Chapel Of Twin Fal		

Terrain database is NGDC 30 SEC , R= 73.215 qualifying spacings or FCC minimum Spacings in KM, M= Margin in KM
Contour distances are on direct line to and from reference station. Reference zone= , Co to 3rd adjacent.
Ant Column: (D= DA Standard, Z= DA 73.215, N= Not DA 73.215, _= Omni), Polarization (C,H,V,E), Beamtilt(Y,N,X)
"*"affixed to 'IN' or 'OUT' values = site inside protected contour.
« = Station meets FCC minimum distance spacing for its class.

Exhibit 3

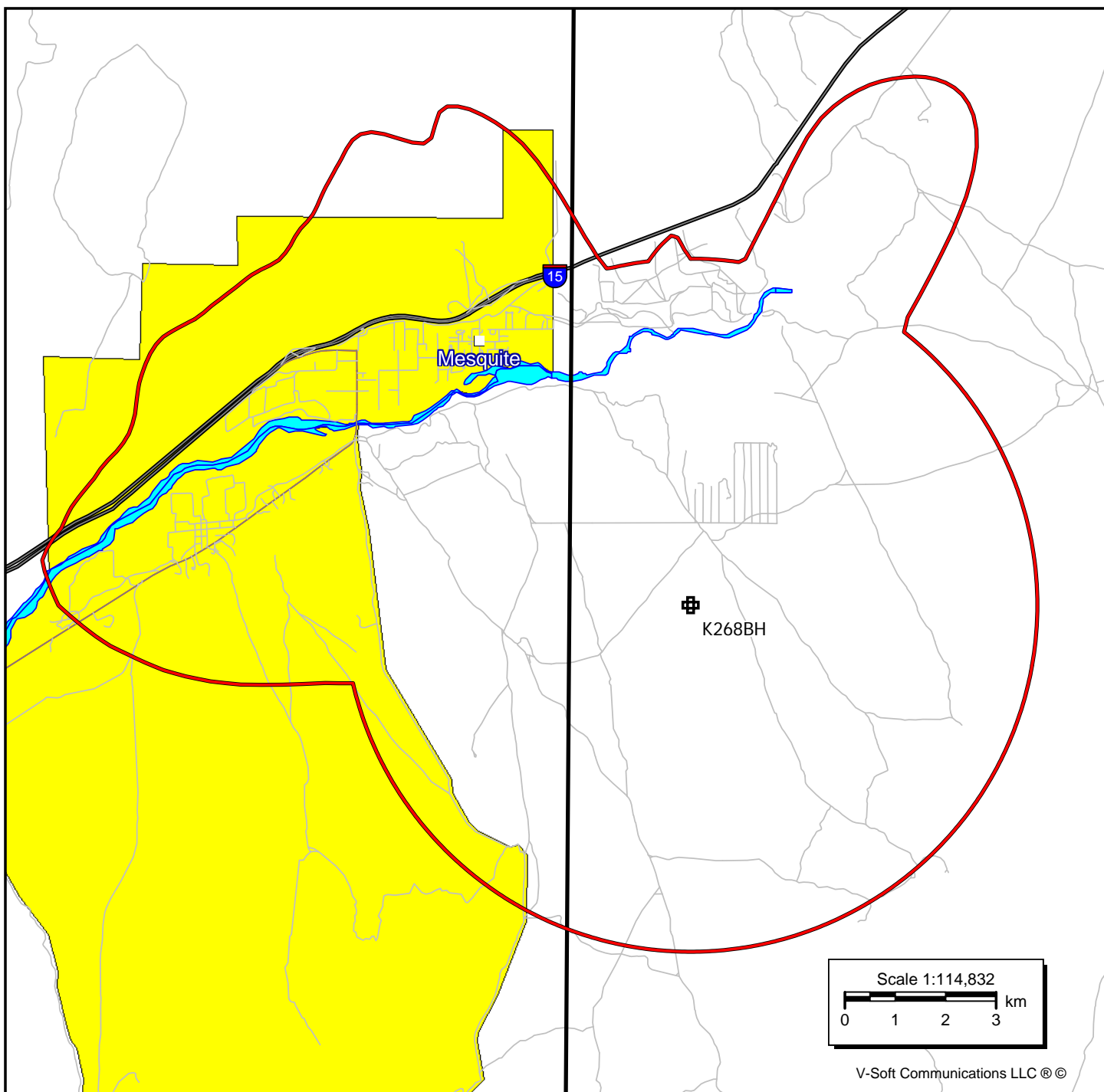
Section 74.1204 Interference Tabulations

K268BH on Displacement Channel 294 Section 74.1204 Contour Overlap Tabulations											
REFERENCE 36 45 30.0 N. 114 01 10.0 W.		CH#	294D	-	106.7 MHz, Pwr= 0.22 kW, HAAT= -249.5 M, COR= 631 M				DISPLAY DATES DATA 03-12-12 SEARCH 03-12-12		
Average Protected F(50-50)= 6.87 km Omni-directional											
CH CITY	CALL	TYPE STATE	ANT	AZI <--	DIST FILE #	LAT LNG	PWR(kW) HAAT(M)	INT(km) COR(M)	PRO(km) LICENSEE	*IN* (Overlap in km)	*OUT*
293C Las Vegas	KSNE-FM	LIC_CX NV		226.9 46.3	121.46 BMLH20110126ABC	36 00 30.0 115 00 20.0	100.000 352	125.9 1048	84.6 Citicasters Licenses, Inc.	-11.2*	27.0
297C2 St. George	KSNN	RSV-A UT	____	45.1 225.4	54.61	37 06 15.0 113 35 00.0	50.000 150	7.5 1106	60.7 Ccr-st. George Iv, Lic	40.3	-7.1*
291C2 St. George	KSNN	LIC_CX UT		78.0 258.3	48.16 BMLH20060918AHN	36 50 49.0 113 29 28.0	2.000 577	2.8 1939	39.4 Ccr-st. George Iv, Lic	38.5	7.7
297C2 St. George	KSNN	APP_CX UT		78.0 258.3	48.16 BPH20110822AED	36 50 49.0 113 29 28.0	2.000 568	2.8 1933	39.1 Ccr-st. George Iv, Lic	38.5	8.0
291C1 Colorado City	KXFF	RSV-A AZ	____	63.0 243.5	83.19	37 05 41.0 113 11 06.0	100.000 299	10.0 1680	71.8 Ccr-st. George Iv, Lic	66.3	10.4
297C1 Colorado City	KXFF	LIC_CX AZ		63.0 243.5	83.19 BLH20030313AXW	37 05 41.0 113 11 06.0	35.000 347	8.0 1728	64.8 Ccr-st. George Iv, Lic	68.4	17.4
291C1 Colorado City	KXFF	APP_CX AZ		63.0 243.5	83.19 BPH20110822AEI	37 05 41.0 113 11 06.0	35.000 347	8.0 1728	64.8 Ccr-st. George Iv, Lic	68.4	17.4
240C St. George	KZHK«	LIC NCX UT		78.0 258.3	48.16 BLH20100709AHC	36 50 49.0 113 29 28.0	100.000 595	93.1 1960	77.8 Marvin Kent Frandsen	28.5R	19.7M
295C1 Overton	KVGQ	LIC DH_ NV		296.0 115.7	53.11 BLH20110315AAG	36 57 59.2 114 33 21.2	100.000 289	21.3 1384	14.3 Kemp Communi cations, Inc.	20.4	22.2
295D Apex	KVGQ-FM1	LIC DC_ NV		241.3 60.7	97.61 BLFTB20110628ABI	36 20 01.0 114 58 27.0	20.000	65.0 1061	43.8 Kemp Communi cations, Inc.	25.8	44.0
293C1 Fredonia	R11560	ADD AZ	____	84.6 265.7	163.42	36 53 00.0 112 11 40.0	100.000 299	127.4 2210	85.5 Sanpete County Broad'g Co.	29.1	68.0
293C1 Fredonia	R11561	ADD AZ	____	84.6 265.7	163.42	36 53 00.0 112 11 40.0	100.000 299	127.4 2210	85.5 Smoke & Mirrors, Lic Et. A	29.1	68.0
293D Enterpri se	K293AF	LIC_VN UT		21.0 201.2	89.80 BLFT19950918TL	37 30 46.0 113 39 14.0	0.010 10	19.9 2207	12.9 Enterpri se Ci ty	59.0	61.5

Terrain database is NGDC 30 SEC , R= 73.215 qualifying spacings or FCC minimum Spacings in KM, M= Margin in KM
Contour distances are on direct line to and from reference station. Reference zone= , Co to 3rd adjacent.
Ant Column: (D= DA Standard, Z= DA 73.215, N= Not DA 73.215, _= Omni), Polarization (C,H,V,E), Beamtilt(Y,N,X)
"*"affixed to 'IN' or 'OUT' values = site inside protected contour.
« = Station meets FCC minimum distance spacing for its class.

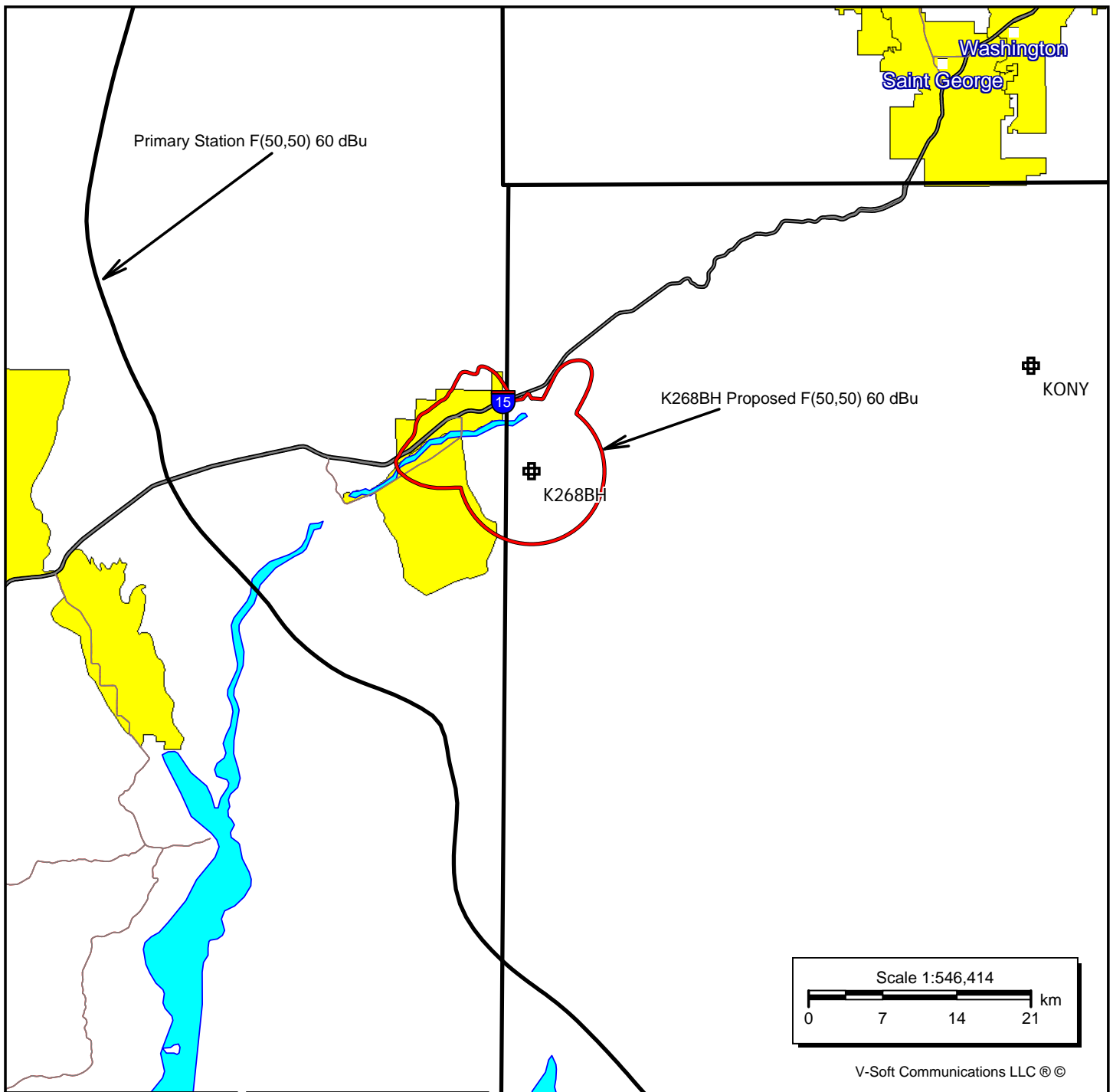
Exhibit 4

Contour Map



K268BH
(Proposed)
Channel: 294D
Frequency: 106.7 MHz
Latitude: 36-45-30 N
Longitude: 114-01-10 W
COR AGL Height: 12.0 m
COR AMSL Height: 636.0 m
Base Elevation: 624.0 m
COR HAAT: -245.22 m
ERP: 0.22 kW
Horiz. Pattern: Omni
Vert. Pattern: No
Prop Model: None

V-Soft Communications LLC ® ©

**K268BH**

(Proposed)
Channel: 294D
Frequency: 106.7 MHz
Latitude: 36-45-30 N
Longitude: 114-01-10 W
COR AGL Height: 12.0 m
COR AMSL Height: 636.0 m
Base Elevation: 624.0 m
COR HAAT: -245.22 m
ERP: 0.22 kW
Horiz. Pattern: Omni
Vert. Pattern: No
Prop Model: None

KONY

BMLH20020215ABJ
Channel: 260C
Frequency: 99.9 MHz
Latitude: 36-50-49 N
Longitude: 113-29-28 W
COR AGL Height: 95.0 m
COR AMSL Height: 1991.0 m
Base Elevation: 1896.0 m
COR HAAT: 626.0 m
ERP: 90.00 kW
Horiz. Pattern: Omni
Vert. Pattern: No
Prop Model: None