

Registration Detail

Reg Number	1200096	Status	Constructed
File Number	A0612906	Constructed	09/24/2001
FAA Study	2008-AGL-6138-OE	EMI	No
FAA Issue Date	10/23/2008	NEPA	No

Antenna Structure

Structure Type TOWER - Free standing or Guyed Structure used for Communications Purposes

Location (in NAD83 Coordinates)

Lat/Long 46-35-23.3 N 090-50-13.3 W Rte 2 Box 74A (Ashland #91399)
City, State Ashland , WI
Center of
AM Array

Heights (meters)

Elevation of Site Above Mean Sea Level	Overall Height Above Ground (AGL)
213.4	126.8
Overall Height Above Mean Sea Level	Overall Height Above Ground w/o Appurtenances
340.2	121.9

Painting and Lighting Specifications

FAA Chapters 4, 8, 12
Paint and Light in Accordance with FAA Circular Number 70/7460-1K
.

Owner & Contact Information

FRN	0005885231	Licensee ID	L00008376
-----	------------	-------------	-----------

Owner

American Towers, Inc. Attention To: FAA/FCC Compliance Dept. 1101 Perimeter Drive Schaumburg , IL 60173	P: (847)240-1508 E: ATCfaa-fccmidwest@americantower.com
--	--

Contact

Compliance Dept. , FAA/FCC 1101 Perimeter Drive Schaumburg , IL 60173 .	P: (847)240-1508 E: ATCfaa-fccmidwest@americantower.com
--	--

Last Action Status

Status	Constructed	Received	10/27/2008
Purpose	Notification	Entered	10/27/2008
Mode	Interactive		

Related Applications

10/27/2008	A0612905 - Modification (MD)
10/27/2008	A0612906 - Notification (NT)
08/07/2007	A0557349 - Modification (MD)
.	Related applications (14)

Comments

Exhibit 13.2

Vertical Plan of Antenna System

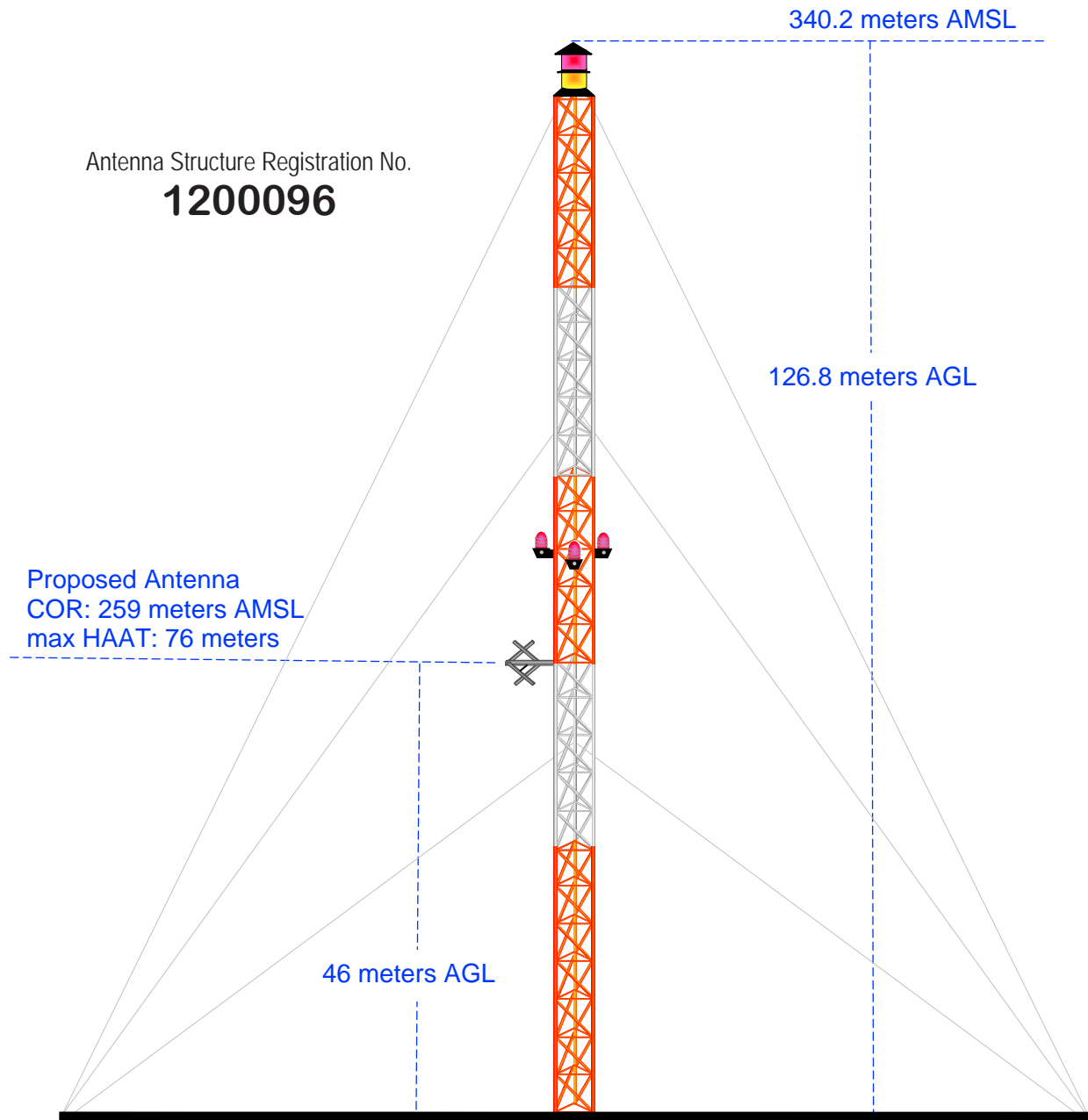
The site is located at Rte 2 Box 74A (Ashland #91399),
the city of Ashland, Ashland County, Wisconsin.

Site Location (NAD 27)

NL: 46° 35' 24"

WL: 90° 50' 13"

(46-35-23.3NL; 90-50-13.3WL NAD1983)



Ground Elevation = 213.4 m AMSL
Drawing is not to Scale

MUNN-REESE, INC.
Broadcast Engineering Consultants
Coldwater, MI 49036

Exhibit 13.3 Present vs. Proposed Service Contour Study

CH279D.short-form
Ashland, WI
BNPFT20030314CHL
Facility ID: 138668
Latitude: 46-36-28 N
Longitude: 090-50-12 W
ERP: 0.25 kW
Channel: 279D
Frequency: 103.7 MHz
AMSL Height: 238.0 m
Horiz. Pattern: Omni

60 dBμ Contour
Total Population: 8,464
Total Area: 200 sq. km

CH279D.long-form
Ashland, WI
Proposed Operation
Facility ID: 138668
Latitude: 46-35-24 N
Longitude: 090-50-13 W
ERP: 0.038 kW
Channel: 279D
Frequency: 103.7 MHz
AMSL Height: 259.0 m
Horiz. Pattern: Omni

60 dBμ Contour
Total Population: 7,826
Total Area: 97 sq. km

Short-Form 60 dBμ F(50:50) Contour

Long-Form 60 dBμ F(50:50) Contour

+ CH279D.short-form

+ CH279D.long-form

Washburn

Ashland

Odanah



USGS 03 SEC Terrain Database
U.S. Census 2010 PL Database

Terrain
183 386 m

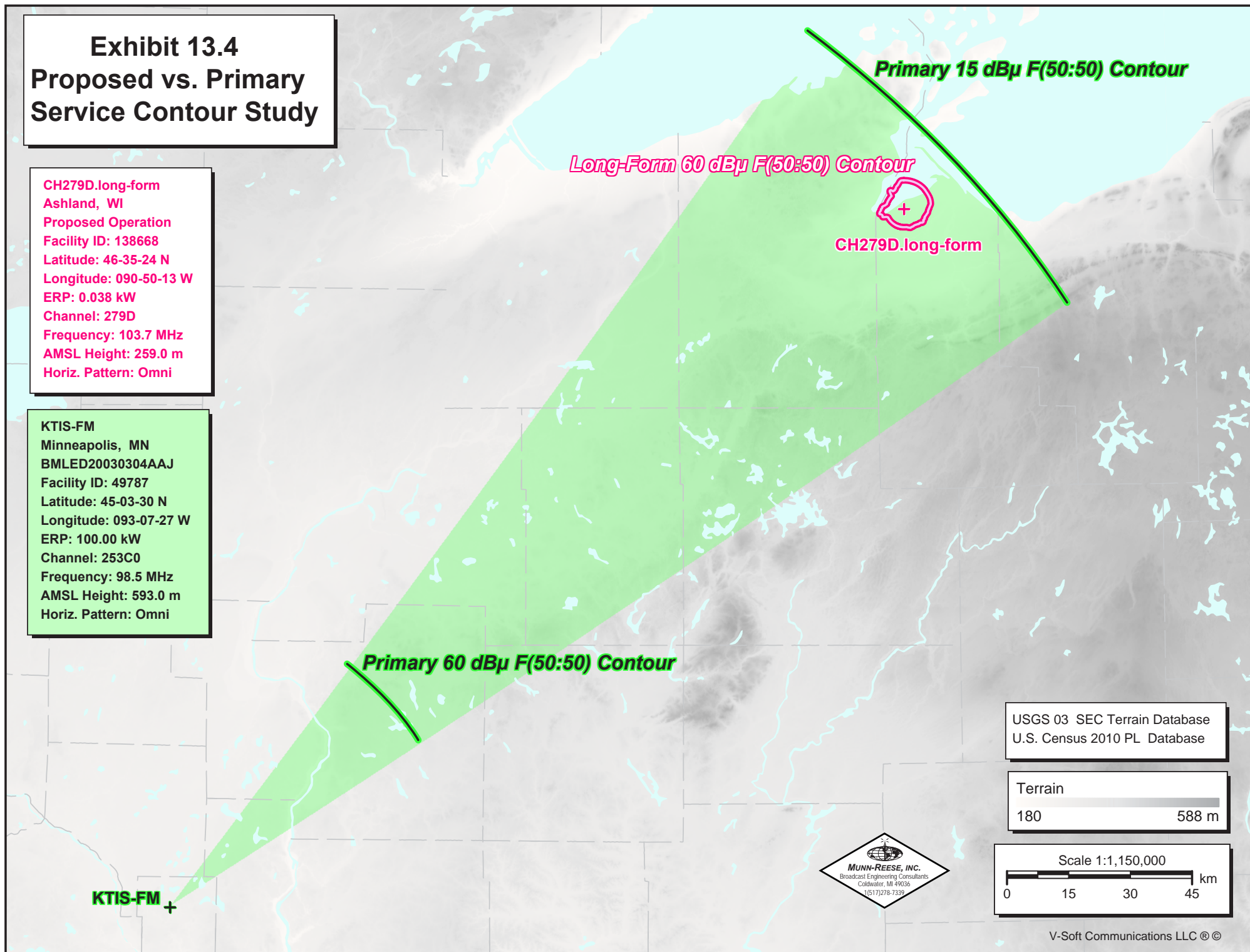
Scale 1:100,000



Exhibit 13.4 Proposed vs. Primary Service Contour Study

CH279D.long-form
Ashland, WI
Proposed Operation
Facility ID: 138668
Latitude: 46-35-24 N
Longitude: 090-50-13 W
ERP: 0.038 kW
Channel: 279D
Frequency: 103.7 MHz
AMSL Height: 259.0 m
Horiz. Pattern: Omni

KTIS-FM
Minneapolis, MN
BMLED20030304AAJ
Facility ID: 49787
Latitude: 45-03-30 N
Longitude: 093-07-27 W
ERP: 100.00 kW
Channel: 253C0
Frequency: 98.5 MHz
AMSL Height: 593.0 m
Horiz. Pattern: Omni



USGS 03 SEC Terrain Database
U.S. Census 2010 PL Database

Terrain
180 588 m

Scale 1:1,150,000
0 15 30 45 km



Exhibit 13.5

Tabulation of Proposed Allocation Study

Northwestern College REFERENCE CH# 279D - 103.7 MHz, Pwr= 0.038 kW, HAAT= 44.4 M, COR= 259 M 46 35 24.0 N. Average Protected F(50-50)= 5.38 km 90 50 13.0 W. Omni-directional DISPLAY DATES DATA 03-19-13 SEARCH 03-19-13											
CH CITY	CALL	TYPE STATE	ANT AZI <--	DIST FILE #	LAT LNG	PWR(kW) HAAT(M)	INT(km) COR(M)	PRO(km) LICENSEE	*IN* (Overlap in km)	*OUT*	
279D Ashland	629257	APP WI	C_ 0.6 180.6	1.97 BNPFT20030314CHL	46 36 28.0 90 50 12.0	0.250 29	23.8 238	7.1 Northwestern College	-28.8*<	-28.5*<	
279C1 Hallie	WWIB	LIC WI	C_ 188.7 8.5	167.31 BLH20000207ABP	45 06 07.0 91 09 33.0	100.000 207	162.7 534	64.5 Stewards Of Sound, Inc.	0.3	88.8	
277C1 Duluth	KUMD-FM	LIC MN	CX 283.4 102.4	100.57 BMLED20080826AAE	46 47 31.0 92 07 21.0	95.000 250	11.2 565	77.9 Regents Of University Of M	84.8	22.2	
282C2 Two Harbors	KZIO	LIC MN	NCN 294.5 113.7	95.59 BLH19960321KD	46 56 28.0 91 58 58.0	50.000 121	7.6 470	61.2 Red Rock Radio Corp.	83.7	34.0	
280D Ironwood	W280DD	LIC MI	CN 102.9 283.4	54.15 BLFT19990608UC	46 28 45.0 90 08 51.0	0.010 131	10.9 543	7.6 Gospel Opportunities, Inc.	37.7	38.6	
Translator for WHWL, Marquette, MI-Amended 971229											
280D Silver Bay	W280AA	LIC MN	DHN 336.2 155.9	85.06 BLFT249	47 17 21.0 91 17 31.0	0.117 18	4.3 323	2.8 Refuge Media Group (new Bo	75.6	74.9	
TRANSLATOR FOR WAKX-FM, DULUTH, MN.											
280D Minoqua	W280DT	LIC WI	C_ 133.9 314.7	111.59 BLFT20070725AAB	45 53 20.0 89 47 54.0	0.250 27	10.1 513	7.1 Radio 74 International e	96.4	97.4	
282C1 Baraga	WVCN	LIC MI	CX 86.6 268.4	187.38 BMLED20021230AAC	46 39 50.0 88 23 06.0	100.000 262	10.0 699	71.6 Keweenaw Bay Broadcasting,	171.2	115.3	
281C2 Merri	WMZK	LIC WI	NCN 151.9 332.7	186.56 BLH19981013KK	45 06 14.0 89 43 05.0	24.000 188	5.4 600	49.6 Qui cksilver Broadcasting,	176.4	136.5	
One-step application from channel 281C3											
278L1 Clearwater Lake	WCWL-LP	LIC WI	___ 122.1 303.3	150.74 BLL20090309ABH	45 51 28.0 89 11 15.0	0.096 30	8.2 534	5.8 Northern Lakes Radio, Inc.	136.9	137.1	
279C1 Bemidji	KKBj-FM	LIC MN	CX 291.1 108.2	318.75 BLH20030825AFX	47 33 21.0 94 48 04.0	100.000 146	156.2 566	59.5 R. p. Broadcasting, Inc.	158.2	245.3	
276A Crandon	AU9412199	VAC WI	___ 126.4 307.8	187.52 RMrfS244	45 34 18.0 88 53 54.0	6.000 100	2.7 605	27.8 Fcc	179.3	159.3	

Terrain database is USGS 03 SEC , R= 73.215 qualifying spacings or FCC minimum Spacings in KM, M= Margin in KM
 Contour distances are on direct line to and from reference station. Reference zone= East Zone, Co to 3rd adjacent.
 All separation margins (if shown) include rounding
 Ant Column: (D= DA Standard, Z= DA 73.215, N= Not DA 73.215, _= Omni), Polarization (C,H,V,E), Beamtilt(Y,N,X)
 ""affixed to 'IN' or 'OUT' values = site inside protected contour.
 < = Contour Overlap

Blue Highlighted Text denotes the BNPFT-20030314CHL - Ashland, WI, facility to be modified by this Form 349 filing. This facility need not be protected.