

EXHIBIT 3

Waiver Request of Section 74.1204
Farmington, NM K203EB 16 Watts ERP
Minor Change /Lower AGL
And Decrease in ERP
Calvary Chapel of Twin Falls, Inc.
January 2012

The proposed site is contained entirely inside the service contour of second-adjacent FM Stations KUSW Flora Visa and KNMI Farmington, NM.

KISW

The proposed site is contained entirely inside the service contour of second-adjacent FM Station KUSW, 201C3, 4.1kW, Flora Vista. The level of least arriving protected F(50,50) signal at the proposed transmitter site is 106.7-dBu. Using the U/Desired method for calculating proposed interference, the interfering contour is 146.7-dBu (free-space contour method employed). The interfering signal would, in the worst case at the maximum radial, extend 1 meters or 4 feet from the center of radiation, which is proposed at meters 16 meters AGL. This interference contour doesn't touch the ground and there are no structures close enough to puncture the interference contour which is located 50 feet above ground. Attached is a portion of the USGS Farmington South (NM) which shows that this tower is not in a populated area. Because there are no residences, businesses or major roads that are located within this interference contour, Calvary Chapel of Twin Falls, Inc. respectfully requests a waiver of the FM translator contour overlap regulations with respect to second-adjacent FM Station KUSW.

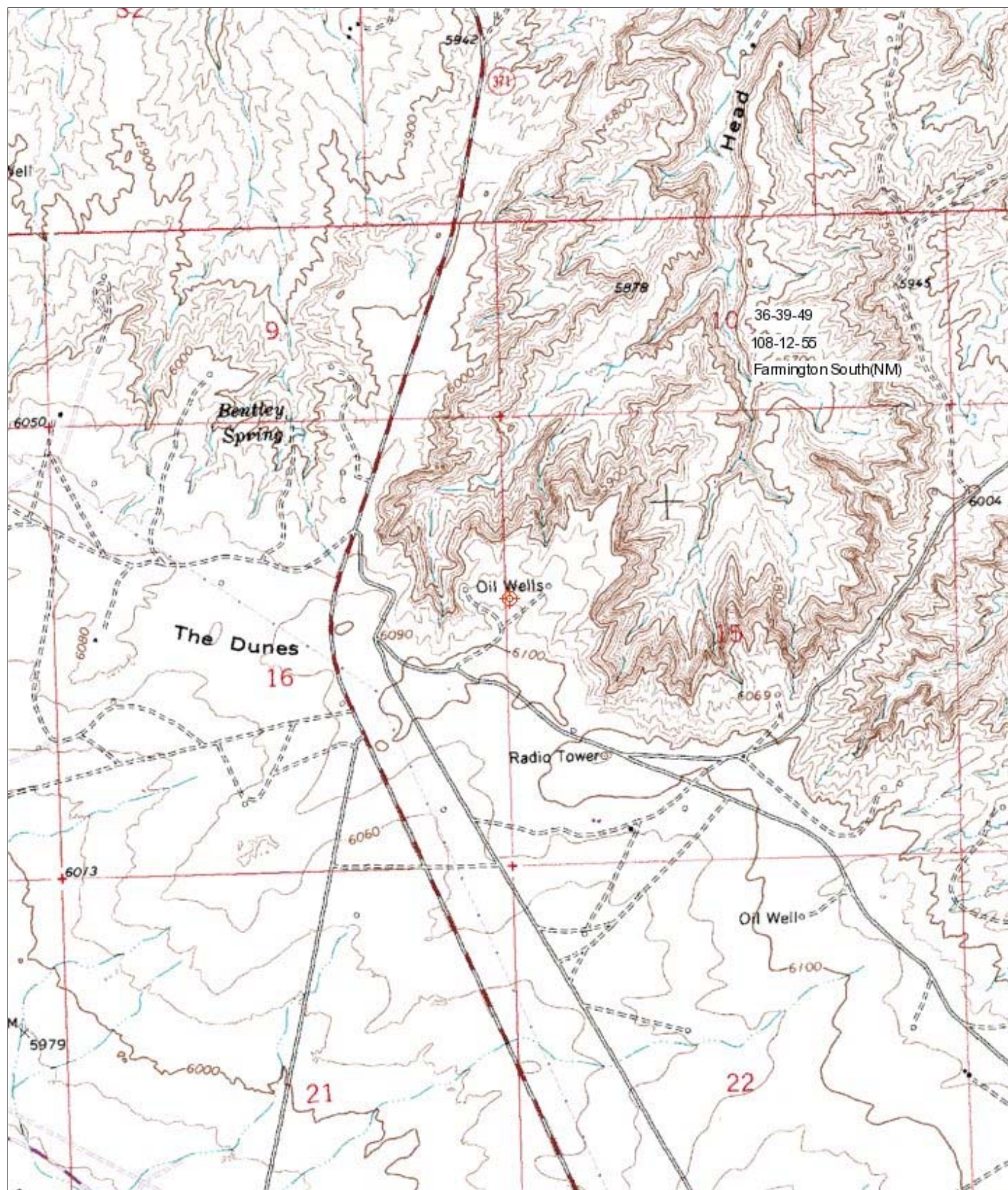
KNMI

The proposed site is contained entirely inside the service contour of second-adjacent FM Station KNMI, 205C2, 27kW, Farmington. The level of least arriving protected F(50,50) signal at the proposed transmitter site is 111-dBu. Using the U/Desired method for calculating proposed interference, the interfering contour is 151-dBu (free-space contour method employed). The interfering signal would, in the worst case at the maximum radial, extend 1 meters or 3 feet from the center of radiation, which is proposed at meters 16 meters AGL. This interference contour doesn't touch the ground and there are no structures close enough to puncture the interference contour which is located approximately 15 meters above ground. Attached is a portion of the USGS Farmington South (NM) which shows that this tower is not in a populated area. Because there are no residences, businesses or major roads that are located within this interference contour, Calvary Chapel of Twin Falls, Inc. respectfully requests a waiver of the FM translator contour overlap regulations with respect to second-adjacent FM Station KNMI.

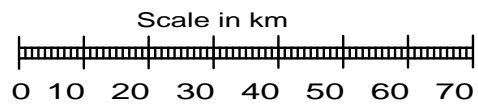
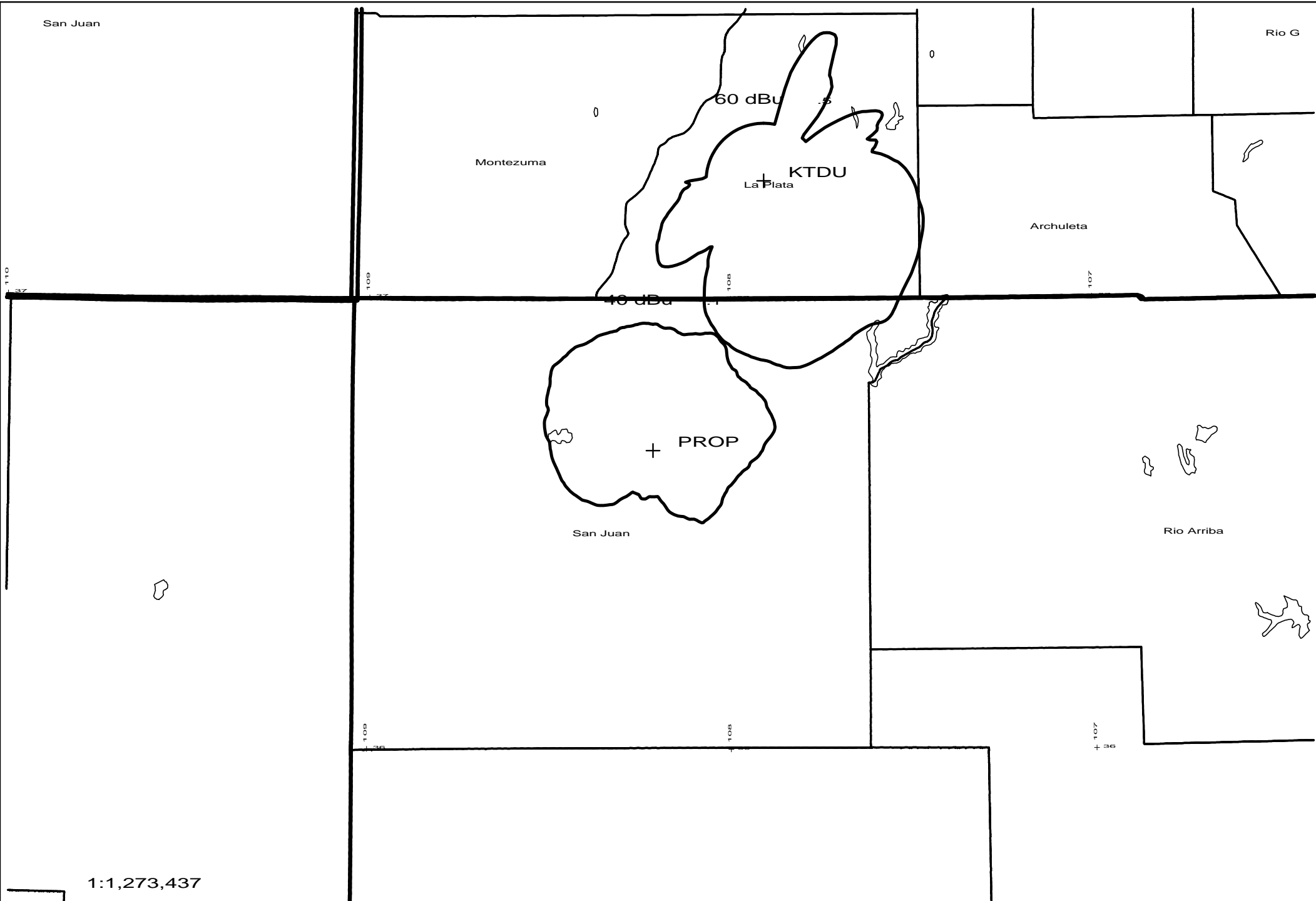
Calvary Chapel of Twin Falls, Inc.

Farmington, NM K203EB											
Calvary Chapel Of Twin Falls, Inc.											
REFERENCE		CH# 203D - 88.5		MHz, Pwr= 0.016 kW,		HAAT= 143.0 M,		COR= 1869 M		DISPLAY DATES	
36 39 49.0 N.				Average Protected F(50-50)= 7.78 km						DATA 01-18-12	
108 12 55.0 W.				Omni-directional						SEARCH 01-25-12	
CH	CALL	TYPE	ANT	AZI	DIST	LAT	PWR(kW)	INT(km)	PRO(km)	*IN*	*OUT*
CITY		STATE		<--	FILE #	LNG	HAAT(M)	COR(M)	LICENSEE	(Overlap in km)	
203D	K203EB	LIC_C_		0.0	0.0	36 39 49.0	0.025	35.4	10.6	-44.7*	-41.8*
Farmington		NM		0.0	BLFT20021022AAX	108 12 55.0	143	1875	Calvary Chapel Of Twin Fal		
205C2	KNMI	LIC_DVX		299.7	1.7	36 40 16.0	27.000	3.9	38.7	-11.1*	-37.3*
Farmington		NM		119.7	BLED20080319ABB	108 13 54.0	202	1925	Navajo Ministries, Inc.		
203A	KTDU	LIC_VX		22.3	71.9	37 15 43.0	4.000	95.7	36.2	-33.2*	4.6
Durango		CO		202.5	BLED20080606AAS	107 54 24.0	113	2380	Educational Communications		
201C3	KUSW	LIC_VX		299.7	1.7	36 40 16.0	4.100	2.9	30.8	-10.1*	-29.4*
Flora Vista		NM		119.7	BLED20080204AAE	108 13 54.0	202	1925	Kute, Inc.		
06NT	K06NK	LI_D_N		290.8	156.2	37 09 00.0	0.005	8.1	1.8	9.8R	146.3M
Mexican Hat		UT		109.8	BLTTV20050829ADA	109 51 34.0	-71	1288	San Juan County		
204C1	1273924	APP_DCX		160.3	166.4	35 15 04.0	3.200	99.4	67.1	61.8	92.0
Milan		NM		340.6	BNPED20071022BPX	107 35 44.0	845	3377	Board Of Regents Of New Me		
204C1	1391102	APP_DCX		160.3	166.2	35 15 10.0	3.200	99.0	66.9	62.0	92.0
Tohajiilee Indian		R NM		340.6	BNPED20071018BAR	107 35 46.0	823	3358	Availabl e Medi a, Inc.		
06+T	K06JF	LI_D_N		357.7	73.5	37 19 32.0	1.155	8.1	1.8	9.8R	63.7M
Cortez		CO		177.7	BLTTV20051114ANJ	108 14 55.0	613	2700	Lin Of Col orado, LI c		
203A	KPKJ	LIC_CX		213.4	146.5	35 33 36.0	1.450	76.6	26.0	65.3	106.2
Mentmore		NM		32.9	BLED20090521ADF	109 06 30.0	149	2294	Calvary Chapel Of Albuquer		
06 D	K06NT-D	LI_D_N		343.0	93.2	37 28 00.0	0.005	13.4	0.7	14.1R	79.2M
Dolores		CO		162.9	BLDTV20110329ADC	108 31 25.7	278	2178	Southwest Colorado Tv Tran		
06NT	K06MM	LI_DHN		299.9	137.3	37 16 12.0	0.002	7.6	1.7	9.3R	128.0M
Bluff		UT		119.1	BLTTV19940114JK	109 33 32.0	108	1437	San Juan County		

Terrain database is USGS 03 SEC , R= 73.215 qualifying spacings or FCC minimum Spacings in KM, M= Margin in KM
 Contour distances are on direct line to and from reference station. Reference zone= , Co to 3rd adjacent.
 Ant Column: (D= DA Standard, Z= DA 73.215, N= Not DA 73.215, _= Omni), Polarization (C,H,V,E), Beamtilt(Y,N,X)
 "*"affixed to 'IN' or 'OUT' values = site inside protected contour.



0 0.5 Mi
0 2000 Ft



PROP 203D .016kW 1869M AMSL
N. Lat. 36 39 49 W. Lng. 108 12 55

PROP vs KTDU
CCTF - 01/12

Bu

.1

10

37

