

TECHNICAL EXHIBIT  
STA REQUEST  
STATION KTVU-DT  
OAKLAND, CALIFORNIA  
CH 44 850 KW (MAX-DA) 446 M

Technical Narrative

This Technical Exhibit supports a request for Special Temporary Authority (STA) for digital television (DTV) station KTVU-DT at Oakland, California. This request contemplates an 850 kW STA request. The STA request is for digital television operation on KTVU-DT's post-transition DTV channel 44 at Oakland employing one of *Sutro Tower's* master antenna systems. The master antenna system to be used is also employed by KRON-DT on Channel 38 post-transition assigned to San Francisco.

850 kW STA Application

Station KTVU-DT proposes to operate on DTV channel 44 from its authorized post-transition DTV transmitter site (*Sutro Tower*). The antenna height above average terrain for the channel 44 DTV operation is 446 meters. The proposed directional ERP level of 850 kilowatts will not result in the herein proposed noise-limited contour extending beyond its pending DTV maximization application (BMPCDT-20080619AIJ) in any azimuthal direction.

The proposed DTV transmitter site will be located at its authorized post-transition DTV transmitter site. Therefore, the proposed site location is:

37° 45' 19" North Latitude  
122° 27' 06" West Longitude

A sketch of antenna and pertinent elevations are included as Figure 1.

Figure 2 is a map showing the DTV predicted coverage contour and the associated construction permit coverage contour. The extent of the contour has been calculated using the normal FCC prediction method. The Oakland city limits were derived from information contained in the 2000 U.S. Census of Population and Housing.

#### Population Served

The herein proposed 850 kW KTVU-DT facility is predicted to serve 6,414,055 persons, post-transition, based upon the 2000 Census. KTVU-DT's associated Appendix B allotment facility is predicted to serve 6,336,000 persons. Therefore, the herein proposed KTVU-DT STA facility would serve over 100%, post-transition, of KTVU-DT's final Appendix B allotment.

---

Allocation Considerations

The proposed KTVU-DT operation meets the FCC's interference standards to pertinent DTV Appendix B allotments using the procedures outlined in the FCC's OET-69 Bulletin and a 2 kilometer grid cell size.

Radiofrequency Electromagnetic Field Exposure

The proposed KTVU(DT) facilities were evaluated in terms of potential radiofrequency electromagnetic field exposure at ground level to workers and the general public. The radiation center for the proposed KTVU(DT) antenna is located 288.4 meters above ground level. The maximum effective radiated power is 850 kilowatts. A "worst case" downward relative field value of 0.25 is assumed for the antenna's downward radiation. The calculated power density at a point 2 meters above ground level is  $0.01 \text{ mW/cm}^2$ . This is less than 5 percent of the Commission's recommended limit of  $0.435 \text{ mW/cm}^2$  for channel 44 for an "uncontrolled" environment.

Access to the transmitting site is restricted and appropriately marked with warning signs. As this will be a multi-user site an agreement between the stations will control access. In the event that workers or other authorized personnel enter restricted areas or climb the tower, appropriate measures will be taken to assure worker safety with respect to radio frequency radiation exposure. Such measures include reducing the average exposure by spreading out the work over a longer period of time, wearing "accepted" RFR protective clothing and/or RFR

exposure monitors or scheduling work when the stations are at reduced power or shut down. The proposed KTVU(DT) operation appears to be otherwise categorically excluded from environmental processing.

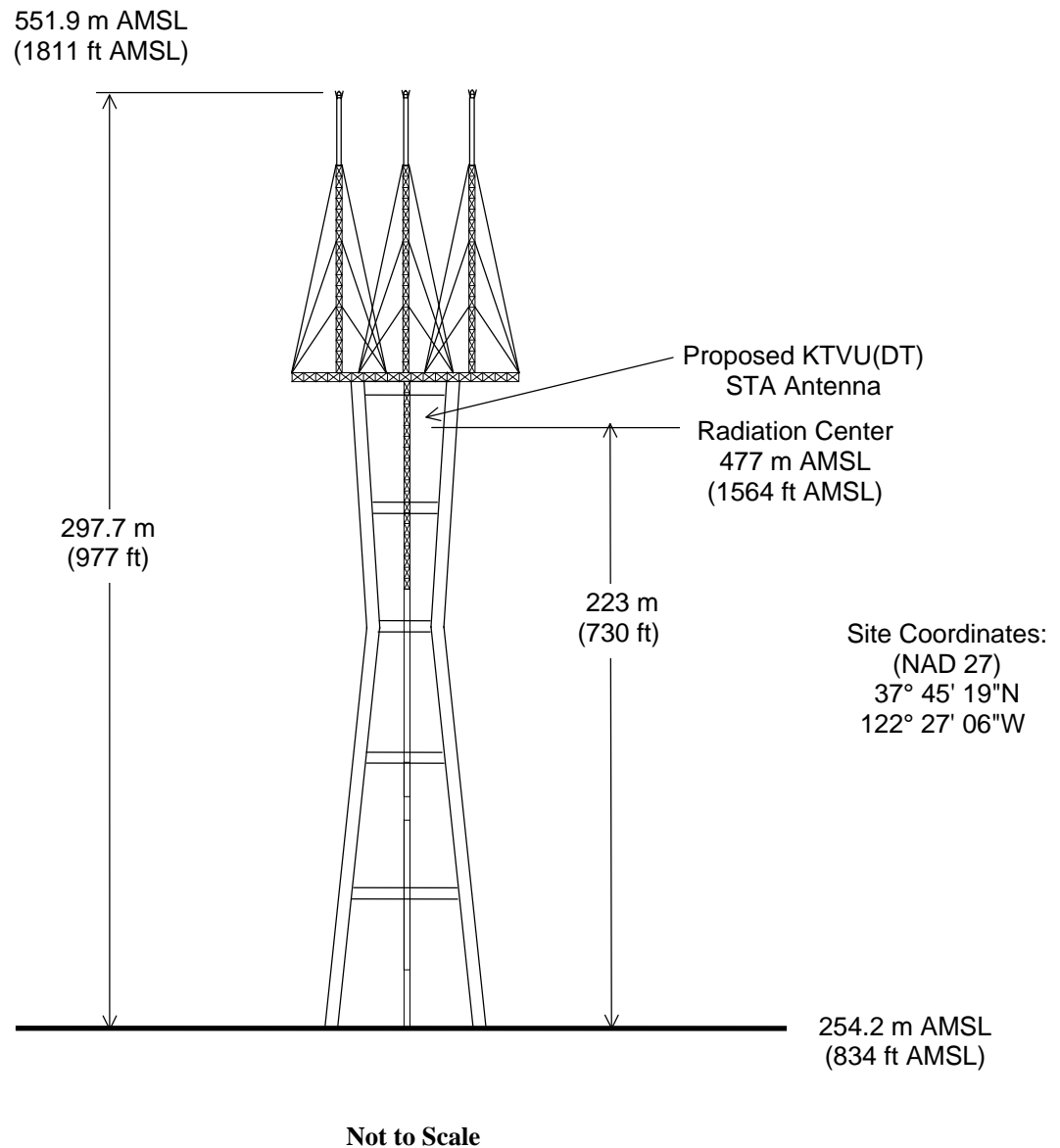
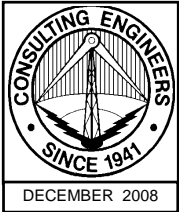
It is noted that this statement only addresses the potential for radiofrequency electromagnetic field exposure. All other aspects of the environmental processing analysis will be or already have been provided to the FCC by the tower owner.

Charles Cooper

du Treil, Lundin & Rackley, Inc.  
201 Fletcher Avenue  
Sarasota, Florida 32437  
941.329.6000

December 3, 2008

ASRN: 1001289



## PROPOSED ANTENNA AND SUPPORTING STRUCTURE

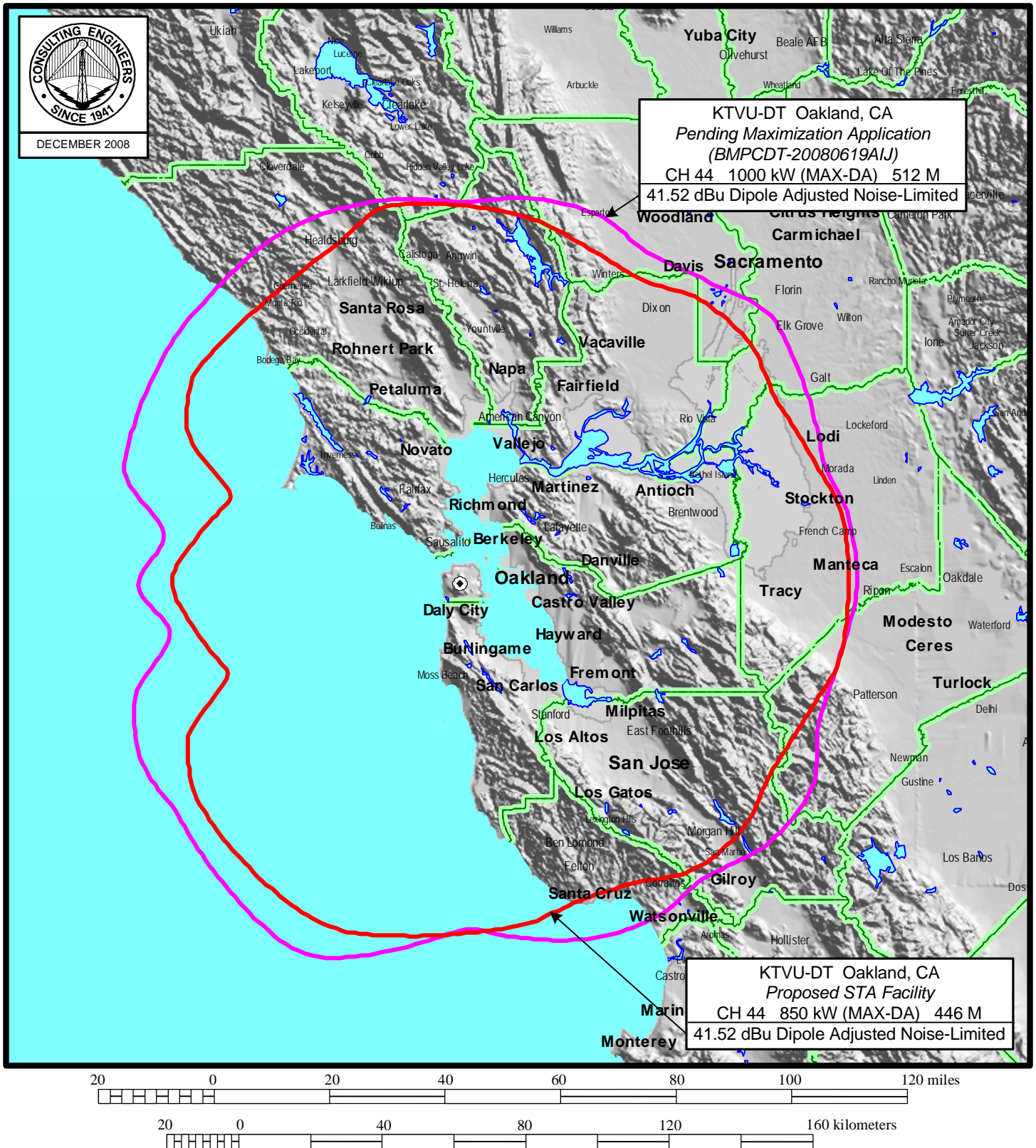
STATION KTVU(DT) – POST TRANSITION STA FACILITY

OAKLAND, CALIFORNIA

CH 44 850 KW (MAX-DA) 446 M

du Treil, Lundin & Rackley, Inc. Sarasota, Florida

Figure 2



**PREDICTED COVERAGE CONTOURS**  
STATION KTVU(DT) - PROPOSED STA FACILITY  
OAKLAND, CALIFORNIA  
CH 44 850 KW (MAX-DA) 446 M  
du Treil, Lundin & Rackley, Inc Sarasota, Florida

TECHNICAL EXHIBIT  
STA REQUEST  
STATION KTVU(DT)  
OAKLAND, CALIFORNIA  
CH 44      850 KW (MAX-DA)      446 M

OET-69 Post-Transition Interference Analysis

TW Census data selected 2000  
Post Transition Data Base Selected /export/home/cdbs/pt\_tvdb.sff

TV INTERFERENCE and SPACING ANALYSIS PROGRAM

Date: 12-02-2008      Time: 15:33:18

Record Selected for Analysis

KTVU      USERRECORD-01      OAKLAND      CA US  
Channel 44 ERP 850.      kW      HAAT 451. m      RCAMSL 00477 m  
Latitude 037-45-19      Longitude 0122-27-06  
Status APP      Zone 2      Border  
Dir Antenna Make CDB      Model 00000000027801      Beam tilt N      Ref Azimuth 0.  
Last update      Cutoff date      Docket  
Comments  
Applicant

Cell Size for Service Analysis 2.0 km/side

Distance Increments for Longley-Rice Analysis 1.00 km

Facility does not meet maximum height/power limits  
Channel 44      ERP = 850.00      HAAT = 451.

Azimuth (Deg)	ERP (kW)	HAAT (m)	41.0 dBu F(50,90) (km)
0.0	697.711	451.6	107.1
45.0	607.640	462.0	106.6
90.0	843.214	465.9	110.2
135.0	608.359	458.7	106.3
180.0	694.634	359.8	99.4
225.0	238.765	468.5	98.2
270.0	23.423	471.0	81.2
315.0	224.567	470.6	97.8

Evaluation toward Class A Stations

No Spacing violations or contour overlap to Class A stations

Class A Evaluation Complete

SPACING VIOLATION FOUND BETWEEN STATION

KTVU      44 OAKLAND      CA USERRECORD01

and station

SHORT TO: KICU-TV 36 SAN JOSE      CA BLCT      19881116KE  
037-29-17 0121-51-59  
Req. separation => 24.1 <= 96.6 Actual separation 59.6 Short 37.0( 35.5) km

Figure 3

SHORT TO: KTNC-TV 42 CONCORD CA BLCT 19830630KF  
 037-53-34 0121-53-53  
 Req. separation => 24.1 <= 96.6 Actual separation 51.1 Short 45.5( 27.0) km

SHORT TO: KTVU 44 OAKLAND CA DTVPLN DTVP1566  
 37-45-19 122-27-06  
 Req. separation 223.7 Actual separation 0.0 Short 223.7 km

SHORT TO: KBCW 44 SAN FRANCISCO CA BLCT 19881220KG  
 037-45-20 0122-27- 5  
 Req. separation 244.6 Actual separation 0.0 Short 244.6 km

SHORT TO: KSTS 48 SAN JOSE CA BPCT 20001215ABL  
 037-29-57 0121-52-16  
 Req. separation => 24.1 <= 96.6 Actual separation 58.6 Short 38.0( 34.5) km

SHORT TO: KSTS 48 SAN JOSE CA BLCT 19990721KE  
 037-29-57 0121-52-16  
 Req. separation => 24.1 <= 96.6 Actual separation 58.6 Short 38.0( 34.5) km

LANDMOBILE SPACING VIOLATIONS FOUND

NONE

Proposed facility OK to FCC Monitoring Stations

Proposed facility OK toward West Virginia quiet zone

Proposed facility OK toward Table Mountain

Proposed facility is beyond the Canadian coordination distance

Proposed facility is beyond the Mexican coordination distance

Proposed station is OK toward AM broadcast stations

\*\*\*\*\*  
 Start of Interference Analysis

Channel	Proposed Station Call City/State	ARN
44	KTVU OAKLAND CA	USERRECORD01

Stations Potentially Affected by Proposed Station

Chan	Call	City/State	Dist(km)	Status	Application	Ref. No.
43	NEW	SACRAMENTO CA	136.6	APP	BNPEDT	-20030922AFV
43	NEW	SACRAMENTO CA	170.0	APP	BNPEDT	-20030922AFW
43	KCSM-TV	SAN MATEO CA	0.0	CP	BPEDT	-20080825AAV
43	KCSM-TV	SAN MATEO CA	0.0	PLN	DTVPLN	-DTV1529
43	KCSM-TV	SAN MATEO CA	0.0	LIC	BLEDT	-20030822AFZ
44	KRXI-TV	RENO NV	299.3	APP	BPCDT	-20080619AIG
44	KRXI-TV	RENO NV	299.3	PLN	DTVPLN	-DTV1588
44	KRXI-TV	RENO NV	299.3	LIC	BLCDT	-20060707ACZ
45	KBCW	SAN FRANCISCO CA	0.0	CP	BPCDT	-20080603AAH
45	KBCW	SAN FRANCISCO CA	0.0	PLN	DTVPLN	-DTV1605
45	KBCW	SAN FRANCISCO CA	0.0	LIC	BLCDT	-20020709AAQ
46	K46DR	LAKEPORT CA	102.6	APP	BSTA	-20061016ADK
46	K46DR	LAKEPORT CA	139.9	LIC	BLTT	-19941103IB

%%%

Analysis of Interference to Affected Station 1

Channel	Call	City/State	Application	Ref. No.
43	NEW	SACRAMENTO CA	BNPEDT	-20030922AFV

Stations Potentially Affecting This Station



Figure 3

Chan	Call	City/State	Dist(km)	Status	Application	Ref. No.
43	KHSL-TV	CHICO CA	174.4	CP	BPCDT	-20070124AKD
43	KHSL-TV	CHICO CA	174.4	PLN	DTVPLN	-DTVP1526
43	KHSL-TV	CHICO CA	174.4	LIC	BLCDDT	-20060315AEZ
43	KGMC	CLOVIS CA	215.6	CP MOD	BMPCDDT	-20080620AAE
43	KGMC	CLOVIS CA	251.4	PLN	DTVPLN	-DTVP1527
43	KCSM-TV	SAN MATEO CA	136.6	CP	BPEDT	-20080825AAV
43	KCSM-TV	SAN MATEO CA	136.6	PLN	DTVPLN	-DTVP1529
43	KCSM-TV	SAN MATEO CA	136.6	LIC	BLEDT	-20030822AFZ
44	KTVU	OAKLAND CA	136.6	PLN	DTVPLN	-DTVP1566
44	KRXI-TV	RENO NV	165.7	APP	BPCDDT	-20080619AIG
44	KRXI-TV	RENO NV	165.7	PLN	DTVPLN	-DTVP1588
44	KRXI-TV	RENO NV	165.7	LIC	BLCDDT	-20060707ACZ
44	KTVU	OAKLAND CA	136.6	APP	USERRECORD-01	

Proposal causes no interference

#####

#### Analysis of Interference to Affected Station 2

##### Analysis of current record

Channel	Call	City/State	Application	Ref. No.
43	NEW	SACRAMENTO CA	BNPEDT	-20030922AFW

##### Stations Potentially Affecting This Station

Chan	Call	City/State	Dist(km)	Status	Application	Ref. No.
43	KHSL-TV	CHICO CA	165.0	CP	BPCDDT	-20070124AKD
43	KHSL-TV	CHICO CA	165.0	PLN	DTVPLN	-DTVP1526
43	KHSL-TV	CHICO CA	165.0	LIC	BLCDDT	-20060315AEZ
43	KGMC	CLOVIS CA	213.4	CP MOD	BMPCDDT	-20080620AAE
43	KGMC	CLOVIS CA	251.0	PLN	DTVPLN	-DTVP1527
43	KCSM-TV	SAN MATEO CA	170.0	CP	BPEDT	-20080825AAV
43	KCSM-TV	SAN MATEO CA	170.0	PLN	DTVPLN	-DTVP1529
43	KCSM-TV	SAN MATEO CA	170.0	LIC	BLEDT	-20030822AFZ
44	KTVU	OAKLAND CA	170.0	PLN	DTVPLN	-DTVP1566
44	KRXI-TV	RENO NV	133.4	APP	BPCDDT	-20080619AIG
44	KRXI-TV	RENO NV	133.4	PLN	DTVPLN	-DTVP1588
44	KRXI-TV	RENO NV	133.4	LIC	BLCDDT	-20060707ACZ
44	KTVU	OAKLAND CA	170.0	APP	USERRECORD-01	

Proposal causes no interference

#####

#### Analysis of Interference to Affected Station 3

##### Analysis of current record

Channel	Call	City/State	Application	Ref. No.
43	KCSM-TV	SAN MATEO CA	BPEDT	-20080825AAV

##### Stations Potentially Affecting This Station

Chan	Call	City/State	Dist(km)	Status	Application	Ref. No.
43	KHSL-TV	CHICO CA	253.0	CP	BPCDDT	-20070124AKD
43	KHSL-TV	CHICO CA	253.1	PLN	DTVPLN	-DTVP1526
43	KHSL-TV	CHICO CA	253.0	LIC	BLCDDT	-20060315AEZ
43	KGMC	CLOVIS CA	277.2	CP MOD	BMPCDDT	-20080620AAE
43	KGMC	CLOVIS CA	302.0	PLN	DTVPLN	-DTVP1527
43	NEW	SACRAMENTO CA	136.6	APP	BNPEDT	-20030922AFV
43	NEW	SACRAMENTO CA	170.0	APP	BNPEDT	-20030922AFW
44	KTVU	OAKLAND CA	0.0	PLN	DTVPLN	-DTVP1566
44	KTVU	OAKLAND CA	0.0	APP	USERRECORD-01	

Proposal causes no interference

#####

#### Analysis of Interference to Affected Station 4

##### Analysis of current record

Channel	Call	City/State	Application	Ref. No.
43	KCSM-TV	SAN MATEO CA	DTVPLN	-DTVP1529

##### Stations Potentially Affecting This Station

Figure 3

Chan	Call	City/State	Dist(km)	Status	Application	Ref. No.
43	KHSL-TV	CHICO CA	253.0	CP	BPCDT	-20070124AKD
43	KHSL-TV	CHICO CA	253.1	PLN	DTVPLN	-DTVP1526
43	KHSL-TV	CHICO CA	253.0	LIC	BLCDT	-20060315AEZ
43	KGMC	CLOVIS CA	277.2	CP MOD	BMPCDT	-20080620AAE
43	KGMC	CLOVIS CA	302.0	PLN	DTVPLN	-DTVP1527
43	NEW	SACRAMENTO CA	136.6	APP	BNPEDT	-20030922AFV
43	NEW	SACRAMENTO CA	170.0	APP	BNPEDT	-20030922AFW
44	KTVU	OAKLAND CA	0.0	PLN	DTVPLN	-DTVP1566
44	KTVU	OAKLAND CA	0.0	APP	USERRECORD-01	

Total scenarios = 24

Result key: 1  
 Scenario 1 Affected station 4  
 Before Analysis

Results for: 43A CA SAN MATEO DTVPLN DTVP1529 PLN  
 HAAT 428.0 m, ATV ERP 536.0 kW

	POPULATION	AREA (sq km)
within Noise Limited Contour	6850570	27098.1
not affected by terrain losses	6240615	21829.4
lost to NTSC IX	0	0.0
lost to additional IX by ATV	100670	815.2
lost to ATV IX only	100670	815.2
lost to all IX	100670	815.2

Potential Interfering Stations Included in above Scenario 1

43A CA CHICO	BPCDT	20070124AKD	CP
43A CA CLOVIS	BMPCDT	20080620AAE	CP

After Analysis

Results for: 43A CA SAN MATEO DTVPLN DTVP1529 PLN  
 HAAT 428.0 m, ATV ERP 536.0 kW

	POPULATION	AREA (sq km)
within Noise Limited Contour	6850570	27098.1
not affected by terrain losses	6240615	21829.4
lost to NTSC IX	0	0.0
lost to additional IX by ATV	100943	847.3
lost to ATV IX only	100943	847.3
lost to all IX	100943	847.3

Potential Interfering Stations Included in above Scenario 1

43A CA CHICO	BPCDT	20070124AKD	CP
43A CA CLOVIS	BMPCDT	20080620AAE	CP
44A CA OAKLAND	USERRECORD01		APP

Percent new IX = 0.0044%

Result key: 2  
 Scenario 2 Affected station 4  
 Before Analysis

Results for: 43A CA SAN MATEO DTVPLN DTVP1529 PLN  
 HAAT 428.0 m, ATV ERP 536.0 kW

	POPULATION	AREA (sq km)
within Noise Limited Contour	6850570	27098.1
not affected by terrain losses	6240615	21829.4
lost to NTSC IX	0	0.0
lost to additional IX by ATV	70117	755.0
lost to ATV IX only	70117	755.0
lost to all IX	70117	755.0

Potential Interfering Stations Included in above Scenario 2

43A CA CHICO	BPCDT	20070124AKD	CP
43A CA CLOVIS	DTVPLN	DTVP1527	PLN

After Analysis

Results for: 43A CA SAN MATEO DTVPLN DTVP1529 PLN  
 HAAT 428.0 m, ATV ERP 536.0 kW

	POPULATION	AREA (sq km)
within Noise Limited Contour	6850570	27098.1
not affected by terrain losses	6240615	21829.4
lost to NTSC IX	0	0.0

Figure 3

lost to additional IX by ATV	70390	787.1
lost to ATV IX only	70390	787.1
lost to all IX	70390	787.1

Potential Interfering Stations Included in above Scenario 2

43A CA CHICO	BPCDT	20070124AKD	CP
43A CA CLOVIS	DTVPLN	DTVP1527	PLN
44A CA OAKLAND	USERRECORD01		APP

Percent new IX = 0.0044%

Result key: 3  
Scenario 3 Affected station 4  
Before Analysis

Results for: 43A CA SAN MATEO DTVPLN DTVP1529 PLN  
HAAT 428.0 m, ATV ERP 536.0 kW

	POPULATION	AREA (sq km)
within Noise Limited Contour	6850570	27098.1
not affected by terrain losses	6240615	21829.4
lost to NTSC IX	0	0.0
lost to additional IX by ATV	172395	1052.1
lost to ATV IX only	172395	1052.1
lost to all IX	172395	1052.1

Potential Interfering Stations Included in above Scenario 3

43A CA CHICO	DTVPLN	DTVP1526	PLN
43A CA CLOVIS	BMPCDT	20080620AAE	CP

After Analysis

Results for: 43A CA SAN MATEO DTVPLN DTVP1529 PLN  
HAAT 428.0 m, ATV ERP 536.0 kW

	POPULATION	AREA (sq km)
within Noise Limited Contour	6850570	27098.1
not affected by terrain losses	6240615	21829.4
lost to NTSC IX	0	0.0
lost to additional IX by ATV	172668	1084.2
lost to ATV IX only	172668	1084.2
lost to all IX	172668	1084.2

Potential Interfering Stations Included in above Scenario 3

43A CA CHICO	DTVPLN	DTVP1526	PLN
43A CA CLOVIS	BMPCDT	20080620AAE	CP
44A CA OAKLAND	USERRECORD01		APP

Percent new IX = 0.0045%

Result key: 4  
Scenario 4 Affected station 4  
Before Analysis

Results for: 43A CA SAN MATEO DTVPLN DTVP1529 PLN  
HAAT 428.0 m, ATV ERP 536.0 kW

	POPULATION	AREA (sq km)
within Noise Limited Contour	6850570	27098.1
not affected by terrain losses	6240615	21829.4
lost to NTSC IX	0	0.0
lost to additional IX by ATV	151291	1007.9
lost to ATV IX only	151291	1007.9
lost to all IX	151291	1007.9

Potential Interfering Stations Included in above Scenario 4

43A CA CHICO	DTVPLN	DTVP1526	PLN
43A CA CLOVIS	DTVPLN	DTVP1527	PLN

After Analysis

Results for: 43A CA SAN MATEO DTVPLN DTVP1529 PLN  
HAAT 428.0 m, ATV ERP 536.0 kW

	POPULATION	AREA (sq km)
within Noise Limited Contour	6850570	27098.1
not affected by terrain losses	6240615	21829.4
lost to NTSC IX	0	0.0
lost to additional IX by ATV	151564	1040.1
lost to ATV IX only	151564	1040.1

Figure 3

```

lost to all IX                151564        1040.1

Potential Interfering Stations Included in above Scenario    4

43A CA CHICO                DTVPLN        DTVP1526        PLN
43A CA CLOVIS                DTVPLN        DTVP1527        PLN
44A CA OAKLAND                USERRECORD01        APP

Percent new IX =      0.0045%

Result key:      5
Scenario      5  Affected station      4
Before Analysis

Results for: 43A CA SAN MATEO                DTVPLN        DTVP1529        PLN
HAAT  428.0 m, ATV ERP  536.0 kW
      POPULATION      AREA (sq km)
within Noise Limited Contour      6850570      27098.1
not affected by terrain losses      6240615      21829.4
lost to NTSC IX                    0          0.0
lost to additional IX by ATV      90759        726.8
lost to ATV IX only                90759        726.8
lost to all IX                    90759        726.8

Potential Interfering Stations Included in above Scenario    5

43A CA CHICO                BLCDT        20060315AEZ      LIC
43A CA CLOVIS                BMPCDT        20080620AAE      CP

After Analysis

Results for: 43A CA SAN MATEO                DTVPLN        DTVP1529        PLN
HAAT  428.0 m, ATV ERP  536.0 kW
      POPULATION      AREA (sq km)
within Noise Limited Contour      6850570      27098.1
not affected by terrain losses      6240615      21829.4
lost to NTSC IX                    0          0.0
lost to additional IX by ATV      91032        759.0
lost to ATV IX only                91032        759.0
lost to all IX                    91032        759.0

Potential Interfering Stations Included in above Scenario    5

43A CA CHICO                BLCDT        20060315AEZ      LIC
43A CA CLOVIS                BMPCDT        20080620AAE      CP
44A CA OAKLAND                USERRECORD01        APP

Percent new IX =      0.0044%

Result key:      6
Scenario      6  Affected station      4
Before Analysis

Results for: 43A CA SAN MATEO                DTVPLN        DTVP1529        PLN
HAAT  428.0 m, ATV ERP  536.0 kW
      POPULATION      AREA (sq km)
within Noise Limited Contour      6850570      27098.1
not affected by terrain losses      6240615      21829.4
lost to NTSC IX                    0          0.0
lost to additional IX by ATV      60206        662.6
lost to ATV IX only                60206        662.6
lost to all IX                    60206        662.6

Potential Interfering Stations Included in above Scenario    6

43A CA CHICO                BLCDT        20060315AEZ      LIC
43A CA CLOVIS                DTVPLN        DTVP1527        PLN

After Analysis

Results for: 43A CA SAN MATEO                DTVPLN        DTVP1529        PLN
HAAT  428.0 m, ATV ERP  536.0 kW
      POPULATION      AREA (sq km)
within Noise Limited Contour      6850570      27098.1
not affected by terrain losses      6240615      21829.4
lost to NTSC IX                    0          0.0
lost to additional IX by ATV      60479        694.7
lost to ATV IX only                60479        694.7
lost to all IX                    60479        694.7

```

Figure 3

Potential Interfering Stations Included in above Scenario 6

43A CA CHICO	BLCDT	20060315AEZ	LIC
43A CA CLOVIS	DTVPLN	DTVP1527	PLN
44A CA OAKLAND	USERRECORD01		APP

Percent new IX = 0.0044%

Result key: 7  
Scenario 7 Affected station 4  
Before Analysis

Results for: 43A CA SAN MATEO DTVPLN DTVP1529 PLN  
HAAT 428.0 m, ATV ERP 536.0 kW

	POPULATION	AREA (sq km)
within Noise Limited Contour	6850570	27098.1
not affected by terrain losses	6240615	21829.4
lost to NTSC IX	0	0.0
lost to additional IX by ATV	255541	1357.3
lost to ATV IX only	255541	1357.3
lost to all IX	255541	1357.3

Potential Interfering Stations Included in above Scenario 7

43A CA CHICO	BPCDT	20070124AKD	CP
43A CA CLOVIS	BMPCDT	20080620AAE	CP
43A CA SACRAMENTO	BNPEDT	20030922AFV	APP

After Analysis

Results for: 43A CA SAN MATEO DTVPLN DTVP1529 PLN  
HAAT 428.0 m, ATV ERP 536.0 kW

	POPULATION	AREA (sq km)
within Noise Limited Contour	6850570	27098.1
not affected by terrain losses	6240615	21829.4
lost to NTSC IX	0	0.0
lost to additional IX by ATV	255814	1389.4
lost to ATV IX only	255814	1389.4
lost to all IX	255814	1389.4

Potential Interfering Stations Included in above Scenario 7

43A CA CHICO	BPCDT	20070124AKD	CP
43A CA CLOVIS	BMPCDT	20080620AAE	CP
43A CA SACRAMENTO	BNPEDT	20030922AFV	APP
44A CA OAKLAND	USERRECORD01		APP

Percent new IX = 0.0046%

Result key: 8  
Scenario 8 Affected station 4  
Before Analysis

Results for: 43A CA SAN MATEO DTVPLN DTVP1529 PLN  
HAAT 428.0 m, ATV ERP 536.0 kW

	POPULATION	AREA (sq km)
within Noise Limited Contour	6850570	27098.1
not affected by terrain losses	6240615	21829.4
lost to NTSC IX	0	0.0
lost to additional IX by ATV	257864	1562.1
lost to ATV IX only	257864	1562.1
lost to all IX	257864	1562.1

Potential Interfering Stations Included in above Scenario 8

43A CA CHICO	BPCDT	20070124AKD	CP
43A CA CLOVIS	BMPCDT	20080620AAE	CP
43A CA SACRAMENTO	BNPEDT	20030922AFW	APP

After Analysis

Results for: 43A CA SAN MATEO DTVPLN DTVP1529 PLN  
HAAT 428.0 m, ATV ERP 536.0 kW

	POPULATION	AREA (sq km)
within Noise Limited Contour	6850570	27098.1
not affected by terrain losses	6240615	21829.4
lost to NTSC IX	0	0.0
lost to additional IX by ATV	258137	1594.2
lost to ATV IX only	258137	1594.2
lost to all IX	258137	1594.2

Figure 3

Potential Interfering Stations Included in above Scenario 8

43A CA CHICO	BPCDT	20070124AKD	CP
43A CA CLOVIS	BMPCDT	20080620AAE	CP
43A CA SACRAMENTO	BNPEDT	20030922AFW	APP
44A CA OAKLAND	USERRECORD01		APP

Percent new IX = 0.0046%

Result key: 9  
 Scenario 9 Affected station 4  
 Before Analysis

Results for: 43A CA SAN MATEO DTVPLN DTVP1529 PLN  
 HAAT 428.0 m, ATV ERP 536.0 kW

	POPULATION	AREA (sq km)
within Noise Limited Contour	6850570	27098.1
not affected by terrain losses	6240615	21829.4
lost to NTSC IX	0	0.0
lost to additional IX by ATV	100670	815.2
lost to ATV IX only	100670	815.2
lost to all IX	100670	815.2

Potential Interfering Stations Included in above Scenario 9

43A CA CHICO	BPCDT	20070124AKD	CP
43A CA CLOVIS	BMPCDT	20080620AAE	CP

After Analysis

Results for: 43A CA SAN MATEO DTVPLN DTVP1529 PLN  
 HAAT 428.0 m, ATV ERP 536.0 kW

	POPULATION	AREA (sq km)
within Noise Limited Contour	6850570	27098.1
not affected by terrain losses	6240615	21829.4
lost to NTSC IX	0	0.0
lost to additional IX by ATV	100943	847.3
lost to ATV IX only	100943	847.3
lost to all IX	100943	847.3

Potential Interfering Stations Included in above Scenario 9

43A CA CHICO	BPCDT	20070124AKD	CP
43A CA CLOVIS	BMPCDT	20080620AAE	CP
44A CA OAKLAND	USERRECORD01		APP

Percent new IX = 0.0044%

Result key: 10  
 Scenario 10 Affected station 4  
 Before Analysis

Results for: 43A CA SAN MATEO DTVPLN DTVP1529 PLN  
 HAAT 428.0 m, ATV ERP 536.0 kW

	POPULATION	AREA (sq km)
within Noise Limited Contour	6850570	27098.1
not affected by terrain losses	6240615	21829.4
lost to NTSC IX	0	0.0
lost to additional IX by ATV	234510	1321.2
lost to ATV IX only	234510	1321.2
lost to all IX	234510	1321.2

Potential Interfering Stations Included in above Scenario 10

43A CA CHICO	BPCDT	20070124AKD	CP
43A CA CLOVIS	DTVPLN	DTVP1527	PLN
43A CA SACRAMENTO	BNPEDT	20030922AFW	APP

After Analysis

Results for: 43A CA SAN MATEO DTVPLN DTVP1529 PLN  
 HAAT 428.0 m, ATV ERP 536.0 kW

	POPULATION	AREA (sq km)
within Noise Limited Contour	6850570	27098.1
not affected by terrain losses	6240615	21829.4
lost to NTSC IX	0	0.0
lost to additional IX by ATV	234783	1353.3
lost to ATV IX only	234783	1353.3
lost to all IX	234783	1353.3

Figure 3

Potential Interfering Stations Included in above Scenario 10

43A CA CHICO	BPCDT	20070124AKD	CP
43A CA CLOVIS	DTVPLN	DTVP1527	PLN
43A CA SACRAMENTO	BNPEDT	20030922AFV	APP
44A CA OAKLAND	USERRECORD01		APP

Percent new IX = 0.0045%

Result key: 11  
Scenario 11 Affected station 4  
Before Analysis

Results for: 43A CA SAN MATEO DTVPLN DTVP1529 PLN  
HAAT 428.0 m, ATV ERP 536.0 kW

	POPULATION	AREA (sq km)
within Noise Limited Contour	6850570	27098.1
not affected by terrain losses	6240615	21829.4
lost to NTSC IX	0	0.0
lost to additional IX by ATV	236833	1530.0
lost to ATV IX only	236833	1530.0
lost to all IX	236833	1530.0

Potential Interfering Stations Included in above Scenario 11

43A CA CHICO	BPCDT	20070124AKD	CP
43A CA CLOVIS	DTVPLN	DTVP1527	PLN
43A CA SACRAMENTO	BNPEDT	20030922AFW	APP

After Analysis

Results for: 43A CA SAN MATEO DTVPLN DTVP1529 PLN  
HAAT 428.0 m, ATV ERP 536.0 kW

	POPULATION	AREA (sq km)
within Noise Limited Contour	6850570	27098.1
not affected by terrain losses	6240615	21829.4
lost to NTSC IX	0	0.0
lost to additional IX by ATV	237106	1562.1
lost to ATV IX only	237106	1562.1
lost to all IX	237106	1562.1

Potential Interfering Stations Included in above Scenario 11

43A CA CHICO	BPCDT	20070124AKD	CP
43A CA CLOVIS	DTVPLN	DTVP1527	PLN
43A CA SACRAMENTO	BNPEDT	20030922AFW	APP
44A CA OAKLAND	USERRECORD01		APP

Percent new IX = 0.0045%

Result key: 12  
Scenario 12 Affected station 4  
Before Analysis

Results for: 43A CA SAN MATEO DTVPLN DTVP1529 PLN  
HAAT 428.0 m, ATV ERP 536.0 kW

	POPULATION	AREA (sq km)
within Noise Limited Contour	6850570	27098.1
not affected by terrain losses	6240615	21829.4
lost to NTSC IX	0	0.0
lost to additional IX by ATV	70117	755.0
lost to ATV IX only	70117	755.0
lost to all IX	70117	755.0

Potential Interfering Stations Included in above Scenario 12

43A CA CHICO	BPCDT	20070124AKD	CP
43A CA CLOVIS	DTVPLN	DTVP1527	PLN

After Analysis

Results for: 43A CA SAN MATEO DTVPLN DTVP1529 PLN  
HAAT 428.0 m, ATV ERP 536.0 kW

	POPULATION	AREA (sq km)
within Noise Limited Contour	6850570	27098.1
not affected by terrain losses	6240615	21829.4
lost to NTSC IX	0	0.0
lost to additional IX by ATV	70390	787.1
lost to ATV IX only	70390	787.1

Figure 3

```

lost to all IX                70390        787.1

Potential Interfering Stations Included in above Scenario    12

43A CA CHICO                BPCDT      20070124AKD    CP
43A CA CLOVIS                DTVPLN    DTVP1527      PLN
44A CA OAKLAND                USERRECORD01    APP

Percent new IX =      0.0044%

Result key:      13
Scenario      13  Affected station      4
Before Analysis

Results for: 43A CA SAN MATEO                DTVPLN    DTVP1529      PLN
HAAT  428.0 m, ATV ERP  536.0 kW
      POPULATION    AREA (sq km)
within Noise Limited Contour    6850570    27098.1
not affected by terrain losses    6240615    21829.4
lost to NTSC IX                  0          0.0
lost to additional IX by ATV    290539    1489.8
lost to ATV IX only             290539    1489.8
lost to all IX                  290539    1489.8

Potential Interfering Stations Included in above Scenario    13

43A CA CHICO                DTVPLN    DTVP1526      PLN
43A CA CLOVIS                BMPCDT    20080620AAE    CP
43A CA SACRAMENTO            BNPEDT    20030922AFV    APP

After Analysis

Results for: 43A CA SAN MATEO                DTVPLN    DTVP1529      PLN
HAAT  428.0 m, ATV ERP  536.0 kW
      POPULATION    AREA (sq km)
within Noise Limited Contour    6850570    27098.1
not affected by terrain losses    6240615    21829.4
lost to NTSC IX                  0          0.0
lost to additional IX by ATV    290812    1522.0
lost to ATV IX only             290812    1522.0
lost to all IX                  290812    1522.0

Potential Interfering Stations Included in above Scenario    13

43A CA CHICO                DTVPLN    DTVP1526      PLN
43A CA CLOVIS                BMPCDT    20080620AAE    CP
43A CA SACRAMENTO            BNPEDT    20030922AFV    APP
44A CA OAKLAND                USERRECORD01    APP

Percent new IX =      0.0046%

Result key:      14
Scenario      14  Affected station      4
Before Analysis

Results for: 43A CA SAN MATEO                DTVPLN    DTVP1529      PLN
HAAT  428.0 m, ATV ERP  536.0 kW
      POPULATION    AREA (sq km)
within Noise Limited Contour    6850570    27098.1
not affected by terrain losses    6240615    21829.4
lost to NTSC IX                  0          0.0
lost to additional IX by ATV    292888    1678.6
lost to ATV IX only             292888    1678.6
lost to all IX                  292888    1678.6

Potential Interfering Stations Included in above Scenario    14

43A CA CHICO                DTVPLN    DTVP1526      PLN
43A CA CLOVIS                BMPCDT    20080620AAE    CP
43A CA SACRAMENTO            BNPEDT    20030922AFV    APP

After Analysis

Results for: 43A CA SAN MATEO                DTVPLN    DTVP1529      PLN
HAAT  428.0 m, ATV ERP  536.0 kW
      POPULATION    AREA (sq km)
within Noise Limited Contour    6850570    27098.1
not affected by terrain losses    6240615    21829.4
lost to NTSC IX                  0          0.0
lost to additional IX by ATV    293161    1710.7

```



Figure 3

```

lost to ATV IX only          293161      1710.7
lost to all IX               293161      1710.7

Potential Interfering Stations Included in above Scenario    14

43A CA CHICO                DTVPLN    DTVP1526    PLN
43A CA CLOVIS               BMPCDT    20080620AAE CP
43A CA SACRAMENTO          BNPEDT    20030922AFW APP
44A CA OAKLAND              USERRECORD01 APP

Percent new IX =      0.0046%

Result key:      15
Scenario      15 Affected station      4
Before Analysis

Results for: 43A CA SAN MATEO          DTVPLN    DTVP1529    PLN
HAAT  428.0 m, ATV ERP  536.0 kW
      POPULATION    AREA (sq km)
within Noise Limited Contour    6850570    27098.1
not affected by terrain losses    6240615    21829.4
lost to NTSC IX                  0          0.0
lost to additional IX by ATV    172395    1052.1
lost to ATV IX only             172395    1052.1
lost to all IX                  172395    1052.1

Potential Interfering Stations Included in above Scenario    15

43A CA CHICO                DTVPLN    DTVP1526    PLN
43A CA CLOVIS               BMPCDT    20080620AAE CP

After Analysis

Results for: 43A CA SAN MATEO          DTVPLN    DTVP1529    PLN
HAAT  428.0 m, ATV ERP  536.0 kW
      POPULATION    AREA (sq km)
within Noise Limited Contour    6850570    27098.1
not affected by terrain losses    6240615    21829.4
lost to NTSC IX                  0          0.0
lost to additional IX by ATV    172668    1084.2
lost to ATV IX only             172668    1084.2
lost to all IX                  172668    1084.2

Potential Interfering Stations Included in above Scenario    15

43A CA CHICO                DTVPLN    DTVP1526    PLN
43A CA CLOVIS               BMPCDT    20080620AAE CP
44A CA OAKLAND              USERRECORD01 APP

Percent new IX =      0.0045%

Result key:      16
Scenario      16 Affected station      4
Before Analysis

Results for: 43A CA SAN MATEO          DTVPLN    DTVP1529    PLN
HAAT  428.0 m, ATV ERP  536.0 kW
      POPULATION    AREA (sq km)
within Noise Limited Contour    6850570    27098.1
not affected by terrain losses    6240615    21829.4
lost to NTSC IX                  0          0.0
lost to additional IX by ATV    269508    1457.7
lost to ATV IX only             269508    1457.7
lost to all IX                  269508    1457.7

Potential Interfering Stations Included in above Scenario    16

43A CA CHICO                DTVPLN    DTVP1526    PLN
43A CA CLOVIS               DTVPLN    DTVP1527    PLN
43A CA SACRAMENTO          BNPEDT    20030922AFV APP

After Analysis

Results for: 43A CA SAN MATEO          DTVPLN    DTVP1529    PLN
HAAT  428.0 m, ATV ERP  536.0 kW
      POPULATION    AREA (sq km)
within Noise Limited Contour    6850570    27098.1
not affected by terrain losses    6240615    21829.4
lost to NTSC IX                  0          0.0
lost to additional IX by ATV    269781    1489.8

```

Figure 3

lost to ATV IX only	269781	1489.8	
lost to all IX	269781	1489.8	

Potential Interfering Stations Included in above Scenario 16

43A CA CHICO	DTVPLN	DTVP1526	PLN
43A CA CLOVIS	DTVPLN	DTVP1527	PLN
43A CA SACRAMENTO	BNPEDT	20030922AFV	APP
44A CA OAKLAND	USERRECORD01		APP

Percent new IX = 0.0046%

Result key: 17

Scenario 17 Affected station 4

Before Analysis

Results for: 43A CA SAN MATEO DTVPLN DTVP1529 PLN

HAAT 428.0 m, ATV ERP 536.0 kW

	POPULATION	AREA (sq km)
within Noise Limited Contour	6850570	27098.1
not affected by terrain losses	6240615	21829.4
lost to NTSC IX	0	0.0
lost to additional IX by ATV	271857	1642.4
lost to ATV IX only	271857	1642.4
lost to all IX	271857	1642.4

Potential Interfering Stations Included in above Scenario 17

43A CA CHICO	DTVPLN	DTVP1526	PLN
43A CA CLOVIS	DTVPLN	DTVP1527	PLN
43A CA SACRAMENTO	BNPEDT	20030922AFW	APP

After Analysis

Results for: 43A CA SAN MATEO DTVPLN DTVP1529 PLN

HAAT 428.0 m, ATV ERP 536.0 kW

	POPULATION	AREA (sq km)
within Noise Limited Contour	6850570	27098.1
not affected by terrain losses	6240615	21829.4
lost to NTSC IX	0	0.0
lost to additional IX by ATV	272130	1674.6
lost to ATV IX only	272130	1674.6
lost to all IX	272130	1674.6

Potential Interfering Stations Included in above Scenario 17

43A CA CHICO	DTVPLN	DTVP1526	PLN
43A CA CLOVIS	DTVPLN	DTVP1527	PLN
43A CA SACRAMENTO	BNPEDT	20030922AFW	APP
44A CA OAKLAND	USERRECORD01		APP

Percent new IX = 0.0046%

Result key: 18

Scenario 18 Affected station 4

Before Analysis

Results for: 43A CA SAN MATEO DTVPLN DTVP1529 PLN

HAAT 428.0 m, ATV ERP 536.0 kW

	POPULATION	AREA (sq km)
within Noise Limited Contour	6850570	27098.1
not affected by terrain losses	6240615	21829.4
lost to NTSC IX	0	0.0
lost to additional IX by ATV	151291	1007.9
lost to ATV IX only	151291	1007.9
lost to all IX	151291	1007.9

Potential Interfering Stations Included in above Scenario 18

43A CA CHICO	DTVPLN	DTVP1526	PLN
43A CA CLOVIS	DTVPLN	DTVP1527	PLN

After Analysis

Results for: 43A CA SAN MATEO DTVPLN DTVP1529 PLN

HAAT 428.0 m, ATV ERP 536.0 kW

	POPULATION	AREA (sq km)
within Noise Limited Contour	6850570	27098.1
not affected by terrain losses	6240615	21829.4
lost to NTSC IX	0	0.0

Figure 3

lost to additional IX by ATV	151564	1040.1	
lost to ATV IX only	151564	1040.1	
lost to all IX	151564	1040.1	

Potential Interfering Stations Included in above Scenario 18

43A CA CHICO	DTVPLN	DTVP1526	PLN
43A CA CLOVIS	DTVPLN	DTVP1527	PLN
44A CA OAKLAND	USERRECORD01		APP

Percent new IX = 0.0045%

Result key: 19

Scenario 19 Affected station 4

Before Analysis

Results for: 43A CA SAN MATEO DTVPLN DTVP1529 PLN

HAAT 428.0 m, ATV ERP 536.0 kW

	POPULATION	AREA (sq km)
within Noise Limited Contour	6850570	27098.1
not affected by terrain losses	6240615	21829.4
lost to NTSC IX	0	0.0
lost to additional IX by ATV	252847	1337.2
lost to ATV IX only	252847	1337.2
lost to all IX	252847	1337.2

Potential Interfering Stations Included in above Scenario 19

43A CA CHICO	BLCDT	20060315AEZ	LIC
43A CA CLOVIS	BMPCDT	20080620AAE	CP
43A CA SACRAMENTO	BNPEDT	20030922AFV	APP

After Analysis

Results for: 43A CA SAN MATEO DTVPLN DTVP1529 PLN

HAAT 428.0 m, ATV ERP 536.0 kW

	POPULATION	AREA (sq km)
within Noise Limited Contour	6850570	27098.1
not affected by terrain losses	6240615	21829.4
lost to NTSC IX	0	0.0
lost to additional IX by ATV	253120	1369.4
lost to ATV IX only	253120	1369.4
lost to all IX	253120	1369.4

Potential Interfering Stations Included in above Scenario 19

43A CA CHICO	BLCDT	20060315AEZ	LIC
43A CA CLOVIS	BMPCDT	20080620AAE	CP
43A CA SACRAMENTO	BNPEDT	20030922AFV	APP
44A CA OAKLAND	USERRECORD01		APP

Percent new IX = 0.0046%

Result key: 20

Scenario 20 Affected station 4

Before Analysis

Results for: 43A CA SAN MATEO DTVPLN DTVP1529 PLN

HAAT 428.0 m, ATV ERP 536.0 kW

	POPULATION	AREA (sq km)
within Noise Limited Contour	6850570	27098.1
not affected by terrain losses	6240615	21829.4
lost to NTSC IX	0	0.0
lost to additional IX by ATV	257747	1550.1
lost to ATV IX only	257747	1550.1
lost to all IX	257747	1550.1

Potential Interfering Stations Included in above Scenario 20

43A CA CHICO	BLCDT	20060315AEZ	LIC
43A CA CLOVIS	BMPCDT	20080620AAE	CP
43A CA SACRAMENTO	BNPEDT	20030922AFW	APP

After Analysis

Results for: 43A CA SAN MATEO DTVPLN DTVP1529 PLN

HAAT 428.0 m, ATV ERP 536.0 kW

	POPULATION	AREA (sq km)
within Noise Limited Contour	6850570	27098.1
not affected by terrain losses	6240615	21829.4

Figure 3

lost to NTSC IX	0	0.0
lost to additional IX by ATV	258020	1582.2
lost to ATV IX only	258020	1582.2
lost to all IX	258020	1582.2

Potential Interfering Stations Included in above Scenario 20

43A CA CHICO	BLCDT	20060315AEZ	LIC
43A CA CLOVIS	BMPCDT	20080620AAE	CP
43A CA SACRAMENTO	BNPEDT	20030922AFW	APP
44A CA OAKLAND	USERRECORD01		APP

Percent new IX = 0.0046%

Result key: 21

Scenario 21 Affected station 4

Before Analysis

Results for: 43A CA SAN MATEO DTVPLN DTVP1529 PLN

HAAT 428.0 m, ATV ERP 536.0 kW

	POPULATION	AREA (sq km)
within Noise Limited Contour	6850570	27098.1
not affected by terrain losses	6240615	21829.4
lost to NTSC IX	0	0.0
lost to additional IX by ATV	90759	726.8
lost to ATV IX only	90759	726.8
lost to all IX	90759	726.8

Potential Interfering Stations Included in above Scenario 21

43A CA CHICO	BLCDT	20060315AEZ	LIC
43A CA CLOVIS	BMPCDT	20080620AAE	CP

After Analysis

Results for: 43A CA SAN MATEO DTVPLN DTVP1529 PLN

HAAT 428.0 m, ATV ERP 536.0 kW

	POPULATION	AREA (sq km)
within Noise Limited Contour	6850570	27098.1
not affected by terrain losses	6240615	21829.4
lost to NTSC IX	0	0.0
lost to additional IX by ATV	91032	759.0
lost to ATV IX only	91032	759.0
lost to all IX	91032	759.0

Potential Interfering Stations Included in above Scenario 21

43A CA CHICO	BLCDT	20060315AEZ	LIC
43A CA CLOVIS	BMPCDT	20080620AAE	CP
44A CA OAKLAND	USERRECORD01		APP

Percent new IX = 0.0044%

Result key: 22

Scenario 22 Affected station 4

Before Analysis

Results for: 43A CA SAN MATEO DTVPLN DTVP1529 PLN

HAAT 428.0 m, ATV ERP 536.0 kW

	POPULATION	AREA (sq km)
within Noise Limited Contour	6850570	27098.1
not affected by terrain losses	6240615	21829.4
lost to NTSC IX	0	0.0
lost to additional IX by ATV	231816	1301.1
lost to ATV IX only	231816	1301.1
lost to all IX	231816	1301.1

Potential Interfering Stations Included in above Scenario 22

43A CA CHICO	BLCDT	20060315AEZ	LIC
43A CA CLOVIS	DTVPLN	DTVP1527	PLN
43A CA SACRAMENTO	BNPEDT	20030922AFV	APP

After Analysis

Results for: 43A CA SAN MATEO DTVPLN DTVP1529 PLN

HAAT 428.0 m, ATV ERP 536.0 kW

	POPULATION	AREA (sq km)
within Noise Limited Contour	6850570	27098.1
not affected by terrain losses	6240615	21829.4

Figure 3

lost to NTSC IX	0	0.0
lost to additional IX by ATV	232089	1333.2
lost to ATV IX only	232089	1333.2
lost to all IX	232089	1333.2

Potential Interfering Stations Included in above Scenario 22

43A CA CHICO	BLCDT	20060315AEZ	LIC
43A CA CLOVIS	DTVPLN	DTVP1527	PLN
43A CA SACRAMENTO	BNPEDT	20030922AFV	APP
44A CA OAKLAND	USERRECORD01		APP

Percent new IX = 0.0045%

Result key: 23

Scenario 23 Affected station 4

Before Analysis

Results for: 43A CA SAN MATEO DTVPLN DTVP1529 PLN

HAAT 428.0 m, ATV ERP 536.0 kW

	POPULATION	AREA (sq km)
within Noise Limited Contour	6850570	27098.1
not affected by terrain losses	6240615	21829.4
lost to NTSC IX	0	0.0
lost to additional IX by ATV	236716	1517.9
lost to ATV IX only	236716	1517.9
lost to all IX	236716	1517.9

Potential Interfering Stations Included in above Scenario 23

43A CA CHICO	BLCDT	20060315AEZ	LIC
43A CA CLOVIS	DTVPLN	DTVP1527	PLN
43A CA SACRAMENTO	BNPEDT	20030922AFW	APP

After Analysis

Results for: 43A CA SAN MATEO DTVPLN DTVP1529 PLN

HAAT 428.0 m, ATV ERP 536.0 kW

	POPULATION	AREA (sq km)
within Noise Limited Contour	6850570	27098.1
not affected by terrain losses	6240615	21829.4
lost to NTSC IX	0	0.0
lost to additional IX by ATV	236989	1550.1
lost to ATV IX only	236989	1550.1
lost to all IX	236989	1550.1

Potential Interfering Stations Included in above Scenario 23

43A CA CHICO	BLCDT	20060315AEZ	LIC
43A CA CLOVIS	DTVPLN	DTVP1527	PLN
43A CA SACRAMENTO	BNPEDT	20030922AFW	APP
44A CA OAKLAND	USERRECORD01		APP

Percent new IX = 0.0045%

Result key: 24

Scenario 24 Affected station 4

Before Analysis

Results for: 43A CA SAN MATEO DTVPLN DTVP1529 PLN

HAAT 428.0 m, ATV ERP 536.0 kW

	POPULATION	AREA (sq km)
within Noise Limited Contour	6850570	27098.1
not affected by terrain losses	6240615	21829.4
lost to NTSC IX	0	0.0
lost to additional IX by ATV	60206	662.6
lost to ATV IX only	60206	662.6
lost to all IX	60206	662.6

Potential Interfering Stations Included in above Scenario 24

43A CA CHICO	BLCDT	20060315AEZ	LIC
43A CA CLOVIS	DTVPLN	DTVP1527	PLN

After Analysis

Results for: 43A CA SAN MATEO DTVPLN DTVP1529 PLN

HAAT 428.0 m, ATV ERP 536.0 kW

	POPULATION	AREA (sq km)
within Noise Limited Contour	6850570	27098.1

Figure 3

```

not affected by terrain losses    6240615    21829.4
lost to NTSC IX                  0          0.0
lost to additional IX by ATV     60479     694.7
lost to ATV IX only              60479     694.7
lost to all IX                   60479     694.7

Potential Interfering Stations Included in above Scenario    24

43A CA CHICO          BLCDDT    20060315AEZ    LIC
43A CA CLOVIS         DTVPLN    DTVP1527    PLN
44A CA OAKLAND        USERRECORD01    APP

Percent new IX =      0.0044%

Worst case new IX    0.0046% Scenario    14

#####

Analysis of Interference to Affected Station    5

Analysis of current record
Channel      Call      City/State      Application Ref. No.
  43      KCSM-TV    SAN MATEO CA      BLEDT      -20030822AFZ

Stations Potentially Affecting This Station

Chan  Call      City/State      Dist(km) Status Application Ref. No.
  43  KHSL-TV    CHICO CA        253.0   CP      BPCDDT    -20070124AKD
  43  KHSL-TV    CHICO CA        253.1   PLN      DTVPLN    -DTV1526
  43  KHSL-TV    CHICO CA        253.0   LIC      BLCDDT    -20060315AEZ
  43  KGMC      CLOVIS CA        277.2   CP MOD  BMPCDDT    -20080620AAE
  43  KGMC      CLOVIS CA        302.0   PLN      DTVPLN    -DTV1527
  43  NEW      SACRAMENTO CA    136.6   APP      BNPEDT    -20030922AFV
  43  NEW      SACRAMENTO CA    170.0   APP      BNPEDT    -20030922AFW
  44  KTVU      OAKLAND CA        0.0   PLN      DTVPLN    -DTV1566
  44  KTVU      OAKLAND CA        0.0   APP      USERRECORD-01

Total scenarios =    24

Result key:      25
Scenario        1 Affected station      5
Before Analysis

Results for: 43A CA SAN MATEO      BLEDT    20030822AFZ    LIC
HAAT 428.0 m, ATV ERP 536.0 kW
      POPULATION      AREA (sq km)
within Noise Limited Contour    6850570    27098.1
not affected by terrain losses    6240615    21829.4
lost to NTSC IX                  0          0.0
lost to additional IX by ATV     100670     815.2
lost to ATV IX only              100670     815.2
lost to all IX                   100670     815.2

Potential Interfering Stations Included in above Scenario    1

43A CA CHICO          BPCDDT    20070124AKD    CP
43A CA CLOVIS         BMPCDDT    20080620AAE    CP

After Analysis

Results for: 43A CA SAN MATEO      BLEDT    20030822AFZ    LIC
HAAT 428.0 m, ATV ERP 536.0 kW
      POPULATION      AREA (sq km)
within Noise Limited Contour    6850570    27098.1
not affected by terrain losses    6240615    21829.4
lost to NTSC IX                  0          0.0
lost to additional IX by ATV     100943     847.3
lost to ATV IX only              100943     847.3
lost to all IX                   100943     847.3

Potential Interfering Stations Included in above Scenario    1

43A CA CHICO          BPCDDT    20070124AKD    CP
43A CA CLOVIS         BMPCDDT    20080620AAE    CP
44A CA OAKLAND        USERRECORD01    APP

Percent new IX =      0.0044%

```

Figure 3

Result key: 26  
Scenario 2 Affected station 5  
Before Analysis

Results for: 43A CA SAN MATEO BLEDT 20030822AFZ LIC  
HAAT 428.0 m, ATV ERP 536.0 kW

	POPULATION	AREA (sq km)
within Noise Limited Contour	6850570	27098.1
not affected by terrain losses	6240615	21829.4
lost to NTSC IX	0	0.0
lost to additional IX by ATV	70117	755.0
lost to ATV IX only	70117	755.0
lost to all IX	70117	755.0

Potential Interfering Stations Included in above Scenario 2

43A CA CHICO	BPCDT	20070124AKD	CP
43A CA CLOVIS	DTVPLN	DTVP1527	PLN

After Analysis

Results for: 43A CA SAN MATEO BLEDT 20030822AFZ LIC  
HAAT 428.0 m, ATV ERP 536.0 kW

	POPULATION	AREA (sq km)
within Noise Limited Contour	6850570	27098.1
not affected by terrain losses	6240615	21829.4
lost to NTSC IX	0	0.0
lost to additional IX by ATV	70390	787.1
lost to ATV IX only	70390	787.1
lost to all IX	70390	787.1

Potential Interfering Stations Included in above Scenario 2

43A CA CHICO	BPCDT	20070124AKD	CP
43A CA CLOVIS	DTVPLN	DTVP1527	PLN
44A CA OAKLAND	USERRECORD01		APP

Percent new IX = 0.0044%

Result key: 27  
Scenario 3 Affected station 5  
Before Analysis

Results for: 43A CA SAN MATEO BLEDT 20030822AFZ LIC  
HAAT 428.0 m, ATV ERP 536.0 kW

	POPULATION	AREA (sq km)
within Noise Limited Contour	6850570	27098.1
not affected by terrain losses	6240615	21829.4
lost to NTSC IX	0	0.0
lost to additional IX by ATV	172395	1052.1
lost to ATV IX only	172395	1052.1
lost to all IX	172395	1052.1

Potential Interfering Stations Included in above Scenario 3

43A CA CHICO	DTVPLN	DTVP1526	PLN
43A CA CLOVIS	BMPCDT	20080620AAE	CP

After Analysis

Results for: 43A CA SAN MATEO BLEDT 20030822AFZ LIC  
HAAT 428.0 m, ATV ERP 536.0 kW

	POPULATION	AREA (sq km)
within Noise Limited Contour	6850570	27098.1
not affected by terrain losses	6240615	21829.4
lost to NTSC IX	0	0.0
lost to additional IX by ATV	172668	1084.2
lost to ATV IX only	172668	1084.2
lost to all IX	172668	1084.2

Potential Interfering Stations Included in above Scenario 3

43A CA CHICO	DTVPLN	DTVP1526	PLN
43A CA CLOVIS	BMPCDT	20080620AAE	CP
44A CA OAKLAND	USERRECORD01		APP

Percent new IX = 0.0045%

Result key: 28

Figure 3

Scenario 4 Affected station 5  
Before Analysis

Results for: 43A CA SAN MATEO BLEDT 20030822AFZ LIC  
HAAT 428.0 m, ATV ERP 536.0 kW

	POPULATION	AREA (sq km)
within Noise Limited Contour	6850570	27098.1
not affected by terrain losses	6240615	21829.4
lost to NTSC IX	0	0.0
lost to additional IX by ATV	151291	1007.9
lost to ATV IX only	151291	1007.9
lost to all IX	151291	1007.9

Potential Interfering Stations Included in above Scenario 4

43A CA CHICO	DTVPLN	DTVP1526	PLN
43A CA CLOVIS	DTVPLN	DTVP1527	PLN

After Analysis

Results for: 43A CA SAN MATEO BLEDT 20030822AFZ LIC  
HAAT 428.0 m, ATV ERP 536.0 kW

	POPULATION	AREA (sq km)
within Noise Limited Contour	6850570	27098.1
not affected by terrain losses	6240615	21829.4
lost to NTSC IX	0	0.0
lost to additional IX by ATV	151564	1040.1
lost to ATV IX only	151564	1040.1
lost to all IX	151564	1040.1

Potential Interfering Stations Included in above Scenario 4

43A CA CHICO	DTVPLN	DTVP1526	PLN
43A CA CLOVIS	DTVPLN	DTVP1527	PLN
44A CA OAKLAND	USERRECORD01		APP

Percent new IX = 0.0045%

Result key: 29

Scenario 5 Affected station 5  
Before Analysis

Results for: 43A CA SAN MATEO BLEDT 20030822AFZ LIC  
HAAT 428.0 m, ATV ERP 536.0 kW

	POPULATION	AREA (sq km)
within Noise Limited Contour	6850570	27098.1
not affected by terrain losses	6240615	21829.4
lost to NTSC IX	0	0.0
lost to additional IX by ATV	90759	726.8
lost to ATV IX only	90759	726.8
lost to all IX	90759	726.8

Potential Interfering Stations Included in above Scenario 5

43A CA CHICO	BLCDT	20060315AEZ	LIC
43A CA CLOVIS	BMPCDT	20080620AAE	CP

After Analysis

Results for: 43A CA SAN MATEO BLEDT 20030822AFZ LIC  
HAAT 428.0 m, ATV ERP 536.0 kW

	POPULATION	AREA (sq km)
within Noise Limited Contour	6850570	27098.1
not affected by terrain losses	6240615	21829.4
lost to NTSC IX	0	0.0
lost to additional IX by ATV	91032	759.0
lost to ATV IX only	91032	759.0
lost to all IX	91032	759.0

Potential Interfering Stations Included in above Scenario 5

43A CA CHICO	BLCDT	20060315AEZ	LIC
43A CA CLOVIS	BMPCDT	20080620AAE	CP
44A CA OAKLAND	USERRECORD01		APP

Percent new IX = 0.0044%

Result key: 30

Scenario 6 Affected station 5  
Before Analysis



Figure 3

Results for: 43A CA SAN MATEO BLEDT 20030822AFZ LIC  
 HAAT 428.0 m, ATV ERP 536.0 kW

	POPULATION	AREA (sq km)
within Noise Limited Contour	6850570	27098.1
not affected by terrain losses	6240615	21829.4
lost to NTSC IX	0	0.0
lost to additional IX by ATV	60206	662.6
lost to ATV IX only	60206	662.6
lost to all IX	60206	662.6

Potential Interfering Stations Included in above Scenario 6

43A CA CHICO	BLCDDT	20060315AEZ	LIC
43A CA CLOVIS	DTVPLN	DTVP1527	PLN

After Analysis

Results for: 43A CA SAN MATEO BLEDT 20030822AFZ LIC  
 HAAT 428.0 m, ATV ERP 536.0 kW

	POPULATION	AREA (sq km)
within Noise Limited Contour	6850570	27098.1
not affected by terrain losses	6240615	21829.4
lost to NTSC IX	0	0.0
lost to additional IX by ATV	60479	694.7
lost to ATV IX only	60479	694.7
lost to all IX	60479	694.7

Potential Interfering Stations Included in above Scenario 6

43A CA CHICO	BLCDDT	20060315AEZ	LIC
43A CA CLOVIS	DTVPLN	DTVP1527	PLN
44A CA OAKLAND	USERRECORD01		APP

Percent new IX = 0.0044%

Result key: 31  
 Scenario 7 Affected station 5  
 Before Analysis

Results for: 43A CA SAN MATEO BLEDT 20030822AFZ LIC  
 HAAT 428.0 m, ATV ERP 536.0 kW

	POPULATION	AREA (sq km)
within Noise Limited Contour	6850570	27098.1
not affected by terrain losses	6240615	21829.4
lost to NTSC IX	0	0.0
lost to additional IX by ATV	255541	1357.3
lost to ATV IX only	255541	1357.3
lost to all IX	255541	1357.3

Potential Interfering Stations Included in above Scenario 7

43A CA CHICO	BPCDDT	20070124AKD	CP
43A CA CLOVIS	BMPCDDT	20080620AAE	CP
43A CA SACRAMENTO	BNPEDT	20030922AFV	APP

After Analysis

Results for: 43A CA SAN MATEO BLEDT 20030822AFZ LIC  
 HAAT 428.0 m, ATV ERP 536.0 kW

	POPULATION	AREA (sq km)
within Noise Limited Contour	6850570	27098.1
not affected by terrain losses	6240615	21829.4
lost to NTSC IX	0	0.0
lost to additional IX by ATV	255814	1389.4
lost to ATV IX only	255814	1389.4
lost to all IX	255814	1389.4

Potential Interfering Stations Included in above Scenario 7

43A CA CHICO	BPCDDT	20070124AKD	CP
43A CA CLOVIS	BMPCDDT	20080620AAE	CP
43A CA SACRAMENTO	BNPEDT	20030922AFV	APP
44A CA OAKLAND	USERRECORD01		APP

Percent new IX = 0.0046%

Result key: 32  
 Scenario 8 Affected station 5  
 Before Analysis

Figure 3

```

Results for: 43A CA SAN MATEO      BLEDT      20030822AFZ  LIC
HAAT  428.0 m, ATV ERP  536.0 kW
      POPULATION      AREA (sq km)
within Noise Limited Contour      6850570      27098.1
not affected by terrain losses      6240615      21829.4
lost to NTSC IX                      0          0.0
lost to additional IX by ATV      257864      1562.1
lost to ATV IX only                257864      1562.1
lost to all IX                    257864      1562.1

Potential Interfering Stations Included in above Scenario      8

43A CA CHICO      BPCDT      20070124AKD  CP
43A CA CLOVIS     BMPCDT      20080620AAE  CP
43A CA SACRAMENTO BNPEDT      20030922AFW  APP

After Analysis

Results for: 43A CA SAN MATEO      BLEDT      20030822AFZ  LIC
HAAT  428.0 m, ATV ERP  536.0 kW
      POPULATION      AREA (sq km)
within Noise Limited Contour      6850570      27098.1
not affected by terrain losses      6240615      21829.4
lost to NTSC IX                      0          0.0
lost to additional IX by ATV      258137      1594.2
lost to ATV IX only                258137      1594.2
lost to all IX                    258137      1594.2

Potential Interfering Stations Included in above Scenario      8

43A CA CHICO      BPCDT      20070124AKD  CP
43A CA CLOVIS     BMPCDT      20080620AAE  CP
43A CA SACRAMENTO BNPEDT      20030922AFW  APP
44A CA OAKLAND    USERRECORD01  APP

Percent new IX =      0.0046%

Result key:      33
Scenario      9  Affected station      5
Before Analysis

Results for: 43A CA SAN MATEO      BLEDT      20030822AFZ  LIC
HAAT  428.0 m, ATV ERP  536.0 kW
      POPULATION      AREA (sq km)
within Noise Limited Contour      6850570      27098.1
not affected by terrain losses      6240615      21829.4
lost to NTSC IX                      0          0.0
lost to additional IX by ATV      100670      815.2
lost to ATV IX only                100670      815.2
lost to all IX                    100670      815.2

Potential Interfering Stations Included in above Scenario      9

43A CA CHICO      BPCDT      20070124AKD  CP
43A CA CLOVIS     BMPCDT      20080620AAE  CP

After Analysis

Results for: 43A CA SAN MATEO      BLEDT      20030822AFZ  LIC
HAAT  428.0 m, ATV ERP  536.0 kW
      POPULATION      AREA (sq km)
within Noise Limited Contour      6850570      27098.1
not affected by terrain losses      6240615      21829.4
lost to NTSC IX                      0          0.0
lost to additional IX by ATV      100943      847.3
lost to ATV IX only                100943      847.3
lost to all IX                    100943      847.3

Potential Interfering Stations Included in above Scenario      9

43A CA CHICO      BPCDT      20070124AKD  CP
43A CA CLOVIS     BMPCDT      20080620AAE  CP
44A CA OAKLAND    USERRECORD01  APP

Percent new IX =      0.0044%

Result key:      34
Scenario      10 Affected station      5
Before Analysis

```

Figure 3

```

Results for: 43A CA SAN MATEO          BLEDT      20030822AFZ  LIC
HAAT  428.0 m, ATV ERP  536.0 kW
      POPULATION  AREA (sq km)
within Noise Limited Contour      6850570      27098.1
not affected by terrain losses    6240615      21829.4
lost to NTSC IX                   0           0.0
lost to additional IX by ATV      234510      1321.2
lost to ATV IX only               234510      1321.2
lost to all IX                   234510      1321.2

Potential Interfering Stations Included in above Scenario      10

43A CA CHICO          BPCDT      20070124AKD  CP
43A CA CLOVIS         DTVPLN     DTVP1527    PLN
43A CA SACRAMENTO     BNPEDT     20030922AFV  APP

After Analysis

Results for: 43A CA SAN MATEO          BLEDT      20030822AFZ  LIC
HAAT  428.0 m, ATV ERP  536.0 kW
      POPULATION  AREA (sq km)
within Noise Limited Contour      6850570      27098.1
not affected by terrain losses    6240615      21829.4
lost to NTSC IX                   0           0.0
lost to additional IX by ATV      234783      1353.3
lost to ATV IX only               234783      1353.3
lost to all IX                   234783      1353.3

Potential Interfering Stations Included in above Scenario      10

43A CA CHICO          BPCDT      20070124AKD  CP
43A CA CLOVIS         DTVPLN     DTVP1527    PLN
43A CA SACRAMENTO     BNPEDT     20030922AFV  APP
44A CA OAKLAND        USERRECORD01  APP

Percent new IX =      0.0045%

Result key:      35
Scenario      11  Affected station      5
Before Analysis

Results for: 43A CA SAN MATEO          BLEDT      20030822AFZ  LIC
HAAT  428.0 m, ATV ERP  536.0 kW
      POPULATION  AREA (sq km)
within Noise Limited Contour      6850570      27098.1
not affected by terrain losses    6240615      21829.4
lost to NTSC IX                   0           0.0
lost to additional IX by ATV      236833      1530.0
lost to ATV IX only               236833      1530.0
lost to all IX                   236833      1530.0

Potential Interfering Stations Included in above Scenario      11

43A CA CHICO          BPCDT      20070124AKD  CP
43A CA CLOVIS         DTVPLN     DTVP1527    PLN
43A CA SACRAMENTO     BNPEDT     20030922AFW  APP

After Analysis

Results for: 43A CA SAN MATEO          BLEDT      20030822AFZ  LIC
HAAT  428.0 m, ATV ERP  536.0 kW
      POPULATION  AREA (sq km)
within Noise Limited Contour      6850570      27098.1
not affected by terrain losses    6240615      21829.4
lost to NTSC IX                   0           0.0
lost to additional IX by ATV      237106      1562.1
lost to ATV IX only               237106      1562.1
lost to all IX                   237106      1562.1

Potential Interfering Stations Included in above Scenario      11

43A CA CHICO          BPCDT      20070124AKD  CP
43A CA CLOVIS         DTVPLN     DTVP1527    PLN
43A CA SACRAMENTO     BNPEDT     20030922AFW  APP
44A CA OAKLAND        USERRECORD01  APP

Percent new IX =      0.0045%

Result key:      36

```

Figure 3

Scenario 12 Affected station 5  
Before Analysis

Results for: 43A CA SAN MATEO BLEDT 20030822AFZ LIC  
HAAT 428.0 m, ATV ERP 536.0 kW

	POPULATION	AREA (sq km)
within Noise Limited Contour	6850570	27098.1
not affected by terrain losses	6240615	21829.4
lost to NTSC IX	0	0.0
lost to additional IX by ATV	70117	755.0
lost to ATV IX only	70117	755.0
lost to all IX	70117	755.0

Potential Interfering Stations Included in above Scenario 12

43A CA CHICO	BPCDT	20070124AKD	CP
43A CA CLOVIS	DTVPLN	DTVP1527	PLN

After Analysis

Results for: 43A CA SAN MATEO BLEDT 20030822AFZ LIC  
HAAT 428.0 m, ATV ERP 536.0 kW

	POPULATION	AREA (sq km)
within Noise Limited Contour	6850570	27098.1
not affected by terrain losses	6240615	21829.4
lost to NTSC IX	0	0.0
lost to additional IX by ATV	70390	787.1
lost to ATV IX only	70390	787.1
lost to all IX	70390	787.1

Potential Interfering Stations Included in above Scenario 12

43A CA CHICO	BPCDT	20070124AKD	CP
43A CA CLOVIS	DTVPLN	DTVP1527	PLN
44A CA OAKLAND	USERRECORD01		APP

Percent new IX = 0.0044%

Result key: 37

Scenario 13 Affected station 5  
Before Analysis

Results for: 43A CA SAN MATEO BLEDT 20030822AFZ LIC  
HAAT 428.0 m, ATV ERP 536.0 kW

	POPULATION	AREA (sq km)
within Noise Limited Contour	6850570	27098.1
not affected by terrain losses	6240615	21829.4
lost to NTSC IX	0	0.0
lost to additional IX by ATV	290539	1489.8
lost to ATV IX only	290539	1489.8
lost to all IX	290539	1489.8

Potential Interfering Stations Included in above Scenario 13

43A CA CHICO	DTVPLN	DTVP1526	PLN
43A CA CLOVIS	BMPCDT	20080620AAE	CP
43A CA SACRAMENTO	BNPEDT	20030922AFV	APP

After Analysis

Results for: 43A CA SAN MATEO BLEDT 20030822AFZ LIC  
HAAT 428.0 m, ATV ERP 536.0 kW

	POPULATION	AREA (sq km)
within Noise Limited Contour	6850570	27098.1
not affected by terrain losses	6240615	21829.4
lost to NTSC IX	0	0.0
lost to additional IX by ATV	290812	1522.0
lost to ATV IX only	290812	1522.0
lost to all IX	290812	1522.0

Potential Interfering Stations Included in above Scenario 13

43A CA CHICO	DTVPLN	DTVP1526	PLN
43A CA CLOVIS	BMPCDT	20080620AAE	CP
43A CA SACRAMENTO	BNPEDT	20030922AFV	APP
44A CA OAKLAND	USERRECORD01		APP

Percent new IX = 0.0046%

Result key: 38

Figure 3

Scenario 14 Affected station 5  
Before Analysis

Results for: 43A CA SAN MATEO BLEDT 20030822AFZ LIC  
HAAT 428.0 m, ATV ERP 536.0 kW

	POPULATION	AREA (sq km)
within Noise Limited Contour	6850570	27098.1
not affected by terrain losses	6240615	21829.4
lost to NTSC IX	0	0.0
lost to additional IX by ATV	292888	1678.6
lost to ATV IX only	292888	1678.6
lost to all IX	292888	1678.6

Potential Interfering Stations Included in above Scenario 14

43A CA CHICO	DTVPLN	DTVP1526	PLN
43A CA CLOVIS	BMPCDT	20080620AAE	CP
43A CA SACRAMENTO	BNPEDT	20030922AFW	APP

After Analysis

Results for: 43A CA SAN MATEO BLEDT 20030822AFZ LIC  
HAAT 428.0 m, ATV ERP 536.0 kW

	POPULATION	AREA (sq km)
within Noise Limited Contour	6850570	27098.1
not affected by terrain losses	6240615	21829.4
lost to NTSC IX	0	0.0
lost to additional IX by ATV	293161	1710.7
lost to ATV IX only	293161	1710.7
lost to all IX	293161	1710.7

Potential Interfering Stations Included in above Scenario 14

43A CA CHICO	DTVPLN	DTVP1526	PLN
43A CA CLOVIS	BMPCDT	20080620AAE	CP
43A CA SACRAMENTO	BNPEDT	20030922AFW	APP
44A CA OAKLAND	USERRECORD01		APP

Percent new IX = 0.0046%

Result key: 39

Scenario 15 Affected station 5  
Before Analysis

Results for: 43A CA SAN MATEO BLEDT 20030822AFZ LIC  
HAAT 428.0 m, ATV ERP 536.0 kW

	POPULATION	AREA (sq km)
within Noise Limited Contour	6850570	27098.1
not affected by terrain losses	6240615	21829.4
lost to NTSC IX	0	0.0
lost to additional IX by ATV	172395	1052.1
lost to ATV IX only	172395	1052.1
lost to all IX	172395	1052.1

Potential Interfering Stations Included in above Scenario 15

43A CA CHICO	DTVPLN	DTVP1526	PLN
43A CA CLOVIS	BMPCDT	20080620AAE	CP

After Analysis

Results for: 43A CA SAN MATEO BLEDT 20030822AFZ LIC  
HAAT 428.0 m, ATV ERP 536.0 kW

	POPULATION	AREA (sq km)
within Noise Limited Contour	6850570	27098.1
not affected by terrain losses	6240615	21829.4
lost to NTSC IX	0	0.0
lost to additional IX by ATV	172668	1084.2
lost to ATV IX only	172668	1084.2
lost to all IX	172668	1084.2

Potential Interfering Stations Included in above Scenario 15

43A CA CHICO	DTVPLN	DTVP1526	PLN
43A CA CLOVIS	BMPCDT	20080620AAE	CP
44A CA OAKLAND	USERRECORD01		APP

Percent new IX = 0.0045%

Result key: 40

Figure 3

Scenario 16 Affected station 5  
Before Analysis

Results for: 43A CA SAN MATEO BLEDT 20030822AFZ LIC  
HAAT 428.0 m, ATV ERP 536.0 kW

	POPULATION	AREA (sq km)
within Noise Limited Contour	6850570	27098.1
not affected by terrain losses	6240615	21829.4
lost to NTSC IX	0	0.0
lost to additional IX by ATV	269508	1457.7
lost to ATV IX only	269508	1457.7
lost to all IX	269508	1457.7

Potential Interfering Stations Included in above Scenario 16

43A CA CHICO	DTVPLN	DTVP1526	PLN
43A CA CLOVIS	DTVPLN	DTVP1527	PLN
43A CA SACRAMENTO	BNPEDT	20030922AFV	APP

After Analysis

Results for: 43A CA SAN MATEO BLEDT 20030822AFZ LIC  
HAAT 428.0 m, ATV ERP 536.0 kW

	POPULATION	AREA (sq km)
within Noise Limited Contour	6850570	27098.1
not affected by terrain losses	6240615	21829.4
lost to NTSC IX	0	0.0
lost to additional IX by ATV	269781	1489.8
lost to ATV IX only	269781	1489.8
lost to all IX	269781	1489.8

Potential Interfering Stations Included in above Scenario 16

43A CA CHICO	DTVPLN	DTVP1526	PLN
43A CA CLOVIS	DTVPLN	DTVP1527	PLN
43A CA SACRAMENTO	BNPEDT	20030922AFV	APP
44A CA OAKLAND	USERRECORD01		APP

Percent new IX = 0.0046%

Result key: 41

Scenario 17 Affected station 5  
Before Analysis

Results for: 43A CA SAN MATEO BLEDT 20030822AFZ LIC  
HAAT 428.0 m, ATV ERP 536.0 kW

	POPULATION	AREA (sq km)
within Noise Limited Contour	6850570	27098.1
not affected by terrain losses	6240615	21829.4
lost to NTSC IX	0	0.0
lost to additional IX by ATV	271857	1642.4
lost to ATV IX only	271857	1642.4
lost to all IX	271857	1642.4

Potential Interfering Stations Included in above Scenario 17

43A CA CHICO	DTVPLN	DTVP1526	PLN
43A CA CLOVIS	DTVPLN	DTVP1527	PLN
43A CA SACRAMENTO	BNPEDT	20030922AFW	APP

After Analysis

Results for: 43A CA SAN MATEO BLEDT 20030822AFZ LIC  
HAAT 428.0 m, ATV ERP 536.0 kW

	POPULATION	AREA (sq km)
within Noise Limited Contour	6850570	27098.1
not affected by terrain losses	6240615	21829.4
lost to NTSC IX	0	0.0
lost to additional IX by ATV	272130	1674.6
lost to ATV IX only	272130	1674.6
lost to all IX	272130	1674.6

Potential Interfering Stations Included in above Scenario 17

43A CA CHICO	DTVPLN	DTVP1526	PLN
43A CA CLOVIS	DTVPLN	DTVP1527	PLN
43A CA SACRAMENTO	BNPEDT	20030922AFW	APP
44A CA OAKLAND	USERRECORD01		APP

Percent new IX = 0.0046%

Figure 3

Result key: 42  
Scenario 18 Affected station 5  
Before Analysis

Results for: 43A CA SAN MATEO BLEDT 20030822AFZ LIC  
HAAT 428.0 m, ATV ERP 536.0 kW

	POPULATION	AREA (sq km)
within Noise Limited Contour	6850570	27098.1
not affected by terrain losses	6240615	21829.4
lost to NTSC IX	0	0.0
lost to additional IX by ATV	151291	1007.9
lost to ATV IX only	151291	1007.9
lost to all IX	151291	1007.9

Potential Interfering Stations Included in above Scenario 18

43A CA CHICO	DTVPLN	DTVP1526	PLN
43A CA CLOVIS	DTVPLN	DTVP1527	PLN

After Analysis

Results for: 43A CA SAN MATEO BLEDT 20030822AFZ LIC  
HAAT 428.0 m, ATV ERP 536.0 kW

	POPULATION	AREA (sq km)
within Noise Limited Contour	6850570	27098.1
not affected by terrain losses	6240615	21829.4
lost to NTSC IX	0	0.0
lost to additional IX by ATV	151564	1040.1
lost to ATV IX only	151564	1040.1
lost to all IX	151564	1040.1

Potential Interfering Stations Included in above Scenario 18

43A CA CHICO	DTVPLN	DTVP1526	PLN
43A CA CLOVIS	DTVPLN	DTVP1527	PLN
44A CA OAKLAND	USERRECORD01		APP

Percent new IX = 0.0045%

Result key: 43  
Scenario 19 Affected station 5  
Before Analysis

Results for: 43A CA SAN MATEO BLEDT 20030822AFZ LIC  
HAAT 428.0 m, ATV ERP 536.0 kW

	POPULATION	AREA (sq km)
within Noise Limited Contour	6850570	27098.1
not affected by terrain losses	6240615	21829.4
lost to NTSC IX	0	0.0
lost to additional IX by ATV	252847	1337.2
lost to ATV IX only	252847	1337.2
lost to all IX	252847	1337.2

Potential Interfering Stations Included in above Scenario 19

43A CA CHICO	BLCDDT	20060315AEZ	LIC
43A CA CLOVIS	BMPCDDT	20080620AAE	CP
43A CA SACRAMENTO	BNPEDT	20030922AFV	APP

After Analysis

Results for: 43A CA SAN MATEO BLEDT 20030822AFZ LIC  
HAAT 428.0 m, ATV ERP 536.0 kW

	POPULATION	AREA (sq km)
within Noise Limited Contour	6850570	27098.1
not affected by terrain losses	6240615	21829.4
lost to NTSC IX	0	0.0
lost to additional IX by ATV	253120	1369.4
lost to ATV IX only	253120	1369.4
lost to all IX	253120	1369.4

Potential Interfering Stations Included in above Scenario 19

43A CA CHICO	BLCDDT	20060315AEZ	LIC
43A CA CLOVIS	BMPCDDT	20080620AAE	CP
43A CA SACRAMENTO	BNPEDT	20030922AFV	APP
44A CA OAKLAND	USERRECORD01		APP

Percent new IX = 0.0046%

Figure 3

Result key: 44  
Scenario 20 Affected station 5  
Before Analysis

Results for: 43A CA SAN MATEO BLEDT 20030822AFZ LIC  
HAAT 428.0 m, ATV ERP 536.0 kW

	POPULATION	AREA (sq km)
within Noise Limited Contour	6850570	27098.1
not affected by terrain losses	6240615	21829.4
lost to NTSC IX	0	0.0
lost to additional IX by ATV	257747	1550.1
lost to ATV IX only	257747	1550.1
lost to all IX	257747	1550.1

Potential Interfering Stations Included in above Scenario 20

43A CA CHICO	BLCDT	20060315AEZ	LIC
43A CA CLOVIS	BMPCDT	20080620AAE	CP
43A CA SACRAMENTO	BNPEDT	20030922AFW	APP

After Analysis

Results for: 43A CA SAN MATEO BLEDT 20030822AFZ LIC  
HAAT 428.0 m, ATV ERP 536.0 kW

	POPULATION	AREA (sq km)
within Noise Limited Contour	6850570	27098.1
not affected by terrain losses	6240615	21829.4
lost to NTSC IX	0	0.0
lost to additional IX by ATV	258020	1582.2
lost to ATV IX only	258020	1582.2
lost to all IX	258020	1582.2

Potential Interfering Stations Included in above Scenario 20

43A CA CHICO	BLCDT	20060315AEZ	LIC
43A CA CLOVIS	BMPCDT	20080620AAE	CP
43A CA SACRAMENTO	BNPEDT	20030922AFW	APP
44A CA OAKLAND	USERRECORD01		APP

Percent new IX = 0.0046%

Result key: 45  
Scenario 21 Affected station 5  
Before Analysis

Results for: 43A CA SAN MATEO BLEDT 20030822AFZ LIC  
HAAT 428.0 m, ATV ERP 536.0 kW

	POPULATION	AREA (sq km)
within Noise Limited Contour	6850570	27098.1
not affected by terrain losses	6240615	21829.4
lost to NTSC IX	0	0.0
lost to additional IX by ATV	90759	726.8
lost to ATV IX only	90759	726.8
lost to all IX	90759	726.8

Potential Interfering Stations Included in above Scenario 21

43A CA CHICO	BLCDT	20060315AEZ	LIC
43A CA CLOVIS	BMPCDT	20080620AAE	CP

After Analysis

Results for: 43A CA SAN MATEO BLEDT 20030822AFZ LIC  
HAAT 428.0 m, ATV ERP 536.0 kW

	POPULATION	AREA (sq km)
within Noise Limited Contour	6850570	27098.1
not affected by terrain losses	6240615	21829.4
lost to NTSC IX	0	0.0
lost to additional IX by ATV	91032	759.0
lost to ATV IX only	91032	759.0
lost to all IX	91032	759.0

Potential Interfering Stations Included in above Scenario 21

43A CA CHICO	BLCDT	20060315AEZ	LIC
43A CA CLOVIS	BMPCDT	20080620AAE	CP
44A CA OAKLAND	USERRECORD01		APP

Percent new IX = 0.0044%



Figure 3

Result key: 46  
Scenario 22 Affected station 5  
Before Analysis

Results for: 43A CA SAN MATEO BLEDT 20030822AFZ LIC  
HAAT 428.0 m, ATV ERP 536.0 kW

	POPULATION	AREA (sq km)
within Noise Limited Contour	6850570	27098.1
not affected by terrain losses	6240615	21829.4
lost to NTSC IX	0	0.0
lost to additional IX by ATV	231816	1301.1
lost to ATV IX only	231816	1301.1
lost to all IX	231816	1301.1

Potential Interfering Stations Included in above Scenario 22

43A CA CHICO	BLCDT	20060315AEZ	LIC
43A CA CLOVIS	DTVPLN	DTVP1527	PLN
43A CA SACRAMENTO	BNPEDT	20030922AFV	APP

After Analysis

Results for: 43A CA SAN MATEO BLEDT 20030822AFZ LIC  
HAAT 428.0 m, ATV ERP 536.0 kW

	POPULATION	AREA (sq km)
within Noise Limited Contour	6850570	27098.1
not affected by terrain losses	6240615	21829.4
lost to NTSC IX	0	0.0
lost to additional IX by ATV	232089	1333.2
lost to ATV IX only	232089	1333.2
lost to all IX	232089	1333.2

Potential Interfering Stations Included in above Scenario 22

43A CA CHICO	BLCDT	20060315AEZ	LIC
43A CA CLOVIS	DTVPLN	DTVP1527	PLN
43A CA SACRAMENTO	BNPEDT	20030922AFV	APP
44A CA OAKLAND	USERRECORD01		APP

Percent new IX = 0.0045%

Result key: 47  
Scenario 23 Affected station 5  
Before Analysis

Results for: 43A CA SAN MATEO BLEDT 20030822AFZ LIC  
HAAT 428.0 m, ATV ERP 536.0 kW

	POPULATION	AREA (sq km)
within Noise Limited Contour	6850570	27098.1
not affected by terrain losses	6240615	21829.4
lost to NTSC IX	0	0.0
lost to additional IX by ATV	236716	1517.9
lost to ATV IX only	236716	1517.9
lost to all IX	236716	1517.9

Potential Interfering Stations Included in above Scenario 23

43A CA CHICO	BLCDT	20060315AEZ	LIC
43A CA CLOVIS	DTVPLN	DTVP1527	PLN
43A CA SACRAMENTO	BNPEDT	20030922AFW	APP

After Analysis

Results for: 43A CA SAN MATEO BLEDT 20030822AFZ LIC  
HAAT 428.0 m, ATV ERP 536.0 kW

	POPULATION	AREA (sq km)
within Noise Limited Contour	6850570	27098.1
not affected by terrain losses	6240615	21829.4
lost to NTSC IX	0	0.0
lost to additional IX by ATV	236989	1550.1
lost to ATV IX only	236989	1550.1
lost to all IX	236989	1550.1

Potential Interfering Stations Included in above Scenario 23

43A CA CHICO	BLCDT	20060315AEZ	LIC
43A CA CLOVIS	DTVPLN	DTVP1527	PLN
43A CA SACRAMENTO	BNPEDT	20030922AFW	APP
44A CA OAKLAND	USERRECORD01		APP

Figure 3

```

Percent new IX =      0.0045%

Result key:          48
Scenario            24 Affected station          5
Before Analysis

Results for: 43A CA SAN MATEO          BLEDT      20030822AFZ  LIC
HAAT  428.0 m, ATV ERP  536.0 kW
      POPULATION  AREA (sq km)
within Noise Limited Contour      6850570      27098.1
not affected by terrain losses    6240615      21829.4
lost to NTSC IX                   0           0.0
lost to additional IX by ATV      60206       662.6
lost to ATV IX only               60206       662.6
lost to all IX                   60206       662.6

Potential Interfering Stations Included in above Scenario    24

43A CA CHICO          BLCDT      20060315AEZ  LIC
43A CA CLOVIS         DTVPLN     DTVP1527    PLN

After Analysis

Results for: 43A CA SAN MATEO          BLEDT      20030822AFZ  LIC
HAAT  428.0 m, ATV ERP  536.0 kW
      POPULATION  AREA (sq km)
within Noise Limited Contour      6850570      27098.1
not affected by terrain losses    6240615      21829.4
lost to NTSC IX                   0           0.0
lost to additional IX by ATV      60479       694.7
lost to ATV IX only               60479       694.7
lost to all IX                   60479       694.7

Potential Interfering Stations Included in above Scenario    24

43A CA CHICO          BLCDT      20060315AEZ  LIC
43A CA CLOVIS         DTVPLN     DTVP1527    PLN
44A CA OAKLAND        USERRECORD01  APP

Percent new IX =      0.0044%

Worst case new IX      0.0046% Scenario    14

#####

Analysis of Interference to Affected Station    6

Analysis of current record
Channel    Call      City/State      Application Ref. No.
  44      KRXI-TV    RENO NV        BPCDT      -20080619AIG

Stations Potentially Affecting This Station

Chan  Call      City/State      Dist(km) Status Application Ref. No.
  43  KHSL-TV    CHICO CA        158.0   CP      BPCDT      -20070124AKD
  43  KHSL-TV    CHICO CA        158.0   PLN     DTVPLN     -DTV1526
  43  KHSL-TV    CHICO CA        158.0   LIC     BLCDT      -20060315AEZ
  43  NEW       SACRAMENTO CA   165.7   APP     BNPEDT     -20030922AFV
  43  NEW       SACRAMENTO CA   133.4   APP     BNPEDT     -20030922AFW
  44  KTVU      OAKLAND CA      299.3   PLN     DTVPLN     -DTV1566
  44  KTVU      OAKLAND CA      299.3   APP     USERRECORD-01

Total scenarios =    1

Result key:          49
Scenario            1 Affected station          6
Before Analysis

Results for: 44A NV RENO          BPCDT      20080619AIG  APP
HAAT  854.0 m, ATV ERP  700.0 kW
      POPULATION  AREA (sq km)
within Noise Limited Contour      732740      50230.5
not affected by terrain losses    515511      30066.9
lost to NTSC IX                   0           0.0
lost to additional IX by ATV      115         204.5
lost to ATV IX only               115         204.5

```

Figure 3

```

lost to all IX                115        204.5

Potential Interfering Stations Included in above Scenario      1

44A CA OAKLAND              DTVPLN      DTVP1566      PLN

After Analysis

Results for: 44A NV RENO              BPCDT      20080619AIG  APP
HAAT  854.0 m, ATV ERP  700.0 kW
      POPULATION      AREA (sq km)
within Noise Limited Contour      732740      50230.5
not affected by terrain losses      515511      30066.9
lost to NTSC IX                    0          0.0
lost to additional IX by ATV        116        212.5
lost to ATV IX only                 116        212.5
lost to all IX                      116        212.5

Potential Interfering Stations Included in above Scenario      1

44A CA OAKLAND              USERRECORD01      APP

Percent new IX =      0.0002%

Worst case new IX      0.0002% Scenario      1

#####

Analysis of Interference to Affected Station      7

Analysis of current record
Channel      Call      City/State      Application Ref. No.
44      KRXI-TV      RENO NV      DTVPLN      -DTVP1588

Stations Potentially Affecting This Station

Chan      Call      City/State      Dist(km) Status      Application Ref. No.
43      KHSL-TV      CHICO CA      158.0      CP      BPCDT      -20070124AKD
43      KHSL-TV      CHICO CA      158.0      PLN      DTVPLN      -DTVP1526
43      KHSL-TV      CHICO CA      158.0      LIC      BLCDDT      -20060315AEZ
43      NEW      SACRAMENTO CA      165.7      APP      BNPEDT      -20030922AFV
43      NEW      SACRAMENTO CA      133.4      APP      BNPEDT      -20030922AFV
44      KTVU      OAKLAND CA      299.3      PLN      DTVPLN      -DTVP1566
44      KTVU      OAKLAND CA      299.3      APP      USERRECORD-01
Proposal causes no interference

#####

Analysis of Interference to Affected Station      8

Analysis of current record
Channel      Call      City/State      Application Ref. No.
44      KRXI-TV      RENO NV      BLCDDT      -20060707ACZ

Stations Potentially Affecting This Station

Chan      Call      City/State      Dist(km) Status      Application Ref. No.
43      KHSL-TV      CHICO CA      158.0      CP      BPCDT      -20070124AKD
43      KHSL-TV      CHICO CA      158.0      PLN      DTVPLN      -DTVP1526
43      KHSL-TV      CHICO CA      158.0      LIC      BLCDDT      -20060315AEZ
43      NEW      SACRAMENTO CA      165.7      APP      BNPEDT      -20030922AFV
43      NEW      SACRAMENTO CA      133.4      APP      BNPEDT      -20030922AFV
44      KTVU      OAKLAND CA      299.3      PLN      DTVPLN      -DTVP1566
44      KTVU      OAKLAND CA      299.3      APP      USERRECORD-01

Total scenarios =      1

Result key:      50
Scenario      1      Affected station      8
Before Analysis

Results for: 44A NV RENO              BLCDDT      20060707ACZ  LIC
HAAT  836.0 m, ATV ERP 1000.0 kW
      POPULATION      AREA (sq km)
within Noise Limited Contour      602660      35479.0

```

Figure 3

```

not affected by terrain losses      410211      20030.2
lost to NTSC IX                    0          0.0
lost to additional IX by ATV        7          72.0
lost to ATV IX only                 7          72.0
lost to all IX                     7          72.0

Potential Interfering Stations Included in above Scenario      1

44A CA OAKLAND              DTVPLN      DTVP1566      PLN

After Analysis

Results for: 44A NV RENO              BLCDT      20060707ACZ      LIC
HAAT 836.0 m, ATV ERP 1000.0 kW
              POPULATION      AREA (sq km)
within Noise Limited Contour      602660      35479.0
not affected by terrain losses      410211      20030.2
lost to NTSC IX                    0          0.0
lost to additional IX by ATV        7          84.0
lost to ATV IX only                 7          84.0
lost to all IX                     7          84.0

Potential Interfering Stations Included in above Scenario      1

44A CA OAKLAND              USERRECORD01      APP

Percent new IX =      0.0000%

Worst case new IX      0.0000% Scenario      1

#####

Analysis of Interference to Affected Station      9

Analysis of current record
Channel      Call      City/State      Application Ref. No.
45      KBCW      SAN FRANCISCO CA      BPCDT      -20080603AAH

Stations Potentially Affecting This Station

Chan      Call      City/State      Dist(km) Status      Application Ref. No.
44      KTVU      OAKLAND CA      0.0      PLN      DTVPLN      -DTVP1566
45      KUVI-TV      BAKERSFIELD CA      419.5      PLN      DTVPLN      -DTVP1603
45      KUVI-TV      BAKERSFIELD CA      419.5      CP MOD      BMPCDT      -20080618AEJ
46      KQCA      STOCKTON CA      101.5      LIC      BLCDT      -20060623AAM
46      KQCA      STOCKTON CA      101.5      PLN      DTVPLN      -DTVP1640
44      KTVU      OAKLAND CA      0.0      APP      USERRECORD-01
Proposal causes no interference

#####

Analysis of Interference to Affected Station      10

Analysis of current record
Channel      Call      City/State      Application Ref. No.
45      KBCW      SAN FRANCISCO CA      DTVPLN      -DTVP1605

Stations Potentially Affecting This Station

Chan      Call      City/State      Dist(km) Status      Application Ref. No.
44      KTVU      OAKLAND CA      0.0      PLN      DTVPLN      -DTVP1566
45      KUVI-TV      BAKERSFIELD CA      419.5      PLN      DTVPLN      -DTVP1603
45      KUVI-TV      BAKERSFIELD CA      419.5      CP MOD      BMPCDT      -20080618AEJ
46      KQCA      STOCKTON CA      101.5      LIC      BLCDT      -20060623AAM
46      KQCA      STOCKTON CA      101.5      PLN      DTVPLN      -DTVP1640
44      KTVU      OAKLAND CA      0.0      APP      USERRECORD-01
Proposal causes no interference

#####

Analysis of Interference to Affected Station      11

Analysis of current record
Channel      Call      City/State      Application Ref. No.

```

Figure 3

```

45      KBCW      SAN FRANCISCO CA      BLCDT      -20020709AAQ

Stations Potentially Affecting This Station

Chan  Call      City/State      Dist(km) Status Application Ref. No.
44  KTVU      OAKLAND CA      0.0  PLN  DTVPLN      -DTVP1566
45  KUVI-TV   BAKERSFIELD CA  419.5 PLN  DTVPLN      -DTVP1603
45  KUVI-TV   BAKERSFIELD CA  419.5 CP MOD BMPCDT      -20080618AEJ
46  KQCA      STOCKTON CA      101.5 LIC  BLCDT      -20060623AAM
46  KQCA      STOCKTON CA      101.5 PLN  DTVPLN      -DTVP1640
44  KTVU      OAKLAND CA      0.0  APP  USERRECORD-01
Proposal causes no interference

#####

Analysis of Interference to Affected Station 12

Analysis of current record
Channel      Call      City/State      Application Ref. No.
46      K46DR      LAKEPORT CA      BSTA      -20061016ADK

Stations Potentially Affecting This Station

Chan  Call      City/State      Dist(km) Status Application Ref. No.
38  KRON-TV   SAN FRANCISCO CA  102.6 PLN  DTVPLN      -DTVP1358
38  KRON-TV   SAN FRANCISCO CA  102.6 CP MOD BMPCDT      -20080619AFU
39  KCNS      SAN FRANCISCO CA  102.6 LIC  BLCDT      -20060221AES
39  KCNS      SAN FRANCISCO CA  102.6 PLN  DTVPLN      -DTVP1394
39  KCNS      SAN FRANCISCO CA  102.6 APP  BPCDT      -20080909ABW
43  NEW       SACRAMENTO CA      129.6 APP  BNPEDT      -20030922AFV
43  KCSM-TV   SAN MATEO CA      102.6 CP  BPEDT      -20080825AAV
43  KCSM-TV   SAN MATEO CA      102.6 PLN  DTVPLN      -DTVP1529
43  KCSM-TV   SAN MATEO CA      102.6 LIC  BLEDT      -20030822AFZ
44  KTVU      OAKLAND CA      102.6 PLN  DTVPLN      -DTVP1566
45  KBCW      SAN FRANCISCO CA  102.6 CP  BPCDT      -20080603AAH
45  KBCW      SAN FRANCISCO CA  102.6 PLN  DTVPLN      -DTVP1605
45  KBCW      SAN FRANCISCO CA  102.6 LIC  BLCDT      -20020709AAQ
46  KION-TV   MONTEREY CA      253.1 LIC  BMLCT      -19820622KG
46  KQCA      STOCKTON CA      108.6 LIC  BLCDT      -20060623AAM
46  KQCA      STOCKTON CA      108.6 PLN  DTVPLN      -DTVP1640
46  KAZR-CA   RENO, ETC NV      247.6 LIC  BLTTA      -20051114AFU
47  KTLN-TV   NOVATO CA      57.7  CP  BPCDT      -19991026ABE
47  KTLN-TV   NOVATO CA      57.7  PLN  DTVPLN      -DTVP1669
48  KSPX      SACRAMENTO CA      108.6 LIC  BLCDT      -20050110ABB
48  KSPX      SACRAMENTO CA      108.6 PLN  DTVPLN      -DTVP1700
49  KSTS      SAN JOSE CA      145.8 LIC  BLCDT      -20030507AAT
49  KSTS      SAN JOSE CA      145.8 PLN  DTVPLN      -DTVP1731
60  KCSM-TV   SAN MATEO CA      110.5 LIC  BLET      -19980730KF
44  KTVU      OAKLAND CA      102.6 APP  USERRECORD-01

Proposed station is beyond the site to
nearest cell evaluation distance

#####

Analysis of Interference to Affected Station 13

Analysis of current record
Channel      Call      City/State      Application Ref. No.
46      K46DR      LAKEPORT CA      BLTT      -19941103IB

Stations Potentially Affecting This Station

Chan  Call      City/State      Dist(km) Status Application Ref. No.
38  KRON-TV   SAN FRANCISCO CA  139.9 PLN  DTVPLN      -DTVP1358
38  KRON-TV   SAN FRANCISCO CA  139.9 CP MOD BMPCDT      -20080619AFU
39  KCNS      SAN FRANCISCO CA  139.9 LIC  BLCDT      -20060221AES
39  KCNS      SAN FRANCISCO CA  139.9 PLN  DTVPLN      -DTVP1394
39  KCNS      SAN FRANCISCO CA  139.9 APP  BPCDT      -20080909ABW
43  KHSL-TV   CHICO CA      140.6 CP  BPCDT      -20070124AKD
43  KHSL-TV   CHICO CA      140.6 PLN  DTVPLN      -DTVP1526
43  KHSL-TV   CHICO CA      140.6 LIC  BLCDT      -20060315AEZ
43  KCSM-TV   SAN MATEO CA      139.9 CP  BPEDT      -20080825AAV
43  KCSM-TV   SAN MATEO CA      139.9 PLN  DTVPLN      -DTVP1529
43  KCSM-TV   SAN MATEO CA      139.9 LIC  BLEDT      -20030822AFZ
44  KTVU      OAKLAND CA      139.9 PLN  DTVPLN      -DTVP1566

```

Figure 3

45	K45AH	UKIAH CA	31.5	LIC	BLTT	-19830125IK
46	KION-TV	MONTEREY CA	290.9	LIC	BMLCT	-19820622KG
46	K46HI	REDDING CA	186.3	LIC	BLTTL	-20040329ABN
46	KQCA	STOCKTON CA	137.1	LIC	BLCDD	-20060623AAM
46	KQCA	STOCKTON CA	137.1	PLN	DTVPLN	-DTVP1640
46	KAZR-CA	RENO, ETC NV	251.2	LIC	BLTTA	-20051114AFU
47	KTLN-TV	NOVATO CA	94.5	CP	BPCDD	-19991026ABE
47	KTLN-TV	NOVATO CA	94.5	PLN	DTVPLN	-DTVP1669
47	K47AL	UKIAH CA	31.5	LIC	BLTTL	-19830223IB
48	KSPX	SACRAMENTO CA	137.1	LIC	BLCDD	-20050110ABB
48	KSPX	SACRAMENTO CA	137.1	PLN	DTVPLN	-DTVP1700
44	KTVU	OAKLAND CA	139.9	APP	USERRECORD-01	

Proposed station is beyond the site to  
nearest cell evaluation distance

#####

#### Analysis of Interference to Affected Station 14

##### Analysis of current record

Channel	Call	City/State	Application Ref. No.
44	KTVU	OAKLAND CA	USERRECORD-01

##### Stations Potentially Affecting This Station

Chan	Call	City/State	Dist(km)	Status	Application Ref. No.
43	NEW	SACRAMENTO CA	136.6	APP	BNPEDT -20030922AFV
43	NEW	SACRAMENTO CA	170.0	APP	BNPEDT -20030922AFW
43	KCSM-TV	SAN MATEO CA	0.0	CP	BPEDT -20080825AAV
43	KCSM-TV	SAN MATEO CA	0.0	PLN	DTVPLN -DTVP1529
43	KCSM-TV	SAN MATEO CA	0.0	LIC	BLEDT -20030822AFZ
44	KRXI-TV	RENO NV	299.3	APP	BPCDD -20080619AIG
44	KRXI-TV	RENO NV	299.3	PLN	DTVPLN -DTVP1588
44	KRXI-TV	RENO NV	299.3	LIC	BLCDD -20060707ACZ
45	KBCW	SAN FRANCISCO CA	0.0	CP	BPCDD -20080603AAH
45	KBCW	SAN FRANCISCO CA	0.0	PLN	DTVPLN -DTVP1605
45	KBCW	SAN FRANCISCO CA	0.0	LIC	BLCDD -20020709AAQ

Total scenarios = 4

Result key: 51  
Scenario 1 Affected station 14  
Before Analysis

Results for: 44A CA OAKLAND USERRECORD01 APP  
HAAT 451.0 m, ATV ERP 850.0 kW

	POPULATION	AREA (sq km)
within Noise Limited Contour	7238611	30152.6
not affected by terrain losses	6415088	24482.7
lost to NTSC IX	0	0.0
lost to additional IX by ATV	1033	84.3
lost to ATV IX only	1033	84.3
lost to all IX	1033	84.3

Potential Interfering Stations Included in above Scenario 1

45A CA SAN FRANCISCO BPCDD 20080603AAH CP

Result key: 52  
Scenario 2 Affected station 14  
Before Analysis

Results for: 44A CA OAKLAND USERRECORD01 APP  
HAAT 451.0 m, ATV ERP 850.0 kW

	POPULATION	AREA (sq km)
within Noise Limited Contour	7238611	30152.6
not affected by terrain losses	6415088	24482.7
lost to NTSC IX	0	0.0
lost to additional IX by ATV	48152	501.9
lost to ATV IX only	48152	501.9
lost to all IX	48152	501.9

Potential Interfering Stations Included in above Scenario 2

43A CA SACRAMENTO	BNPEDT	20030922AFV	APP
44A NV RENO	BPCDD	20080619AIG	APP

Figure 3

```

45A CA SAN FRANCISCO      BPCDT      20080603AAH  CP

Result key:      53
Scenario      3  Affected station      14
Before Analysis

Results for: 44A CA OAKLAND      USERRECORD01      APP
  HAAT  451.0 m, ATV ERP  850.0 kW
                POPULATION      AREA (sq km)
  within Noise Limited Contour      7238611      30152.6
  not affected by terrain losses      6415088      24482.7
  lost to NTSC IX                      0          0.0
  lost to additional IX by ATV      49644          598.3
  lost to ATV IX only              49644          598.3
  lost to all IX                   49644          598.3

Potential Interfering Stations Included in above Scenario      3

43A CA SACRAMENTO      BNPEDT      20030922AFW  APP
44A NV RENO      BPCDT      20080619AIG  APP
45A CA SAN FRANCISCO      BPCDT      20080603AAH  CP

Result key:      54
Scenario      4  Affected station      14
Before Analysis

Results for: 44A CA OAKLAND      USERRECORD01      APP
  HAAT  451.0 m, ATV ERP  850.0 kW
                POPULATION      AREA (sq km)
  within Noise Limited Contour      7238611      30152.6
  not affected by terrain losses      6415088      24482.7
  lost to NTSC IX                      0          0.0
  lost to additional IX by ATV      48149          493.9
  lost to ATV IX only              48149          493.9
  lost to all IX                   48149          493.9

Potential Interfering Stations Included in above Scenario      4

44A NV RENO      BPCDT      20080619AIG  APP
45A CA SAN FRANCISCO      BPCDT      20080603AAH  CP

Proposal fails scenario      2  received IX increased by      0.7%
Proposal fails scenario      3  received IX increased by      0.8%
Proposal fails scenario      4  received IX increased by      0.7%

Proposed station below MX due to received interference
44A CA OAKLAND      USERRECORD01      APP

Proposal MX with group in scenario      2 of station      14

Proposed station below MX due to received interference
44A CA OAKLAND      USERRECORD01      APP

Proposal MX with group in scenario      3 of station      14

Proposed station below MX due to received interference
44A CA OAKLAND      USERRECORD01      APP

Proposal MX with group in scenario      4 of station      14

#####
FINISHED FINISHED FINISHED FINISHED FINISHED FINISHED

```