

**University of Massachusetts Boston
New FM Broadcast Facility Proposal for Milford, New Hampshire**

Exhibit 19 for Section VII / 15.e

TV Channel 6 Protection

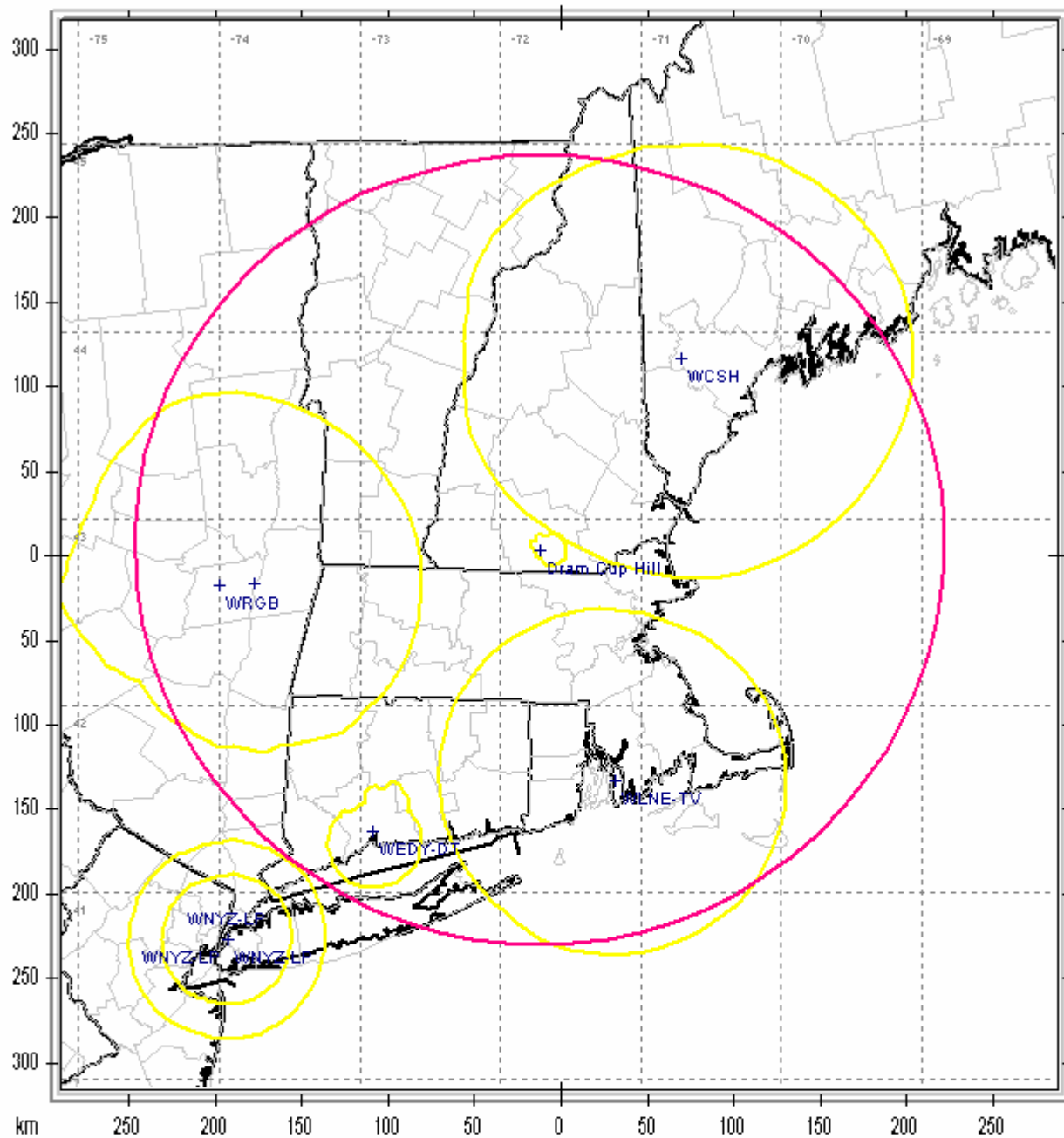
Pursuant to 47 CFR 73.525 (a) Table A, these TV Channel 6 stations are within 235 kilometers of the proposed Dram Cup Hill facility: (see pink contour on next page's map)

- WCSH Portland, ME
- WLNE New Bedford, MA
- WRGB Schenectady, NY
- WEDY-DT New Haven, CT

See the accompanying contour map in this exhibit for a visual reference for contour overlap. Pursuant to 73.525 (e)(1)(iii), the 62.5dBu F(50,10) contour is used for the Dram Cup Hill facility, for all TV6 facilities the 47dBu F(50,50) contour is used.

There is no overlap with any of the relevant TV6 facilities except for WCSH. The overlap with WCSH is limited to 550 persons, which is below the 3000 person limit allowed under 73.525 (c).

Dram Cup Hill Facility 88.7 / Ch.204 TV6 Protection



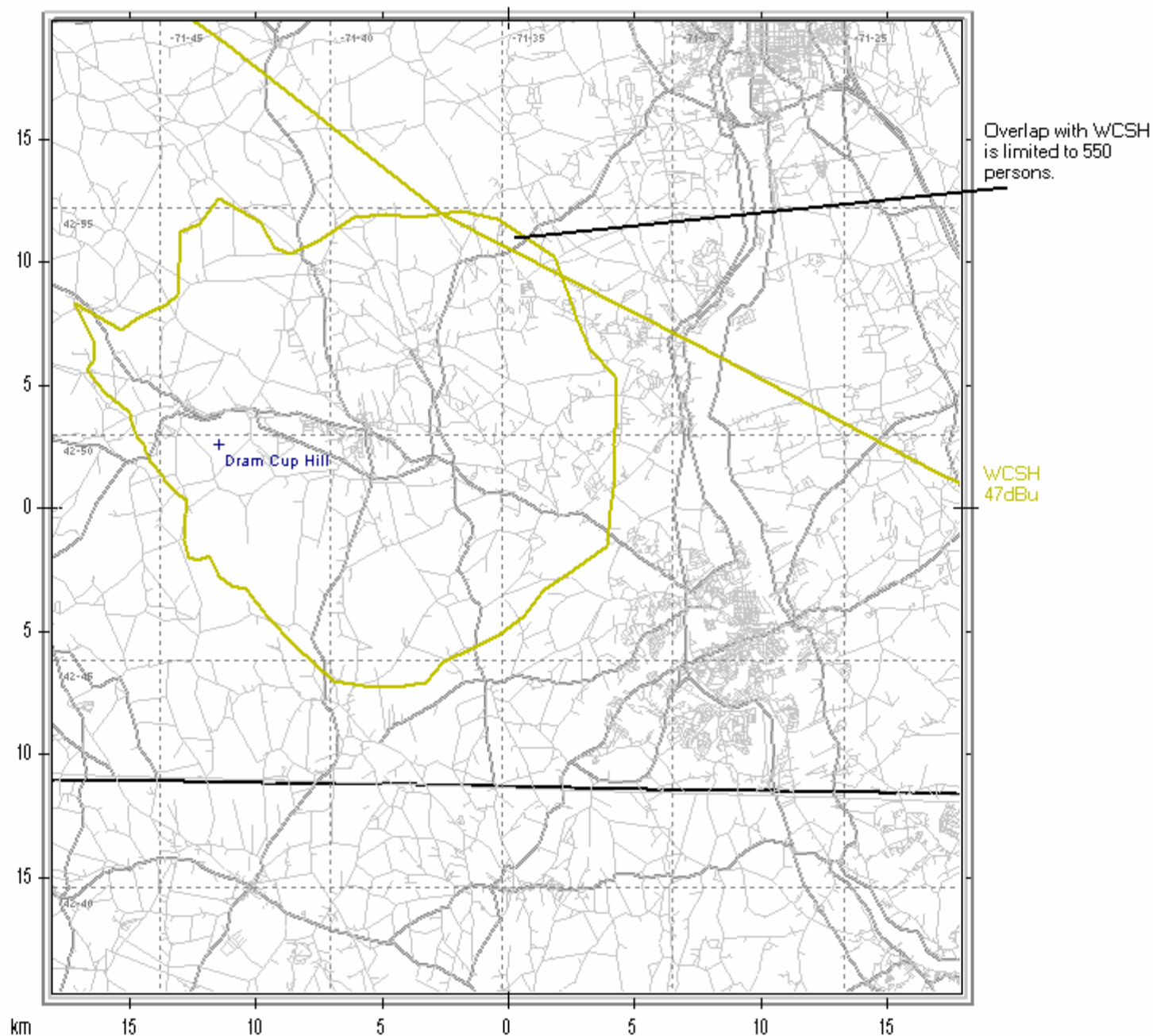
TV6 Protection = Yellow=62.5dBu (Other Stations=47dBu F50.50)

County Borders State Borders Lat/Lon Grid

Map Scale: 1:4000000 1 cm = 40.00 km V/H Size: 632.74 x 575.83 km

Pink = 235km radius of relevance

Dram Cup Hill Facility 88.7 / Ch.204 TV6 Protection



TV6 Protection = Yellow=62.5dBu (Other Stations=47dBu F50.50)

County Borders State Borders Highways Streets Lat/Lon Grid

Map Scale: 1:250000 1 cm = 2.50 km V/H Size: 39.55 x 35.99 km

Pink = 235km radius of relevance