

## W268AZ - MINOR CHANGE TO LICENSED FACILITY

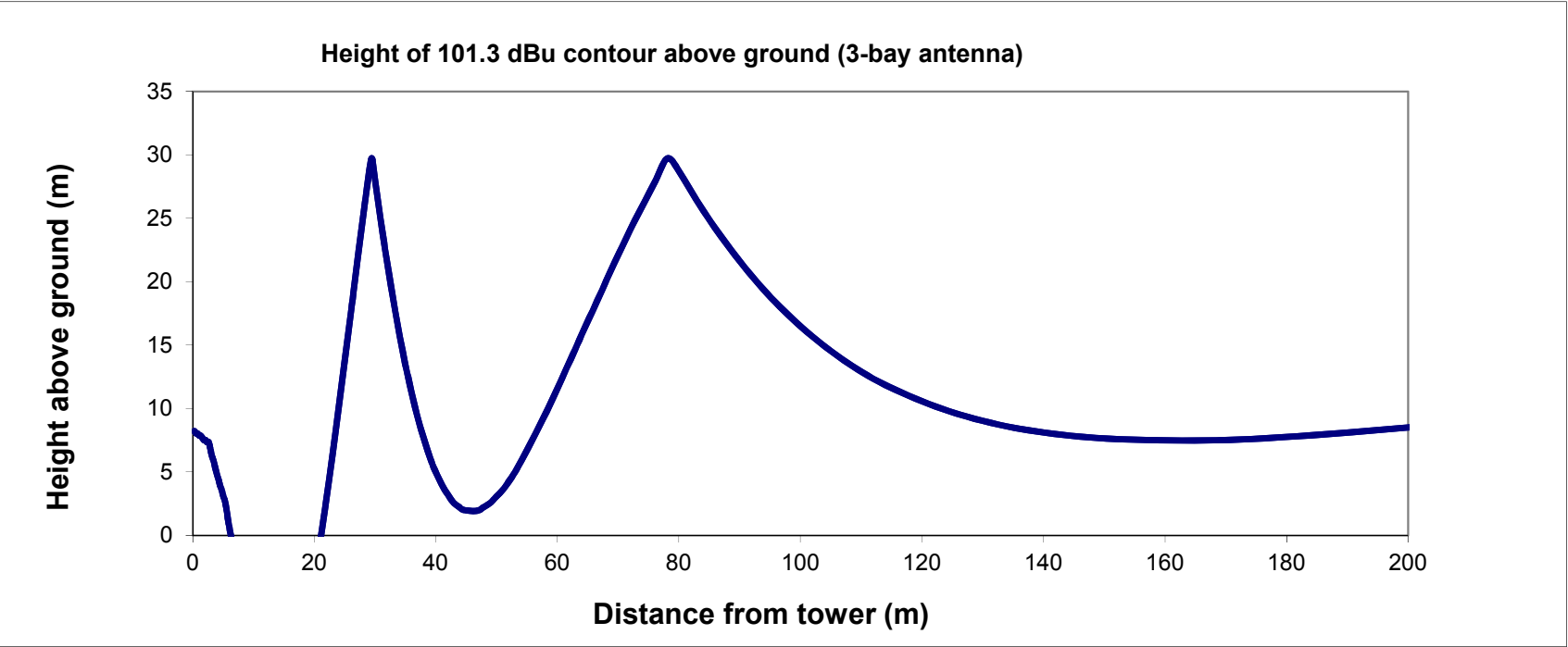
Demonstration of 60 dBu contour within the 'greater' of 2 mV or 25-mile radius of WRRL-AM

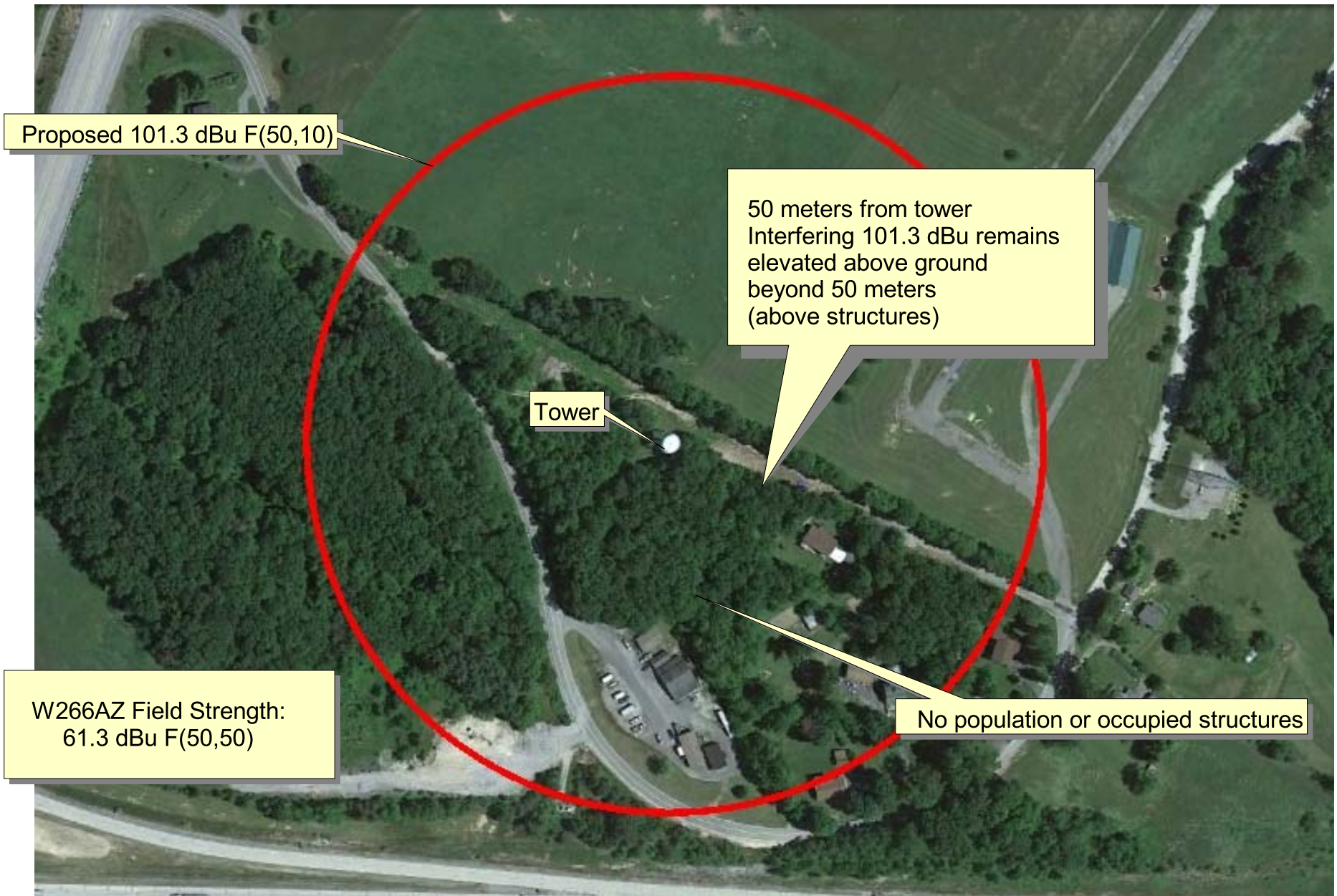
Figure 1

**Table 1**  
**W268AZ - MINOR CHANGE TO LICENSED FACILITY**  
**Channel Study**

Chan	Class	Call Letters	Type	Status	City	State	Country	Owner	Distance (km)	Bearing TO (deg)	Req. Dist. (km)	Clearance (km)	Field Strength (dBu)
265	A	WKOY-FM	FM	LIC	PRINCETON	WV	US	ALPHA MEDIA LICENSEE LLC	59.3	191.0	28.9	30.4	61.3
266	D	W266AZ	FX	LIC	BECKLEY	WV	US	SOUTHERN COMMUNICATIONS CORPORA	12.4	242.4	13.6	-1.2	
267	A	WZFM	FM	LIC	NARROWS	VA	US	WZFM, LLC	57.4	157.3	33.6	23.8	
268	D	W268AZ	FX	LIC	BECKLEY	WV	US	CHRISTI LILLY	13.3	295.8	31.4	-18.1	(same as applicant)
268	D	W268AZ	FX	CP	BECKLEY	WV	US	CHRISTI LILLY	18.7	25.3	80.6	-61.9	
269	L1	WXTH-LP	FL	LIC	RICHWOOD	WV	US	RIVERSIDE BAPTIST CHURCH	67.0	42.4	17.2	49.8	
270	B	WVOW-FM	FM	LIC	LOGAN	WV	US	LOGAN BROADCASTING CORP.	80.7	276.7	58.4	22.3	

NOTE: (with respect to W266AZ) 2nd adjacent W266AZ has a field strength of 61.3 dBu F(50,50) at the proposed site. Therefore the proposed translator's interfering contour is the 101.3 dBu F(50,10) contour. The proposed translator's 101.3 dBu F(50,10) does not include any structures or population. Therefore this proposal is compliant with the allowance of Rule 74.1204(d). (See FIGURE 2 map attached)





**W268AZ BECKLEY, WV**  
**MINOR CHANGE**

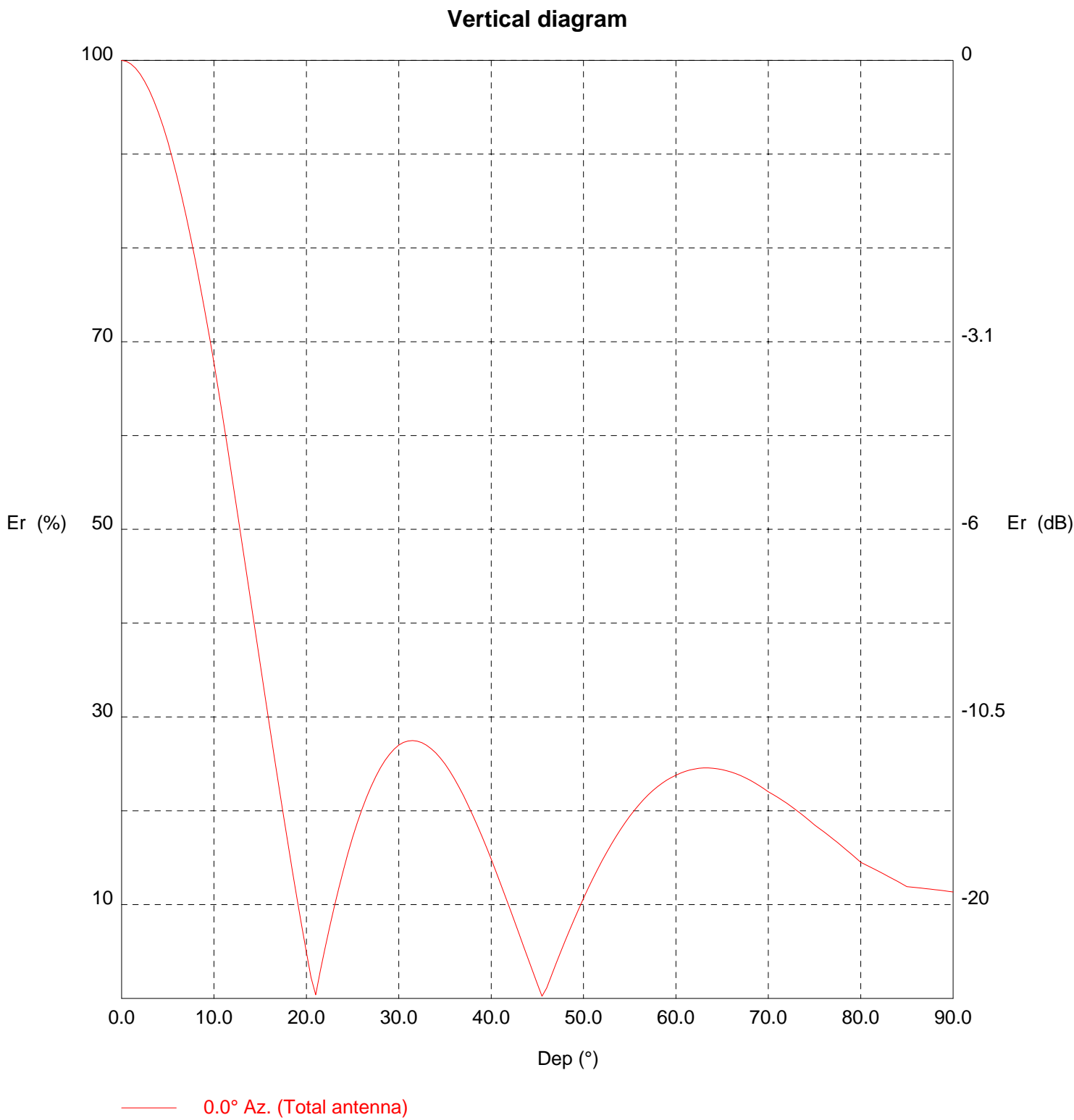
**2nd adjacent channel interference exhibit with respect to W266AZ**



**Radio Data Services**

TX station: BKG77/3 GENERIC  
Frequency: 100.00 MHz

Site name:



TX station: BKG77/3 GENERIC

Site name:

Frequency: 100.00 MHz

## Vertical diagram at an azimuth of 0° degrees

Dep (°)	Er (%)	ERP (KW)	Dep (°)	Er (%)	ERP (KW)	Dep (°)	Er (%)	ERP (KW)
0.0	100.0	1.37	30.0	27.0	0.10	60.0	23.8	0.08
0.5	99.9	1.37	30.5	27.3	0.10	60.5	24.0	0.08
1.0	99.6	1.36	31.0	27.4	0.10	61.0	24.2	0.08
1.5	99.2	1.35	31.5	27.5	0.10	61.5	24.3	0.08
2.0	98.5	1.33	32.0	27.4	0.10	62.0	24.5	0.08
2.5	97.8	1.31	32.5	27.3	0.10	62.5	24.5	0.08
3.0	96.8	1.28	33.0	27.0	0.10	63.0	24.6	0.08
3.5	95.7	1.26	33.5	26.6	0.10	63.5	24.6	0.08
4.0	94.4	1.22	34.0	26.2	0.09	64.0	24.5	0.08
4.5	92.9	1.18	34.5	25.6	0.09	64.5	24.5	0.08
5.0	91.3	1.14	35.0	25.0	0.09	65.0	24.4	0.08
5.5	89.5	1.10	35.5	24.2	0.08	65.5	24.3	0.08
6.0	87.6	1.05	36.0	23.4	0.08	66.0	24.1	0.08
6.5	85.5	1.00	36.5	22.5	0.07	66.5	23.9	0.08
7.0	83.3	0.95	37.0	21.6	0.06	67.0	23.7	0.08
7.5	81.0	0.90	37.5	20.6	0.06	67.5	23.5	0.08
8.0	78.6	0.85	38.0	19.5	0.05	68.0	23.3	0.07
8.5	76.0	0.79	38.5	18.4	0.05	68.5	23.0	0.07
9.0	73.4	0.74	39.0	17.3	0.04	69.0	22.7	0.07
9.5	70.6	0.68	39.5	16.1	0.04	69.5	22.4	0.07
10.0	67.8	0.63	40.0	14.8	0.03	70.0	22.0	0.07
10.5	64.7	0.57	40.5	13.6	0.03	70.5	21.7	0.06
11.0	61.6	0.52	41.0	12.3	0.02	71.0	21.4	0.06
11.5	58.5	0.47	41.5	11.0	0.02	71.5	21.1	0.06
12.0	55.3	0.42	42.0	9.6	0.01	72.0	20.8	0.06
12.5	52.1	0.37	42.5	8.3	0.01	72.5	20.4	0.06
13.0	48.8	0.33	43.0	6.9	0.01	73.0	20.1	0.06
13.5	45.5	0.28	43.5	5.6	0.00	73.5	19.7	0.05
14.0	42.2	0.24	44.0	4.2	0.00	74.0	19.3	0.05
14.5	38.9	0.21	44.5	2.9	0.00	74.5	18.9	0.05
15.0	35.7	0.17	45.0	1.5	0.00	75.0	18.5	0.05
15.5	32.4	0.14	45.5	0.2	0.00	75.5	18.1	0.05
16.0	29.1	0.12	46.0	1.1	0.00	76.0	17.8	0.04
16.5	25.9	0.09	46.5	2.4	0.00	76.5	17.4	0.04
17.0	22.7	0.07	47.0	3.6	0.00	77.0	17.0	0.04
17.5	19.6	0.05	47.5	4.9	0.00	77.5	16.6	0.04
18.0	16.5	0.04	48.0	6.1	0.01	78.0	16.2	0.04
18.5	13.5	0.02	48.5	7.3	0.01	78.5	15.8	0.03
19.0	10.5	0.02	49.0	8.5	0.01	79.0	15.4	0.03
19.5	7.7	0.01	49.5	9.6	0.01	79.5	14.9	0.03
20.0	4.9	0.00	50.0	10.7	0.02	80.0	14.5	0.03
20.5	2.2	0.00	50.5	11.7	0.02	80.5	14.3	0.03
21.0	0.4	0.00	51.0	12.7	0.02	81.0	14.0	0.03
21.5	2.9	0.00	51.5	13.7	0.03	81.5	13.8	0.03
22.0	5.3	0.00	52.0	14.7	0.03	82.0	13.5	0.03
22.5	7.5	0.01	52.5	15.6	0.03	82.5	13.3	0.02
23.0	9.7	0.01	53.0	16.4	0.04	83.0	13.0	0.02
23.5	11.7	0.02	53.5	17.2	0.04	83.5	12.7	0.02
24.0	13.7	0.03	54.0	18.0	0.04	84.0	12.5	0.02
24.5	15.5	0.03	54.5	18.7	0.05	84.5	12.2	0.02
25.0	17.1	0.04	55.0	19.4	0.05	85.0	11.9	0.02
25.5	18.7	0.05	55.5	20.1	0.06	85.5	11.9	0.02
26.0	20.1	0.06	56.0	20.7	0.06	86.0	11.8	0.02
26.5	21.4	0.06	56.5	21.2	0.06	86.5	11.8	0.02
27.0	22.6	0.07	57.0	21.7	0.06	87.0	11.7	0.02
27.5	23.6	0.08	57.5	22.2	0.07	87.5	11.6	0.02
28.0	24.5	0.08	58.0	22.6	0.07	88.0	11.6	0.02
28.5	25.3	0.09	58.5	22.9	0.07	88.5	11.5	0.02
29.0	26.0	0.09	59.0	23.3	0.07	89.0	11.5	0.02
29.5	26.6	0.10	59.5	23.5	0.08	89.5	11.4	0.02