

TECHNICAL EXHIBIT  
APPLICATION FOR FM CONSTRUCTION PERMIT  
BEATTY, NEVADA

MARCH 9, 2006

CH 261C    100 KW (MAX-DA)    514 M

TECHNICAL EXHIBIT  
APPLICATION FOR FM CONSTRUCTION PERMIT  
BEATTY, NEVADA  
CH 261C    100 KW (MAX-DA)    514 M

Table of Contents

	Technical Narrative
Figure 1	Map of Proposed Transmitter Site
Figure 2	Sketch of Antenna and Supporting Structure
Figure 3	Map of Predicted Coverage Contours
Figure 4	Allocation Study

TECHNICAL EXHIBIT  
APPLICATION FOR FM CONSTRUCTION PERMIT  
BEATTY, NEVADA  
CH 261C    100 KW (MAX-DA)    514 M

Technical Narrative

The technical exhibit of which this narrative is part was prepared in support of an application for a new FM radio station assigned to Beatty, Nevada.

Proposed Transmitter Location

A map showing the transmitter site location is provided in Figure 1. A sketch showing the proposed antenna and supporting structure is shown on Figure 2. It appears that no Antenna Registration Number is necessary as the supporting structure overall height is 200 feet or less and not located near any known airport and/or heliports.

Interference Concerns

The 115 dBu predicted "blanketing" contour of the proposed station would extend radially 4 kilometers from the transmitting site. No interference is expected as the proposed transmitter site is located in a rural area. However, the applicant recognizes its responsibility to resolve complaints of interference, including blanketing and receiver-induced interference as required by Sections 73.315(b), 73.316(e) and 73.318.

---

Coverage Contours

The predicted coverage contours for the proposed operation were calculated in accordance with the provisions of Section 73.313. In accordance with current FCC practice, the distances to the contours were calculated without consideration given to terrain roughness correction factors.

The average terrain elevations from 3 to 16 kilometers along eight radials evenly spaced at 45-degree intervals were obtained from a N.G.D.C. 30-second terrain database. The terrain elevations were then used in combination with the effective radiated power for determining the distances to coverage contours.

As can be calculated using the map, the FCC predicted 70 dBu coverage contour encompasses all of Beatty, Nevada.

Allocation Study

Sheet 1 of Figure 4 is an allocation study for channel 261C at the proposed site. The figure contains a tabulation of actual and required separation distances from other pertinent stations and allotments. The proposed site meets the FCC's minimum separation requirements, specified in Section 73.207(b) of the Commission's Rules, to all assignments and stations except to KHWZ(FM) on Channel 261B1 at Ludlow, California. Section 73.215 processing is requested towards KHWZ(FM) at Ludlow as shown by the map provided in Sheet 2 of Figure 4.

---

Radiofrequency Electromagnetic Field Exposure Analysis

The permittee of this herein facility will undertake a radiofrequency electromagnetic field exposure survey after construction to ensure no exposure in excess of the Commission's standards is occurring.

Access to the transmitting site will be restricted and appropriately marked with warning signs. When it becomes necessary for workers to ascend the tower, appropriate measures, such as reduction or shut down of power if necessary, shall be taken to ensure that the human exposure to radiofrequency radiation will not exceed the FCC guidelines.

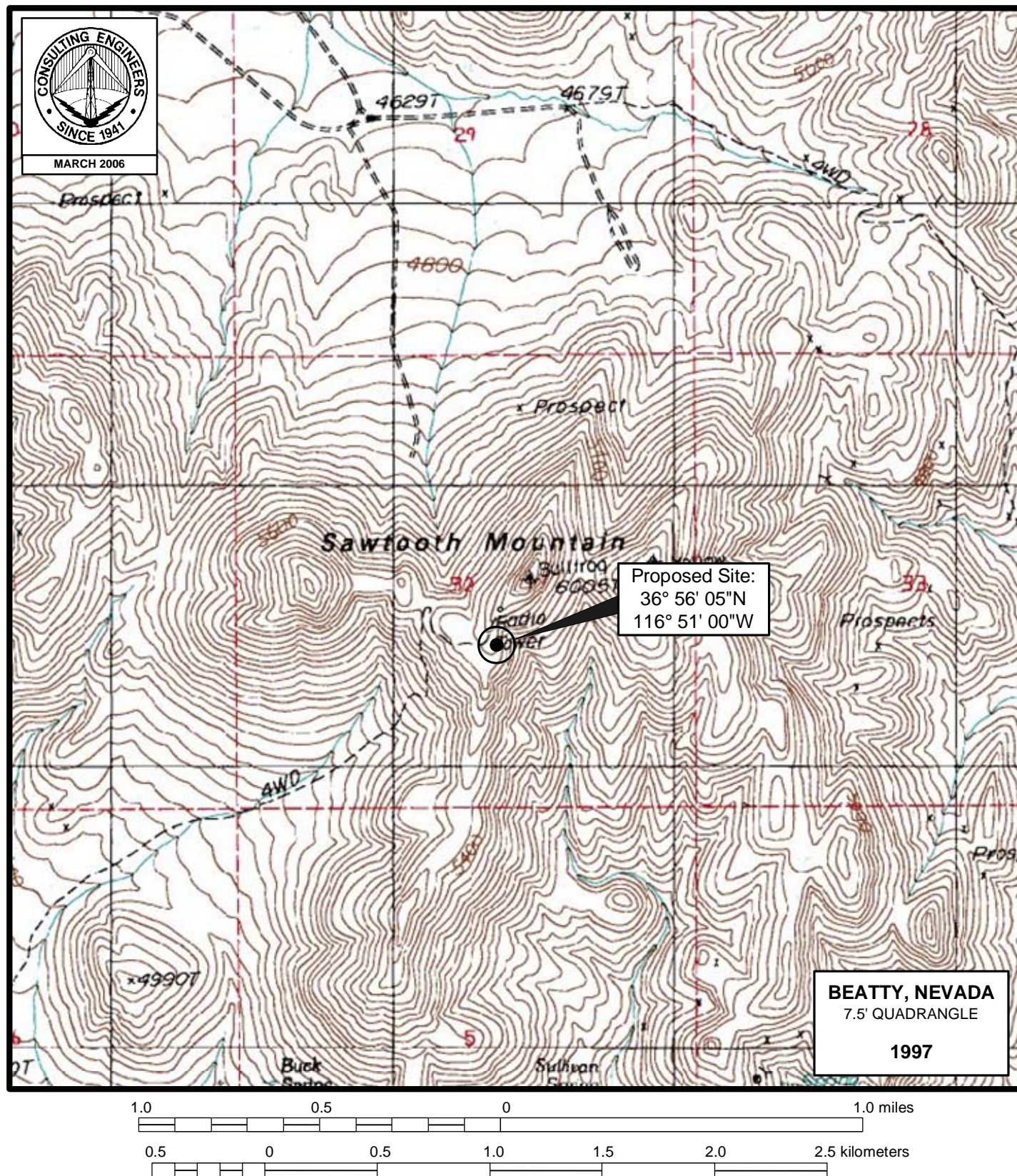
Charles A. Cooper

du Treil, Lundin & Rackley, Inc.  
201 Fletcher Avenue  
Sarasota, Florida 34237  
941.329.6000

March 9, 2006



### Figure 1



## PROPOSED TRANSMITTER SITE

NEW FM RADIO STATION  
BEATTY, NEVADA  
CH 261C 100 KW (MAX-DA) 514 M

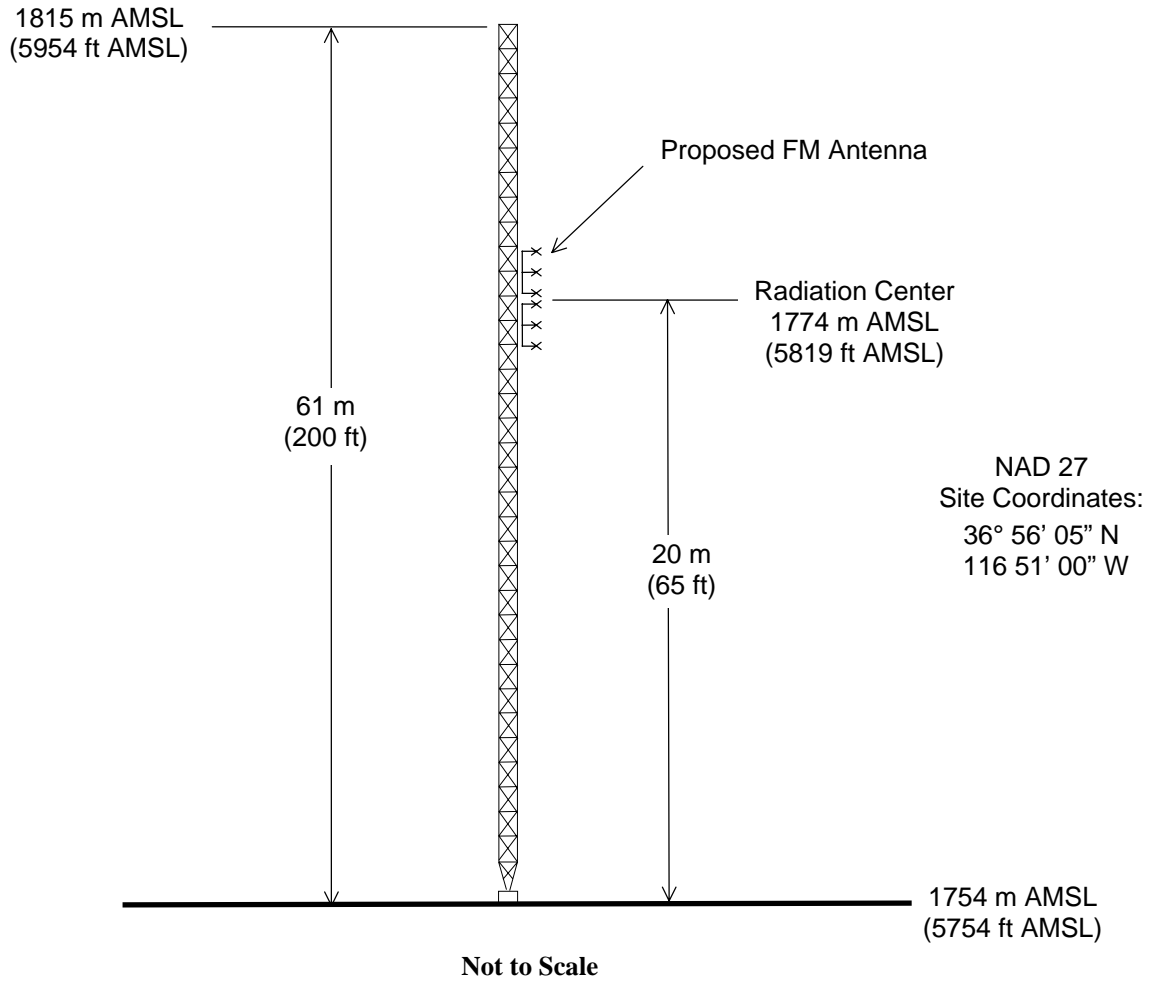
---

du Treil, Lundin & Rackley, Inc. Sarasota, Florida

Figure 2



ASRN: N/A



## ANTENNA AND SUPPORTING STRUCTURE

NEW FM RADIO STATION

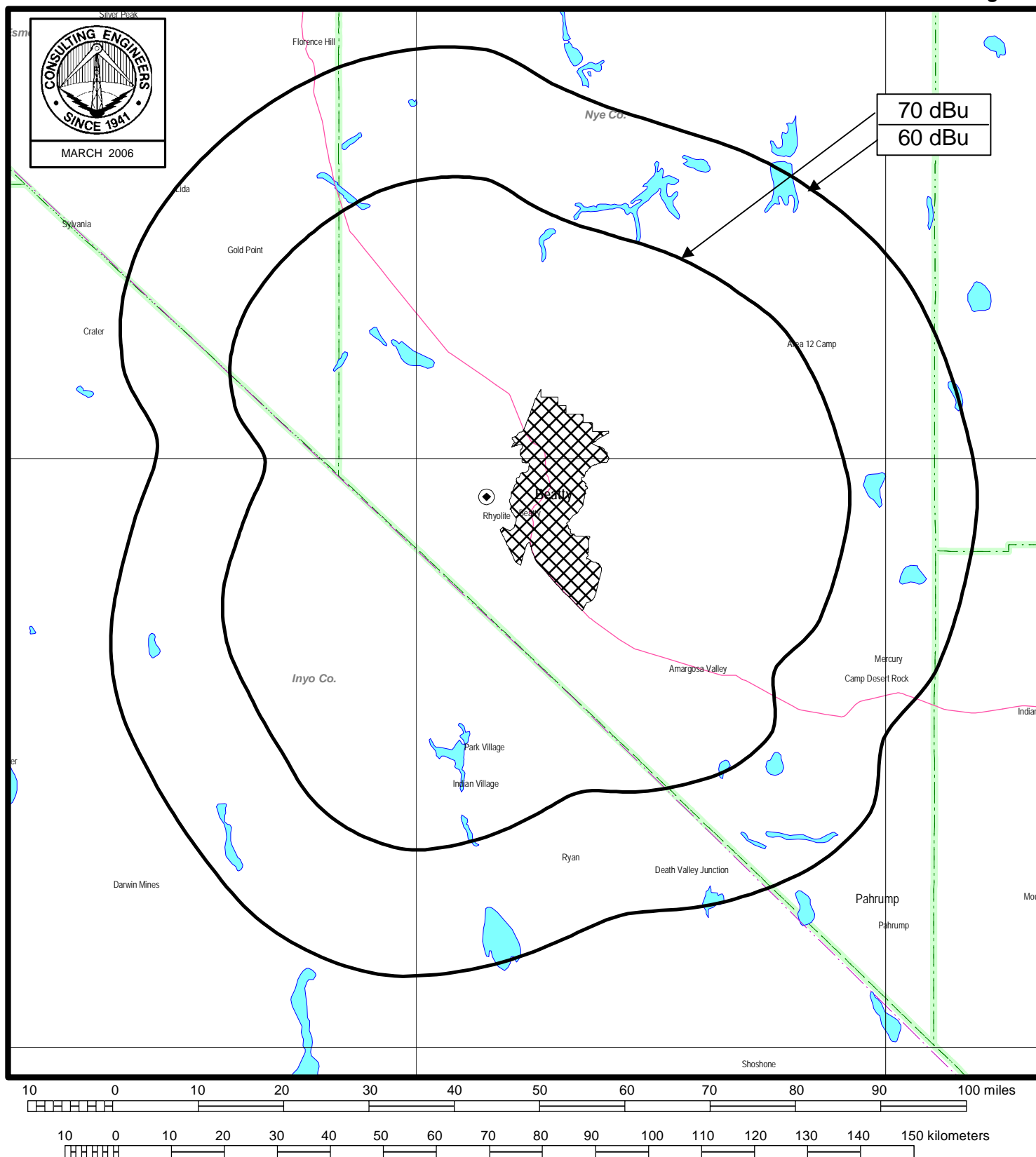
BEATTY, NEVADA

CH 261C 100 KW (MAX-DA) 514 M

du Treil, Lundin & Rackley, Inc. Sarasota, Florida



Figure 3



## FCC PREDICTED COVERAGE CONTOURS

NEW FM RADIO STATION  
BEATTY, NEVADA  
CH 261C 100 KW (MAX-DA) 514 M

du Treil, Lundin & Rackley, Inc., Sarasota, Florida

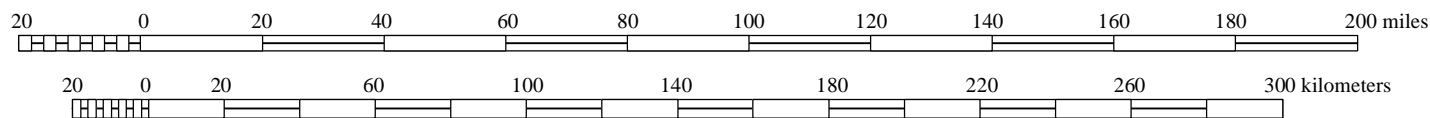
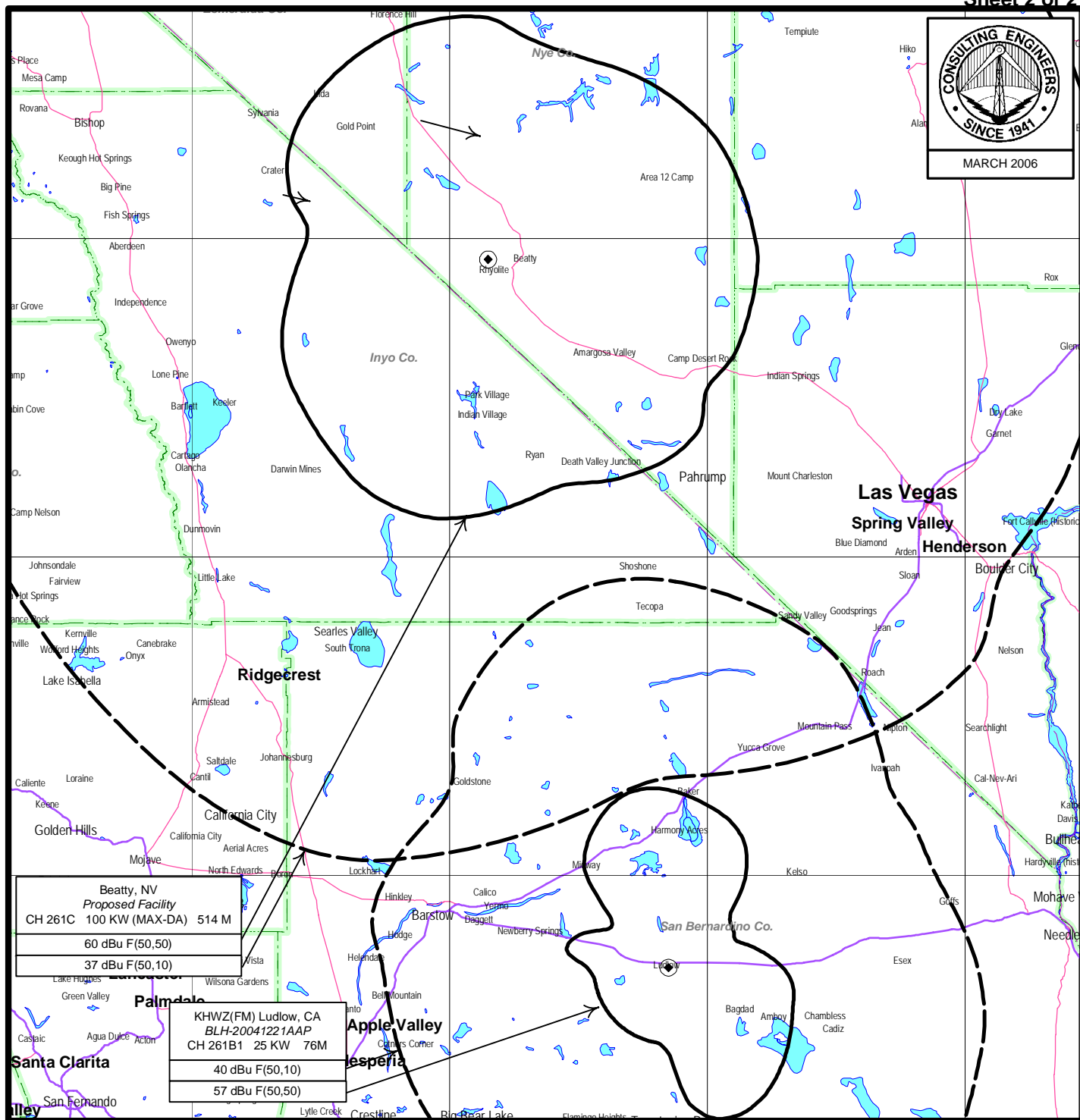


TECHNICAL EXHIBIT  
APPLICATION FOR FM CONSTRUCTION PERMIT  
BEATTY, NEVADA  
CH 261C 100 KW (MAX-DA) 514 M

Channel 261C Allocation Study

36° 56' 05" North Latitude  
116° 51' 00" West Longitude

Call Id	City St	Status	File Num	Channel Freq	ERP HAAT	DA Id	Latitude Longitude	73 215	Bear	Dist. (km)	Req. (km)
95177	BEATTY NV	VAC C	261 C 100.1	0.000	N	36-59-39 116-48-52	N	25.5	7.32	290.0	
<i>(Beatty Allotment Reference Point.)</i>											
KKZQ 85024	TEHACHAPI CA	BLH LIC C	20001220AAT	261 A 100.1	0.340 189	35-04-30 118-22-07	Y	213.9	247.64 21.64	226.0 Clear	
KHWZ 34557	LUDLOW CA	BLH LIC C	20041221AAP	261 B1 100.1	25.000 76	34-42-34 116-09-02	Y	165.5	254.86 -4.14	259.0 Short	
<i>(Section 73.215 processing requested towards KHWZ(FM) at Ludlow, California.)</i>											
KIBS 24945	BISHOP CA	BLH LIC C	7571	264 B 100.7	1.000 902	37-25-00 118-11-00	N	294.8	129.93 24.93	105.0 Clear	



## SECTION 73.215 ALLOCATION STUDY

NEW FM RADIO STATION  
BEATTY, NEVADA  
CH 261C 100 KW (MAX-DA) 514 M

du Treil, Lundin & Rackley, Inc., Sarasota, Florida