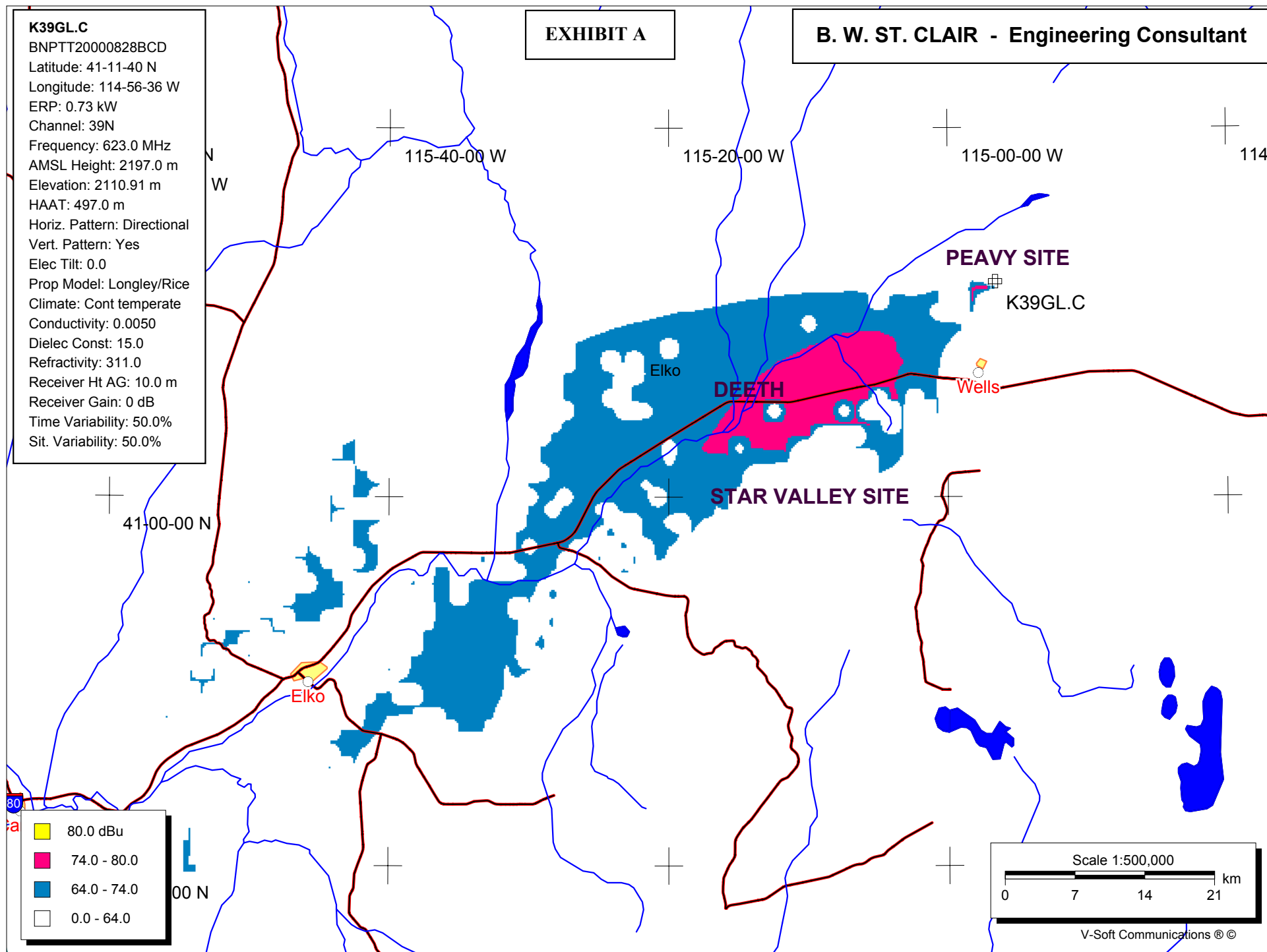


K39GL.C

BNPTT20000828BCD
Latitude: 41-11-40 N
Longitude: 114-56-36 W
ERP: 0.73 kW
Channel: 39N
Frequency: 623.0 MHz
AMSL Height: 2197.0 m
Elevation: 2110.91 m
HAAT: 497.0 m
Horiz. Pattern: Directional
Vert. Pattern: Yes
Elec Tilt: 0.0
Prop Model: Longley/Rice
Climate: Cont temperate
Conductivity: 0.0050
Dielec Const: 15.0
Refractivity: 311.0
Receiver Ht AG: 10.0 m
Receiver Gain: 0 dB
Time Variability: 50.0%
Sit. Variability: 50.0%

EXHIBIT A**B. W. ST. CLAIR - Engineering Consultant**

K39XX STAR VALLEY
BLTTV198007281J
Latitude: 41-01-20 N
Longitude: 115-11-40 W
ERP: 0.35 kW
Channel: 39N
Frequency: 623.0 MHz
AMSL Height: 1905.0 m
Elevation: 1819.46 m
HAAT: 266.0 m
Horiz. Pattern: Directional
Vert. Pattern: Yes
Elec Tilt: 0.0
Prop Model: Longley/Rice
Climate: Cont temperate
Conductivity: 0.0050
Dielec Const: 15.0
Refractivity: 311.0
Receiver Ht AG: 10.0 m
Receiver Gain: 0 dB
Time Variability: 50.0%
Sit. Variability: 50.0%

EXHIBIT B

B. W. ST. CLAIR - Engineering Consultant

