

Channel Study

REFERENCE		CH# 219D - 91.7 MHz, Pwr= 0.008 kW, HAAT=178.9M, COR= 2276 M								DISPLAY DATES	
40 02 40.0 N.		Average Protected F(50-50)= 7.3 km								DATA 07-09-07	
107 56 15.0 W.										SEARCH 07-09-07	
CH CITY	CALL	TYPE STATE	AZI. <--	DIST FILE #	LAT. LNG.	Pwr(kW) HAAT(M)	INT(km) COR(M)	PRO(km) LICENSEE	*IN* (Overlap in km)	*OUT*	
219D Meeker	K219AW	APP V CO	0.0 0.0	0.00 BFPT20070309AAO	40 02 40.0 107 56 15.0	0.010 57	13.9 2276	4.4 Educational Media Foundati	-18.05*	-17.57*	
219D Meeker	K219AW	LIC HN CO	150.2 330.2	0.14 BLFT19860912TE	40 02 36.0 107 56 12.0	0.008 241	28.5 2281	8.5 Educational Media Foundati	-31.56*	-18.60*	
06+2C Vernal	KBCJ	CPM DHY UT	289.1 108.3	108.46 BPCT20050915ADU	40 21 22.0 109 08 41.0	83.200 676		122.7 124.1R		-15.6M	
216D Meeker	K216BP	LIC DHN CO	115.0 295.0	0.37 BLFT19900814TA	40 02 35.0 107 56 01.0	0.021 334	0.3 2290	12.8 Public Broadcasting Of Col	-9.11*	-12.65*	
219C3 Sidney	KTSG	LIC HX CO	63.0 243.7	103.53 BLED20051221APA	40 27 43.0 106 50 58.0	2.500 392	109.6 2530	43.1 Educational Communications	-11.36	43.17	
06NT Meeker, Etc.	K06JJ	LI DHN CO	115.0 295.0	0.37 BLTTV5080	40 02 35.0 107 56 01.0	0.011 467		9.8 11.4R		-11.0M	
220C2 Glenwood Springs	KLXV	LIC EX CO	145.1 325.5	83.78 BLED20040810ABV	39 25 30.0 107 22 46.0	0.750 1004	78.5 3261	53.1 Educational Media Foundati	0.56	24.12	
222C Grand Junction	KJYE	LIC CN CO	212.7 32.2	128.83 BLH19891219KD	39 04 00.0 108 44 41.0	100.000 780	16.1 2213	98.8 Mbc Grand Broadcasting, In	105.59	29.85	
06NT Divide Creek, Etc.	K06GW	LI DHN CO	153.1 333.3	54.96 BLTTV19811019IG	39 36 11.0 107 38 49.0	0.011 908		9.6 11.2R		43.7M	
218D Parachute	K218BP	LIC DVN CO	182.1 2.1	66.85 BLFT19941122TC	39 26 34.0 107 57 59.0	0.008 57	5.8 2307	4.1 Educational Media Foundati	53.71	52.23	
06NT East Elk Creek	K06JS	LI DHN CO	146.0 326.2	58.34 BLTTV19800513IC	39 36 32.0 107 33 23.0	0.011 215		1.6 3.2R		55.1M	
06 T Divide Creek	K06GW	CP D N CO	146.9 327.1	63.48 BDFCDTT20060331A	39 33 56.0 107 31 57.0	0.005 251		5.4 6.8R		56.6M	
06NT Craig	K06CI	LI HN CO	31.3 211.6	62.50 BLTTV507	40 31 27.0 107 33 11.0	0.008 103		3.5 5.1R		57.4M	
06NT Hayden	K06CE	LI DHN CO	45.5 225.9	75.92 BLTTV589	40 31 16.0 107 17 51.0	0.072 258		11.0 12.6R		63.3M	
217C3 Gypsum	KLRY	LIC CX CO	107.5 288.2	98.02 BLED20051109AAM	39 46 30.0 106 50 45.0	0.110 964	0.7 3361	34.0 Educational Media Foundati	87.70	63.79	

Terrain database is NGDC 30 SEC

ERP and HAAT on direct-line with reference station.

• affixed to TV6 Margin= no direct-line contour overlap.

""affixed to 'IN' or 'Out' values = site inside protected contour.

Compliance with C.F.R. 74.1204

The proposed FM Translator is located within the protected 60 dBu contour of third adjacent channel station K216BP, channel 216D, Meeker, Colorado. The predicted F(50-50) field strength of K216BP at the proposed translator site is 98.9 dBu, (see Exhibit 12A-1). Therefore, the respective predicted interfering contour generated by the proposed FM Translator is 138.9 dBu. This interfering contour extends approximately 2.2 meters from the proposed transmit antenna, and the area of overlap does not reach the ground (the antenna will be mounted at the 12 meter level on a 12 meter tower).

To confirm the absence of population within the interference aperture, EMF has examined the attached topographic map (see Exhibit 12A-2), which indicates a lack of structures near the proposed tower, and therefore no structure which could be tall enough to enter the 2.2 meter interference aperture.

Therefore, EMF respectfully requests a waiver of C.F.R 74.1204 based on no population within the area of predicted interference.

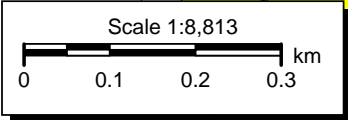
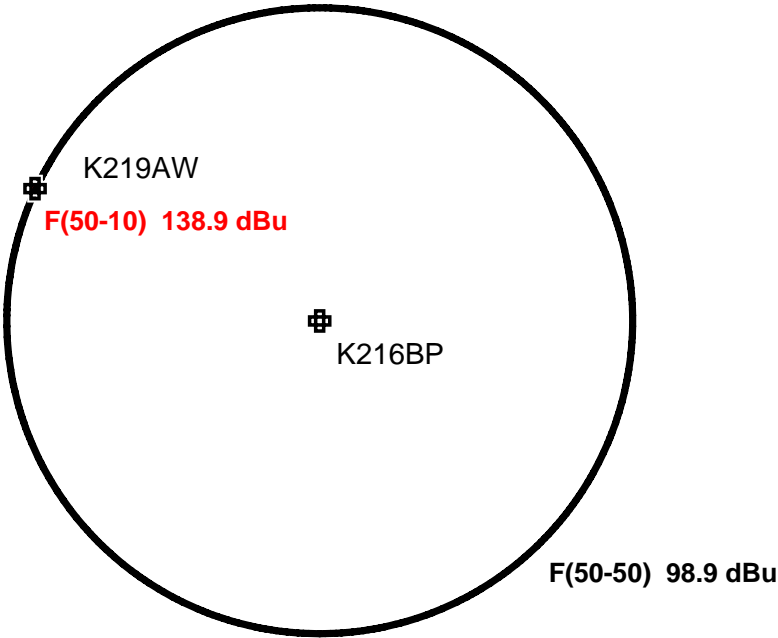
K219AW

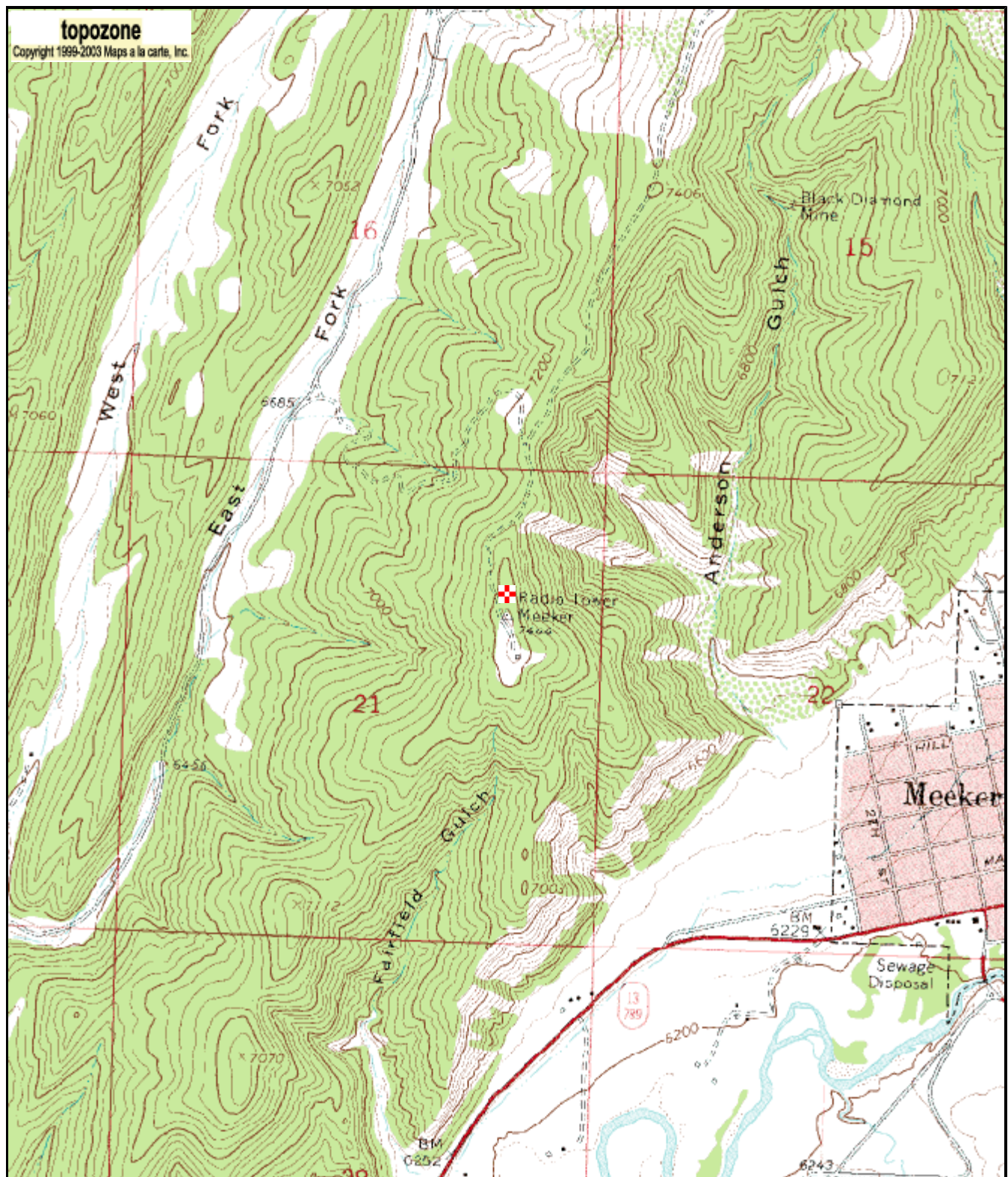
Latitude: 40-02-40 N
Longitude: 107-56-15 W
ERP: 0.008 kW
Channel: 219
Frequency: 91.7 MHz

K216BP

BLFT19900814TA
Latitude: 40-02-35 N
Longitude: 107-56-01 W
ERP: 0.021 kW
Channel: 216
Frequency: 91.1 MHz

■ K219AW
■ K216BP





0 0.3 0.6 0.9 1.2 1.5 km
0 0.2 0.4 0.6 0.8 1 mi

40° 02' 40"N, 107° 56' 15"W (NAD27)
Elevation 7,428.2 ft / 2,264.0 m (USGS NED)
USGS Meeker (CO) Quadrangle
Projection is UTM Zone 13 NAD83 Datum

M=-0.559
G=-1.892