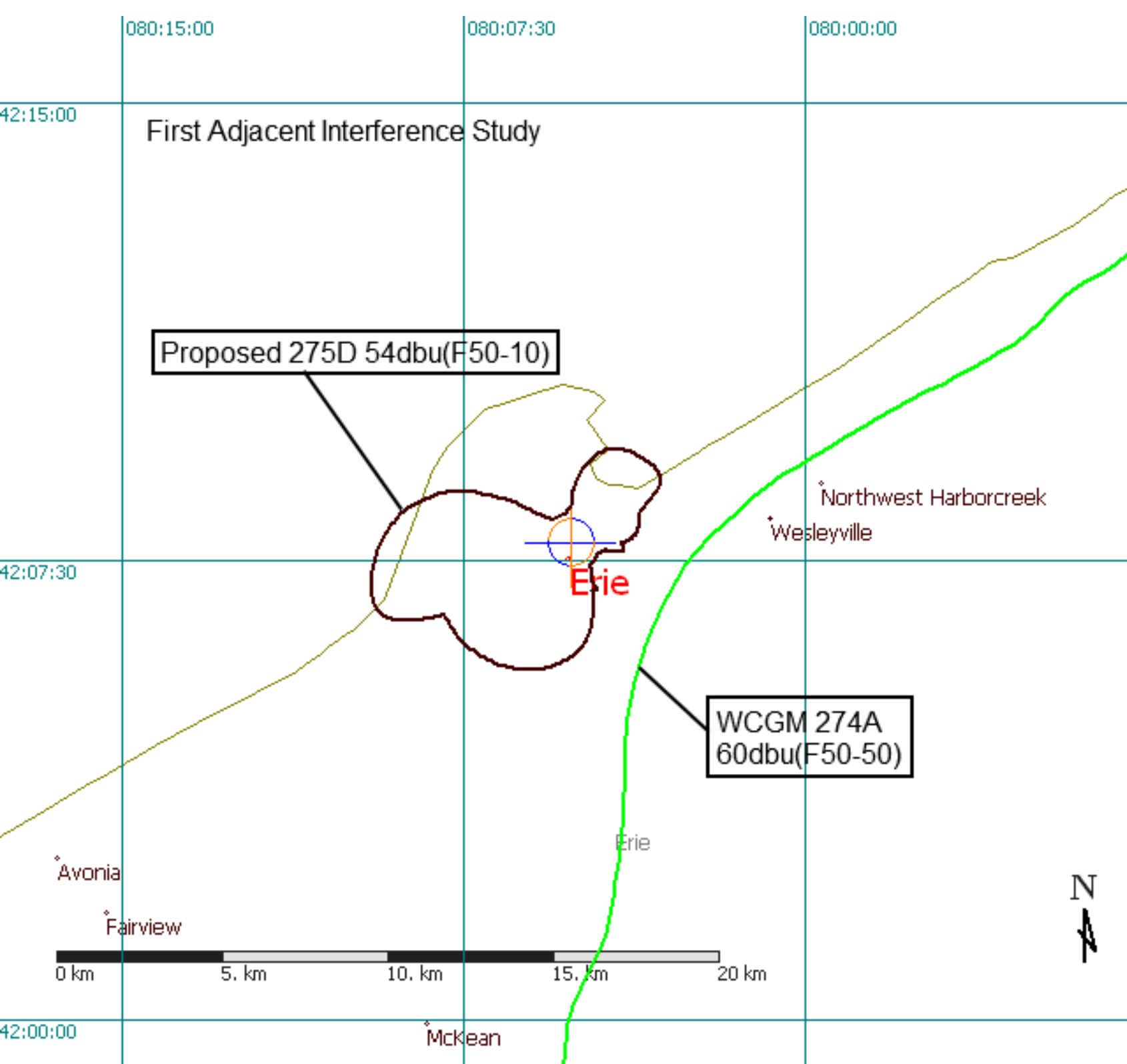


# **Channel Study**

REFERENCE		CH# 275D - 102.9 MHz, Pwr= 0.01 kW DA, HAAT= 0.0 M, COR= 233 M								DISPLAY DATES		
42 07 49.0 N.		Average Protected F(50-50)= 3.2 km								DATA 08-05-13		
80 05 08.0 W.		Standard Directional								SEARCH 08-14-13		
CH CITY	CALL	TYPE	ANT STATE	AZI. <--	DIST FILE #	LAT. LNG.	Pwr(kW) HAAT(M)	INT(km) COR(M)	PRO(km) LICENSEE	*IN* (Overlap in km)	*OUT*	
275B Hamilton	CKLH-FM«	OP	HN ON	7.5 187.6	135.16 2286	43 20 12.0 79 52 06.0	40.300 122	166.1 291	62.4 Cklh-fm	111.5R	23.7M	
272A Erie	WQHZ	LIC	DCN PA	172.2 352.2	10.09 BLH19920602KB	42 02 25.0 80 04 08.0	1.700 187	2.4 533	34.9 Radio License Holding Cbc,	5.6	-24.9*<	
274A Wattsburg	WCGM	LIC	CX PA	114.5 294.7	35.09 BLED20111011ADP	41 59 57.0 79 41 59.0	3.500 132	47.9 606	31.9 Family Life Ministries, Inc	-13.2*<	2.3	
275B Sharon	WYFM	LIC	NCX PA	201.3 20.9	127.81 BLH20030702AAA	41 03 26.0 80 38 22.0	33.000 184	135.1 508	66.7 Cumulus Licensing Llc	-10.2*<	48.1	
275D Erie	1560297	APP	DV PA	0.0 0.0	0.00 BNPFT20030313BEW	42 07 49.0 80 05 08.0	0.010	2.3 233	0.6 Family Life Ministries, In	-2.9*	-2.9*	
277D Erie	629308	APP	V PA	228.9 48.8	7.09 BNPFT20030310AZL	42 05 18.0 80 09 01.0	0.020 16	0.3 260	6.0 Calvary Chapel Of Twin Fal	3.6	0.9	
276A Russell	WQFX-FM	LIC	C PA	103.4 284.0	78.70 BMLH20010727ABC	41 57 48.0 79 09 42.0	2.500 107	40.1 598	26.5 Media One Holdings, Llc	38.1	51.2	
273A Edgewood	WZOO-FM	LIC	NCN OH	241.5 61.0	69.79 BLH19911104KD	41 49 44.0 80 49 28.0	5.800 100	2.8 329	28.6 Media One Holdings, Llc	63.9	41.0	
273B Buffalo	WTSS	LIC	CX NY	63.4 244.4	133.78 BLH20020111AAW	42 39 33.0 78 37 33.0	110.000 355	11.3 752	91.6 Entercom Buffalo License,	120.7	42.1	
276B St Thomas	CFHK-FM«	OP	DHN ON	312.8 132.1	118.08 5433	42 50 47.0 81 08 51.0	50.000 150	67.5 403	58.0 Cfhk-fm	61.5R	56.6M	

-----  
 Terrain database is NGDC 30 SEC, R= 73.215 qualifying spacings or FCC minimum spacings in KM, M= Margin in  
 KM  
 Contour distances are on direct line to and from reference station. Reference Zone= East Zone, Co to 3rd  
 adjacent.  
 All separation margins (if shown) include rounding  
 Ant Column: (D= DA Standard, Z= DA 73.215, N= Not DA 73.215, \_= Omni), Polarization (C,H,V,E),  
 Beamtilt(Y,N,X)  
 "\*"affixed to 'IN' or 'OUT' values = site inside protected contour.  
 < = Station meets FCC minimum distance spacing for its class.  
 < = Contour Overlap



080:15:00

080:07:30

080:00:00

42:15:00

Second Adjacent Interference Study  
Green - 60dbu(F50-50)  
Red - 100dbu(F50-10)

42:07:30

Northwest Harborcreek

Wesleyville

Erie

275D 630069

20030310AZL

277D 629308

Erie

Avonia

Fairview

0 km

5 km

10 km

15 km

20 km

42:00:00

McKean

N



**Compliance with C.F.R. 74.1204**

The proposed FM Translator is located within the protected 60dBu contour of third adjacent channel station WQHZ, channel 272A, Erie, PA. According to 74.1204(a)(3), in order to protect second and third adjacent facilities, the difference in dBu between the two facilities must not exceed 40dBu.

The proposed ERP for New 630069.P:	10 watts
The proposed COR for New 630069.P:	35 meters
WQHZ F(50/50) contour at proposed site:	82.0dBu
The F(50/10) contour of proposed New 630069.P:	122.0dBu

The predicted distance to the 122.0dbu interfering contour is 17.6 meters. Taking into account the vertical elevation pattern of the Scala CA2-V single bay antenna and the height above ground of 35M, it has been determined that the interfering contour of 122.0dbu does not reach the ground. As seen in Exhibit 13-A1, the lowest elevation for this interfering contour is 27.355M above ground which is a distance of 7.645M lower than the antenna at a depression angle of 40 degrees. This 7.645M distance contain the elevator penthouse and top mechanical floor directly below the proposed antenna and are not regularly occupied.

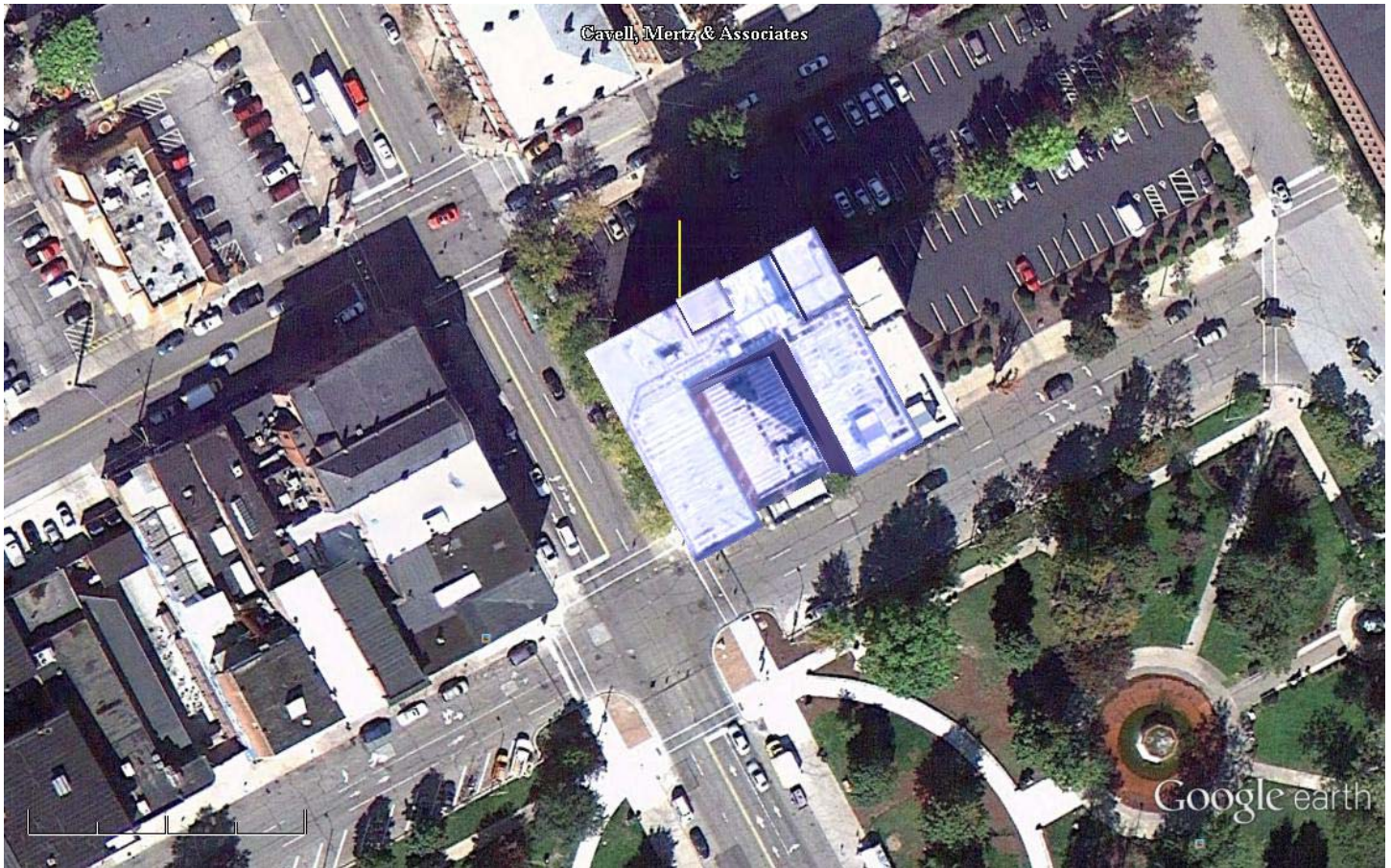
As can be seen in Exhibit 13–A2, showing the proposed building and rooftop, there are no surrounding structures which are tall enough to enter the 27.355 meter aperture.

Therefore, FLM respectfully requests a waiver of C.F.R. 74.1204 based on no population within the area of predicted interference.

EXHIBIT 13 - A1  
74.1204(d) Showing  
New FID 139247  
Erie, PA

ERP (kw): 0.01  
Height of Antenna above Ground (m): 35  
Translator's IX Contour: 122  
Antenna Type: Scala CA2V-1

<b>Depression Angle from Horizon</b>	<b>Antenna Relative Field</b>	<b>ERP (kw) from the Antenna RF</b>	<b>Dist. To IX Contour (m)</b>	<b>Height IX Contour Above Ground (m)</b>
0	1.000	0.0100	17.6198	35.000
5	0.990	0.0098	17.4436	33.480
10	0.978	0.0096	17.2251	32.009
15	0.958	0.0092	16.8709	30.633
20	0.915	0.0084	16.1221	29.486
25	0.865	0.0075	15.2411	28.559
30	0.808	0.0065	14.2280	27.886
35	0.745	0.0056	13.1267	27.471
40	0.675	0.0046	11.8933	27.355
45	0.595	0.0035	10.4838	27.587
50	0.510	0.0026	8.9861	28.116
55	0.430	0.0018	7.5765	28.794
60	0.345	0.0012	6.0788	29.736
65	0.265	0.0007	4.6692	30.768
70	0.190	0.0004	3.3478	31.854
75	0.125	0.0002	2.2025	32.873
80	0.075	0.0001	1.3215	33.699
85	0.055	0.0000	0.9691	34.035
90	0.050	0.0000	0.8810	34.119



Google earth

feet | 500  
meters | 100



NAD27

42 07' 49" N

80 05' 08" W

Yellow Marker: 17.6M at zero degrees true north