

**ENGINEERING EXHIBIT
APPLICATION FOR CONSTRUCTION PERMIT
MERIDIAN BROADCASTING INC.
FM STATION WTLT
SANIBEL, FLORIDA
FACILITY ID 66223
CH 229C2 41 KW 144 M**

June 20, 2006

**ENGINEERING EXHIBIT
APPLICATION FOR CONSTRUCTION PERMIT
MERIDIAN BROADCASTING INC.
RADIO STATION WTLT
SANIBEL, FLORIDA
FACILITY ID 66223
CH 229C2 41 KW 144 M**

Table of Contents

Engineering Statement

Figure 1	Transmitter Location
Figure 2	Tower and Antenna Sketch
Figure 3	Predicted Coverage Map
Figure 4	Separation Study
Figure 5	Allocation Map

**ENGINEERING EXHIBIT
APPLICATION FOR CONSTRUCTION PERMIT
MERIDIAN BROADCASTING INC.
FM STATION WTLT
SANIBEL, FLORIDA
FACILITY ID 66223
CH 229C2 41 KW 144 M**

Engineering Statement

This Engineering Exhibit was prepared on behalf of Meridian Broadcasting Inc., licensee of broadcast station WTLT Naples, Florida, Facility ID 66223. Station WTLT was ordered to file a minor change application for a construction permit specifying a facility to serve Sanibel, Florida. See Docket No. 05-134, RM-11207. Meridian proposes to move WTLT to a new transmitter location and to employ effective radiated power of 41 kilowatts with antenna height above average terrain of 144 meters, with continued operation on Channel 229C2 (93.7 MHz).

Processing of the application employing the provisions of 47 CFR 73.215 is requested. The Federal Aviation Administration has been notified of the proposed tower construction, FAA File No. 2003-ASO-5644-OE. The application complies with the rules of the Federal Communications Commission.

Proposed Transmitter Location

The proposed tower will be located at a site approximately 0.5 kilometer ENE of the intersection of U.S. Highway 41 and Florida Road 45, as shown on Figure 1. The geographic coordinates for the location are (NAD 27):

26° 30' 14" North Latitude

81° 51' 09" West Longitude.

Figure 2 is a sketch of the proposed antenna and tower showing pertinent heights. A six bay FM antenna will be mounted near the top of the tower.

Predicted Coverage Contours

The predicted 70 dBu and 60 dBu coverage contours for WTLT are shown on Figure 3. The proposed 70 dBu contour covers 87.1 percent of the land area of Sanibel and 91.9 percent of the population, thereby complying with FCC rules regarding coverage of the principal community.

Separation Study

Figure 4 is a distance separation study showing all stations pertinent to the WTLT channel 229C2 allocation. The WTLT proposal is short spaced with station WBGF Belle Glade, FL (Channel 228C3) by 3.2 kilometers, with station WGYL Vero Beach, FL (Channel 229C2) and with station WLVE Miami Beach, FL (Channel 230C0). Contour overlap protection according to 47 CFR 73.215 will be employed by WTLT to protect these stations. Station WBGF employs the provisions of 47 CFR 73.215 therefore the facilities proposed in BMPH-20050922ABK have been used. For stations WGYL and WLVE facilities assumed are maximum for each class of station.

Allocation Study Map

Figure 5 is a map showing the protected and interfering contours for the proposed operation of WTLT. As will be noted, there is no contour overlap prohibited by 47 CFR 73.215 with stations WBGF, WGYL and WLVE.

Radiofrequency Radiation Exposure¹

The proposed WTLT facilities were evaluated in terms of potential radiofrequency radiation exposure to humans at two meters above ground level near the base of the tower in accordance with OST Bulletin No. 65, "*Evaluating Compliance With FCC-Specified Guidelines for Human Exposure to Radiofrequency Radiation*", August 1997.

The WTLT antenna center of radiation will be 143 meters above ground level. The calculated power density two meters above ground level at the base of the tower was determined to be 0.0169 milliwatts per centimeter squared or 8.4 percent of the FCC guideline value for an uncontrolled environment. A conservative relative field factor of 0.35 was assumed for the calculation.

Access to the tower will be restricted and appropriately marked with warning signs. If it becomes necessary for workers to ascend the tower, the power of the station will be reduced, or the station will be taken off the air, so as to prevent exposure in excess of the guideline value.

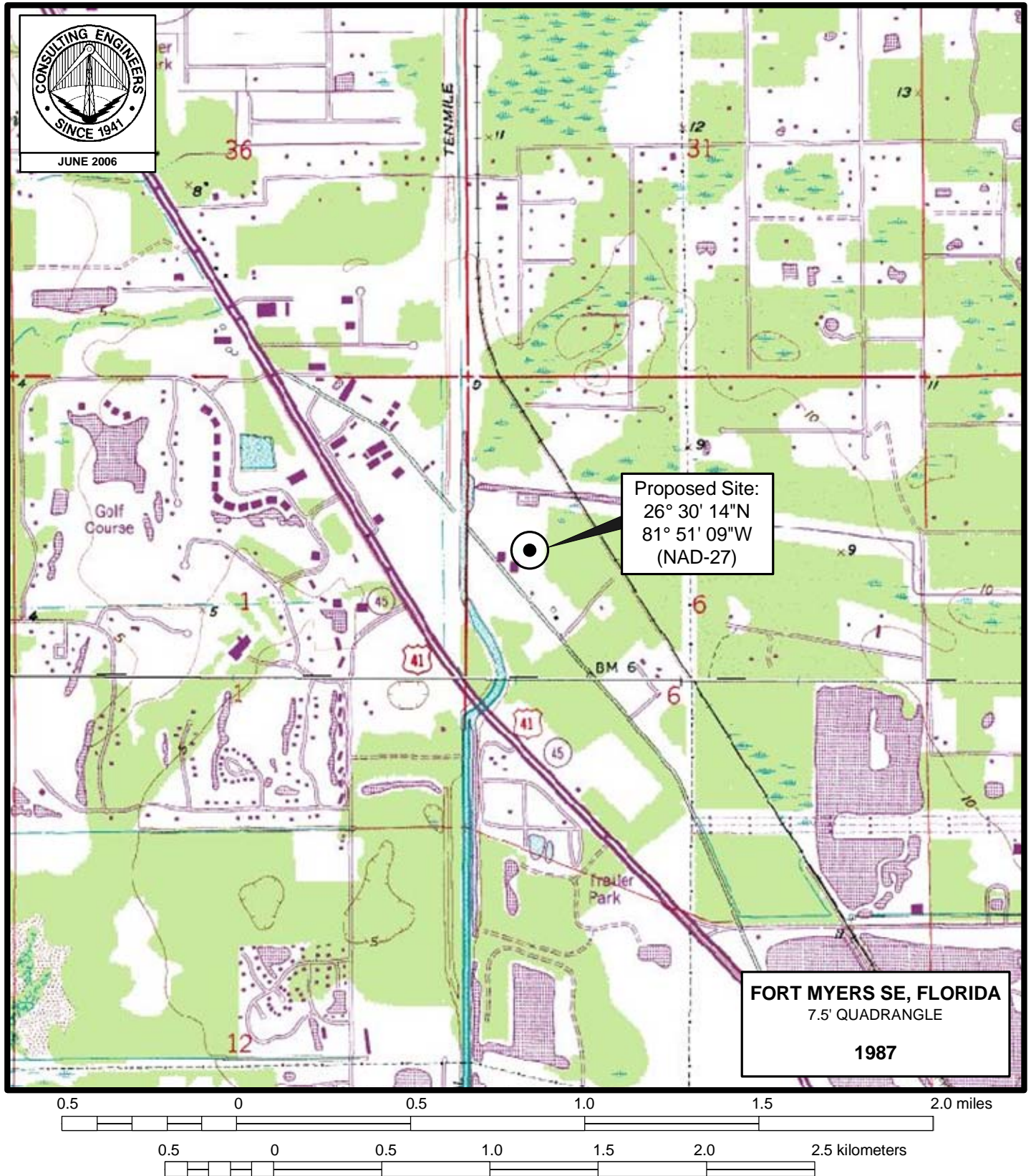


Louis R. du Treil, Sr.
du Treil, Lundin & Rackley, Inc.
201 Fletcher Avenue
Sarasota, Florida 34237-6019
941 329 6000

June 20, 2006

¹ This statement addresses only human exposure to radiofrequency radiation and not the other non-radiofrequency radiation matters listed in the National Environmental Policy Act of 1969.

Figure 1

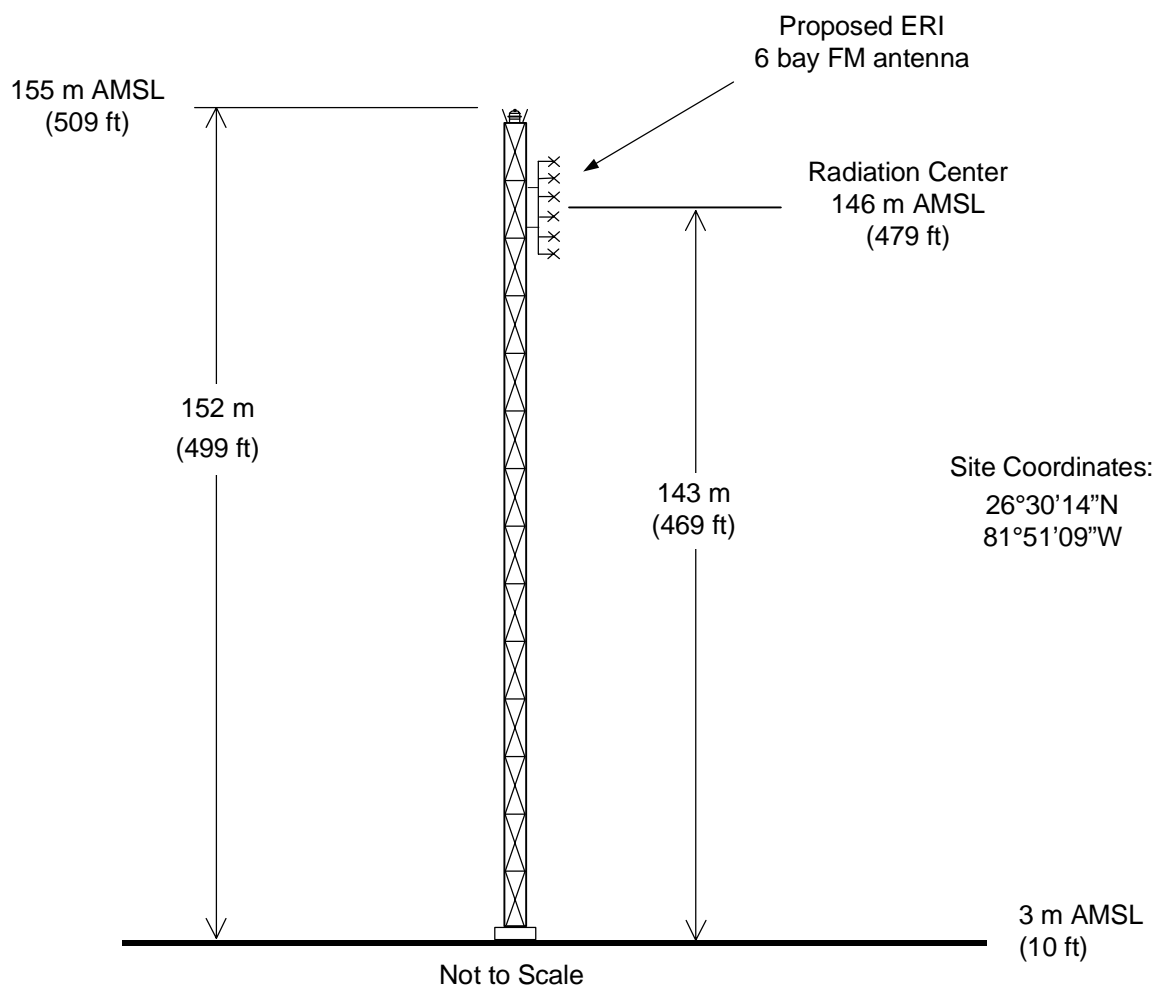
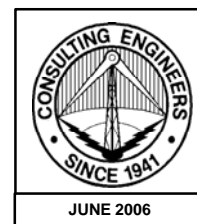


PROPOSED TRANSMITTER SITE

FM STATION WTLT
SANIBEL, FLORIDA
CH 229C2 41 KW 144 M

du Treil, Lundin & Rackley, Inc. Sarasota, Florida

Figure 2

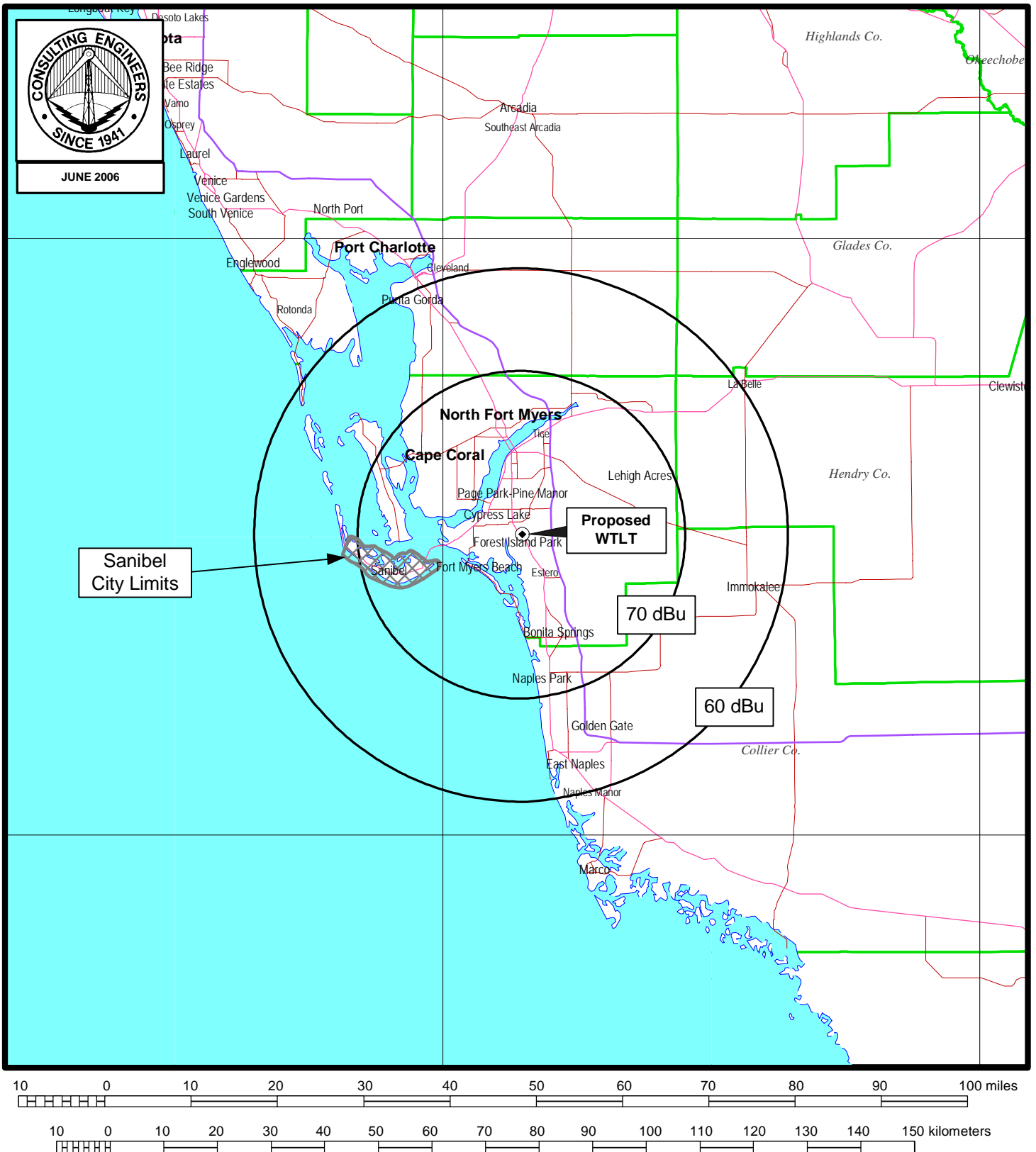


PROPOSED ANTENNA AND SUPPORTING STRUCTURE

FM STATION WTLT
SANIBEL, FLORIDA
CH 229C2 41 KW 144 M

du Treil, Lundin & Rackley, Inc. Sarasota, Florida

Figure 3



PREDICTED COVERAGE CONTOURS

FM STATION WTLT
SANIBEL, FLORIDA
CH 229C2 41 KW 144 M

du Treil, Lundin & Rackley, Inc. Sarasota, Florida

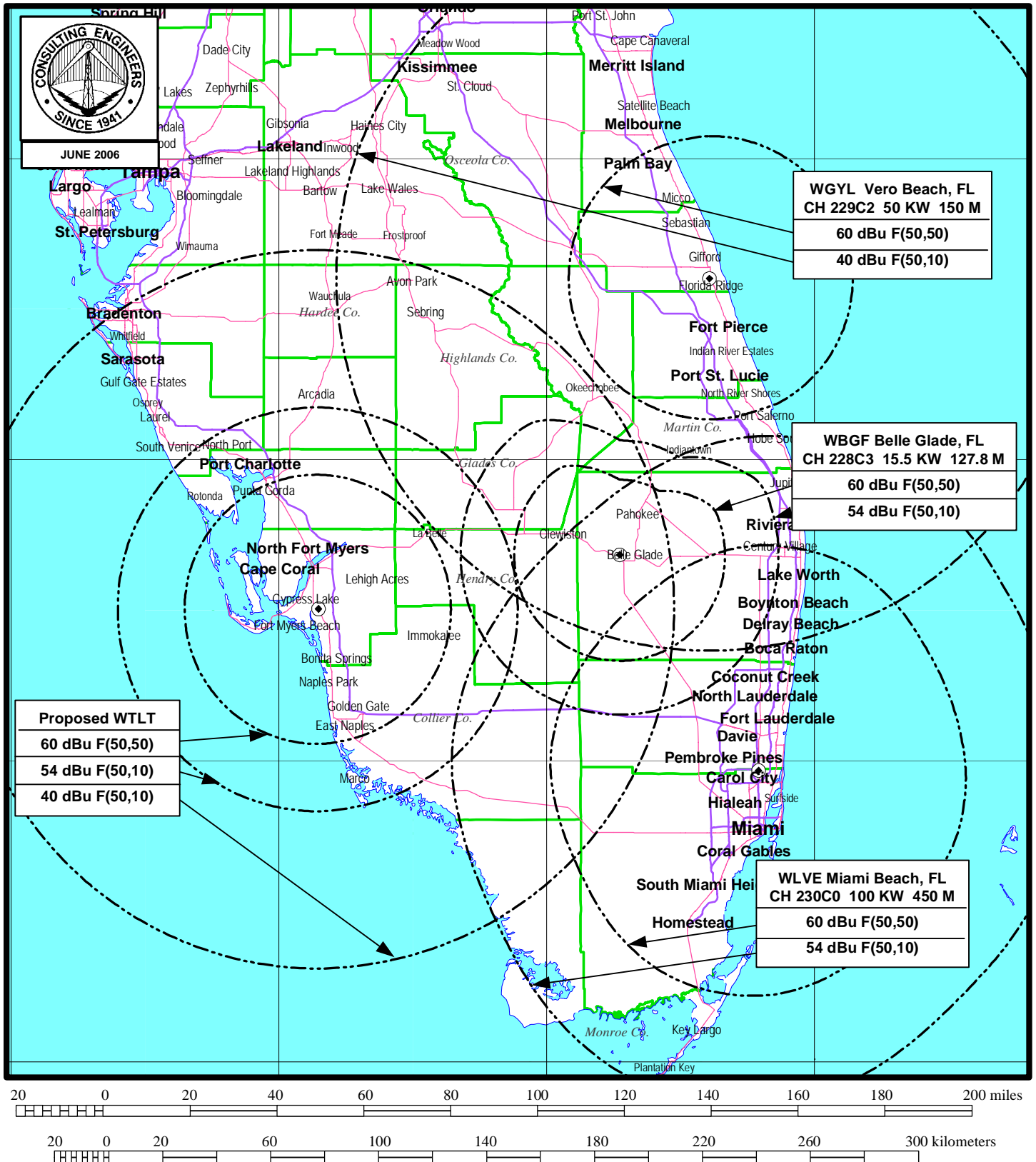
Figure 4

**FM STATION WTLT
SANIBEL, FLORIDA
CH 229C2 41 KW 144 M
26-30-14 N 81-51-09 W**

FM Separation Study

Call Id	City St Status	File Num	Channel Freq	ERP HAAT	DA Id	Latitude Longitude	73 215	Bear	Dist. (km)	Req. (km)
WFLZ-FM 29732	TAMPA FL LIC C	BLH 19880627KA	227 C 93.3	100.000 414	N	27-50-32 082-15-46	N	344.8	153.76 48.76	105.0 Clear
WBGF 59661	BELLE GLADE FL CP C	BMPH 20050922ABK	228 C3 93.5	15.500 127.8	Y 72877	26-41-00 080-43-39	Y	79.6	113.81 -3.19	117.0 Short
WBGF 59661	BELLE GLADE FL LIC C	BLH 19980715KD	228 A 93.5	5.000 82	N	26-42-43 080-40-59	Y	78.5	118.73 12.73	106.0 Close
WTLT 66223	NAPLES FL LIC C	BLH 20030407AAL	229 C3 93.7	21.000 100	N	26-19-00 081-47-13	Y	162.6	21.75 -155.25	177.0 Short
0	NAPLES FL DEL C	RM 11207	229 C3 93.7	0.000		26-19-00 081-47-13		162.6	21.75 -155.25	177.0 Short
0	SANIBEL FL ADD C	RM 11207	229 C2 93.7	0.000		26-30-00 082-05-00		269.0	23.02 -166.98	190.0 Short
WGYL 58946	VERO BEACH FL LIC C	BLH 19911021KD	229 C2 93.7	50.000 146	N	27-36-04 080-23-33	N	49.5	189.10 -0.90	190.0 Short
WLVE 51978	MIAMI BEACH FL LIC C	BLH 20050225AAH	230 C0 93.9	100.000 307	Y 64686	25-58-02 080-12-34	N	109.6	174.61 -1.39	176.0 Short
WSJT 51987	LAKELAND FL LIC C	BLH 19950713KB	231 C 94.1	100.000 455	N	27-40-23 082-06-35	N	349.0	132.03 27.03	105.0 Clear

Figure 5



ALLOCATION MAP

FM STATION WTLT
SANIBEL, FLORIDA
CH 229C2 41 KW 144 M

du Treil, Lundin & Rackley, Inc. Sarasota, Florida