

TECHNICAL EXHIBIT
REGARDING COVERAGE OF PROPOSED
COMMONLY OWNED TELEVISION STATIONS
WTCV(TV) CH. 18 SAN JUAN, PUERTO RICO
WVEO(TV) CH. 44 AGUADILLA, PUERTO RICO
WVOZ-TV CH. 48 PONCE, PUERTO RICO

Introduction

This technical exhibit was prepared on behalf of CaribeVision Station Group, LLC in support of an application for assignment of television stations WTCV(TV), WVEO(TV) and WVOZ-TV. WTCV(TV) is currently authorized as a parent to the two satellite stations WVEO(TV) and WVOZ-TV. Two figures are included as part of this technical exhibit: Figure 1 shows the City Grade (80 dBu) and Grade B (64 dBu) contours for the three stations; Figure 2 shows the extent of the City Grade coverage and overlap for stations WVEO(TV) and WVOZ-TV predicted using the Longley-Rice propagation model.

City Grade and Grade B Contour Overlaps

Figure 1 shows the City Grade and Grade B contours of the licensed facility of station WTCV(TV) (BLCT-19840808KN), with the City Grade and Grade B contours for its satellite stations WVEO(TV) (BLCT-19950606KE) and WVOZ-TV (BLCT-19860808KK). As shown in Figure 1, there is Grade B contour overlap between WTCV(TV) and WVOZ-TV and between WTCV(TV) and WVEO(TV). As shown in Figure 1, there is no overlap between the City Grade contours of WTCV(TV) and WVOZ-TV, or between the City Grade contours of WTCV(TV) and WVEO(TV). As also shown in Figure 1, contour overlap is predicted between the City Grade and Grade B contours of stations WVEO(TV) and WVOZ-TV.

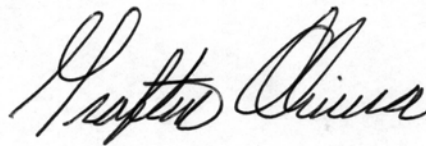
The contours depicted in Figure 1 were determined every degree for 360 radials, in accordance with the provisions of Section 73.684. The average elevations from the transmitter sites were obtained from the USGS 1-second terrain database and used to determine the distances to coverage contours. The maps show the outlines of the municipalities of Puerto Rico, the equivalent of counties in the United States. While there are no Designated Market Areas for Puerto Rico, there is separation between the San Juan, Ponce and Aguadilla/Mayaguez areas.

Longley-Rice City Grade Overlap – WVOZ-TV and WVEO(TV)

The island of Puerto Rico is well known for its rugged terrain and mountain chains that separates cities along various costal zones. To make a more accurate assessment of predicted signals, the Longley-Rice propagation model was used, following guidelines contained in FCC's OET-69 bulletin, to predict the extent of the City Grade overlap between stations WVOZ-TV and WVEO(TV). No consideration was given to interference and no clutter factor was used. The results of the Longley-Rice calculations are depicted in Figure 2. As shown in Figure 2, there is some City Grade signal overlap, shown in pink, between WVOZ-TV and WVEO(TV).

Conclusion

There is some overlap of the Grade B contours of parent station WTCV(TV) and satellite stations WVOZ-TV and WVEO(TV). There is no overlap of the City Grade contours of WTCV(TV) and satellite stations WVOZ-TV and WVEO(TV). While there is some FCC predicted overlap of the City Grade contours of WVOZ-TV and WVEO(TV), the Longley-Rice studies included herein show very little actual overlap predicted between WVOZ-TV and WVEO(TV), limited to isolated small areas with very little population. Thus, it is reasonable to conclude that no significant City Grade coverage overlap is to be expected between WVOZ-TV and WVEO(TV).



Grafton Olivera, P.E.
du Treil, Lundin & Rackley, Inc.
201 Fletcher Avenue
Sarasota, Florida 34237-6019

(941) 329-6000

January 20, 2007

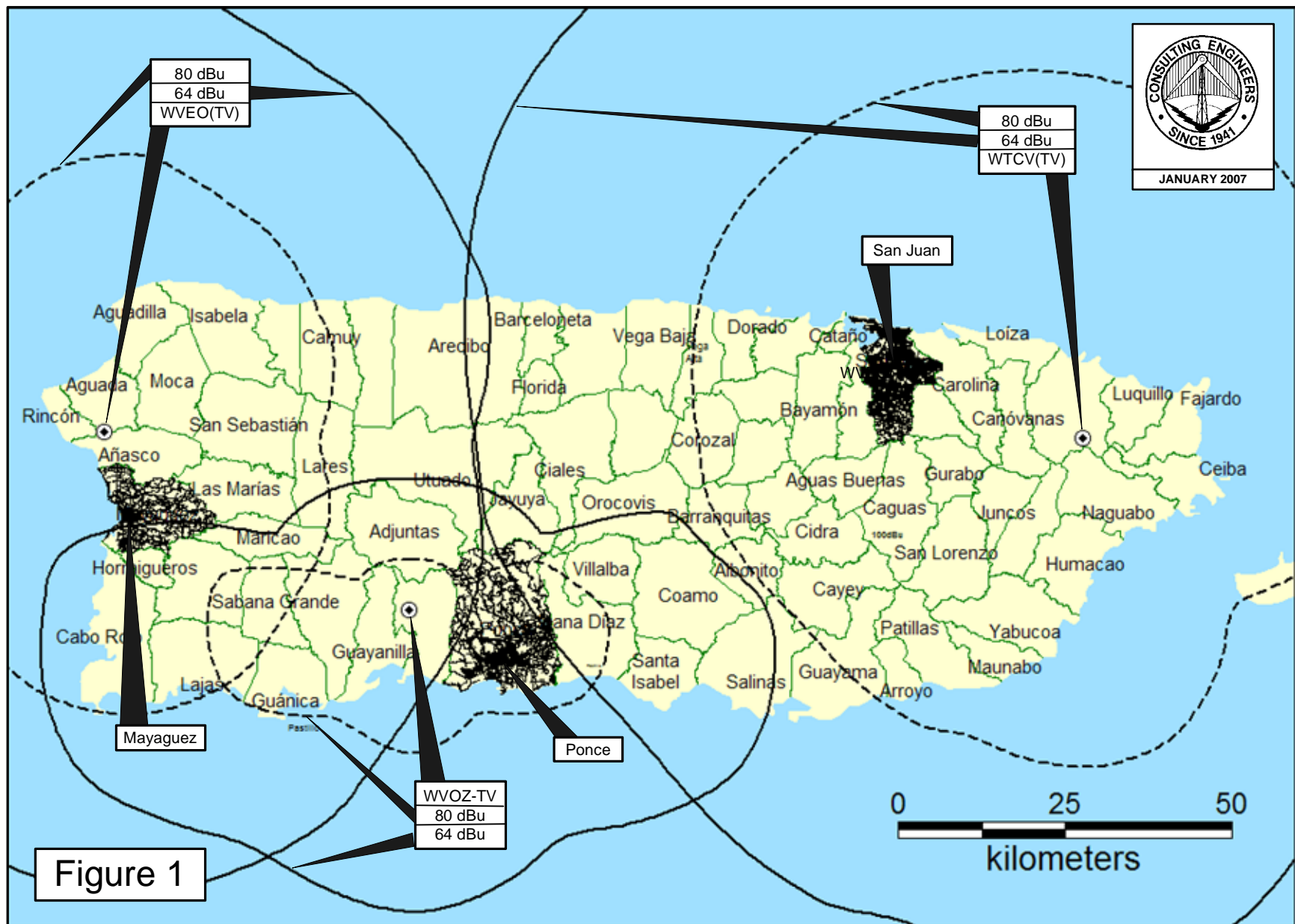


Figure 1

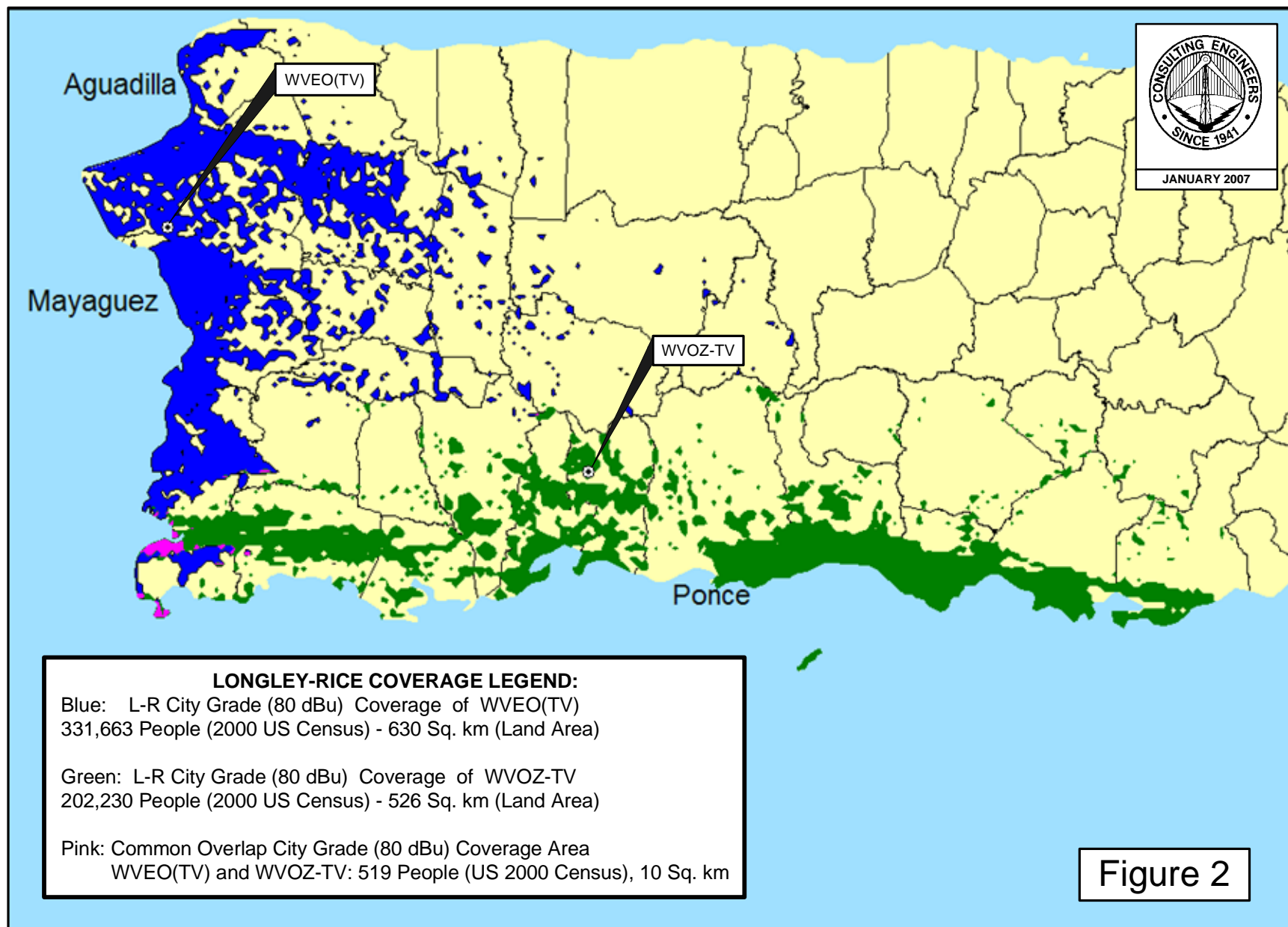
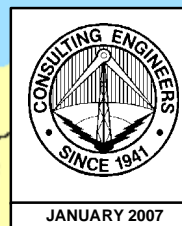
CITY GRADE (80 dBu) AND GRADE B (64 dBu) CONTOURS

WTCV-TV - San Juan, PR

WVOZ-TV - Ponce, PR

WVEO-TV - Aguadilla, PR

du Treil, Lundin & Rackley, Inc. Sarasota, Florida



LONGLEY-RICE CITY GRADE COVERAGE AND OVERLAP

STATIONS WVOZ-TV & WVEO(TV)

du Treil, Lundin & Rackley, Inc. Sarasota, Florida