

Corrected Operation 60 dBμ F(50:50)

**Bellevue, FL - WYFZ (FM)
Service Contour Study:
Correction of Coordinates**

WYFZ.P
Bellevue, FL
Corrected Operation
Facility ID: 76441
Latitude: 29-10-37 N
Longitude: 082-08-41 W
ERP: 0.90 kW
Channel: 217A (91.3 MHz)
AMSL Height: 125.0 m
Horiz. Pattern: Directional

60 dBμ F(50:50) Contour
Total Population: 162,738
Total Area: 548.0 sq. km

Ocala
WYFZ.P

Bellevue

NED 03 SEC Terrain Database
US Census 2010 PL Database

Terrain
5 62 m

Scale 1:175,000

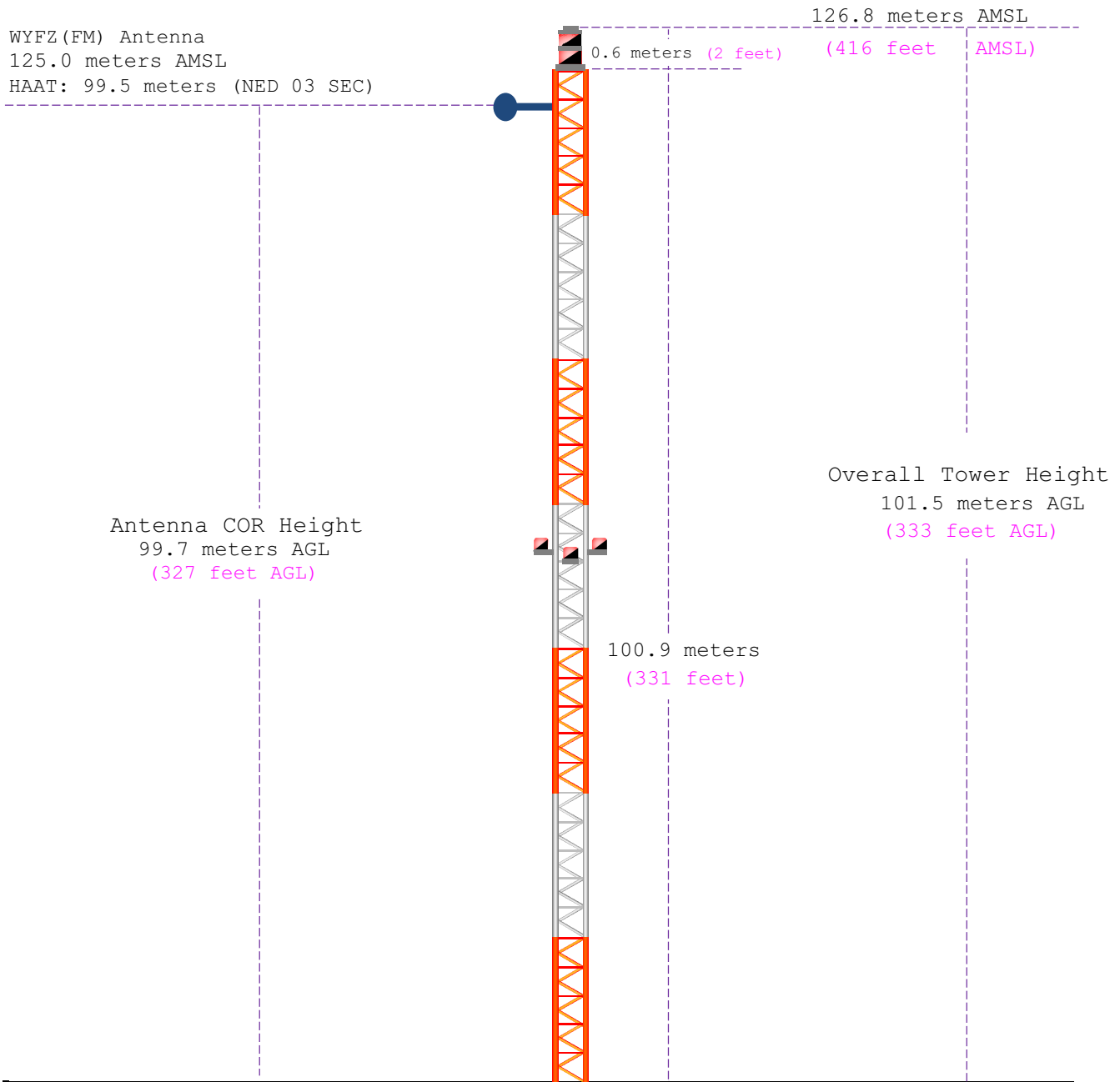
0 3 6 9 km

Asher Broadcast Consulting LLC
justinasher@consultant.com
1 (202) 875-2986

V-Soft Communications LLC ©

Bellevue, FL - WYFZ(FM)

Vertical Plan of Antenna System



Ground Elevation: 25.3 meters AMSL (83 feet AMSL)		
Address: 0.3 miles southwest of Highway 27 and County Road 200		
City: Ocala	Latitude (D M S) Longitude (D M S)	
County: Marion	NAD 27 datum values: 29 10 36.78436 82 08 41.36775	
State: Florida	NAD 83 datum values: 29 10 37.70000 82 08 40.70000	
Antenna Structure Registration 1210677 (Pending Correction)	Drawing Is Not To Scale	Asher Broadcast Consulting, LLC justinasher@consultant.com 1(202)875-2986

The National Map Advanced Viewer

Bellevue, FL - WYFZ(FM) *USGS Aerial Photograph of Existing Site*

#1:83.04 ft/25.31 m

Site Coordinates

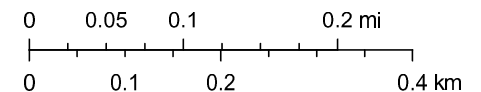
(NGS NADCON)

	Latitude	Longitude
NAD 27 datum:	29 10 36.78436	82 08 41.36775
NAD 83 datum:	29 10 37.70000	82 08 40.70000

Asher Broadcast Consulting LLC
justinasher@consultant.com
1 (202) 875-2986

4/11/2019, 4:18:42 PM

1:9,028



Normal Intermediate Contours

Normal Index Contours

USGS The National Map: Orthimagery. Data refreshed October, 2017.,

USGS

USGS The National Map: Orthimagery | Garrity, C.P., Soller, D.R. | USGS National Map 3D Elevation Program (3DEP) | USGS National Map 3D Elevation Program (3DEP). Data refreshed July, 2018. | USGS TNM - 3D Elevation Program (3DEP). Data refreshed

Bellevue, FL - WYFZ(FM)

HAAT and Miscellaneous Coordinate Information

HAAT Calculation (1927):

N. Lat. = 291037 W. Lng. = 820841
 HAAT and Distance to Contour,
 FCC, FM 2-10 Mi, 51 pts Method - NED 03 SEC

Azi.	AV EL	HAAT	ERP kW	dBk	Field	60-F5
000	24.7	100.3	0.0540	-12.67	0.245	8.87
045	22.4	102.6	0.0260	-15.85	0.170	7.45
090	23.2	101.8	0.0711	-11.48	0.281	9.57
135	27.1	97.9	0.5336	-2.73	0.770	15.43
180	30.2	94.8	0.9000	-0.46	1.000	17.55
225	26.3	98.7	0.9000	-0.46	1.000	17.96
270	25.6	99.4	0.1946	-7.11	0.465	12.07
315	24.4	100.6	0.0706	-11.51	0.280	9.50

Ave El= 25.50 M HAAT= 99.50 M AMSL= 125 M

NAD 1983 to NAD 1927 Conversion:

	<u>Latitude</u>	<u>Longitude</u>
NAD 27 datum values:	29 10 36.78436	82 08 41.36775
NAD 83 datum values:	29 10 37.70000	82 08 40.70000

Various Coordinate Conversion Calculations (NAD 1983):

Position Type	Lat Lon
Degrees Lat Long	29.1771389°, -082.1446389°
Degrees Minutes	29°10.62833', -082°08.67833'
Degrees Minutes Seconds	29°10'37.7000", -082°08'40.7000"
UTM	17R 388698mE 3228153mN
UTM centimeter	17R 388698.94mE 3228153.39mN
MGRS	17RLN8869828153
Grid North	-0.6°
GARS	196KY42
Maidenhead	EL89WE22PM43
GEOREF	GHHQ51321062