

TECHNICAL EXHIBIT
SATELLITE REQUEST FOR STATION
KBEO-DT (FACILITY ID 35103)
JACKSON, WYOMING
CH 11 3.2 KW (MAX-DA) 327 M

Technical Narrative

This Technical Exhibit supports a request for Television Satellite Status for station KBEO at Jackson, Wyoming. KBEO requests to operate as a satellite of co-owned station KPIF (Pocatello, ID).

KBEO and KPIF currently operate under an existing waiver of the local television multiple ownership rule (i.e., there is existing analog Grade B contour overlap). This overlap will continue to exist in the digital world as the predicted Noise-Limited contours for both stations are assumed to be the equivalent to the analog Grade B for ownership study purposes. Figure 1 is a coverage map showing the existing analog and proposed digital contours for both stations. As can be seen, there is proposed overlap between the predicted Noise-Limited contours. This overlap area amounts to 1235 square kilometers in which 896 people reside. This represents 6.0% of the KBEO Noise-Limited service area and 2% of the population. It represents 6.4% of the KPIF Noise-Limited service area and 0.4% of the population.

While the map in Figure 1 does indicate some predicted overlap of DTV City Grade contours, it is apparent that the terrain between the stations will not permit such overlap. Figure 2 is a site-to site terrain profile. As can be seen, the terrain between the stations is not favorable for propagation between the stations.

Figure 3 is a map showing the predicted “Longley-Rice” City Grade coverage for both KBEO-DT and KPIF-DT. As can be seen, there is no common overlap of the City Grade contours. For upper VHF station KBEO-DT, a 5 dB clutter factor was employed, while for UHF station KPIF-DT a 10 dB clutter factor was used. Further Longley-Rice assumptions for both stations are detailed in Figure 4.

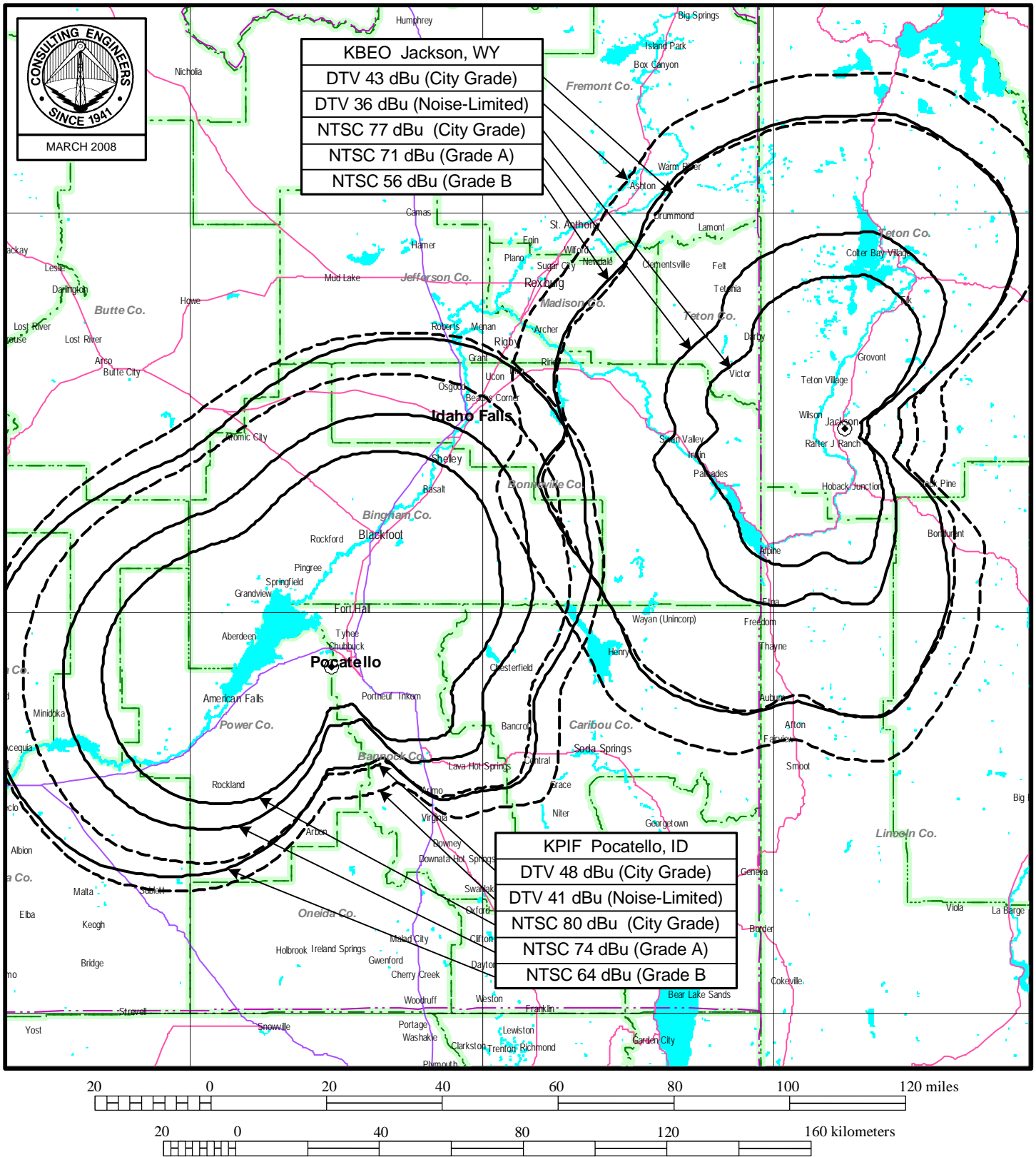


Jonathan N. Edwards

du Treil, Lundin & Rackley, Inc.
201 Fletcher Avenue
Sarasota, Florida 34237
(941) 329-6000
JON@DLR.COM

March 3, 2008

Figure 1



CONTOUR OVERLAP STUDY

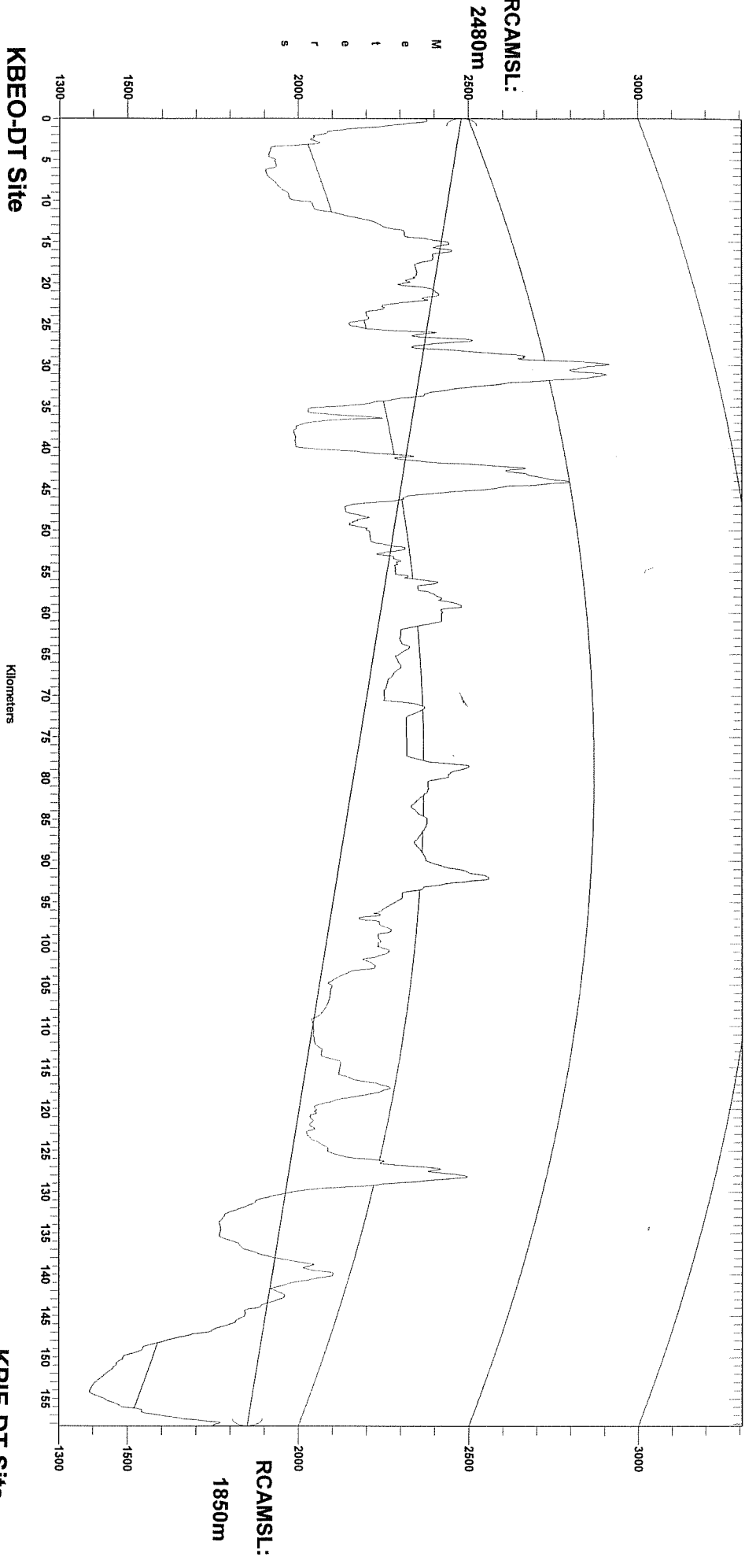
STATIONS KPIF/KBE0

du Treil, Lundin & Rackley, Inc Sarasota, Florida

Figure 2

Path Distance: 158.28 km.
Tx LOS Path Inclination: -0.2279 deg.

Tx LOS Path Inclination: 0.2228 deg.



RCAMSL:

2480m

M
e
t
e
r
s

2600
2000
1500

KBEO-DT Site

43° 27' 42.00" N
110° 45' 10.00" W

Kilometers

1300 0 5 10 15 20 25 30 35 40 45 50 55 60 65 70 75 80 85 90 95 100 105 110 115 120 125 130 135 140 145 150 155

RCAMSL:

1850m

KP1F-DT Site

42° 51' 50.00" N
112° 31' 10.00" W

KEY:

Profile

K = 4/3

Azimuth

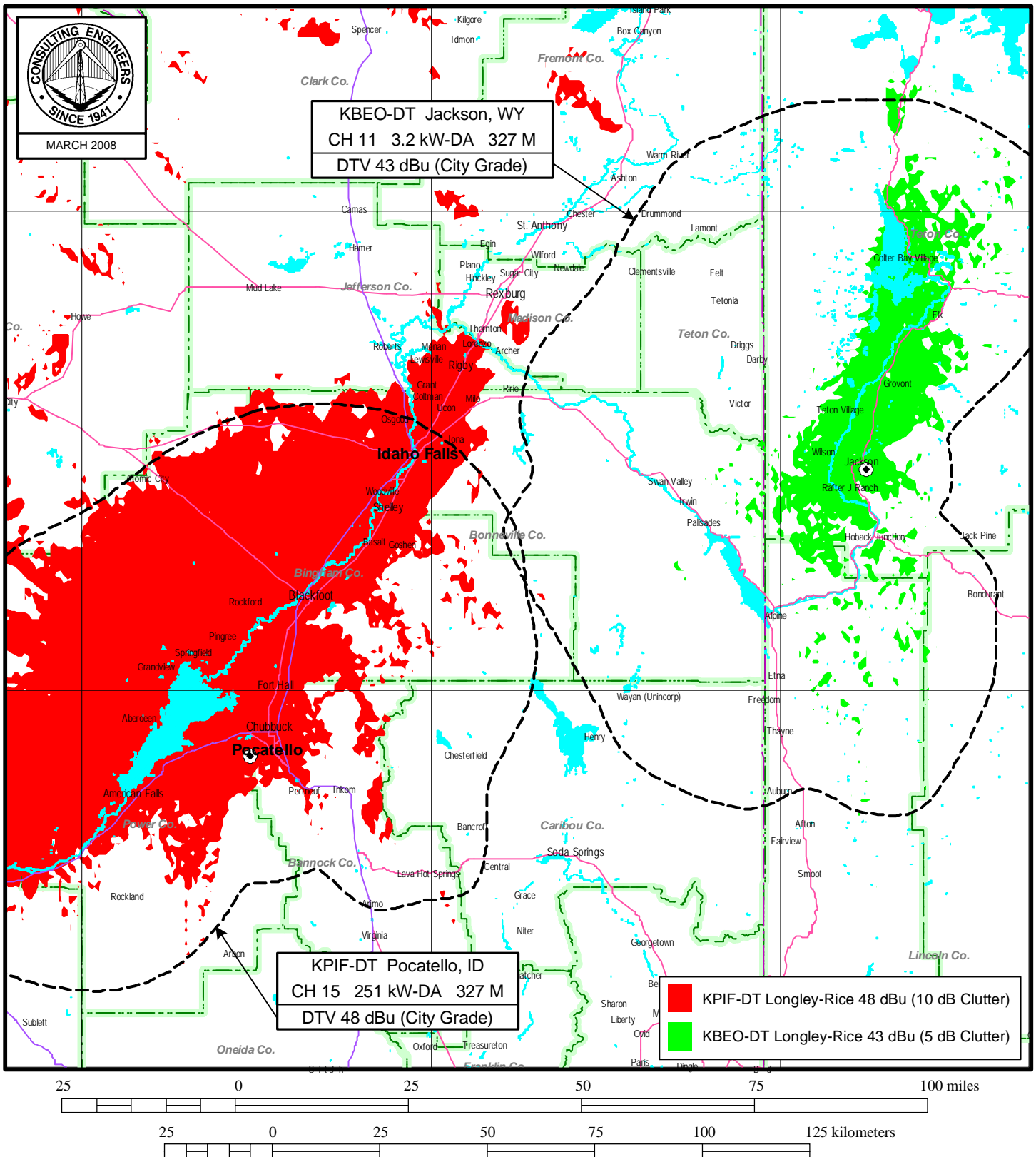
245.799 deg T

Azimuth

064.591 deg T

K = 4/3, F = 0.6°F1

Figure 3



CONTOUR OVERLAP STUDY

STATIONS KPIF/KBEO

du Treil, Lundin & Rackley, Inc Sarasota, Florida

Figure 4

Propagation [32-bit Version]		Station Desc: KBEO_JACKSON_WY	
Machine: JON		Coordinates 43-27-42	
Date and Time: 3/6/2008 9:42:32 AM		(NAD 27) 110-45-10	
System Description		RCAMSL: 2480 m	
Longley-Rice Calculations: Yes		RHAGL: 9.1 m	
Tirem Calculations: No		ERP: 3.2 kW	
Longley-Rice Grid File:		Channel: 11	
j:\jon\lr\KBEO.txt		Frequency: 201 MHz	
Terrain		Polarization: Horizontal	
Database: 1 Second Terrain Database		Time: 90	
Location: o:\nedlsec\		Location: 50	
Spacing: 0.000278 deg		Confidence: 50	
Increment: 0.1 km		Permittivity: 15.0	
Grid Study		Conductivity: 0.005	
Coordinates 043-13-53		Refractivity: 301.0	
(NAD 27) 111-43-58		Climate Code: 5.0	
Cell Size: 0.01 deg		Humidity: 15.0	
Dimensions: 300 x 300		Advanced: Angle to Receiver	
Number of Stations: 1		Grid File: No	
		Horizontal Antenna	
		Antenna ID: 38748	
		Rotation: 0 deg	
		0.00 0.980 10.00 0.950	
		20.00 0.875 30.00 0.775	
		40.00 0.630 50.00 0.470	
		60.00 0.350 70.00 0.230	
		80.00 0.220 90.00 0.225	
		100.00 0.230 110.00 0.225	
		120.00 0.220 130.00 0.230	
		140.00 0.350 150.00 0.470	
		160.00 0.630 170.00 0.775	
		180.00 0.875 190.00 0.950	
		200.00 0.980 210.00 1.000	
		220.00 0.975 230.00 0.940	
		240.00 0.920 250.00 0.925	
		260.00 0.950 270.00 0.970	
		280.00 1.000 290.00 0.970	
		300.00 0.950 310.00 0.925	
		320.00 0.920 330.00 0.940	
		340.00 0.975 350.00 1.000	
		360.00 0.980	

Figure 4

Propagation [32-bit Version]		Station Desc: KPIF_FOCATELLO_ID	
Machine: JON		Coordinates 42-51-50	Vertical Antenna
Date and Time: 3/6/2008 9:52:07 AM		(NAD 27) 112-31-10	
System Description		RCAMSL: 1850 m	
Longley-Rice Calculations: Yes		RHAGL: 9.1 m	
Tirem Calculations: No		ERP: 251 kW	Antenna ID: 0
Longley-Rice Grid File:		Channel: 15	Electrical Tilt: 0 deg
j:\jon\lr\KPIF.txt		Frequency: 479 MHz	Mechanical Tilt: 0 deg
Terrain		Polarization: Horizontal	Mechanical Azimuth: 0 deg
Database: 1 Second Terrain Database		Time: 90	-90.00 1.000 90.00 1.000
Location: o:\nedlsec\		Location: 50	
Spacing: 0.000278 deg		Confidence: 50	
Increment: 0.1 km		Permittivity: 15.0	
Grid Study		Conductivity: 0.005	
Coordinates 043-13-53		Refractivity: 301.0	
(NAD 27) 111-43-58		Climate Code: 5.0	
Cell Size: 0.01 deg		Humidity: 15.0	
Dimensions: 300 x 300		Advanced: Angle to Receiver	
Number of Stations: 1		Grid File: No	
		Horizontal Antenna	
		Antenna ID: 64339	
		Rotation: 0 deg	
		0.00 0.570 10.00 0.745	
		20.00 0.899 30.00 0.987	
		35.00 1.000 40.00 0.993	
		50.00 0.928 60.00 0.796	
		70.00 0.628 80.00 0.441	
		90.00 0.202 100.00 0.195	
		110.00 0.183 120.00 0.182	
		130.00 0.186 140.00 0.190	
		150.00 0.193 160.00 0.189	
		170.00 0.184 180.00 0.181	
		190.00 0.186 200.00 0.212	
		210.00 0.343 220.00 0.517	
		230.00 0.697 240.00 0.858	
		250.00 0.964 260.00 1.000	
		270.00 0.963 280.00 0.842	
		290.00 0.676 300.00 0.502	
		310.00 0.361 320.00 0.270	
		330.00 0.248 340.00 0.297	
		350.00 0.410 360.00 0.570	