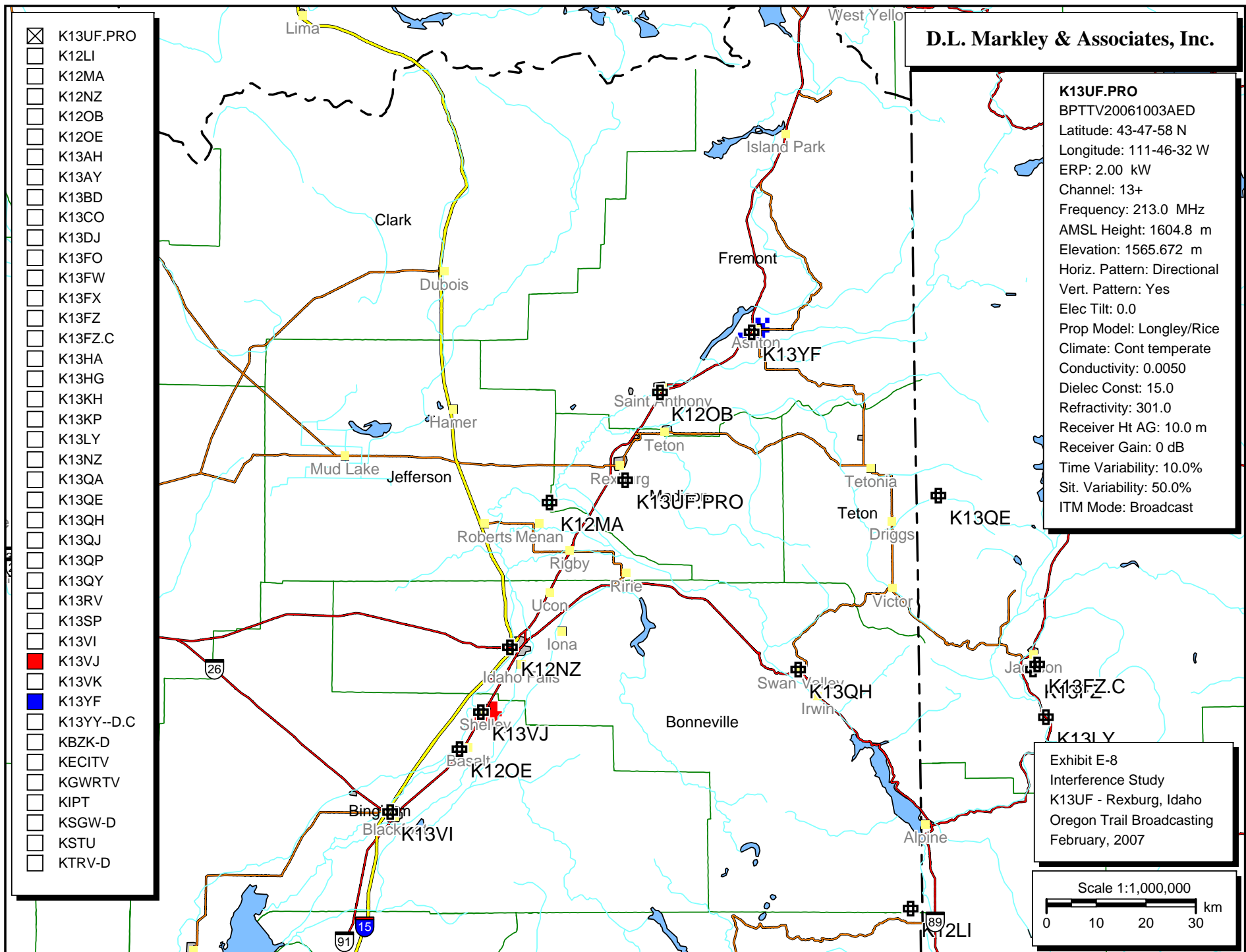


Exhibit E-8

This exhibit contains the interference study for the proposed facility. As permitted under the Commission's Rules, the applicant has chosen to utilize the Longley-Rice propagation model in order to determine compliance with the interference requirements. Contained in the study are three computer generated interference maps and two population tabulations.

As the maps and the tabulations demonstrate, the proposed facility is predicted to cause interference to two translator facilities. Specifically these facilities are K13VJ at Shelley, Idaho and K13YF at Ashton, Idaho. Both of these facilities are licensed to the applicant, and as such, the applicant will either accept the interference to these two facilities from the proposed facility or will terminate the licenses for these two translators.

Pursuant to Commission Rules, the interference areas have been studied under the 1990 Census data. The first of the two tabulations following the maps lists the interference population under this dataset. The second tabulation has been included for reference purposes and details the predicted interference relative to the 2000 Census data.



K13UF.PRO

BPTTV20061003AED

Latitude: 43-47-58 N

Longitude: 111-46-32 W

ERP: 2.00 kW

Channel: 13+

Frequency: 213.0 MHz

AMSL Height: 1604.8 m

Elevation: 1565.672 m

Horiz. Pattern: Directional

Vert. Pattern: Yes

Elec Tilt: 0.0

Prop Model: Longley/Rice

Climate: Cont temperate

Conductivity: 0.0050

Dielec Const: 15.0

Refractivity: 301.0

Receiver Ht AG: 10.0 m


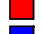
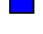
Receiver Gain: 0 dB

Time Variability: 10.0%

Sit. Variability: 50.0%

ITM Mode: Broadcast

D.L. Markley & Associates, Inc.

-  K13UF.PRO
-  K13VJ
-  K13YF

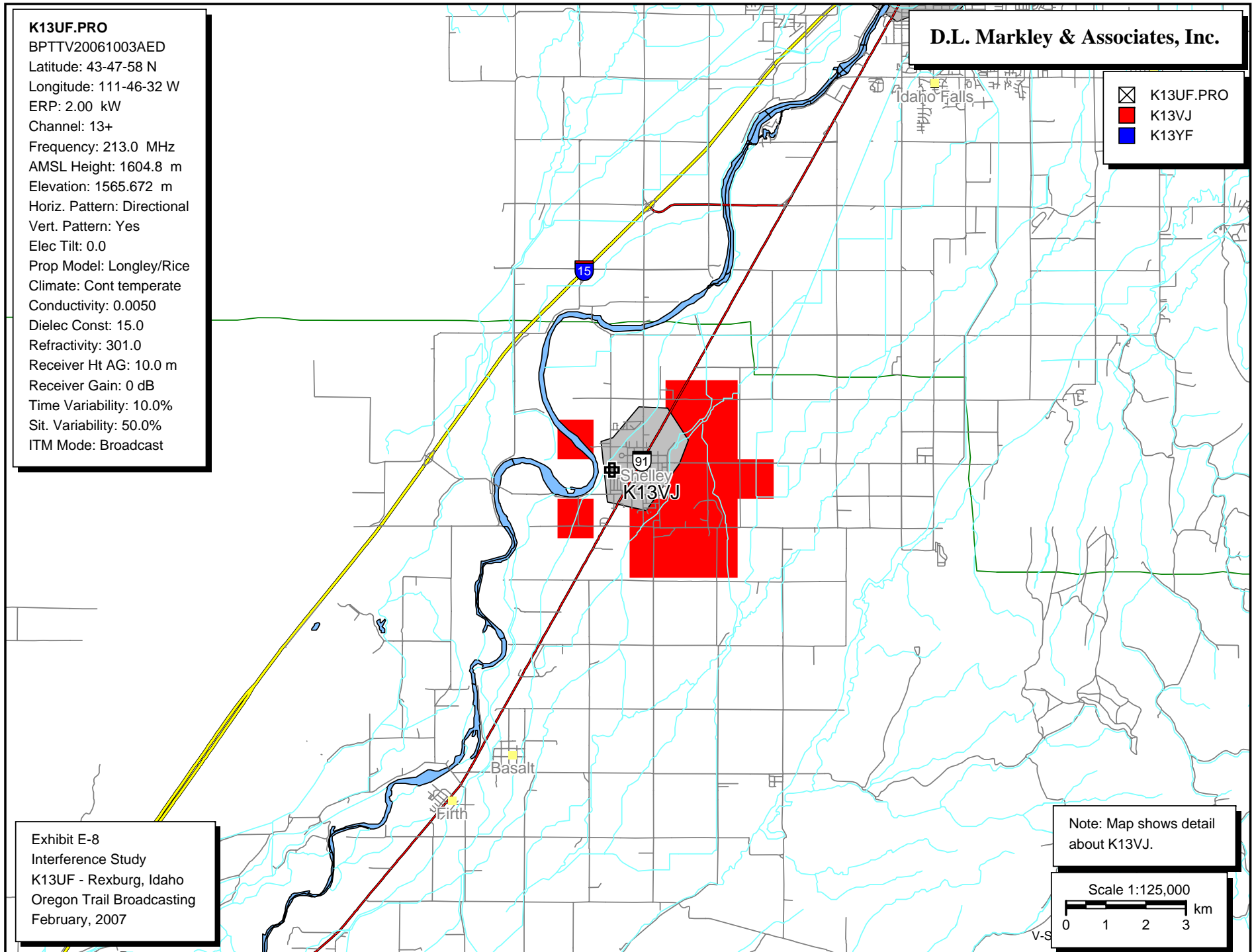


Exhibit E-8
Interference Study
K13UF - Rexburg, Idaho
Oregon Trail Broadcasting
February, 2007

K13UF.PRO

BPTTV20061003AED

Latitude: 43-47-58 N

Longitude: 111-46-32 W

ERP: 2.00 kW

Channel: 13+

Frequency: 213.0 MHz

AMSL Height: 1604.8 m

Elevation: 1565.672 m

Horiz. Pattern: Directional

Vert. Pattern: Yes

Elec Tilt: 0.0

Prop Model: Longley/Rice

Climate: Cont temperate

Conductivity: 0.0050

Dielec Const: 15.0

Refractivity: 301.0

Receiver Ht AG: 10.0 m

Receiver Gain: 0 dB

Time Variability: 10.0%

Sit. Variability: 50.0%

ITM Mode: Broadcast

D.L. Markley & Associates, Inc.

☒ K13UF.PRO
■ K13VJ
■ K13YF

Exhibit E-8
Interference Study
K13UF - Rexburg, Idaho
Oregon Trail Broadcasting
February, 2007

Note: Map shows detail
about K13YF.

Scale 1:125,000

0 1 2 3 km

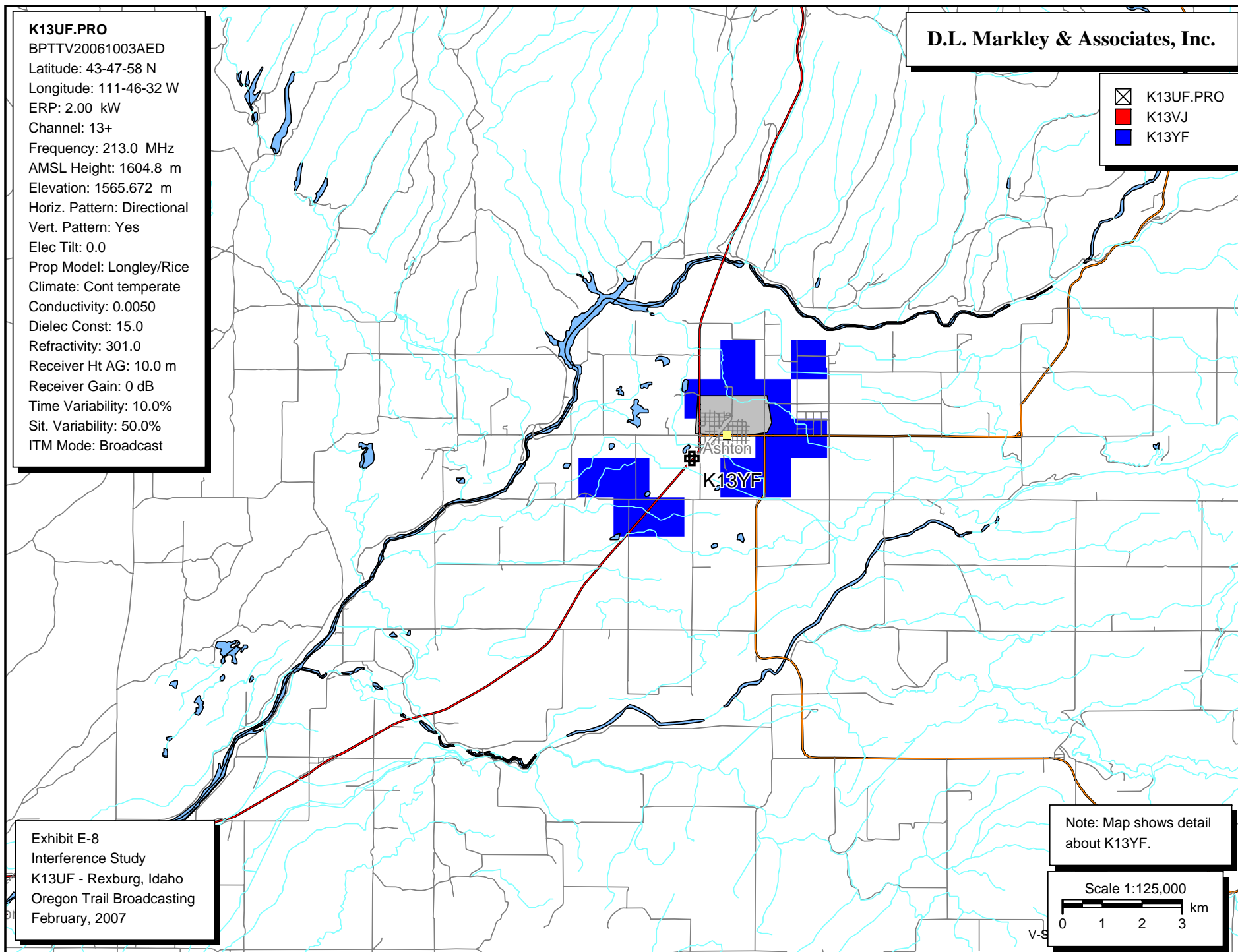


Exhibit E-8
D.L. Markley & Associates, Inc.
Outgoing Interference Population Report

K13UF.PRO (13+) Rexburg, ID - BPTTV20061003AED
Broadcast Type: NTSC Service: X
Lat: 43-47-58 N Lng: 111-46-32 W ERP: 2.0 kW AMSL: 1604.8 m
TV Outgoing Interference Study
Signal Resolution: 1.0 km
Consider NTSC Taboo: Yes
KWX error points are considered to
be interference free coverage.
of radials computed for contours: 72
Contours calculated using 8 radial HAAT.
LR Profile Spacing Increment: 0.1 km
Masked interference points are being counted
as interference free.
Using LPTV/translator D/U rules.
Pop Centroid DB: 1990 US Census (SF1)

Study Date: 2-26-2007
TV Database Date: 02-20-07

Primary Terrain: V-Soft 3 Second US Terrain
Secondary Terrain: V-Soft 30 Second US Database

Population Database: 1990 US Census

Stations Considered:

Call Letters	City	State	Dist	Bear
K12LI (12N)	Thayne, Etc.	WY	103.4	146.3
K12MA (12N)	Rexburg, Etc.	ID	15.8	253.6
K12NZ (12Z)	Idaho Falls	ID	40.7	214.6
K12OB (12+)	St. Anthony	ID	19.0	21.6
K12OE (12+)	Firth & Basalt	ID	63.4	211.6
K13AH (13N)	Inkom	ID	117.7	195.4
K13AY (13N)	Grace, Etc.	ID	130.1	176.7
K13BD (13N)	Big Timber, Etc.	MT	278.5	32.3
K13CO (13N)	Fish Creek, Etc.	ID	132.7	188.1
K13DJ (13N)	Livingston	MT	246.8	27.2
K13FO (13N)	Wood River, Etc.	WY	230.0	81.4
K13FW (13N)	Cooke City, Etc.	MT	202.0	47.0
K13FX (13N)	South Fork, Etc.	WY	187.0	74.0
K13FZ (13N)	Jackson	WY	90.3	114.9
K13FZ.C (13Z)	Jackson	WY	90.6	114.1
K13HA (13N)	Mink Creek	ID	171.9	178.7
K13HG (13N)	Ketchum, Etc.	ID	207.6	267.3
K13KH (13N)	Townsend	MT	276.6	3.6
K13KP (13N)	Boulder	MT	276.4	353.8

K13LY (13N)	Hoback Junction	WY	96.9	119.4
K13NZ (13+)	Shoshoni	WY	307.3	96.2
K13QA (13N)	Clark, Etc.	WY	246.8	58.2
K13QE (13N)	Driggs, Etc.	ID	63.0	92.8
K13QH (13N)	Irwin & Swan Valley	ID	51.5	137.6
K13QJ (13N)	Randolph	UT	243.5	166.6
K13QP (13N)	Fairfield	ID	260.6	258.5
K13QY (13N)	Dingle, Etc.	ID	169.0	166.2
K13RV (13N)	Leadore	ID	159.8	309.9
K13SP (13N)	Sunlight Basin, Etc	WY	219.3	60.2
K13VI (13-)	Blackfoot	ID	81.6	215.3
K13VJ (13+)	Shelley	ID	54.8	211.9
K13VK (13N)	Arco	ID	123.7	261.3
K13YF (13-)	Ashton	ID	39.1	40.5
K13YY--D.C (13)	Gallatin River, Etc	MT	166.7	10.4
KBZK-D (13)	Bozeman	MT	220.3	18.7
KECITV (13-)	Missoula	MT	398.2	334.7
KGWRTV (13Z)	Rock Springs	WY	341.3	139.3
KIPT (13-)	Twin Falls	ID	245.0	241.9
KSGW-D (13)	Sheridan	WY	383.4	74.6
KSTU (13+)	Salt Lake City	UT	350.5	185.9
KTRV-D (13)	Nampa	ID	347.9	270.7

Call	Area	HUnits	Contour	Masked	Ix	Unmasked	Ix	%
K12LI (12N)	0.0	0	183		0		0	0.0
K12MA (12N)	0.0	0	139		0		0	0.0
K12NZ (12Z)	0.0	0	34,000		0		0	0.0
K12OB (12+)	0.0	0	3,128		0		0	0.0
K12OE (12+)	0.0	0	1,451		0		0	0.0
K13AH (13N)	0.0	0	460		0		0	0.0
K13AY (13N)	0.0	0	5,895		0		0	0.0
K13BD (13N)	0.0	0	0		0		0	0.0
K13CO (13N)	0.0	0	517		0		0	0.0
K13DJ (13N)	0.0	0	0		0		0	0.0
K13FO (13N)	0.0	0	51		0		0	0.0
K13FW (13N)	0.0	0	44		0		0	0.0
K13FX (13N)	0.0	0	5		0		0	0.0
K13FZ (13N)	0.0	0	7,327		0		0	0.0
K13FZ.C (13Z)	0.0	0	10,496		0		0	0.0
K13HA (13N)	0.0	0	33		0		0	0.0
K13HG (13N)	0.0	0	1,073		0		0	0.0
K13KH (13N)	0.0	0	37		0		0	0.0
K13KP (13N)	0.0	0	1,229		0		0	0.0
K13LY (13N)	0.0	0	8,194		0		0	0.0
K13NZ (13+)	0.0	0	0		0		0	0.0
K13QA (13N)	0.0	0	0		0		0	0.0
K13QE (13N)	0.0	0	460		0		0	0.0
K13QH (13N)	0.0	0	69		0		0	0.0
K13QJ (13N)	0.0	0	612		0		0	0.0
K13QP (13N)	0.0	0	32		0		0	0.0
K13QY (13N)	0.0	0	2,727		0		0	0.0
K13RV (13N)	0.0	0	0		0		0	0.0

K13SP (13N)	0.0	0	0	0	0	0.0
K13VI (13-)	0.0	0	9,465	0	0	0.0
K13VJ (13+)	14.2	579	4,299	0	2,015	46.9
K13VK (13N)	0.0	0	1,064	0	0	0.0
K13YF (13-)	11.4	112	1,379	0	299	21.7
K13YY--D.C (13)	0.0	0	1,286	0	0	0.0
KBZK-D (13)	0.0	0	73,059	0	0	0.0
KECITV (13-)	0.0	0	142,862	0	0	0.0
KGWRTV (13Z)	0.0	0	45,317	0	0	0.0
KIPT (13-)	0.0	0	99,416	0	0	0.0
KSGW-D (13)	0.0	0	48,307	0	0	0.0
KSTU (13+)	0.0	0	1,448,535	0	0	0.0
KTRV-D (13)	0.0	0	397,064	0	0	0.0

	Housing Units	Population
Idaho		
Bingham County		
Total	12,664	37,583
K13VJ (13+)	579	2,015
Fremont County		
Total	5,961	10,937
K13YF (13-)	112	299

Exhibit E-8
D.L. Markley & Associates, Inc.
Outgoing Interference Population Report
STUDY BASED ON 2000 CENSUS DATA AND INCLUDED FOR REFERENCE ONLY.

K13UF.PRO (13+) Rexburg, ID - BPTTV20061003AED
Broadcast Type: NTSC Service: X
Lat: 43-47-58 N Lng: 111-46-32 W ERP: 2.0 kW AMSL: 1604.8 m
TV Outgoing Interference Study
Signal Resolution: 1.0 km
Consider NTSC Taboo: Yes
KWX error points are considered to
be interference free coverage.
of radials computed for contours: 72
Contours calculated using 8 radial HAAT.
LR Profile Spacing Increment: 0.1 km
Masked interference points are being counted
as interference free.
Using LPTV/translator D/U rules.
Pop Centroid DB: 2000 US Census (SF1)

Study Date: 2-26-2007
TV Database Date: 02-20-07

Primary Terrain: V-Soft 3 Second US Terrain
Secondary Terrain: V-Soft 30 Second US Database

Population Database: 2000 US Census (SF1)

Stations Considered:

Call Letters	City	State	Dist	Bear
K12LI (12N)	Thayne, Etc.	WY	103.4	146.3
K12MA (12N)	Rexburg, Etc.	ID	15.8	253.6
K12NZ (12Z)	Idaho Falls	ID	40.7	214.6
K12OB (12+)	St. Anthony	ID	19.0	21.6
K12OE (12+)	Firth & Basalt	ID	63.4	211.6
K13AH (13N)	Inkom	ID	117.7	195.4
K13AY (13N)	Grace, Etc.	ID	130.1	176.7
K13BD (13N)	Big Timber, Etc.	MT	278.5	32.3
K13CO (13N)	Fish Creek, Etc.	ID	132.7	188.1
K13DJ (13N)	Livingston	MT	246.8	27.2
K13FO (13N)	Wood River, Etc.	WY	230.0	81.4
K13FW (13N)	Cooke City, Etc.	MT	202.0	47.0
K13FX (13N)	South Fork, Etc.	WY	187.0	74.0
K13FZ (13N)	Jackson	WY	90.3	114.9
K13FZ.C (13Z)	Jackson	WY	90.6	114.1
K13HA (13N)	Mink Creek	ID	171.9	178.7
K13HG (13N)	Ketchum, Etc.	ID	207.6	267.3
K13KH (13N)	Townsend	MT	276.6	3.6

K13KP (13N)	Boulder	MT	276.4	353.8
K13LY (13N)	Hoback Junction	WY	96.9	119.4
K13NZ (13+)	Shoshoni	WY	307.3	96.2
K13QA (13N)	Clark, Etc.	WY	246.8	58.2
K13QE (13N)	Driggs, Etc.	ID	63.0	92.8
K13QH (13N)	Irwin & Swan Valley	ID	51.5	137.6
K13QJ (13N)	Randolph	UT	243.5	166.6
K13QP (13N)	Fairfield	ID	260.6	258.5
K13QY (13N)	Dingle, Etc.	ID	169.0	166.2
K13RV (13N)	Leadore	ID	159.8	309.9
K13SP (13N)	Sunlight Basin, Etc	WY	219.3	60.2
K13VI (13-)	Blackfoot	ID	81.6	215.3
K13VJ (13+)	Shelley	ID	54.8	211.9
K13VK (13N)	Arco	ID	123.7	261.3
K13YF (13-)	Ashton	ID	39.1	40.5
K13YY--D.C (13)	Gallatin River, Etc	MT	166.7	10.4
KBZK-D (13)	Bozeman	MT	220.3	18.7
KECITV (13-)	Missoula	MT	398.2	334.7
KGWRTV (13Z)	Rock Springs	WY	341.3	139.3
KIPT (13-)	Twin Falls	ID	245.0	241.9
KSGW-D (13)	Sheridan	WY	383.4	74.6
KSTU (13+)	Salt Lake City	UT	350.5	185.9
KTRV-D (13)	Nampa	ID	347.9	270.7

Call	Area	HUnits	Contour	Masked	Ix	Unmasked	Ix	%
K12LI (12N)	0.0	0	300		0		0	0.0
K12MA (12N)	0.0	0	117		0		0	0.0
K12NZ (12Z)	0.0	0	34,658		0		0	0.0
K12OB (12+)	0.0	0	3,460		0		0	0.0
K12OE (12+)	0.0	0	1,534		0		0	0.0
K13AH (13N)	0.0	0	496		0		0	0.0
K13AY (13N)	0.0	0	6,055		0		0	0.0
K13BD (13N)	0.0	0	30		0		0	0.0
K13CO (13N)	0.0	0	676		0		0	0.0
K13DJ (13N)	0.0	0	0		0		0	0.0
K13FO (13N)	0.0	0	71		0		0	0.0
K13FW (13N)	0.0	0	89		0		0	0.0
K13FX (13N)	0.0	0	11		0		0	0.0
K13FZ (13N)	0.0	0	12,735		0		0	0.0
K13FZ.C (13Z)	0.0	0	17,945		0		0	0.0
K13HA (13N)	0.0	0	18		0		0	0.0
K13HG (13N)	0.0	0	1,161		0		0	0.0
K13KH (13N)	0.0	0	38		0		0	0.0
K13KP (13N)	0.0	0	1,256		0		0	0.0
K13LY (13N)	0.0	0	13,238		0		0	0.0
K13NZ (13+)	0.0	0	37		0		0	0.0
K13QA (13N)	0.0	0	22		0		0	0.0
K13QE (13N)	0.0	0	730		0		0	0.0
K13QH (13N)	0.0	0	36		0		0	0.0
K13QJ (13N)	0.0	0	606		0		0	0.0
K13QP (13N)	0.0	0	75		0		0	0.0
K13QY (13N)	0.0	0	2,851		0		0	0.0

K13RV (13N)	0.0	0	0	0	0	0.0
K13SP (13N)	0.0	0	0	0	0	0.0
K13VI (13-)	0.0	0	10,046	0	0	0.0
K13VJ (13+)	14.2	677	4,575	0	2,199	48.1
K13VK (13N)	0.0	0	1,216	0	0	0.0
K13YF (13-)	11.4	119	1,401	0	284	20.3
K13YY--D.C (13)	0.0	0	1,905	0	0	0.0
KBZK-D (13)	0.0	0	93,020	0	0	0.0
KECITV (13-)	0.0	0	180,776	0	0	0.0
KGWRTV (13Z)	0.0	0	44,167	0	0	0.0
KIPT (13-)	0.0	0	117,313	0	0	0.0
KSGW-D (13)	0.0	0	54,644	0	0	0.0
KSTU (13+)	0.0	0	1,865,403	0	0	0.0
KTRV-D (13)	0.0	0	562,858	0	0	0.0

	Housing Units	Population
Idaho		
Bingham County		
Total	14,303	41,735
K13VJ (13+)	677	2,199
Fremont County		
Total	6,890	11,819
K13YF (13-)	119	284