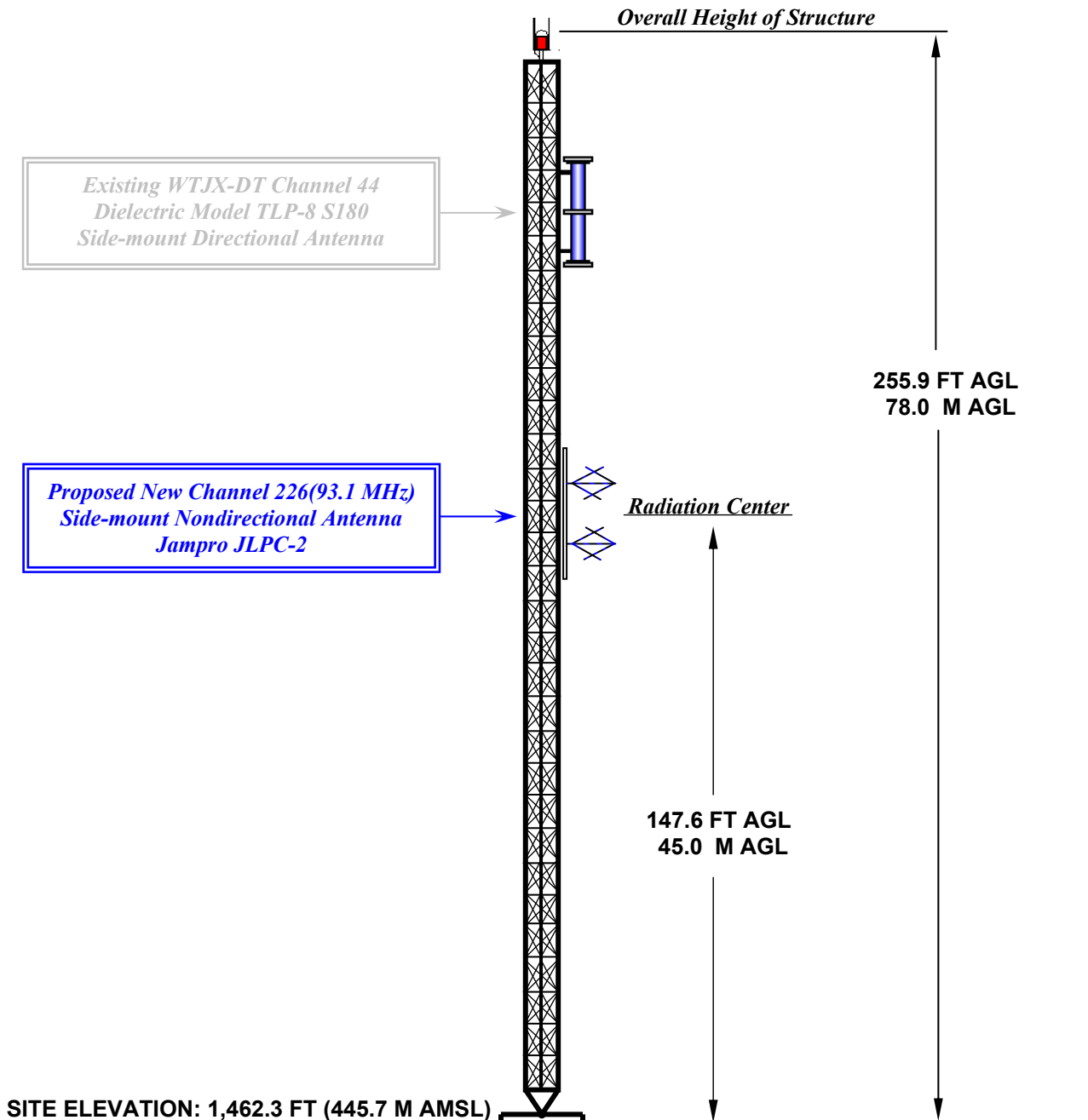


TOWER ELEVATION VIEW



OVERALL HEIGHT AGL: 78.0 M
OVERALL HEIGHT AMSL: 523.7 M
RADIATION CENTER AGL: 45.0 M
RADIATION CENTER AMSL: 490.7 M
RADIATION CENTER HAAT: 476.9 M
AVG OF ALL NON-ODD RADIALS: 13.8 M
SITE HAAT: 431.9 M

COORDINATES (NAD 27):
N. LATITUDE 18° 21' 28"
W. LONGITUDE 64° 56' 53"
Antenna Structure Registration Number:
1244135

NOTE: NOT TO SCALE

Kessler and Gehman Associates, Inc.



Consultants • Broadcast • Wireless
507 NW 60th Street, Suite C
Gainesville, FL 32607
www.kesslerandgehman.com

New Channel 226 (93.1 MHz)

Charlotte Amalie, U.S. Virgin Islands

20141208

EXHIBIT 1