

Exhibit 14
Parties to the Application

Townsquare Media Licensee of Utica/Rome, Inc.

Townsquare Media Licensee of Utica/Rome, Inc. is the proposed assignee in the instant application. The following are the officers, managers, and shareholder of Townsquare Media Licensee of Utica/Rome, Inc.¹

Name and Address	Citizenship	Positional Interest	% of Votes	% of Total Assets
Townsquare Media Licensee of Utica/Rome, Inc. 240 Greenwich Avenue Greenwich, CT 06830	Delaware Corporation	Proposed Assignee	N/A	N/A
Steven Price 240 Greenwich Avenue Greenwich, CT 06830	U.S.	Executive Chairman	0	0
Stuart Rosenstein 240 Greenwich Avenue Greenwich, CT 06830	U.S.	Executive Vice President, Chief Financial Officer and Secretary	0	0
Claire Yenicy 240 Greenwich Avenue Greenwich, CT 06830	U.S.	Executive Vice President- Investor Relations and Corporate Communications	0	0
Dhruv Prasad 240 Greenwich Avenue Greenwich, CT 06830	U.S.	Co-Chief Executive Officer	0	0

¹ The ownership structure of the proposed assignee is shown in Diagram A attached hereto. Townsquare Media Licensee of Utica/Rome, Inc. is in full compliance with the provisions of Section 310 of the Communications Act of 1934, as amended, relating to interests of aliens and foreign governments. The company's compliance certification in this application is made based on its analysis of the entities that hold interests in it. First, regarding control: Townsquare Media, Inc. ("TMI") ultimately is controlled by three U.S. citizens who hold voting interests in the company's ultimate parent, Oaktree Capital Group Holdings GP, LLC. Second, regarding equity: TMI has calculated that the equity holdings of foreign entities fall below the benchmarks provided by Section 310 of the Act. Specifically, based on reports that the company receives regarding the holders of publicly traded stock and its analysis of other equity owners (including non-attributable equity owners), Townsquare has calculated its overall foreign ownership to be less than 25%.

Name and Address	Citizenship	Positional Interest	% of Votes	% of Total Assets
Scott Schatz 240 Greenwich Avenue Greenwich, CT 06830	U.S.	Executive Vice President – Finance, Operations and Technology	0	0
Michael Josephs 240 Greenwich Avenue Greenwich, CT 06830	U.S.	Executive Vice President-Business Development and Mergers & Acquisitions	0	0
Erik Hellum 240 Greenwich Avenue Greenwich, CT 06830	U.S.	Chief Operating Officer, Local Media	0	0
William Wilson 240 Greenwich Avenue Greenwich, CT 06830	U.S.	Co-Chief Executive Officer	0	0
Mark Stewart 240 Greenwich Avenue Greenwich, CT 06830	U.S.	Executive Vice President and Chief Strategic Officer	0	0
Christopher Kitchen 240 Greenwich Avenue Greenwich, CT 06830	U.S.	Executive Vice President and General Counsel	0	0
Townsquare Media of Utica/Rome, Inc. 240 Greenwich Avenue Greenwich, CT 06830	Delaware Corporation	Sole Shareholder	100%	100%

Townsquare Media of Utica/Rome, Inc.

The following are the officers, managers, and shareholder of Townsquare Media of Utica-Rome, Inc.

Name and Address	Citizenship	Positional Interest	% of Votes	% of Total Assets
Townsquare Media of Utica/Rome, Inc. 240 Greenwich Avenue Greenwich, CT 06830	Delaware Corporation	N/A	N/A	N/A

Name and Address	Citizenship	Positional Interest	% of Votes	% of Total Assets
Steven Price 240 Greenwich Avenue Greenwich, CT 06830	U.S.	Executive Chairman	0	0
Stuart Rosenstein 240 Greenwich Avenue Greenwich, CT 06830	U.S.	Executive Vice President, Chief Financial Officer and Secretary	0	0
Claire Yenicy 240 Greenwich Avenue Greenwich, CT 06830	U.S.	Executive Vice President- Investor Relations and Corporate Communications	0	0
Dhruv Prasad 240 Greenwich Avenue Greenwich, CT 06830	U.S.	Co-Chief Executive Officer	0	0
Scott Schatz 240 Greenwich Avenue Greenwich, CT 06830	U.S.	Executive Vice President – Finance, Operations and Technology	0	0
Michael Josephs 240 Greenwich Avenue Greenwich, CT 06830	U.S.	Executive Vice President- Business Development and Mergers & Acquisitions	0	0
Erik Hellum 240 Greenwich Avenue Greenwich, CT 06830	U.S.	Chief Operating Officer, Local Media	0	0
William Wilson 240 Greenwich Avenue Greenwich, CT 06830	U.S.	Co-Chief Executive Officer	0	0
Mark Stewart 240 Greenwich Avenue Greenwich, CT 06830	U.S.	Executive Vice President and Chief Strategic Officer	0	0
Christopher Kitchen 240 Greenwich Avenue Greenwich, CT 06830	U.S.	Executive Vice President and General Counsel	0	0
Townsquare Media Broadcasting, LLC 240 Greenwich Avenue Greenwich, CT 06830	Delaware Limited Liability Company	Sole Member	100%	100%

Townsquare Media Broadcasting, LLC

The following are the officers, managers, and member of Townsquare Media Broadcasting, LLC:

Name and Address	Citizenship	Positional Interest	% of Votes	% of Total Assets
Townsquare Media Broadcasting, LLC 240 Greenwich Avenue Greenwich, CT 06830	Delaware Limited Liability Company	N/A	N/A	N/A
Steven Price 240 Greenwich Avenue Greenwich, CT 06830	U.S.	Executive Chairman	0	0
Stuart Rosenstein 240 Greenwich Avenue Greenwich, CT 06830	U.S.	Executive Vice President, Chief Financial Officer and Secretary	0	0
Claire Yenicy 240 Greenwich Avenue Greenwich, CT 06830	U.S.	Executive Vice President- Investor Relations and Corporate Communications	0	0
Dhruv Prasad 240 Greenwich Avenue Greenwich, CT 06830	U.S.	Co-Chief Executive Officer	0	0
Scott Schatz 240 Greenwich Avenue Greenwich, CT 06830	U.S.	Executive Vice President – Finance, Operations and Technology	0	0
Michael Josephs 240 Greenwich Avenue Greenwich, CT 06830	U.S.	Executive Vice President- Business Development and Mergers & Acquisitions	0	0
Erik Hellum 240 Greenwich Avenue Greenwich, CT 06830	U.S.	Chief Operating Officer, Local Media	0	0
William Wilson 240 Greenwich Avenue Greenwich, CT 06830	U.S.	Co-Chief Executive Officer	0	0

Name and Address	Citizenship	Positional Interest	% of Votes	% of Total Assets
Mark Stewart 240 Greenwich Avenue Greenwich, CT 06830	U.S.	Executive Vice President and Chief Strategic Officer	0	0
Christopher Kitchen 240 Greenwich Avenue Greenwich, CT 06830	U.S.	Executive Vice President and General Counsel	0	0
Townsquare Media 2010, Inc. 240 Greenwich Avenue Greenwich, CT 06830	Delaware Corporation	Sole Member	100%	100%

Townsquare Media 2010, Inc.

The following are the officers, managers, and shareholder of Townsquare Media 2010, Inc.:

Name and Address	Citizenship	Positional Interest	% of Votes	% of Total Assets
Townsquare Media 2010, Inc. 240 Greenwich Avenue Greenwich, CT 06830	Delaware Corporation	N/A	N/A	N/A
Steven Price 240 Greenwich Avenue Greenwich, CT 06830	U.S.	Executive Chairman	0	0
Stuart Rosenstein 240 Greenwich Avenue Greenwich, CT 06830	U.S.	Executive Vice President, Chief Financial Officer and Secretary	0	0
Claire Yenicay 240 Greenwich Avenue Greenwich, CT 06830	U.S.	Executive Vice President- Investor Relations and Corporate Communications	0	0
Dhruv Prasad 240 Greenwich Avenue Greenwich, CT 06830	U.S.	Co-Chief Executive Officer	0	0

Name and Address	Citizenship	Positional Interest	% of Votes	% of Total Assets
Scott Schatz 240 Greenwich Avenue Greenwich, CT 06830	U.S.	Executive Vice President – Finance, Operations and Technology	0	0
Michael Josephs 240 Greenwich Avenue Greenwich, CT 06830	U.S.	Executive Vice President-Business Development and Mergers & Acquisitions	0	0
Erik Hellum 240 Greenwich Avenue Greenwich, CT 06830	U.S.	Chief Operating Officer, Local Media	0	0
William Wilson 240 Greenwich Avenue Greenwich, CT 06830	U.S.	Co-Chief Executive Officer	0	0
Mark Stewart 240 Greenwich Avenue Greenwich, CT 06830	U.S.	Executive Vice President and Chief Strategic Officer	0	0
Christopher Kitchen 240 Greenwich Avenue Greenwich, CT 06830	U.S.	Executive Vice President and General Counsel	0	0
Townsquare Radio, Inc. 240 Greenwich Avenue Greenwich, CT 06830	Delaware Corporation	Sole Shareholder	100%	100%

Townsquare Radio, Inc.

The following are the officers, managers, and shareholder of Townsquare Radio, Inc.:

Name and Address	Citizenship	Positional Interest	% of Votes	% of Total Assets
Townsquare Radio, Inc. 240 Greenwich Avenue Greenwich, CT 06830	Delaware Corporation	N/A	N/A	N/A
Steven Price 240 Greenwich Avenue Greenwich, CT 06830	U.S.	Executive Chairman	0	0

Name and Address	Citizenship	Positional Interest	% of Votes	% of Total Assets
Stuart Rosenstein 240 Greenwich Avenue Greenwich, CT 06830	U.S.	Executive Vice President, Chief Financial Officer and Secretary	0	0
Claire Yenicy 240 Greenwich Avenue Greenwich, CT 06830	U.S.	Executive Vice President- Investor Relations and Corporate Communications	0	0
Dhruv Prasad 240 Greenwich Avenue Greenwich, CT 06830	U.S.	Co-Chief Executive Officer	0	0
Scott Schatz 240 Greenwich Avenue Greenwich, CT 06830	U.S.	Executive Vice President – Finance, Operations and Technology	0	0
Michael Josephs 240 Greenwich Avenue Greenwich, CT 06830	U.S.	Executive Vice President- Business Development and Mergers & Acquisitions	0	0
Erik Hellum 240 Greenwich Avenue Greenwich, CT 06830	U.S.	Chief Operating Officer, Local Media	0	0
William Wilson 240 Greenwich Avenue Greenwich, CT 06830	U.S.	Co-Chief Executive Officer	0	0
Mark Stewart 240 Greenwich Avenue Greenwich, CT 06830	U.S.	Executive Vice President and Chief Strategic Officer	0	0
Christopher Kitchen 240 Greenwich Avenue Greenwich, CT 06830	U.S.	Executive Vice President and General Counsel	0	0
Townsquare Radio, LLC 240 Greenwich Avenue Greenwich, CT 06830	Delaware Limited Liability Company	Sole Shareholder	100%	100%

Townsquare Radio, LLC

The following are the officers, managers, and member of Townsquare Radio, LLC:

Name and Address	Citizenship	Positional Interest	% of Votes	% of Total Assets
Townsquare Radio, LLC 240 Greenwich Avenue Greenwich, CT 06830	Delaware Limited Liability Company	N/A	N/A	N/A
Steven Price 240 Greenwich Avenue Greenwich, CT 06830	U.S.	Executive Chairman	0	0
Stuart Rosenstein 240 Greenwich Avenue Greenwich, CT 06830	U.S.	Executive Vice President, Chief Financial Officer and Secretary	0	0
Claire Yenicay 240 Greenwich Avenue Greenwich, CT 06830	U.S.	Executive Vice President- Investor Relations and Corporate Communications	0	0
Dhruv Prasad 240 Greenwich Avenue Greenwich, CT 06830	U.S.	Co-Chief Executive Officer	0	0
Scott Schatz 240 Greenwich Avenue Greenwich, CT 06830	U.S.	Executive Vice President – Finance, Operations and Technology	0	0
Michael Josephs 240 Greenwich Avenue Greenwich, CT 06830	U.S.	Executive Vice President- Business Development and Mergers & Acquisitions	0	0
Erik Hellum 240 Greenwich Avenue Greenwich, CT 06830	U.S.	Chief Operating Officer, Local Media	0	0
William Wilson 240 Greenwich Avenue Greenwich, CT 06830	U.S.	Co-Chief Executive Officer	0	0
Mark Stewart 240 Greenwich Avenue Greenwich, CT 06830	U.S.	Executive Vice President and Chief Strategic Officer	0	0

Name and Address	Citizenship	Positional Interest	% of Votes	% of Total Assets
Christopher Kitchen 240 Greenwich Avenue Greenwich, CT 06830	U.S.	Executive Vice President and General Counsel	0	0
Townsquare Radio Holdings, LLC 240 Greenwich Avenue Greenwich, CT 06830	Delaware Limited Liability Company	Sole Member	100%	100%

Townsquare Radio Holdings, LLC

The following are the officers, managers, and member of Townsquare Radio Holdings, LLC:

Name and Address	Citizenship	Positional Interest	% of Votes	% of Total Assets
Townsquare Radio Holdings, LLC 240 Greenwich Avenue Greenwich, CT 06830	Delaware Limited Liability Company	N/A	N/A	N/A
Steven Price 240 Greenwich Avenue Greenwich, CT 06830	U.S.	Executive Chairman	0	0
Stuart Rosenstein 240 Greenwich Avenue Greenwich, CT 06830	U.S.	Executive Vice President, Chief Financial Officer and Secretary	0	0
Claire Yenicay 240 Greenwich Avenue Greenwich, CT 06830	U.S.	Executive Vice President- Investor Relations and Corporate Communications	0	0
Dhruv Prasad 240 Greenwich Avenue Greenwich, CT 06830	U.S.	Co-Chief Executive Officer	0	0
Scott Schatz 240 Greenwich Avenue Greenwich, CT 06830	U.S.	Executive Vice President – Finance, Operations and Technology	0	0

Name and Address	Citizenship	Positional Interest	% of Votes	% of Total Assets
Michael Josephs 240 Greenwich Avenue Greenwich, CT 06830	U.S.	Executive Vice President- Business Development and Mergers & Acquisitions	0	0
Erik Hellum 240 Greenwich Avenue Greenwich, CT 06830	U.S.	Chief Operating Officer, Local Media	0	0
William Wilson 240 Greenwich Avenue Greenwich, CT 06830	U.S.	Co-Chief Executive Officer	0	0
Mark Stewart 240 Greenwich Avenue Greenwich, CT 06830	U.S.	Executive Vice President and Chief Strategic Officer	0	0
Christopher Kitchen 240 Greenwich Avenue Greenwich, CT 06830	U.S.	Executive Vice President and General Counsel	0	0
Townsquare Management Company, LLC 240 Greenwich Avenue Greenwich, CT 06830	Delaware Limited Liability Company	Sole Member	100%	100%

Townsquare Management Company, LLC

The following are the officers, managers, and member of Townsquare Management Company, LLC:

Name and Address	Citizenship	Positional Interest	% of Votes	% of Total Assets
Townsquare Management Company, LLC 240 Greenwich Avenue Greenwich, CT 06830	Delaware Limited Liability Company	N/A	N/A	N/A
Steven Price 240 Greenwich Avenue Greenwich, CT 06830	U.S.	Executive Chairman	0	0

Name and Address	Citizenship	Positional Interest	% of Votes	% of Total Assets
Stuart Rosenstein 240 Greenwich Avenue Greenwich, CT 06830	U.S.	Executive Vice President, Chief Financial Officer and Secretary	0	0
Claire Yenicy 240 Greenwich Avenue Greenwich, CT 06830	U.S.	Executive Vice President- Investor Relations and Corporate Communications	0	0
Dhruv Prasad 240 Greenwich Avenue Greenwich, CT 06830	U.S.	Co-Chief Executive Officer	0	0
Scott Schatz 240 Greenwich Avenue Greenwich, CT 06830	U.S.	Executive Vice President – Finance, Operations and Technology	0	0
Michael Josephs 240 Greenwich Avenue Greenwich, CT 06830	U.S.	Executive Vice President- Business Development and Mergers & Acquisitions	0	0
Erik Hellum 240 Greenwich Avenue Greenwich, CT 06830	U.S.	Chief Operating Officer, Local Media	0	0
William Wilson 240 Greenwich Avenue Greenwich, CT 06830	U.S.	Co-Chief Executive Officer	0	0
Mark Stewart 240 Greenwich Avenue Greenwich, CT 06830	U.S.	Executive Vice President and Chief Strategic Officer	0	0
Christopher Kitchen 240 Greenwich Avenue Greenwich, CT 06830	U.S.	Executive Vice President and General Counsel	0	0
Townsquare Media, Inc. 240 Greenwich Avenue Greenwich, CT 06830	Delaware Corporation	Sole Member	100%	100%

Townsquare Media, Inc.

The following are the officers, directors and attributable stockholders of Townsquare Media, Inc.:

Name and Address	Citizenship	Positional Interest	% of Votes	% of Total Assets
Townsquare Media, Inc. 240 Greenwich Avenue Greenwich, CT 06830	Delaware Corporation	N/A	N/A	N/A
Steven Price 240 Greenwich Avenue Greenwich, CT 06830	U.S.	Executive Chairman	3%	1%
Stuart Rosenstein 240 Greenwich Avenue Greenwich, CT 06830	U.S.	Executive Vice President, Chief Financial Officer, Secretary and Stockholder	2%	0
Claire Yenicay 240 Greenwich Avenue Greenwich, CT 06830	U.S.	Executive Vice President- Investor Relations and Corporate Communications	<1%	0
Dhruv Prasad 240 Greenwich Avenue Greenwich, CT 06830	U.S.	Co-Chief Executive Officer	1%	0
Scott Schatz 240 Greenwich Avenue Greenwich, CT 06830	U.S.	Executive Vice President – Finance, Operations and Technology and Stockholder	1%	0
Michael Josephs 240 Greenwich Avenue Greenwich, CT 06830	U.S.	Executive Vice President- Business Development and Mergers & Acquisitions	<1%	0
Erik Hellum 240 Greenwich Avenue Greenwich, CT 06830	U.S.	Chief Operating Officer, Local Media	<1%	0
William Wilson 240 Greenwich Avenue Greenwich, CT 06830	U.S.	Co-Chief Executive Officer	<1%	0

Name and Address	Citizenship	Positional Interest	% of Votes	% of Total Assets
Mark Stewart 240 Greenwich Avenue Greenwich, CT 06830	U.S.	Executive Vice President and Chief Strategic Officer	<1%	0
Christopher Kitchen 240 Greenwich Avenue Greenwich, CT 06830	U.S.	Executive Vice President and General Counsel	0	0
Stephen Kaplan c/o Townsquare Media, Inc. 240 Greenwich Avenue Greenwich, CT 06830	U.S.	Director	0	0
B. James Ford c/o Townsquare Media, Inc. 240 Greenwich Avenue Greenwich, CT 06830	U.S.	Director	0	0
David Quick c/o Oaktree Capital Management, L.P. 333 South Grand Avenue 28th Floor Los Angeles, CA 90071	U.S.	Director	0	0
David Lebow 7 Round Pond Road Westport. CT 06880	U.S.	Director	<1%	0
Gary Ginsberg 183 W. 10th Street New York, NY 10014	U.S.	Director	<1%	0
OCM POF IV AIF GAP Holdings, L.P. c/o Oaktree Capital Management, L.P. 333 South Grand Avenue 28th Floor Los Angeles, CA 90071	Delaware Limited Partnership	Stockholder	34.4%	28%

Name and Address	Citizenship	Positional Interest	% of Votes	% of Total Assets
OCM PF/FF Radio Holdings PT, L.P. c/o Oaktree Capital Management, L.P. 333 South Grand Avenue 28th Floor Los Angeles, CA 90071	Delaware Limited Partnership	Stockholder	18.1%	18%

OCM POF IV AIF GAP Holdings, L.P.

The following are the general and limited partners of OCM POF IV AIF GAP Holdings, L.P.²:

Name and Address	Citizenship	Positional Interest	% of Votes	% of Total Assets
OCM POF IV AIF GAP Holdings, L.P. c/o Oaktree Capital Management, L.P. 333 South Grand Avenue 28th Floor Los Angeles, CA 90071	Delaware Limited Partnership	N/A	N/A	N/A
OCM/GAP Holdings IV, LLC c/o Oaktree Capital Management, L.P. 333 South Grand Avenue 28th Floor Los Angeles, CA 90071	Delaware Limited Liability Company	General Partner	100%	41%

² The allocation of distributions by OCM POF IV AIF GAP Holdings, L.P. between its partners is not fixed. Instead, such allocation varies depending upon (i) the composition of investors at OCM Principal Opportunities Fund IV AIF (Delaware), L.P. ("Fund IV") and (ii) the amount of profit from Fund IV's investments allocated to Fund IV.

Name and Address	Citizenship	Positional Interest	% of Votes	% of Total Assets
OCM Principal Opportunities Fund IV AIF (Delaware), L.P. c/o Oaktree Capital Management, L.P. 333 South Grand Avenue 28th Floor Los Angeles, CA 90071	Delaware Limited Partnership	Limited Partner	0	59%

OCM PF/FF Radio Holdings PT, L.P.

The following are the general partners of OCM PF/FF Radio Holdings PT, L.P.³:

Name and Address	Citizenship	Positional Interest	% of Votes	% of Total Assets
OCM PF/FF Radio Holdings PT, L.P. c/o Oaktree Capital Management, L.P. 333 South Grand Avenue 28th Floor Los Angeles, CA 90071	Delaware Limited Partnership	N/A	N/A	N/A
Oaktree Fund AIF Series, L.P. – Series I c/o Oaktree Capital Management, L.P. 333 South Grand Avenue 28th Floor Los Angeles, CA 90071	Delaware Limited Partnership	General Partner	50%	0

³ The two general partners of OCM PF/FF Radio Holdings PT, L.P. collectively hold 100% of the votes and 2% of the assets of the company. The remaining 98% of the assets of OCM PF/FF Radio Holdings PT, L.P. are held by non-attributable passive investors holding limited partnership interests that are fully insulated from involvement in the operations of Townsquare's media-related activities.

Name and Address	Citizenship	Positional Interest	% of Votes	% of Total Assets
Oaktree Fund AIF Series, L.P. – Series D c/o Oaktree Capital Management, L.P. 333 South Grand Avenue 28th Floor Los Angeles, CA 90071	Delaware Limited Partnership	General Partner	50%	2%

Oaktree Fund AIF Series, L.P. – Series I

The following are the general and limited partners of Oaktree Fund AIF Series, L.P. – Series I:

Name and Address	Citizenship	Positional Interest	% of Votes	% of Total Assets
Oaktree Fund AIF Series, L.P. – Series I c/o Oaktree Capital Management, L.P. 333 South Grand Avenue 28th Floor Los Angeles, CA 90071	Delaware Limited Partnership	N/A	N/A	N/A
Oaktree Fund GP AIF, LLC c/o Oaktree Capital Management, L.P. 333 South Grand Avenue 28th Floor Los Angeles, CA 90071	Delaware Limited Liability Company	General Partner	100%	0
Oaktree Fund GP III, L.P. c/o Oaktree Capital Management, L.P. 333 South Grand Avenue 28th Floor Los Angeles, CA 90071	Delaware Limited Partnership	Limited Partner	0	100%

Oaktree Fund AIF Series, L.P. – Series D

The following are the general and limited partners of Oaktree Fund AIF Series, L.P. – Series D:

Name and Address	Citizenship	Positional Interest	% of Votes	% of Total Assets
Oaktree Fund AIF Series, L.P. – Series D c/o Oaktree Capital Management, L.P. 333 South Grand Avenue 28th Floor Los Angeles, CA 90071	Delaware Limited Partnership	N/A	N/A	N/A
Oaktree Fund GP AIF, LLC c/o Oaktree Capital Management, L.P. 333 South Grand Avenue 28th Floor Los Angeles, CA 90071	Delaware Limited Liability Company	General Partner	100%	0
Oaktree Fund GP III, L.P. c/o Oaktree Capital Management, L.P. 333 South Grand Avenue 28th Floor Los Angeles, CA 90071	Delaware Limited Partnership	Limited Partner	0	100%

Oaktree Fund GP AIF, LLC

The following is the sole member of Oaktree Fund GP AIF, LLC:

Name and Address	Citizenship	Positional Interest	% of Votes	% of Total Assets
Oaktree Fund GP AIF, LLC c/o Oaktree Capital Management, L.P. 333 South Grand Avenue 28th Floor Los Angeles, CA 90071	Delaware Limited Liability Company	N/A	N/A	N/A
Oaktree Fund GP III, L.P. c/o Oaktree Capital Management, L.P. 333 South Grand Avenue 28th Floor Los Angeles, CA 90071	Delaware Limited Partnership	Sole Member	100%	100%

Oaktree Fund GP III, L.P.

The following is the general partner of Oaktree Fund GP III, L.P.⁴:

Name and Address	Citizenship	Positional Interest	% of Votes	% of Total Assets
Oaktree Fund GP III, L.P. c/o Oaktree Capital Management, L.P. 333 South Grand Avenue 28th Floor Los Angeles, CA 90071	Delaware Limited Partnership	N/A	N/A	N/A
Oaktree AIF Investments, L.P. c/o Oaktree Capital Management, L.P. 333 South Grand Avenue 28th Floor Los Angeles, CA 90071	Delaware Limited Partnership	General Partner	100%	50%

⁴ Oaktree AIF Investments, L.P. has an ownership interest in Oaktree Fund GP III, L.P. as a general partner, and certain investment professionals who are employees of Oaktree have an ownership interest as limited partners. These investment professionals receive their incentive compensation in the underlying investment funds through Oaktree Fund GP III, L.P., and the percentage of assets and equity attributable to the investment professionals (and, correspondingly, to Oaktree AIF Investments, L.P., the general partner) vary as new funds are added underneath and old funds liquidate. Moreover, different investment professionals have interests that are separated into different series designations, making a single percentage difficult to calculate. Accordingly, the percentage of Total Assets shown is an approximation.

OCM/GAP Holdings IV, LLC

The following are the officers and member of OCM/GAP Holdings IV, LLC:

Name and Address	Citizenship	Positional Interest	% of Votes	% of Total Assets
OCM/GAP Holdings IV, LLC c/o Oaktree Capital Management, L.P. 333 South Grand Avenue 28th Floor Los Angeles, CA 90071	Delaware Limited Liability Company	N/A	N/A	N/A
David Quick c/o Oaktree Capital Management, L.P. 333 South Grand Avenue 28th Floor Los Angeles, CA 90071	U.S.	President and Secretary	0	0
OCM Principal Opportunities Fund IV AIF (Delaware), L.P. c/o Oaktree Capital Management, L.P. 333 South Grand Avenue 28th Floor Los Angeles, CA 90071	Delaware Limited Partnership	Sole Member	100%	100%

OCM Principal Opportunities Fund IV AIF (Delaware), L.P.

The following is the general partner of OCM Principal Opportunities Fund IV AIF (Delaware), L.P.⁵:

Name and Address	Citizenship	Positional Interest	% of Votes	% of Total Assets
OCM Principal Opportunities Fund IV AIF (Delaware), L.P. c/o Oaktree Capital Management, L.P. 333 South Grand Avenue 28th Floor Los Angeles, CA 90071	Delaware Limited Partnership	N/A	N/A	N/A
Oaktree Fund AIF Series, L.P. – Series B c/o Oaktree Capital Management, L.P. 333 South Grand Avenue 28th Floor Los Angeles, CA 90071	Delaware Limited Partnership	General Partner	100%	2%

Oaktree Fund AIF Series, L.P. – Series B

The following are the general partner and limited partner of Oaktree Fund AIF Series, L.P. – Series B:

⁵ The general partner of OCM Principal Opportunities Fund IV AIF (Delaware), L.P. holds 100% of the votes and 2% of the assets of the company. The remaining 98% of the assets of OCM Principal Opportunities Fund IV AIF (Delaware), L.P. are held by non-attributable passive investors holding limited partnership interests that are fully insulated from involvement in the operations of Townsquare's media-related activities.

Name and Address	Citizenship	Positional Interest	% of Votes	% of Total Assets
Oaktree Fund AIF Series, L.P. – Series B c/o Oaktree Capital Management, L.P. 333 South Grand Avenue 28th Floor Los Angeles, CA 90071	Delaware Limited Partnership	N/A	N/A	N/A
Oaktree Fund GP AIF, LLC c/o Oaktree Capital Management, L.P. 333 South Grand Avenue 28th Floor Los Angeles, CA 90071	Delaware Limited Liability Company	General Partner	100%	0
Oaktree Fund GP III, LP c/o Oaktree Capital Management, L.P. 333 South Grand Avenue 28th Floor Los Angeles, CA 90071	Delaware Limited Partnership	Limited Partner	0	100%

Oaktree AIF Investments, L.P.

The following are the officers, general partner, and limited partners of Oaktree AIF Investments, L.P.:

Name and Address	Citizenship	Positional Interest	% of Votes	% of Total Assets
Oaktree AIF Investments, L.P. c/o Oaktree Capital Management, L.P. 333 South Grand Avenue 28th Floor Los Angeles, CA 90071	Delaware Limited Partnership	N/A	N/A	N/A

Name and Address	Citizenship	Positional Interest	% of Votes	% of Total Assets
Howard Marks c/o Oaktree Capital Management, L.P. 333 South Grand Avenue 28th Floor Los Angeles, CA 90071	U.S.	Co-Chairman	0	0
Bruce Karsh c/o Oaktree Capital Management, L.P. 333 South Grand Avenue 28th Floor Los Angeles, CA 90071	U.S.	Co-Chairman and Chief Investment Officer	0	0
Jay Wintrob c/o Oaktree Capital Management, L.P. 333 South Grand Avenue 28th Floor Los Angeles, CA 90071	U.S.	Chief Executive Officer	0	0
John Frank c/o Oaktree Capital Management, L.P. 333 South Grand Avenue 28th Floor Los Angeles, CA 90071	U.S.	Vice Chairman	0	0
Daniel Levin c/o Oaktree Capital Management, L.P. 333 South Grand Avenue 28th Floor Los Angeles, CA 90071	U.S.	Chief Financial Officer	0	0
Todd Molz c/o Oaktree Capital Management, L.P. 333 South Grand Avenue 28th Floor Los Angeles, CA 90071	U.S.	General Counsel, Chief Administrative Officer and Secretary	0	0

Name and Address	Citizenship	Positional Interest	% of Votes	% of Total Assets
Susan Gentile c/o Oaktree Capital Management, L.P. 333 South Grand Avenue 28th Floor Los Angeles, CA 90071	U.S.	Managing Director and Chief Accounting Officer	0	0
Richard Ting c/o Oaktree Capital Management, L.P. 333 South Grand Avenue 28th Floor Los Angeles, CA 90071	U.S.	Managing Director, Associate General Counsel and Assistant Secretary	0	0
Martin Boskovich c/o Oaktree Capital Management, L.P. 333 South Grand Avenue 28th Floor Los Angeles, CA 90071	U.S.	Managing Director	0	0
Jay Ghiya c/o Oaktree Capital Management, L.P. 333 South Grand Avenue 28th Floor Los Angeles, CA 90071	U.S.	Managing Director	0	0
Cary Kleinman c/o Oaktree Capital Management, L.P. 333 South Grand Avenue 28th Floor Los Angeles, CA 90071	U.S.	Managing Director	0	0
Jeffrey Joseph c/o Oaktree Capital Management, L.P. 333 South Grand Avenue 28th Floor Los Angeles, CA 90071	U.S.	Senior Vice President	0	0

Name and Address	Citizenship	Positional Interest	% of Votes	% of Total Assets
Sibil Lin c/o Oaktree Capital Management, L.P. 333 South Grand Avenue 28th Floor Los Angeles, CA 90071	U.S.	Senior Vice President and Treasurer	0	0
Mary Gallegly c/o Oaktree Capital Management, L.P. 333 South Grand Avenue 28th Floor Los Angeles, CA 90071	U.S.	Vice President	0	0
Jamie Toothman c/o Oaktree Capital Management, L.P. 333 South Grand Avenue 28th Floor Los Angeles, CA 90071	U.S.	Vice President	0	0
Philip McDermott c/o Oaktree Capital Management, L.P. 333 South Grand Avenue 28th Floor Los Angeles, CA 90071	U.S.	Vice President	0	0
Ting He c/o Oaktree Capital Management, L.P. 333 South Grand Avenue 28th Floor Los Angeles, CA 90071	U.S.	Vice President	0	0
Jordan Mikes c/o Oaktree Capital Management, L.P. 333 South Grand Avenue 28th Floor Los Angeles, CA 90071	U.S.	Vice President	0	0

Name and Address	Citizenship	Positional Interest	% of Votes	% of Total Assets
Brian Price c/o Oaktree Capital Management, L.P. 333 South Grand Avenue 28th Floor Los Angeles, CA 90071	U.S.	Vice President	0	0
Oaktree AIF Holdings, Inc. c/o Oaktree Capital Management, L.P. 333 South Grand Avenue 28th Floor Los Angeles, CA 90071	Delaware Corporation	General Partner / Limited Partner	100%	40%
Oaktree Capital Group Holdings, L.P. c/o Oaktree Capital Management, L.P. 333 South Grand Avenue 28th Floor Los Angeles, CA 90071	Delaware Limited Partnership	Limited Partner	0	60%

Oaktree AIF Holdings, Inc.

The following are the officers, directors, and attributable stockholder of Oaktree AIF Holdings, Inc.:

Name and Address	Citizenship	Positional Interest	% of Votes	% of Total Assets
Oaktree AIF Holdings, Inc. c/o Oaktree Capital Management, L.P. 333 South Grand Avenue 28th Floor Los Angeles, CA 90071	Delaware Corporation	N / A	N/A	N/A

Name and Address	Citizenship	Positional Interest	% of Votes	% of Total Assets
Howard Marks c/o Oaktree Capital Management, L.P. 333 South Grand Avenue 28th Floor Los Angeles, CA 90071	U.S.	Co-Chairman	0	0
Bruce Karsh c/o Oaktree Capital Management, L.P. 333 South Grand Avenue 28th Floor Los Angeles, CA 90071	U.S.	Co-Chairman and Chief Investment Officer	0	0
Jay Wintrob c/o Oaktree Capital Management, L.P. 333 South Grand Avenue 28th Floor Los Angeles, CA 90071	U.S.	Chief Executive Officer	0	0
John Frank c/o Oaktree Capital Management, L.P. 333 South Grand Avenue 28th Floor Los Angeles, CA 90071	U.S.	Vice Chairman	0	0
Daniel Levin c/o Oaktree Capital Management, L.P. 333 South Grand Avenue 28th Floor Los Angeles, CA 90071	U.S.	Chief Financial Officer	0	0
Todd Molz c/o Oaktree Capital Management, L.P. 333 South Grand Avenue 28th Floor Los Angeles, CA 90071	U.S.	General Counsel, Chief Administrative Officer and Secretary	0	0

Name and Address	Citizenship	Positional Interest	% of Votes	% of Total Assets
Susan Gentile c/o Oaktree Capital Management, L.P. 333 South Grand Avenue 28th Floor Los Angeles, CA 90071	U.S.	Managing Director and Chief Accounting Officer	0	0
Richard Ting c/o Oaktree Capital Management, L.P. 333 South Grand Avenue 28th Floor Los Angeles, CA 90071	U.S.	Managing Director, Associate General Counsel and Assistant Secretary	0	0
Martin Boskovich c/o Oaktree Capital Management, L.P. 333 South Grand Avenue 28th Floor Los Angeles, CA 90071	U.S.	Managing Director	0	0
Jay Ghiya c/o Oaktree Capital Management, L.P. 333 South Grand Avenue 28th Floor Los Angeles, CA 90071	U.S.	Managing Director	0	0
Cary Kleinman c/o Oaktree Capital Management, L.P. 333 South Grand Avenue 28th Floor Los Angeles, CA 90071	U.S.	Managing Director	0	0
Jeffrey Joseph c/o Oaktree Capital Management, L.P. 333 South Grand Avenue 28th Floor Los Angeles, CA 90071	U.S.	Senior Vice President	0	0

Name and Address	Citizenship	Positional Interest	% of Votes	% of Total Assets
Sibil Lin c/o Oaktree Capital Management, L.P. 333 South Grand Avenue 28th Floor Los Angeles, CA 90071	U.S.	Senior Vice President and Treasurer	0	0
Mary Gallegly c/o Oaktree Capital Management, L.P. 333 South Grand Avenue 28th Floor Los Angeles, CA 90071	U.S.	Vice President	0	0
Jamie Toothman c/o Oaktree Capital Management, L.P. 333 South Grand Avenue 28th Floor Los Angeles, CA 90071	U.S.	Vice President	0	0
Philip McDermott c/o Oaktree Capital Management, L.P. 333 South Grand Avenue 28th Floor Los Angeles, CA 90071	U.S.	Vice President	0	0
Ting He c/o Oaktree Capital Management, L.P. 333 South Grand Avenue 28th Floor Los Angeles, CA 90071	U.S.	Vice President	0	0
Jordan Mikes c/o Oaktree Capital Management, L.P. 333 South Grand Avenue 28th Floor Los Angeles, CA 90071	U.S.	Vice President	0	0

Name and Address	Citizenship	Positional Interest	% of Votes	% of Total Assets
Brian Price c/o Oaktree Capital Management, L.P. 333 South Grand Avenue 28th Floor Los Angeles, CA 90071	U.S.	Vice President	0	0
Oaktree Capital Group Holdings, L.P.	Delaware Limited Partnership	Stockholder	100%	0

Oaktree Capital Group Holdings, L.P.

The following are the officers and general partner of Oaktree Capital Group Holdings, L.P.⁶:

Name and Address	Citizenship	Positional Interest	% of Votes	% of Total Assets
Oaktree Capital Group Holdings, L.P. c/o Oaktree Capital Management, L.P. 333 South Grand Avenue 28th Floor Los Angeles, CA 90071	Delaware Limited Partnership	N / A	N/A	N/A
John Frank c/o Oaktree Capital Management, L.P. 333 South Grand Avenue 28th Floor Los Angeles, CA 90071	U.S.	Limited Partner	0	2%

⁶ The Partnership Agreement of Oaktree Capital Group Holdings, L.P. includes the Commission's insulating language for limited partners. Limited partners of Oaktree Capital Group Holdings, L.P. who are not media company professionals as defined in the Partnership Agreement are not listed here.

Name and Address	Citizenship	Positional Interest	% of Votes	% of Total Assets
Bruce Karsh c/o Oaktree Capital Management, L.P. 333 South Grand Avenue 28th Floor Los Angeles, CA 90071	U.S.	Limited Partner	0	19%
Howard Marks c/o Oaktree Capital Management, L.P. 333 South Grand Avenue 28th Floor Los Angeles, CA 90071	U.S.	Limited Partner	0	19%
Oaktree Capital Group Holdings GP, LLC	Delaware Limited Liability Company	General Partner	100%	0

Oaktree Capital Group Holdings GP, LLC

The following are the officers, managers and members of Oaktree Capital Group Holdings GP, LLC⁷:

Name and Address	Citizenship	Positional Interest	% of Votes	% of Total Assets
Oaktree Capital Group Holdings GP, LLC c/o Oaktree Capital Management, L.P. 333 South Grand Avenue 28th Floor Los Angeles, CA 90071	Delaware Limited Liability Company	N/A	N/A	N/A
Howard Marks c/o Oaktree Capital Management, L.P. 333 South Grand Avenue 28th Floor Los Angeles, CA 90071	U.S.	Manager, Member and Co-Chairman	33 1/3%	0
Bruce Karsh c/o Oaktree Capital Management, L.P. 333 South Grand Avenue 28th Floor Los Angeles, CA 90071	U.S.	Manager, Member, Co-Chairman and Chief Investment Officer	33 1/3%	0

⁷ Oaktree Capital Group Holdings GP, LLC (“Oaktree GP LLC”) has a Media Company Committee comprised of John Frank, Bruce Karsh, and Howard Marks. Each member of the Media Company Committee has an equal one-third (1/3) vote. The operating agreement of Oaktree GP LLC includes the Commission’s insulating language with respect to the members of Oaktree GP LLC who do not serve on the Media Company Committee, and these members are considered insulated members for purposes of any media investment. In addition, notwithstanding any other provision of the Operating Agreement, these insulated members may not vote for the removal of any member of the Media Company Committee except as expressly permitted under the Commission’s insulated member requirements. For the purposes of nonmedia-related investments, all members of Oaktree GP LLC are permitted to vote with the percentage of all such members’ voting rights governed by Oaktree GP LLC’s Operating Agreement. Because Oaktree GP LLC does not hold any equity interest in Oaktree Capital Group Holdings, L.P., each member does not hold any indirect equity interest in the Townsquare entities through Oaktree GP LLC.

Name and Address	Citizenship	Positional Interest	% of Votes	% of Total Assets
Jay Wintrob c/o Oaktree Capital Management, L.P. 333 South Grand Avenue 28th Floor Los Angeles, CA 90071	U.S.	Manager and Chief Executive Officer	0	0
John Frank c/o Oaktree Capital Management, L.P. 333 South Grand Avenue 28th Floor Los Angeles, CA 90071	U.S.	Manager, Member and Vice Chairman	33 1/3%	0
Daniel Levin c/o Oaktree Capital Management, L.P. 333 South Grand Avenue 28th Floor Los Angeles, CA 90071	U.S.	Chief Financial Officer	0	0
Todd Molz c/o Oaktree Capital Management, L.P. 333 South Grand Avenue 28th Floor Los Angeles, CA 90071	U.S.	General Counsel, Chief Administrative Officer and Secretary	0	0
Susan Gentile c/o Oaktree Capital Management, L.P. 333 South Grand Avenue 28th Floor Los Angeles, CA 90071	U.S.	Managing Director and Chief Accounting Officer	0	0
Richard Ting c/o Oaktree Capital Management, L.P. 333 South Grand Avenue 28th Floor Los Angeles, CA 90071	U.S.	Managing Director, Associate General Counsel and Assistant Secretary	0	0

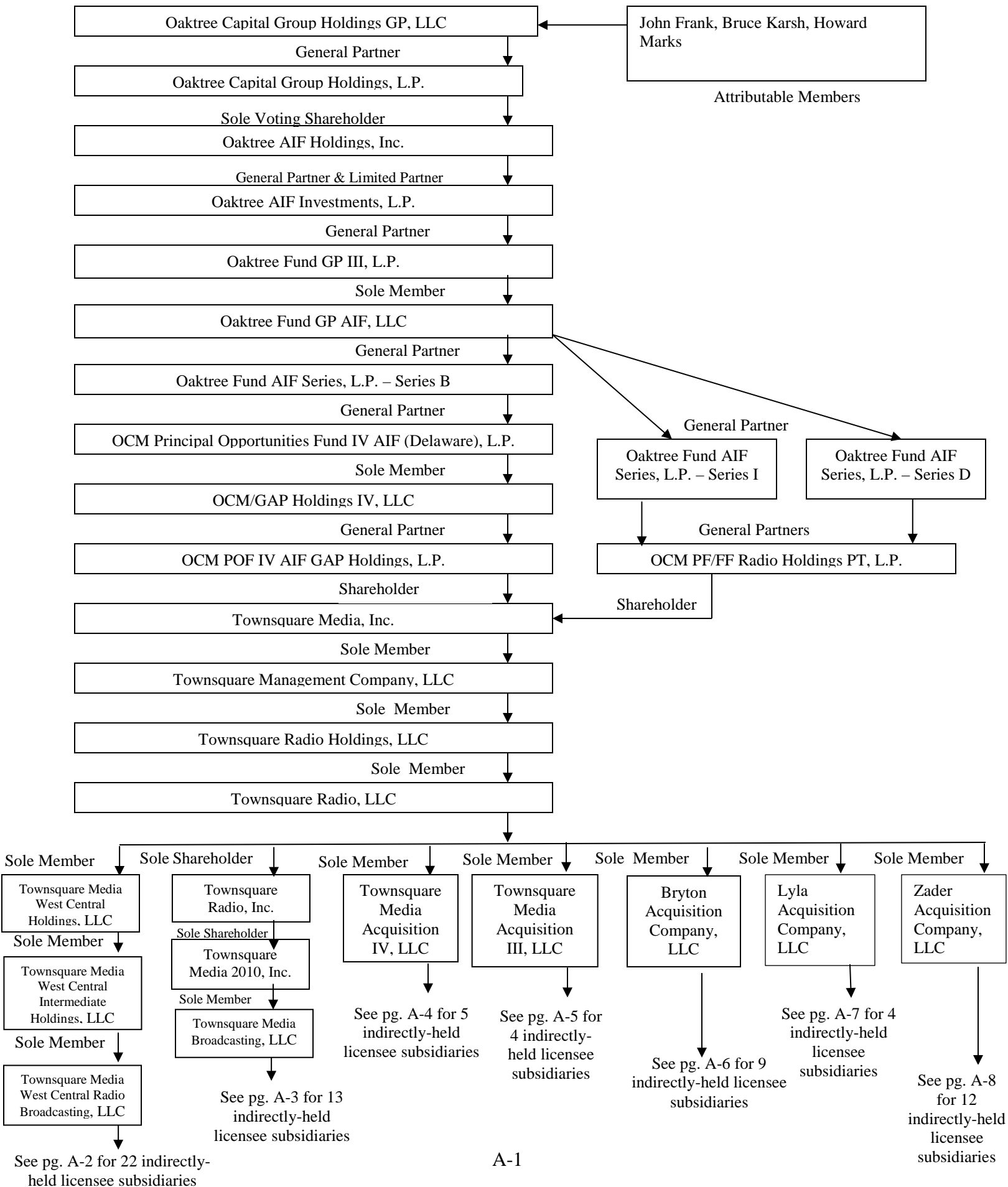
Name and Address	Citizenship	Positional Interest	% of Votes	% of Total Assets
Rodney Vencatachellum c/o Oaktree Capital Management, L.P. 333 South Grand Avenue 28th Floor Los Angeles, CA 90071	U.S.	Managing Director and Chief Compliance Officer	0	0
Martin Boskovich c/o Oaktree Capital Management, L.P. 333 South Grand Avenue 28th Floor Los Angeles, CA 90071	U.S.	Managing Director	0	0
Jay Ghiya c/o Oaktree Capital Management, L.P. 333 South Grand Avenue 28th Floor Los Angeles, CA 90071	U.S.	Managing Director	0	0
Kristin Scott c/o Oaktree Capital Management, L.P. 333 South Grand Avenue 28th Floor Los Angeles, CA 90071	U.S.	Managing Director	0	0
Jeffrey Joseph c/o Oaktree Capital Management, L.P. 333 South Grand Avenue 28th Floor Los Angeles, CA 90071	U.S.	Senior Vice President	0	0
Mary Gallegly c/o Oaktree Capital Management, L.P. 333 South Grand Avenue 28th Floor Los Angeles, CA 90071	U.S.	Vice President	0	0

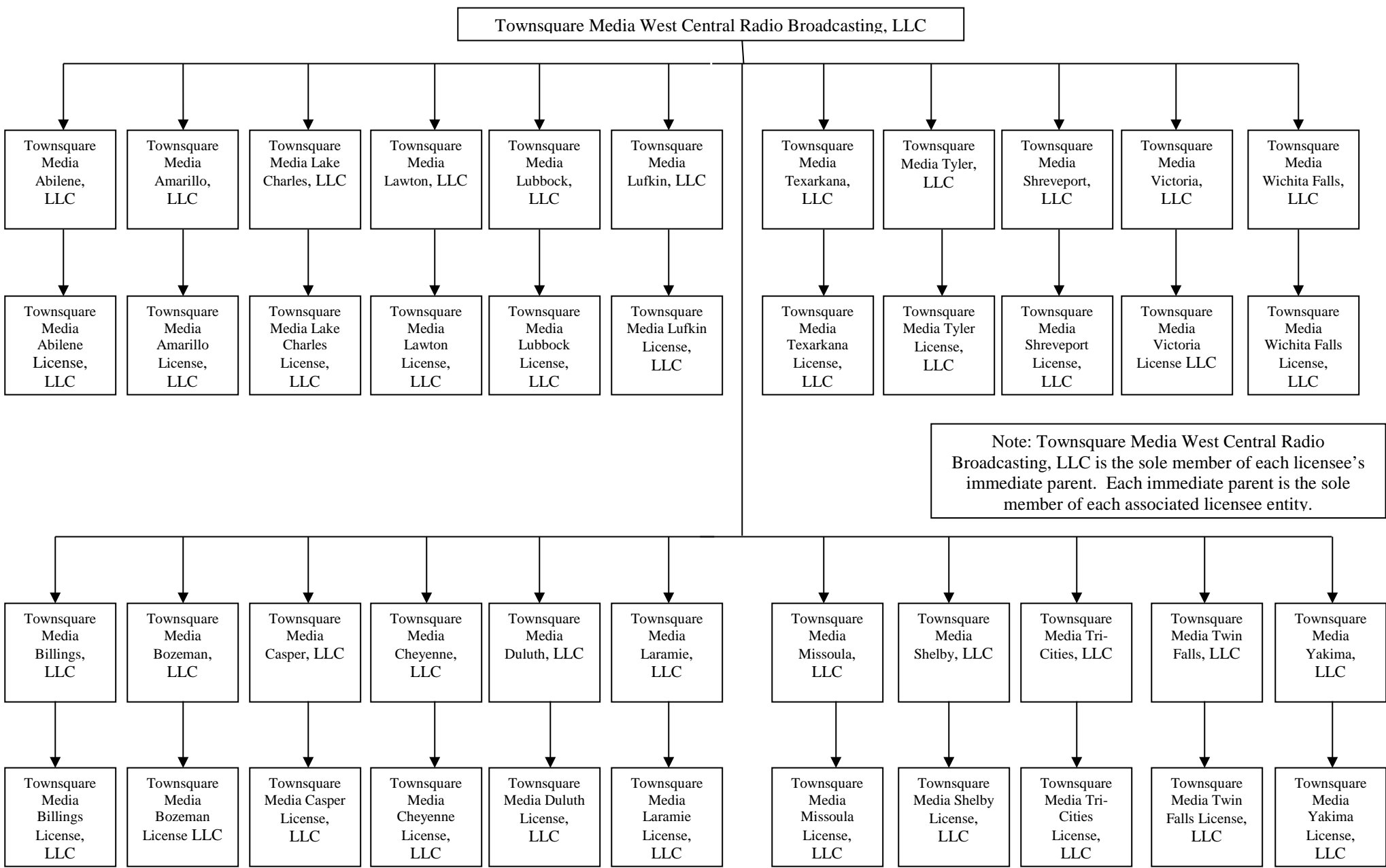
Name and Address	Citizenship	Positional Interest	% of Votes	% of Total Assets
Jamie Toothman c/o Oaktree Capital Management, L.P. 333 South Grand Avenue 28th Floor Los Angeles, CA 90071	U.S.	Vice President	0	0
Philip McDermott c/o Oaktree Capital Management, L.P. 333 South Grand Avenue 28th Floor Los Angeles, CA 90071	U.S.	Vice President	0	0
Ting He c/o Oaktree Capital Management, L.P. 333 South Grand Avenue 28th Floor Los Angeles, CA 90071	U.S.	Vice President	0	0
Jordan Mikes c/o Oaktree Capital Management, L.P. 333 South Grand Avenue 28th Floor Los Angeles, CA 90071	U.S.	Vice President	0	0
Brian Price c/o Oaktree Capital Management, L.P. 333 South Grand Avenue 28th Floor Los Angeles, CA 90071	U.S.	Vice President	0	0

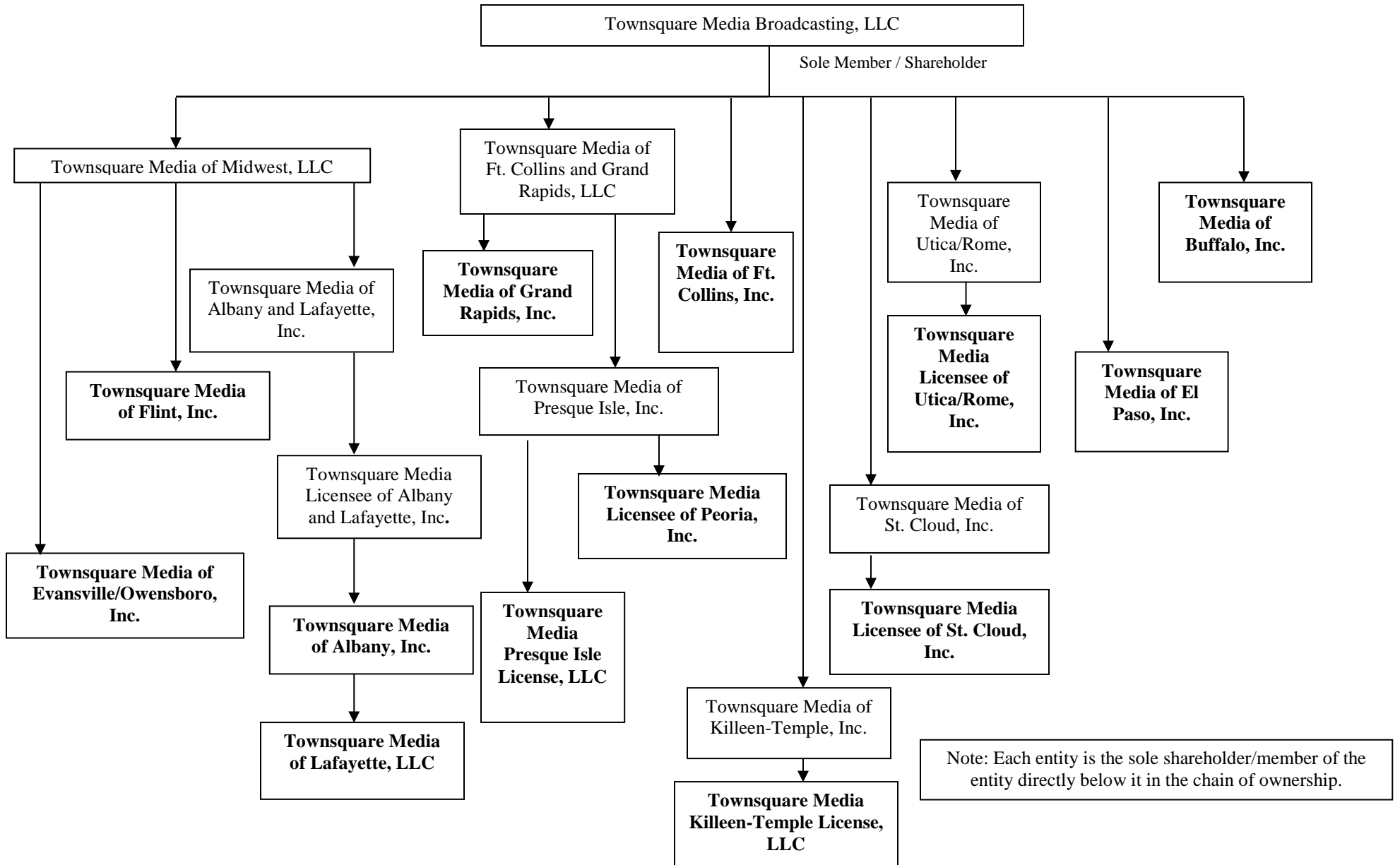
Diagram A

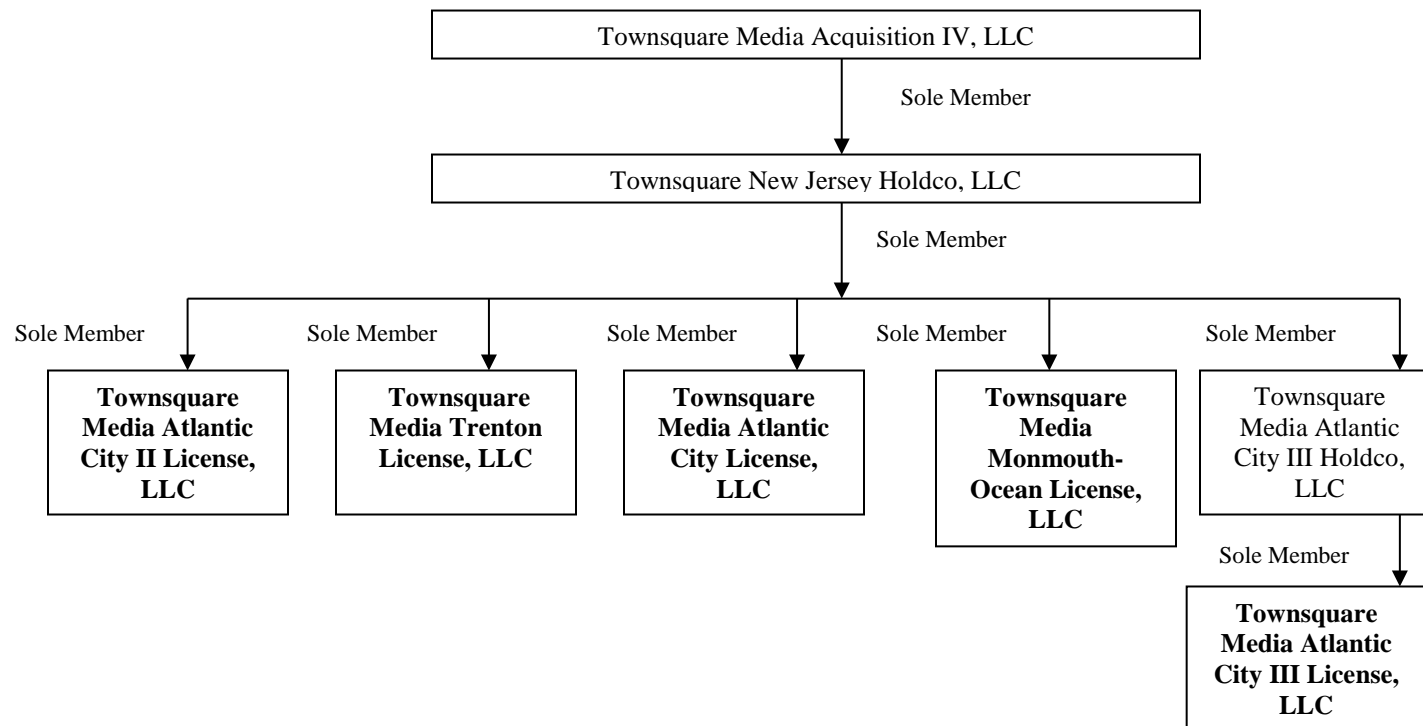
Ownership and Control Structure Chart

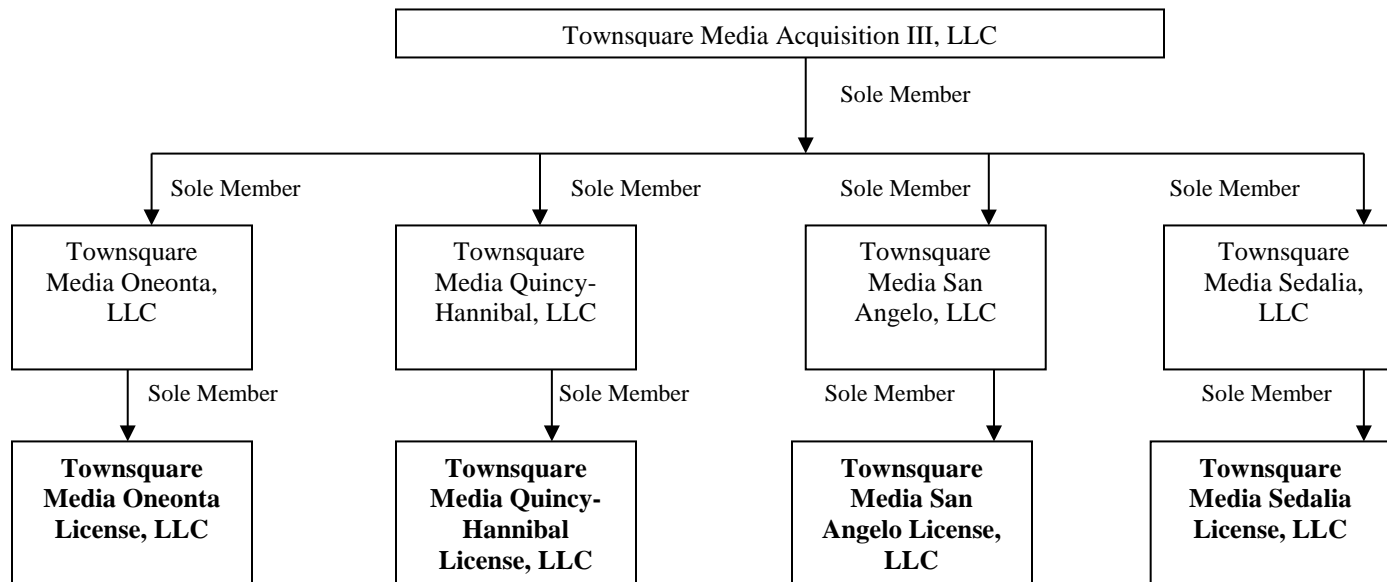
TOWNSQUARE OWNERSHIP STRUCTURE

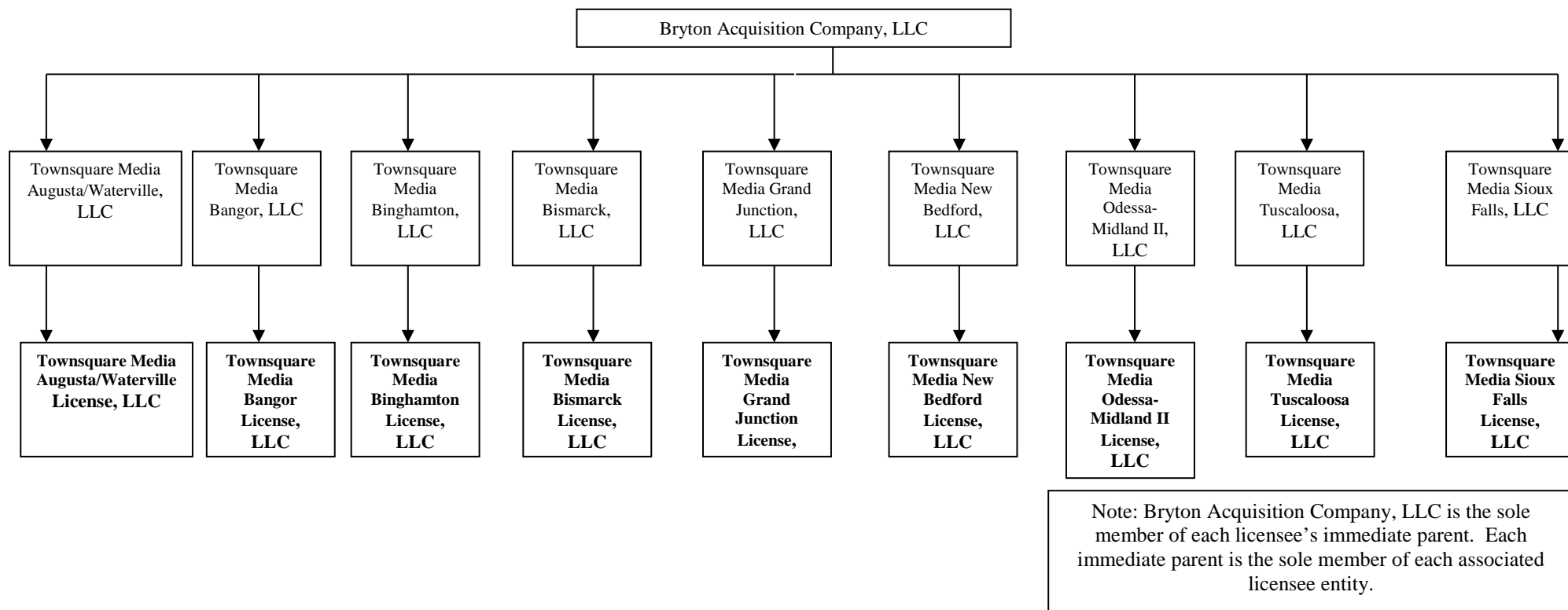


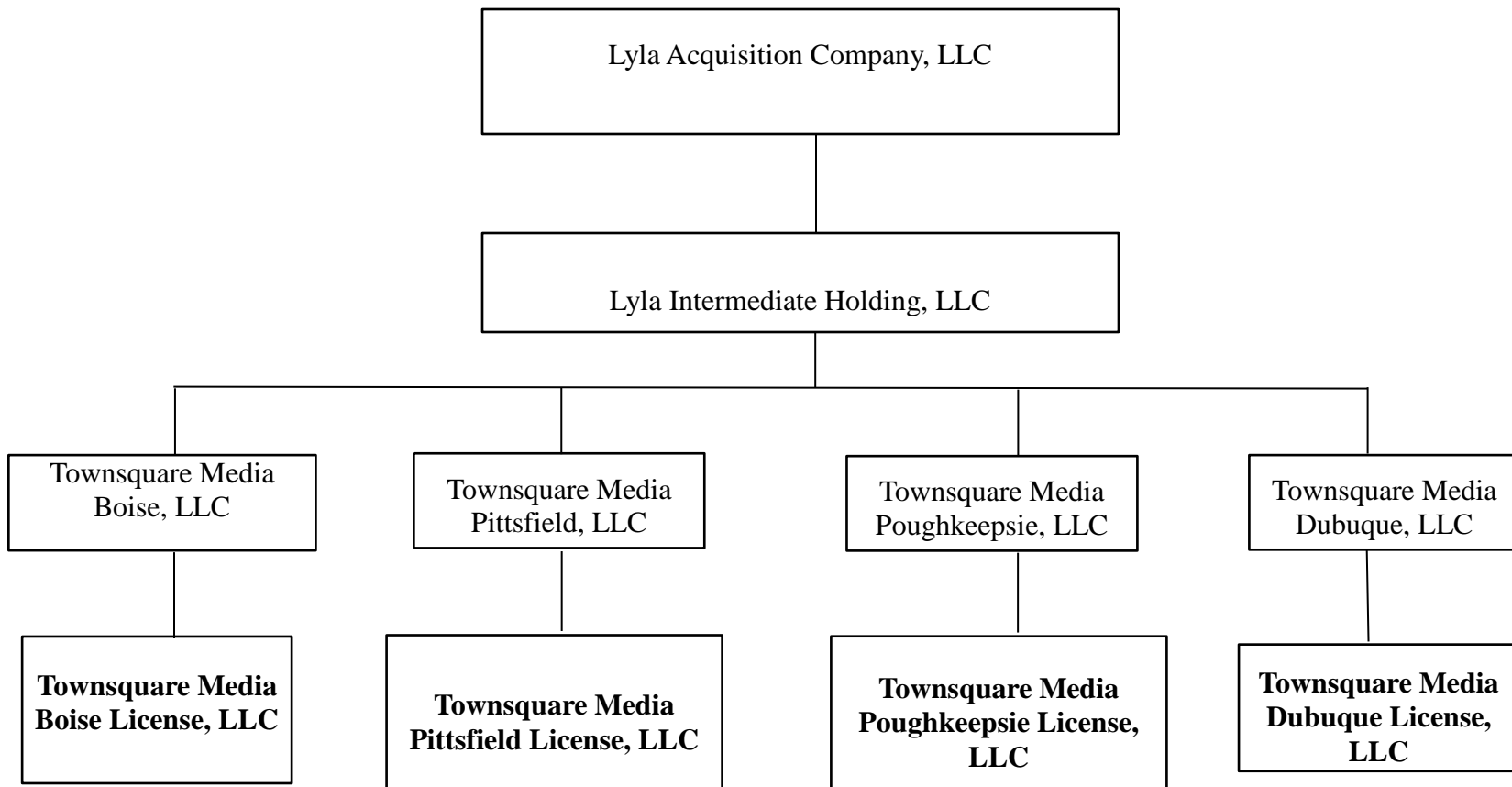












Note: Lyla Acquisition Company, LLC is the sole member of each licensee's immediate parent. Each immediate parent is the sole member of each associated licensee entity.

