

Exhibit 11.1 Copy of USGS Topographic Map

Proposed Site

39° 04' 24" NL

95° 40' 19" WL

NAD 1927

(39-04-24.35NL; 95-40-19.50WL NAD1983)



Exhibit 11.2

Vertical Plan of Antenna System

The site is located on the roof of the
Family of God Church, 1231 NW Eugene Street;
the city of Topeka, Shawnee County, Kansas.

Site Location (NAD 27)

NL: 39° 04' 24"

WL: 95° 40' 19"

(39-04-24.35L; 95-40-19.50WL NAD1983)

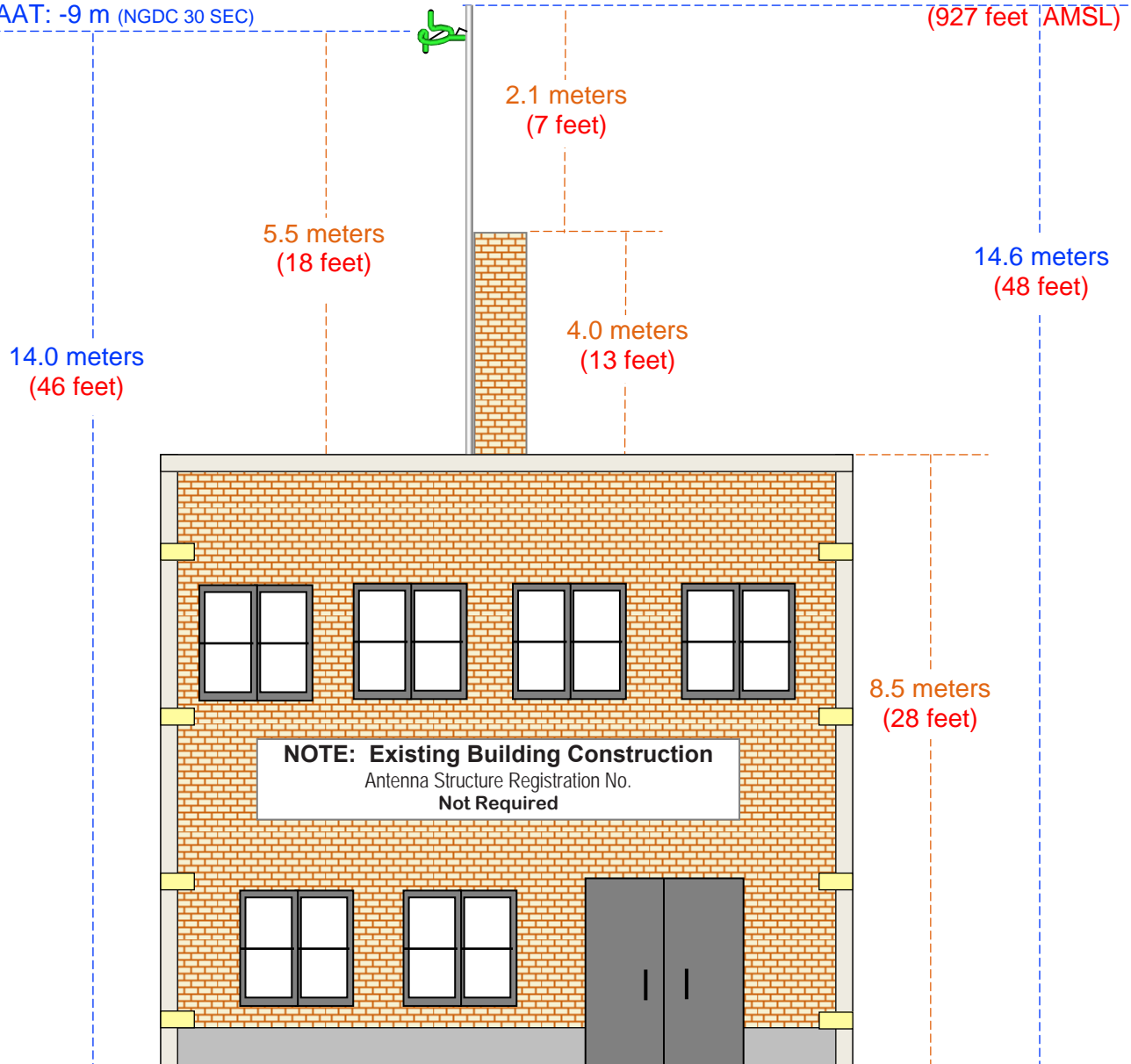
Proposed Antenna

COR: 281.9 meters AMSL

avg HAAT: -9 m (NGDC 30 SEC)

282.5 meters AMSL

(927 feet AMSL)



Ground Elevation = 267.9 m AMSL

(879 feet AMSL)

Drawing is not to Scale

MUNN-REESE, INC.

Broadcast Engineering Consultants
Coldwater, MI 49036

Terrain
248 374 m

NGDC 30 SEC Terrain Database
U.S. Census 2010 PL Database

Exhibit 11.3 Proposed LPFM Service Contour Study

Proposed 60 dBμ F(50:50) Contour

CH249DL1
+

Topeka

Shawnee



Scale 1:100,000

0 2 4 6 km

CH249DL1
Topeka, KS
Proposed Operation
Facility ID: Pending
Latitude: 39-04-24 N
Longitude: 095-40-19 W
ERP: 0.10 kW
Channel: 249L1
Frequency: 97.7 MHz
AMSL Height: 282.0 m
Horiz. Pattern: Omni

60 dBμ F(50:50) Contour
Total Population: 57,412
Total Area: 100 sq. km

Exhibit 11.4

Tabulation of Proposed Allocation

REFERENCE			DISPLAY DATES
39 04 24.0 N.	CLASS = L1		DATA 09-30-13
95 40 19.0 W.	Current Spacings to 2nd Adj.		SEARCH 10-15-13
----- Channel 249 - 97.7 MHz -----			

Call	Channel	Location		Azi	Dist	FCC	Margin
Lat.	Lng.	Ant	Power		HAAT		
KJCK-FM	LIC 248C1	Junction City	KS	266.8	103.92	99.5	4.4
39 00 53.0	96 52 12.0	C	100.000 kW		192 M		
Eagle Communications, Inc. BMLH20070607ACD							
KJCK-FM	RSV-A 248C1	Junction City	KS	266.8	103.99	99.5	4.5
39 00 53.0	96 52 15.0		0.000 kW		299 M		
Eagle Communications, Inc. RM10017							
NULL Counterproposal From channel 233C, Junction City, KS pursuant to R&O, MM Docket No. 00-129, released 30 November 2001, effective 14 January 2002. Reserved for KJCK-FM, Facility ID: 52799							
KSNP	LIC-N 249C2	Burlington	KS	173.4	101.40	90.5	10.9
38 09 57.0	95 32 19.0	NCX	17.200 kW		178 M		
My Town Media Inc BLH20070308AAW							
KMBZ-FM	LIC 251C0	Kansas City	KS	92.9	100.43	83.5	16.9
39 01 20.0	94 30 49.0	C	100.000 kW		335 M		
Entercom Kansas City Licen BLH20030423AAV							
KLRX	RSV-A 247C1	Lee's Summit	MO	89.7	93.12	72.5	20.6
39 04 20.0	94 35 45.0		0.000 kW		299 M		
Educational Media Foundati RM10017							
NULL Counterproposal Reserved for KCSX(FM). From Channel 247C3, Moberly, MO pursuant to R&O, MM Docket No. 00-129, released 30 November 2001, effective 14 January 2002.							
KLRX	LIC-N 247C1	Lee's Summit	MO	88.6	103.87	72.5	31.4
39 05 26.0	94 28 18.0	NC	55.000 kW		357 M		
Educational Media Foundati BMLH20080102ABC							
K249DT	LIC 249D	Atchison	KS	33.2	65.18	31.5	33.7
39 33 47.0	95 15 18.0	V	0.170 kW		88 M		
Educational Media Foundati BLFT20070409AAC							
K249DT	CP 249D	Atchison	KS	39.3	73.25	31.5	41.8
39 34 56.0	95 07 52.0	C	0.170 kW	0 M			
Educational Media Foundati BPFT20130419ABC							
K250AY	LIC 250D	Manhattan	KS	283.2	81.42	20.5	60.9
39 14 12.0	96 35 25.0	C	0.100 kW		66 M		
University Of Kansas BLFT20110407ACM							
KBBX-FM	LIC 249C1	Nebraska City	NE	348.7	205.94	110.5	95.4
40 53 27.0	96 09 11.0	CX	100.000 kW		298 M		
Connoisseur Media Licenses BMLH20130124AGT							
KPOW-FM	LIC 249C1	La Monte	MO	89.9	208.16	110.5	97.7
39 03 10.0	93 16 01.0	CX	100.000 kW		299 M		
Benne Broadcasting Of Seda BLH20021101ABG							
K247BN	CP 247D	Madison	KS	201.9	112.01	13.5	98.5
38 08 12.0	96 09 01.0	C	0.170 kW	0 M			
Community Broadcasting, In BNPFT20130312ACJ							

Reference station has protected zone issue:
 RSV-R = reserved - needs protection, RSV-A = allocation
 All separation margins include rounding